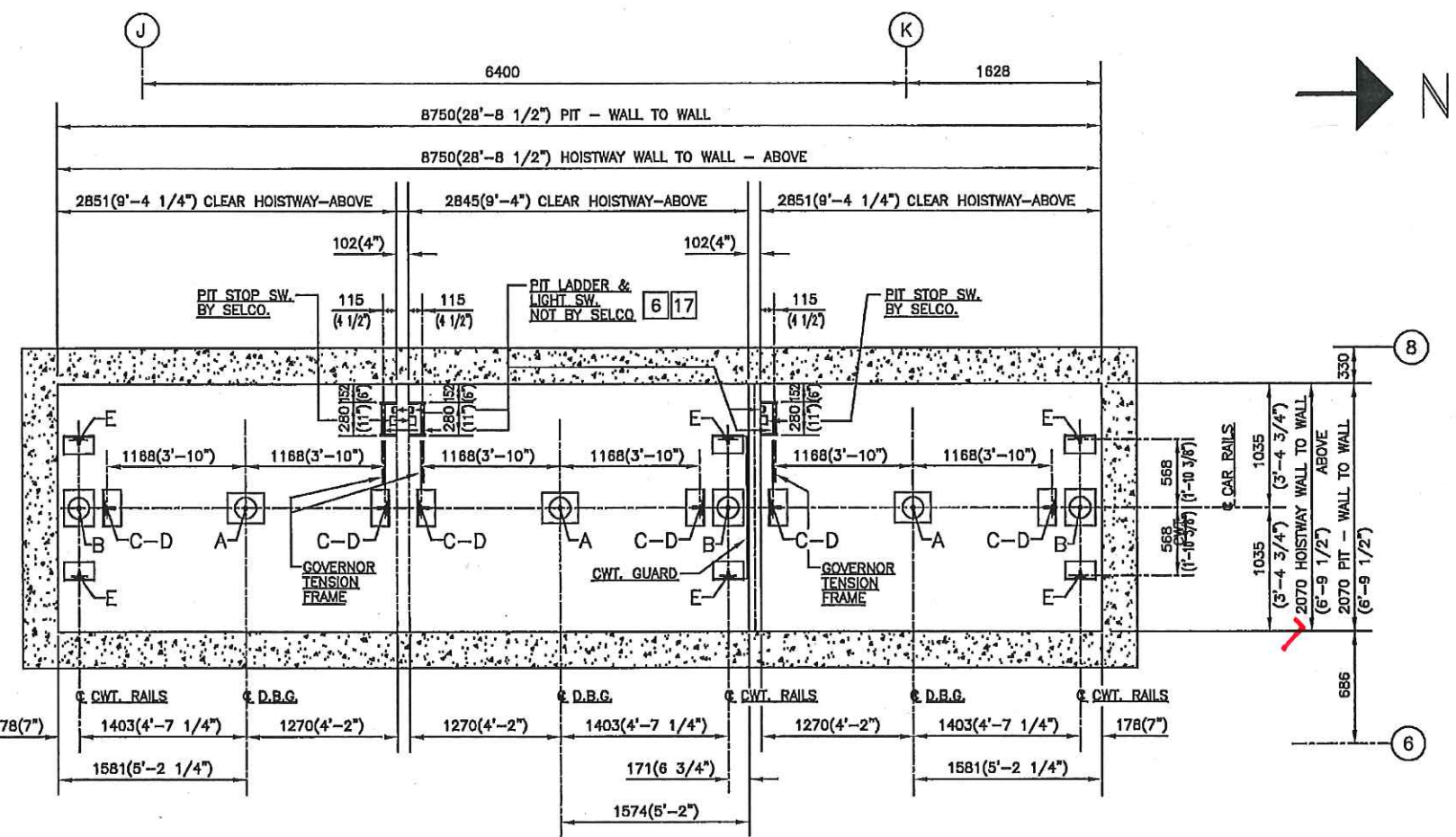


**Teepie Architects INC.**

Reviewed (✓)  
 Reviewed as noted (✓)  
 Revise and resubmit ( )  
 Not Reviewed ( )  
 Date: 2015.05.25  
 Reviewed by: [Signature]

This review by Teepie Architects Inc. is for the sole purpose of ascertaining conformance with the general design concept. This review shall not mean that Teepie Architects Inc. approves the detailed design inherent in the shop drawings, responsibility for which shall remain with the Contractor submitting same, and such review shall not relieve the Contractor of the responsibility for errors or omissions in the shop drawings or of the responsibility for meeting all requirements of the Contract Documents. The Contractor is responsible for all details to be confirmed and completed at the job site for information that pertains solely to construction procedures or techniques of construction and installation, and for coordination with all other trades.



ELEV. No. 1      ELEV. No. 2      ELEV. No. 3  
**FIRE FIGHTER'S & MOVING ELEVATOR**

PIT LOADS		
LOAD SYMBOL	LOAD CONDITION	LOADS
A	IMPACT ON CAR BUFFER SUPPORT	169.0 kN (38000 lbs.)
B	IMPACT ON CWT. BUFFER SUPPORT	140.0 kN (31500 lbs.)
C	VERTICAL IMPACT LOAD ON CAR RAIL AT SAFETY APPLIC.	80.0 kN (18000 lbs.)
D	WEIGHT OF ONE STACK OF CAR RAILS	1090 kg. (2400 lbs.)
E	WEIGHT OF ONE STACK OF CWT. RAILS	775 kg. (1700 lbs.)

NOTE: FOR DESIGN OF PIT SLAB, LOADS 'C' & 'D' MUST BE COMBINED.

SQ ALEXANDRIA PARK  
 BLOCK 11  
 TORONTO, ONTARIO  
 ELEVATORS No. 1 to 3  
 PIT PLAN

IMPORTANT - THE FOLLOWING NOTES SHOULD BE CONSIDERED BY THE OWNER OR HIS AGENT BEFORE APPROVING THESE DRAWINGS.  
 PROVISIONS BY: OWNER

- CONSTRUCTION, FIRE RATING AND VENTING OF HOISTWAY AND MACHINE ROOM ACCORDING TO ELEVATOR AND BUILDING CODES.
- HOISTWAY PLUMBED TO WITHIN 25mm. ALL LEDES OVER 100mm BEVELLED 75 TO HORIZONTAL.
- ACCESS ROUTE TO MACHINE ROOM 900mm x 2100mm MINIMAL SLOPE INCLINED TO 5% MAXIMAL CATCH OR PARAPET ON OPEN ROOF.
- MACHINE ROOM MAINTAINED AT 5'-32" C. HEAT GENERATED 100435 W. (34350 B.T.U./HR.)
- REGULAR AND EMERGENCY POWER SUPPLY AND WIRING ACCORDING TO INFORMATION TO FOLLOW.
- 110V LIGHT FIXTURE(S), SWITCH AND OUTLET IN EACH PIT AND MACHINE ROOM SWITCH ON LOCK JAMB SIDE OF DOOR.
- ELEVATOR FEEDERS INCLUDING LOCKABLE FUSED DISCONNECT SWITCHES OR CIRCUIT BREAKERS.
- FEED LINE TO DISPATCHER DISCONNECT SWITCH MUST RUN FROM SPLITTER BOX.
- SUPPORT FOR MACHINE BEAMS, SHEAVE BEAMS AND BUFFERS STRUCTURALLY DESIGNED FOR REACTIONS SHOWN.
- GRROUTING OF MACHINE BEAMS OR POURING OF FLOOR ABOVE HOISTWAY TO BE DONE AFTER MACHINE IS IN PLACE.
- HOIST BEAMS IN MACHINE ROOM FOR A LINE LOAD OF .23.0 kN, LOCATED AS SHOWN.
- RAIL BRACKET SUPPORTS DESIGNED FOR RAIL REACTIONS SHOWN AT EVERY FLOOR AND ROOF LEVELS. EXTRA SUPPORTS REQUIRED WHEN FLOOR HEIGHT EXCEEDS MAXIMUM RAIL BRACKET SPACING.
- SECURELY ANCHORED SELCO BEAMS AT EVERY FLOOR AND ROOF LEVELS. EXTRA BEAMS REQUIRED WHEN FLOOR HEIGHT EXCEEDS MAXIMUM RAIL BRACKET SPACING.
- POCKETS, PATCHING, BARBICADES AND PIT WATERPROOFING OR SUMP WERE REQUIRED.
- FRONT WALLS (ROUGH OPENINGS) TO BE ERECTED AFTER ENTRANCE FRAMES HAVE BEEN INSTALLED. ENTRANCE FRAMES ARE NOT DESIGNED TO SUPPORT OVERHEAD WALL LOADS. SHALLS TO BE GROUNDED FULL LENGTH.
- SHALL RECESS AT REAR SERVING FLOOR(S) AS SHOWN.
- ELEVATOR PIT LADDER(S) EXTENDING 1220mm ABOVE THE BOTTOM LANDING AND LOCATED AS SHOWN.

**BUFFER REACTIONS - SEE CHART THIS SHEET**

CAR No.	CAR	CWT.

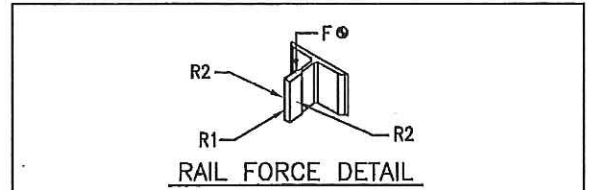
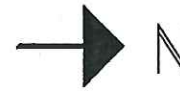
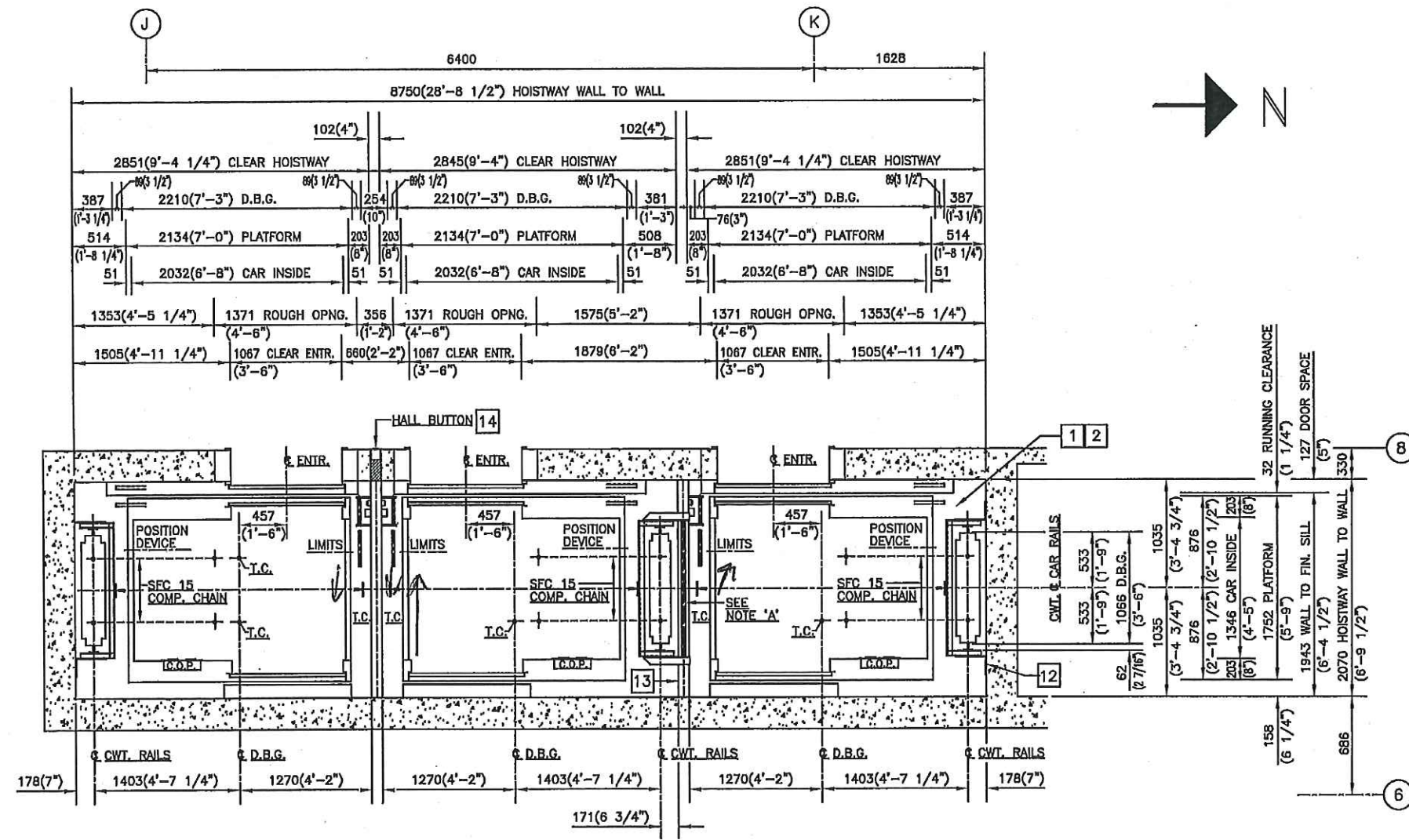
**ELEVATOR(S) DATA**

GENERAL DATA	PASSENGER
CLASSIFICATION	PASSENGER
CAPACITY	1134 kg. (2500 lbs.)
SPEED	1.78 m/s (350 f.p.m.)
ROPING	1 : 1
OPERATION	GROUP AUTOMATIC
CONTROL	V V V F
LANDINGS/OPENINGS	#1-16/17(14-FRONT, 3-REAR) / #2-3-16/18(14-FRONT, 2-REAR)
EMERGENCY POWER	YES
FIREFIGHTERS' ELEV. (CAR No.)	3
CAR SAFETY (TYPE)	MODEL 480 TYPE 'B'-F.G.C.
CWT. SAFETY (TYPE)	N/A
CAR ENCLOSURE (TYPE)	SPECIAL
CWT. FILLERS (QTY./WT.)	
CWT. FILLERS (DWG.No.)	
CAR GUIDES (TYPE)	ROLLER GUIDES - DELCO 152(6") DIA.
CWT. GUIDES (TYPE)	ROLLER GUIDES - DELCO 76(3") DIA.
CAR TOE GUARD (LGTH.)	1220mm (48")
PLATFORM (TYPE)	STEEL FRAME
FRAME-FRONT/BACK (SIZE)	FORMED CHANNEL
FRAME-SIDES (SIZE)	FORMED CHANNEL
JOISTS (SIZE)	FORMED CHANNEL
FLOOR (TYPE)	1 LAYER - 3/4" PLYWOOD + FIN. FLOORING
AREA (m sq.)	29.45 sq.ft. (2.73m <sup>2</sup> )
HOIST ROPES (QTY./DIA./LGTH.)	5 X 5/8" X 210'-0"
GOV. ROPES (QTY./DIA./LGTH.)	1 X 3/8" X 365'-0"
ROPE FASTENING (TYPE)	WEDGE SHACKLES
COMPENSATION (QTY./DIA./LGTH.)	(2)-SFC15 - 190'-0"
GOVERNOR (TYPE/STROKE)	MODEL 206 / 2.18m/s (425f.p.m.)
BUFFERS (TYPE/STROKE)	MODEL 500 / 228mm (9")
CAR RAILS	16.4 kg./m (11 lbs./ft.)
CWT. RAILS	12 kg./m (8.0 lbs./ft.)
MAX. BRACKET SPACING-CAR	3658(12'-0")
MAX. BRACKET SPACING-CWT.	3700(12'-2")
MACHINE (TYPE)	TGD1-2535-HV
DRIVE SHEAVE (DIA.)	650 mm (25.59")
DEFLECTOR SHEAVE (DIA.)	640 mm (25.2")
MOTOR	16.4 kW (22 H.P.)
ROPE-GRIPPER	N/A
TRANSFORMER	
CAR	2552kg. (5625lbs.)
COUNTERWEIGHT (45% OVERWEIGHT)	3100kg. (6835lbs.)
LOAD ON SAFETY	3995kg. (8805lbs.)
SHEAVE SHAFT LOAD	7350kg. (16200lbs.)
MACHINE	1588kg. (3500lbs.)
TIDLER SHEAVE	148kg. (325lbs.)
HOIST ROPES	279kg. (615lbs.)
COMPENSATION	259kg. (570lbs.)
TRAVELLING CABLES	78kg. (170lbs.)
CONTROLLER	275kg. (600lbs.)
TRANSFORMER	230kg. (500lbs.)

DRWN.	W.T.	OWNER
10/06/14	ARCH. ENG.	TEEPLE ARCHITECTS
	CONTRACTOR	
CHKD.	INSTALL. BY	SELCO ELEVATORS LTD.

No.	REVISION	BY	DATE
'B'	PIT LADDER SIZE & LOCATION REVISED. GOVERNOR TENSION FRAMES RELOCATED. MACHINE TYPE, DRIVE SHEAVE DIA. AND MOTOR H.P. ALL REVISED IN ELEVATOR DATA.		W.T. 03/06/15
'A'	DIMENSIONS TO COLUMNS LINES REVISED. LAYOUT APPROVED AND MADE FINAL.		W.T. 12/27/14

BLDG. NAME | SQ ALEXANDRIA PARK - BLOCK 11  
 ADDRESS | TORONTO, ONT.  
 THREE (3) GEARLED PASSENGER ELEVATORS  
**SELCO ELEVATORS LTD.**  
 DRWG. No. | SQ ALEX PARK      REV. B      SHEET 1 of 8



	CAR	APPLICATION	CWT.	APPLICATION
R1	2.10kN (460lbs.)	SAFETY	1.40kN (310lbs.)	RUNNING
R2	0.30kN ( 65lbs.)	LOADING	0.16kN ( 35lbs.)	RUNNING
F	80.0kN(18000lbs.)	FORCE	---	FORCE

THIS FORCE INCLUDES DOUBLING FOR IMPACT.

**NOTE 'A':**  
 DIVIDING BEAMS BY OTHER CONTR. TO BE PROVIDED AT ALL FLOOR LEVELS 'P2', 'P1', 1st to 14th. Roof, 610mm BELOW EACH ROOM FLOOR SLAB AND BETWEEN FLOORS 'P1' & 'P2'.

ELEV. No. 1

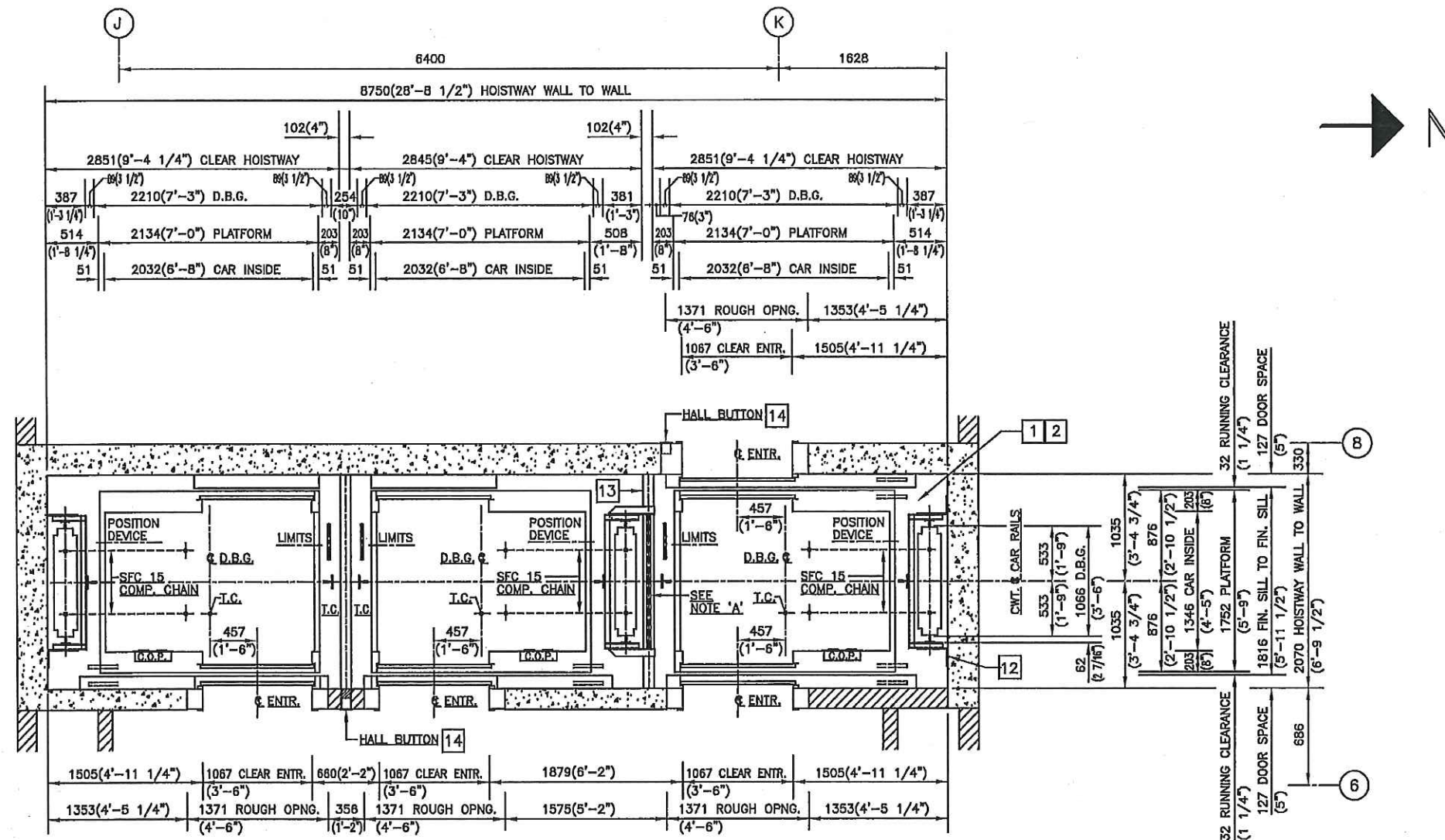
ELEV. No. 2

ELEV. No. 3  
 FIRE FIGHTER'S &  
 MOVING ELEVATOR

**HOISTWAY PLAN**  
**'P1' & 'P2' FLOORS**

SQ ALEXANDRIA PARK  
 BLOCK 11  
 TORONTO, ONTARIO  
 ELEVATORS No. 1 to 3  
 HOISTWAY PLAN at  
 'P1' & 'P2' FLOORS

'B' GOVERNOR IDLER SHEAVE, LIMITS & T.C. RELOCATED.		W.T.	03/06/15
'A' DIMENSIONS TO COLUMNS LINES REVISED. LAYOUT APPROVED AND MADE FINAL.		W.T.	12/27/14
No.	REVISION	BY	DATE
BLDG. NAME	SQ ALEX PARK		
ADDRESS	TORONTO, ONT.		
THREE (3) GEARED PASSENGER ELEVATORS			
<b>SELCO ELEVATORS LTD.</b>			
DRWG. No.	SQ ALEX PARK	REV. 'B'	SHEET 2 of 8



ELEV. No. 1

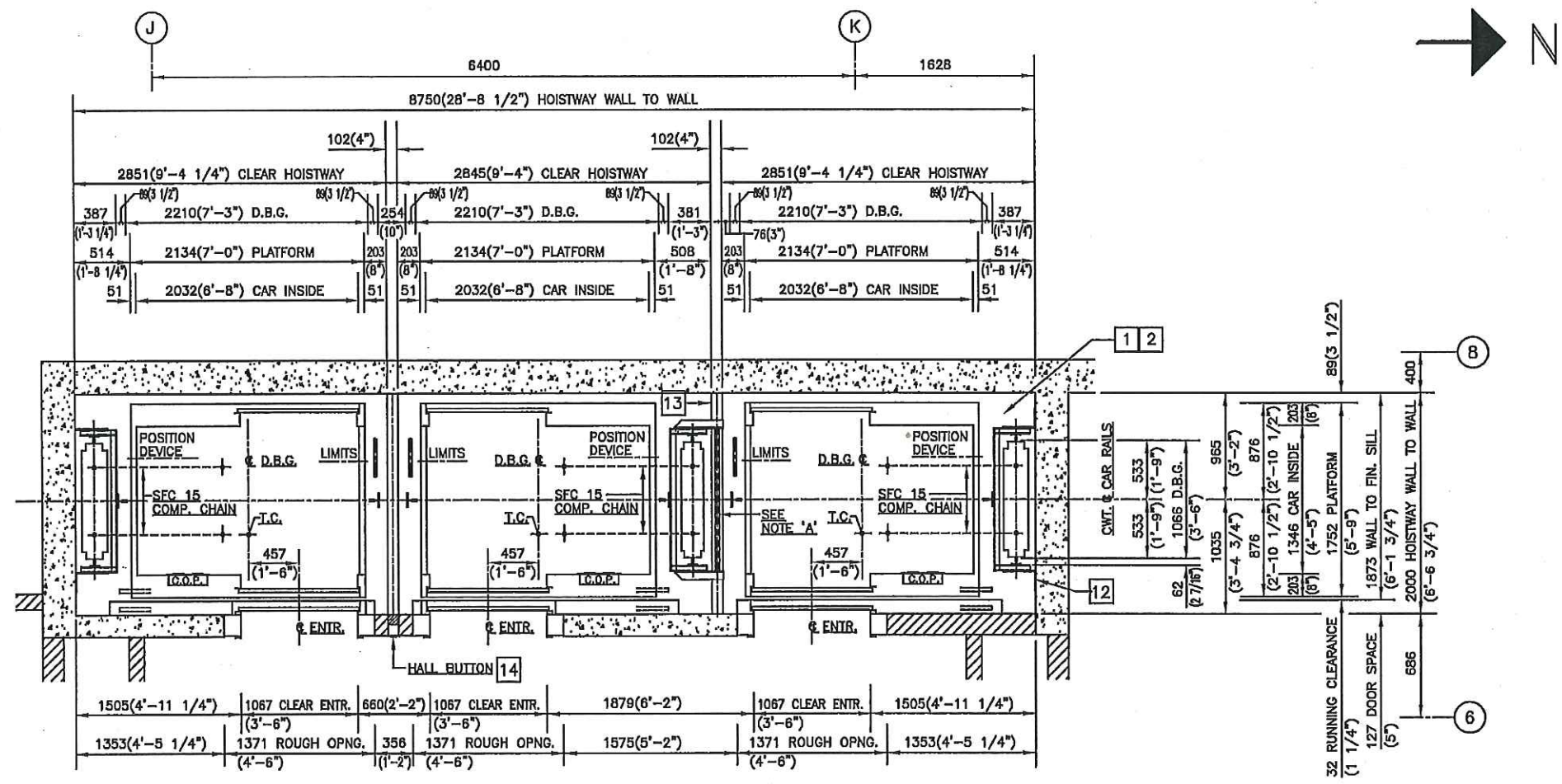
ELEV. No. 2

ELEV. No. 3  
FIRE FIGHTER'S &  
MOVING ELEVATOR

HOISTWAY PLAN  
'1st' FLOOR

SQ ALEXANDRIA PARK  
BLOCK 11  
TORONTO, ONTARIO  
ELEVATORS No. 1 to 3  
HOISTWAY PLAN at  
'1st' FLOOR

*B* GOVERNOR IDLER SHEAVE, LIMITS & T.C. RELOCATED.		W.T. 03/08/15
*A* DIMENSIONS TO COLUMNS LINES REVISED. LAYOUT APPROVED AND MADE FINAL.		W.T. 12/27/14
No.	REVISION	BY DATE
BLDG. NAME	SQ ALEX PARK	
ADDRESS	TORONTO, ONT.	
THREE (3) GEARED PASSENGER ELEVATORS		
SELCO ELEVATORS LTD.		
DRWG. No.	SQ ALEX PARK	REV. B SHEET 3 of 8



ELEV. No. 1

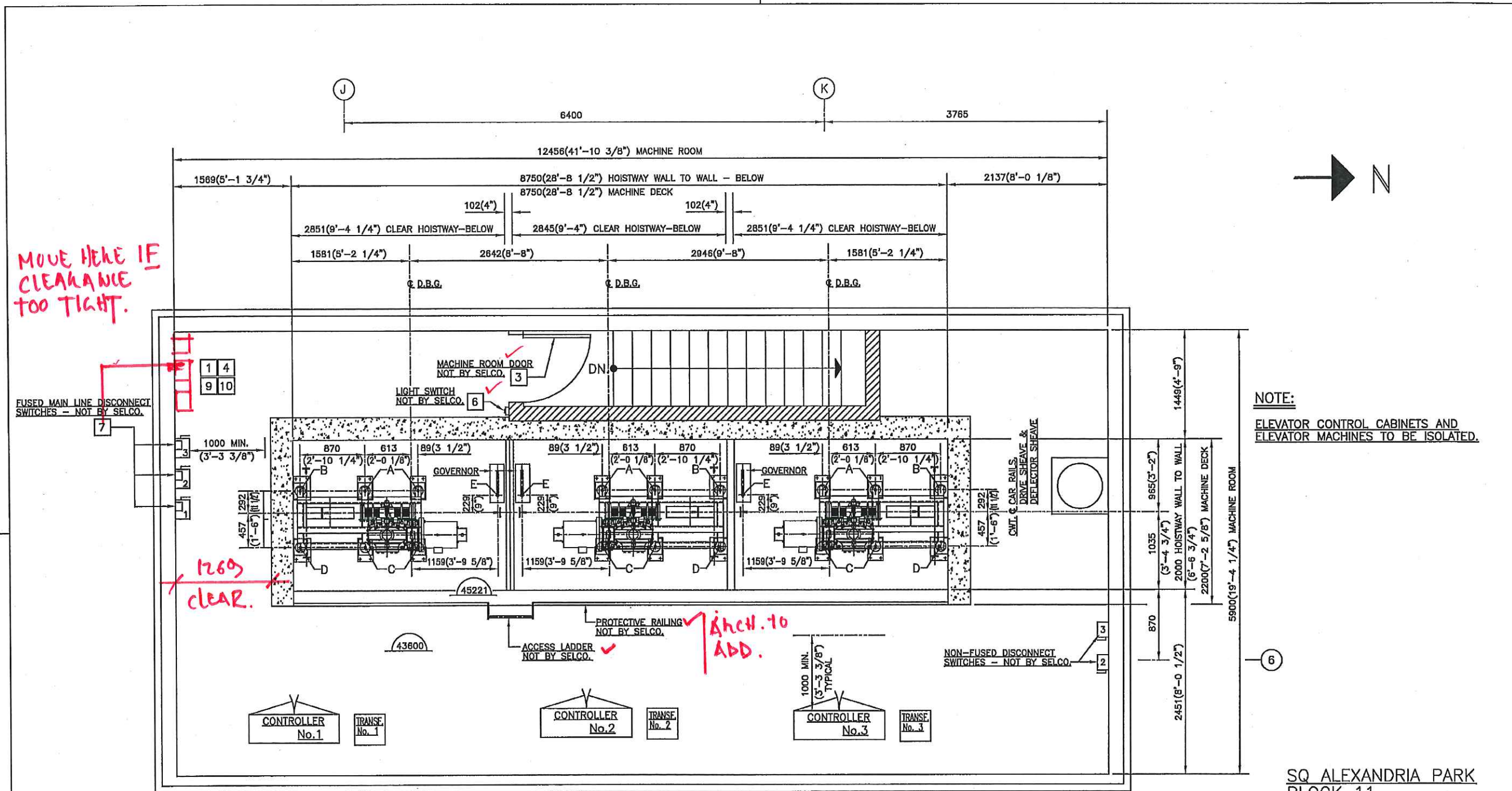
ELEV. No. 2

ELEV. No. 3  
FIRE FIGHTER'S &  
MOVING ELEVATOR

HOISTWAY PLAN  
'2nd' to '14th' FLOORS

SQ ALEXANDRIA PARK  
BLOCK 11  
TORONTO, ONTARIO  
ELEVATORS No. 1 to 3  
HOISTWAY PLAN at  
'2nd' to '14th' FLOORS

"B" GOVERNOR IDLER SHEAVE, LIMITS & T.C. RELOCATED.		W.T.	03/08/15
DIMENSION CENTRELINE CAR RAILS TO REAR WALL REVISED.		W.T.	12/27/14
"A" DIMENSIONS TO COLUMN LINES REVISED. LAYOUT APPROVED AND MADE FINAL.		W.T.	12/27/14
No.	REVISION	BY	DATE
BLDG. NAME	SQ ALEX PARK		
ADDRESS	TORONTO, ONT.		
THREE (3) GEARED PASSENGER ELEVATORS			
SELCO ELEVATORS LTD.			
DRWG. No.	SQ ALEX PARK	REV. 'B'	SHEET 4 of 8



**NOTE:**  
ELEVATOR CONTROL CABINETS AND  
ELEVATOR MACHINES TO BE ISOLATED.

ELEV. No. 1

ELEV. No. 2

ELEV. No. 3  
FIRE FIGHTER'S &  
MOVING ELEVATOR

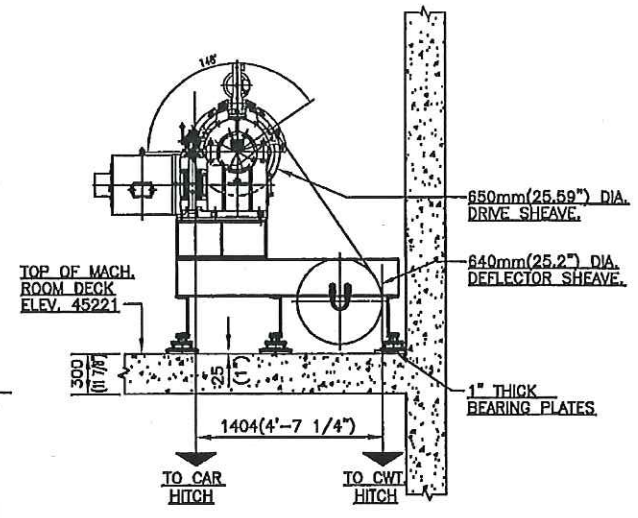
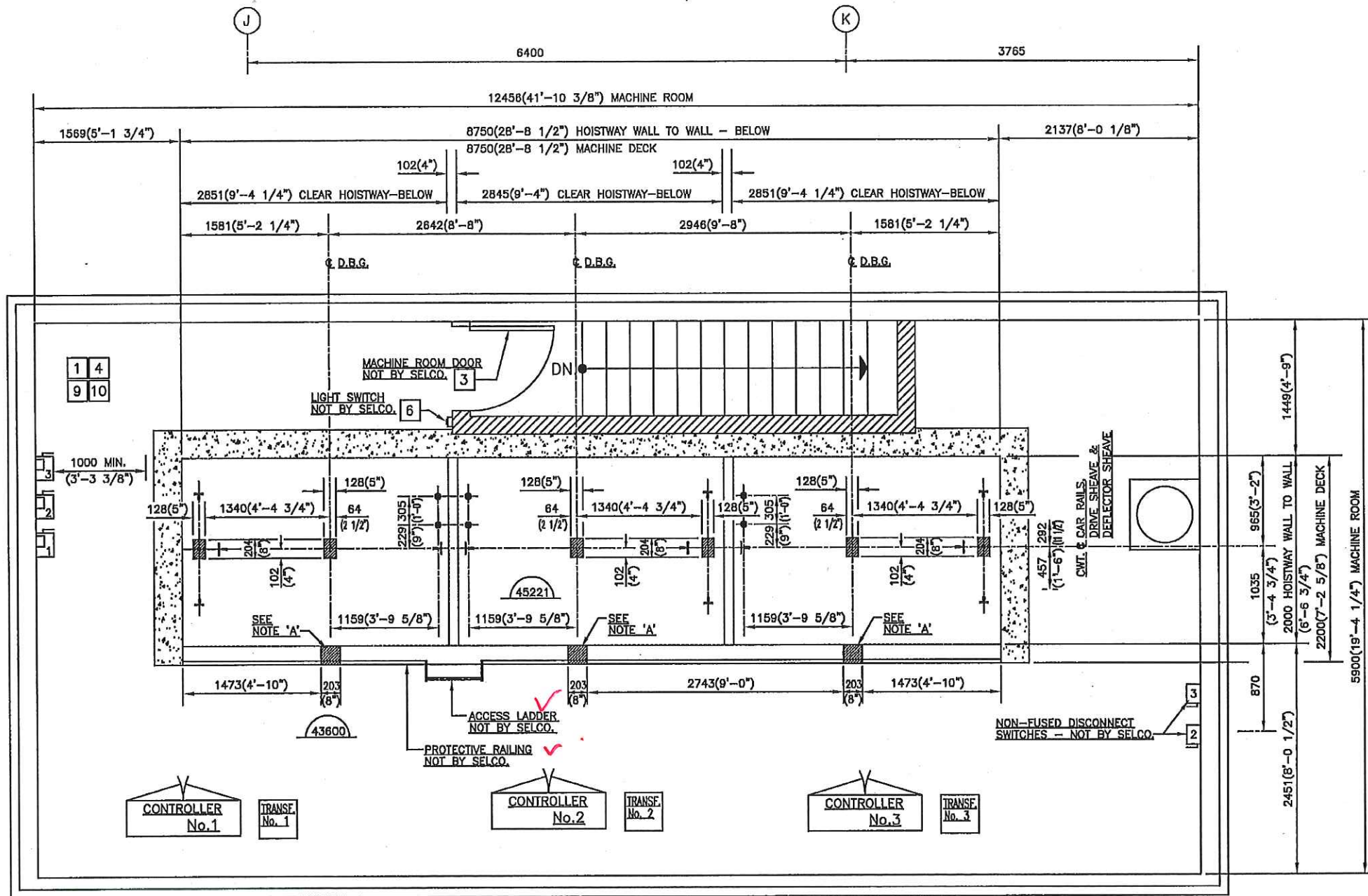
REACTIONS (INCLUDING IMPACT)	
A	36.5kN ( 8200lbs.)
B	26.5kN ( 6000lbs.)
C	26.5kN ( 6000lbs.)
D	22.0kN ( 5000lbs.)
E	7.0kN ( 1500lbs.)

**STRUCTURAL  
TO REVIEW.**

MACHINE ROOM PLAN

SQ ALEXANDRIA PARK  
BLOCK 11  
TORONTO, ONTARIO  
ELEVATORS No. 1 to 3  
MACHINE ROOM PLAN

'B'	MACHINE TYPE CHANGED, REACTION LOADS 'A' to 'D' REVISED, GOVERNORS ADDED.	W.T.	03/06/15
'A'	MACHINE ROOM SIZE REVISED, MACHINES NOW ON MACHINE DECK, PROTECTIVE RAILING & ACCESS LADDER ADDED. REACTION LOADS RELOCATED, GOVERNORS DELETED FROM MACHINE ROOM, FUSED MAIN LINE DISCONNECT SWS. RELOCATED, LAYOUT APPROVED AND MADE FINAL.	W.T.	12/27/14
No.	REVISION	BY	DATE
BLDG. NAME		SQ ALEXANDRIA PARK-BLOCK 11	
ADDRESS		TORONTO, ONT.	
THREE (3) GEARED PASSENGER ELEVATORS			
SELCO ELEVATORS LTD.			
DRWG. No.	SQ ALEX PARK	REV. 'B'	SHEET 5 of 8



MACHINE MOUNTING DETAIL

ELEV. No. 1  
 ELEV. No. 2  
 ELEV. No. 3  
 FIRE FIGHTER'S & MOVING ELEVATOR

MACHINE ROOM PLAN  
 HOLES IN FLOOR SLAB

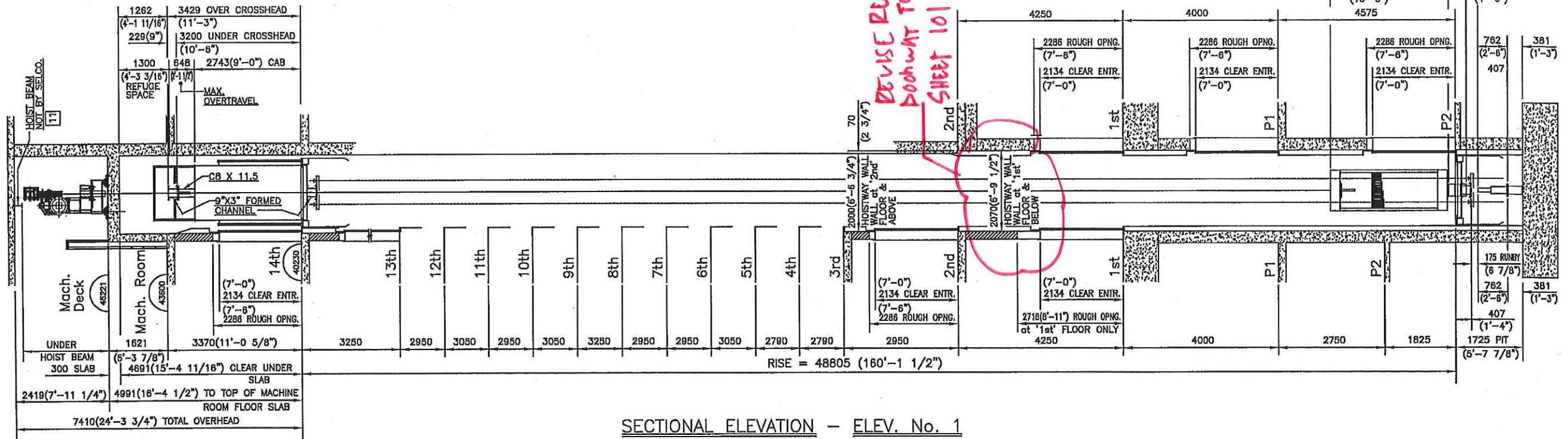


NOTE 'A':  
 203mm X 203mm (8" X 8")  
 WIRING HOLE IN FRONT WALL  
 DIRECTLY BELOW MACHINE  
 DECK FLOOR SLAB.

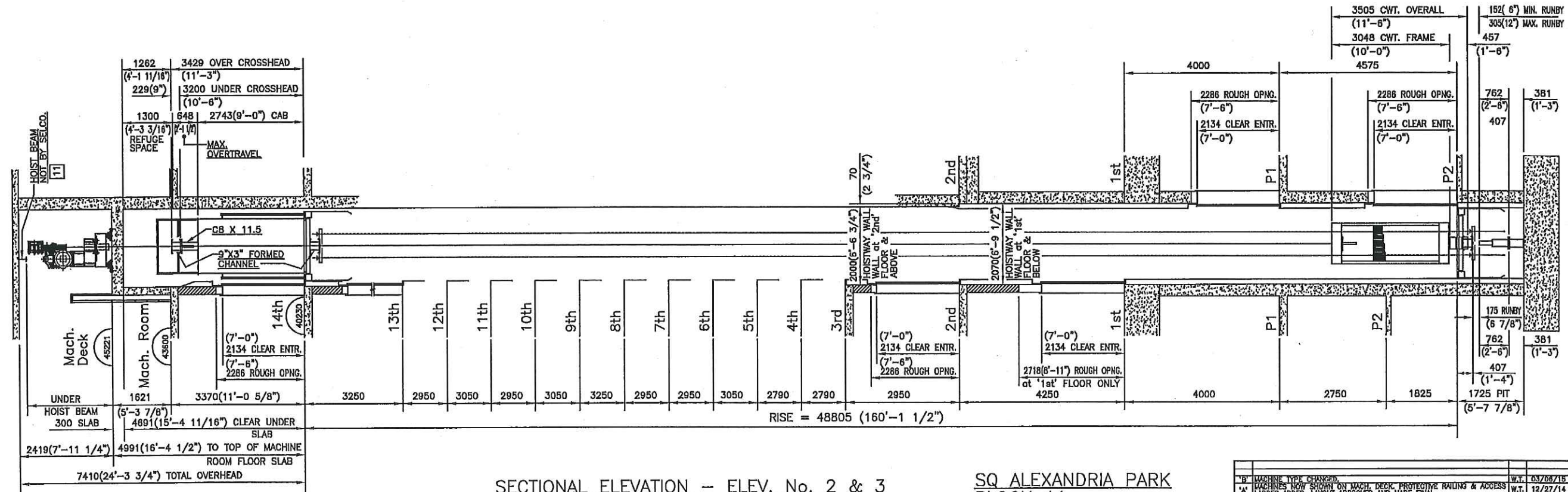
NOTE 'B':  
 SHADED AREAS ARE HOLES IN  
 MACHINE DECK FLOOR SLAB.  
 ALL ROUND HOLES ARE 64mm(2 1/2")  
 DIA. - NOT BY SELCO.

SQ ALEXANDRIA PARK  
 BLOCK 11  
 TORONTO, ONTARIO  
 ELEVATORS No. 1 to 3  
 MACHINE ROOM PLAN  
 HOLES IN FLOOR SLAB  
 MACHINE DETAIL

'B'	GOVERNOR ROPE HOLES ADDED, MACHINE MOUNTING DETAIL REVISED.	W.T.	02/08/15
'A'	MACHINE ROOM SIZE REVISED, MACHINE DECK ADDED, PROTECTIVE RAILING AND ACCESS LADDER ADDED, GOVERNORS NOW BELOW MACH. DECK FLOOR SLAB, WIRING HOLES ADDED IN FRONT HOISTWAY WALL. NOTE 'A' ADDED. LAYOUT APPROVED AND MADE FINAL.	W.T.	12/27/14
No.	REVISION	BY	DATE
BLDG. NAME	SQ ALEXANDRIA PARK-BLOCK 11		
ADDRESS	TORONTO, ONT.		
	THREE (3) GEARED PASSENGER ELEVATORS		
	<b>SELCO ELEVATORS LTD.</b>		
DRWG. No.	SQ ALEX PARK	REV.	SHEET
		'B'	6 of 8



SECTIONAL ELEVATION - ELEV. No. 1

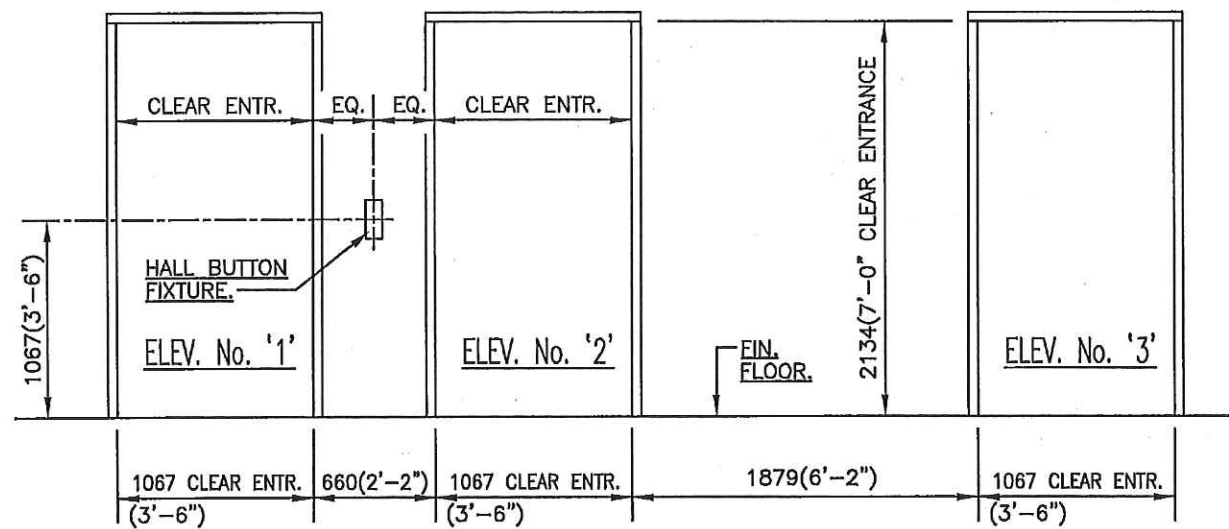


SECTIONAL ELEVATION - ELEV. No. 2 & 3

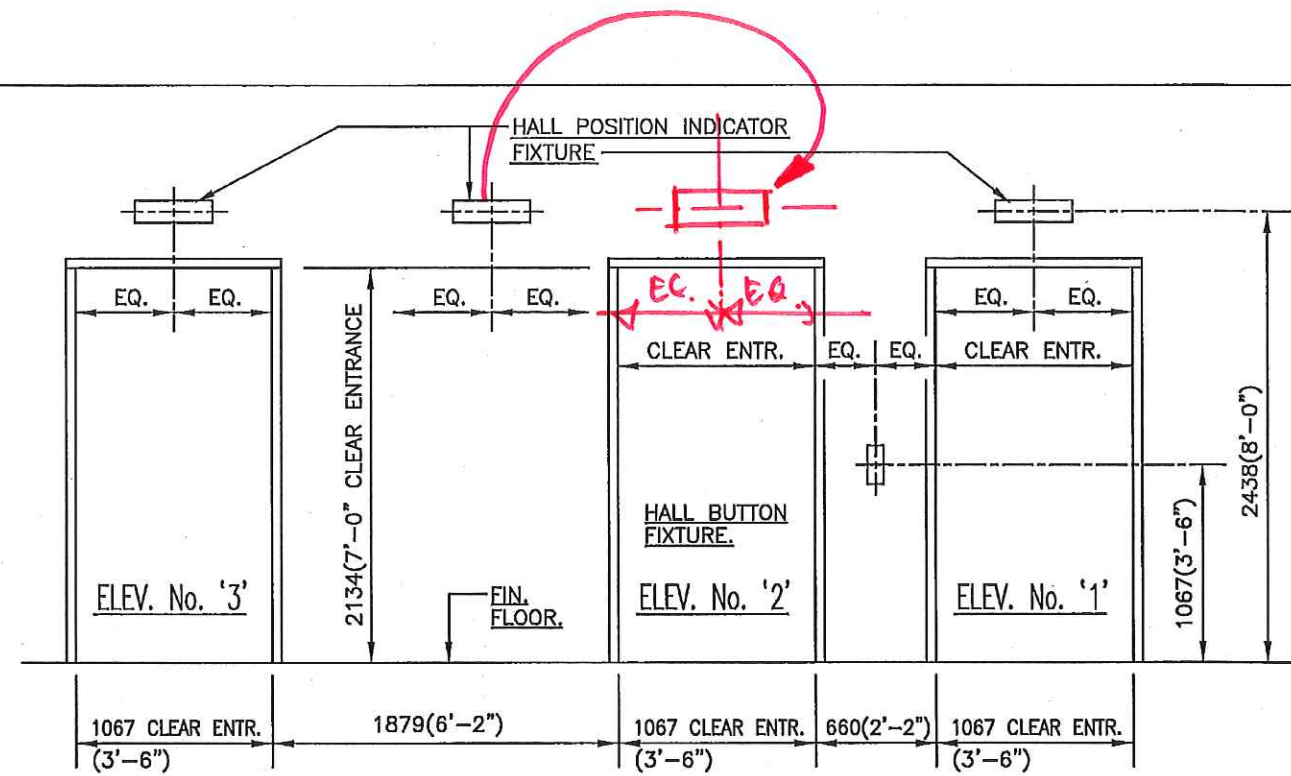
SQ ALEXANDRIA PARK  
 BLOCK 11  
 TORONTO, ONTARIO  
 ELEVATORS No. 1 to 3  
 SECTIONAL ELEVATIONS

W.T.	03/08/15
W.T.	12/27/14
BY	DATE
BLDG. NAME SQ ALEXANDRIA PARK	
ADDRESS TORONTO, ONT	
THREE (3) GEARED PASSENGER ELEVATORS	
SELCO ELEVATORS LTD.	
DRWG. No.	ALEX PARK
REV.	B
SHEET	7 of 8

*\* TUBEL TO CONFIRM IF THERE ARE INDICATORS AT THESE LEVELS. \**

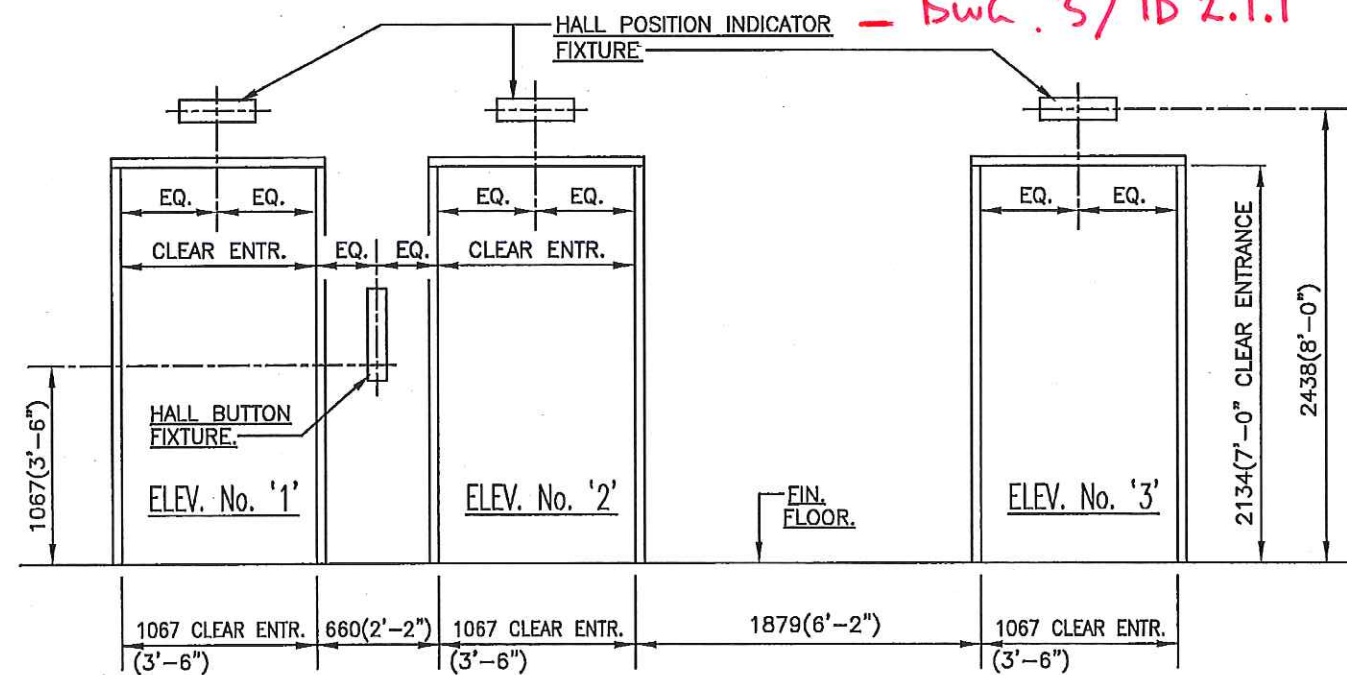


HALL FIXTURE DETAIL at '2nd' to '14th' FLOORS

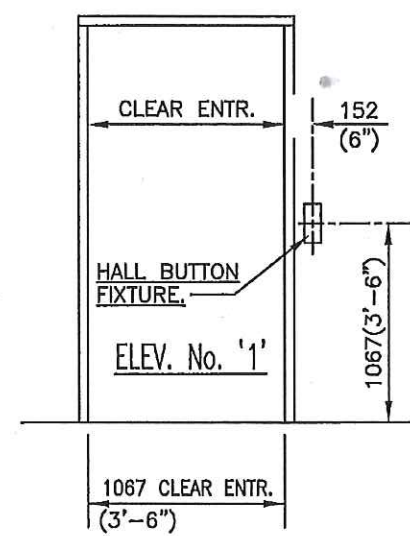


HALL FIXTURE DETAIL at 'P1' & 'P2' FLOORS

*TO BE COORDINATED WITH INTERIORS - DWG. 3/ID 2.1.1*



HALL FIXTURE DETAIL at '1st' FLOOR

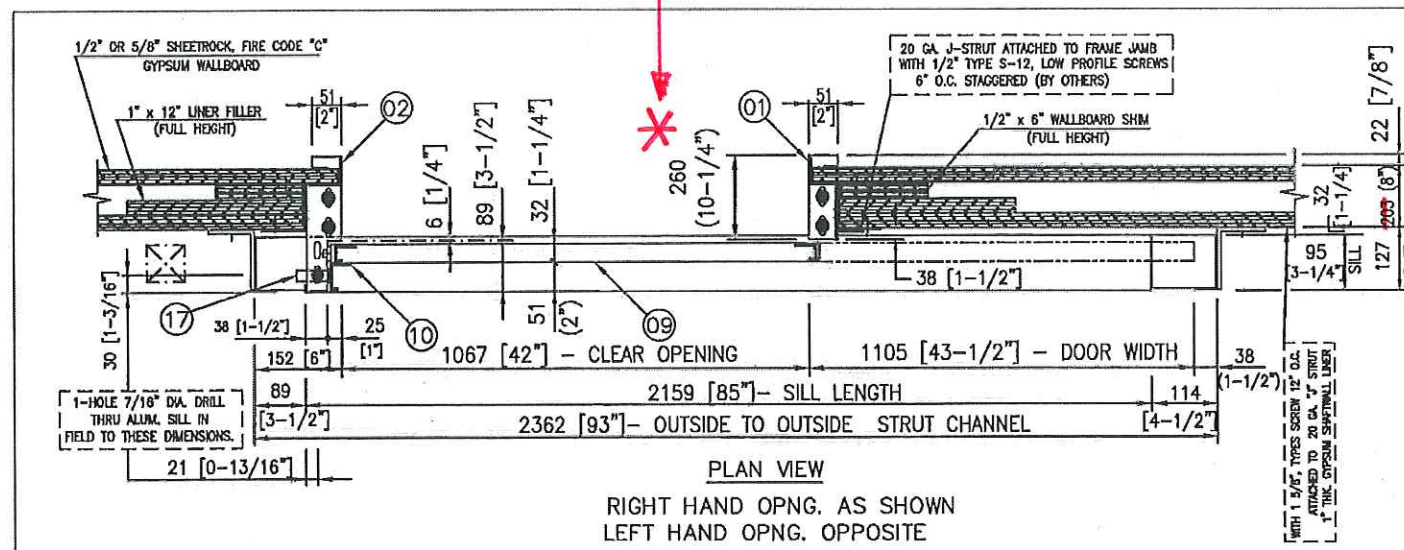


HALL FIXTURE DETAIL REAR ENTRANCE at '1st'

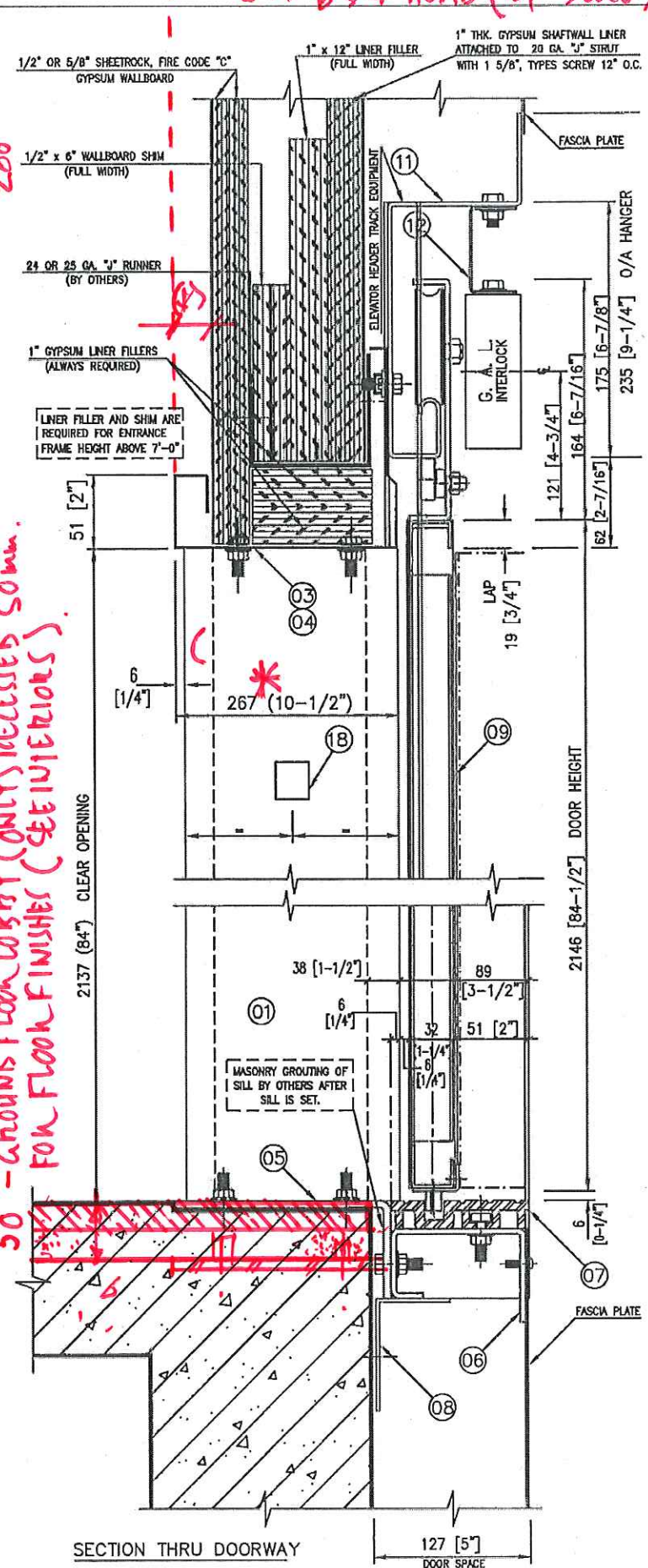
SQ ALEXANDRIA PARK  
BLOCK 11  
TORONTO, ONTARIO  
ELEVATORS No. 1 to 3  
HALL FIXTURE DETAILS

REV.	DATE	BY
1	10/03/15	
2	11/27/14	
BLDG. NAME   SQ ALEXANDRIA PARK - BLOCK 11 ADDRESS   TORONTO, ONT. THREE (3) GEARED PASSENGER ELEVATORS SELCO ELEVATORS LTD. DRWG. No.   SQ ALEX PARK   REV. B   SHEET 8 of 8		

DIMENSION FROM SHAFT WALL TO WALL FINISH (GLASS) LEVEL.  
 \* TO BE PROVIDED BY INTERIORS.  
 JAMBS & HEAD (BY SELCO) DIMENSIONS BY INTERIORS.



PLAN VIEW  
 RIGHT HAND OPNG. AS SHOWN  
 LEFT HAND OPNG. OPPOSITE



SECTION THRU DOORWAY

THIS DWG. NO.	QUAN.	PER UNIT	ITEM NO.	DESCRIPTION OR NAME OF PART	IDENTIFICATION NUMBER
6 [ ]-[ ]	GO2	GO2	001		
	1		01	SLIDE POST	
	1		02	STRIKE POST	
	1		03	HEADER TRIM	
			04		
	2		05	SUPPORT ANGLE	
	1		06	SILL SUPPORT CHANNEL	
	1		07	SILL -- ALUMINUM	
	1		08	GROUT ANGLE	
	1		09	HALL DOOR ASSEMBLY	
	1		10	SIGHT GUARD	
	1		11	HEADER TRACK	
	1		12	INTERLOCK SUPPORT BRACKET	
	2		13	STRUT CHANNEL	
	4		14	TE ANGLE	
	1		15	SPRINTER ASSEMBLY	
	1		16	MOUNTING BRACKET FOR INTERLOCK KEEPER	
	1		17	ACCESS KEY SWITCH @ 14th FLOOR	
	2		18	JAMB PLATE	

- 14 SETS OF RH ENTRANCES REQUIRED FOR ELEVATOR 1  
 (2 C.R.S. CLADDED WITH ST.STL.#4 FIN. 14TH & 1ST FLOORS  
 C.R.S. PRIME POWDER COAT FIN. FOR OTHER FLOORS)
- 14 SETS OF LH ENTRANCES REQUIRED FOR ELEVATOR 2  
 (2 C.R.S. CLADDED WITH ST.STL.#4 FIN. 14TH & 1ST FLOORS  
 C.R.S. PRIME POWDER COAT FIN. FOR OTHER FLOORS)
- 14 SETS OF LH ENTRANCES REQUIRED FOR ELEVATOR 3  
 (2 C.R.S. CLADDED WITH ST.STL.#4 FIN. 14TH & 1ST FLOORS  
 C.R.S. PRIME POWDER COAT FIN. FOR OTHER FLOORS)
- ENTRANCES ARE DRILLED FOR G.A.L. EQUIPMENT.
- EMERGENCY KEY-HOLE REQUIRED FOR ALL ENTRANCES.
- ENTRANCES ARE ULC LABELLED AND FIRE RATED FOR 1 1/2 HOUR.
- PLEASE CONFIRM <sup>200mm</sup> DRY WALL THICKNESS.

WALL ASSEMBLY IS 200mm THICK.  
 (CONC/ CONC.BLOCK (100)/ GYPSUM.  
 RD. WITH GYPSUM SHAFTWALL FINISH  
 AT HOISTWAY SIDE, GYPSUM FINISHING &  
 INTERIOR FINISHES, LOBBY SIDE.)  
 INTERIORS TO CONFIRM HOISTWAY  
 JAMB DEPTH & CONFIRM MATERIALS.

50 - Ground Floor Lobby (ONLY) RECESSED SOME.  
 FOR FLOOR FINISHES (SEE INTERIORS)

Teepie Architects INC.

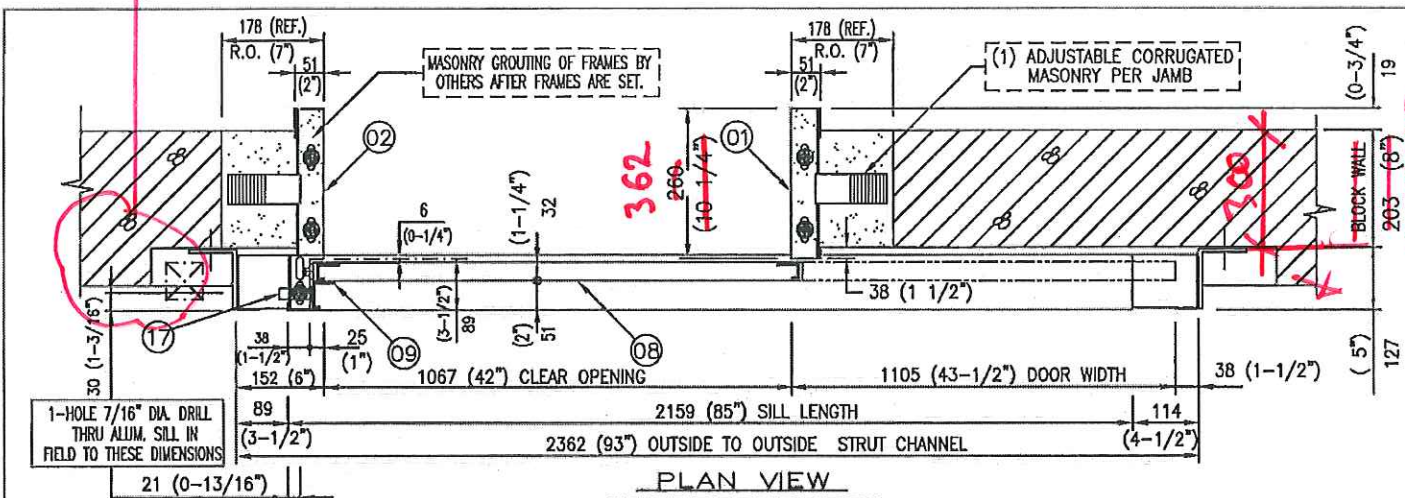
Reviewed  
 Reviewed as noted  
 Revise and resubmit  
 Not Reviewed

This review by Teepie Architects Inc. is for the sole purpose of providing an opinion on the design for general design concept. This review shall not mean that Teepie Architects Inc. approves the details, construction or materials shown in the drawings, or that it shall be responsible for the construction of the work. The Contractor of the responsible party shall not relieve the Contractor of the responsibility for errors or omissions in the shop drawings or the responsibility for meeting all requirements of the Contract Documents. The Contractor is responsible for dimensions to be confirmed and correlated at the construction processes of to construction and installation of the work of all trades.

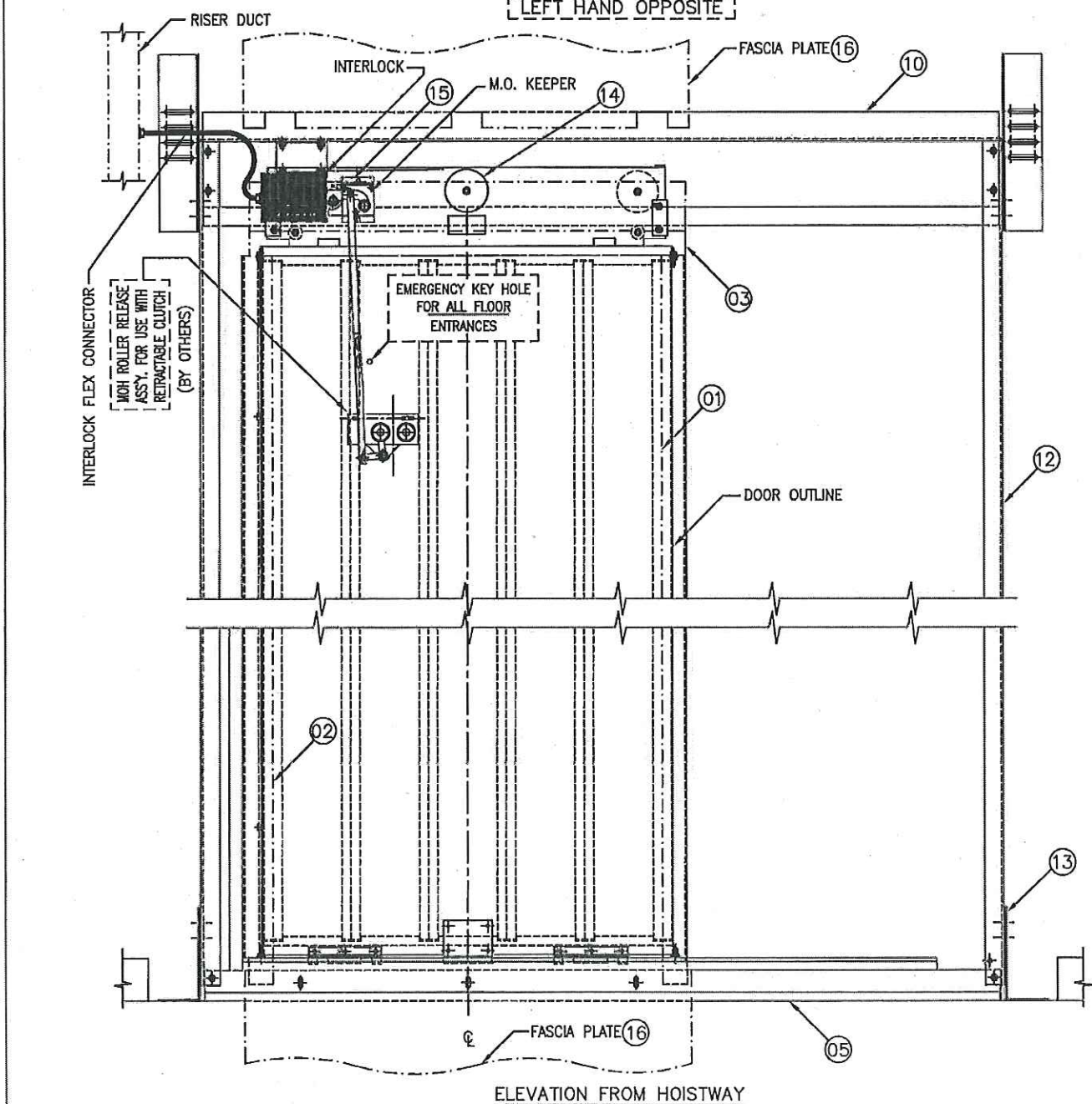
GROUP IDENTIFICATION		SELCO ELEVATORS LTD.	
THIS DRAWING IS THE PROPERTY OF SELCO ELEVATOR LTD. AND IS LOANED UNDER THE EXPRESS CONDITIONS THAT IT MUST NOT BE COPIED OR USED WITHOUT PERMISSION AND IS TO BE RETURNED ON DEMAND.			
SQ ALEXANDRIA PARK, TORONTO ON		DATE: DECEMBER 09/2015	
BLOCK 11, ELEVATORS 1-2-3 FRONT		DATE:	
REV. NO.	DATE	JOB NAME	REV. NO.
		HALL ENTRANCE ASSEMBLY-SINGLE SPEED 42"x84" OPNG.	
CONT. NO.		JOB NO. 12646-100	

NO RECESS AT REAR DOORS.

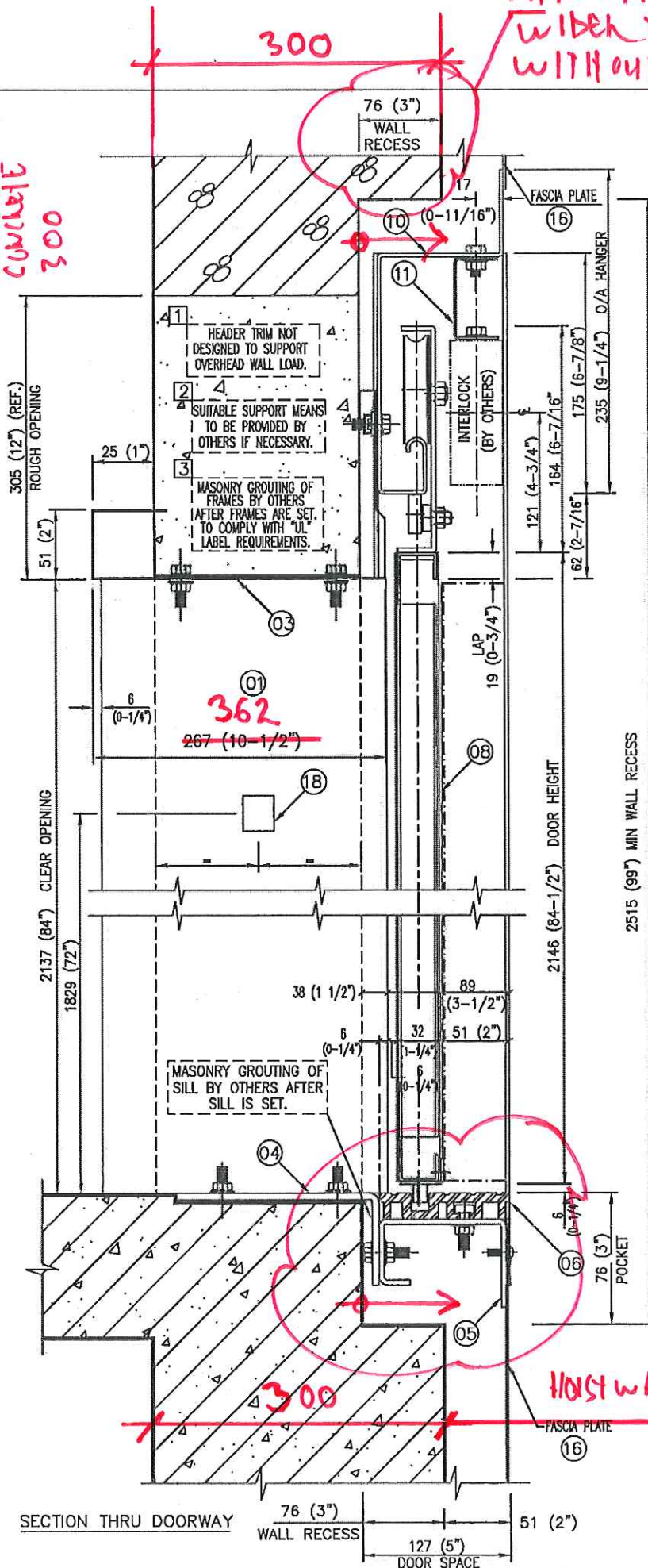
PIT SHAFT FROM P2 TO LEVEL 2 W/S. 70 mm. WIDER TO ACCOMMODATE HOISTWAY DOOR WITHOUT RECESS. SEE ARCHITECTURAL & SELCO SHOPS.



PLAN VIEW  
RIGHT HAND AS SHOWN,  
LEFT HAND OPPOSITE



ELEVATION FROM HOISTWAY



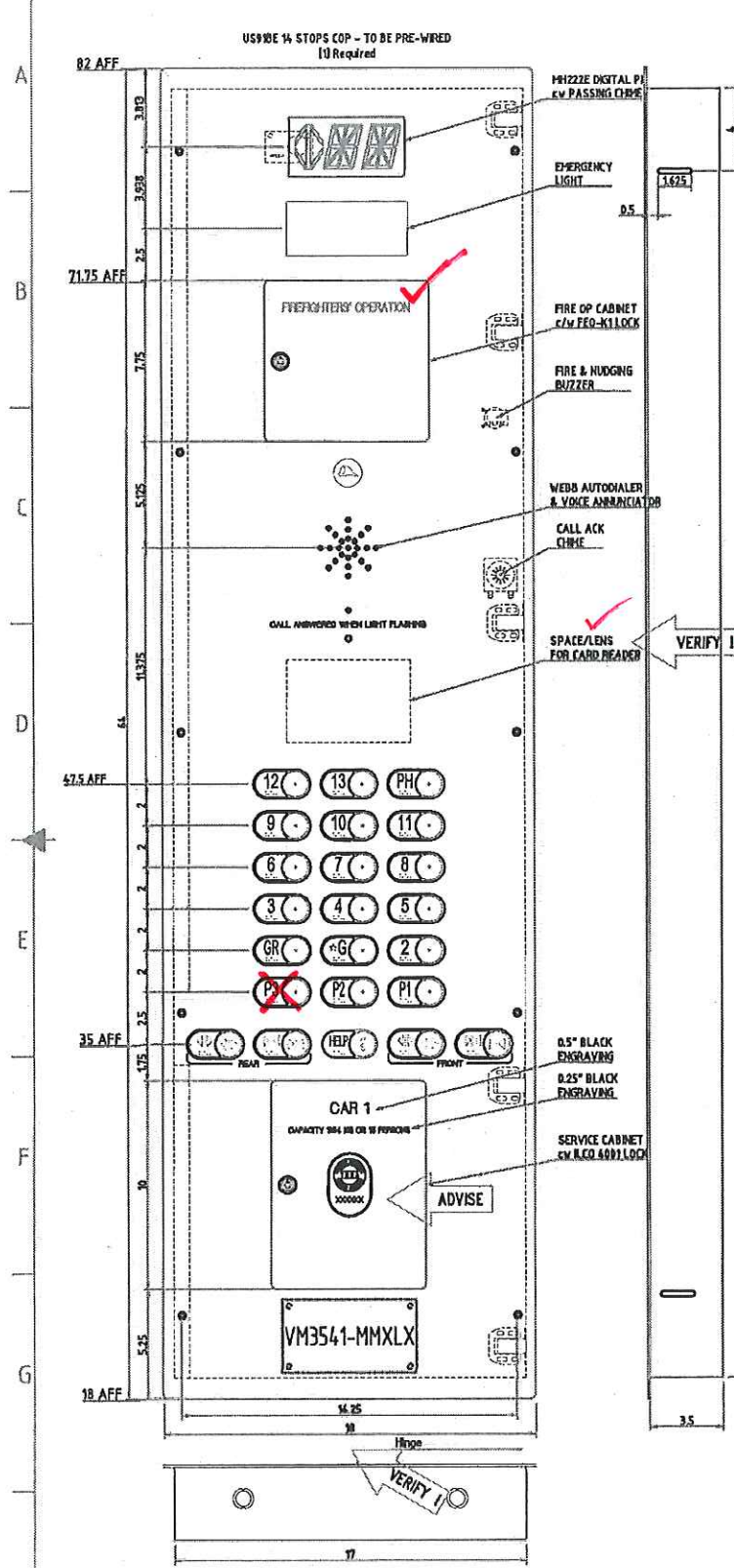
SECTION THRU DOORWAY

QTY	PER UNIT	ITEM NO.	DESCRIPTION OR NAME OF PART	IDENTIFICATION NUMBER
1	01	01	SLIDE POST	
1	02	02	STRIKE POST	
1	03	03	HEAD TRIM	
2	04	04	SUPPORT ANGLE	
1	05	05	SILL SUPPORT CHANNEL	
1	06	06	SILL --- ALUMINUM	
		07		
1	08	08	HALL DOOR ASSY	
1	09	09	SIGHT GUARD	
1	10	10	HEADER TRACK	
1	11	11	INTERLOCK SUPPORT BRACKET	
2	12	12	STRUT CHANNEL	
4	13	13	FIX ANGLES	
1	14	14	SPIRATOR	
1	15	15	MOUNTING BRACKET FOR INTERLOCK KEEPER	
2	16	16	FASCIA PLATE	
1	17	17	ACCESS KEY SWITCH @ P2 FLOOR	
2	18	18	JAMB PLATE	

- 2 SETS OF LH ENTRANCES REQUIRED FOR ELEVATOR 1 (C.R.S. PRIME POWDER COAT FIN. @ P1 & P2 FLOORS)
  - 2 SETS OF RH ENTRANCES REQUIRED FOR ELEVATOR 2 (C.R.S. PRIME POWDER COAT FIN. @ P1 & P2 FLOORS)
  - 3 SETS OF RH ENTRANCES REQUIRED FOR ELEVATOR 3 (C.R.S. PRIME POWDER COAT FIN. @ 1ST; P1 & P2 FLOORS)
- TRIBL TO CONFIRM PAINT AT MOVING ROOM.**
- ENTRANCE DRILLED FOR G.A.L. EQUIPMENT.
  - EMERGENCY KEY-HOLE REQUIRED.
  - ENTRANCES ARE ULC LABEL AND FIRE RATED FOR 1 1/2 HOUR.
  - PLEASE CONFIRM ~~8"~~ BLOCK WALL THICKNESS.
- 300 CAST IN PLACE CONCL. / SHAFT WALL.**

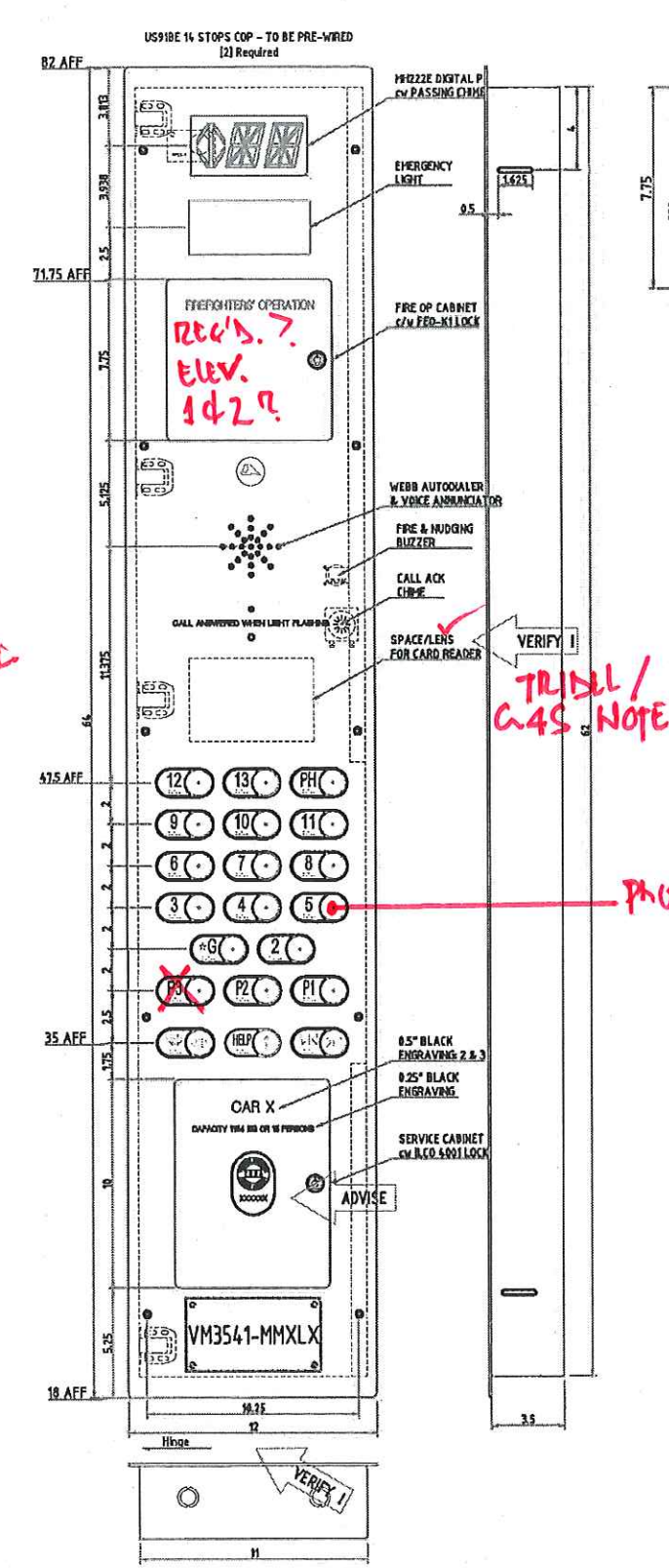
HOISTWAY 2010 SEE SELCO SHEET 7 OF 8

REV. NO.		DATE	JOB NAME	GROUP IDENTIFICATION	DATE
THIS DRAWING IS THE PROPERTY OF BECKETT ELEVATOR LTD. AND IS LOANED UNDER THE EXPRESS CONDITIONS THAT IT MUST NOT BE COPIED OR USED WITHOUT PERMISSION AND IS TO BE RETURNED ON DEMAND.				SELCO ELEVATORS LTD.	
SQ ALEXANDRIA PARK, TORONTO ON BLOCK 11, ELEVATORS 1-2-3 - REAR				A.P. DATE: 02/24/00/2015	
HALL ENTRANCE ASSEMBLY-SINGLE SPEED 42"x84" OPNG.				REV. NO. 12646-101	



ELEV 3

TRIBEL / C.45 NOTE

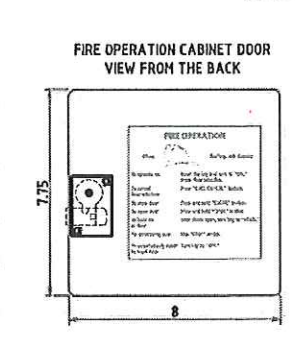


ELEV. 1, 2.

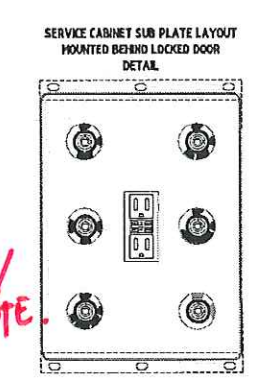
TRIBEL / C.45 NOTE

PROVIDE SAMPLE.

NO P3



ELEV 3 IS FIREFIGHTERS.



VERIFY 1

VERIFY 1

Item Ref	Quantity	Title/Name, designation, material, dimension etc	Article No./Reference
<b>CONTROLLER: GAL</b>			
<b>MATERIALS</b>			
Face Plates		12Ga SS H4 Brush Finish, Grain Vertical (unless noted)	
Back Box		16Ga Safin Coat	
<b>PUSHBUTTONS / BRAILLE</b>			
Pushbutton Style (COP)		US91E	
Alarm Pushbutton (COP)		N/A	
Call Cancel Pushbutton		US91 C3, RED, W/O W/C Non-III - Flush Mount	
Contacts (COP and H/S)		2 W/O for All Buttons UNLESS NOTED	
Button Illumination Type		24V C3 L.E.D.	
D/O, D/C Button Illumination		Non Illuminated, W/O W/C	
Phone Button Illumination		Non Illuminated	
Braille Type		TAG91 (SATIN LEGEND ON BLACK BACKGROUND)	
<b>VISUAL INDICATORS</b>			
Fire Hat Indicator		UL91 Indicator, 24V Red LED Illuminated	
<b>AUDIBLE INDICATORS</b>			
Fire, Nudging Buzzers		24VAC	
Call Ack. Chime		24VAC	
<b>MISC</b>			
Hinge Side of C.O.P.		RIGHT (CAR 1 & LEFT (CAR 2 & 3)	
Emergency Light		Dupar Complete LED Unit, with Battery	
<b>COMMUNICATIONS</b>			
Auto Dialer		WEBB MWP50 c/w output for voice announc.	
<b>KEYSWITCHES</b>			
Fire Service Cabinet Lock		FEO-K1 Barrel (Key removable @ 12 O'Clock Only)	
Service Cab Lock		I.L.C.O. X4001 Barrel (Key removable @ 12 O'Clock Only)	
1st Service K/S		US91STXR2C1 (I.L.C.O. 4001 Key, 2 Pos. Removable in Both, 2ND, 2NC contacts)	
Light K/S		US91STXR2A0 (I.L.C.O. 4000 Key, 2 Pos. Removable in Both, 2ND contacts)	
Fan (2 speed) K/S		US91STXR3T1 (I.L.C.O. 4001 Key, 3 Pos. Removable in All, 2ND, 2NC contacts)	
Access Enable K/S (COP)		US91STXR2C2 (I.L.C.O. 4002 Key, 2 Pos. Removable in Both, 2ND, 2NC contacts)	
Emergency Light Test K/S		US91STXR101 (I.L.C.O. 4001 Key, Spring return, W/O NC contacts)	
Run/Stop - in Car Station		US91STXR2C2 (I.L.C.O. 4002 Key, 2 Pos. Removable in Both, 2ND, 2NC contacts)	
Run/Stop - in Fire Operation Cab.		2 Positions Toggle switch	
Fire Operation K/S		US91STXR2T1K1 (FEO-K1, 3 Pos., Trapped in "ON", 2ND, 2NC contacts)	
<b>DIGITAL P.L. &amp; VOICE ANNUNCIATOR</b>			
Car		PH222E-RRR (2 DIGITS, 1 ARROW)	
Voice Annunciator		VH3541-MMXLX (ENGLISH)	
Floor Markings		P2, PL G, 2-EB, PH (P3, P2 & P1 OPEN AT REAR ONLY; CAR1 ONLY REAR OPENING AT FLOOR #)	
SPECIAL INSTRUCTIONS: CUSTOMER TO PROVIDE WIRING DIAGRAM UPON APPROVAL			

INTERACT TO CONFIRM.

ELEV 3. ONLY?

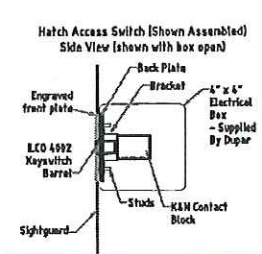
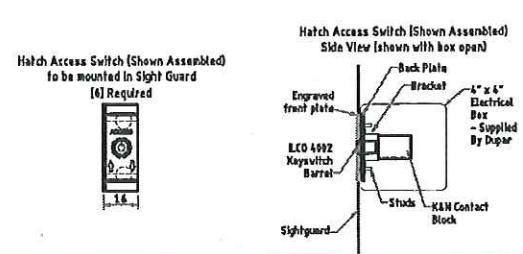
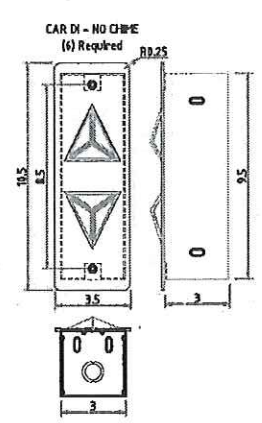
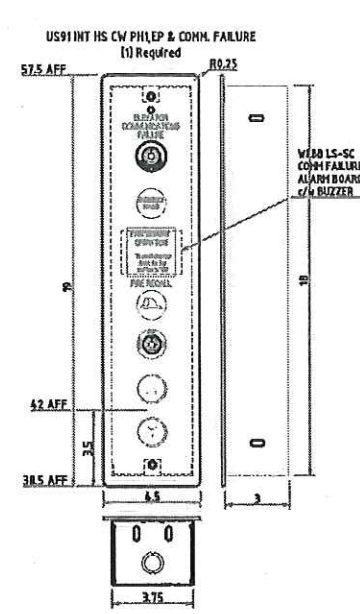
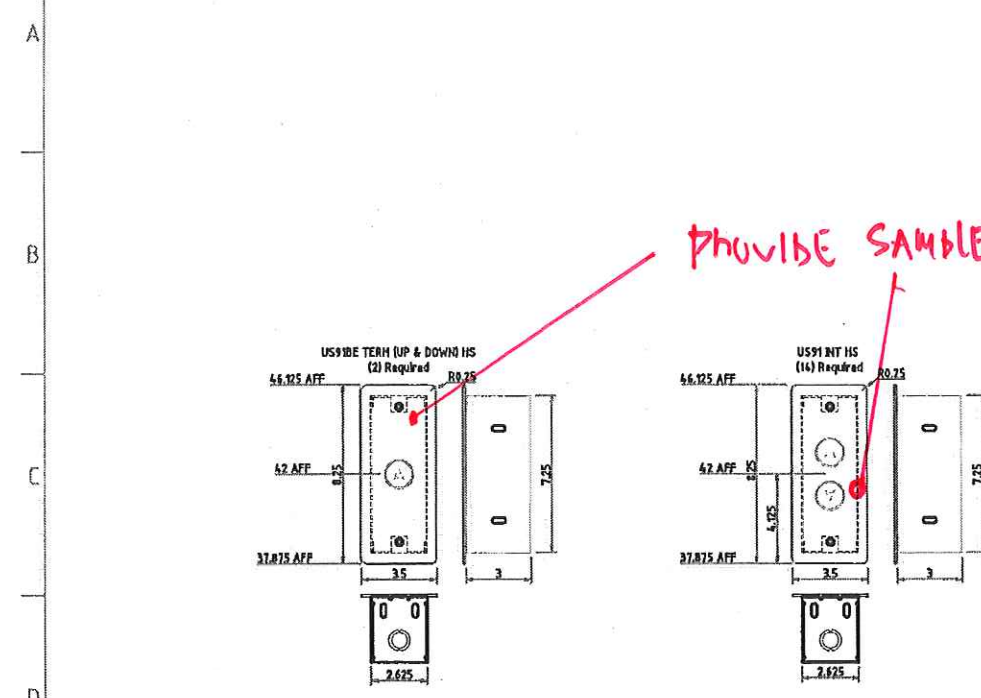
APPROVAL OF THIS DRAWING IS YOUR ACCEPTANCE THAT ALL DATA CONTAINED THEREIN IS CORRECT. CHANGES REQUIRED AFTER APPROVAL MAY INCUR EXTRA COST.

APPROVED AS NOTED  
REVIS AS NOTED  
RESUBMIT DRAWINGS  
RELEASE FOR FABRICATION

SIGNATURE \_\_\_\_\_ DATE \_\_\_\_\_  
NAME (PRINT) \_\_\_\_\_

Designed by DH	Checked by	Approved by - date	Customer SELCO	Date 12/15/16	Scale 1:1
DATE REV. DESCRIPTION DWN. APPVD.			SQ ALEXANDRIA PARK BLOCK 11 1,2,3		
DUPAR CONTROLS			D142030A		
			Edition 0 Sheet 1/3		

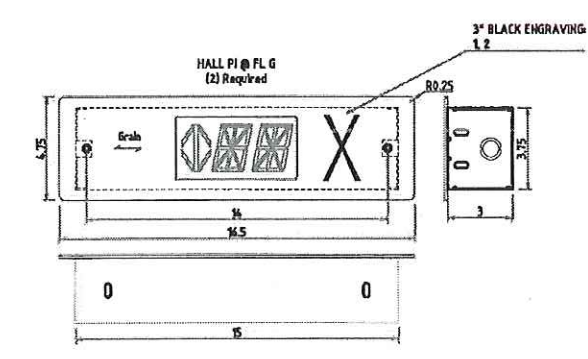
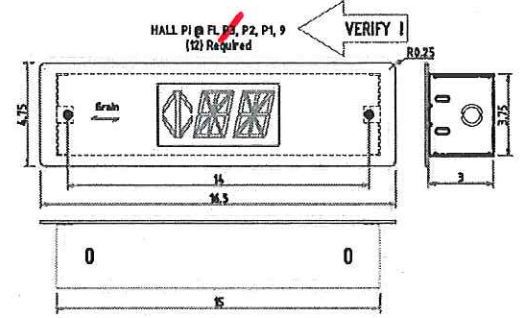
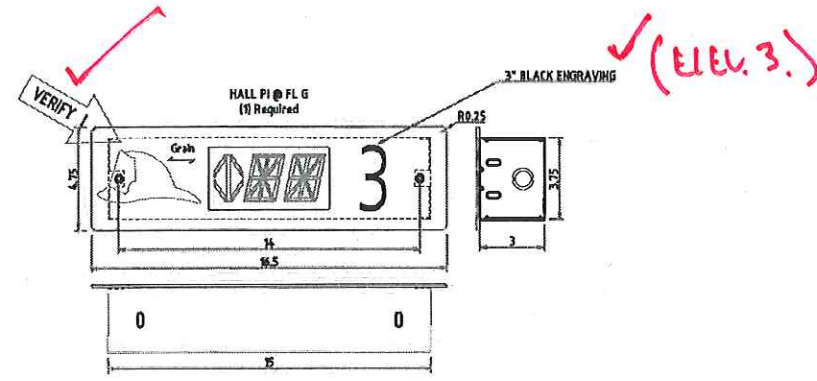
RevNo	Revision note	Date	Signature	Checked



**Teepie Architects** INC.

Reviewed (✓)  
Reviewed as noted (✓)  
Revise and resubmit ( )  
Not Reviewed ( )  
Date: 2015-0723.  
Reviewed by:

This review by Teepie Architects Inc. is for the sole purpose of ascertaining conformance with the general design concept. This review shall not mean that Teepie Architects Inc. approves the detailed design inherent in the shop drawings, responsibility for which shall remain with the Contractor submitting same, and such review shall not relieve the Contractor of the responsibility for errors or omissions in the shop drawings or of the responsibility for meeting all requirements of the Contract Documents. The Contractor is responsible for dimensions to be confirmed and correlated at the job site, for information that pertains solely to fabrication processes or to techniques of construction and installation, and for coordination of the work of all trades.



VERIFY 1

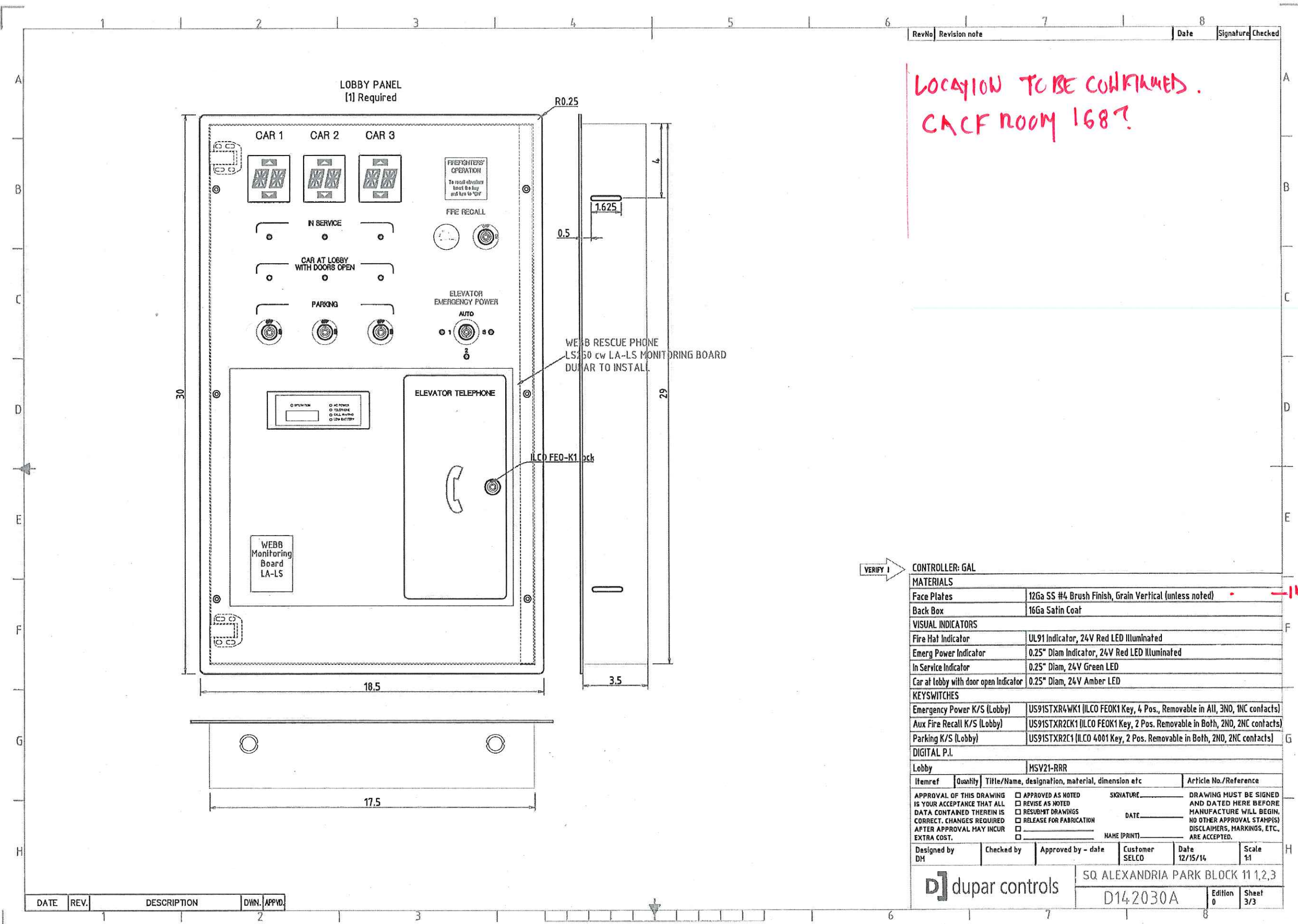
CONTROLLER:	GAL
<b>MATERIALS</b>	
Face Plates	12Ga SS #4 Brush Finish, Grain Vertical (unless noted)
Back Box	16Ga Satin Coat
<b>PUSHBUTTONS</b>	
Pushbutton Style	US91BE
Contacts	2 N/O C3 for All Buttons
Button Illumination Type	24V C3 L.E.D.
<b>VISUAL INDICATORS</b>	
Fire Hat Indicator	UL91 Indicator, 24V Red LED Illuminated
Emergency Power Indicator	UL91 Indicator, 24V Red LED Illuminated
Direction Arrows	2.625\" c/w 24V RED (down) & GREEN (up) LED Boards
<b>AUDIBLE INDICATORS</b>	
Car Lantern Chime	N/A
<b>KEYSWITCHES</b>	
Access K/S (Hall)	ILCO key 4002, Double Spring Return, K&N CD2508
Fire Recall K/S	US91STR2K1 (FE0-K1, 3 Pos., Trapped in "RESET", 2NO, 2NC contacts)
Alarm Reset K/S	US91STRX1 (ILCO 4001 Key, Spring return, 1NO 1NC contacts)
<b>DIGITAL P.I.</b>	
Hall	HH222-RRR (ARROW, 2 DIGITS)

INTERIORS?

ELLV.3

Itemref	Quantity	Title/Name, designation, material, dimension etc	Article No./Reference
APPROVAL OF THIS DRAWING IS YOUR ACCEPTANCE THAT ALL DATA CONTAINED THEREIN IS CORRECT. CHANGES REQUIRED AFTER APPROVAL MAY INCUR EXTRA COST.			
<input type="checkbox"/> APPROVED AS NOTED <input type="checkbox"/> REVISE AS NOTED <input type="checkbox"/> RESUBMIT DRAWINGS <input type="checkbox"/> RELEASE FOR FABRICATION <input type="checkbox"/> _____ NAME (PRINT) <input type="checkbox"/> _____ DATE	SIGNATURE _____		DRAWING MUST BE SIGNED AND DATED HERE BEFORE MANUFACTURE WILL BEGIN. NO OTHER APPROVAL STAMPS/ DISCLAIMERS, MARKINGS, ETC. ARE ACCEPTED.
Designed by DM	Checked by	Approved by - date	Customer SELCO Date 12/15/14 Scale 1:1
		SQ ALEXANDRIA PARK BLOCK 11,12,3 D142030A Edition 0 Sheet 2/3	

DATE	REV.	DESCRIPTION	DWN.	APPVD.



LOCATION TO BE CONFIRMED.  
C.A.C.F ROOM 168?

VERIFY

CONTROLLER: GAL			
MATERIALS			
Face Plates	12Ga SS #4 Brush Finish, Grain Vertical (unless noted)		
Back Box	16Ga Satin Coat		
VISUAL INDICATORS			
Fire Hal Indicator	UL91 Indicator, 24V Red LED Illuminated		
Emerg Power Indicator	0.25" Diam Indicator, 24V Red LED Illuminated		
In Service Indicator	0.25" Diam, 24V Green LED		
Car at lobby with door open Indicator	0.25" Diam, 24V Amber LED		
KEYSWITCHES			
Emergency Power K/S (Lobby)	US91STXR4WK1 (ILCO FE0K1 Key, 4 Pos., Removable in All, 3NO, 1NC contacts)		
Aux Fire Recall K/S (Lobby)	US91STXR2CK1 (ILCO FE0K1 Key, 2 Pos. Removable in Both, 2NO, 2NC contacts)		
Parking K/S (Lobby)	US91STXR2C1 (ILCO 4001 Key, 2 Pos. Removable in Both, 2NO, 2NC contacts)		
DIGITAL P.I.			
Lobby	MSV21-RRR		
Itemref	Quantity	Title/Name, designation, material, dimension etc	Article No./Reference
APPROVAL OF THIS DRAWING IS YOUR ACCEPTANCE THAT ALL DATA CONTAINED THEREIN IS CORRECT. CHANGES REQUIRED AFTER APPROVAL MAY INCUR EXTRA COST.		<input type="checkbox"/> APPROVED AS NOTED <input type="checkbox"/> REVISE AS NOTED <input type="checkbox"/> RESUBMIT DRAWINGS <input type="checkbox"/> RELEASE FOR FABRICATION	SIGNATURE _____ DATE _____ NAME (PRINT) _____
Designed by DM	Checked by	Approved by - date	Customer SELCO
Date 12/15/14	Scale 1:1	SQ ALEXANDRIA PARK BLOCK 11 1,2,3	
D] dupar controls		D142030A	Edition 0
		Sheet 3/3	

INTERIORS

DATE	REV.	DESCRIPTION	DWN.	APPVD.

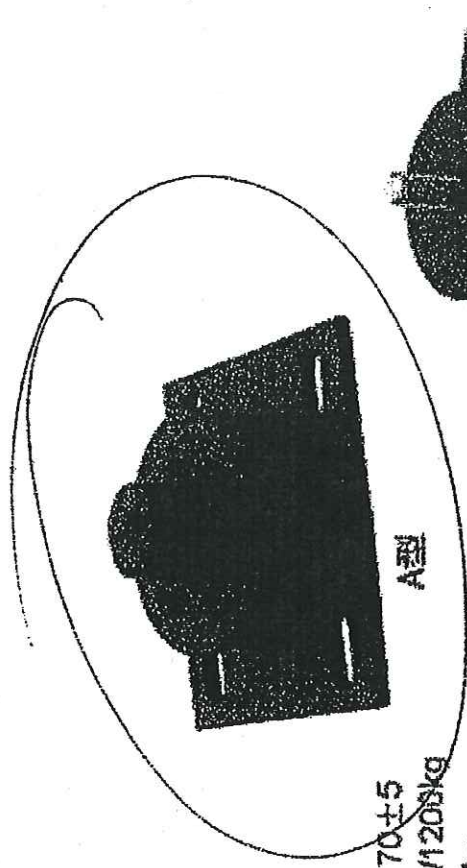






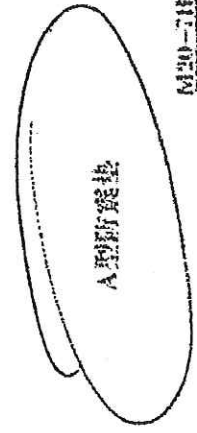
# 减震垫

Absorber



硬度 邵氏 70±5  
 变形量 2mm/120kg  
 极限载荷 6000kg  
 粘合力 Agglutinated Power: ≥25kg/cm<sup>2</sup>

B型



A型防震垫

B型防震垫

