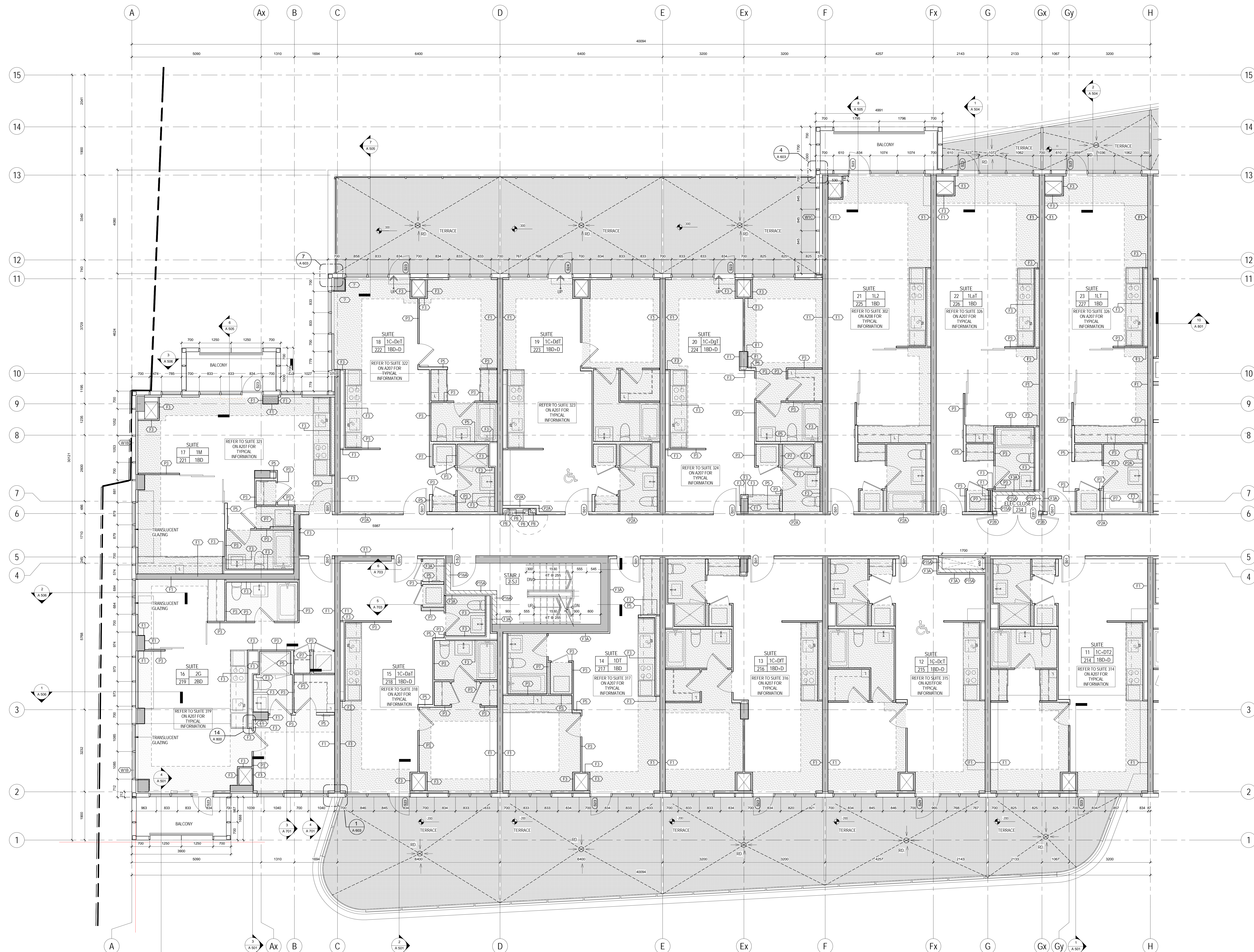
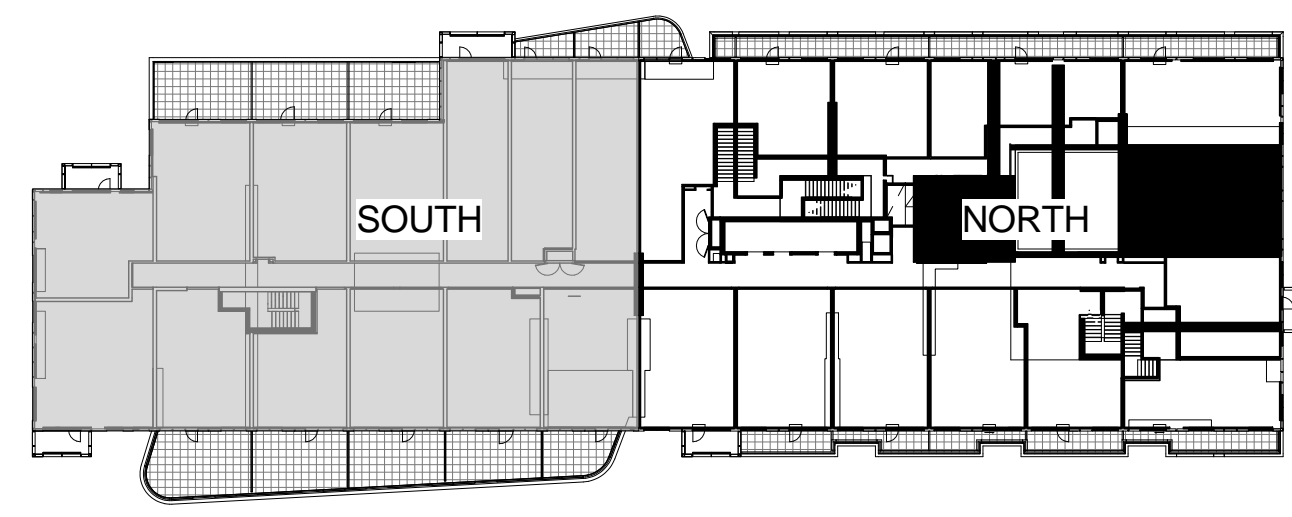


**DUAL GENERAL LEGEND**

- GYPSUM BOARD PARTITION WALL AT 125mm (5") UNLESS NOTED
- GYPSUM BOARD PARTITION WALL AT 240mm (9.5") UNLESS NOTED
- YELLOW METAL PANEL CLADDING
- EXTERIOR WALL ASSEMBLY W/A UNLESS NOTED OTHERWISE
- ♿ DENOTES BARRIER-FREE DESIGNATED RESIDENTIAL SUITE
- ☀ DENOTES ROOF TERRACE AND ROOF TERRACE ACCESS TO SUNLIT PLAZA FOR SUITES AND SUNLIT PLAZA
- ANCHOR POINT
- DWMT BASE
- RECESSED DWMT BASE
- RECESSED ROOF ANCHOR
- ROOF ANCHOR
- ROOF ANCHOR - WALL MOUNTED
- WINDOW WASHING RIGGING SLIDE

REFER TO Dwg. 4020 FOR DETAILS OF WINDOW WASHING SYSTEMS



**METRIC SCALE DRAWING**  
FIRST FLOOR ELEV. +93.60m

No.	ISSUED/REVISION FOR	DATE
1	Issued for SPA	2013-03-28
2	Issued for Coordination	2013-04-11
3	Issued for Coordination	2013-04-19
4	Revised for SPA	2014-01-10
5	Issued for Coordination	2014-02-28
6	Issued for Elevator Tender	2014-04-07
7	Issued for Coordination	2014-05-07
8	Issued for 10% Completion	2014-06-23
9	Issued for Permit	2014-08-20
10	Issued for Coordination	2014-08-23
11	Revised for Permit	2014-07-10
12	Revised for Permit	2014-08-22
13	Issued for Tender	2014-08-28
14	Issued for Tender	2014-08-28
15	Issued for Flooring Tender	2015-03-10

**SQ ALEXANDRA PARK - BLOCK 11**  
38 CAMERON ST. TORONTO, ONTARIO M5T 2H2

project no. 12-115  
scale: As indicated  
drawn by: TA  
reviewed by: SH  
date: 2014-09-22

**Teepie Architects**  
LEVEL 2 PLAN SOUTH

1 LEVEL 2 PLAN SOUTH  
A 205 1:50