

DUAL PARTIAL SYSTEM

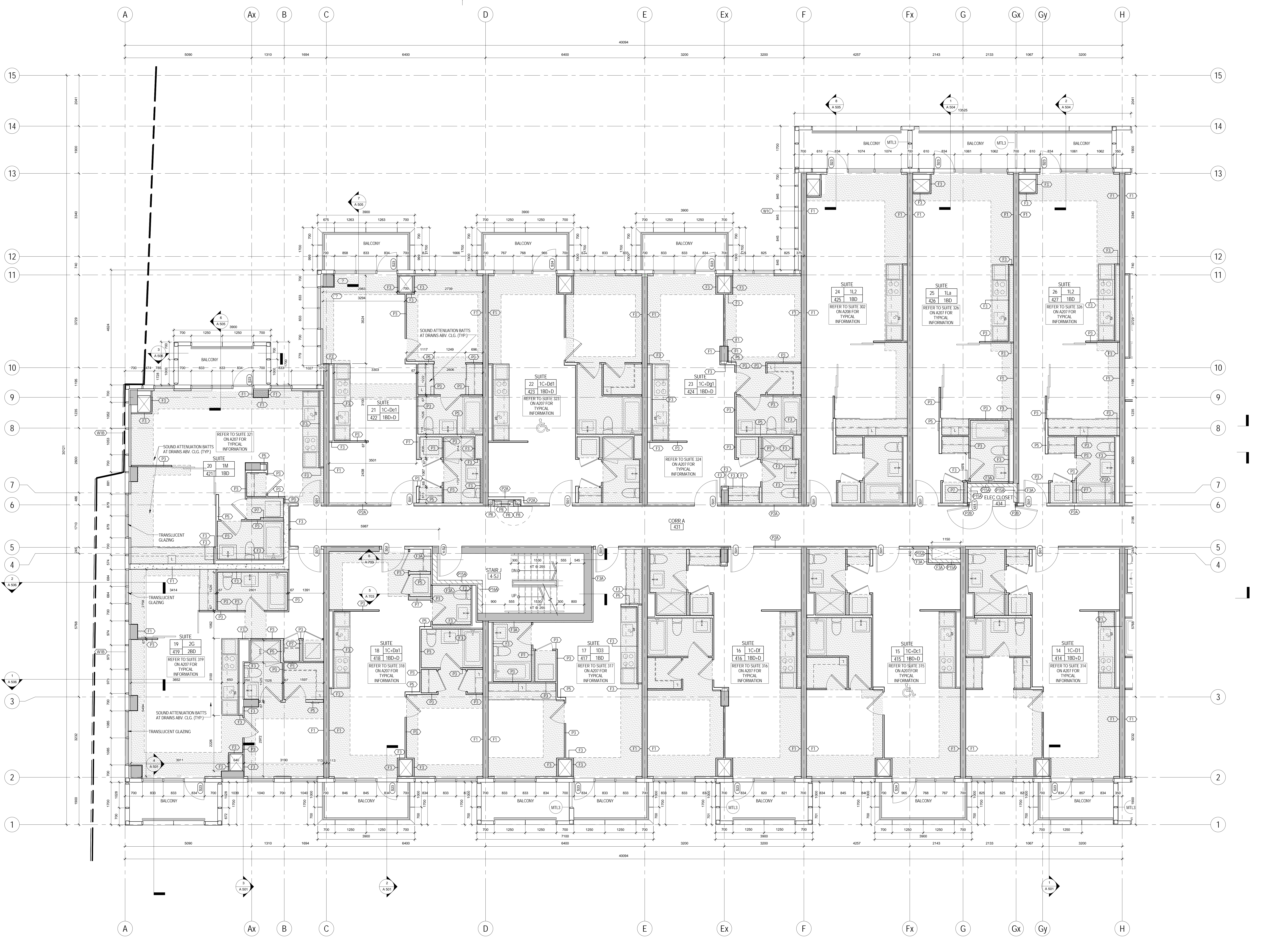
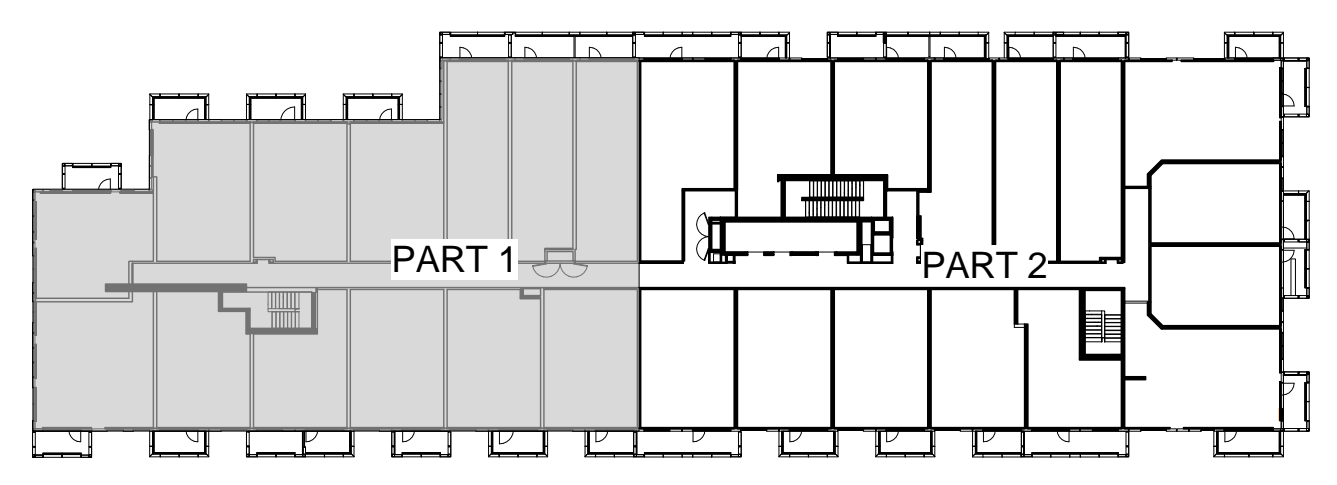
- GYPSUM PLASTER OVER GYPSUM BULKHEAD AT 2250mm AHT UNLESS NOTED
- MTL YELLOW METAL PANEL CLADDING
- EXTERIOR WALL ASSEMBLY W/A UNLESS NOTED OTHERWISE

DEMOTES BARRED-LEVEL DESIGNATED RESIDENTIAL SUITE

DEMOTES ROOF BRUSH AND ROOF DRAINAGE SYMBOLS REFER TO SLAB EDGE PLANS FOR SUITES AND BALCONY DRAINAGE

REFER TO Dwg. 4405 FOR DETAILS OF WINDOW WASHING SYSTEMS

- AP ANCHOR POINT
- DBT DWAIT BASE
- RECESSED DWAIT BASE
- RECESSED ROOF ANCHOR
- ROOF ANCHOR
- ROOF ANCHOR - WALL MOUNTED
- WINDOW WASHING RIGGING SLIDE



METRIC SCALE DRAWING
FIRST FLOOR ELEV. +93.60m

No.	ISSUED/REVISION FOR	DATE
1	Issued for SPA	2013-03-28
2	Issued for Coordination	2013-04-11
3	Issued for Coordination	2013-04-19
4	Revised by SPA	2014-01-19
5	Issued for Coordination	2014-02-28
6	Issued for Tender Tender	2014-04-07
7	Issued for Coordination	2014-04-23
8	Issued for 10% Completion	2014-05-21
9	Issued for Permit	2014-05-28
10	Issued for Coordination	2014-06-23
11	Revised by Permit	2014-07-01
12	Revised by Permit	2014-08-22
13	Issued for Tender	2014-08-28
14	Issued for Tender	2014-09-22
15	Issued for Flooring Tender	2015-03-10

SQ ALEXANDRA PARK - BLOCK 11
38 CAMERON ST., TORONTO, ONTARIO M5T 2H2

project no. 12-115
scale: As indicated
drawn by: TAU
reviewed by: JH
date: 2014-09-22

Teepie Architects
LEVEL 4 PLAN SOUTH