

**DUAL PERSONAL CLOSET**

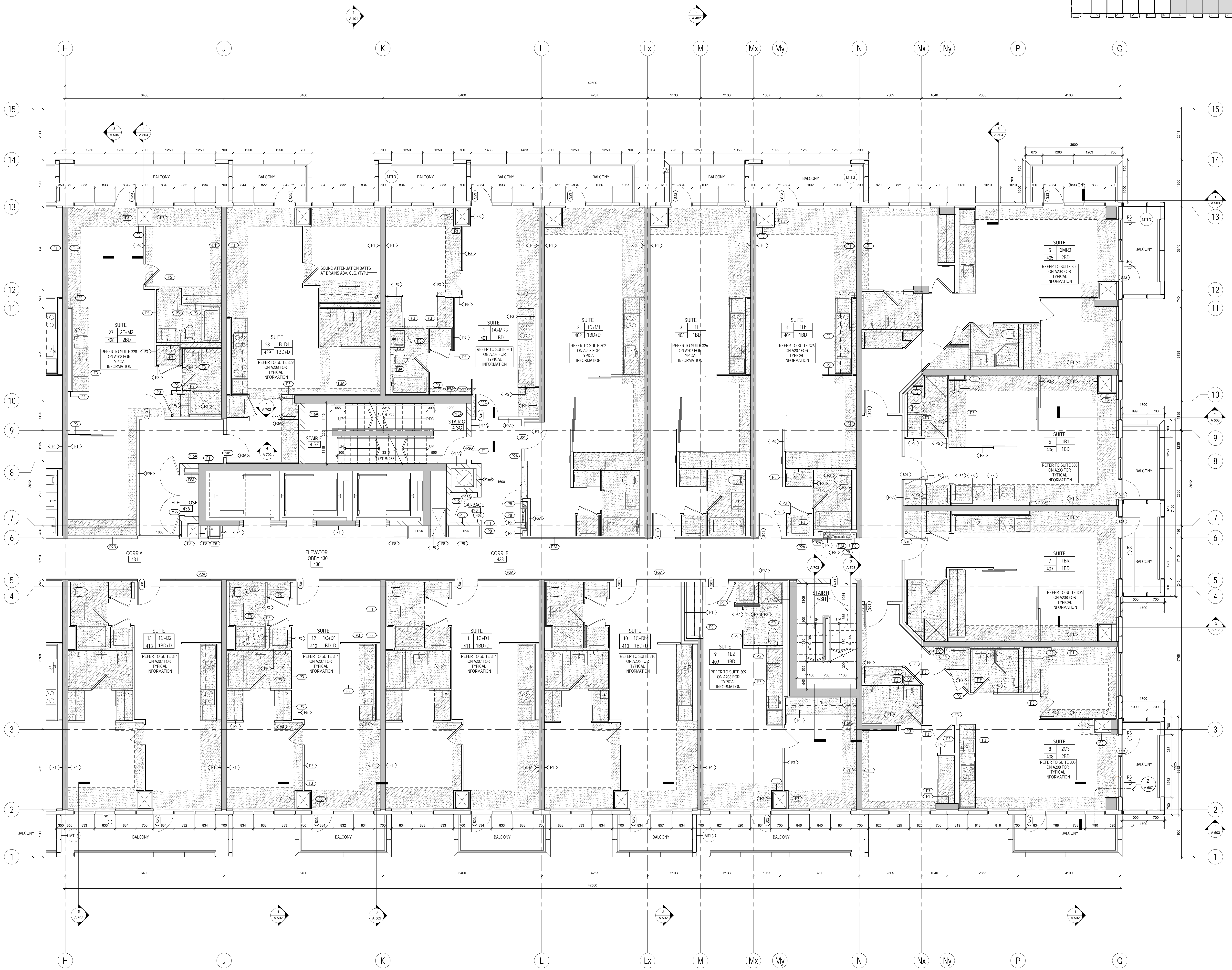
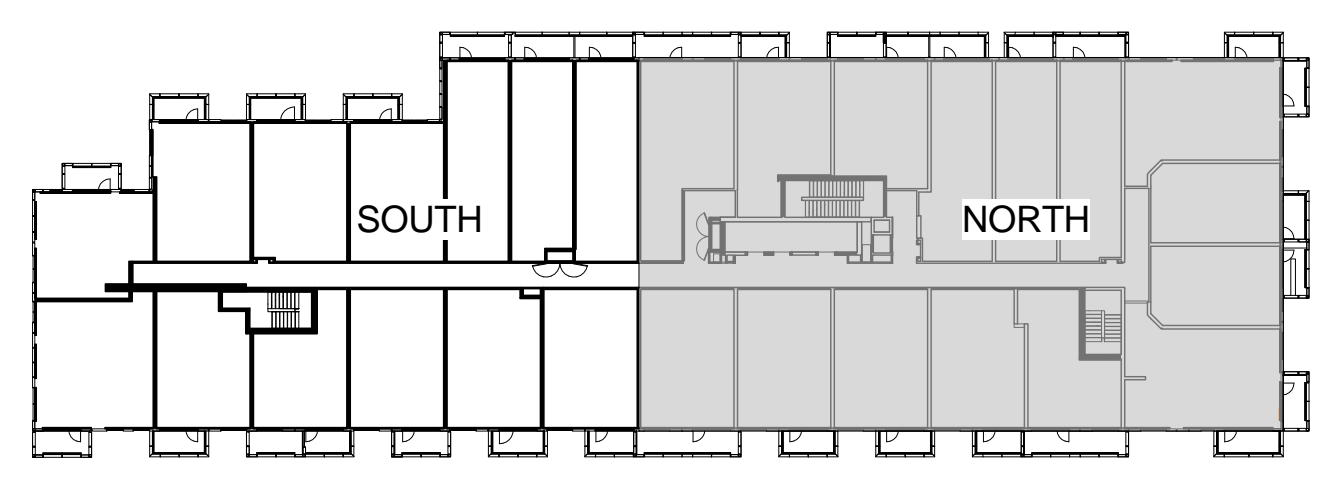
- GYPSUM BOARD BULKHEAD AT 2250mm AIT UNLESS NOTED
- MTL YELLOW METAL PANEL CLADDING
- WTI EXTERIOR WALL ASSEMBLY W/A UNLESS NOTED OTHERWISE

**ACCESSIBLE**

- ♿ DENOTES BARRIER-FREE DESIGNATED RESIDENTIAL SUITE
- ♿ DENOTES ROOF FRAIN AND ROOF DRAINAGE SYMBOLS REFER TO SLAB EDGE PLANS FOR SUITES AND BALCONY DRAINAGE

**REFER TO Dwg. 400 FOR DETAILS OF WINDOW WASHING SYSTEMS**

- AP ANCHOR POINT
- DBW DRAIN BASE
- RSB RECESSED DRAIN BASE
- RSB RECESSED ROOF ANCHOR
- RA ROOF ANCHOR
- RSB ROOF ANCHOR - WALL MOUNTED
- RS WINDOW WASHING RIGGING SLIDE



**METRIC SCALE DRAWING**  
FIRST FLOOR ELEV. +93.60m

No. ISSUED / REVISION FOR DATE:

- 1 Issued for SPA 2013-03-28
- 2 Issued for Coordination 2013-04-11
- 3 Issued for Coordination 2013-04-11
- 4 Revised for SPA 2014-01-10
- 5 Issued for Coordination 2014-02-28
- 6 Issued for Greater Tender 2014-04-07
- 7 Issued for Coordination 2014-04-23
- 8 Issued for 10% Completion 2014-05-21
- 9 Issued for Permit 2014-05-28
- 10 Issued for Coordination 2014-06-23
- 11 Revised for Permit 2014-07-10
- 12 Revised for Permit 2014-08-22
- 13 Issued for Tender 2014-08-28
- 14 Issued for Tender 2014-08-28
- 15 Issued for Flooring Tender 2015-03-10

**SQ ALEXANDRA PARK - BLOCK 11**  
38 CAMERON ST. TORONTO, ONTARIO M5T 2H2

project no. 12-115  
scale: As indicated  
drawn by: TA  
reviewed by: TA  
date: 2014-09-22

**Teepie Architects**  
LEVEL 4 PLAN NORTH

1 LEVEL 4 PLAN NORTH  
A 210 1:50