

**DUAL GENERAL LEGEND**

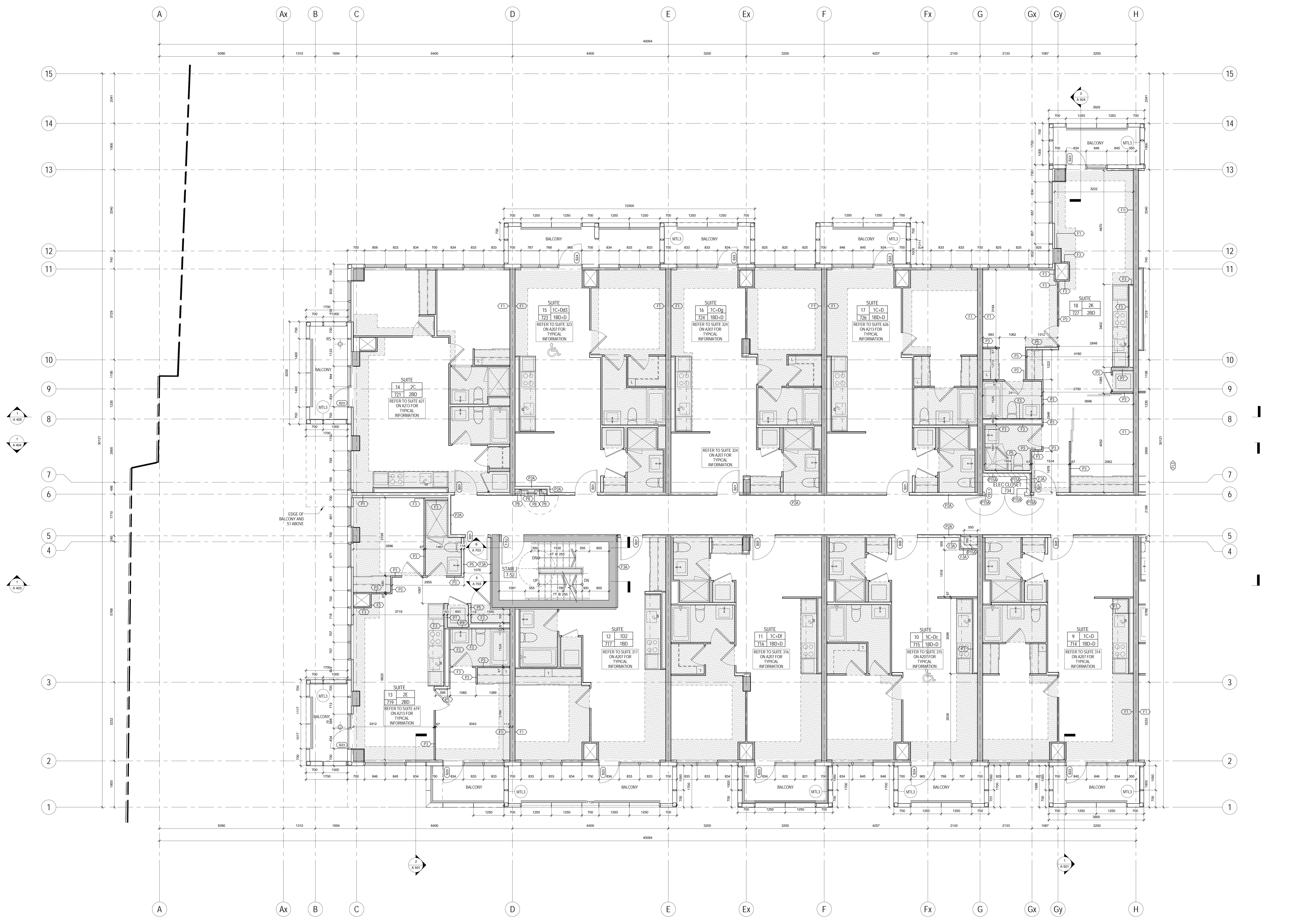
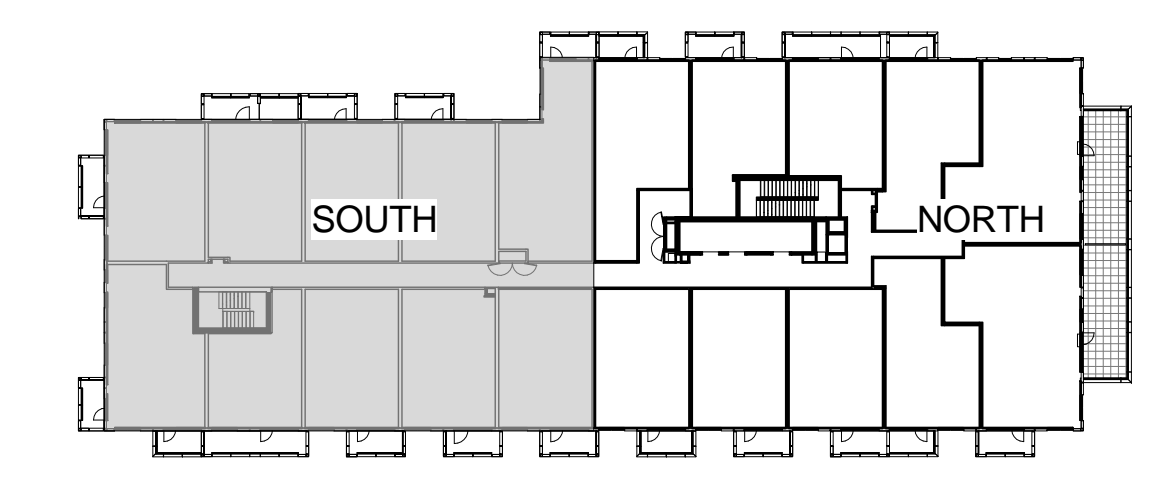
- GYPSUM PARTITION WALL AT 240mm AIR UNLESS NOTED
- MTL YELLOW METAL PANEL CLADDING
- EXTERIOR WALL ASSEMBLY W/A UNLESS NOTED OTHERWISE

DENOTES BARRIER-FREE DESIGNATED RESIDENTIAL SUITE  
 DENOTES ROOF OVER AND ROOF DRAINAGE SYMBOLS REFER TO SLAB EDGE PLANS FOR SUITES AND BALCONY DRAINAGE

ANCHOR POINT  
 DAVIT BASE  
 RECESSED DAVIT BASE

RECESSED ROOF ANCHOR  
 ROOF ANCHOR  
 ROOF ANCHOR - WALL MOUNTED  
 WINDOW WASHING SLIDING

REFER TO OAC, A215 FOR DETAILS OF WINDOW WASHING SYSTEMS



The drawings are the property of Teeple Architects and shall remain the property of Teeple Architects. No part of these drawings shall be reproduced, stored in a retrieval system, or transmitted in any form or by any means, electronic, mechanical, photocopying, recording, or by any information storage and retrieval system, without the prior written consent of Teeple Architects.

The drawings are the property of Teeple Architects and shall remain the property of Teeple Architects. No part of these drawings shall be reproduced, stored in a retrieval system, or transmitted in any form or by any means, electronic, mechanical, photocopying, recording, or by any information storage and retrieval system, without the prior written consent of Teeple Architects.



**METRIC SCALE DRAWING**  
FIRST FLOOR ELEV. +93.60m

No.	ISSUED/REVISION FOR	DATE
1	Issued for SPA	2013-03-28
2	Issued for Coordination	2013-04-11
3	Issued for Coordination	2013-04-19
4	Revised for SPA	2014-01-10
5	Issued for Coordination	2014-02-28
6	Issued for Elevator Tender	2014-04-07
7	Issued for Coordination	2014-05-21
8	Issued for 10% Completion	2014-06-23
9	Issued for Permit	2014-06-23
10	Issued for Coordination	2014-06-23
11	Revised for Permit	2014-07-10
12	Revised for Permit	2014-08-22
13	Issued for Tender	2014-08-28
14	Issued for Tender	2014-08-28
15	Issued for Flooring Tender	2015-03-10

**SQ ALEXANDRA PARK - BLOCK 11**  
38 CAMERON ST., TORONTO, ONTARIO M5T 2H2

project no. 12-115  
 scale: As indicated  
 drawn by: TAU  
 reviewed by: JH  
 date: 2014-09-22

**Teeple Architects**  
 1200 BAY ST. TORONTO, ONTARIO M5T 1A2  
 TEL: 416-593-8888  
 WWW.TEEPLEARCHITECTS.COM