

DUAL ROOFING SYSTEM

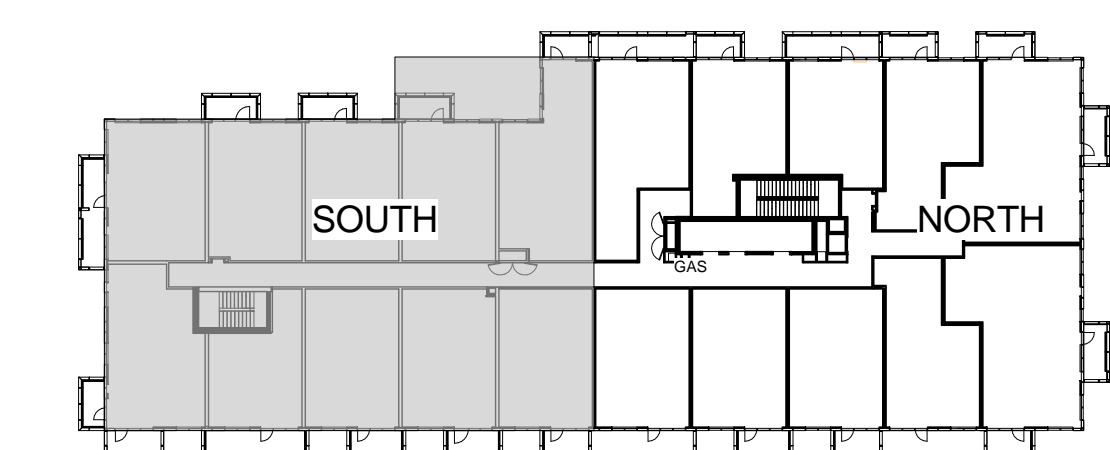
- GYPSUM BOARD BULKHEAD AT 2750mm AFF (UNLESS NOTED)
- MT1 YELLOW METAL PANEL CLADDING
- WT1 EXTERIOR WALL ASSEMBLY (W/A UNLESS NOTED OTHERWISE)

DEMOTES BARRED-FREE DESIGNATED RESIDENTIAL SUITE

DEMOTES ROOF DRAIN AND ROOF DRAINAGE SYSTEM. REFER ALSO TO SLAB EDGE PLANS FOR SUITES AND BALCONY DRAINAGE

REFER TO Dwg. 4020 FOR DETAILS OF WINDOW WASHING SYSTEMS

- AP ANCHOR POINT
- DBW DRAIN BASE
- RECESSED DRAIN BASE
- RECESSED ROOF ANCHOR
- RA ROOF ANCHOR
- ROOF ANCHOR - WALL MOUNTED
- WINDOW WASHING RIGGING SLIDE



12-115
TAU
2014-09-22



METRIC SCALE DRAWING
FIRST FLOOR ELEV. +93.60m

No.	ISSUED/REVISION FOR	DATE
1	Issued for SPA	2013-03-28
2	Issued for Coordination	2013-04-11
3	Issued for Coordination	2013-04-14
4	Revised by SPA	2014-01-10
5	Issued for Coordination	2014-02-20
6	Issued for Elevator Tender	2014-04-07
7	Issued for Coordination	2014-04-21
8	Issued for 10% Completion	2014-04-21
9	Issued for Permit	2014-05-20
10	Issued for Coordination	2014-06-23
11	Revised by Permit	2014-07-10
12	Revised by Permit	2014-08-22
13	Issued for Tender	2014-08-28
14	Issued for Tender	2014-08-28
15	Issued for Flooring Tender	2015-03-10

SQ ALEXANDRA PARK - BLOCK 11
38 CAMERON ST. TORONTO, ONTARIO M5T 2H2

project no: 12-115
scale: As indicated
drawn by: TAU
reviewed by: TA
date: 2014-09-22

Teepie Architects
LEVEL 8 PLAN SOUTH