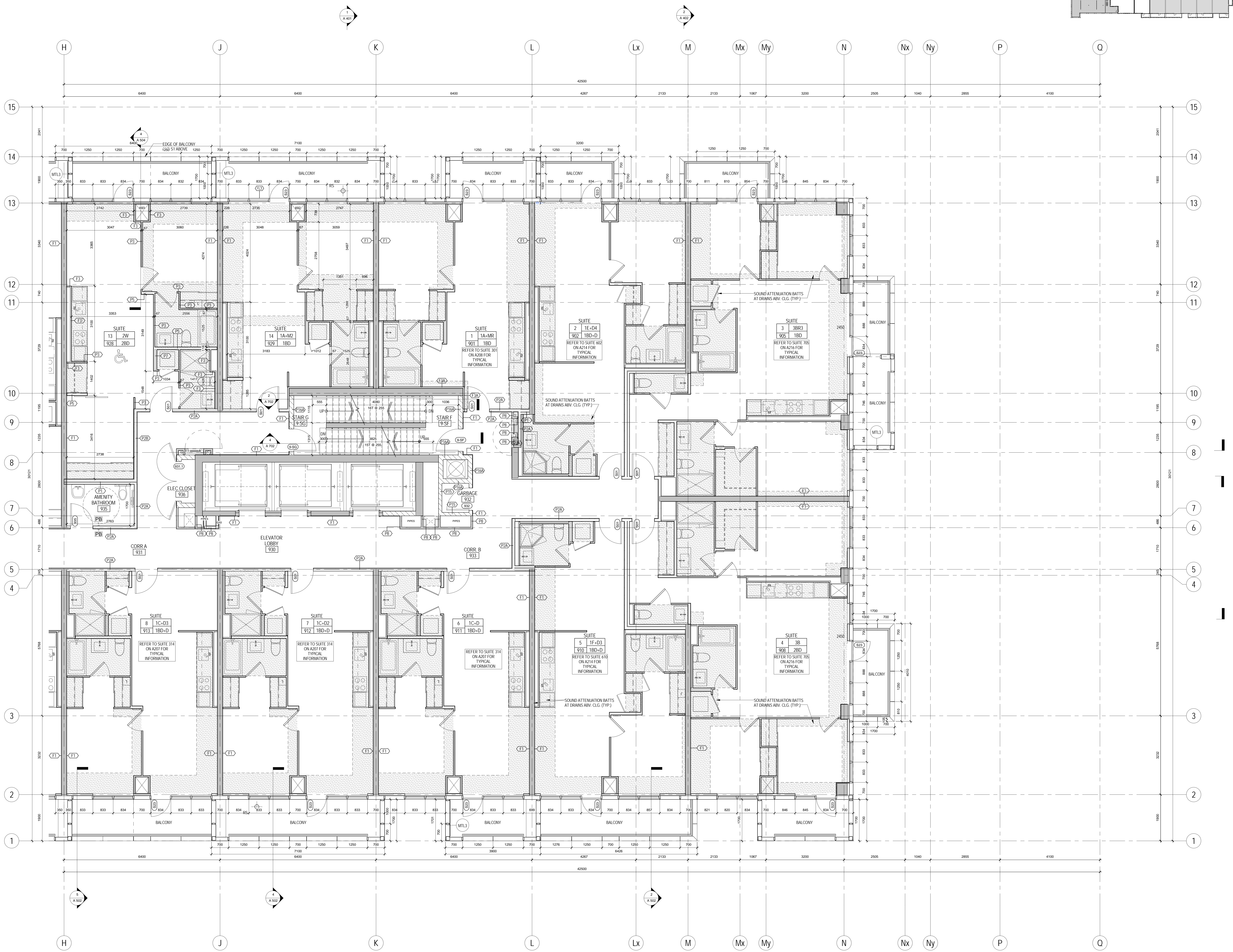
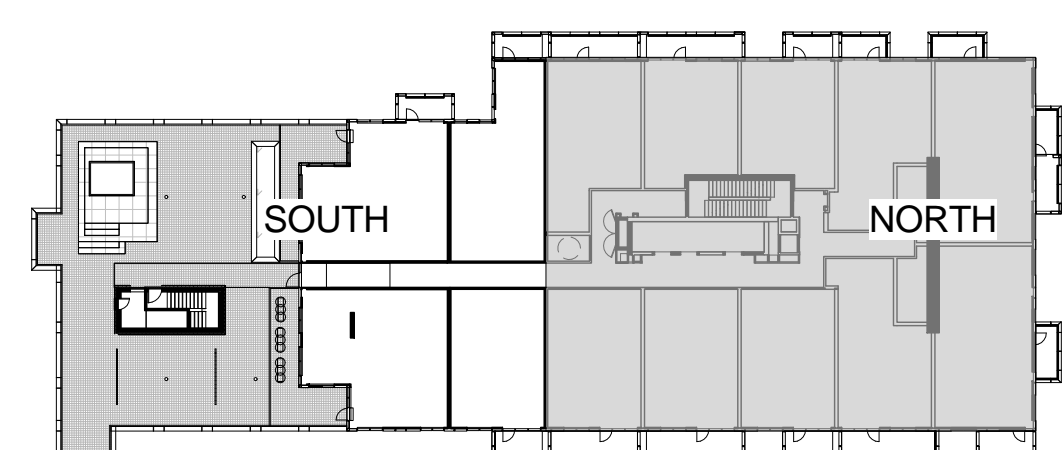


**GENERAL NOTES**

- DUAL CHANNEL SYSTEM
- DENOTES BARRED-FREE DESIGNATED RESIDENTIAL SUITE
- DENOTES ROOF TRUSS AND ROOF FRAMING SYSTEM. REFER TO SLAB EDGE FLANGE FOR SUITES AND BALCONY ELEVATIONS
- REFER TO DMC 4020 FOR DETAILS OF WINDOW WASHING SYSTEMS
- RECESSED ROOF ANCHOR
- ROOF ANCHOR
- ROOF ANCHOR - WALL MOUNTED
- WINDOW WASHING RIGGING SLEEVES
- DENOTES METAL PANEL CLADDING
- EXTERIOR WALL ASSEMBLY W/A UNLESS NOTED OTHERWISE
- ANCHOR POINT
- DAWT BASE
- RECESSED DAWT BASE



**METRIC SCALE DRAWING**  
FIRST FLOOR ELEV. +93.60m

No.	ISSUED/REVISION FOR	DATE
1	Issued for SPA	2013-10-24
2	Issued for Coordination	2013-11-11
3	Issued for Coordination	2013-11-17
4	Revised for SPA	2014-01-10
5	Issued for Coordination	2014-02-28
6	Issued for Tender Tender	2014-04-07
7	Issued for Coordination	2014-04-07
8	Issued for SPA Completion	2014-06-23
9	Issued for Permit	2014-06-23
10	Issued for Coordination	2014-06-23
11	Revised for Permit	2014-07-10
12	Revised for Permit	2014-08-22
13	Issued for Tender	2014-08-28
14	Issued for Tender	2014-08-28
15	Issued for Flooring Tender	2015-03-10

**SQ ALEXANDRA PARK - BLOCK 11**  
38 CAMERON ST. TORONTO, ONTARIO M5T 2H2

project no: 12-115  
scale: As indicated  
drawn by: TAU  
reviewed by: JH  
date: 2014-09-22

**Teepie Architects**  
LEVEL 9 PLAN NORTH

1 LEVEL 9 PLAN NORTH  
A 220 1:50

A 220