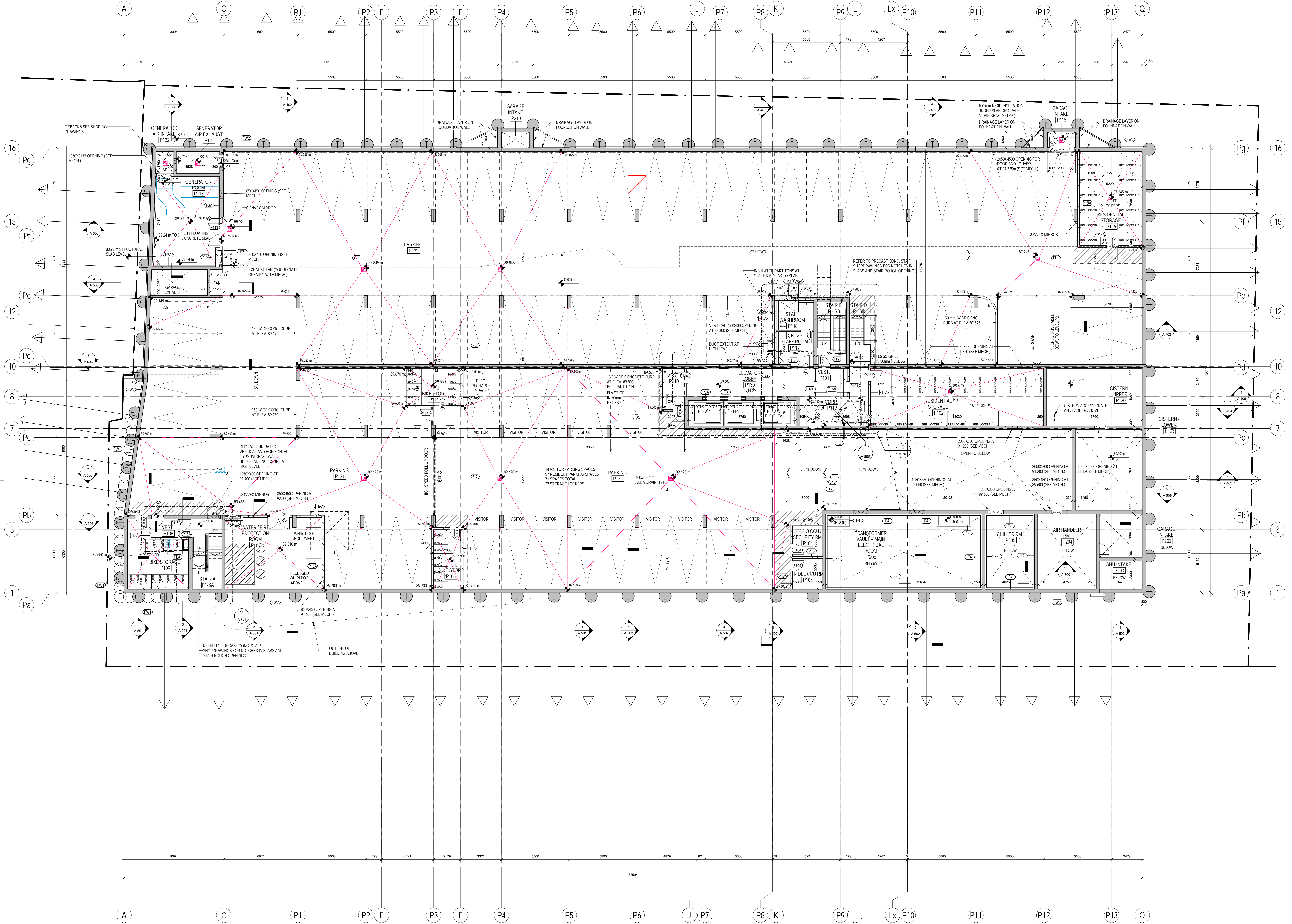


- CEILING NOTES:**
1. TYPICAL GYPSUM BULKHEAD W/O ACOUSTIC INSULATION
 2. CEILING TYPE C1 W/ ACOUSTIC INSULATION AT BATHROOMS AND LAUNDRY CLOSETS TYP.
 3. KITCHEN BULKHEAD @ 250mm AFF TYP. U.N.O. @ 2200mm AFF ON LEVELS 3 AND 4
 4. ALL PLUMBING PENETRATING SLAB ABOVE TO BE WRAPPED W/ 30mm ACOUSTIC BATT EXCEPT IN BATHROOM CEILINGS.
 5. PARTITIONS AROUND C1 CEILING TO BE FILLED W/ ACOUSTIC BATT ABOVE THE CEILING. EXTEND GYPSUM TO US SLAB ABOVE ON ONE SIDE OF PARTITION WALL.
 6. WHERE PLUMBING FROM ABOVE IS LOCATED OVER A ROOM BELOW OTHER THAN A BATHROOM, PROVIDE AN INSULATED C1 CEILING, PLUS WRAP THE PLUMBING IN ACOUSTIC BATT.



METRIC SCALE DRAWING
FIRST FLOOR ELEV. +93.60m

No. ISSUED / REVISIONS FOR DATE:

1	Issued for SPA	2013-03-26
2	Issued for Coordination	2013-04-11
3	Revised for SPA	2014-01-19
4	Issued for Coordination	2014-02-28
5	Issued for Tender	2014-04-07
6	Issued for Tender	2014-04-07
7	Issued for Coordination	2014-04-23
8	Issued for 10% Completion	2014-05-21
9	Issued for Permit	2014-05-28
10	Issued for Coordination	2014-06-23
11	Revised for Permit	2014-07-10
12	Revised for Permit	2014-08-22
13	Issued for Tender	2014-08-28
14	Issued for Tender	2014-08-28
15	Issued for 10% Completion	2015-03-09
16	Issued for Tender	2015-03-09
17	Issued for 45% CD	2015-03-23
18	Issued for Coordination	2015-04-28
19	Issued for 45% CD	2015-04-28
20	Issued for Tender	2015-05-05
21	Issued for 45% CD	2015-05-05
22	Issued for 45% CD	2015-05-11
23	Issued for 45% CD	2015-05-11
24	Issued for Drywall Tender	2015-08-19

SQ ALEXANDRA PARK - BLOCK 11
38 CAMERON ST., TORONTO, ONTARIO M5T 2H2

project no. 12-115
scale: As indicated
drawn by: TA
reviewed by: SA
date: 2014-09-22

Teepie Architects
LEVEL P1 PLAN

1 PARKING LEVEL P1
A.202 1:100

A 202