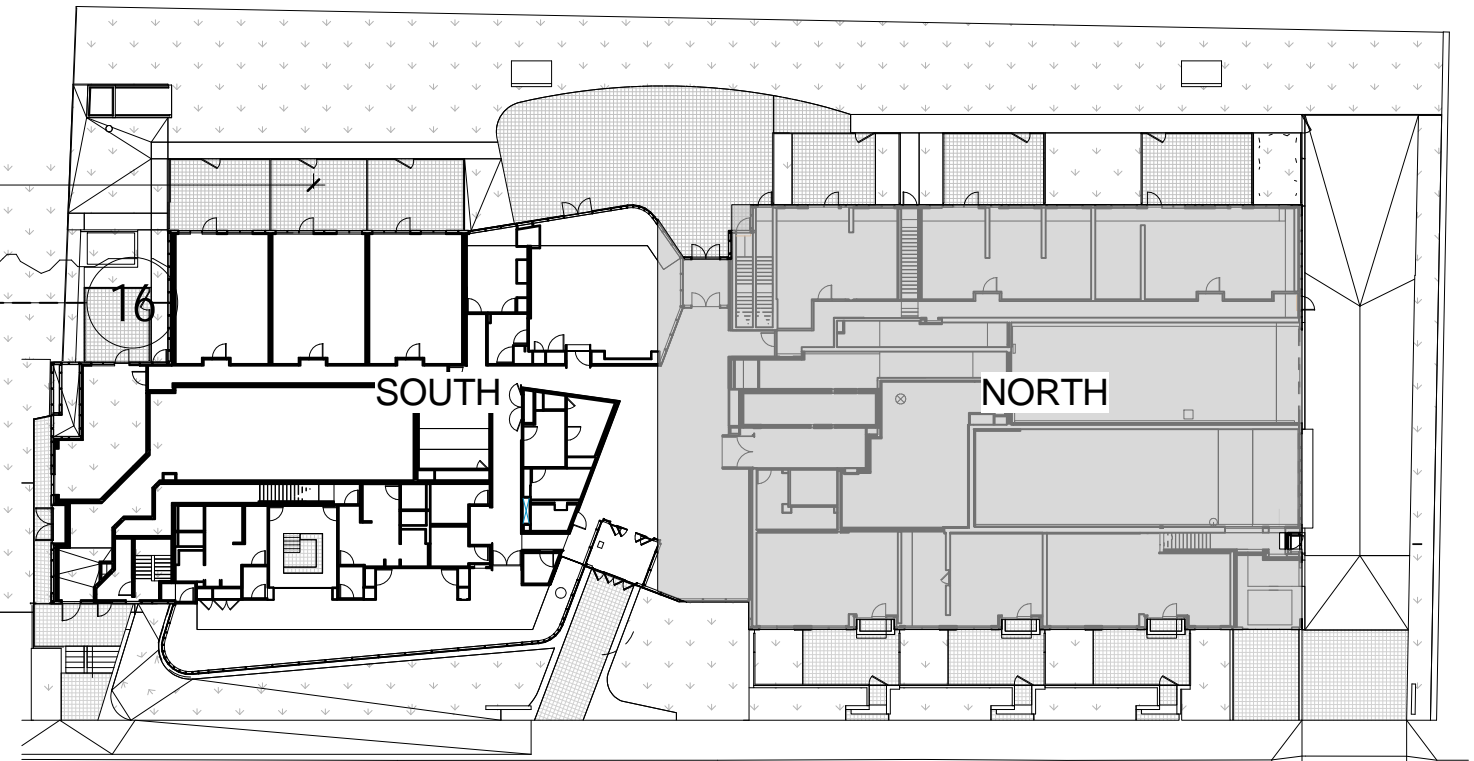


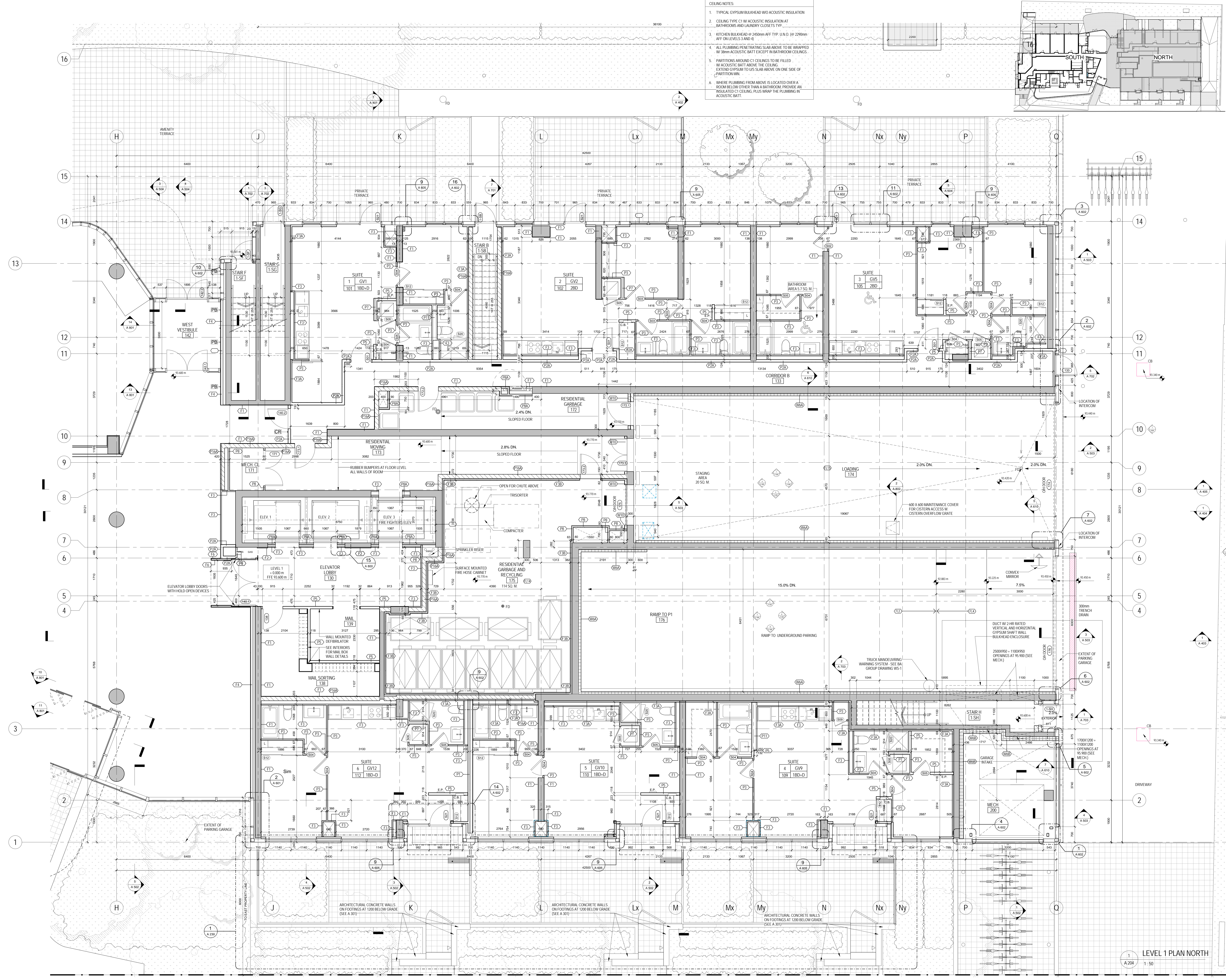
- CEILING NOTES:**
1. TYPICAL GYPSUM BULKHEAD W/ ACUSTIC INSULATION
 2. CEILING TYPE C1 W/ ACUSTIC INSULATION AT BATHROOMS AND LAUNDRY CLOSETS TYP.
 3. KITCHEN BULKHEAD @ 2400mm AFF TYP. U.N.O. @ 2200mm AFF ON LEVELS 3 AND 4
 4. ALL PLUMBING PENETRATING SLAB ABOVE TO BE WRAPPED W/ 50mm ACUSTIC BATT EXCEPT IN BATHROOM CEILINGS.
 5. PARTITIONS AROUND C1 CEILINGS TO BE FILLED W/ ACUSTIC BATT ABOVE THE CEILING. EXTEND GYPSUM TO US SLAB ABOVE ON ONE SIDE OF PARTITION MIN.
 6. WHERE PLUMBING FROM ABOVE IS LOCATED OVER A ROOM BELOW OTHER THAN A BATHROOM PROVIDE AN INSULATED C1 CEILING. PLUS WRAP THE PLUMBING IN ACUSTIC BATT.



METRIC SCALE DRAWING
FIRST FLOOR ELEV. +93.60m

No. ISSUED/REVISIONS FOR DATE:

1	Issued for SPA	2013-03-28
2	Issued for Coordination	2013-04-11
3	Issued for Coordination	2013-04-19
4	Revised for SPA	2014-01-10
5	Issued for Coordination	2014-02-28
6	Issued for Elevator Tender	2014-04-07
7	Issued for Coordination	2014-05-07
8	Issued for 10% Completion	2014-05-21
9	Issued for Permit	2014-05-28
10	Issued for Coordination	2014-06-23
11	Revised for Permit	2014-07-10
12	Revised for Permit	2014-08-22
13	Issued for Tender	2014-08-28
14	Issued for Tender	2014-09-22
15	Issued for 40% Bid	2015-03-05
16	Issued for Tender Tender	2015-03-27
17	Issued for Coordination	2015-04-29
18	Issued for 40% Bid	2015-05-04
19	Issued for Tender	2015-05-05
20	Issued for 40% Bid	2015-06-11
21	Issued for 40% Bid	2015-07-13
22	Issued for 40% Bid	2015-07-24
23	Issued for Final Tender	2015-08-18



SQ ALEXANDRA PARK - BLOCK 11
38 CAMERON ST. TORONTO, ONTARIO M5T 2H2

project no. 12-115
scale: As indicated
drawn by: TA
reviewed by: HA
date: 2014-09-22

Teepie Architects
LEVEL 1 PLAN NORTH