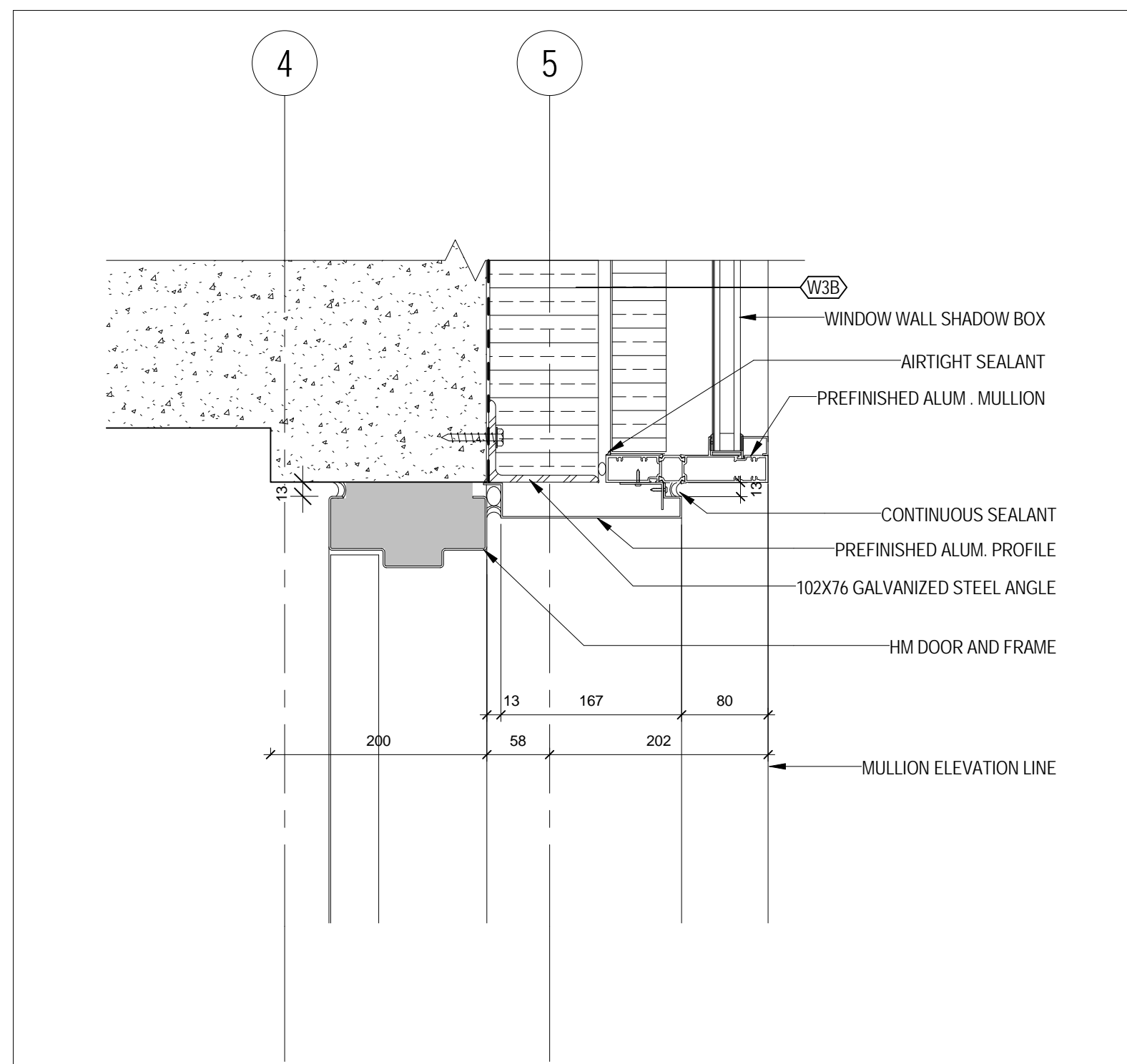
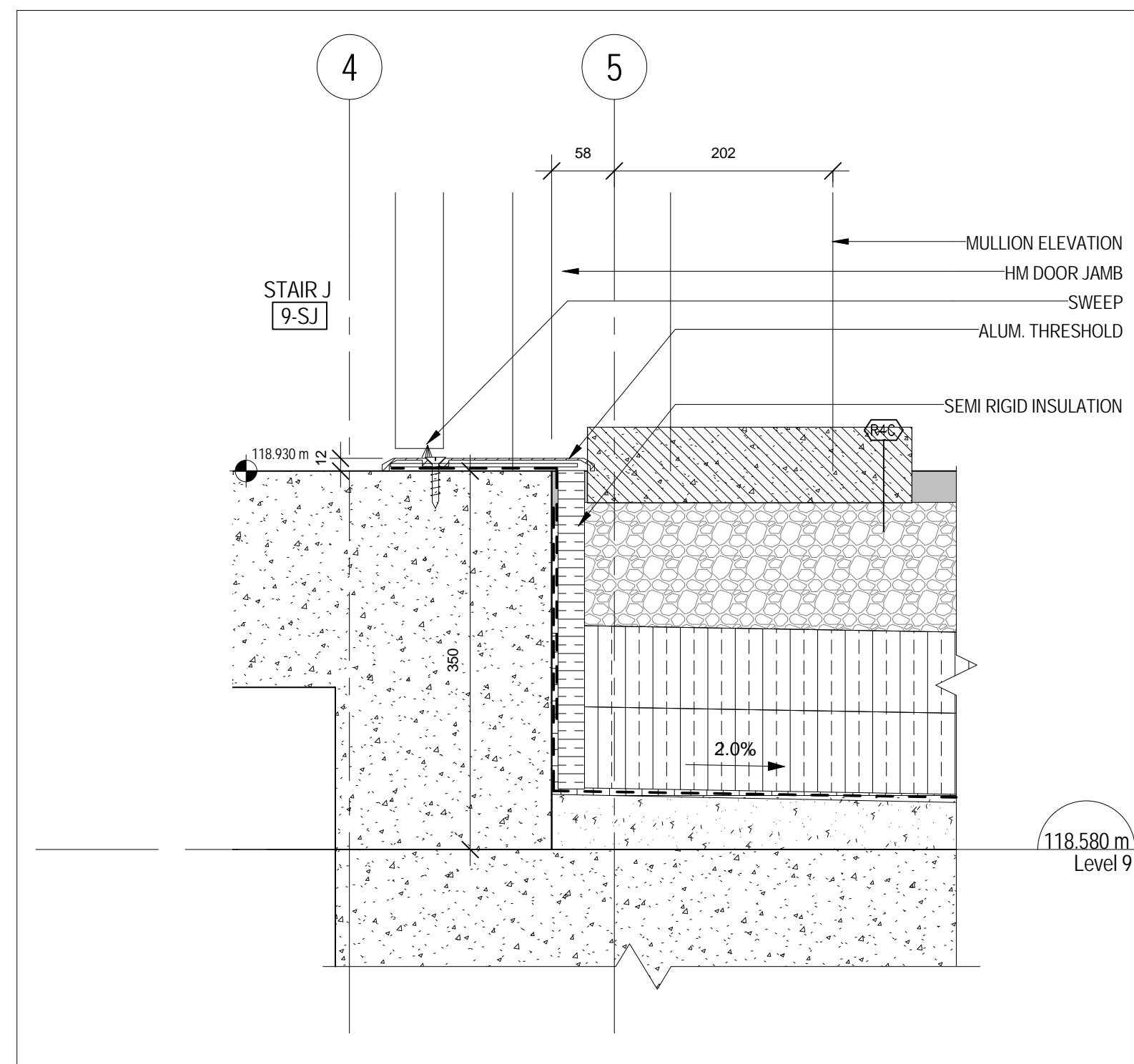


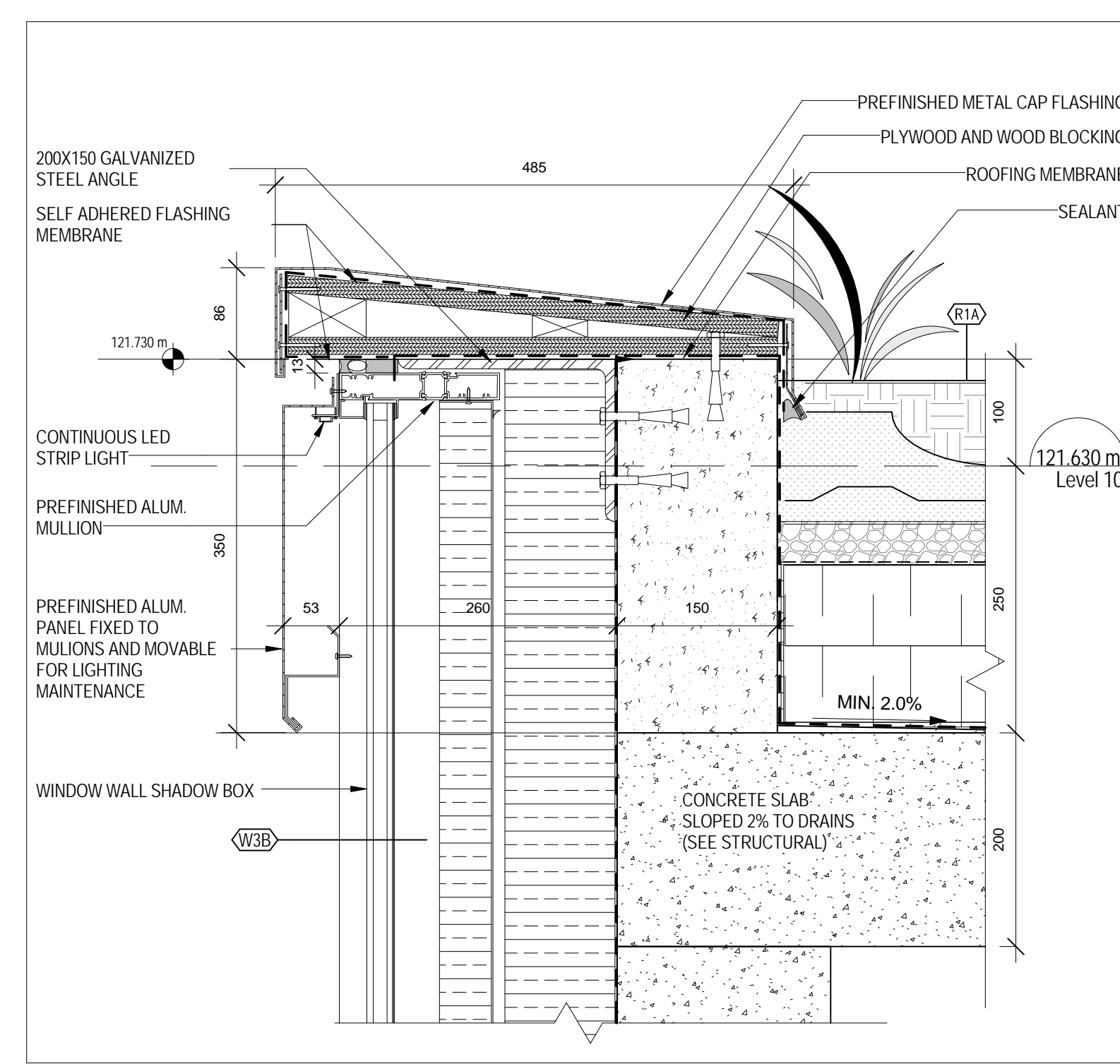
14 PLAN DETAIL - WINDOW WALL AND EIFS INTERSECTION AT COOLING TOWER  
1/1A 225 1:5



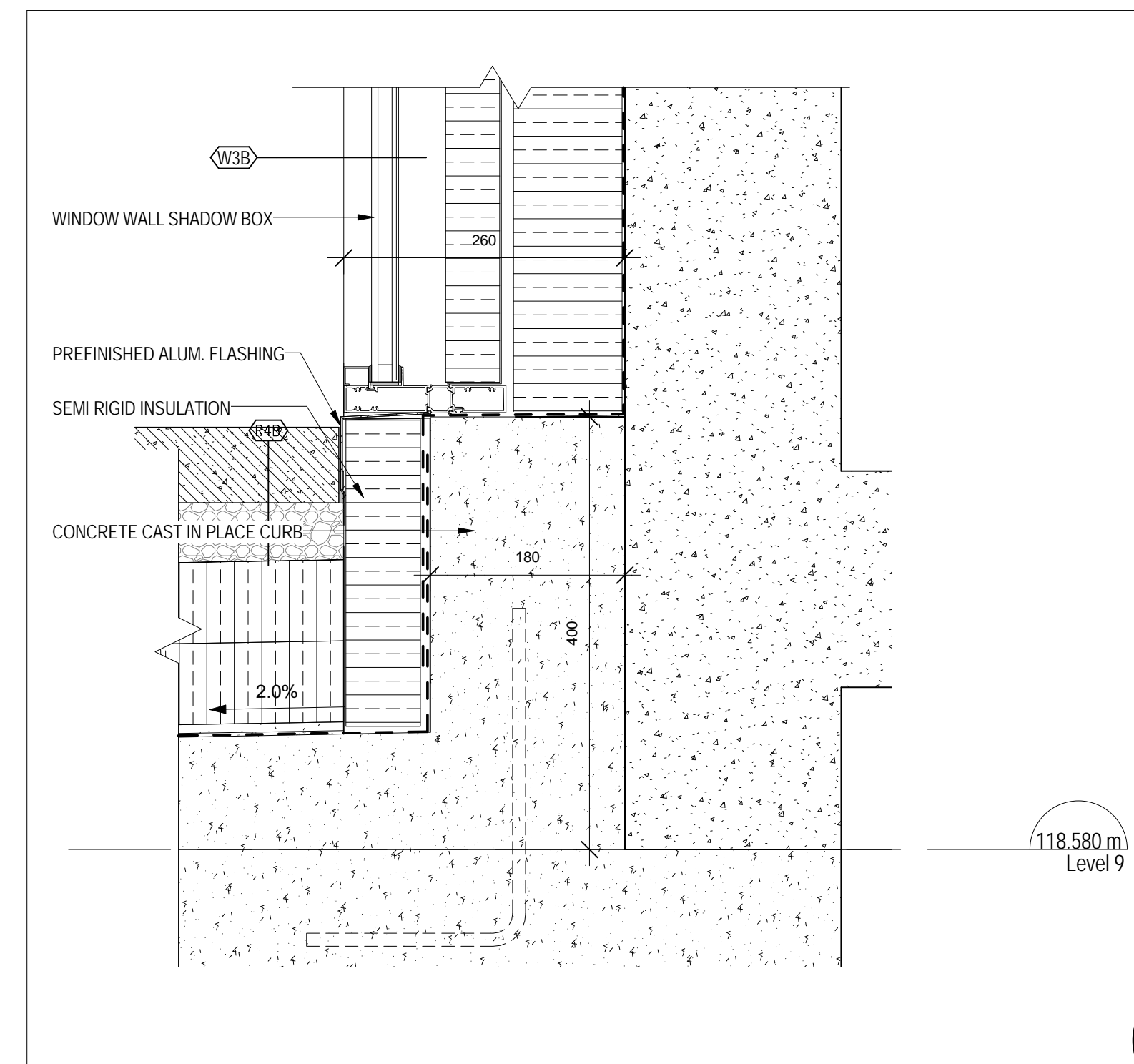
13 STAIR J - LEVEL 9 - DETAIL SECTION AT DOOR LINTEL  
2/1A 505 1:5



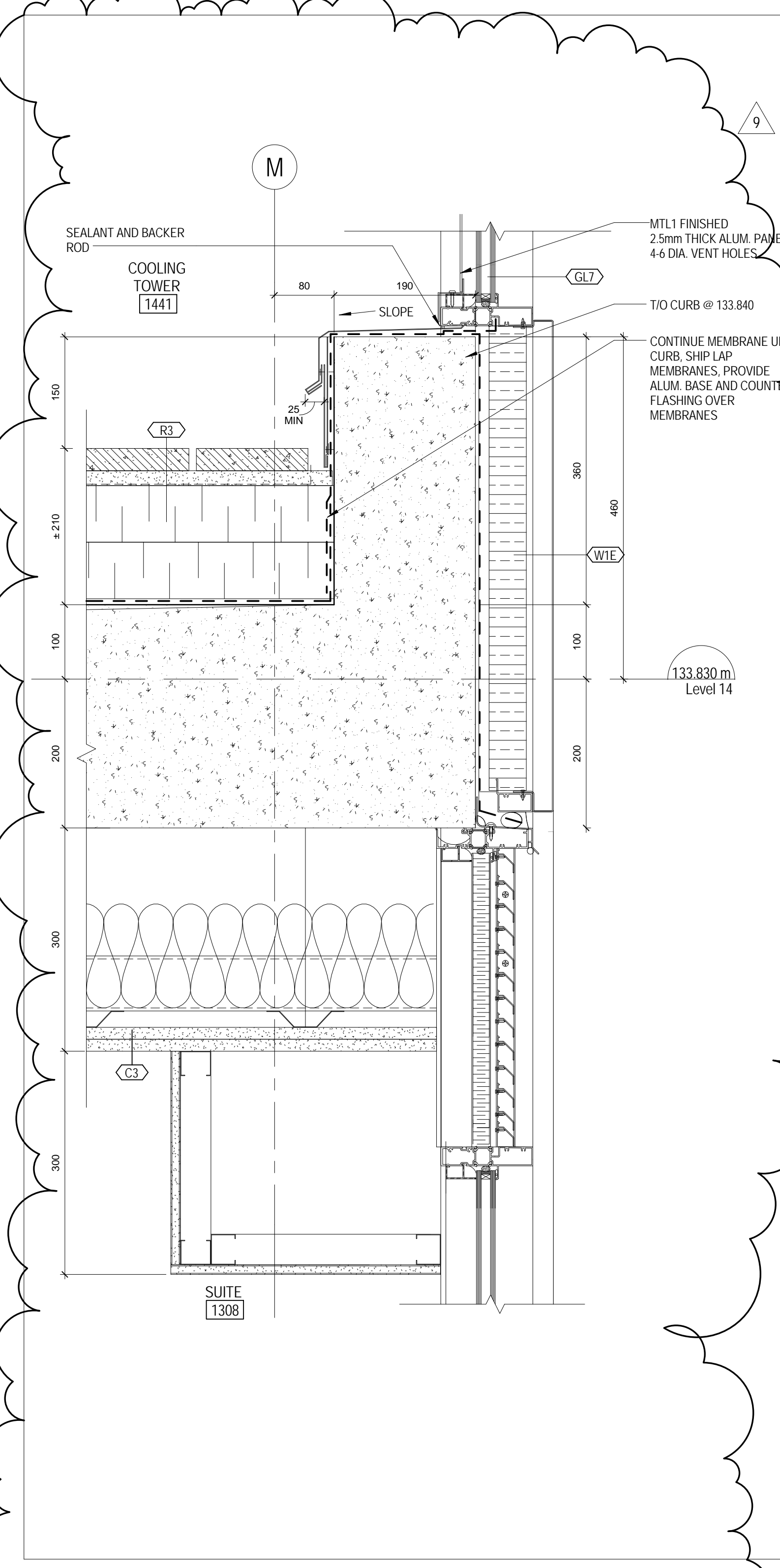
12 STAIR J - LEVEL 9 DETAIL SECTION AT DOOR THRESHOLD  
2/1A 505 1:5



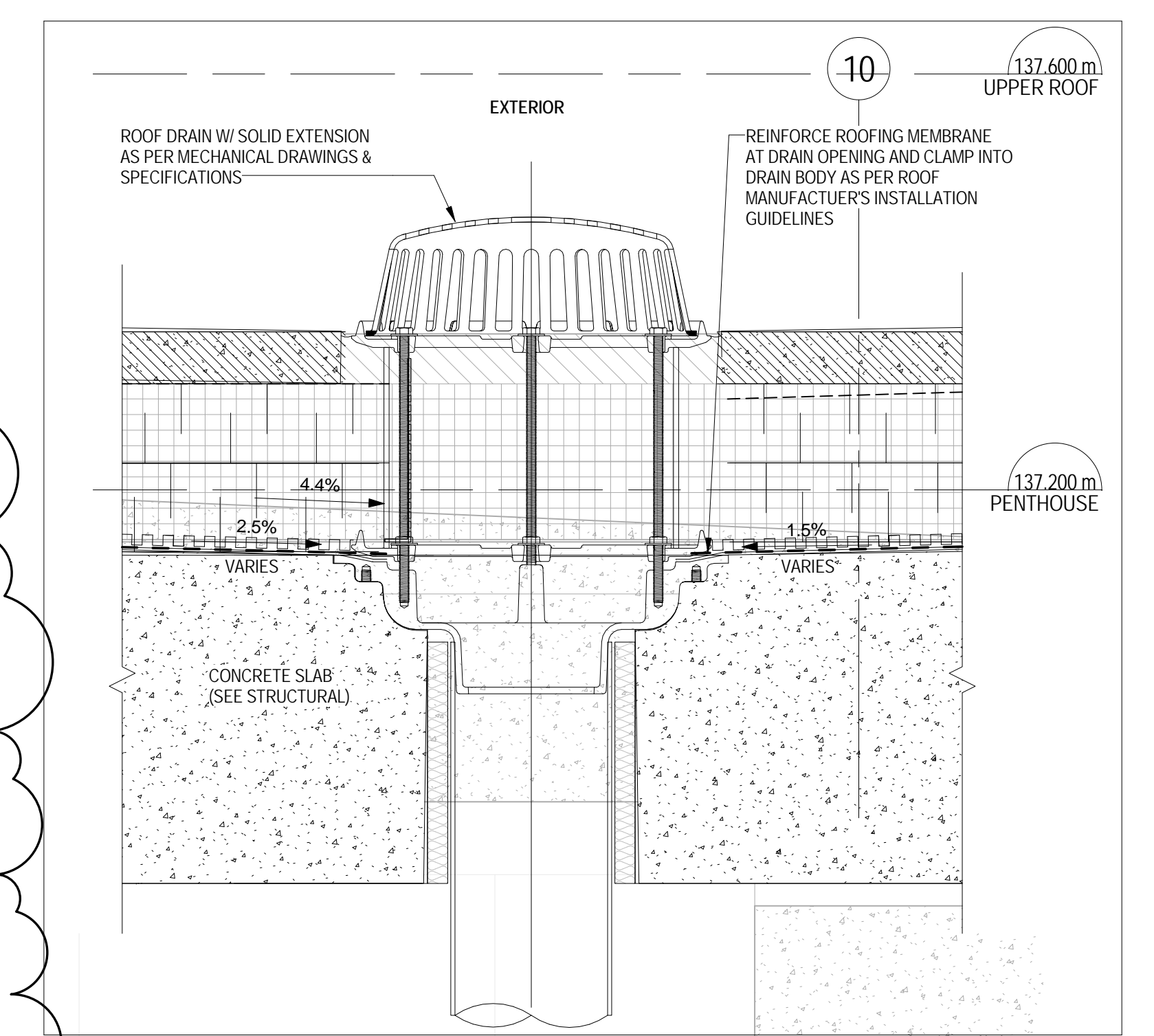
10 STAIR J - PARAPET DETAIL  
1/1A 506 1:5



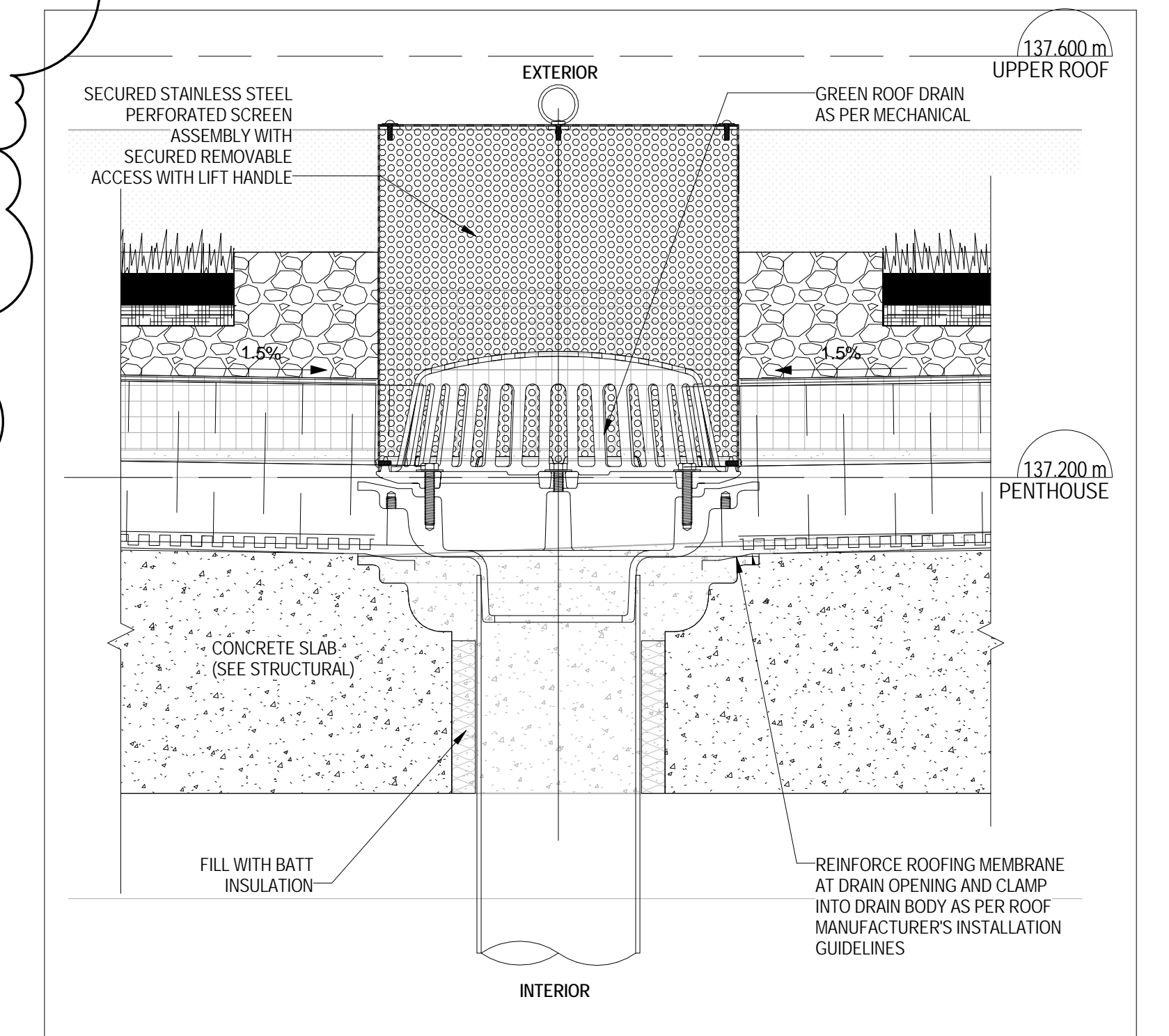
9 STAIR J - LEVEL 9 - AT ROOF  
2/1A 505 1:5



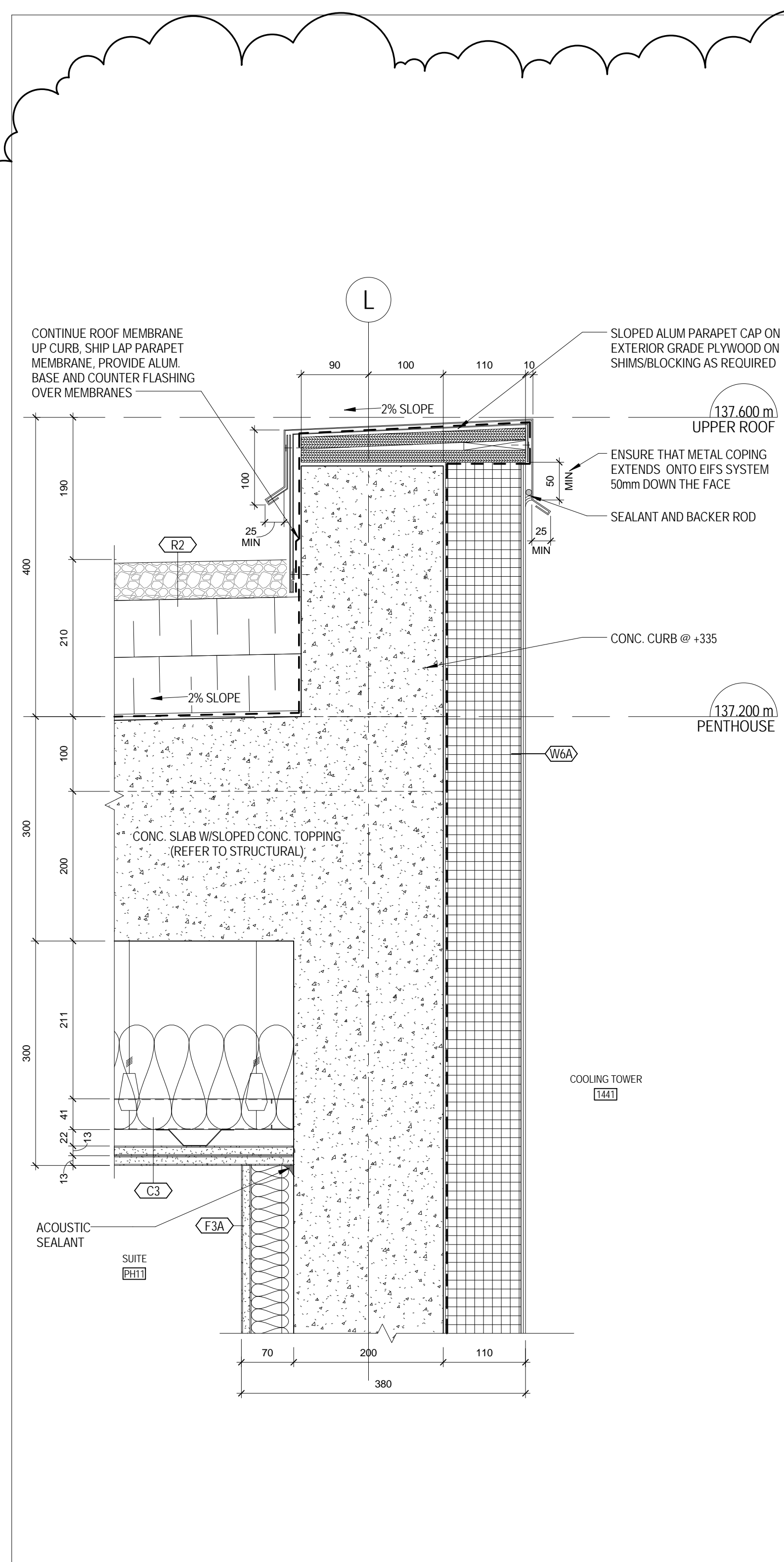
7 SECTION - NORTH WALL AT COOLING TOWER  
1/1A 507 1:5



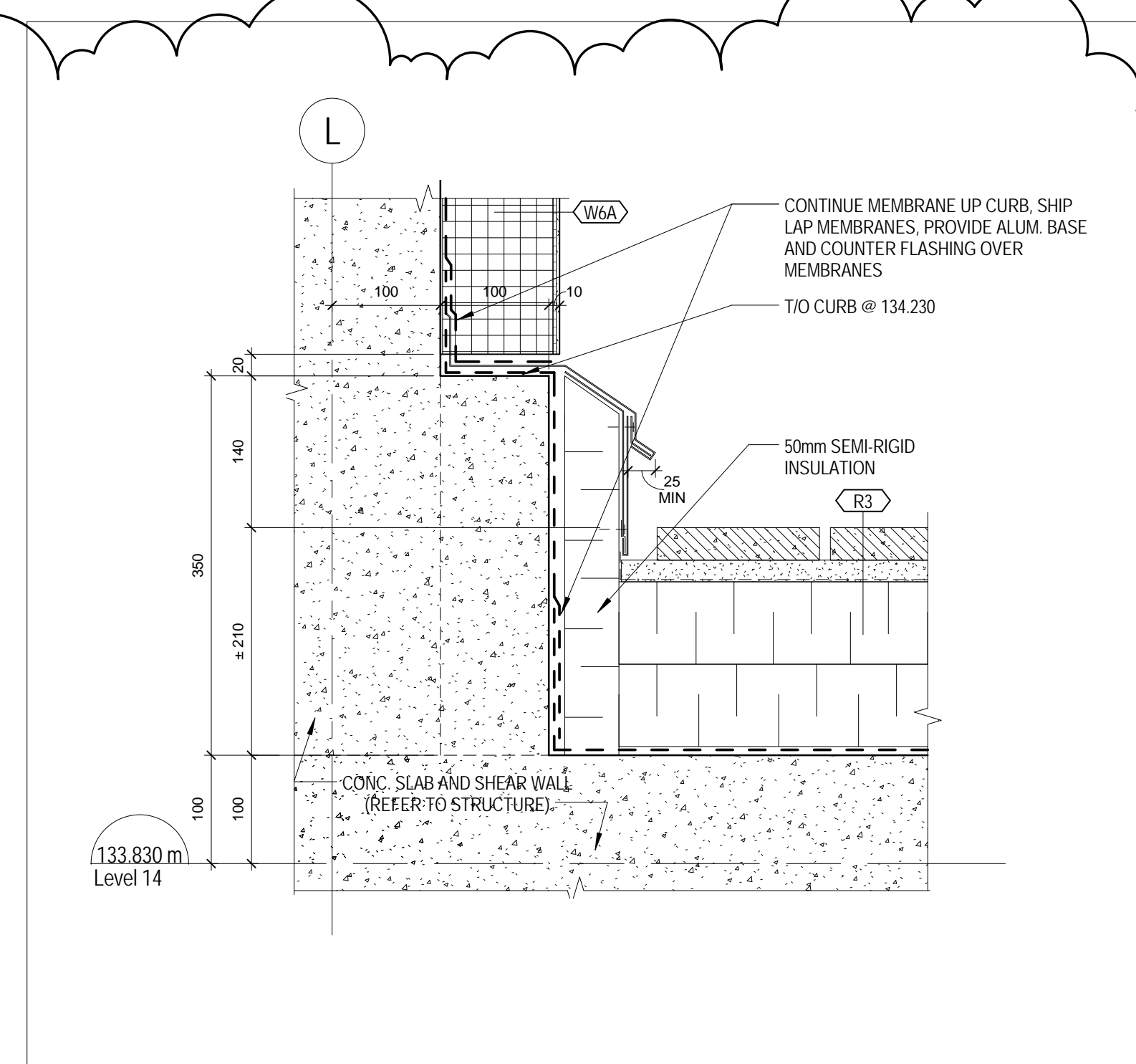
4 ROOF DRAIN R3  
2/1A 507 1:5



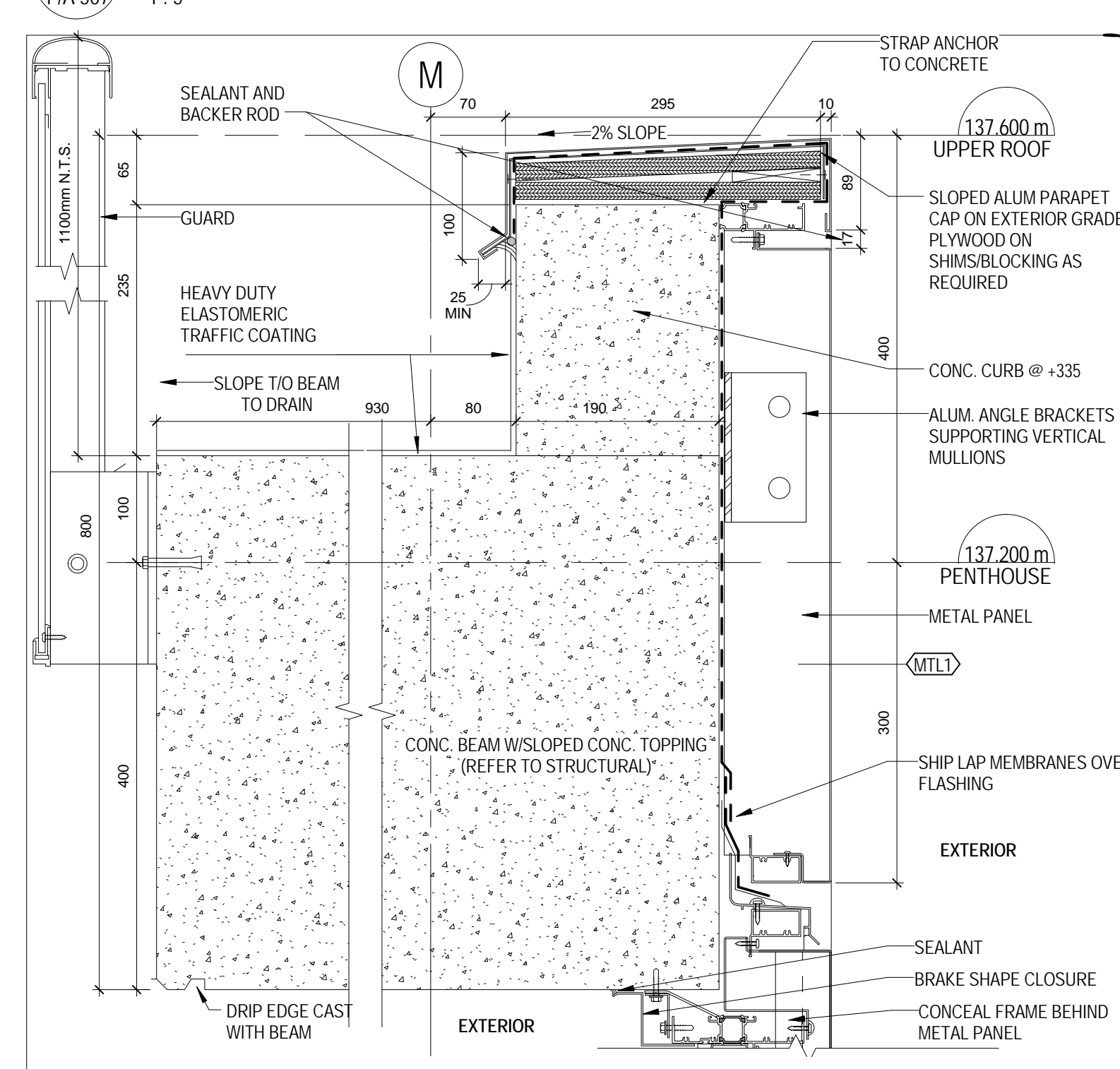
3 ROOF DRAIN R1B  
2/1A 507 1:5



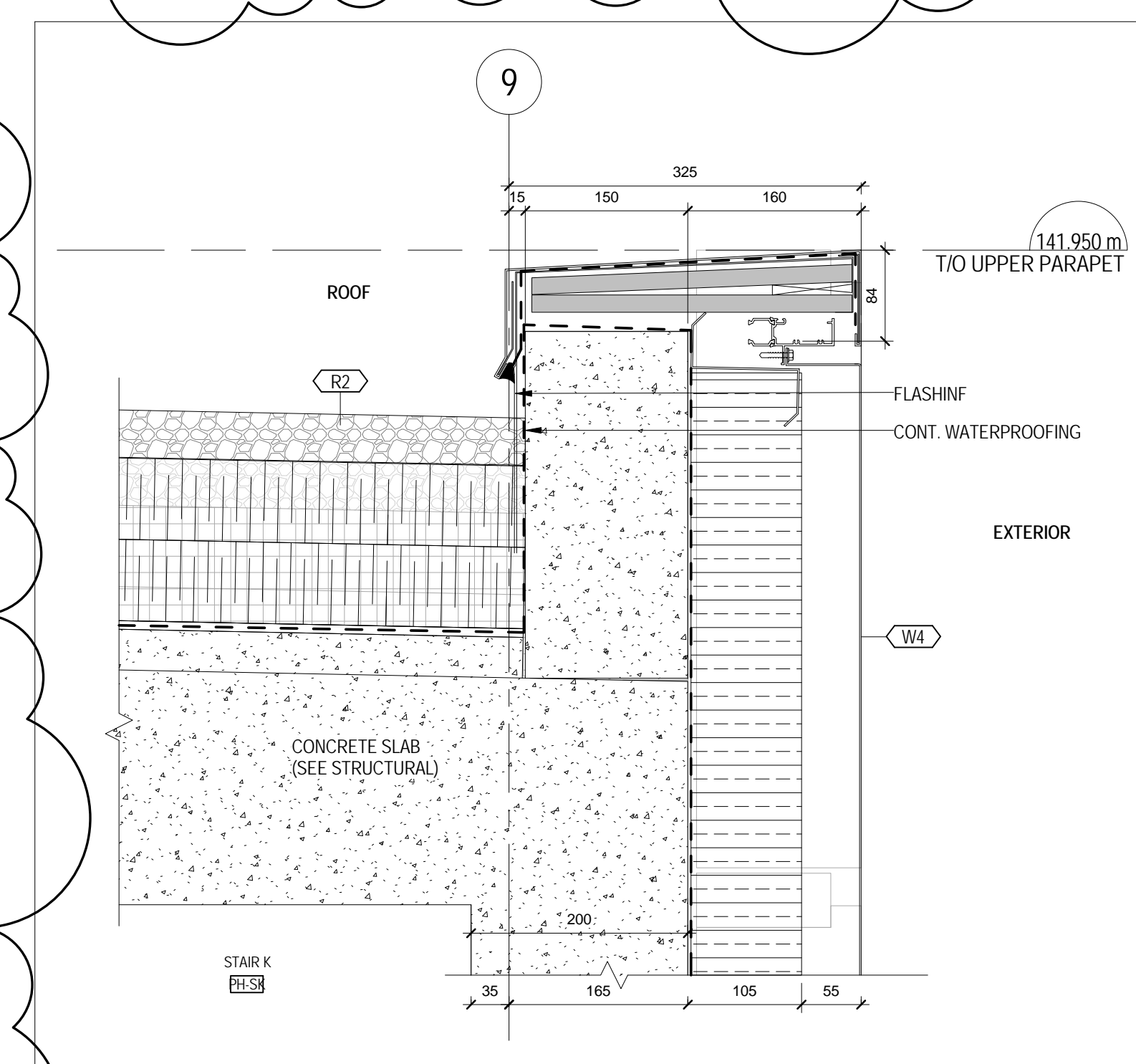
11 ROOF AT COOLING TOWER  
1/1A 507 1:5



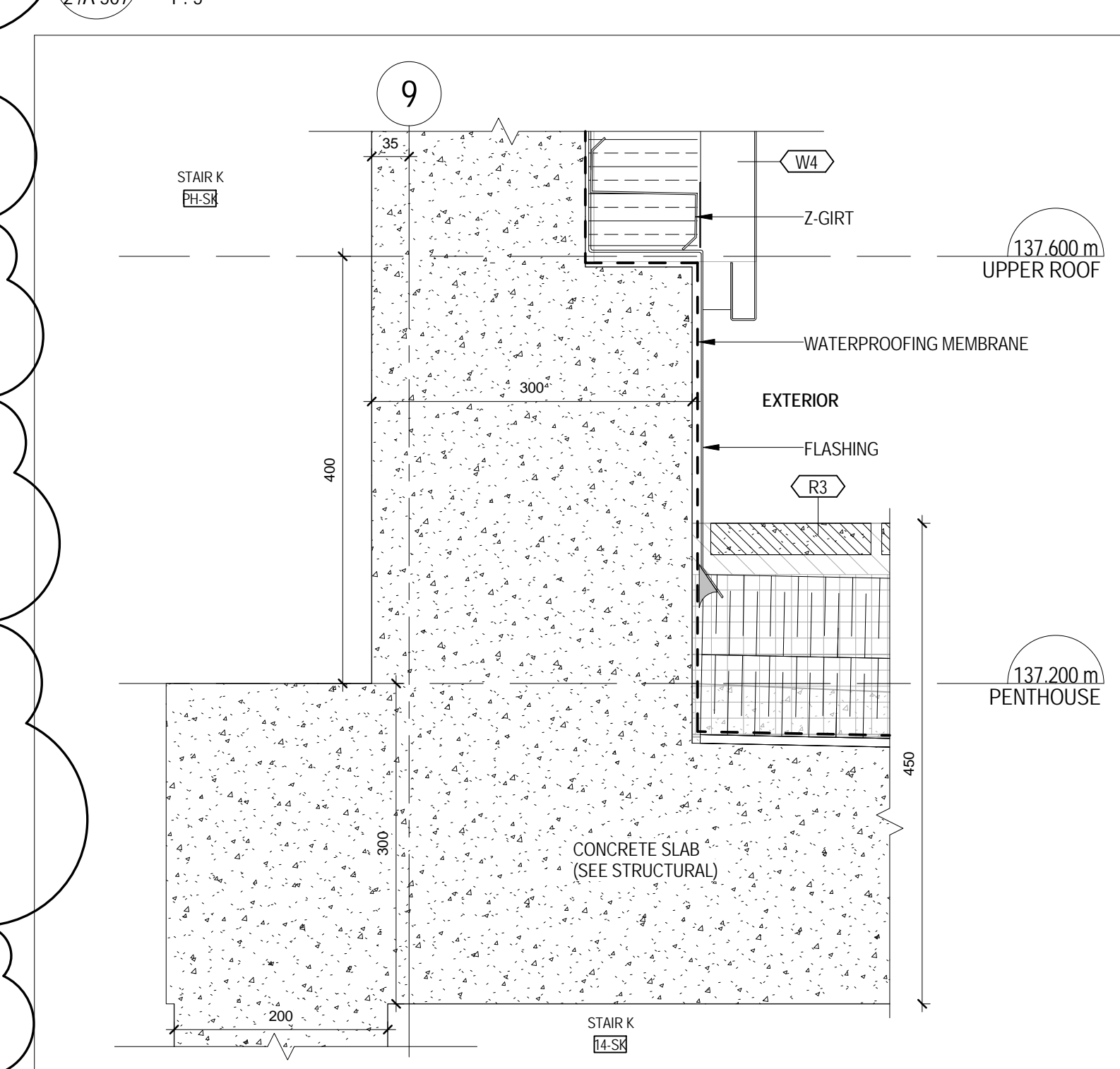
15 SECTION - CURB DETAIL AT COOLING TOWER  
1/1A 507 1:5



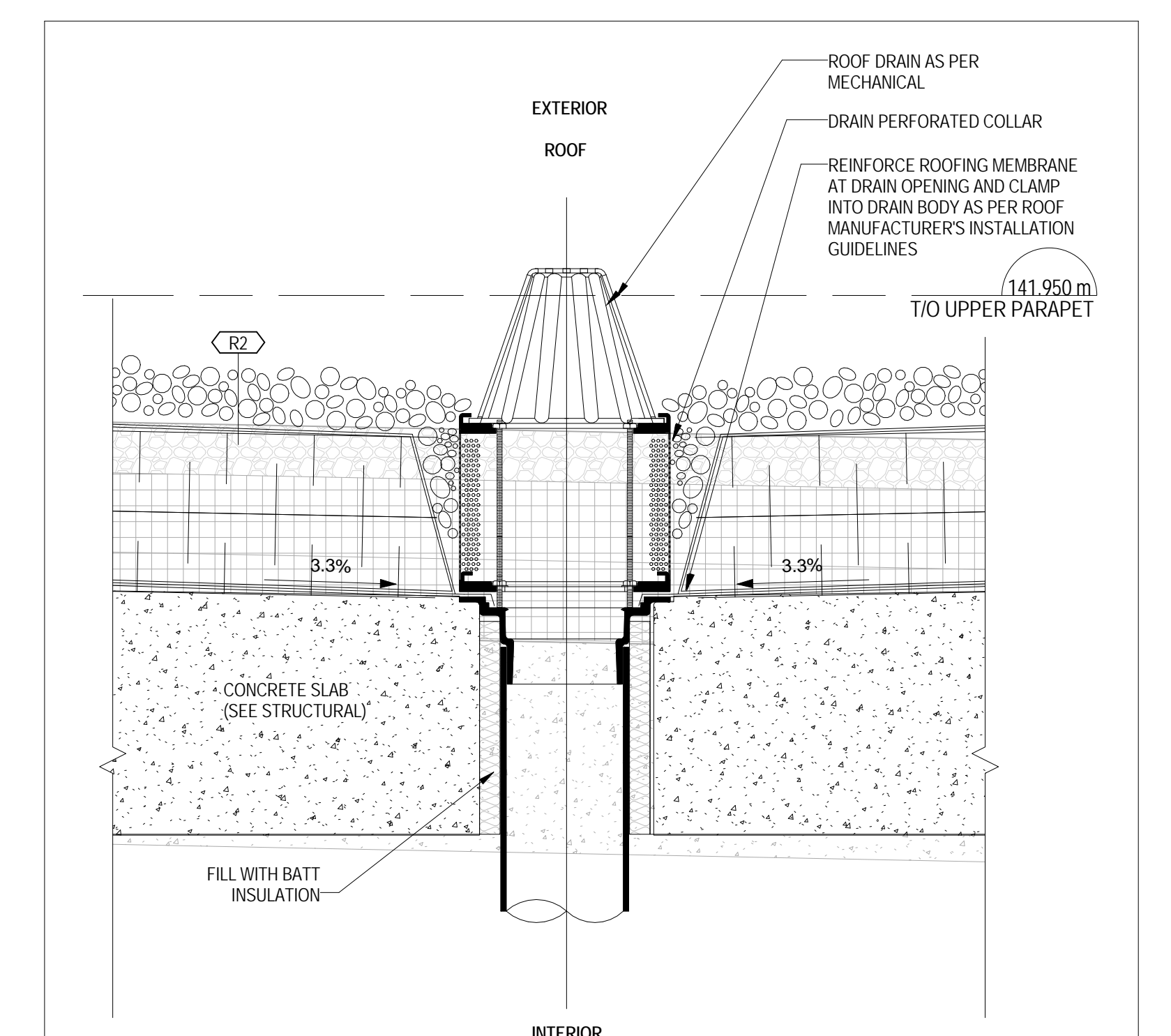
8 PARAPET SECTION AT COOLING TOWER  
1/1A 507 1:5



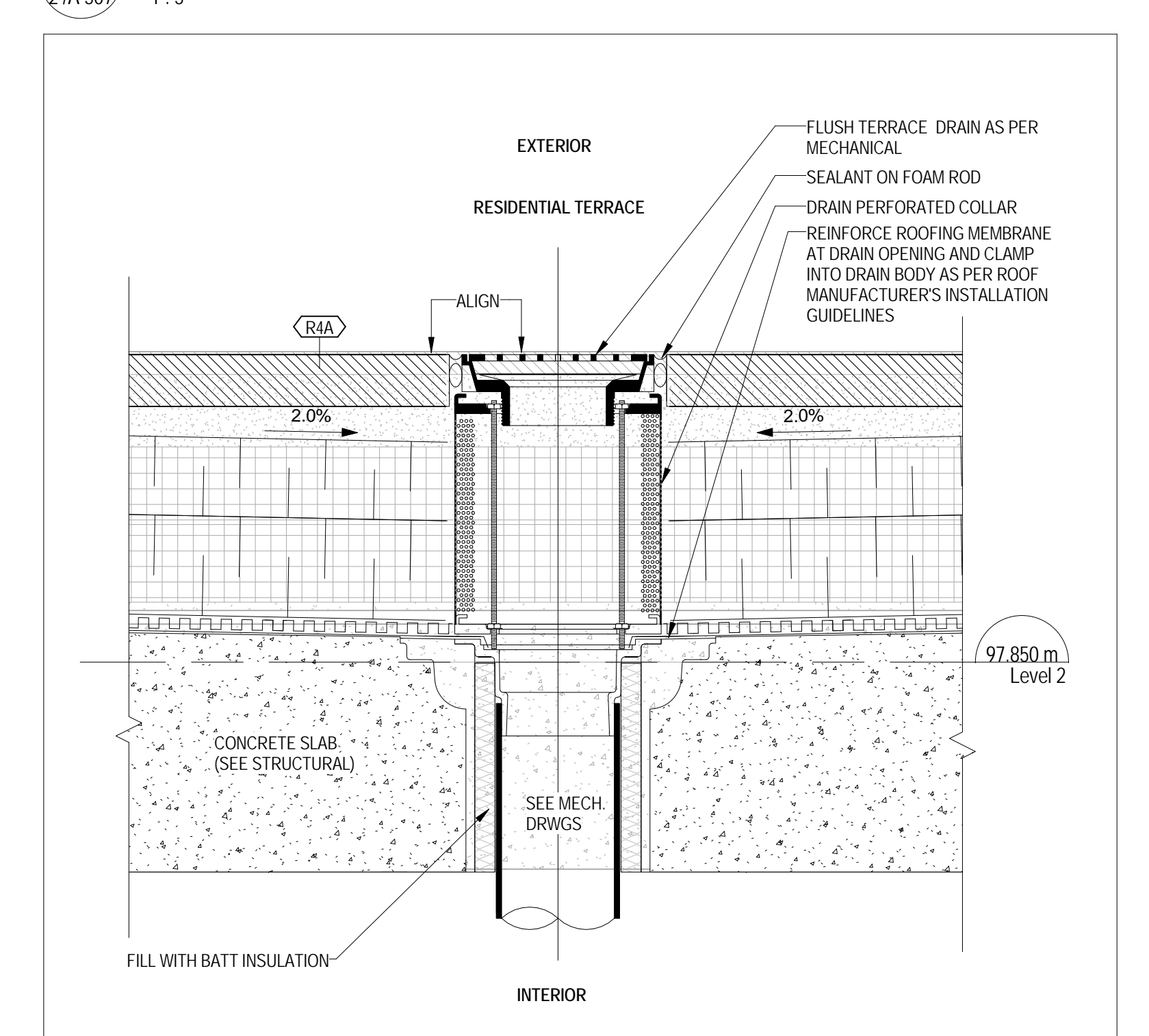
6 UPPER PARAPET SECTION  
2/1A 507 1:5



5 ROOF AT PENTHOUSE  
2/1A 507 1:5



2 ROOF DRAIN AT R2  
2/1A 507 1:5



1 TERRACE DRAIN AT R4A, R4B, R4C  
1/1A 505 1:5

10-115  
1:5  
TAL  
2/1  
2014-09-23



METRIC SCALE DRAWING  
FIRST FLOOR ELEV. +93.60m

| No. | ISSUED/REVISED FOR               | DATE       |
|-----|----------------------------------|------------|
| 1   | Issued for Coordination          | 2014-04-23 |
| 2   | Revised for Permit               | 2014-01-10 |
| 3   | Issued for Tender                | 2014-08-20 |
| 4   | Issued for Tender                | 2014-08-20 |
| 5   | Issued for Tender                | 2014-08-22 |
| 6   | Issued for Tender                | 2015-05-26 |
| 7   | Issued for Drywall Tender        | 2015-08-19 |
| 8   | Issued for Drywall Tender        | 2015-08-26 |
| 9   | Issued for Drywall Tender Add #1 | 2015-09-14 |

SQ ALEXANDRA PARK - BLOCK 11  
38 CAMERON ST. TORONTO, ONTARIO M6T 2H2

project no: 10-115  
scale: 1:5  
drawn by: TAL  
reviewed by: TAL  
date: 2014-09-23

Teepie Architects

TYPICAL ROOF AND TERRACE DETAILS

A 621