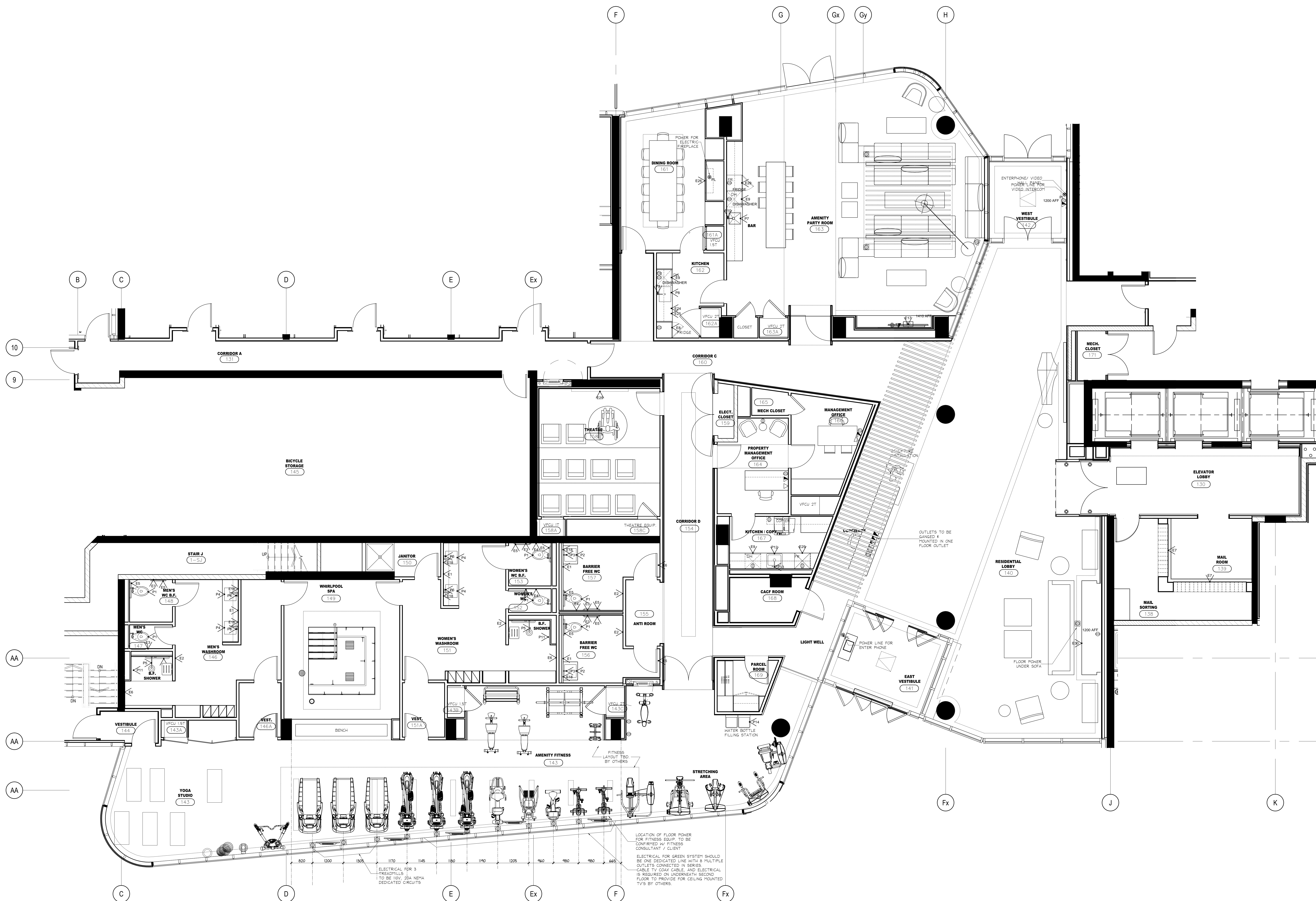


DO NOT SCALE DRAWINGS.

CONTRACTOR MUST VERIFY ALL DRAWINGS, DIMENSIONS, DETAILS AND SPECIFICATIONS, AND REPORT ANY DISCREPANCIES TO UNION 31 INC. BEFORE PROCEEDING WITH WORK. MATERIALS MAY NOT BE SUBSTITUTED WITHOUT WRITTEN APPROVAL FROM UNION 31 INC.
ALL DRAWINGS AND SPECIFICATIONS ARE INSTRUMENTS OF SERVICE AND THE PROPERTY OF UNION 31 INC. WHICH MUST BE RETURNED AT THE COMPLETION OF THE WORK.

PRINTED: 20-Aug-15



NO	DATE	COMMENTS	INI
11	20 AUG / 15	ISSUED FOR DRYPWALL TENDER	CB
10	15 JULY / 15	ISSUED FOR TRIM CARPENTRY TENDER	CB
09	18 JUNE / 15	ISSUED FOR FINISH CARPENTRY	CB
08	11 JUNE / 15	SITE INSTRUCTION #1	CB
03	06 MAR / 15	ISSUED FOR TILE TENDER	AP
02	26 JAN / 15	ISSUED FOR TENDER	AP
01	22 AUG / 14	ISSUED FOR PERMIT	AP

UNION 31
 UNION31 INC.
 183 BATHURST STREET, STE. 201
 TORONTO, ON, M5T 2R7, CANADA
 TEL: 416-597-1576 FAX: 416-597-2139

PROJECT NAME:
**ALEXANDRA PARK
 MAIN BUILDING**
 BLOCK 11
 ON, Canada

PROJECT NO.: 13-949
 DRAWINGS:
**GROUND FLOOR
 FURNITURE & POWER PLAN**

DATE STARTED: 07 AUG / 13
 SCALE: 1 : 50
 DRAWN BY: AP
 APPROVED BY: KC

DRAWING NO.:
**ID
 1.1.2**

1 FURNITURE & POWER PLAN
 101.1.2 GROUND FLOOR SCALE 1:50

LOCATION OF FLOOR POWER FOR FITNESS EQUIP. TO BE CONFIRMED BY FITNESS CONSULTANT / CLIENT
 ELECTRICAL FOR GREEN SYSTEM SHOULD BE ONE DEDICATED LINE WITH 8 MULTIPLE OUTLETS CONNECTED IN SERIES
 CABLE TV COAX CABLE AND ELECTRICAL IS REQUIRED ON UNDERNEATH SECOND FLOOR TO PROVIDE FOR CEILING MOUNTED TV'S BY OTHERS