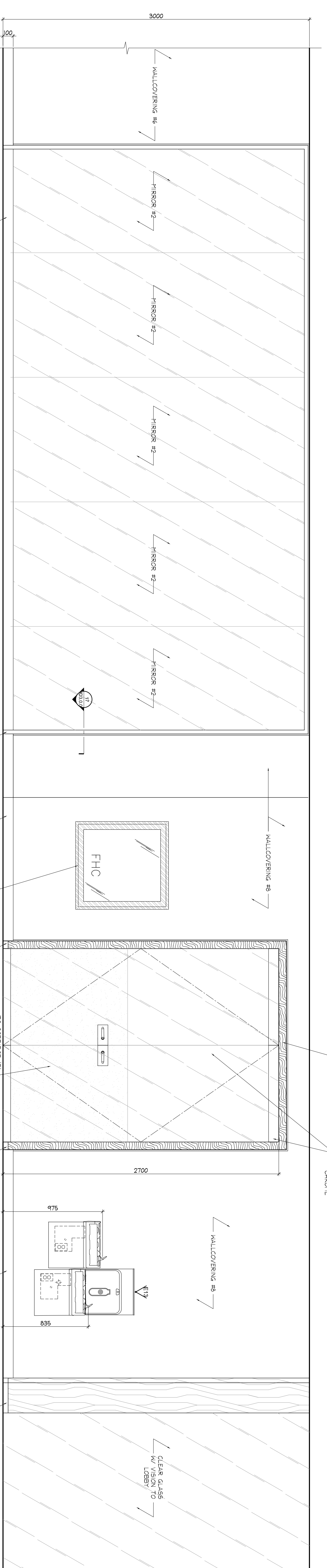


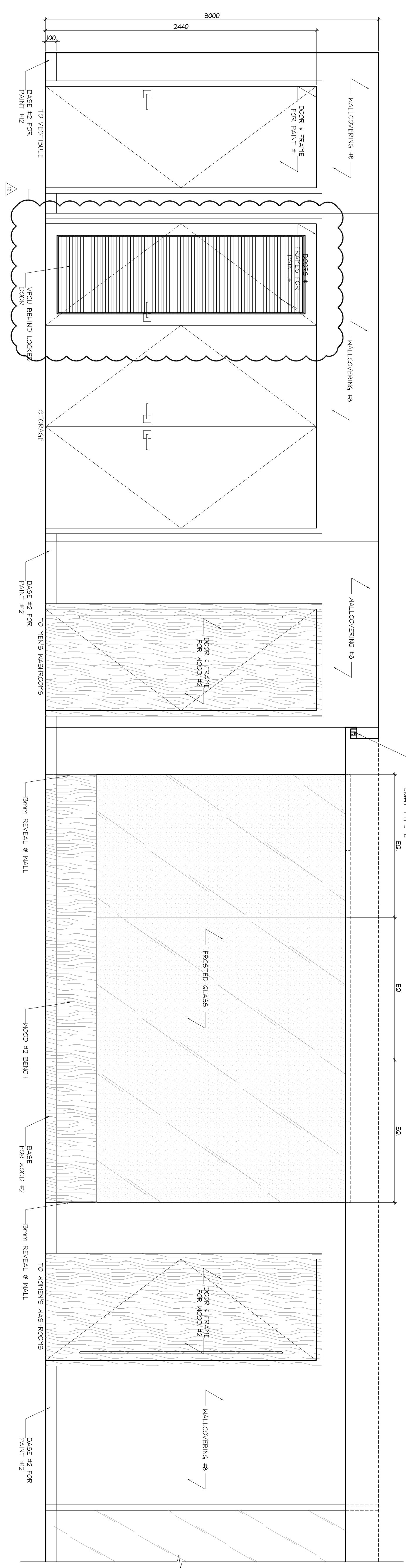
**DO NOT SCALE DRAWINGS.**

CONTRACTOR MUST VERIFY ALL DIMENSIONS, DIMENSIONS AND SPECIFICATIONS AND REPORT ANY DISCREPANCIES TO THE ARCHITECT IMMEDIATELY. ALL DIMENSIONS AND SPECIFICATIONS ARE BASED ON THE INFORMATION PROVIDED BY THE CLIENT. THE ARCHITECT ASSUMES NO LIABILITY FOR SERVICE AND THE PROPERTY OF AIA/CES WHICH MUST BE RETURNED AT THE COMPLETION OF THE WORK.

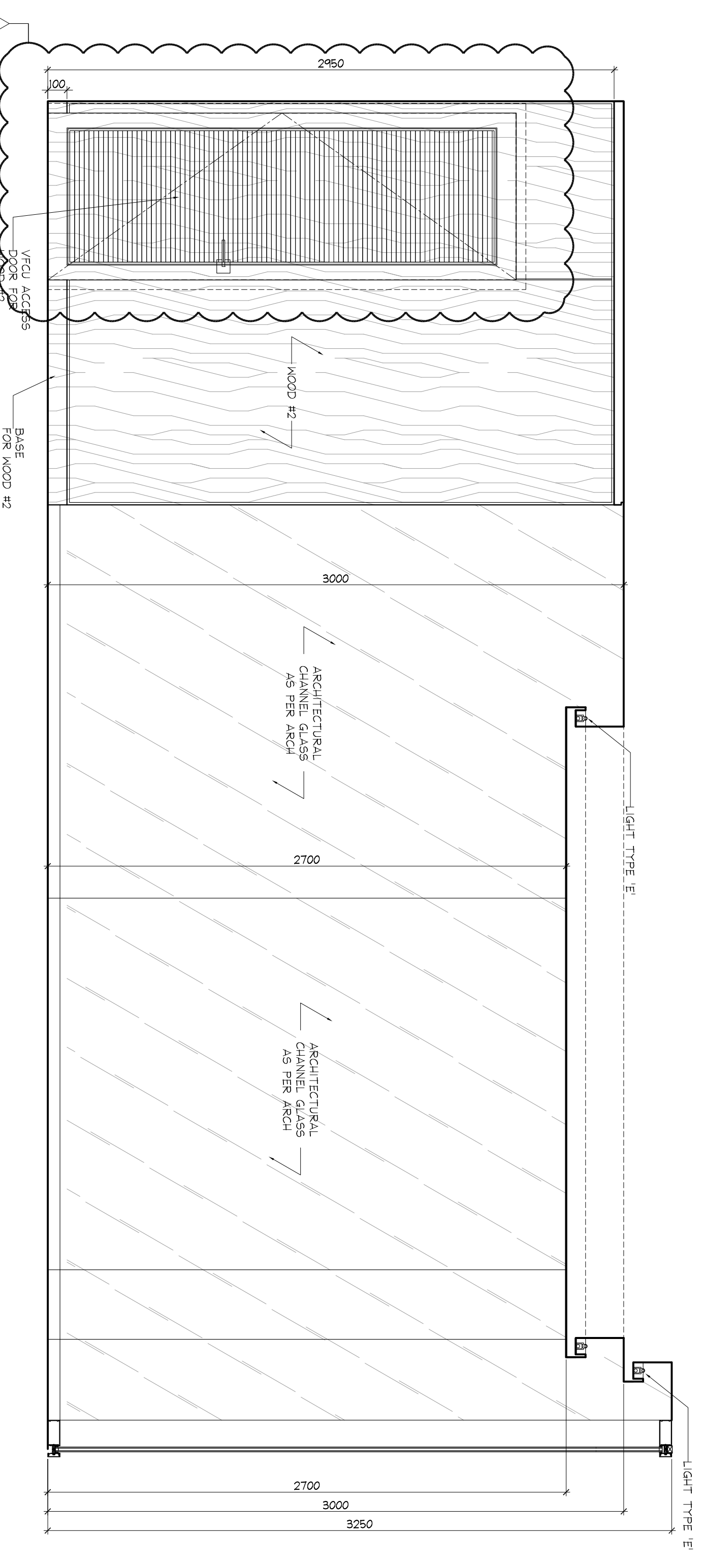
PRINTED: 21-Aug-23



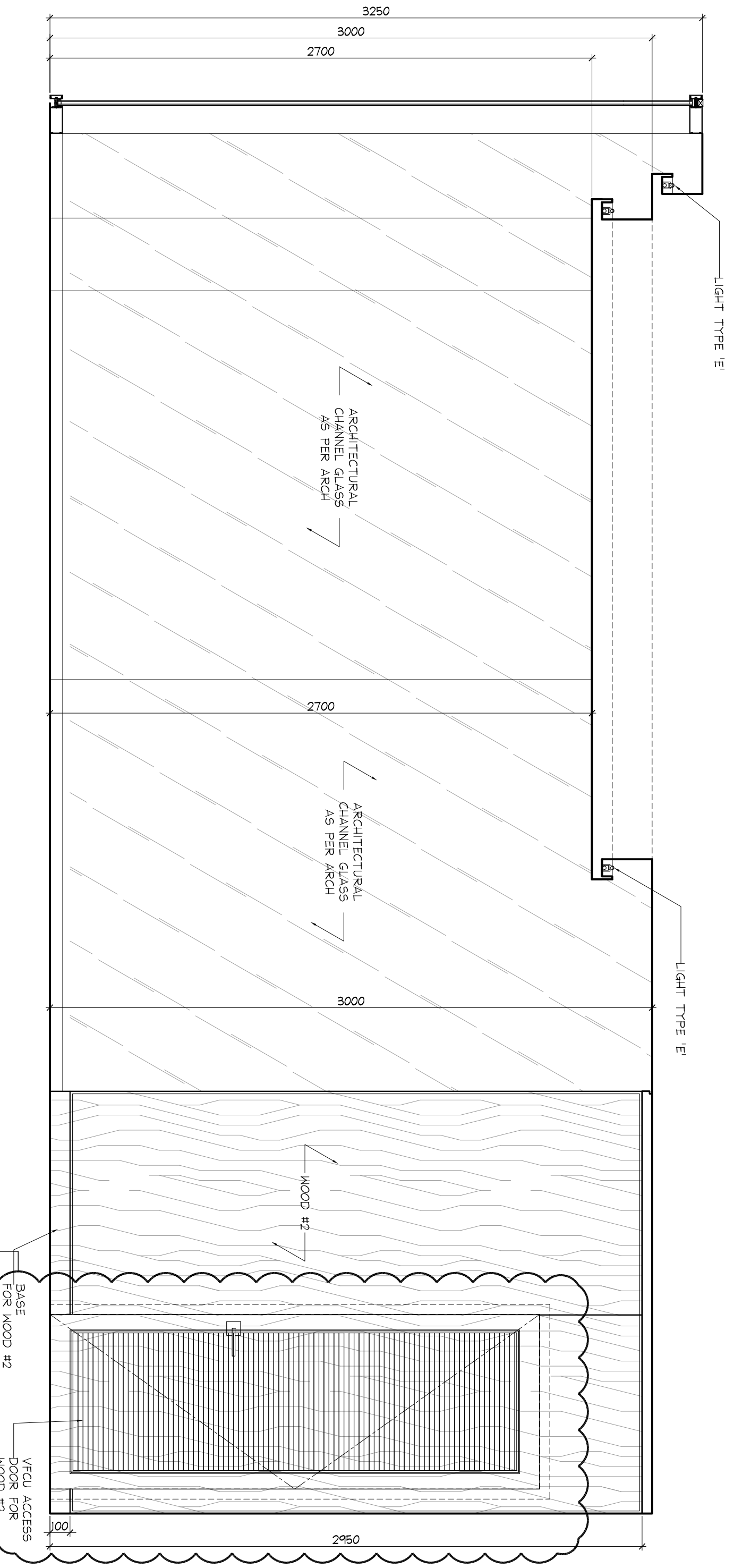
1 ELEVATION  
GROUND FLOOR  
STRETCHING AREA  
SCALE: 1/32



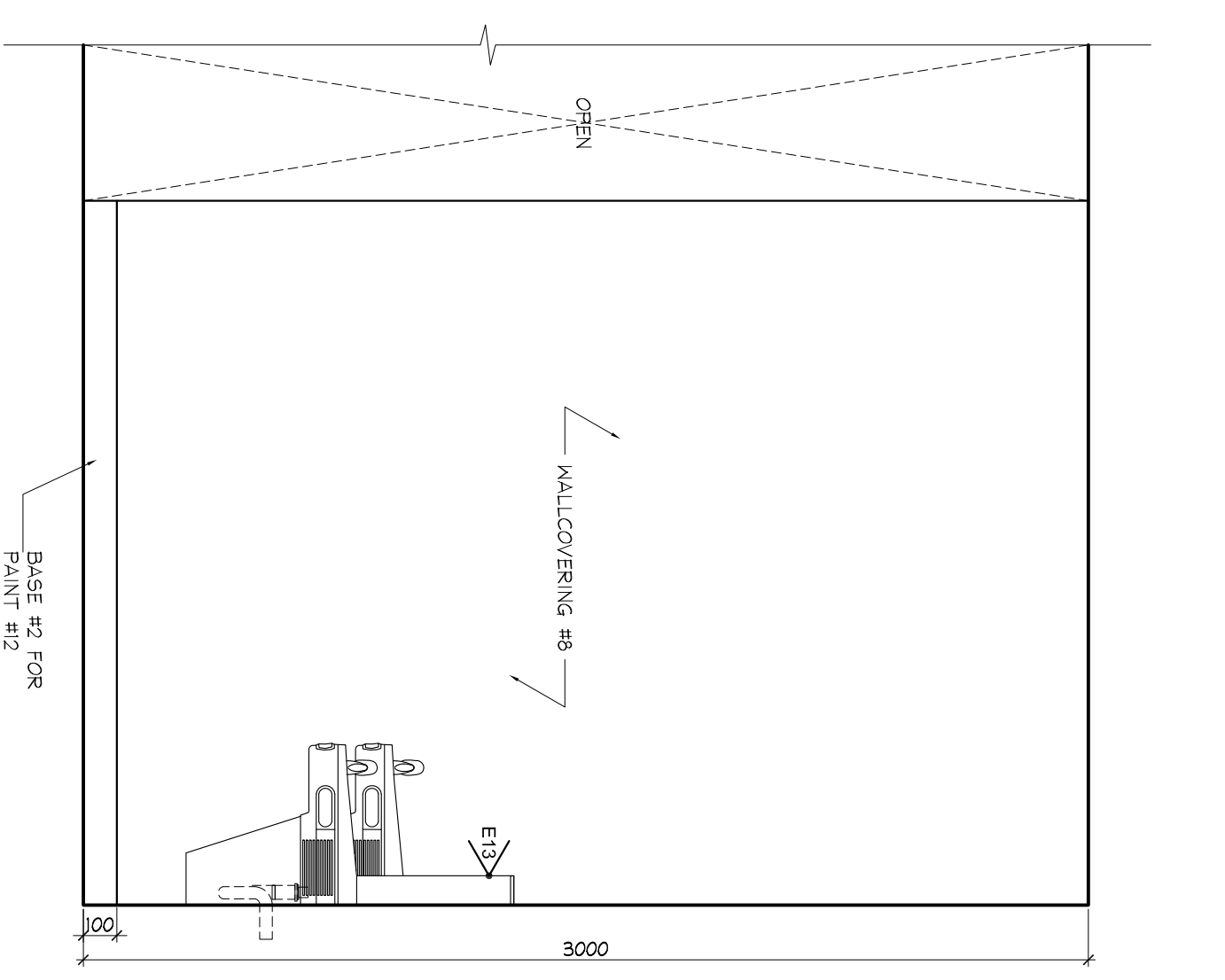
2 ELEVATION  
GROUND FLOOR  
WEIGHT ROOM  
SCALE: 1/32



3 ELEVATION  
GROUND FLOOR  
WEIGHT ROOM  
SCALE: 1/32



4 ELEVATION  
GROUND FLOOR  
WEIGHT ROOM  
SCALE: 1/32



5 ELEVATION  
GROUND FLOOR  
WEIGHT ROOM  
SCALE: 1/32

NO.	DATE	COMMENTS
01	21 AUG 14	ISSUED FOR PERMISSIVE APPROVAL
02	20 AUG 14	ISSUED FOR PERMISSIVE APPROVAL
03	12 JULY 12	ISSUED FOR PERMISSIVE APPROVAL
04	10 JULY 12	ISSUED FOR PERMISSIVE APPROVAL
05	09 JUNE 12	ISSUED FOR PERMISSIVE APPROVAL
06	29 MAY 12	ISSUED FOR PERMISSIVE APPROVAL
07	29 MAY 12	ISSUED FOR PERMISSIVE APPROVAL
08	29 MAY 12	ISSUED FOR PERMISSIVE APPROVAL
09	29 MAY 12	ISSUED FOR PERMISSIVE APPROVAL
10	29 MAY 12	ISSUED FOR PERMISSIVE APPROVAL
11	29 MAY 12	ISSUED FOR PERMISSIVE APPROVAL
12	29 MAY 12	ISSUED FOR PERMISSIVE APPROVAL
13	29 MAY 12	ISSUED FOR PERMISSIVE APPROVAL
14	29 MAY 12	ISSUED FOR PERMISSIVE APPROVAL
15	29 MAY 12	ISSUED FOR PERMISSIVE APPROVAL
16	29 MAY 12	ISSUED FOR PERMISSIVE APPROVAL
17	29 MAY 12	ISSUED FOR PERMISSIVE APPROVAL
18	29 MAY 12	ISSUED FOR PERMISSIVE APPROVAL
19	29 MAY 12	ISSUED FOR PERMISSIVE APPROVAL
20	29 MAY 12	ISSUED FOR PERMISSIVE APPROVAL
21	29 MAY 12	ISSUED FOR PERMISSIVE APPROVAL
22	29 MAY 12	ISSUED FOR PERMISSIVE APPROVAL
23	29 MAY 12	ISSUED FOR PERMISSIVE APPROVAL
24	29 MAY 12	ISSUED FOR PERMISSIVE APPROVAL
25	29 MAY 12	ISSUED FOR PERMISSIVE APPROVAL
26	29 MAY 12	ISSUED FOR PERMISSIVE APPROVAL
27	29 MAY 12	ISSUED FOR PERMISSIVE APPROVAL
28	29 MAY 12	ISSUED FOR PERMISSIVE APPROVAL
29	29 MAY 12	ISSUED FOR PERMISSIVE APPROVAL
30	29 MAY 12	ISSUED FOR PERMISSIVE APPROVAL
31	29 MAY 12	ISSUED FOR PERMISSIVE APPROVAL
32	29 MAY 12	ISSUED FOR PERMISSIVE APPROVAL
33	29 MAY 12	ISSUED FOR PERMISSIVE APPROVAL
34	29 MAY 12	ISSUED FOR PERMISSIVE APPROVAL
35	29 MAY 12	ISSUED FOR PERMISSIVE APPROVAL
36	29 MAY 12	ISSUED FOR PERMISSIVE APPROVAL
37	29 MAY 12	ISSUED FOR PERMISSIVE APPROVAL
38	29 MAY 12	ISSUED FOR PERMISSIVE APPROVAL
39	29 MAY 12	ISSUED FOR PERMISSIVE APPROVAL
40	29 MAY 12	ISSUED FOR PERMISSIVE APPROVAL
41	29 MAY 12	ISSUED FOR PERMISSIVE APPROVAL
42	29 MAY 12	ISSUED FOR PERMISSIVE APPROVAL
43	29 MAY 12	ISSUED FOR PERMISSIVE APPROVAL
44	29 MAY 12	ISSUED FOR PERMISSIVE APPROVAL
45	29 MAY 12	ISSUED FOR PERMISSIVE APPROVAL
46	29 MAY 12	ISSUED FOR PERMISSIVE APPROVAL
47	29 MAY 12	ISSUED FOR PERMISSIVE APPROVAL
48	29 MAY 12	ISSUED FOR PERMISSIVE APPROVAL
49	29 MAY 12	ISSUED FOR PERMISSIVE APPROVAL
50	29 MAY 12	ISSUED FOR PERMISSIVE APPROVAL
51	29 MAY 12	ISSUED FOR PERMISSIVE APPROVAL
52	29 MAY 12	ISSUED FOR PERMISSIVE APPROVAL
53	29 MAY 12	ISSUED FOR PERMISSIVE APPROVAL
54	29 MAY 12	ISSUED FOR PERMISSIVE APPROVAL
55	29 MAY 12	ISSUED FOR PERMISSIVE APPROVAL
56	29 MAY 12	ISSUED FOR PERMISSIVE APPROVAL
57	29 MAY 12	ISSUED FOR PERMISSIVE APPROVAL
58	29 MAY 12	ISSUED FOR PERMISSIVE APPROVAL
59	29 MAY 12	ISSUED FOR PERMISSIVE APPROVAL
60	29 MAY 12	ISSUED FOR PERMISSIVE APPROVAL
61	29 MAY 12	ISSUED FOR PERMISSIVE APPROVAL
62	29 MAY 12	ISSUED FOR PERMISSIVE APPROVAL
63	29 MAY 12	ISSUED FOR PERMISSIVE APPROVAL
64	29 MAY 12	ISSUED FOR PERMISSIVE APPROVAL
65	29 MAY 12	ISSUED FOR PERMISSIVE APPROVAL
66	29 MAY 12	ISSUED FOR PERMISSIVE APPROVAL
67	29 MAY 12	ISSUED FOR PERMISSIVE APPROVAL
68	29 MAY 12	ISSUED FOR PERMISSIVE APPROVAL
69	29 MAY 12	ISSUED FOR PERMISSIVE APPROVAL
70	29 MAY 12	ISSUED FOR PERMISSIVE APPROVAL
71	29 MAY 12	ISSUED FOR PERMISSIVE APPROVAL
72	29 MAY 12	ISSUED FOR PERMISSIVE APPROVAL
73	29 MAY 12	ISSUED FOR PERMISSIVE APPROVAL
74	29 MAY 12	ISSUED FOR PERMISSIVE APPROVAL
75	29 MAY 12	ISSUED FOR PERMISSIVE APPROVAL
76	29 MAY 12	ISSUED FOR PERMISSIVE APPROVAL
77	29 MAY 12	ISSUED FOR PERMISSIVE APPROVAL
78	29 MAY 12	ISSUED FOR PERMISSIVE APPROVAL
79	29 MAY 12	ISSUED FOR PERMISSIVE APPROVAL
80	29 MAY 12	ISSUED FOR PERMISSIVE APPROVAL
81	29 MAY 12	ISSUED FOR PERMISSIVE APPROVAL
82	29 MAY 12	ISSUED FOR PERMISSIVE APPROVAL
83	29 MAY 12	ISSUED FOR PERMISSIVE APPROVAL
84	29 MAY 12	ISSUED FOR PERMISSIVE APPROVAL
85	29 MAY 12	ISSUED FOR PERMISSIVE APPROVAL
86	29 MAY 12	ISSUED FOR PERMISSIVE APPROVAL
87	29 MAY 12	ISSUED FOR PERMISSIVE APPROVAL
88	29 MAY 12	ISSUED FOR PERMISSIVE APPROVAL
89	29 MAY 12	ISSUED FOR PERMISSIVE APPROVAL
90	29 MAY 12	ISSUED FOR PERMISSIVE APPROVAL
91	29 MAY 12	ISSUED FOR PERMISSIVE APPROVAL
92	29 MAY 12	ISSUED FOR PERMISSIVE APPROVAL
93	29 MAY 12	ISSUED FOR PERMISSIVE APPROVAL
94	29 MAY 12	ISSUED FOR PERMISSIVE APPROVAL
95	29 MAY 12	ISSUED FOR PERMISSIVE APPROVAL
96	29 MAY 12	ISSUED FOR PERMISSIVE APPROVAL
97	29 MAY 12	ISSUED FOR PERMISSIVE APPROVAL
98	29 MAY 12	ISSUED FOR PERMISSIVE APPROVAL
99	29 MAY 12	ISSUED FOR PERMISSIVE APPROVAL
100	29 MAY 12	ISSUED FOR PERMISSIVE APPROVAL

**UNOB1**  
**UNOB INC.**  
 183 BATHURST STREET, STE 201  
 TORONTO, ON M5T 2R7 CANADA  
 TEL: 416-597-1576 FAX: 416-597-2139

**ALEXANDRA PARK  
 MAIN BUILDING**  
 ROOM 11  
 ON, Canada  
 PROJECT NO.: 13-349

**GROUND FLOOR  
 ELEVATIONS**

DATE STARTED: 07 AUG 13  
 SCALE: 1/32  
 DRAWING NO.: **ID**  
 APPROVED BY: **KC**  
**2.1.6**