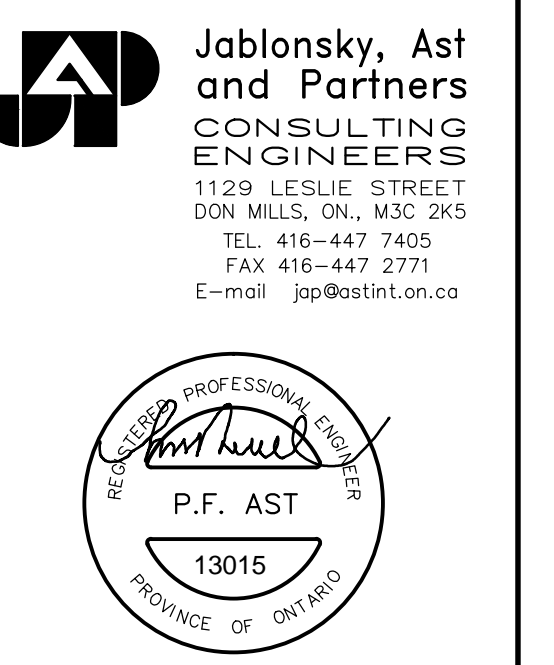


9TH FLOOR FRAMING PLAN

SCALE 1 : 100

- TOP OF SLAB IS AT ELEVATION AS SHOWN ON ARCH. DRAWINGS EXCEPT AS CROSSED AND NOTED ON PLAN.
- CONCRETE STRENGTH AT 28 DAYS SHALL BE:
 FOR WALLS AND COLUMNS SEE SCHEDULE
 FOR EXT. SLABS 35 MPa
 FOR INTERIOR SLABS 25 MPa
 FOR BEAMS 35 MPa
 CONCRETE EXPOSED TO ELEMENTS SHALL BE 35 MPa WITH 6% TO 8% ENTRAINED AIR.
- FLOOR SLABS ARE DESIGNED FOR FOLLOWING LOADING CONDITIONS :
- MINIMUM YIELD STRESS FOR REINFORCING STEEL SHALL BE 400 MPa.
- TEMPERATURE REINFORCING FOR : 200 SLAB IS 100250, 210 SLAB IS 100230.
- NO OPENINGS LARGER THAN 300mm x 300mm ARE ALLOWED IN SLAB OTHER THAN THOSE SHOWN ON DRAWINGS.
- SEE TYPICAL DETAILS ON DRAWINGS S-001 TO S-006.
- SEE GENERAL NOTES ON DRAWING S-001.
- REFER TO ARCH. DRAWINGS FOR SLOPES OF SLAB.
- FOR COLUMN & WALL SCHEDULE SEE DRAWINGS S-301 TO S-306.
- COORDINATE BEAM DEPTH AT DOOR OPENINGS WITH ARCH. DRAWINGS.
- EXTEND TEMP. REINF. TO END OF BALCONIES/OVERHANGS.
- TOP BARS TERMINATING AT EDGE OF SLAB TO HAVE 180° HOOK.

	S.I.D.	L.L.
STAIRS & BALCONIES	0.50 KPa	4.80 KPa
LOCKERS & STORAGE *	1.30 KPa	4.80 KPa
RESIDENTIAL	1.3 KPa	1.9 KPa
TOILETS	1.30 KPa	2.40 KPa
TERRACES	5.0 KPa	4.80 KPa



Jablonsky, Ast and Partners
 CONSULTING ENGINEERS
 1128 LESLIE STREET
 DON MILLS, ON, M3C 2G5
 TEL: 416-447-7800
 FAX: 416-447-2771
 E-mail: jast@jastinc.com

IMPERIAL SCALE DRAWING
 FIRST FLOOR ELEV. 93.60m

no.	Issued / Revised	date
1	ISSUED FOR PERMIT	2014/03/26
2	REVISOR FOR PERMIT	2014/03/19

ALEXANDRA PARK - BLOCK 11
 TORONTO, ONTARIO

project no: 13015
 scale: 1:100
 drawn by: H.W. HOUSMAN
 reviewed by: H.W. HOUSMAN
 date started: MARCH 2014

9TH FLOOR FRAMING PLAN