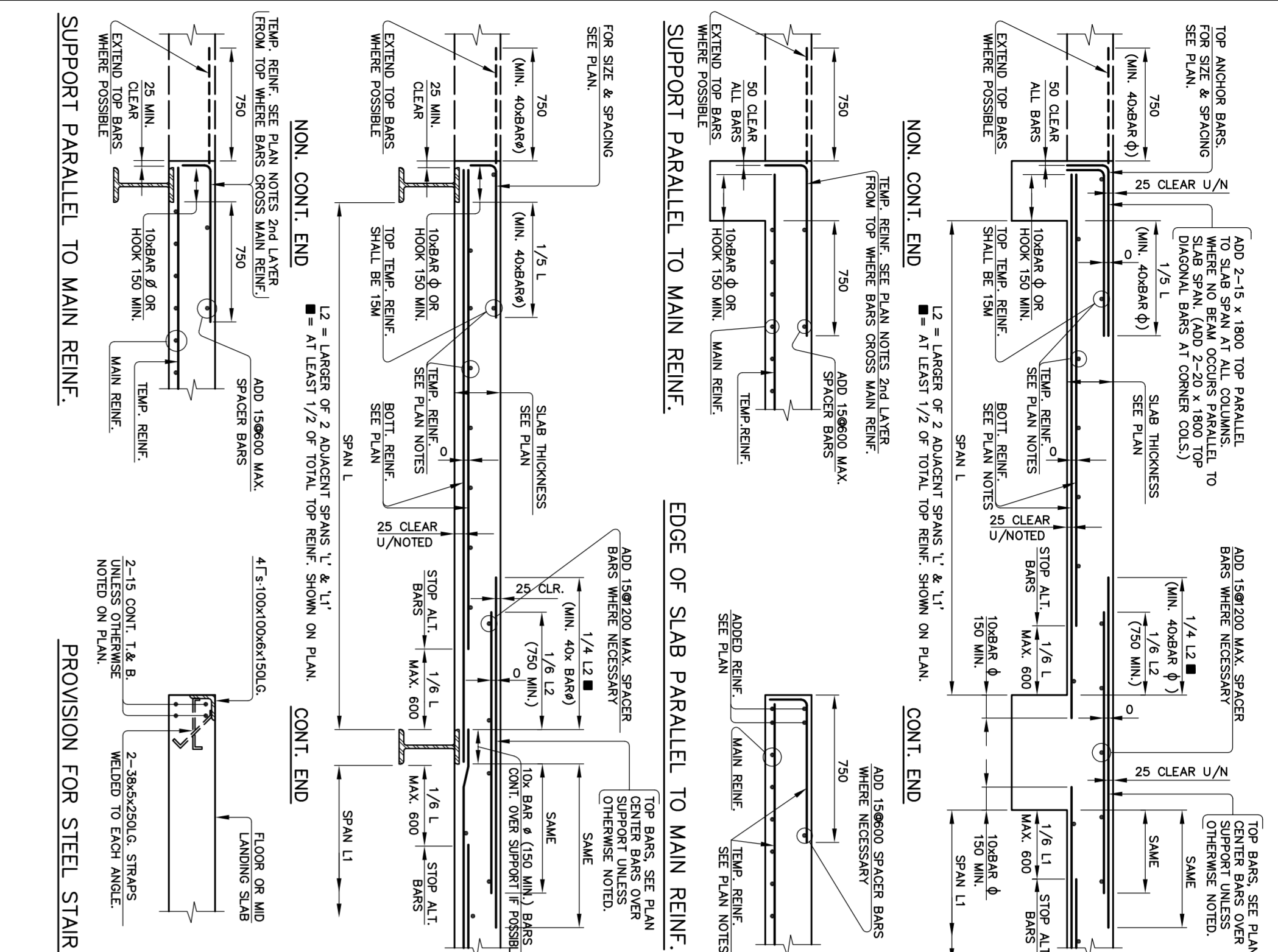


500 TYPICAL ONEWAY SLAB DETAILS



502 TYPICAL FLAT PLATE & FLAT SLAB DETAILS

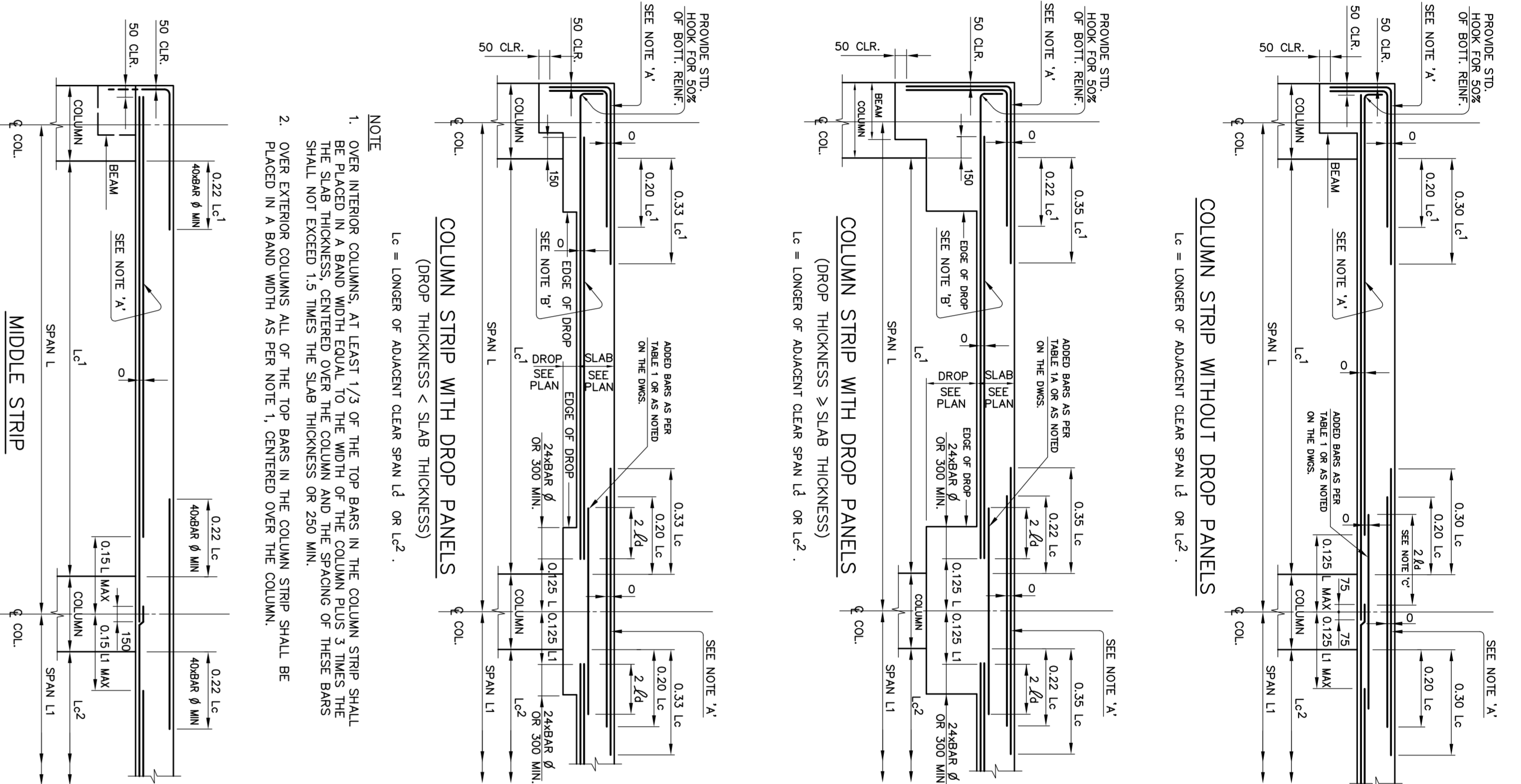
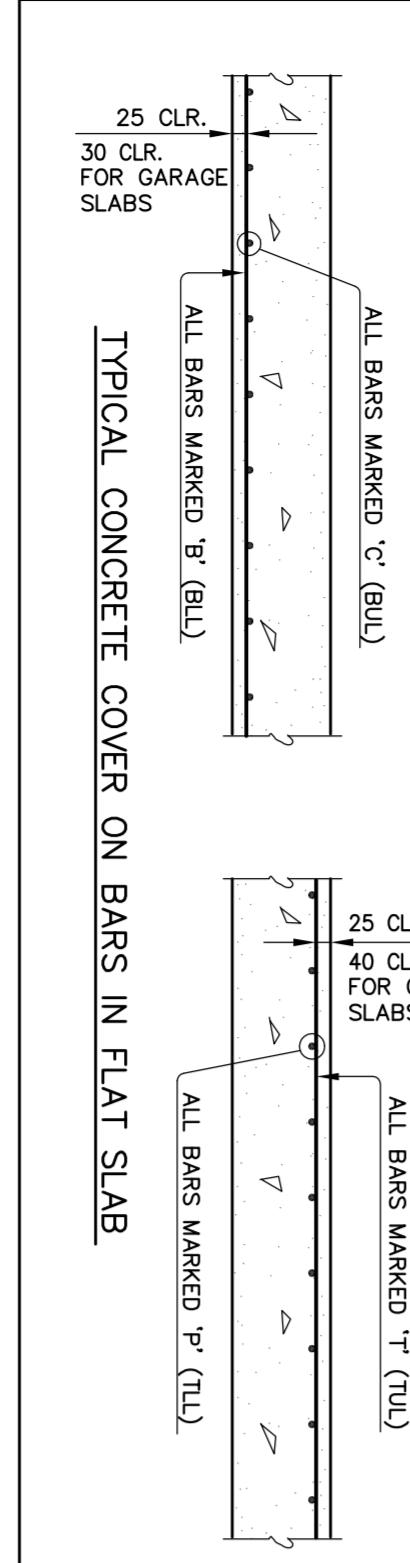


TABLE No. 1
FIBRE GLASS REINFORCEMENT AT COLUMNS

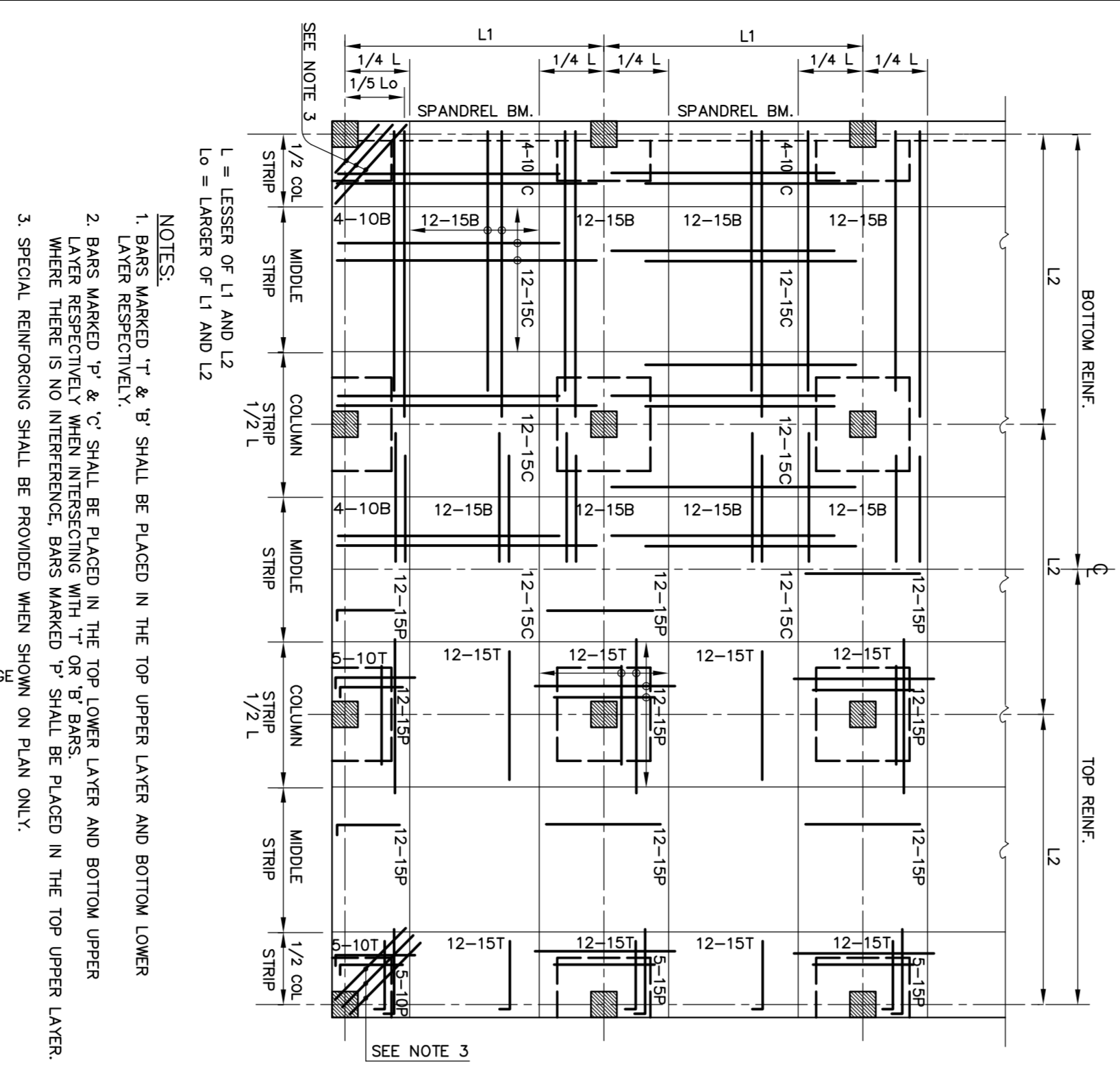
SLAB THICKNESS (mm)	REINFORCEMENT
180	2-20
200	2-20
220	2-20
240	2-20
260	2-25
280	2-25
300	2-25
320	2-25
340	2-25
360	2-25
380	2-25
400	2-25
420	2-25
440	2-25
460	2-25
480	2-25
500	2-25
520	2-25
540	2-25
560	2-25
580	2-25
600	2-25
620	2-25
640	2-25
660	2-25
680	2-25
700	2-25
720	2-25
740	2-25
760	2-25
780	2-25
800	2-25
820	2-25
840	2-25
860	2-25
880	2-25
900	2-25
920	2-25
940	2-25
960	2-25
980	2-25
1000	2-25

TABLE No. 1A
FIBRE GLASS REINFORCEMENT AT COLUMNS

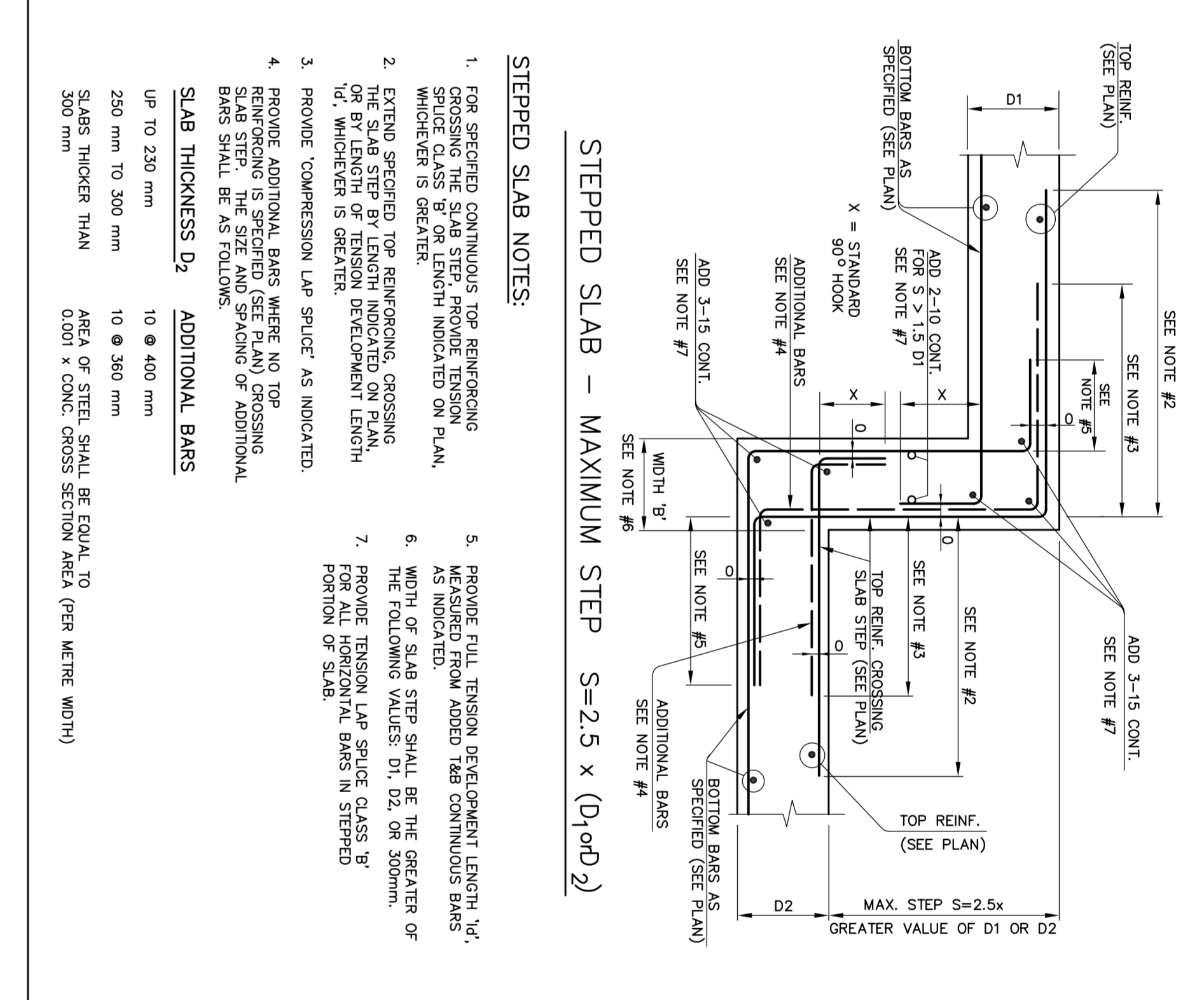
SLAB THICKNESS (mm)	REINFORCEMENT
180	2-20
200	2-20
220	2-20
240	2-20
260	2-25
280	2-25
300	2-25
320	2-25
340	2-25
360	2-25
380	2-25
400	2-25
420	2-25
440	2-25
460	2-25
480	2-25
500	2-25
520	2-25
540	2-25
560	2-25
580	2-25
600	2-25
620	2-25
640	2-25
660	2-25
680	2-25
700	2-25
720	2-25
740	2-25
760	2-25
780	2-25
800	2-25
820	2-25
840	2-25
860	2-25
880	2-25
900	2-25
920	2-25
940	2-25
960	2-25
980	2-25
1000	2-25



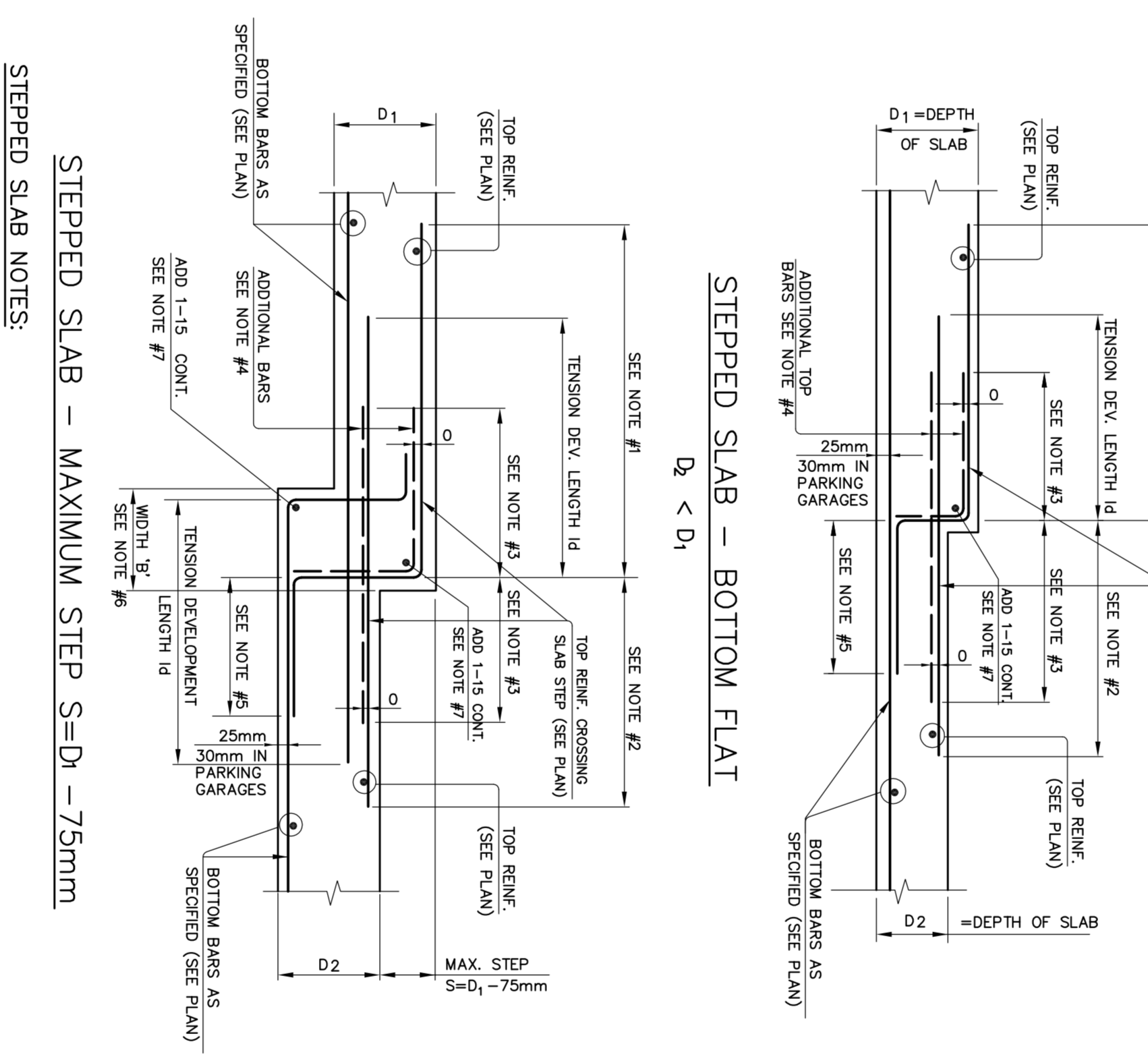
501 ARRANGEMENT OF REINFORCING BARS IN FLAT SLAB



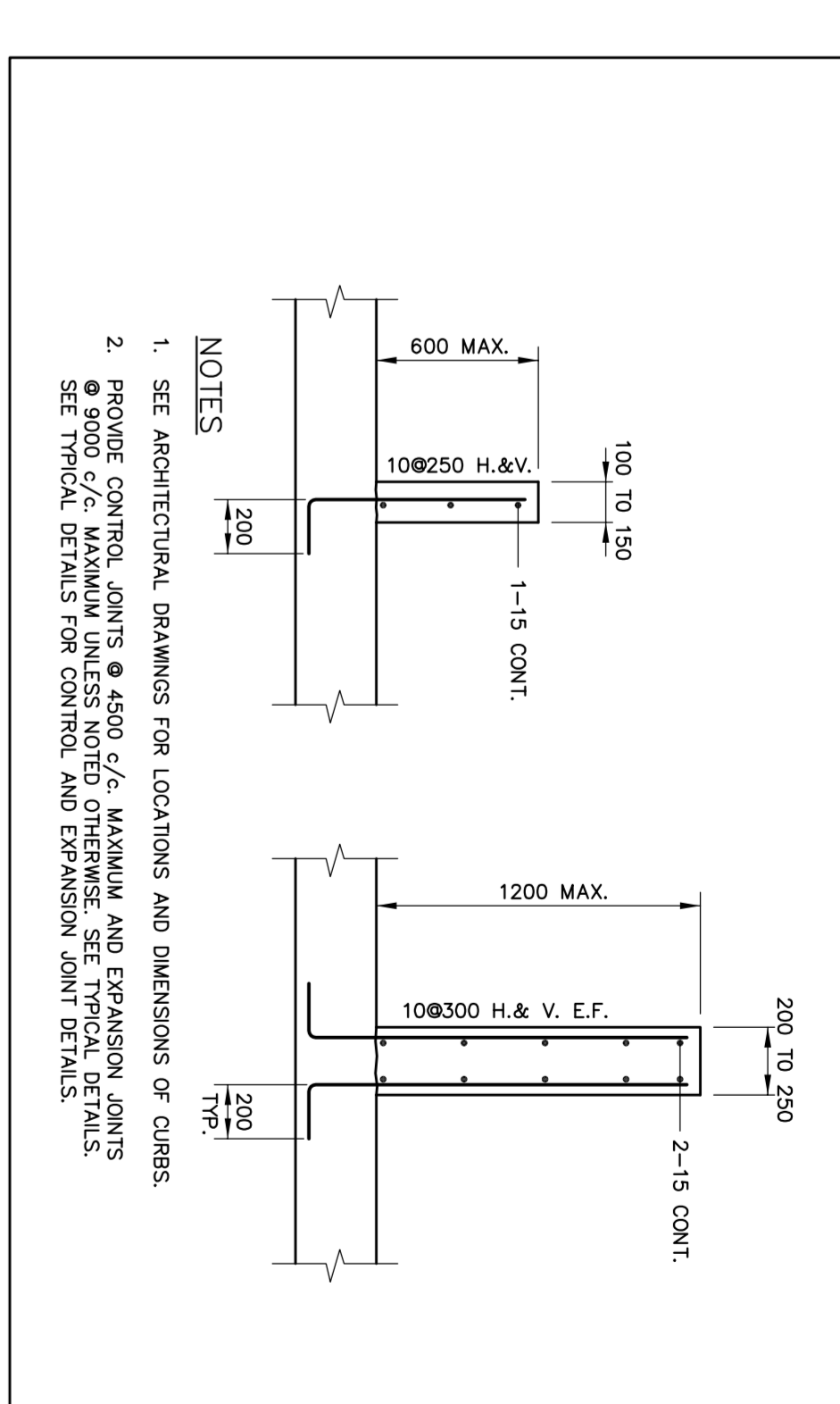
503 TYPICAL DETAILS OF STEPPED SLABS-CASE 1



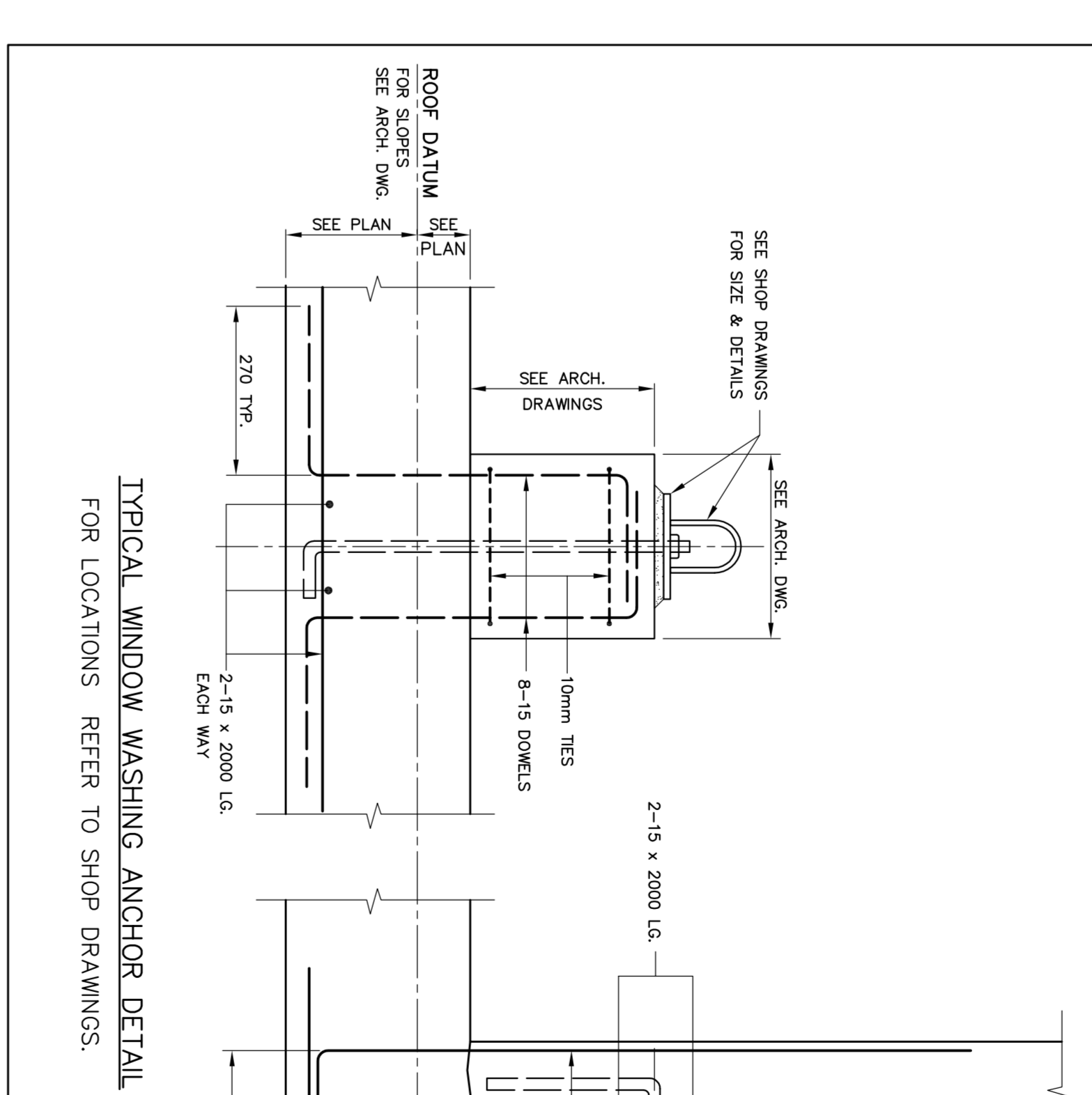
504 TYPICAL DETAILS OF STEPPED SLABS-CASE 2



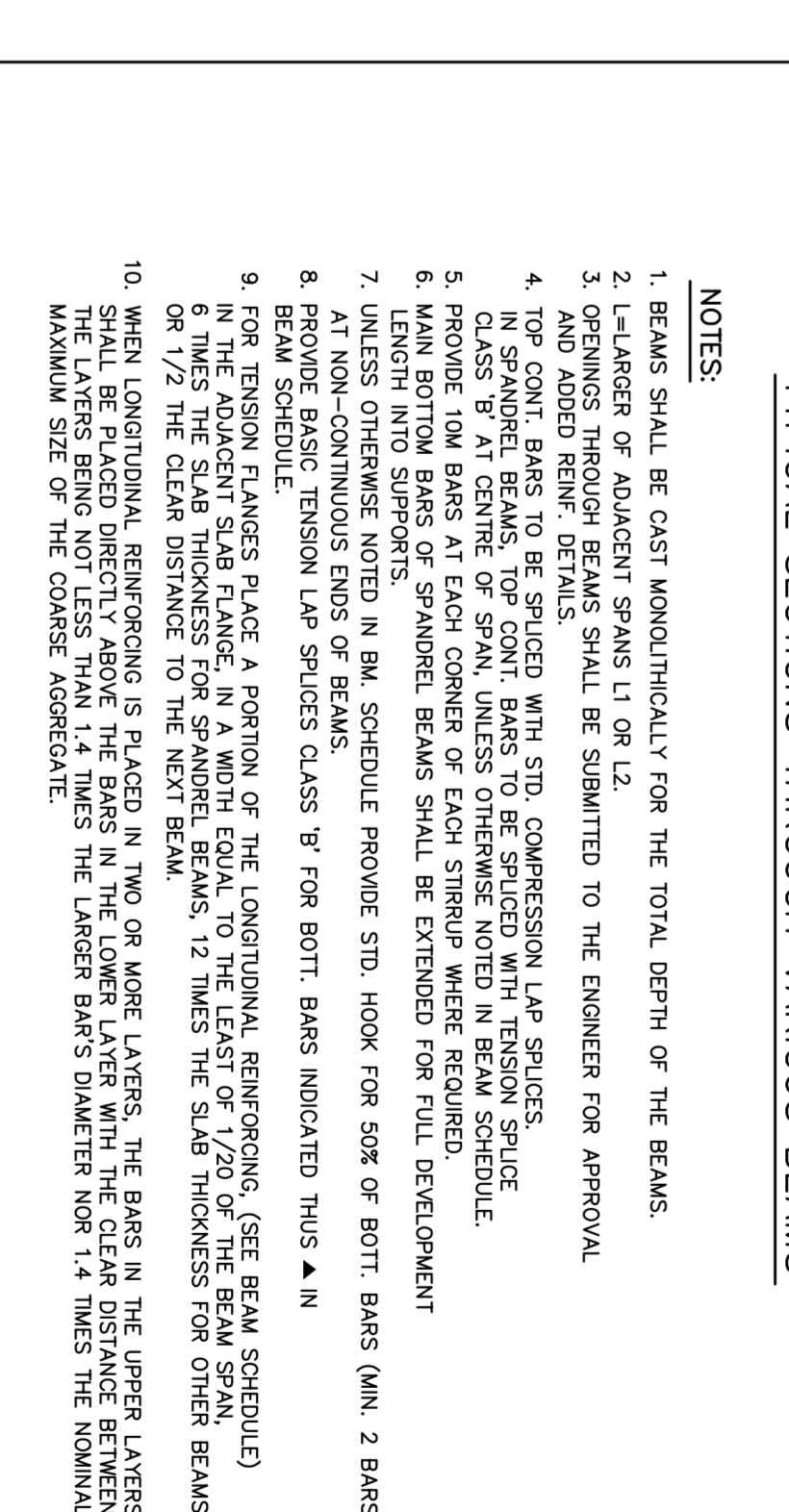
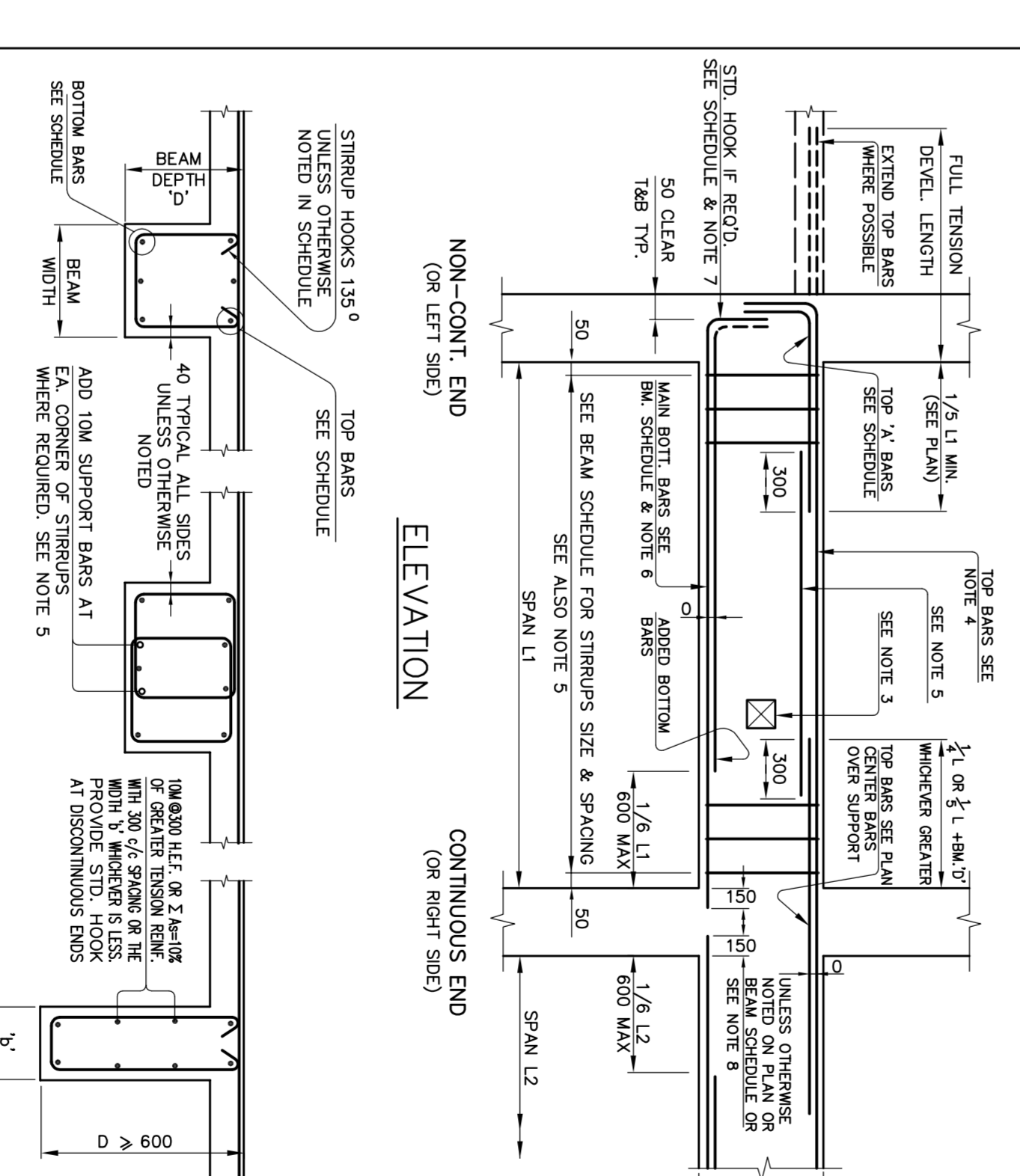
505 TYPICAL CONCRETE CURB DETAILS



506 TYPICAL WINDOW WASHING ANCHOR DETAIL



600 TYPICAL BEAMS DETAILS



ALEXANDRA PARK - BLOCK 11
TORONTO, ONTARIO

DATE: 14/03/2014
DRAWN BY: M. H. HANNA
CHECKED BY: M. H. HANNA
DATE: 14/03/2014

1. BEAMS SHALL BE CAST MONOLITHICALLY FOR THE TOTAL LENGTH OF THE BEAMS.
2. BEAMS SHALL BE CAST MONOLITHICALLY FOR THE TOTAL LENGTH OF THE BEAMS.
3. OPENINGS THROUGH BEAMS SHALL BE APPROVED BY THE ENGINEER FOR APPROVAL.
4. TOP AND BOTTOM REINFORCEMENT SHALL BE PROVIDED WITH SLD, COMPRESSION LAP SPICE.
5. TOP AND BOTTOM REINFORCEMENT SHALL BE PROVIDED WITH SLD, COMPRESSION LAP SPICE.
6. PROVIDE TOP BARS AT EACH CORNER OF EACH TYPICAL BEAM WHERE REQUIRED.
7. PROVIDE TOP BARS AT EACH CORNER OF EACH TYPICAL BEAM WHERE REQUIRED.
8. PROVIDE TOP BARS AT EACH CORNER OF EACH TYPICAL BEAM WHERE REQUIRED.
9. PROVIDE TOP BARS AT EACH CORNER OF EACH TYPICAL BEAM WHERE REQUIRED.
10. PROVIDE TOP BARS AT EACH CORNER OF EACH TYPICAL BEAM WHERE REQUIRED.

Johansky, A&P
ENGINEERS
1000 SHEPPARD AV. E. SUITE 200
SCARBOROUGH, ONTARIO M1B 4Y7
TEL: 416-441-2777
FAX: 416-441-2777
WWW.JOHANSKY.COM