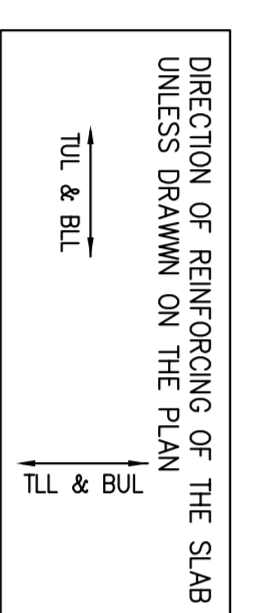


**4TH FLOOR FRAMING PLAN**

SCALE 1:100

- TOP OF SLAB IS AT ELEVATION AS SHOWN ON ARCH. DRAWINGS EXCEPT AS CROSSED AND NOTED ON PLAN.
- CONCRETE STRENGTH AT 28 DAYS SHALL BE:
  - FOR WALLS AND COLUMNS ..... SEE SCHEDULE FOR EXT. SLABS
  - FOR EXT. SLABS ..... 35 MPa
  - FOR INTERIOR SLABS ..... 25 MPa
  - FOR DECKING ..... 25 MPa
- FLOOR SLABS ARE DESIGNED FOR FOLLOWING LOADING CONDITIONS:
 

	S.U.D.	L.L.
STAIRS & BALCONIES	0.50 kPa	4.80 kPa
LOOKERS & STORAGE *	1.30 kPa	4.80 kPa
RESIDENTIAL	1.30 kPa	1.9 kPa
TOILETS	1.30 kPa	2.40 kPa
TERRACES	5.0 kPa	4.80 kPa



- MINIMUM YIELD STRESS FOR REINFORCING STEEL SHALL BE 400 MPa.
- TEMPERATURE REINFORCING FOR: 200 SLAB IS 100% S-20. IN SLAB OTHER THAN THOSE SHOWN ON DRAWINGS.
- NO OPENINGS LARGER THAN 300mm x 300mm ARE ALLOWED.
- SEE TYPICAL DETAILS ON DRAWINGS S-001 TO S-005.
- SEE GENERAL NOTES ON DRAWING S-001.
- REFERS TO ARCH. DRAWINGS FOR STAIRS OF SLAB.
- FOR COLUMN & WALL SCHEDULE SEE DRAWINGS S-201 TO S-208.
- CORONAUTE BEAM DEPTH AT DOOR OPENINGS WITH ARCH. DRAWINGS.
- EXTEND TEMP. REIN- TO END OF BALCONES/OVERHANGS.
- TOP BARS TERMINATING AT EDGE OF SLAB TO HAVE 180° HOOK.

**ALEXANDRA PARK - BLOCK 11**  
TORONTO, ONTARIO

DATE: 11/02/2014  
DRAWN BY: M.M. MUMTAZ  
CHECKED BY: M.M. MUMTAZ  
DATE: 11/02/2014

**Jahromsky, Asif and Partners ENGINEERS**  
200 BAYVIEW AVE. SUITE 200  
SCARBOROUGH, ONTARIO M1S 5B7  
TEL: 416-441-2727  
FAX: 416-441-2727  
E-MAIL: jahromsky@jap.ca

NO.	REVISION / COMMENTS	DATE
1	ISSUED FOR PERMIT	2014/11/02
2	REVISED FOR COMMENTS	2014/11/02
3	REVISED FOR COMMENTS	2014/11/02
4	REVISED FOR COMMENTS	2014/11/02
5	REVISED FOR COMMENTS	2014/11/02
6	REVISED FOR COMMENTS	2014/11/02
7	REVISED FOR COMMENTS	2014/11/02
8	REVISED FOR COMMENTS	2014/11/02
9	REVISED FOR COMMENTS	2014/11/02
10	REVISED FOR COMMENTS	2014/11/02
11	REVISED FOR COMMENTS	2014/11/02
12	REVISED FOR COMMENTS	2014/11/02
13	REVISED FOR COMMENTS	2014/11/02
14	REVISED FOR COMMENTS	2014/11/02
15	REVISED FOR COMMENTS	2014/11/02
16	REVISED FOR COMMENTS	2014/11/02