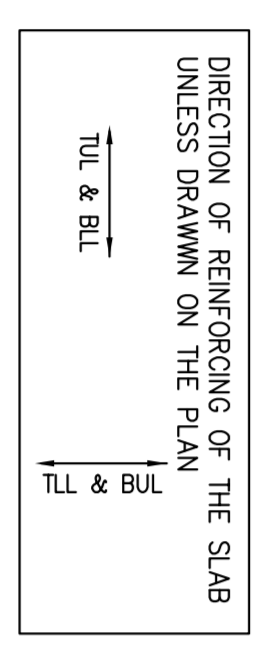


4TH FLOOR FRAMING PLAN

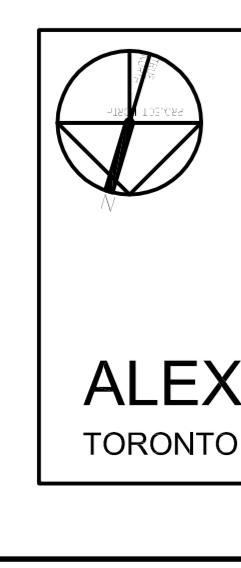
SCALE 1:100

- TOP OF SLAB IS AT ELEVATION AS SHOWN ON ARCH. DRAWINGS EXCEPT AS CROSSED AND NOTED ON PLAN.
- CONCRETE STRENGTH AT 28 DAYS SHALL BE:
 - FOR WALLS AND COLUMNS SEE SCHEDULE FOR EXT. SLABS
 - FOR INT. SLABS 35 MPa
 - FOR DECKING 25 MPa
 CONCRETE EXPOSED TO ELEMENTS SHALL BE 35 MPa WITH EXT. TO BE FINISHED AS NOTED.
- FLOOR SLABS ARE DESIGNED FOR FOLLOWING LOADING CONDITIONS:

	S.U.D.	L.L.
STAIRS & BALCONIES	0.50 kPa	4.80 kPa
LOOKERS & STORAGE *	1.30 kPa	4.80 kPa
RESIDENTIAL	1.30 kPa	1.9 kPa
TOILETS	1.30 kPa	2.40 kPa
TERRACES	5.0 kPa	4.80 kPa



- MINIMUM YIELD STRESS FOR REINFORCING STEEL SHALL BE 400 MPa.
- TEMPERATURE REINFORCING FOR: 200 SLAB IS 100%20.
- NO OPENINGS LARGER THAN 300mm x 300mm ARE ALLOWED IN SLAB OTHER THAN THOSE SHOWN ON DRAWINGS.
- SEE TYPICAL DETAILS ON DRAWINGS S-001 TO S-005.
- SEE GENERAL NOTES ON DRAWING S-001.
- REFERS TO ARCH. DRAWINGS FOR STAIRS OF SLAB.
- FOR COLUMN & WALL SCHEDULE SEE DRAWINGS S-201 TO S-208.
- CORONAUTE BEAM DEPTH AT DOOR OPENINGS WITH ARCH. DRAWINGS.
- EXTEND TEMP. REIN- TO END OF BALCONES/OVERHANGS.
- TOP BARS TERMINATING AT EDGE OF SLAB TO HAVE 180° HOOK.



ALEXANDRA PARK - BLOCK 11
TORONTO, ONTARIO

FIRST FLOOR ELEV. 80.00m

NO.	REVISION / COMMENTS	DATE
1	ISSUED FOR PERMIT	2014.03.04
2	REVISED FOR COMMENTS	2014.03.04
3	REVISED FOR COMMENTS	2014.03.04
4	REVISED FOR COMMENTS	2014.03.04
5	REVISED FOR COMMENTS	2014.03.04
6	REVISED FOR COMMENTS	2014.03.04
7	REVISED FOR COMMENTS	2014.03.04
8	REVISED FOR COMMENTS	2014.03.04
9	REVISED FOR COMMENTS	2014.03.04
10	REVISED FOR COMMENTS	2014.03.04
11	REVISED FOR COMMENTS	2014.03.04
12	REVISED FOR COMMENTS	2014.03.04
13	REVISED FOR COMMENTS	2014.03.04
14	REVISED FOR COMMENTS	2014.03.04
15	REVISED FOR COMMENTS	2014.03.04
16	REVISED FOR COMMENTS	2014.03.04

Jablonsky, Asif and Partners ENGINEERS
 5700 SHEPPARD AVENUE EAST
 SUITE 1000
 SCARBOROUGH, ONTARIO M1S 1T7
 TEL: 416-444-2727
 FAX: 416-444-2727
 E-MAIL: info@jablonsky.com