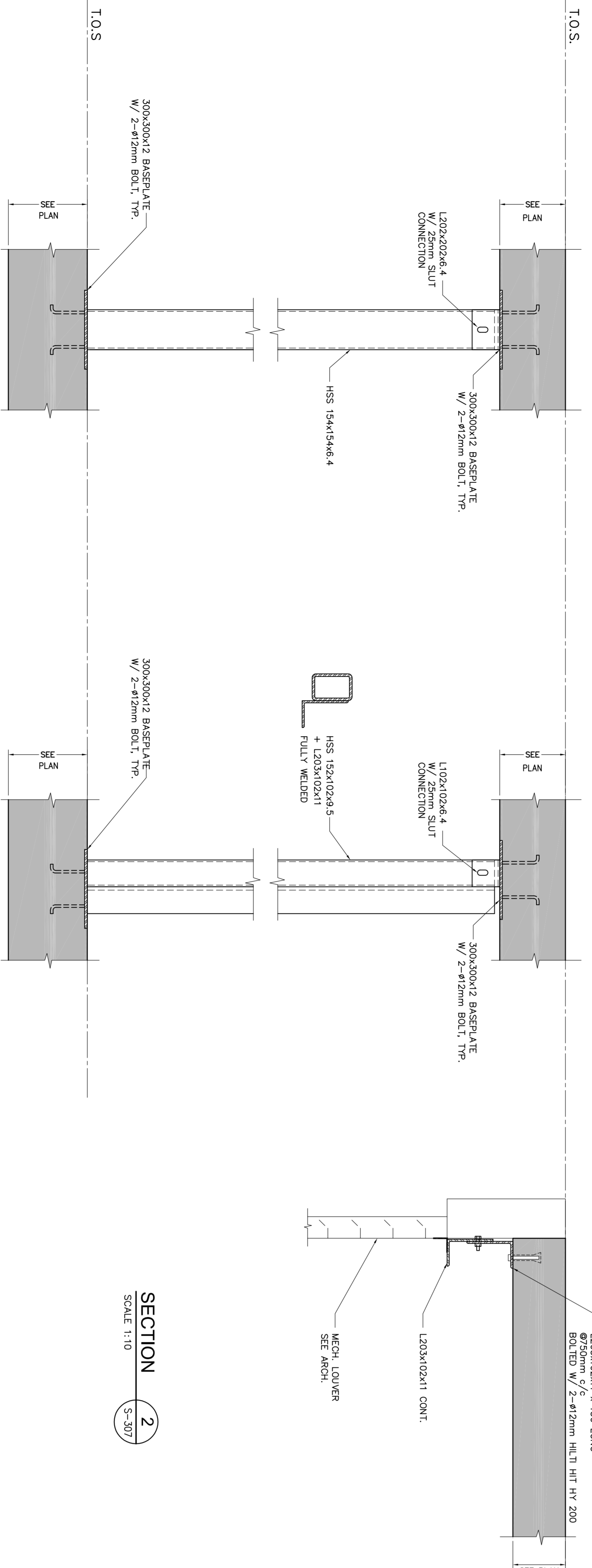


STEEL FRAMING FOR GLASS CANOPY AT SUITE ENTRANCE - SECTION VIEW

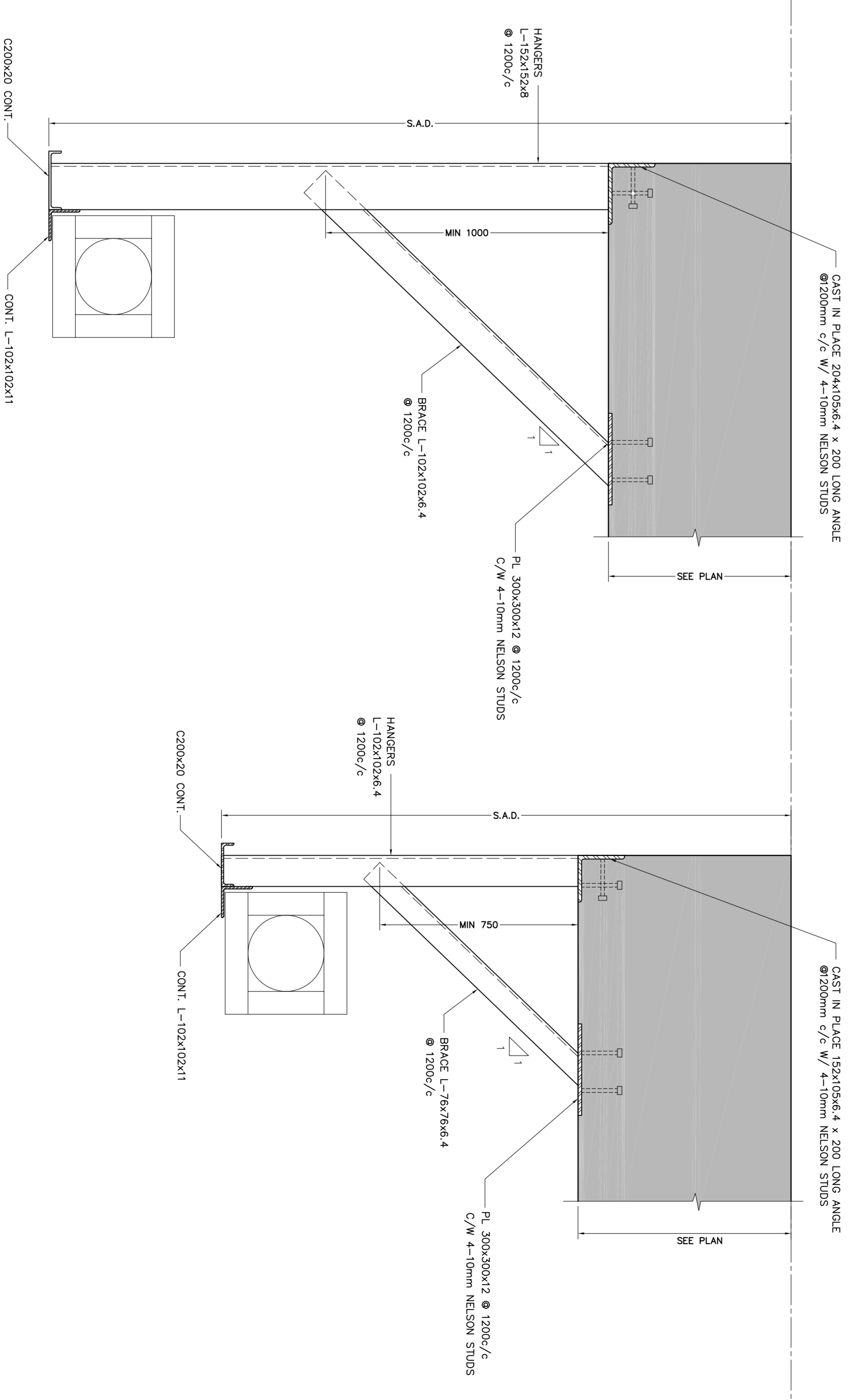
STEEL FRAMING FOR GLASS CANOPY AT SUITE ENTRANCE - FRONT VIEW

STEEL FRAMING FOR GLASS CANOPY AT BIKE STORAGE - SECTION VIEW

SECTION 1
SCALE 1:10



SECTION 2
SCALE 1:10



SECTION 3
SCALE 1:10

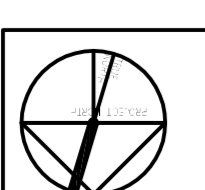
SECTION 4
SCALE 1:10

TYPICAL STEEL POST ON EACH SIDE OF THE OVER HEAD DOORS, TYP.

TYPICAL STEEL POST ON EACH SIDE OF THE MECH. LOUVER AT NORTH/EAST CORNER OF GROUND FLOOR

OVERHEAD DOOR AT LOADING DUCK

OVERHEAD DOOR AT LOADING DUCK



ALEXANDRA PARK - BLOCK 11
TORONTO, ONTARIO

NO.	REVISION	DATE
1	ISSUED FOR PERMIT	2014/03/03
2	ISSUED FOR CONSTRUCTION	2014/03/03
3	ISSUED FOR CONSTRUCTION	2014/03/03
4	ISSUED FOR CONSTRUCTION	2014/03/03
5	ISSUED FOR CONSTRUCTION	2014/03/03

Jablonsky, Asif
and Partners
ENGINEERS
 509 WILSON AVE. SUITE 200
 TORONTO, ONT. M5G 1S2
 TEL: 416-464-2727
 FAX: 416-464-2727
 E-MAIL: jablonsky@jps.ca

Professional Engineer
 P. Eng. Asif Jablonsky
 No. 13037
 Ontario

DATE: 11/10
 DRAWN BY: M.M. KHAN
 CHECKED BY: M.M. KHAN
 DATE: MARCH 2014

SECTIONS & DETAILS

S-307

- REFER TO THE ARCH. DRAWINGS FOR LOCATION AND DIMENSIONS
 - STRUCTURAL STEEL SHALL BE G40.21-350W FOR ALL STEEL
 - STRUCTURAL STEEL SHALL BE HOT DIP GALVANIZED WHERE EXPOSED TO WEATHER.