

P1 PARKING LEVEL FRAMING PLAN

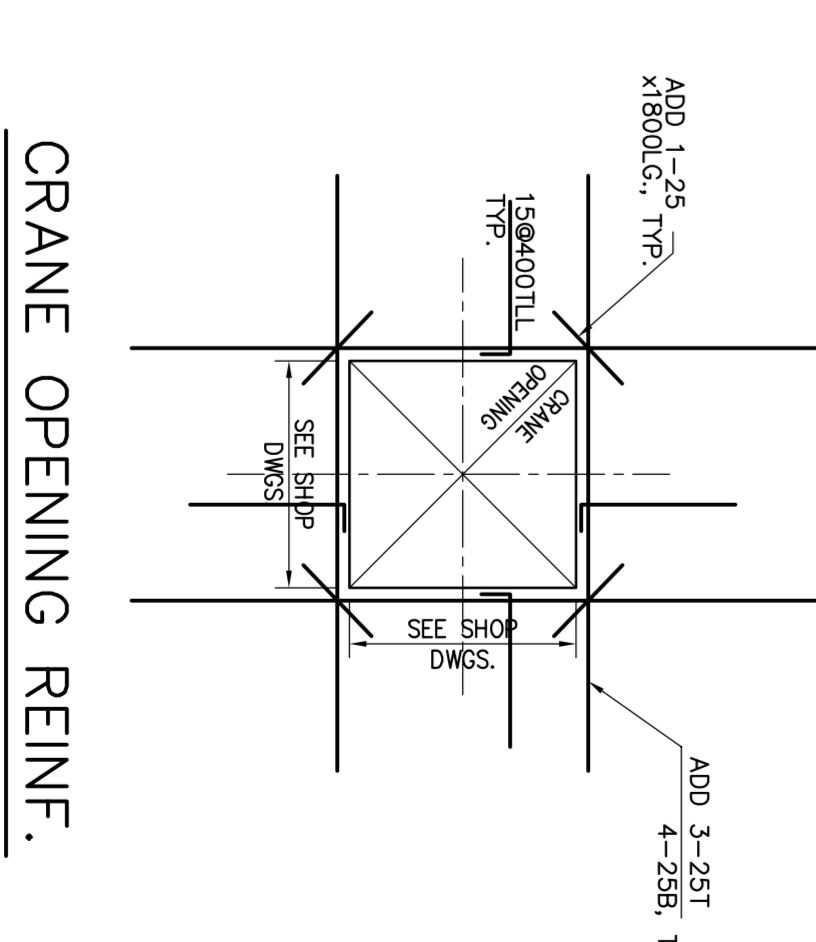
SCALE 1 : 100

- TOP OF SLAB IS AT ELEVATION AS SHOWN ON ARCH. DRAWINGS EXCEPT FOR CROSSERS AND NOTED ON PLAN.
- FOR U/L LOADS SEE GENERAL NOTES ON DRAWINGS S-101 EXCEPT AS NOTED.
- FOR S/L LOADS AND CROSSERS FOR ELEVATION LOADS SEE DRAWINGS S-101.
- MINIMUM YIELD STRESS FOR REINFORCING STEEL SHALL BE 400 MPa.
- TEMPERATURE REINFORCEMENT FOR : 230 SLAB IS 1000X300 300 SLAB IS 1000X300 200 SLAB IS 1000X300
- NO OPENINGS LARGER THAN 300X300 ARE ALLOWED IN SLAB OTHER THAN CROSSERS.
- SEE COLUMN & WALL SCHEDULE ON DRAWINGS S-101 TO S-106.
- SEE TYPICAL DETAILS ON DRAWINGS S-101 TO S-106.
- SEE GENERAL NOTES ON DRAWINGS S-101.
- SEE ARCH. DRAWINGS FOR REINFORCING STEEL IN RAIRS AND PARKING SLAB.
- MINIMUM COVER FOR TOP BARS AND DOWN FOR BOTTOM BARS SHALL BE AS SHOWN ON ARCH. DWGS. & MECH. DWGS.
- SEE ARCHITECTURAL DRAWINGS FOR EACH SLAB STAGES.
- FOR OPENINGS EXACT LOCATION & DIMENSION SEE ARCH. DWGS. & MECH. DWGS.

3. CONCRETE STRENGTH AT 28 DAYS SHALL BE 35 MPa. CONCRETE EXPOSED TO DEGREE 85 TO BE ENRICHED AS WITH APPROVED CORROSION INHIBITOR ADDED AT A MINIMUM RATE OF 1.00 LITRES PER 170 CUM. M³ OF CONCRETE.

MARK	WIDTH	DEPTH	REINFORCEMENT		SPACING		REMARKS
			CONT.	ADDED	EACH END	TYPE	
BM-1	300	1600	3-25	2-20	10	180/20, 90/40	154000 HEF
BM-2	300	1600	3-25	2-20	10	180/20, 90/40	154000 HEF
BM-3	300	1800	3-25	2-20	10	180/20, 90/40	154000 HEF
BM-4	1000	500	6-30	6-20	15	180/20, 90/40	154000 HEF
BM-5	1000	500	6-30	6-20	15	180/20, 90/40	154000 HEF
BM-6	1000	500	6-30	6-20	15	180/20, 90/40	154000 HEF
BM-7	1000	500	6-30	6-20	15	180/20, 90/40	154000 HEF
BM-8	1000	500	6-30	6-20	15	180/20, 90/40	154000 HEF
BM-9	1000	500	6-30	6-20	15	180/20, 90/40	154000 HEF
BM-10	300	1000	3-25	2-20	10	180/20, 90/40	154000 HEF
BM-11	300	1000	3-25	2-20	10	180/20, 90/40	154000 HEF
BM-12	300	1000	3-25	2-20	10	180/20, 90/40	154000 HEF
BM-13	300	1000	3-25	2-20	10	180/20, 90/40	154000 HEF

* TO BE COMPLETED ON SITE



FOR ADDITIONAL REINFORCING SEE TYPICAL DETAILS



ALEXANDRA PARK - BLOCK 11
TORONTO, ONTARIO

NO.	REVISION	DATE
1	ISSUED FOR PERMIT	2014/03/14
2	REVISION FOR COMMENTS	2014/03/14
3	ISSUED FOR PERMIT	2014/03/14
4	REVISION FOR COMMENTS	2014/03/14
5	ISSUED FOR PERMIT	2014/03/14
6	REVISION FOR COMMENTS	2014/03/14
7	ISSUED FOR PERMIT	2014/03/14
8	REVISION FOR COMMENTS	2014/03/14

Joblonsky, Asst
Civil Engineers
1100 SHEPPARD AVENUE EAST
SUITE 100
SCARBOROUGH, ONTARIO M1B 2Y3
Tel: 416-444-2727
Fax: 416-444-2727
E-mail: info@joblonsky.com