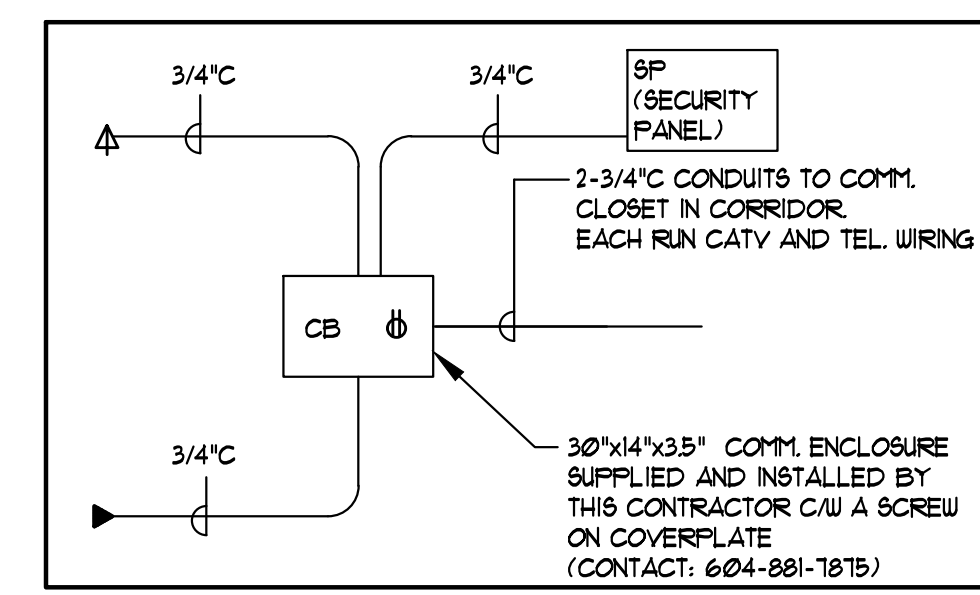
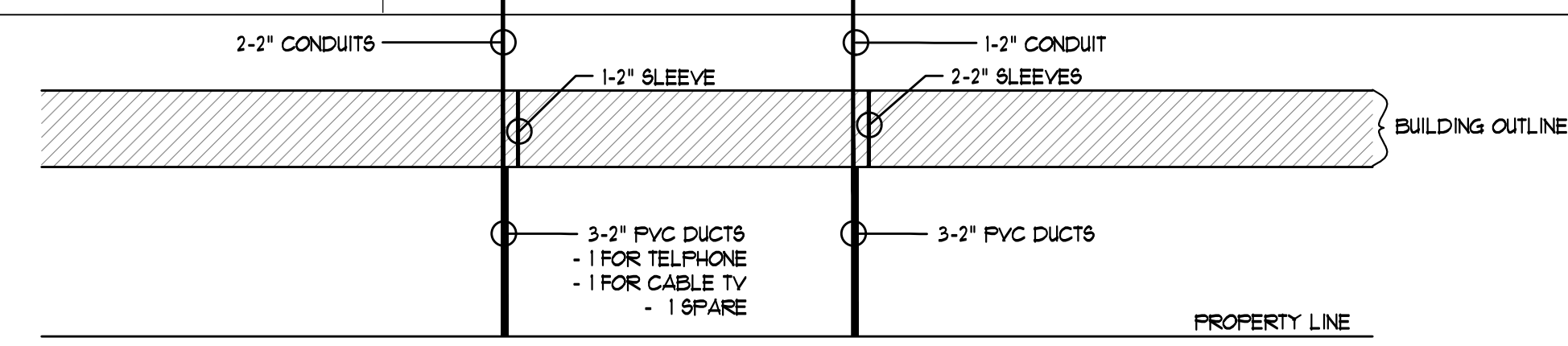


COMMUNICATION AND SECURITY RISER DIAGRAM

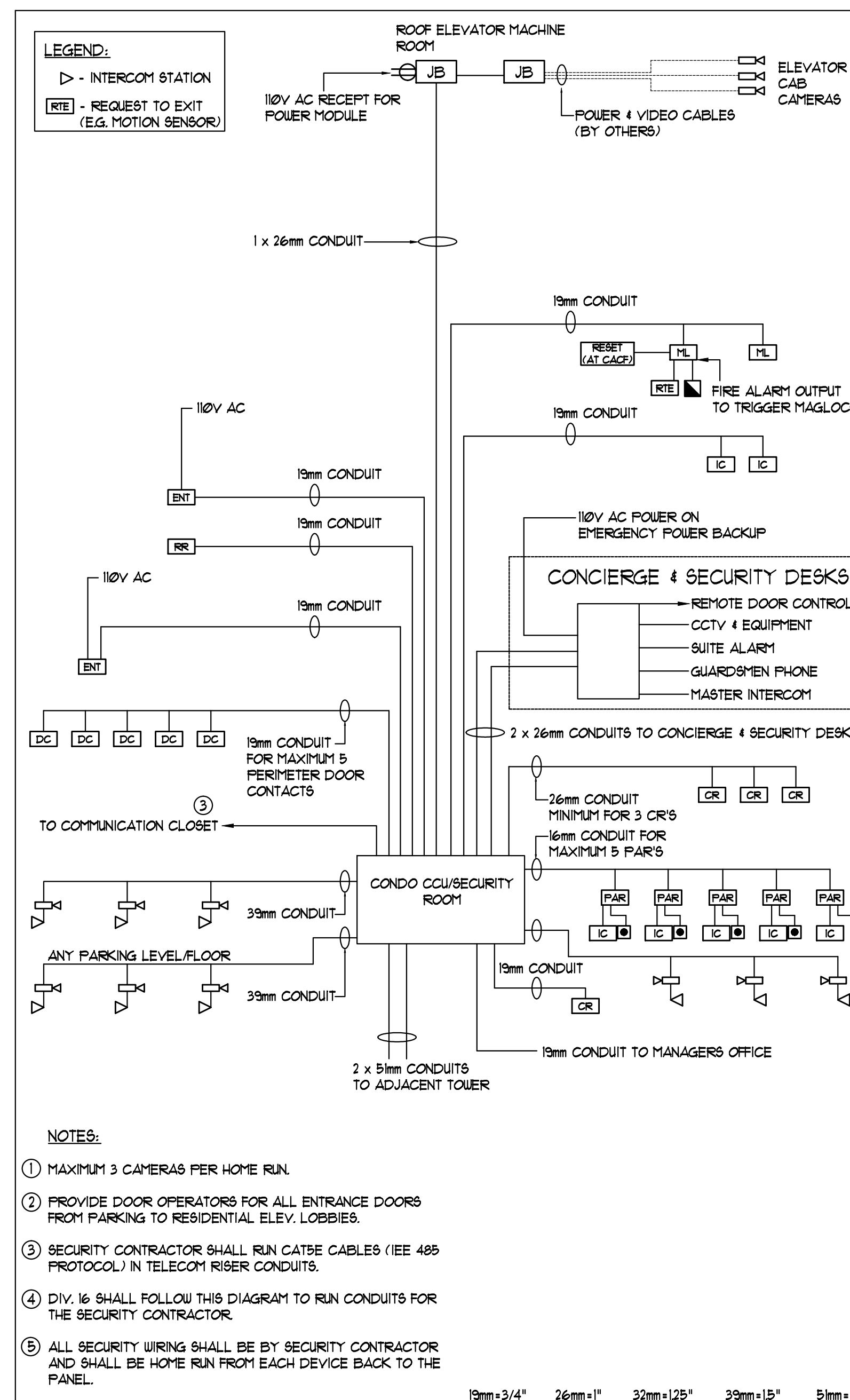


TYPICAL SUITE COMMUNICATION CONNECTION DIAGRAM  
(REFER TO DETAIL 'S ON DWG E-31 FOR INSTALLATION OF COMMUNICATION BOX)

- GENERAL NOTES:
- COMMUNICATION RISER SHALL BE RUN IN TOWER 101 BSKINE NORTH & SOUTH ELECTRICAL CLOSET.
  - EACH SUITE IS FED WITH TWO CONDUITS, ONE FOR TELEPHONE AND CABLE TV, AND THE OTHER IS A SPARE.
  - PROVIDE DEDICATED TELEPHONE LINE FOR ELEVATOR SYSTEM.
  - PROVIDE ELECTRICAL PANEL 10-SCV FOR CCU ROOM USE COMPLETE WITH A MINIMUM 60A 120/208V EMERGENCY FEEDER.
  - CONDUITS NOT BEING USED SHALL BE CALKED AND SEALED. ALL SLEEVES PASSING THROUGH FIRE SEPARATIONS SHALL BE FIRE STOPPED.
  - SECURITY CONTRACTOR RUN CAT5E CABLE IN THE SAFE CONDUIT AS TELECOM CABLE.



SUITE DISTRIBUTION RISER DIAGRAM



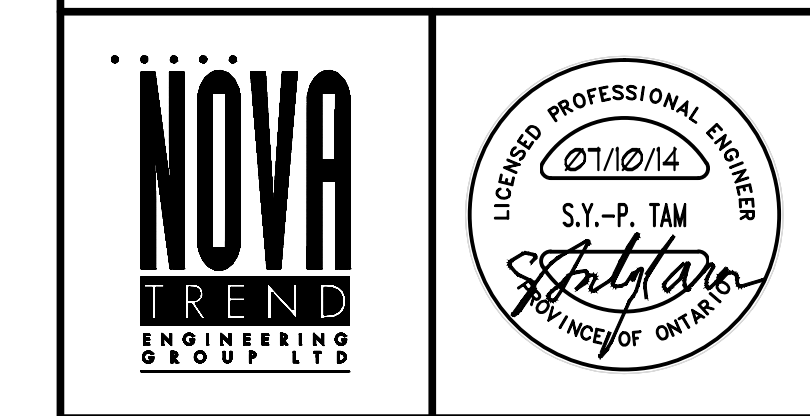
SECURITY CONDUIT CONNECTION DIAGRAM

ELECTRICAL LEGEND

LIGHTING	
[Symbol]	FLUORESCENT LIGHT FIXTURE TYPE AS INDICATED
[Symbol]	NIGHT LIGHT OR LIGHT CONNECTED TO EMERGENCY POWER
[Symbol]	CEILING MOUNTED WALL MOUNTED LIGHT FIXTURE, INSCRIBED LETTER DENOTES TYPE
[Symbol]	POLE MOUNTED LIGHT FIXTURE, INSCRIBED LETTER DENOTES TYPE
[Symbol]	CEILING MOUNTED LIGHT OUTLET
[Symbol]	TRACK LIGHT
[Symbol]	STRIP LIGHT
[Symbol]	UNDER CABINET FLUORESCENT LIGHT FIXTURE
[Symbol]	CEILING MOUNTED WALL MOUNTED EXIT SIGN
[Symbol]	INDIVIDUAL EMERGENCY LIGHT REMOTE HEAD
[Symbol]	EMERGENCY BATTERY PACK
[Symbol]	OCCUPANCY SENSOR POWER PACKS
[Symbol]	SINGLE/THREE POLE, SINGLE/TWO/THREE THRU LOCAL SWITCH RESPECTIVELY
[Symbol]	3-1/4" (3" x 4" x 1/2") DENOTES 3-WAY 4-WAY LIGHT, OTHER SWITCHED LIGHT RESPECTIVELY
[Symbol]	MASTER LIGHTING SWITCH OFF SWITCH
[Symbol]	SENSOR WALL SWITCH FIRE SELF POWERED
[Symbol]	OCCUPANCY SENSOR CEILING MOUNTED
POWER	
[Symbol]	REGULAR DUPLEX RECEPTACLE
[Symbol]	DUPLEX RECEPTACLE GROUND FAULT INTERRUPT
[Symbol]	3-1/2" 1-1/2" DUPLEX RECEPTACLE
[Symbol]	SINGLE RECEPTACLE TYPE AND CONFIGURATION AS SPECIFIED FOR DRYER
[Symbol]	CONNECTION FOR OVERSICCOOP
[Symbol]	ABOVE COUNTER DEVICE
[Symbol]	CEILING MOUNTED DEVICES
[Symbol]	FLOOR MOUNTED DEVICES
[Symbol]	DISCONNECT SWITCH NON-FUSED
[Symbol]	DISCONNECT SWITCH FUSED
[Symbol]	COMBINATION STARTER
[Symbol]	FRACTIONAL MOTOR/FAN DIRECT CONNECTION
[Symbol]	DIRECT CONNECTION SINGLE PHASE
[Symbol]	DIRECT CONNECTION THREE PHASE
[Symbol]	THERMOSTAT
[Symbol]	DRYER SENSOR
[Symbol]	HEAT TRACE
[Symbol]	ELECTRICAL HEATER
[Symbol]	ELECTRICAL PANEL / SECURITY PANEL
TELECOMMUNICATION	
[Symbol]	TV/CABLE OUTLET
[Symbol]	TELEPHONE OUTLET
[Symbol]	TELEPHONE CABLE (MULTI-PORT OUTLET)
[Symbol]	DATA OUTLET
[Symbol]	DATA/TELEPHONE OUTLET
[Symbol]	IN-SITE TELECOM BOX/CU RECEPTACLE
[Symbol]	LIFT LOCATION
[Symbol]	MUSIC SPEAKER / VOLUME CONTROL
[Symbol]	RADIO RECEIVER
SECURITY	
[Symbol]	INTERCOM / INTERPHONE
[Symbol]	INTERCOM WITH CAMERA
[Symbol]	PANIC BUTTON / PANIC INTERCOM STATION
[Symbol]	CARD READER
[Symbol]	AUTOMATIC RELEASE CARD ACCESS/RADIO RECEIVER
[Symbol]	MAGLOCK
[Symbol]	ELECTRIC STRIKE
[Symbol]	MAGLOCK
[Symbol]	DOOR CONTACT / WINDOW CONTACT
[Symbol]	AUTOMATIC DOOR OPERATOR
[Symbol]	MOTION DETECTOR
[Symbol]	PUSH BUTTON
[Symbol]	SECURITY CAMERA
LIFE SAFETY	
[Symbol]	FIRE ALARM SMOKE DETECTOR
[Symbol]	SMOKE ALARM
[Symbol]	FIRE ALARM DUCT TYPE SMOKE DETECTOR
[Symbol]	FIRE ALARM HEAT DETECTOR
[Symbol]	FIXED TEMP 85 °C SMOKE HEAT DETECTOR
[Symbol]	MOISTURE PROOF HEAT DETECTOR
[Symbol]	CO ALARM
[Symbol]	COMBINATION SMOKE & CO ALARM
[Symbol]	CO SENSOR / NO SENSOR
[Symbol]	FIRE ALARM MANUAL PULL STATION
[Symbol]	PREPAREDNESS HANGERS
[Symbol]	FIRE ALARM STROBE/ORN WALL MTD.
[Symbol]	FIRE ALARM M-HORN WALL MTD.
[Symbol]	FIRE ALARM SPEAKER/STROBE CEILING MTD.
[Symbol]	FIRE ALARM SPEAKER CEILING MTD.
[Symbol]	FIRE ALARM MANICULATOR PANEL
[Symbol]	FIRE ALARM CONTROL PANEL

REV	NO.	DESCRIPTION	DATE
01	1	ISSUED FOR PERIT	05/11/14
02	1	ISSUED FOR PERIT	05/11/14
03	1	ISSUED FOR PERIT	05/11/14

REVISIONS  
CONTRACTOR MUST CHECK AND VERIFY ALL DIMENSIONS AND CONDITIONS ON THE JOB AND REPORT DISCREPANCIES TO THE ENGINEER BEFORE PROCEEDING WITH THE WORK. THIS DRAWING IS THE PROPERTY OF SFP ENGINEERS AND WILL BE FORGED FOR THE PROTECTION OF THE WORK. DRAWINGS ARE NOT TO BE SCALED.



1715 West Beaver Creek Road, Unit 31  
Richmond Hill, Ontario L4B 3M1  
Tel: 905-882-5445  
Fax: 905-882-5441  
Email: info@novatrends.com

DRAWING TITLE: **SDP, COMMUNICATION & SECURITY RISER DIAGRAM**

PROJECT TITLE: **ALEXANDRA PARK**

DATE: FEB, 13	PROJECT NUMBER: 1313	DRAWING NUMBER: E-31
---------------	----------------------	----------------------