

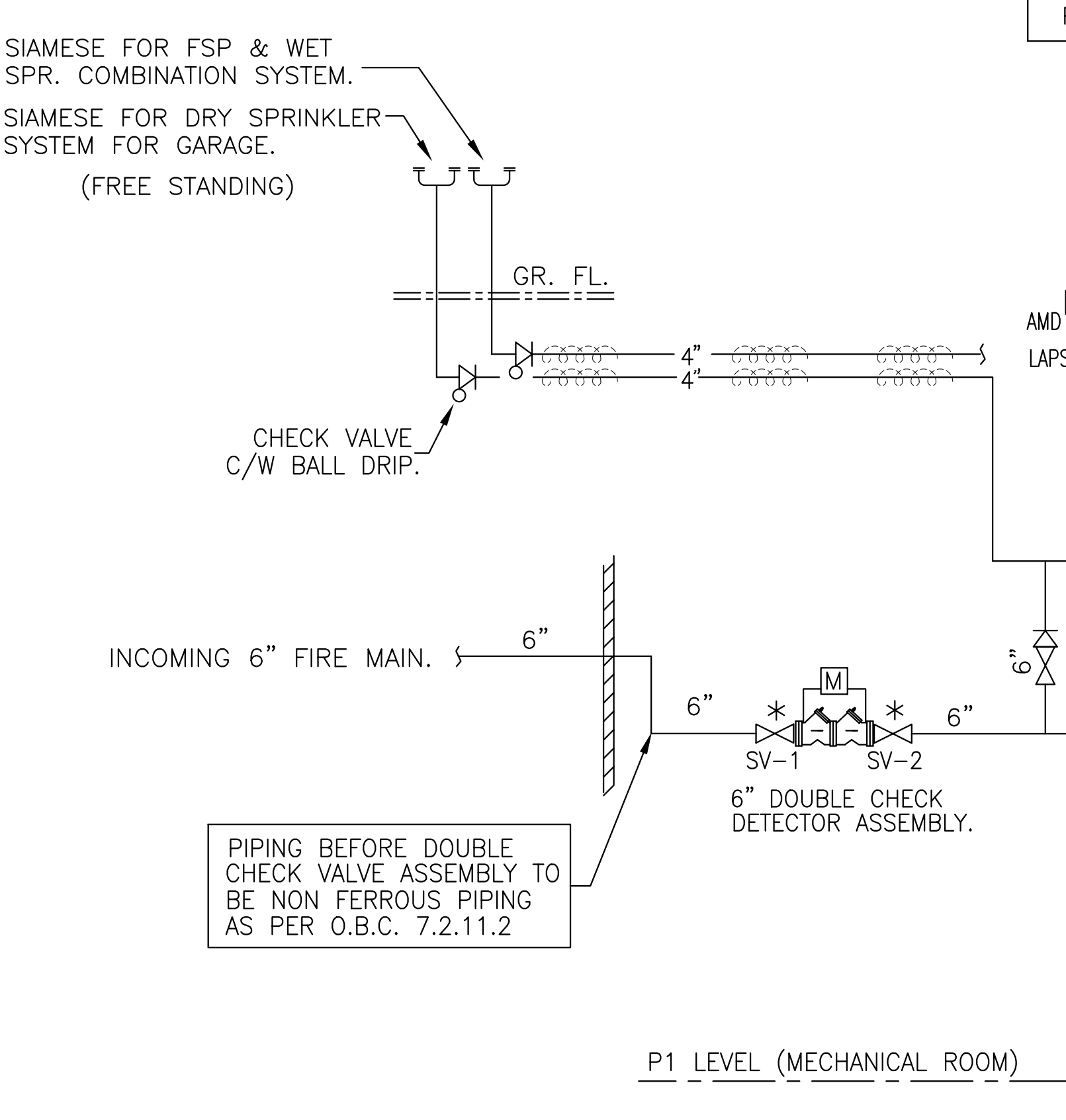
FIRE PROTECTION SYSTEM PRESSURE SWITCH SCHEDULE		
PS-4	LOW PRESSURE MONITOR SWITCH	SPRINKLER ROOM
PS-5	PRESSURE SWITCH FOR P-1 PARKING DRY SPR. SYSTEM	SPRINKLER ROOM
PS-6	PRESSURE SWITCH FOR P-2 PARKING DRY SPR. SYSTEM	SPRINKLER ROOM
PS-7	PRESSURE SWITCH FOR JOCKEY PUMP	SPRINKLER ROOM
PS-8	PRESSURE SWITCH FOR FIRE PUMP	SPRINKLER ROOM
PS-9	PRESSURE SWITCH FOR COMBINATION FEED MAIN	SPRINKLER ROOM
LAPS-1	LOW AIR PRESSURE SWITCH	SPRINKLER ROOM
LAPS-2	LOW AIR PRESSURE SWITCH	SPRINKLER ROOM

FIRE PROTECTION SYSTEM FLOW SWITCHES SCHEDULE ALL LOW PRESSURE SWITCHES TO BE CONNECTED TO ANNUNCIATION PANEL		
ZONE	DESCRIPTION	LOCATION
FS-21	SPR. SYSTEM ON GROUND LEVEL	GARBAGE ROOM (170)
FS-22	SPR. SYSTEM IN GARBAGE ROOM	GARBAGE ROOM (170)
FS-23	SPR. RISER IN GARBAGE CHUTE	GARBAGE ROOM (170)
FS-24	SPR. SYSTEM IN TOWNHOUSE AT NORTHEAST CORNER	GARBAGE ROOM (170)

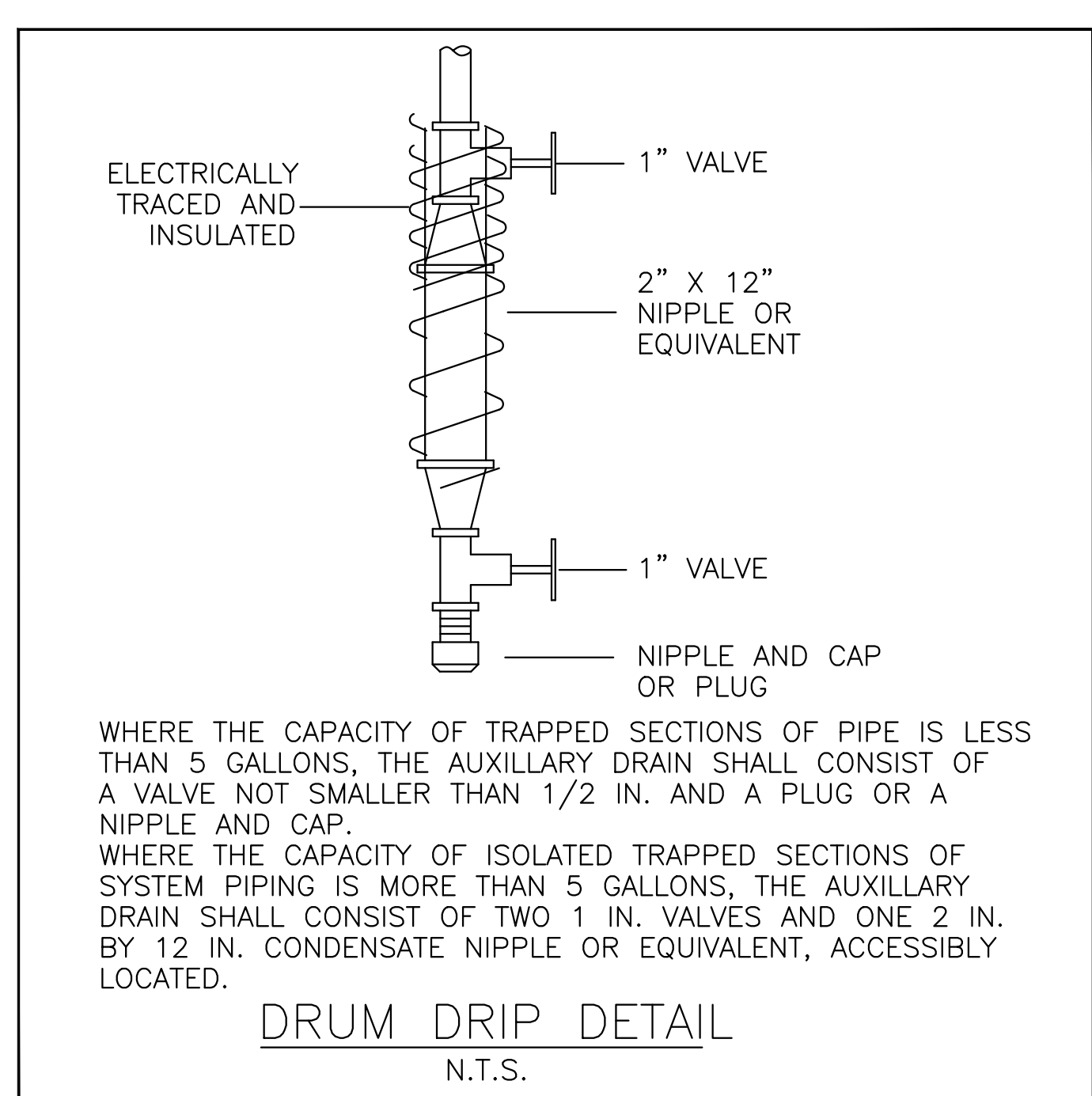
FS-25	SPR. SYSTEM ON 2ND LEVEL	2ND LEVEL (STAR G)
FS-26	SPR. SYSTEM ON 3RD LEVEL	3RD LEVEL (STAR F)
FS-27	SPR. SYSTEM ON 4TH LEVEL	4TH LEVEL (STAR G)
FS-28	SPR. SYSTEM ON 5TH LEVEL	5TH LEVEL (STAR F)
FS-29	SPR. SYSTEM ON 6TH LEVEL	6TH LEVEL (STAR G)
FS-30	SPR. SYSTEM ON 7TH LEVEL	7TH LEVEL (STAR F)
FS-31	SPR. SYSTEM ON 8TH LEVEL	8TH LEVEL (STAR G)
FS-32	SPR. SYSTEM ON 9TH LEVEL	9TH LEVEL (STAR F)
FS-33	SPR. SYSTEM ON 10TH LEVEL	10TH LEVEL (STAR G)
FS-34	SPR. SYSTEM ON 11TH LEVEL	11TH LEVEL (STAR F)
FS-35	SPR. SYSTEM ON 12TH LEVEL	12TH LEVEL (STAR G)
FS-36	SPR. SYSTEM ON 13TH LEVEL	13TH LEVEL (STAR F)
FS-37	SPR. SYSTEM ON 14TH LEVEL	14TH LEVEL (STAR G)
FS-38	SPR. SYSTEM ON MECH. PENHOUSE	PENHOUSE
FS-39	SPR. SYSTEM IN MECH. P.H. ON 9TH FL.	MECH. RM ON 9TH FL.

KEY NOTES:

- CONNECT ALL SV'S, PS'S, PS'S AND OTHER DEVICES INDICATED ON THE SCHEDULES ABOVE TO CACF BY ADDRESSABLE CLASS A LOOPS.
- DIV. 16 TO INSTALL FLOW ZONES AS PER FLOW SWITCH SCHEDULE SHOWN ON SPRINKLER DRAWINGS.



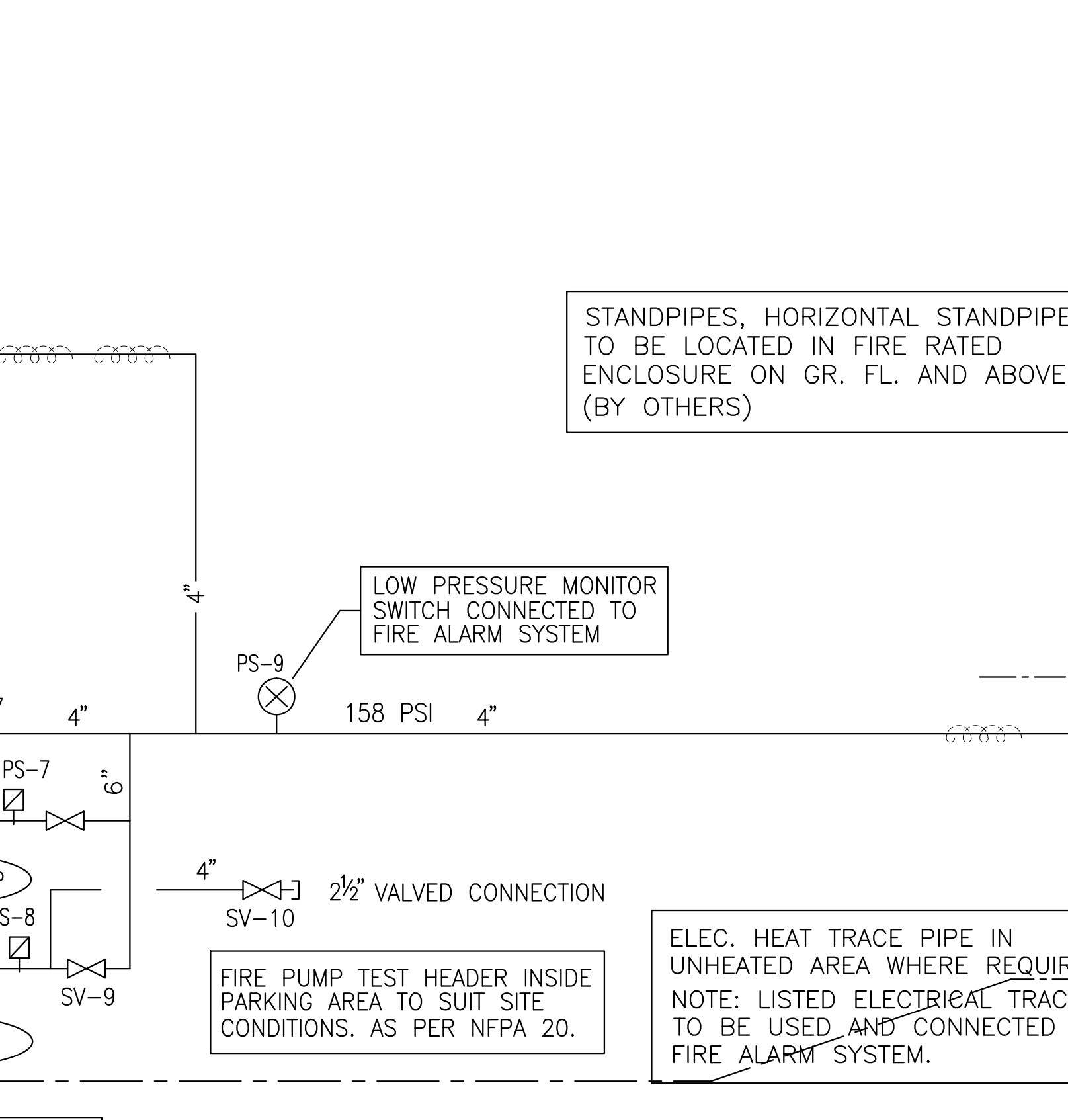
FIRE PROTECTION SYSTEM SCHEMATIC
N.T.S.



FIRE PROTECTION SYSTEM SUPERVISED VALVES SCHEDULE		
ZONE	DESCRIPTION	LOCATION
SV-1	INCOMING FIRE MAIN ISOLATION	SPRINKLER ROOM
SV-2	INCOMING FIRE MAIN ISOLATION	SPRINKLER ROOM
SV-3	DRY SPR. SYSTEM HEADER MAIN ISOLATION	SPRINKLER ROOM
SV-4	P-1 PARKING DRY SPR. SYSTEM	SPRINKLER ROOM
SV-5	P-2 PARKING DRY SPR. SYSTEM	SPRINKLER ROOM
SV-6	FIRE PUMP BY-PASS	SPRINKLER ROOM
SV-7	FIRE PUMP BY-PASS	SPRINKLER ROOM
SV-8	FIRE PUMP SUCTION	SPRINKLER ROOM
SV-9	FIRE PUMP DISCHARGE	SPRINKLER ROOM
SV-10	FIRE PUMP TEST HEADER	SPRINKLER ROOM
SV-11	FIRE STANDPIPE RISER-P1	P-1 PARKING GARAGE
SV-12	FIRE STANDPIPE RISER-P2	P-1 PARKING GARAGE
SV-13	FIRE STANDPIPE RISER-4 & P3	P-1 PARKING GARAGE
SV-14	FIRE STANDPIPE RISER-1	P-1 PARKING GARAGE
SV-15	FSP & SPR. COMBINATION RISER (FSP-2)	P-1 PARKING GARAGE
SV-16	FIRE STANDPIPE RISER-3	P-1 PARKING GARAGE

KEY NOTES:

- CONNECT ALL SV'S, PS'S, PS'S AND OTHER DEVICES INDICATED ON THE SCHEDULES ABOVE TO CACF BY ADDRESSABLE CLASS A LOOPS.
- DIV. 16 TO INSTALL FLOW ZONES AS PER FLOW SWITCH SCHEDULE SHOWN ON SPRINKLER DRAWINGS.



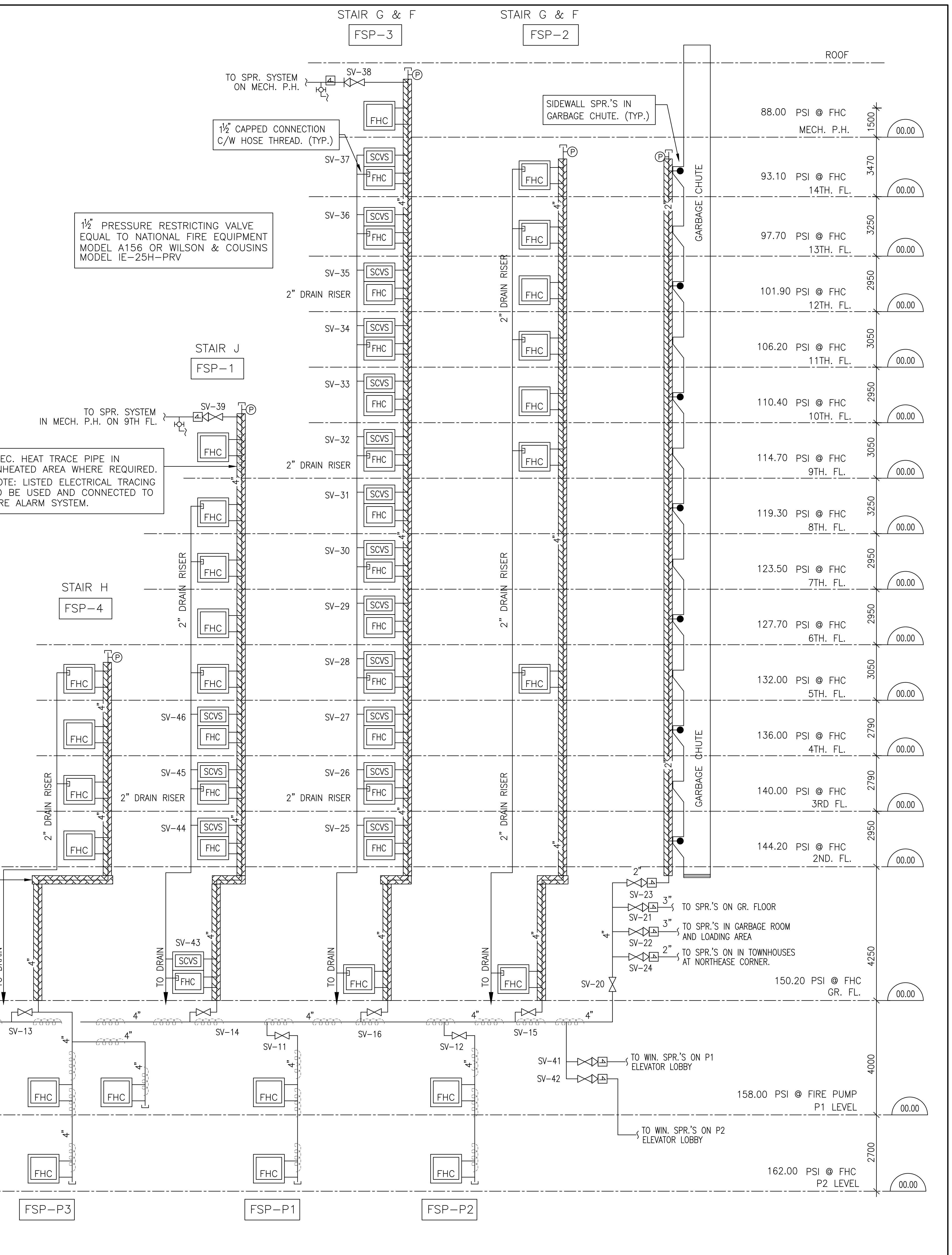
FIRE PROTECTION SYSTEM SUPERVISED VALVES SCHEDULE
N.T.S.

PUMPS SCHEDULE - FIRE PROTECTION						
PUMP NO.	GPM	HEAD	HP	V./~A	RPM	MAKE
FIRE PUMP	400 GPM	85 PSI	40 HP	575/3/60	3560 RPM	ARMSTRONG OR SIMILAR
JOCKEY PUMP	10 GPM	90 PSI	1 HP	575/3/60	3600 RPM	ARMSTRONG OR SIMILAR

NOTE: ELECTRICAL SPECIFICATIONS FOR FIRE PUMP TO BE CONFIRMED BY ELECTRICAL CONSULTANT.

ANCILLARY CIRCUITS (OUTPUT TO START/SHUTDOWN FANS & DEVICES)	
CR1	AHU-1 STOP (AUTOMATIC ON FIRE ALARM INITIATION & BY MANUAL SW. AT CACF)
CR2	GF-1 START (AUTOMATIC ON FIRE ALARM INITIATION & BY MANUAL SW. AT CACF)
CR3	GF-2 START (AUTOMATIC ON FIRE ALARM INITIATION & BY MANUAL SW. AT CACF)
CR4	EF-11 START (AUTOMATIC ON FIRE ALARM INITIATION & BY MANUAL SW. AT CACF)
CR5	EF-18 START (AUTOMATIC ON FIRE ALARM INITIATION & BY MANUAL SW. AT CACF)
CR6	HOLD OPEN DEVICES
CR7	CACF SIGN
CR8	FIRE DAMPERS (AUTOMATIC ON FIRE ALARM INITIATION)
CR9-CR13	SPARE (AUTOMATIC ON FIRE ALARM INITIATION & BY MANUAL SW. AT CACF)

TROUBLE PANEL			
No.	ALARM	DESCRIPTION	LOCATION
1	FIRE PUMP RUNNING		P2 SPRINKLER ROOM
2	FIRE PUMP LOSS OF POWER		P2 SPRINKLER ROOM
3	FIRE PUMP LOW PRESSURE		P2 SPRINKLER ROOM
4	FIRE PUMP PHASE REVERSAL		P2 SPRINKLER ROOM
5	SPRINKLER ROOM LOW TEMP. (4°C ALARM)		P2 SPRINKLER ROOM
6	JOCKEY PUMP RUNNING		P2 SPRINKLER ROOM
7	SPRINKLER COMPRESSOR LOSS OF POWER		P2 SPRINKLER ROOM
8	STANDPIPE - ELEC. TRACED-LOSS OF POWER		P2 SPRINKLER ROOM
9	GENERATOR TROUBLE		P2 SPRINKLER ROOM
10	MAIN GAS VALVE OPEN		P2 SPRINKLER ROOM



PUMPS SCHEDULE - FIRE PROTECTION	
FIRE PUMP	400 GPM, 85 PSI, 40 HP, 575/3/60, 3560 RPM, ARMSTRONG OR SIMILAR
JOCKEY PUMP	10 GPM, 90 PSI, 1 HP, 575/3/60, 3600 RPM, ARMSTRONG OR SIMILAR

TROUBLE PANEL			
No.	ALARM	DESCRIPTION	LOCATION
1	FIRE PUMP RUNNING		P2 SPRINKLER ROOM
2	FIRE PUMP LOSS OF POWER		P2 SPRINKLER ROOM
3	FIRE PUMP LOW PRESSURE		P2 SPRINKLER ROOM
4	FIRE PUMP PHASE REVERSAL		P2 SPRINKLER ROOM
5	SPRINKLER ROOM LOW TEMP. (4°C ALARM)		P2 SPRINKLER ROOM
6	JOCKEY PUMP RUNNING		P2 SPRINKLER ROOM
7	SPRINKLER COMPRESSOR LOSS OF POWER		P2 SPRINKLER ROOM
8	STANDPIPE - ELEC. TRACED-LOSS OF POWER		P2 SPRINKLER ROOM
9	GENERATOR TROUBLE		P2 SPRINKLER ROOM
10	MAIN GAS VALVE OPEN		P2 SPRINKLER ROOM

FIRE ALARM ZONE SCHEDULE		
ZONE NO.	ZONE	DESCRIPTION
1	P-2 PARKING	
2	P-1 PARKING	
3	G/F PARKING RECYCLING AREA	
4	G/F PARKING GARBAGE & MOVING ROOM	
5	P-2 ELEVATOR LOBBY	
6	P-1 ELEVATOR LOBBY	
7	SPRINKLER ROOM (P-1)	
8	GARBAGE ROOM (G/F)	
9	MAIN ELECTRICAL ROOM (P-2)	
10	GENERATOR ROOM (P-1)	
11	CHILLER ROOM (P-2)	
12	AHU ROOM (P-2)	
13	G/F LOBBY	
14	G/F ELEVATOR LOBBY	
15	G/F AMENITY	
16	G/F CACF ROOM	
17	2/F RESIDENTIAL TO 14/F RESIDENTIAL	
18	STAIR #A SMOKE (P2 TO G/F)	
19	STAIR #B SMOKE (P2 TO G/F)	
20	STAIR #I SMOKE (G/F TO 9/F)	
21	STAIR #F SMOKE (G/F TO ELEV. MACH. RM.)	
22-53	STAIR #G SMOKE (G/F TO ELEV. MACH. RM.)	
54	STAIR #H SMOKE (G/F TO 5/F)	
55	STAIR #K SMOKE (14/F-ELEV. MACH. RM.)	
56-87	MECHANICAL PENTHOUSE (14/F)	
88	ROOF ELEVATOR MACHINE ROOM	
89	ELEVATOR "A" SHAFT & PIT	
90	ELEVATOR "B" SHAFT & PIT	
91	ELEVATOR "C" SHAFT & PIT	
92	SP #1 SMOKE	
93	SP #2 SMOKE	
94	AHU-1 DUCT SMOKE	
95	GARBAGE CHUTE	
96	LOADING DOCK (G/F)	
97	9/F AMENITY - EXTERIOR	
98-100	SPARES	

FIRE PROTECTION SYSTEM SUPERVISED VALVES SCHEDULE		
ZONE	DESCRIPTION	LOCATION
SV-1	INCOMING FIRE MAIN ISOLATION	SPRINKLER ROOM
SV-2	INCOMING FIRE MAIN ISOLATION	SPRINKLER ROOM
SV-3	DRY SPR. SYSTEM HEADER MAIN ISOLATION	SPRINKLER ROOM
SV-4	P-1 PARKING DRY SPR. SYSTEM	SPRINKLER ROOM
SV-5	P-2 PARKING DRY SPR. SYSTEM	SPRINKLER ROOM
SV-6	FIRE PUMP BY-PASS	SPRINKLER ROOM
SV-7	FIRE PUMP BY-PASS	SPRINKLER ROOM
SV-8	FIRE PUMP SUCTION	SPRINKLER ROOM
SV-9	FIRE PUMP DISCHARGE	SPRINKLER ROOM
SV-10	FIRE PUMP TEST HEADER	SPRINKLER ROOM
SV-11	FIRE STANDPIPE RISER-P1	P-1 PARKING GARAGE
SV-12	FIRE STANDPIPE RISER-P2	P-1 PARKING GARAGE
SV-13	FIRE STANDPIPE RISER-4 & P3	P-1 PARKING GARAGE
SV-14	FIRE STANDPIPE RISER-1	P-1 PARKING GARAGE
SV-15	FSP & SPR. COMBINATION RISER (FSP-2)	P-1 PARKING GARAGE
SV-16	FIRE STANDPIPE RISER-3	P-1 PARKING GARAGE
SV-20	SPR. RISER ISOLATION	GARBAGE ROOM (170)
SV-21	SPR. SYSTEM ON GROUND LEVEL	GARBAGE ROOM (170)
SV-22	SPR. SYSTEM IN GARBAGE ROOM	GARBAGE ROOM (170)
SV-23	SPR. RISER IN GARBAGE CHUTE	GARBAGE ROOM (170)
SV-24	SPR. SYSTEM IN TOWNHOUSE AT NORTHEAST CORNER	GARBAGE ROOM (170)
SV-25	SPR. SYSTEM ON 2ND LEVEL	2ND LEVEL (STAR G)
SV-26	SPR. SYSTEM ON 3RD LEVEL	3RD LEVEL (STAR F)
SV-27	SPR. SYSTEM ON 4TH LEVEL	4TH LEVEL (STAR G)
SV-28	SPR. SYSTEM ON 5TH LEVEL	5TH LEVEL (STAR F)
SV-29	SPR. SYSTEM ON 6TH LEVEL	6TH LEVEL (STAR G)
SV-30	SPR. SYSTEM ON 7TH LEVEL	7TH LEVEL (STAR F)
SV-31	SPR. SYSTEM ON 8TH LEVEL	8TH LEVEL (STAR G)
SV-32	SPR. SYSTEM ON 9TH LEVEL	9TH LEVEL (STAR F)
SV-33	SPR. SYSTEM ON 10TH LEVEL	10TH LEVEL (STAR G)
SV-34	SPR. SYSTEM ON 11TH LEVEL	11TH LEVEL (STAR F)
SV-35	SPR. SYSTEM ON 12TH LEVEL	12TH LEVEL (STAR G)
SV-36	SPR. SYSTEM ON 13TH LEVEL	13TH LEVEL (STAR F)
SV-37	SPR. SYSTEM ON 14TH LEVEL	14TH LEVEL (STAR G)
SV-38	SPR. SYSTEM ON MECH. PENHOUSE	PENHOUSE
SV-39	SPR. SYSTEM IN MECH. P.H. ON 9TH FL.	MECH. RM ON 9TH FL.

FIRE ALARM ZONE SCHEDULE		
ZONE NO.	ZONE	DESCRIPTION
1	P-2 PARKING	
2	P-1 PARKING	
3	G/F PARKING RECYCLING AREA	
4	G/F PARKING GARBAGE & MOVING ROOM	
5	P-2 ELEVATOR LOBBY	
6	P-1 ELEVATOR LOBBY	
7	SPRINKLER ROOM (P-1)	
8	GARBAGE ROOM (G/F)	
9	MAIN ELECTRICAL ROOM (P-2)	
10	GENERATOR ROOM (P-1)	
11	CHILLER ROOM (P-2)	
12	AHU ROOM (P-2)	
13	G/F LOBBY	
14	G/F ELEVATOR LOBBY	
15	G/F AMENITY	
16	G/F CACF ROOM	
17	2/F RESIDENTIAL TO 14/F RESIDENTIAL	
18	STAIR #A SMOKE (P2 TO G/F)	
19	STAIR #B SMOKE (P2 TO G/F)	
20	STAIR #I SMOKE (G/F TO 9/F)	
21	STAIR #F SMOKE (G/F TO ELEV. MACH. RM.)	
22-53	STAIR #G SMOKE (G/F TO ELEV. MACH. RM.)	
54	STAIR #H SMOKE (G/F TO 5/F)	
55	STAIR #K SMOKE (14/F-ELEV. MACH. RM.)	
56-87	MECHANICAL PENTHOUSE (14/F)	
88	ROOF ELEVATOR MACHINE ROOM	
89	ELEVATOR "A" SHAFT & PIT	
90	ELEVATOR "B" SHAFT & PIT	
91	ELEVATOR "C" SHAFT & PIT	
92	SP #1 SMOKE	
93	SP #2 SMOKE	
94	AHU-1 DUCT SMOKE	
95	GARBAGE CHUTE	
96	LOADING DOCK (G/F)	
97	9/F AMENITY - EXTERIOR	
98-100	SPARES	

ELECTRICAL LEGEND

LIGHTING

- FLUORESCENT LIGHT FIXTURE TYPE AS INDICATED
- NIGHT LIGHT OR LIGHT CONNECTED TO EMERGENCY POWER
- CEILING MOUNTED POINTED LIGHT FIXTURE
- POLE MOUNTED POINTED LIGHT FIXTURE
- POLE MOUNTED LIGHT FIXTURE, INSCRIBED LETTER DENOTES TYPE
- CAPPED CEILING LIGHT OUTLET
- TRACK LIGHT
- UNDER CABINET FLUORESCENT LIGHT FIXTURE
- CEILING MOUNTED POINTED LIGHT FIXTURE
- EMERGENCY LIGHT FIXTURE
- EMERGENCY BATTERY PACK
- OCCUPANCY SENSOR POWER PACKS
- SINGLE/DOUBLE POLE SINGLE/DOUBLE THROUGH TOGGLE SWITCH RESPECTIVELY, (3/4" W/ 1" O' DENOTES SHUNT-LOAD/PILOT LIGHT, OTHER SWITCHES LIGHT RESPECTIVELY)
- MASTER LIGHTING SHUT-OFF SWITCH
- SENSOR WALL SWITCH FIR SELF POWERED
- OCCUPANCY SENSOR CEILING MOUNTED

POWER

- REGULAR DUPLEX RECEPTACLE
- DUPLEX RECEPTACLE GROUND FAULT INTERRUPT
- 3-PRONG T-40T DUPLEX RECEPTACLE
- SINGLE RECEPTACLE TYPE AND CONFIGURATION AS SPECIFIED FOR DRIVER
- CONNECTION FOR OVERCURRENT
- ABOVE COUNTER DEVICE
- CEILING MOUNTED DEVICES
- FLOOR MOUNTED DEVICES
- DISCONNECT SWITCH NON-FUSED
- DISCONNECT SWITCH FUSED
- COMBINATION STARTER
- FRACTIONAL MOTOR/FA DIRECT CONNECTION
- DIRECT CONNECTION SINGLE PHASE
- DIRECT CONNECTION THREE PHASE
- THERMOSTAT
- DRYER SENSOR
- HEAT TRACE
- ELECTRICAL HEATER
- ELECTRICAL PANEL / SECURITY PANEL

TELECOMMUNICATION

- TV/CABLE OUTLET
- TELEPHONE OUTLET
- TELEPHONE/CABLE (MULTI-PORT OUTLET)
- DATA OUTLET
- DATA/TELEPHONE OUTLET
- IN SUITE TELEPHONE BOX C/W RECEPTACLE
- UPR LOCATION
- VIDEO INTERCOM
- RADIO RECEIVER

SECURITY

- INTERCOM / INTERPHONE
- INTERCOM WITH CAMERA
- PANIC BUTTON / PANIC INTERCOM STATION
- CARD READER
- AUTOMATIC RELEASE CARD ACCESS/RADIO RECEIVER
- ELECTRIC STRIKE
- MAGLOCK
- DOOR CONTACT / WINDOW CONTACT
- GLASS BREAK DETECTOR
- AUTOMATIC DOOR OPERATOR
- MOTION DETECTOR
- PUSH BUTTON
- SECURITY CAMERA

LIFE SAFETY

- FIRE ALARM SMOKE DETECTOR
- SMOKE ALARM
- FIRE ALARM DUCT TYPE SMOKE DETECTOR
- FIRE ALARM HEAT DETECTOR
- FIBED TYP. 6" S' DRUMMER HEAT DETECTOR
- POSSIBLE PROOF HEAT DETECTOR
- CO ALARM
- COMBINATION SMOKE & CO ALARM
- CO SENSOR / NO SENSOR
- FIRE ALARM MANUAL PULL STATION
- FIREFIGHTER'S HANDSET
- FIRE ALARM SPEAKER/STROBE WALL MTD.
- FIRE ALARM SPEAKER WALL MTD.
- FIRE ALARM SPEAKER/STROBE CEILING MTD.
- FIRE ALARM SPEAKER CEILING MTD.
- FIRE ALARM ANNUNCIATOR PANEL
- FIRE ALARM CONTROL PANEL

REVISIONS

CONTRACTOR MUST CHECK AND VERIFY ALL DIMENSIONS AND CONDITIONS ON THE JOB AND REPORT DISCREPANCIES TO THE ENGINEER BEFORE PROCEEDING WITH THE WORK. THE ENGINEER IS THE MASTER OF THE DRAWINGS AND NOT BE RESPONSIBLE FOR CORRECTIONS OF THE WORK. DRAWINGS ARE NOT TO BE SCALED.

NOVA

115 West Beaver Creek Road, Unit 31
Richmond Hill, Ontario L4B 3M1
Tel: 905-882-5445
Fax: 905-882-5441
Email: cad@novatrendeng.com

FIRE ALARM SCHEDULES & DETAILS

PROJECT TITLE: ALEXANDRA PARK
38 CAMERON STREET, BLOCK II TORONTO ONTARIO

DATE: FEB 13 2013
PROJECT NO: 1313
SCALE: N.T.S.
DRAWING NO: E-33