

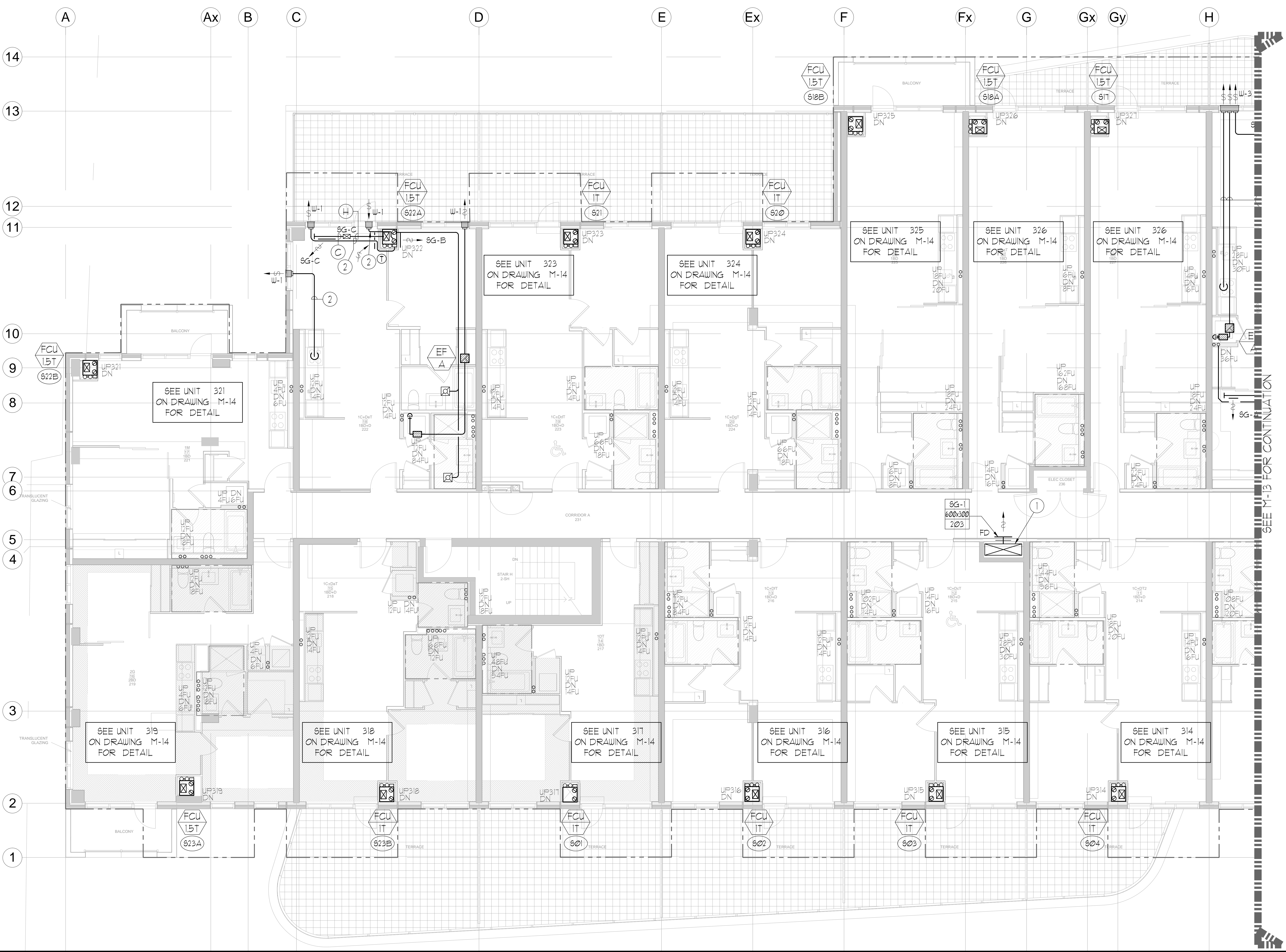
UNIT	NAME	AREA (SQ. FT.)	* OF UR	* OF POWDER	SIZE (T)	FIXTURE UNITS	BR	SQ. FT./T
214	IC-DT2	530	2	0	1	16	1	530
215	IC-DcT	600	2	0	1	16	1	600
216	IC-DIT	610	2	0	1	16	1	610
217	IDT	480	1	0	1	10	1	480
218	IC-DaT	570	1	1	1	16	1	570
219	2G	700	2	0	15	16	1	461
221	IM	550	1	0	15	10	1	361
222	IC-DeT	655	2	0	15	16	1	431
223	IC-DcT	620	2	0	1	16	1	620
224	IC-DgT	620	2	0	1	16	1	620
225	IL2	615	1	0	15	10	1	410
226	ILaT	595	1	0	15	10	1	391
227	ILT	615	1	0	15	10	1	410

DESIGNATION	SIZE	L/S (VALVE APPROVED)	BLANKING
SG-A	300x100	41-70	
SG-B	300x150	71-93	
SG-C	400x150	94-140	
SG-D	450x150	141-188	
EG-A	150x150	35	
W-1	225x200	210mm(L)	
W-2	425x200	INSULATED	
W-3	625x200	WALL BOX	

DESIGNATION	L/S	DUCT SIZE	DESIGNATION	L/S	DUCT SIZE
(A)	47	100x150	(G)	189	350x150
(B)	71	150x150	(H)	236	450x150
(C)	94	200x150	(J)	283	500x150
(D)	118	250x150	(K)	330	600x150
(E)	141	250x150	(L)	371	500x200
(F)	165	300x150			

DESIGNATION	MODEL	W x D
FCU-IT	450	500x660
FCU-15T	600	500x660
FCU-2T	800	500x660
FCU-25T	1000	550x660
FCU-3T	1200	550x660

NOTE:  
A MIN. OF 125mm IS REQUIRED ON THE SIDE OF PIPE RISER.



- GENERAL NOTES:
- CONTRACTOR SHALL CO-ORDINATE ARCHITECTURAL, STRUCTURAL, LIGHTING, HVAC, SPRINKLER DRAWINGS TO AVOID AREAS OF CONFLICT AND TO MAINTAIN CEILING HEIGHTS.
  - CONTRACTOR SHALL REPORT ALL DISCREPANCIES AND AREA OF CONFLICTS TO THE ENGINEER PRIOR TO WORK BEGINS.
  - PROVIDE EXPANSION CHAMBERS FOR ALL KITCHEN SINKS.
  - SEE INSTALLATION DETAILS DRAWING FOR WASHER DOM. H/C WATER SANITARY CONNECTION DETAILS.
  - SUPPLY AND INSTALL COMPLETE DOMESTIC HOT AND COLD WATER LINES, SANITARY AND VENT LINES TO EACH FIXTURE, EQUIPMENT INCLUDING WATER CLOSETS, LAVATORIES, BATHS, SHOWERS, KITCHEN SINK, WASHING MACHINES, DISHWASHERS, AND FLOOR DRAINS, KITCHEN SINK, LAVATORIES, WATER CLOSETS AND WASHING MACHINE TO BE CAJ LOCALIZED SHUT-OFF VALVES.
  - ALL VENT PIPE INSTALLATION TO COMPLY WITH PLUMBING CODES.
  - FOR D.H.C. W. RISER SIZES, REFER TO RISER DIAGRAM
  - FIRE DAMPERS ARE REQUIRED TO BE LISTED AND ARE TO HAVE FIRE PROTECTION RATING OF THE PENETRATED FIRE SEPARATION.
  - THE PIPING PENETRATING THE VARIOUS FIRE SEPARATION IS REQUIRED TO BE FIRESTOPPED WITH A LISTED FIRESTOPPING MATERIAL IN ACCORDANCE WITH OBC ARTICLE 3.1.9.1
  - THE FIRE HOSE CABINET THAT ARE RECESSED INTO THE EXIT STAIR SHAFTS ARE REQUIRED TO BE SEPARATED FROM THE EXIT STAIR BY A 2 HR. FIRE SEPARATION.
  - NO FLEXIBLE DUCT SHALL BE USED FOR ANY IN-SUITE DUCTWORK.
  - PROVIDE 25MM EXTERNAL INSULATION TO ENTIRE FRESH AIR DUCT FROM EXTERIOR WALL TO ERY FAN COIL UNIT.
  - DRYER EXHAUST DUCT SHALL BE SMOOTH AND CORROSION-RESISTANT MATERIAL (FLEXIBLE CONNECTION IS NOT ACCEPTABLE).

REFER TO DIAG. M-X FOR ACOUSTIC NOTES

CLEAR FLOOR TO UNDERSLAB = 2150mm  
CLEAR PRODUCT = 2100mm

- NOTES:
- SOUTH F/A SHAFT A FROM G/F TO B/F DUCT SERVING CORRIDOR FROM G/F TO B/F. SEE VENTILATION RISER DIAGRAM FOR DETAILS.
  - Ø20 KITCHEN / DRYER / W/R / FCU INTAKE / FCU EXHAUST DUCT. (TYPICAL UNLESS OTHERWISE NOTED)

LEGEND MECHANICAL

SYMBOL	DESCRIPTION
[Symbol]	SUPPLY AIR DIFFUSER
[Symbol]	SUPPLY AIR DIFFUSER
[Symbol]	LINEAR SUPPLY DIFFUSER
[Symbol]	RETURN AIR GRILLE
[Symbol]	EXHAUST AIR GRILLE
[Symbol]	SUPPLY DUCT UP
[Symbol]	SUPPLY DUCT DOWN
[Symbol]	RETURN DUCT UP
[Symbol]	RETURN DUCT DOWN
[Symbol]	EXHAUST DUCT UP
[Symbol]	EXHAUST DUCT DOWN
[Symbol]	FIRE DAMPER
[Symbol]	BALANCING DAMPER
[Symbol]	HORIZONTAL DAMPER
[Symbol]	HORIZONTAL FIRE DAMPER
[Symbol]	BACKDRAFT DAMPER
[Symbol]	SPRINGED BLADE VALVE CONTROL DAMPER
[Symbol]	CELLULOSIC GUARDMAT
[Symbol]	TUNING VANES
[Symbol]	FLEXIBLE CONNECTION
[Symbol]	ACOUSTIC INSULATION
[Symbol]	TYPE OF EQUIPMENT
[Symbol]	TYPE OF DIFFUSER OR GRILLE
[Symbol]	WALL SIZE OR RISER RISE SIZE
[Symbol]	AREA/CY (GT OR L/S)
[Symbol]	EXHAUST (1) FRESH AIR (2) EXHAUST
[Symbol]	IN-SUITE ERY MASTER SWITCH
[Symbol]	FAN MATCH / IN-SUITE ERY OVERRIDE BUTTON
[Symbol]	CO RISER
[Symbol]	GAS LINE
[Symbol]	GAS METER
[Symbol]	GAS DOOR
[Symbol]	PRESSURE REDUCING VALVE
[Symbol]	SANITARY ABOVE GRADE
[Symbol]	SANITARY BELOW GRADE
[Symbol]	STONE ABOVE GRADE
[Symbol]	STONE BELOW GRADE
[Symbol]	DOMESTIC COLD WATER
[Symbol]	DOMESTIC HOT WATER
[Symbol]	DOMESTIC HOT WATER RECIRCULATION
[Symbol]	SANITARY VENT
[Symbol]	WATER METER
[Symbol]	FLOOR DRAIN
[Symbol]	TRAP
[Symbol]	ROOF DRAIN
[Symbol]	AREA DRAIN
[Symbol]	B-LEVEL AREA DRAIN
[Symbol]	GRAB BARN
[Symbol]	SANITARY TRAP
[Symbol]	ELBOW UP
[Symbol]	ELBOW DOWN
[Symbol]	WALL CLEANOUT
[Symbol]	FLOOR CLEANOUT
[Symbol]	HOSE BIBS
[Symbol]	NON-FREEZE HOSE BIBS
[Symbol]	SHOWER VALVE
[Symbol]	SLATE VALVE
[Symbol]	BALL VALVE
[Symbol]	BUTTERFLY VALVE
[Symbol]	PRESSURE REDUCING VALVE
[Symbol]	CHECK VALVE
[Symbol]	CAP
[Symbol]	COMPRESSED AIR OUTLET
[Symbol]	BACKFLOW PREVENTER
[Symbol]	SHOULDER BALANCING VALVE
[Symbol]	FILTER PIPES
[Symbol]	1 - DENOTES NO. OF PIPES
[Symbol]	TEMPERATURE SENSOR
[Symbol]	DIAPHRAGM
[Symbol]	2-WAY MODULATING VALVE
[Symbol]	3-WAY MODULATING VALVE
[Symbol]	12V/24V THERMOPILE
[Symbol]	CAJ 1" BUSHING / 1" PLUG
[Symbol]	FLOOR ELEVATION ABOVE LEVEL
[Symbol]	FLOOR ELEVATION THIS LEVEL
[Symbol]	ROOFTOP FLOOR TO US HEIGHT

REVISIONS

NO.	DATE	DESCRIPTION

NOVA  
PROFESSIONAL ENGINEERING  
CONSULTANTS

175 West Beaver Creek Road Unit 31  
Richmond Hill, Ontario L4B 3M1  
Tel: 905-883-5448  
Fax: 905-883-5441  
Email: cad@novastand.com

PROJECT: SOUTH MECHANICAL LAYOUT

PROJECT TITLE: ALEXANDRA PARK

XXX TORONTO ONTARIO

DRAWN BY: G.S. CHECKED BY: E.P. SCALE: 1:50

DATE: FEB, 13 PROJECT NUMBER: 1313 DRAWING NUMBER: M-12 OF 33