

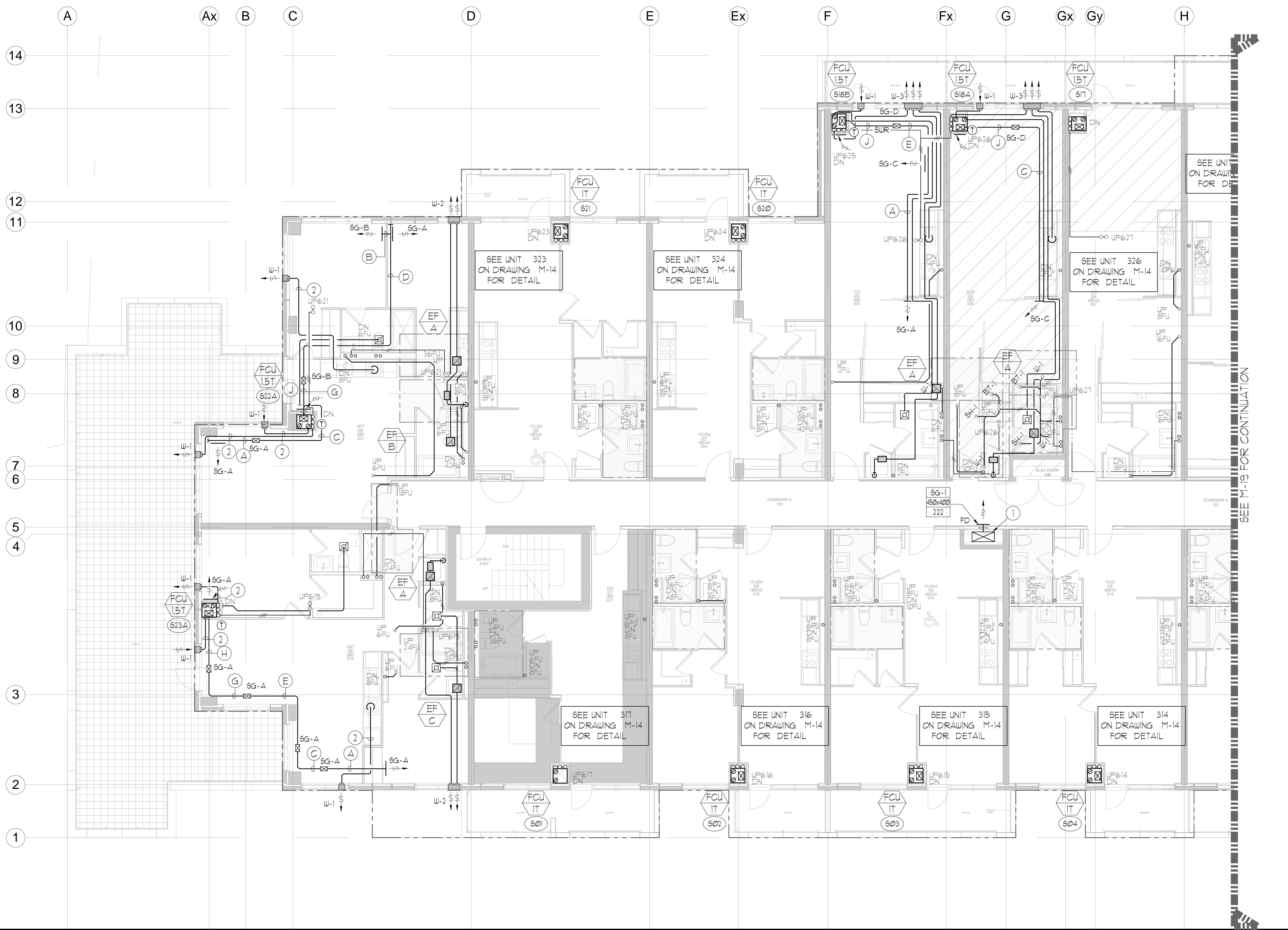
UNIT	NAME	AREA (SQ. FT.)	* OF UR	* OF POWDER	SIZE (T)	FIXTURE UNITS	BR	SQ. FT./T
514	IC-D	590	2	0	1	16	1	590
515	IC-DC2	600	2	0	1	16	1	600
516	IC-DM	610	2	0	1	16	1	610
517	ID3	480	1	0	1	16	1	480
519	2QT	820	2	1	15	22	2	541
521	2PT	840	2	0	15	16	2	560
523	IC-DD	620	2	0	1	16	1	620
524	IC-DG	620	2	0	1	16	1	620
525	IL3	575	1	0	15	10	1	383
526	ILA3	570	1	0	15	10	1	380
527	IL3	615	1	0	15	10	1	410

DESIGNATION	SIZE	L/S (UNLESS SPECIFIED OTHERWISE)
SG-A	300x100	47-10
SG-B	300x150	71-93
SG-C	400x150	94-140
SG-D	450x150	141-188
EG-A	150x150	35
W-1	225x200	210mm(L)
W-2	425x200	INSULATED
W-3	625x200	WALL BOX

DESIGNATION	MODEL	W x D
FCU-IT	450	508x660
FCU-15T	600	508x660
FCU-2T	800	508x660
FCU-25T	1000	508x660
FCU-3T	1200	508x660

NOTE:  
A MIN. OF 125mm IS REQUIRED ON THE SIDE OF PIPE RISER.

DESIGNATION	L/S	DUCT SIZE	DESIGNATION	L/S	DUCT SIZE
A	47	100x150	G	183	350x150
B	71	150x150	H	236	450x150
C	94	200x150	J	283	500x150
D	118	250x150	K	330	600x150
E	141	300x150	L	377	700x150
F	165	350x150			



- GENERAL NOTES:
- CONTRACTOR SHALL CO-ORDINATE ARCHITECTURAL, STRUCTURAL, LIGHTING, HVAC, SPRINKLER DRAWINGS TO AVOID AREAS OF CONFLICT AND TO MAINTAIN CEILING HEIGHTS.
  - CONTRACTOR SHALL REPORT ALL DISCREPANCIES AND AREA OF CONFLICTS TO THE ENGINEER PRIOR TO WORK BEGINS.
  - PROVIDE EXPANSION CHAMBERS FOR ALL KITCHEN SINKS.
  - SEE INSTALLATION DETAILS DRAWING FOR WASHER/DOM. H/C WATER SANITARY CONNECTION DETAILS.
  - SUPPLY AND INSTALL COMPLETE DOMESTIC HOT AND COLD WATER LINES, SANITARY AND VENT LINES TO EACH FIXTURE/EQUIPMENT INCLUDING WATER CLOSETS, LAVATORIES, BATHS, SHOWERS, KITCHEN SINK, WASHING MACHINES, DISHWASHERS, AND FLOOR DRAINS, KITCHEN SINK, LAVATORIES, WATER CLOSETS AND WASHING MACHINE TO BE C/W LOCALIZED SHUT-OFF VALVES.
  - ALL VENT PIPE INSTALLATION TO COMPLY WITH PLUMBING CODES.
  - FOR D.H.A.C. W. RISER SIZES, REFER TO RISER DIAGRAM
  - FIRE DAMPERS ARE REQUIRED TO BE LISTED AND ARE TO HAVE FIRE PROTECTION RATING OF THE PENETRATED FIRE SEPARATION.
  - THE PIPING PENETRATING THE VARIOUS FIRE SEPARATION IS REQUIRED TO BE FIRESTOPPED WITH A LISTED FIRESTOPPING MATERIAL IN ACCORDANCE WITH OBC ARTICLE 3.19.1
  - THE FIRE HOSE CABINET THAT ARE RECESSED INTO THE EXIT STAIR SHAFTS ARE REQUIRED TO BE SEPARATED FROM THE EXIT STAIR BY A 2 HR. FIRE SEPARATION.
  - NO FLEXIBLE DUCT SHALL BE USED FOR ANY IN-SUITE DUCTWORK.
  - PROVIDE 25MM EXTERNAL INSULATION TO ENTIRE FRESH AIR DUCT FROM EXTERIOR WALL TO ERV FAN COIL UNIT.
  - DRYER EXHAUST DUCT SHALL BE SMOOTH AND CORROSION-RESISTANT MATERIAL (FLEXIBLE CONNECTION IS NOT ACCEPTABLE).

REFER TO DIAG. M-X FOR ACOUSTIC NOTES

CLEAR FLOOR TO UNDERSLAB = 285mm  
 CLEAR PRODUCT = 2800mm  
 EXCEPT UNIT: 503 CLEAR PRODUCT = 2850mm  
 EXCEPT UNITS: 516/527 CLEAR PRODUCT = 2600mm  
 UNITS 519/521: DRAINING FROM TERRACE ON 6/F

- NOTES:
- SOUTH F/A SHAFT A FROM G/F TO 6/F DUCT SERVING CORRIDOR FROM G/F TO 6/F. SEE VENTILATION RISER DIAGRAM FOR DETAILS.
  - 150Ø KITCHEN / DRYER / W/R / FCU INTAKE / FCU EXHAUST DUCT. (TYPICAL UNLESS OTHERWISE NOTED)

LEGEND MECHANICAL

SYMBOL	DESCRIPTION
[Symbol]	SUPPLY AIR DIFFUSER
[Symbol]	SUPPLY AIR NOZZLE
[Symbol]	LINEAR SUPPLY DIFFUSER
[Symbol]	THROTTLE VALVE
[Symbol]	RETURN AIR GRILLE
[Symbol]	EXHAUST AIR GRILLE
[Symbol]	SUPPLY DUCT UP
[Symbol]	SUPPLY DUCT DOWN
[Symbol]	RETURN DUCT UP
[Symbol]	RETURN DUCT DOWN
[Symbol]	EXHAUST DUCT UP
[Symbol]	EXHAUST DUCT DOWN
[Symbol]	FIRE DAMPER
[Symbol]	BALANCING DAMPER
[Symbol]	HORIZONTAL DAMPER
[Symbol]	HORIZONTAL FIRE DAMPER
[Symbol]	BACKDRAFT DAMPER
[Symbol]	SPRINGED BLADE VALVE/FIRE CONTROL DAMPER
[Symbol]	CELLULOSIC GUARDMANT
[Symbol]	TUNING VANES
[Symbol]	FLEXIBLE CONNECTION
[Symbol]	ACOUSTIC INSULATION
[Symbol]	TYPE OF EQUIPMENT
[Symbol]	TYPE OF DIFFUSER OR GRILLE
[Symbol]	WALL SIZE OR OTHER RISER SIZE
[Symbol]	WATER (HOT OR COLD)
[Symbol]	EXHAUST (HOT OR COLD)
[Symbol]	IN-SUITE ERV MASTER SWITCH
[Symbol]	FAN MATCH / IN-SUITE ERV OVERRIDE BUTTON
[Symbol]	CO RISER
[Symbol]	GAS LINE
[Symbol]	GAS METER
[Symbol]	GAS STOP
[Symbol]	PRESSURE REDUCING VALVE
[Symbol]	SANITARY ABOVE GRADE
[Symbol]	SANITARY BELOW GRADE
[Symbol]	STONE ABOVE GRADE
[Symbol]	STONE BELOW GRADE
[Symbol]	DOMESTIC COLD WATER
[Symbol]	DOMESTIC HOT WATER
[Symbol]	SANITARY VENT
[Symbol]	WATER METER
[Symbol]	FLOOR DRAIN
[Symbol]	TRAP
[Symbol]	ROOF DRAIN
[Symbol]	AREA DRAIN
[Symbol]	B-LEVEL AREA DRAIN
[Symbol]	GRAB BARN
[Symbol]	SANITARY TRAP
[Symbol]	ELBOW UP
[Symbol]	ELBOW DOWN
[Symbol]	WALL CLEANOUT
[Symbol]	FLOOR CLEANOUT
[Symbol]	HOSE BIBS
[Symbol]	NON-FREEZE HOSE BIBS
[Symbol]	DOOR VALVE
[Symbol]	GATE VALVE
[Symbol]	BALL VALVE
[Symbol]	BUTTERFLY VALVE
[Symbol]	PRESSURE REDUCING VALVE
[Symbol]	CHECK VALVE
[Symbol]	CAP
[Symbol]	COMPRESSED AIR OUTLET
[Symbol]	BACKFLOW PREVENTER
[Symbol]	SHOULDER BALANCING VALVE
[Symbol]	MULTIPLE PIPES
[Symbol]	1 - DENOTES NO. OF PIPES
[Symbol]	TEMPERATURE SENSOR
[Symbol]	2-WAY MODULATING VALVE
[Symbol]	3-WAY MODULATING VALVE
[Symbol]	12V (VFD) THERMOSTAT
[Symbol]	C/W 1" BUSHING 4 1/2" PLUG
[Symbol]	FLOOR ELEVATION ABOVE SLAB
[Symbol]	FLOOR ELEVATION THIS LEVEL
[Symbol]	CEILING FLOOR TO US HEIGHT

REVISIONS

NO.	DESCRIPTION	DATE

NOVA CONSULTANTS INC. PROFESSIONAL ENGINEERING

175 West Beaver Creek Road, Unit 31  
 Richmond Hill, Ontario L4B 3M1  
 Tel: 905-882-5445  
 Fax: 905-882-5441  
 Email: cad@novastand.com

PROJECT TITLE: ALEXANDRA PARK

DATE: FEB, 13 1313

SCALE: 1:50

DRAWING NUMBER: M-10 OF 33