

UNIT	NAME	AREA (SQ. FT.)	# OF UR	# OF FOUJDER	SIZE (T)	FIXTURE UNITS	BR	SQ. FT/T
201	14-MR3	525	1	0	1	10	1	525
202	1E-D	660	2	0	1	16	1	660
205	3BR	980	2	1	2	22	3	490
208	3B	980	2	1	2	22	3	490
210	1F-D2	660	2	0	1	16	1	660
211	1C-D1	590	2	0	1	16	1	590
212	1C-D1	590	2	0	1	16	1	590
213	1C-D2	590	2	0	1	16	1	590
220	2F-M2	705	2	0	1.5	16	2	470
223	1B-D4	580	1	0	1	10	1	580

DESIGNATION	SIZE	L/S (VALVE SPECIFIED)
SG-A	300x100	41-10
SG-B	300x150	71-93
SG-C	400x150	94-140
SG-D	450x150	141-108
EG-A	150x150	35
W-1	225x200	210mm(L)
W-2	425x200	INSULATED WALL BOX
W-3	625x200	INSULATED WALL BOX

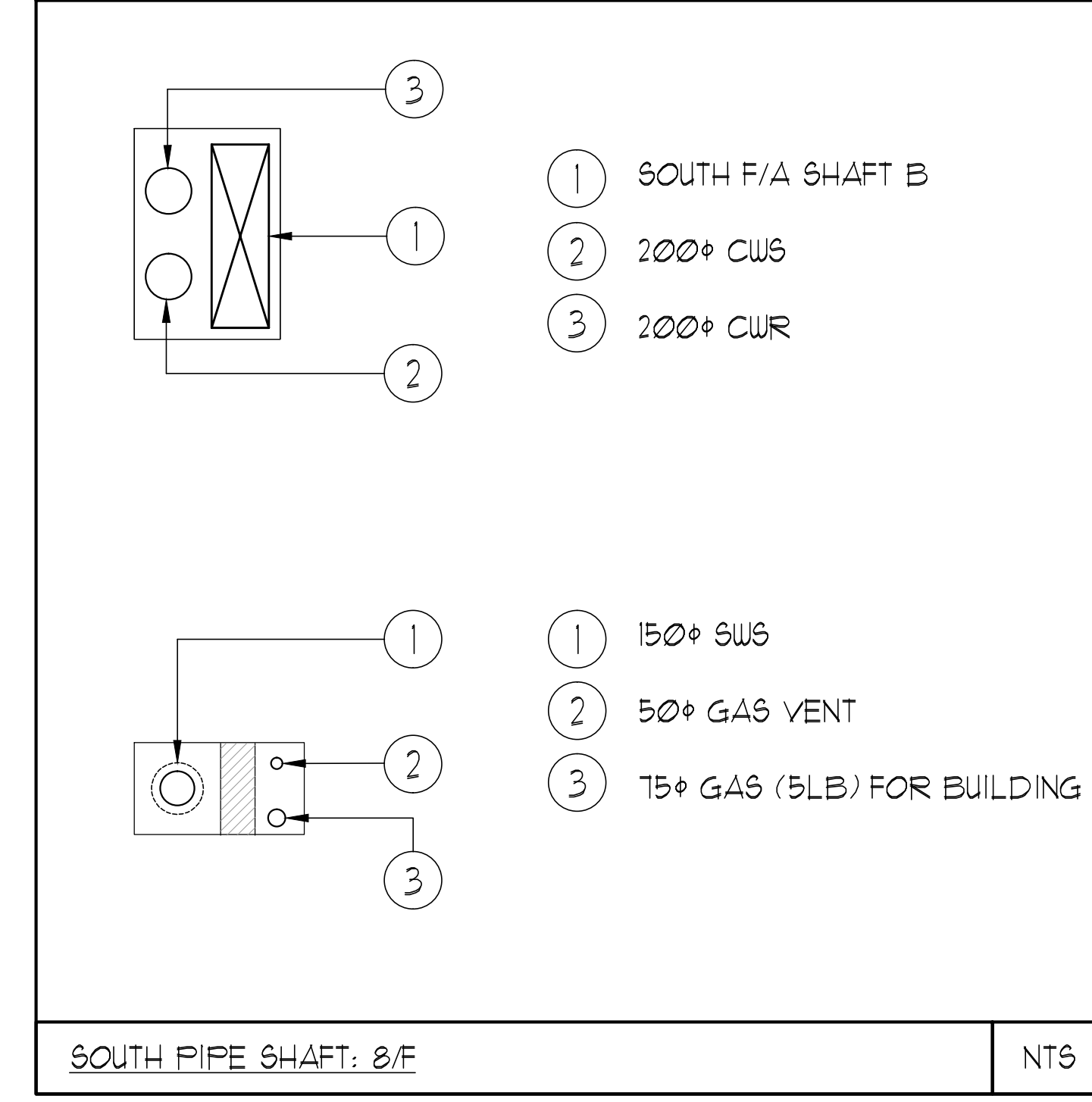
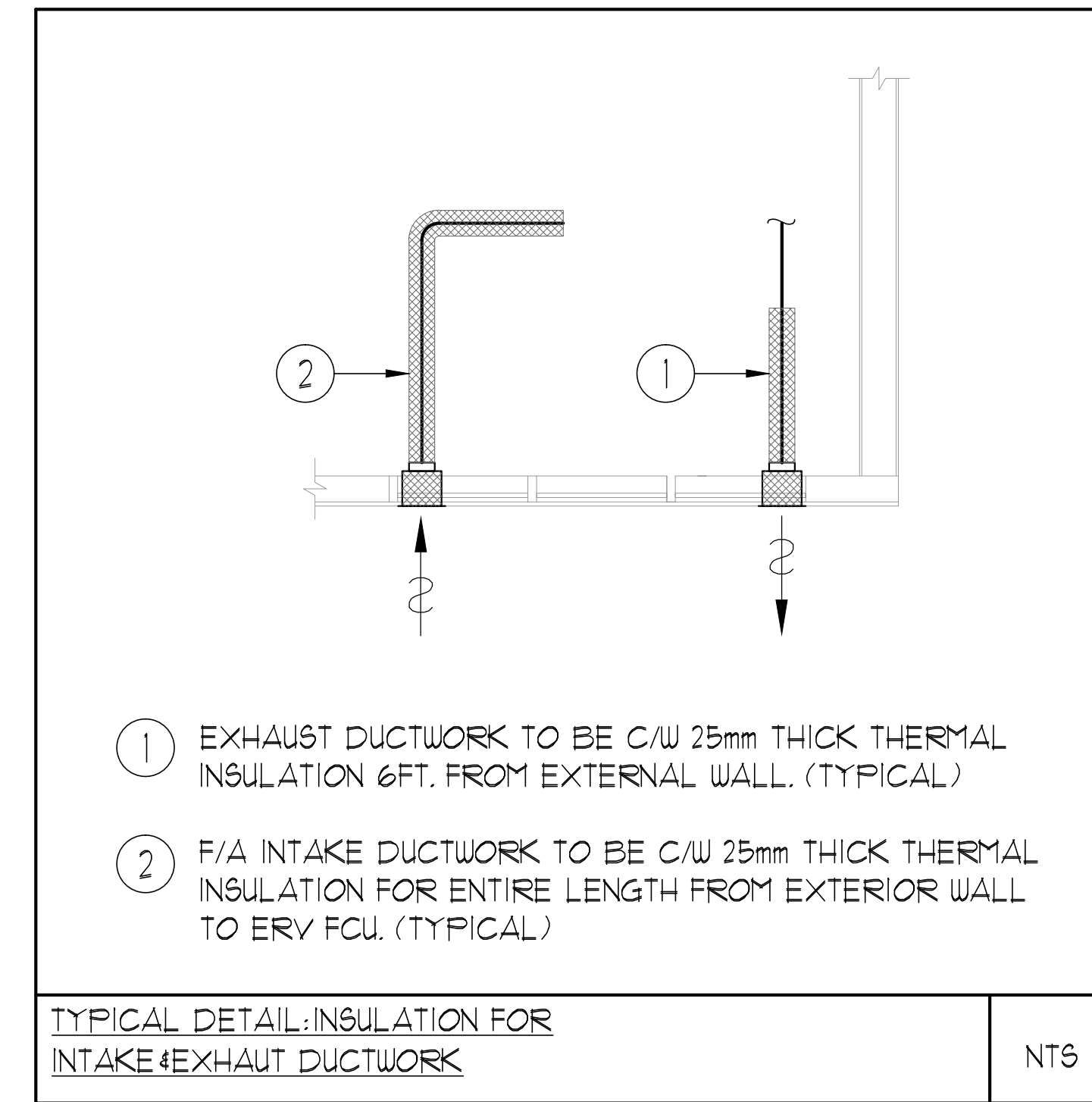
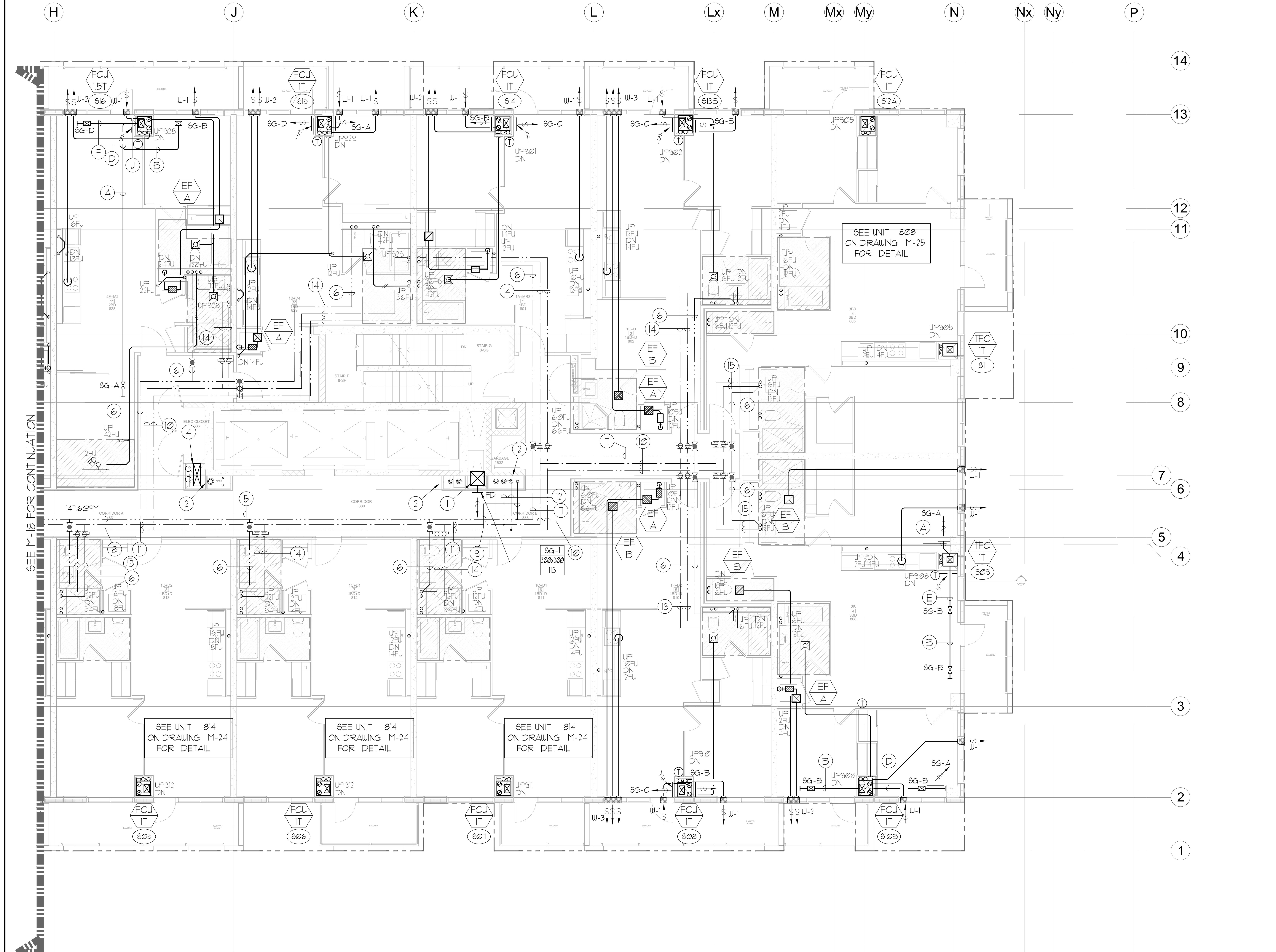
DESIGNATION	MODEL	W x D
FCU-1T	450	508x660
FCU-1BT	600	508x660
FCU-2T	800	508x660
FCU-2BT	1000	559x660
FCU-3T	1200	559x660

NOTE:
A MIN. OF 125mm IS REQUIRED ON THE SIDE OF PIPE RISER.

DESIGNATION	L/S	DUCT SIZE	DESIGNATION	L/S	DUCT SIZE
A	47	100x150	G	109	350x150
B	71	150x150	H	236	450x150
C	94	200x150	J	283	500x150
D	118	200x150	K	330	600x150
E	141	250x150	L	377	500x200
F	165	300x150			

- GENERAL NOTES:
- CONTRACTOR SHALL CO-ORDINATE ARCHITECTURAL, STRUCTURAL, LIGHTING, HVAC, SPRINKLER DRAWINGS TO AVOID AREAS OF CONFLICT AND TO MAINTAIN CEILING HEIGHTS.
 - CONTRACTOR SHALL REPORT ALL DISCREPANCIES AND AREA OF CONFLICTS TO THE ENGINEER PRIOR TO WORK BEGINS.
 - PROVIDE EXPANSION CHAMBERS FOR ALL KITCHEN SINKS.
 - SEE INSTALLATION DETAILS DRAWING FOR WASHER DOM. H/C WATER, SANITARY CONNECTION DETAILS.
 - SUPPLY AND INSTALL COMPLETE DOMESTIC HOT AND COLD WATER LINES, SANITARY AND VENT LINES TO EACH FIXTURE/EQUIPMENT INCLUDING WATER CLOSETS, LAVATORIES, BATHS, SHOWERS, KITCHEN SINK, WASHING MACHINES, DISHWASHERS, AND FLOOR DRAINS, KITCHEN SINK, LAVATORIES, WATER CLOSETS AND WASHING MACHINE TO BE C/W LOCALIZED SHUT-OFF VALVES.
 - ALL VENT PIPE INSTALLATION TO COMPLY WITH PLUMBING CODES.
 - FOR D.H.C. W. RISER SIZES, REFER TO RISER DIAGRAM
 - FIRE DAMPERS ARE REQUIRED TO BE LISTED AND ARE TO HAVE FIRE PROTECTION RATING OF THE PENETRATED FIRE SEPARATION.
 - THE PIPING PENETRATING THE VARIOUS FIRE SEPARATION IS REQUIRED TO BE FIRESTOPPED WITH A LISTED FIRESTOPPING MATERIAL IN ACCORDANCE WITH OBC ARTICLE 3.13.1
 - THE FIRE HOSE CABINET THAT ARE RECESSED INTO THE EXIT STAIR SHAFTS ARE REQUIRED TO BE SEPARATED FROM THE EXIT STAIR BY A 2 HR. FIRE SEPARATION.
 - NO FLEXIBLE DUCT SHALL BE USED FOR ANY IN-SUITE DUCTWORK.
 - PROVIDE 25MM EXTERNAL INSULATION TO ENTIRE FRESH AIR DUCT FROM EXTERIOR WALL TO ERY FAN COIL UNIT.
 - DRYER EXHAUST DUCT SHALL BE SMOOTH AND CORROSION-RESISTANT MATERIAL (FLEXIBLE CONNECTION IS NOT ACCEPTABLE).

- ACOUSTIC NOTES:
- FOR FLOORS WITH ERY'S:
- XX) ERY'S SHALL BE ISOLATED USING ISOLATORS INCORPORATING BOTH A SPRING ELEMENT AND A SECONDARY NEOPRENE-IN-SHEAR ELEMENT IN SERIES. DUCTWORK SHALL BE DE-COUPLED FROM FAN BY FLEXIBLE CONNECTORS, ASSOCIATED DUCTWORK SHALL BE SUSPENDED ON HANGERS WITH NEOPRENE PADS.
- FOR TRANSITION FLOORS:
- XX) ALL HORIZONTAL SUPPLY AIR DUCTWORK SHALL BE C/W 25MM INTERNAL ACOUSTIC LINING AND SHALL BE SUSPENDED ON RUBBER PADS IN THE HANGERS. ELBOUS SHALL BE COMPLETE WITH TURNING VANES.
- XX) ALL SYSTEM/DOMESTIC PIPE LOOPS OR OFFSETS WHICH ARE LARGER THAN 75 MM SHALL BE ISOLATED USING NEOPRENE-IN-SHEAR HANGERS AND ADDITIONAL 25 MM THICK RIBBED OR WAFFLED NEOPRENE PADS IN THE SADDLES OF CLEVIS HANGERS.
- 2) ALL PIPES 50MM DIA. AND SMALLER SHALL BE ISOLATED WITH NEOPRENE PADS.



- CLEAR FLOOR TO UNDERSLAB = 3050mm
CLEAR PRODUCT = 2100mm
COMPLETE DROP CEILING = 3500mm
UNITS 216/217/219/221/223/224; DRAINS FROM AMENITY TERRACE ON 9/F
- NOTES:
- NORTH F/A SHAFT SERVING FROM G/F TO 14/F. F/A DUCT SERVING CORRIDOR FROM G/F TO 14/F. SEE VENTILATION RISER DIAGRAM FOR DETAILS.
 - PIPE SHAFT - REFER TO PIPE RISER DETAIL ON THIS DRAWING FOR DETAILS.
 - 150+ KITCHEN / DRYER / W/R / FCU INTAKE / FCU EXHAUST DUCT. (TYPICAL UNLESS OTHERWISE NOTED)
 - SOUTH F/A SHAFT B FROM G/F TO 14/F. F/A DUCT SERVING CORRIDOR FROM 9/F TO 14/F. SEE VENTILATION RISER DIAGRAM FOR DETAILS.
 - 75+ SWR
 - 15+ DHUR
 - 25+ DHUR
 - 38+ DHUR
 - 50+ DHUR
 - 50+ DCU + 38+ DHU
 - 63+ DCU + 50+ DHU
 - 75+ DCU + 63+ DHU
 - 32+ DCU + 25+ DHU
 - 38+ DCU + 32+ DHU
 - 19+ DCU + 19+ DHU

LEGEND MECHANICAL

SYMBOL	DESCRIPTION
[Symbol]	SUPPLY AIR DIFFUSER
[Symbol]	SUPPLY AIR HOPPER
[Symbol]	LINEAR SUPPLY DIFFUSER
[Symbol]	FAN MATCH
[Symbol]	RETURN AIR GRILLE
[Symbol]	EXHAUST AIR GRILLE
[Symbol]	SUPPLY DUCT UP
[Symbol]	SUPPLY DUCT DOWN
[Symbol]	RETURN DUCT UP
[Symbol]	RETURN DUCT DOWN
[Symbol]	EXHAUST DUCT DOWN
[Symbol]	FIRE DAMPER
[Symbol]	BALANCING DAMPER
[Symbol]	HORIZONTAL DAMPER
[Symbol]	HORIZONTAL FIRE DAMPER
[Symbol]	BACKDRAFT DAMPER
[Symbol]	SPRINGED BLADE VALVE/FIRE CONTROL DAMPER
[Symbol]	CALL LOCKING DAMPER
[Symbol]	TURNING VANES
[Symbol]	FLEXIBLE CONNECTION
[Symbol]	ACOUSTIC INSULATION
[Symbol]	TYPE OF EQUIPMENT
[Symbol]	IDENTIFICATION
[Symbol]	TYPE OF DIFFUSER OR GRILLE
[Symbol]	WALL SIZE OR OFFERED WALL SIZE
[Symbol]	AREA (SQ. FT. OR L ²)
[Symbol]	2-WAY VALVE (F/RAISE / F/LOWER)
[Symbol]	3-WAY ERY MASTER SWITCH
[Symbol]	FAN MATCH / IN-SUITE ERY OVERRIDE BUTTON
[Symbol]	CO SMOKE
[Symbol]	GAS LINE
[Symbol]	GAS TRIM
[Symbol]	GAS DOOR
[Symbol]	PRESSURE REDUCING VALVE
[Symbol]	SANITARY ABOVE GRADE
[Symbol]	SANITARY BELOW GRADE
[Symbol]	STONE ABOVE GRADE
[Symbol]	STONE BELOW GRADE
[Symbol]	CORROSION RESISTANT WATER
[Symbol]	CORROSION RESISTANT WATER
[Symbol]	SANITARY VENT
[Symbol]	WATER METER
[Symbol]	FLOOR DRAIN
[Symbol]	WATER DRAIN
[Symbol]	ROOF DRAIN
[Symbol]	ROOF DRAIN
[Symbol]	ROOF DRAIN
[Symbol]	AREA DRAIN
[Symbol]	B-L-LEVEL AREA DRAIN
[Symbol]	GAS BARNS
[Symbol]	SANITARY TRAP
[Symbol]	ELBOW DN
[Symbol]	ELBOW UP
[Symbol]	WALL CLEANOUT
[Symbol]	FLOOR CLEANOUT
[Symbol]	HOSE BIBS
[Symbol]	NON-FREEZE HOSE BIBS
[Symbol]	SHUTTER VALVE
[Symbol]	SHUTTER VALVE
[Symbol]	BUTTERFLY VALVE
[Symbol]	PRESSURE REDUCING VALVE
[Symbol]	SHUTTER VALVE
[Symbol]	CAP
[Symbol]	COMPRESSED AIR OUTLET
[Symbol]	BACKFLOW PREVENTER
[Symbol]	ISOLATED BALANCING VALVE
[Symbol]	TEMPERATURE SENSOR
[Symbol]	TEMPERATURE
[Symbol]	2-WAY MODULATING VALVE
[Symbol]	3-WAY MODULATING VALVE
[Symbol]	12" (400) THERMOSTAT
[Symbol]	C/W 1" BUSHING + 1/2" PLUG
[Symbol]	FLOOR ELEVATION ABOVE FINISH
[Symbol]	FLOOR ELEVATION THIS LEVEL
[Symbol]	ROOF FLOOR TO US (HEIGHT)

REVISIONS

NO.	DESCRIPTION	DATE

NOVA
PROFESSIONAL ENGINEERING
ARCHITECTURE

175 West Beaver Creek Road, Unit 31
Richmond Hill, Ontario L4B 3M1
Tel: 905-882-5445
Fax: 905-882-5441
Email: cad@novastand.com

PROJECT TITLE:
ALEXANDRA PARK

DATE: FEB, 13 2013
DRAWING NUMBER: M-25 OF 33