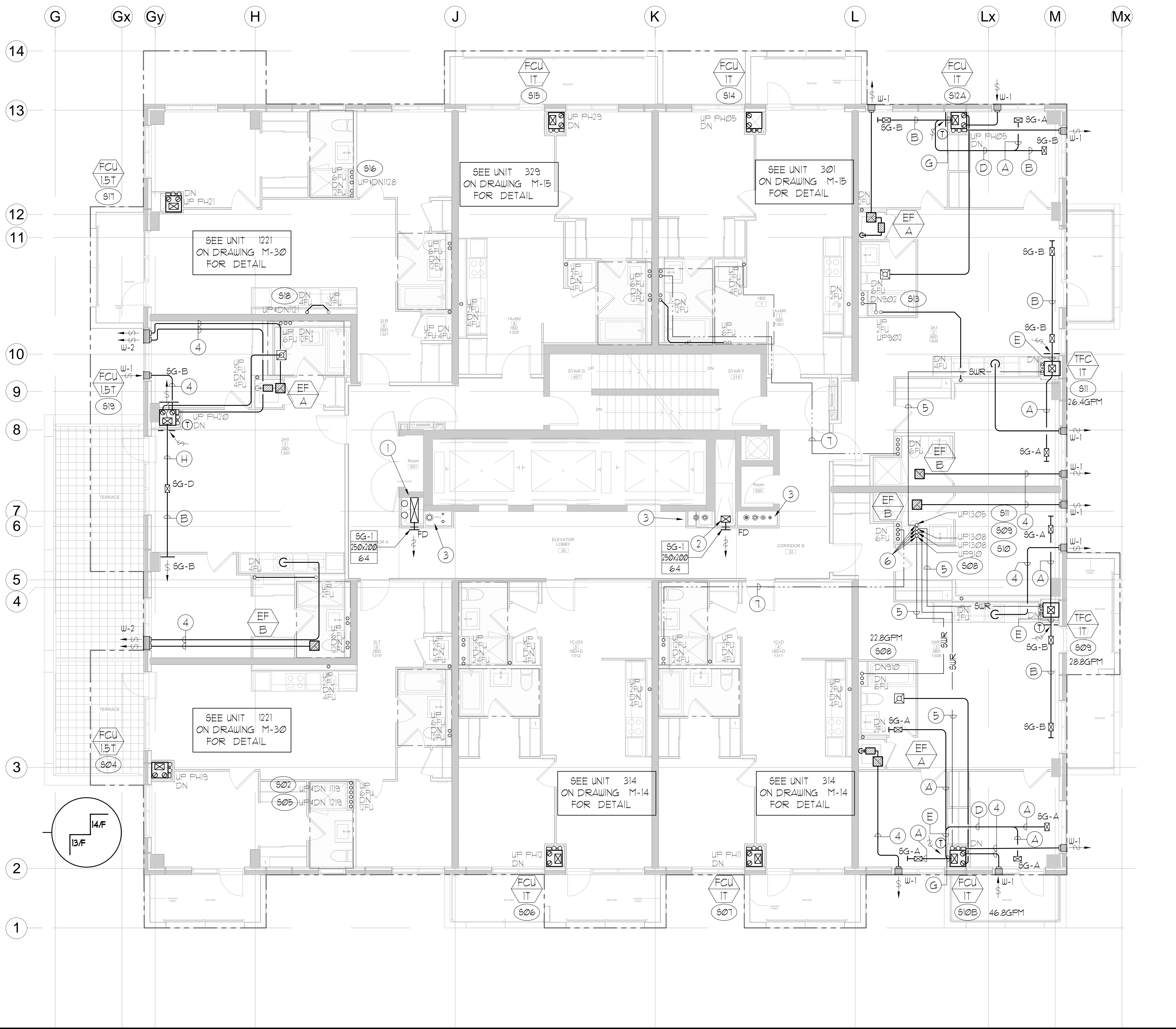


UNIT	NAME	AREA (SQ. FT.)	* OF UR	* OF FOLDER	SIZE (T)	FIXTURE UNITS	BR	SQ. FT./T
1301	14-MR	525	1	0	1	10	1	525
1305	3AI	870	2	0	2	16	3	435
1308	3AR3	870	2	0	2	16	3	435
1311	1C-D	590	2	0	1	16	1	590
1312	1C-D3	590	2	0	1	16	1	590
1319	2LT	755	2	0	15	16	2	503
1320	2HT	740	2	0	15	16	2	493
1321	2LR	755	2	0	15	16	2	503
1329	14-MR	590	1	0	1	10	1	590

- GENERAL NOTES:**
- CONTRACTOR SHALL CO-ORDINATE ARCHITECTURAL, STRUCTURAL, LIGHTING, HVAC, SPRINKLER DRAWINGS TO AVOID AREAS OF CONFLICT AND TO MAINTAIN CEILING HEIGHTS.
 - CONTRACTOR SHALL REPORT ALL DISCREPANCIES AND AREA OF CONFLICTS TO THE ENGINEER PRIOR TO WORK BEGINS.
 - PROVIDE EXPANSION CHAMBERS FOR ALL KITCHEN SINKS.
 - SEE INSTALLATION DETAILS DRAWING FOR WASHER DOM. H/C WATER, SANITARY CONNECTION DETAILS.
 - SUPPLY AND INSTALL COMPLETE DOMESTIC HOT AND COLD WATER LINES, SANITARY AND VENT LINES TO EACH FIXTURE EQUIPMENT INCLUDING WATER CLOSETS, LAVATORIES, BATHS, SHOWERS, KITCHEN SINK, WASHING MACHINES, DISHWASHERS, AND FLOOR DRAINS, KITCHEN SINK, LAVATORIES, WATER CLOSETS AND WASHING MACHINE TO BE C/W LOCALIZED SHUT-OFF VALVES.
 - ALL VENT PIPE INSTALLATION TO COMPLY WITH PLUMBING CODES.
 - FOR D.H.C. W. RISER SIZES, REFER TO RISER DIAGRAM
 - FIRE DAMPERS ARE REQUIRED TO BE LISTED AND ARE TO HAVE FIRE PROTECTION RATING OF THE PENETRATED FIRE SEPARATION.
 - THE PIPING PENETRATING THE VARIOUS FIRE SEPARATION IS REQUIRED TO BE FIRESTOPPED WITH A LISTED FIRESTOPPING MATERIAL IN ACCORDANCE WITH OBC ARTICLE 3.19.1
 - THE FIRE HOSE CABINET THAT ARE RECESSED INTO THE EXIT STAIR SHAFTS ARE REQUIRED TO BE SEPARATED FROM THE EXIT STAIR BY A 2 HR. FIRE SEPARATION.
 - NO FLEXIBLE DUCT SHALL BE USED FOR ANY IN-SUITE DUCTWORK.
 - PROVIDE 25MM EXTERNAL INSULATION TO ENTIRE FRESH AIR DUCT FROM EXTERIOR WALL TO ERY FAN COIL UNIT.
 - DRYER EXHAUST DUCT SHALL BE SMOOTH AND CORROSION-RESISTANT MATERIAL (FLEXIBLE CONNECTION IS NOT ACCEPTABLE).

LEGEND MECHANICAL

SYMBOL	DESCRIPTION
[Symbol]	SUPPLY AIR DIFFUSER
[Symbol]	SUPPLY AIR NOZZLE
[Symbol]	LINEAR SUPPLY DIFFUSER
[Symbol]	FAN MATCH
[Symbol]	RETURN AIR GRILLE
[Symbol]	EXHAUST AIR GRILLE
[Symbol]	SUPPLY DUCT UP
[Symbol]	SUPPLY DUCT DOWN
[Symbol]	RETURN DUCT UP
[Symbol]	RETURN DUCT DOWN
[Symbol]	EXHAUST DUCT UP
[Symbol]	EXHAUST DUCT DOWN
[Symbol]	FIRE DAMPER
[Symbol]	BALANCING DAMPER
[Symbol]	HORIZONTAL DAMPER
[Symbol]	HORIZONTAL FIRE DAMPER
[Symbol]	BACKDRAFT DAMPER
[Symbol]	SPRINGED BLADE VALVE CONTROL DAMPER
[Symbol]	CALL LOCKING DAMPER
[Symbol]	TUNING VANES
[Symbol]	FLEXIBLE CONNECTION
[Symbol]	ACOUSTIC INSULATION
[Symbol]	TYPE OF EQUIPMENT
[Symbol]	IDENTIFICATION
[Symbol]	TYPE OF DAMPER OR GRILLE
[Symbol]	GRILLE SIZE OR DIFFUSER RISE SIZE
[Symbol]	AREA (SQ. FT. OR L ²)
[Symbol]	2-DIMENSIONAL (RISER, FLOOR)
[Symbol]	IN-SUITE ERY MASTER SWITCH
[Symbol]	FAN MATCH / IN-SUITE ERY OVERRIDE BUTTON
[Symbol]	CO RISER
[Symbol]	GAS LINE
[Symbol]	GAS METER
[Symbol]	GAS DOOR
[Symbol]	PRESSURE REDUCING VALVE
[Symbol]	SANITARY ABOVE GRADE
[Symbol]	SANITARY BELOW GRADE
[Symbol]	STORM ABOVE GRADE
[Symbol]	STORM BELOW GRADE
[Symbol]	DOMESTIC COLD WATER
[Symbol]	DOMESTIC HOT WATER REGULATION
[Symbol]	SANITARY VENT
[Symbol]	WATER METER
[Symbol]	FLOOR DRAIN
[Symbol]	PAN/EL. FLOOR DRAIN
[Symbol]	ROOF DRAIN
[Symbol]	BLD. AREA DRAIN
[Symbol]	AREA DRAIN
[Symbol]	B-LVL. AREA DRAIN
[Symbol]	GRAB BARN
[Symbol]	SANITARY TRAP
[Symbol]	ELBOW UP
[Symbol]	ELBOW DOWN
[Symbol]	WALL CLEANOUT
[Symbol]	FLOOR CLEANOUT
[Symbol]	HOSE BIB
[Symbol]	NON-FREEZE HOSE BIB
[Symbol]	SHRIVE VALVE
[Symbol]	SLATE VALVE
[Symbol]	SHALL VALVE
[Symbol]	BUTTERFLY VALVE
[Symbol]	PRESSURE REDUCING VALVE
[Symbol]	CHECK VALVE
[Symbol]	CAP
[Symbol]	COMPRESSED AIR OUTLET
[Symbol]	BACKFLOW PREVENTER
[Symbol]	ISOLAT. BALANCING VALVE
[Symbol]	TRIPLE PIPES
[Symbol]	/ DENOTES NO. OF PIPES
[Symbol]	TEMPERATURE SENSOR
[Symbol]	DIAPHRAGM
[Symbol]	2-WAY MODULATING VALVE
[Symbol]	3-WAY MODULATING VALVE
[Symbol]	12V/24V THERMOSTAT
[Symbol]	CUU 17 BUSHING 4 1/2" PLUG
[Symbol]	FLOOR ELEVATION ABOVE GRADE
[Symbol]	FLOOR ELEVATION THIS LEVEL
[Symbol]	ROOFTOP FLOOR TO US. HEIGHT



REFER TO DWG. M-X FOR ACOUSTIC NOTES

CLEAR FLOOR TO UNDERSLAB + 3050mm
ALL UNITS CLEAR PRODUCT = 3020mm
EXCEPT UNITS: 1305/1308 CLEAR PRODUCT = 2700mm
UNITS 1305/1308 COMPLETE DROP CEILING + 350mm

- NOTES:**
- SOUTH F/A SHAFT B FROM G/F TO 14/F DUCT SERVING CORRIDOR FROM 9/F TO 14/F. SEE VENTILATION RISER DIAGRAM FOR DETAILS.
 - NORTH F/A SERVING FROM G/F TO 14/F. F/A DUCT SERVING CORRIDOR FROM G/F TO 14/F. SEE VENTILATION RISER DIAGRAM FOR DETAILS.
 - PIPE SHAFT - REFER TO PIPE DIAGRAM FOR DETAILS.
 - 150# KITCHEN / DRYER / W/R / FCU INTAKE / FCU EXHAUST DUCT. (TYPICAL UNLESS OTHERWISE NOTED)
 - 50# SUR.
 - 50# SUR UP.
 - 13# DHUR.

GRILLE SIZING TABLE

DESIGNATION	SIZE	L/S (INFORM SPECIFIED ELEVATION)
SG-A	300x100	47-10
SG-B	300x150	71-93
SG-C	400x150	94-140
SG-D	450x150	141-188
EG-A	150x150	35
W-1	225x200	210mm(L)
W-2	425x200	INSULATED
W-3	625x200	WALL BOX

VERTICAL FAN COIL SIZE

DESIGNATION	MODEL	W x D
FCU-IT	450	508x660
FCU-15T	600	508x660
FCU-2T	800	508x660
FCU-25T	1000	559x660
FCU-3T	1200	559x660

NOTE:
A MIN. OF 125mm IS REQUIRED ON THE SIDE OF PIPE RISER.

DUCT SIZING TABLE (4.06 m/s, 800 FPM)

DESIGNATION	L/S	DUCT SIZE
A	47	100x150
B	71	150x150
C	94	200x150
D	118	200x150
E	141	250x150
F	165	300x150

DESIGNATION	L/S	DUCT SIZE
G	189	350x150
H	236	450x150
J	283	500x150
K	330	600x150
L	377	500x200

REVISIONS

NO.	DATE	DESCRIPTION

NOVA
MECHANICAL
ENGINEERING

175 West Beaver Creek Road, Unit 31
Richmond Hill, Ontario L4B 3M1
Tel: 905-887-5445
Fax: 905-887-5441
Email: cad@novastrending.com

PROJECT TITLE: ALEXANDRA PARK
DRAWING NO: M-31
DATE: FEB, 13 2014
SCALE: 1:50
SHEET: 1 OF 33