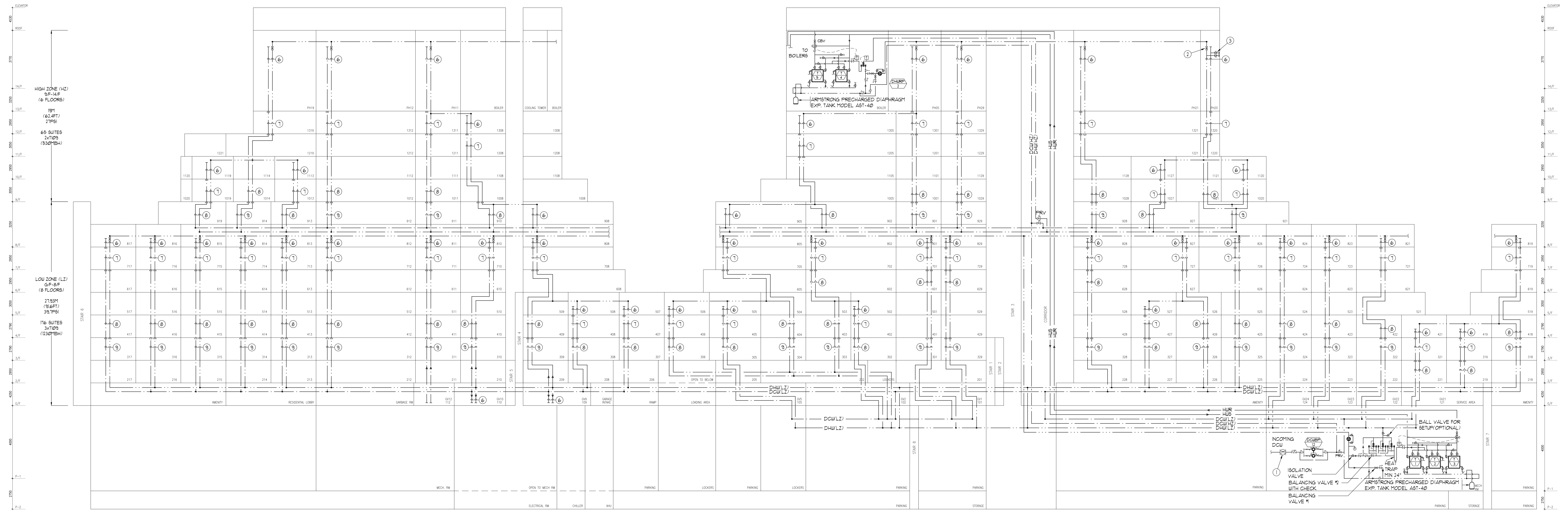


FRV SCHEDULE					
FRV #	DUTY	FLOW RATE (GPM)	INLET PRESSURE (PSI)	OUTLET PRESSURE (PSI)	REMARKS
1	LOW ZONE DHW & DCU	230	-	-	CLA-VAL MODEL 906-01ASKC 63mm & OR EQUAL (100mm)

- GENERAL NOTES:**
- 1) SIZES SHOWN INDICATE REDUCTIONS AFTER DHW HEADERS ON STOREY INDICATED.
 - 2) REFER TO FLOOR PLANS FOR SIZING OF HORIZONTAL PIPE.
 - 3) PROVIDE 1/2" SHUT OFF VALVES FOR EACH SUITE.
 - 4) PROVIDE DRAIN VALVE AT BOTTOM OF EACH RISER.
 - 5) PROVIDE AIR VENT AT TOP OF EACH RISER.
 - 6) PROVIDE 1/2" CIRCUIT BALANCING VALVE ON TOP OF EACH DOMESTIC HOT WATER RISER EACH CIRCUIT VALVE TO BE BALANCED TO EQUAL FLOW.
 - 7) ALL RISER ANCHORS MUST INCLUDE 25MM THICK NSN ISOLATION PADS. THE PADS ARE TO BE HELD IN PLACE WITH HORIZONTAL STEEL PLATES WELDED TO BRACKETS THAT ARE IN TURN WELDED TO THE RISER.
 - 8) WHERE RISERS ARE SUPPORTED BY T-CLAMPS RATHER THAN ANCHORS, NSN PADS ARE TO BE INCLUDED BELOW THE T-CLAMP.
 - 9) ANY PIPE GUIDES USED IN CONNECTION WITH EXPANSION JOINTS OR LOOPS ARE TO BE THE PRE-FABRICATED TYPE WITH INTEGRAL RUBBER ISOLATION.

- NOTES:**
- 1 WATER METER ASSEMBLY c/w BACK WATER VALVE AND EXPANSION TANK PER CITY'S STANDARDS. SEE DETAILS ON DUGH-17.
 - 2 1/2" CIRCUIT BALANCING VALVE AT TOP OF EACH DHW RISER UNLESS OTHERWISE SPECIFIED (TYPICAL)
 - 3 1/2" SHUT-OFF VALVE FOR EACH SUITE. (TYPICAL)
 - 4 SET AT 120°F DHW & COMBINED DCU & DHWR TO MAINTAIN MAXIMUM SUPPLY TEMPERATURE AT 120°F.
 - 5 BYPASS HAS ONCE DHW SUPPLY TEMPERATURE REACHES 140°F.
 - 6 1/2" DCU & 1/2" DHW.
 - 7 1/2" DCU & 1/2" DHW.
 - 8 3/2" DCU & 2 1/2" DHW.
 - 9 3/2" DCU & 3 1/2" DHW.
 - 10 THERMOMETER AND PRESSURE GAUGE.



NO.	DATE	REVISION	BY
1		ISSUED FOR PERMIT	E.P.
2		ISSUED FOR PERMIT	E.P.
3		ISSUED FOR PERMIT	E.P.

REVISIONS

CONTRACTOR MUST CHECK AND VERIFY ALL DIMENSIONS AND CONDITIONS ON THE JOB AND REPORT DISCREPANCIES TO THE ENGINEER OF RECORD IMMEDIATELY UPON DISCOVERY. THE SIGNATURE OF THE ENGINEER AND THAT BE RETURNED UPON COMPLETION OF THE WORK.

DRAWINGS ARE NOT TO BE SCALED.

NOVA
PROFESSIONAL ENGINEERING
REGISTERED PROFESSIONAL ENGINEER
EDUC. REG. NO. 10000
PROV. OF ONTARIO

175 West Beaver Creek Road, Unit 31
Richmond Hill, Ontario L4B 3M1
Tel: 905-883-5445
Fax: 905-882-5441
Email: cad@novatrend.com

DRAWN BY: G.S.
PROJECT NUMBER: 1313
DATE: FEB, 13

CHECKED BY: E.P.
PROJECT NUMBER: 1313
DATE: FEB, 13

SCALE: N.T.S.
DRAWING NUMBER: M-35
OF 35

PROJECT TITLE: ALEXANDRA PARK
DRAWING TITLE: DCU, DHW & DHWR RISER DIAGRAM