

REFER TO DWG. M-3 FOR GENERAL AND ACOUSTIC NOTES

3800mm CLEAR FLOOR TO UNDERSLAB

KEYNOTES:

- 1 150# FIRE LINE CONNECTION FROM SITE SERVICE. SEE SPRINKLER DRAWING FOR CONTINUATION.
- 2 100# DCW MAIN CONNECTION FROM SITE SERVICE.
- 3 300# SAN LEAVING PIPE @ 2% AT INV. 89.00.
- 4 1200# MANHOLE BY OTHERS.
- 5 375# STORM LEAVING PIPE @ 2% AT INV. 91.13
- 6 100# DCW (LZ) & 100# DCW (HZ) UP TO G/F.
- 7 15# DHW (LZ) UP TO G/F.
- 8 50# DHW (LZ) FROM ABOVE.
- 9 100# SAN @ 1% ON CEILING OF P-2.
- 10 100# SAN DOWN.
- 11 HEATED FLENUM BELOW TOWNHOUSES BY OTHERS.
- 12 150# SAN FROM ABOVE.
- 13 200# SAN FROM ABOVE.
- 14 100# SAN @ 1%.
- 15 150# SAN @ 1%.
- 16 200# SAN @ 1%.
- 17 300# SAN @ 1%.
- 18 250# SAN DOWN, c/w CLEANOUT AT BASE AND CONNECT TO SITE SERVICE LEAVING SAN MAIN/ON P-2.
- 19 15# SAN PUMPED FROM BELOW c/w HEAT TRACING. HEAT TRACING BY DIV. 16. INSULATION & JACKET BY THIS CONTRACTOR.
- 20 50# DCW & 38# DHW FROM ABOVE.
- 21 38# DCW & 32# DHW.
- 22 50# DCW & 38# DHW.
- 23 63# DCW & 50# DHW FROM ABOVE.
- 24 63# DCW & 50# DHW.
- 25 32# DCW & 25# DHW.
- 26 50# CONDENSATE PIPE CONNECT INDIRECTLY TO THE NEAREST WASTE.
- 27 50# CONDENSATE PIPE FROM ABOVE.
- 28 19# CONDENSATE PIPE CONNECT INDIRECTLY TO THE NEAREST WASTE.
- 29 DRAIN TRAP TO BE HEAT TRACED BY DIV. 16. THIS CONTRACTOR TO INSULATE & JACKET (TYPICAL).
- 30 100# SAN FROM ABOVE.
- 31 13# DCW & 13# DHW DOWN TO SERVE (1) KITCHEN SINK.
- 32 13# DCW & 13# DHW TO SERVE (1) DISHWASHER.
- 33 13# DCW DOWN TO SERVE (1) WATER CLOSET.
- 34 13# DCW & 13# DHW DOWN TO SERVE (1) SHOWER.
- 35 13# DCW & 13# DHW DOWN TO SERVE (1) LAVATORY.
- 36 19# DCW & 13# DHW.
- 37 19# CONDENSATE PIPE FROM ABOVE.
- 38 100# RUL FROM ABOVE.
- 39 100# STM @ 1%.
- 40 250# RUL FROM ABOVE.
- 41 150# STM @ 1%.
- 42 200# STM @ 1%.
- 43 250# STM @ 1%.
- 44 300# STM @ 1%.
- 45 200# RUL FROM ABOVE.
- 46 15# STM PUMPED FROM BELOW c/w HEAT TRACING. HEAT TRACING BY DIV. 16. INSULATION & JACKET BY THIS CONTRACTOR.
- 47 250# SAN @ 1%.
- 48 25# DCW FOR WHIRLPOOL EQUIPMENT.
- 49 DOUBLE SLAB. Δ
- 50 38# UP TO G/F FOR IRRIGATION CONNECTION.
- 51 38# DCW MAKE-UP WATER LINE FOR IRRIGATION C/W REDUCE PRESSURE BACK FLOW PREVENTER. SEE IRRIGATION DRAWING FOR DETAILS.
- 52 38# IRRIGATION PIPE C/W SHUT OFF & DRAIN VALVE UP TO G/F CAPPED POINT FOR CONNECTION. SEE IRRIGATION DRAWING FOR DETAILS.
- 53 38# IRRIGATION PIPE.
- 54 32# IRRIGATION PIPE C/W SHUT OFF & DRAIN VALVE UP TO G/F CAPPED POINT FOR CONNECTION. SEE IRRIGATION DRAWING FOR DETAILS.
- 55 WHIRLPOOL DRAIN EXACT LOCATION TO BE CONFIRMED BY WHIRLPOOL CONSULTANT.

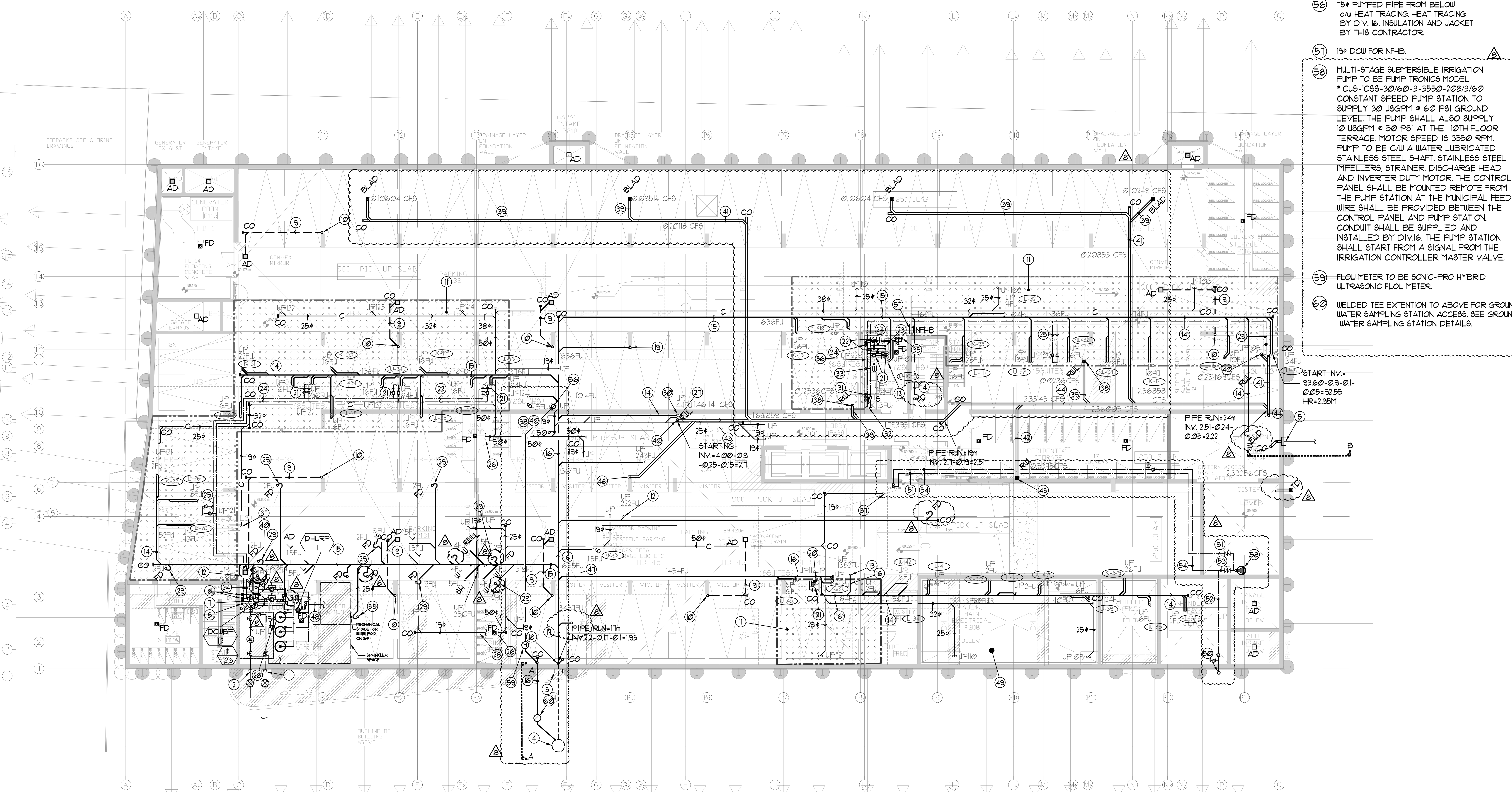
56 15# PUMPED PIPE FROM BELOW c/w HEAT TRACING. HEAT TRACING BY DIV. 16. INSULATION AND JACKET BY THIS CONTRACTOR.

57 19# DCW FOR NFHB.

58 MULTI-STAGE SUBMERSIBLE IRRIGATION PUMP TO BE PUMP TRONICS MODEL # CUS-IC55-30/60-3-3550-200/3/60 CONSTANT SPEED PUMP STATION TO SUPPLY 30 USGPM @ 60 PSI GROUND LEVEL. THE PUMP SHALL ALSO SUPPLY 10 USGPM @ 50 PSI AT THE 10TH FLOOR TERRACE. MOTOR SPEED IS 3550 RPM. PUMP TO BE C/W A WATER LUBRICATED STAINLESS STEEL SHAFT, STAINLESS STEEL IMPELLERS, STRAINER DISCHARGE HEAD AND INVERTER DUTY MOTOR. THE CONTROL PANEL SHALL BE MOUNTED REMOTE FROM THE PUMP STATION AT THE MUNICIPAL FEED. WIRE SHALL BE PROVIDED BETWEEN THE CONTROL PANEL AND PUMP STATION. CONDUIT SHALL BE SUPPLIED AND INSTALLED BY DIV. 16. THE PUMP STATION SHALL START FROM A SIGNAL FROM THE IRRIGATION CONTROLLER MASTER VALVE.

59 FLOW METER TO BE SONIC-FRO HYBRID ULTRASONIC FLOW METER.

60 WELDED TEE EXTENSION TO ABOVE FOR GROUND WATER SAMPLING STATION ACCESS. SEE GROUND WATER SAMPLING STATION DETAILS.



LEGEND MECHANICAL

SYMBOL	DESCRIPTION
[Symbol]	APPLY AIR DIFFUSER
[Symbol]	APPLY AIR TRAP
[Symbol]	LINEAR SUPPLY DIFFUSER
[Symbol]	FAN NOISE
[Symbol]	RETURN AIR GRILLE
[Symbol]	EXHAUST AIR GRILLE
[Symbol]	APPLY DUCT UP
[Symbol]	APPLY DUCT DOWN
[Symbol]	RETURN DUCT UP
[Symbol]	RETURN DUCT DOWN
[Symbol]	EXHAUST DUCT UP
[Symbol]	EXHAUST DUCT DOWN
[Symbol]	FIRE DAMPER
[Symbol]	BALANCING DAMPER
[Symbol]	375# STORM LEAVING PIPE
[Symbol]	MOTORIZED DAMPER
[Symbol]	MOTORIZED FIRE DAMPER
[Symbol]	BACKDRIFT DAMPER
[Symbol]	OPPOSED BLADE VOLUME CONTROL DAMPER
[Symbol]	CO2 LOCKING DAMPER
[Symbol]	TURNS VAVES
[Symbol]	FLEXIBLE CONNECTION
[Symbol]	ACOUSTIC INSULATION
[Symbol]	TYPE OF EQUIPMENT
[Symbol]	EQUIPMENT IDENTIFICATION
[Symbol]	TYPE OF CHIMNEY OR GRILLE
[Symbol]	SMALL OR OFFSHORE HEAT KEEPER
[Symbol]	ANULOUS (ON OR LSI)
[Symbol]	STEAMER / 3 PHASE / PHASE
[Symbol]	IN-SITE SW WATER METER
[Symbol]	FAN SWITCH / IN-SITE SW OVERRIDE BUTTON
[Symbol]	CO SENSOR
[Symbol]	GAS LINE
[Symbol]	GAS METER
[Symbol]	SWR SOCK
[Symbol]	PRESSURE REDUCING VALVE
[Symbol]	BANITARY ABOVE GRADE
[Symbol]	BANITARY BELOW GRADE
[Symbol]	STORM ABOVE GRADE
[Symbol]	STORM BELOW GRADE
[Symbol]	DOPHETIC COLD WATER
[Symbol]	DOPHETIC HOT WATER
[Symbol]	DOPHETIC HOT WATER RECIRCULATION
[Symbol]	BANITARY VENT
[Symbol]	WATER METER
[Symbol]	FLOOR DRAIN
[Symbol]	ROOF DRAIN
[Symbol]	AREA DRAIN
[Symbol]	BI-LEVEL AREA DRAIN
[Symbol]	CATCH BASIN
[Symbol]	BANITARY TRAP
[Symbol]	ELBOW UP
[Symbol]	ELBOW DOWN
[Symbol]	WALL CLEANOUT
[Symbol]	FLOOR CLEANOUT
[Symbol]	HOSE BIBBS
[Symbol]	NON-PRESSURE HOSE BIBBS
[Symbol]	GATE VALVE
[Symbol]	BALL VALVE
[Symbol]	BUTTERFLY VALVE
[Symbol]	PRESSURE REDUCING VALVE
[Symbol]	GAUGE VALVE
[Symbol]	CAP
[Symbol]	COPRESSURED AIR OUTLET
[Symbol]	BACKUP PREVENTER
[Symbol]	CIRCUIT BALANCING VALVE
[Symbol]	MULTIPLE PIPES
[Symbol]	DIMETER NO. OF PIPES
[Symbol]	TEMPERATURE SENSOR
[Symbol]	THERMISTOR
[Symbol]	3-WAY MODULATING VALVE
[Symbol]	3-WAY MODULATING VALVE
[Symbol]	10' HATED THERMISTOR
[Symbol]	CU 1/2" BURNING & 1/2" PLUGS
[Symbol]	FLOOR ELEVATION ABOVE LEVEL
[Symbol]	HEADROOM FLOOR TO US LEVEL

NO.	DATE	DESCRIPTION	BY
1		BASED FOR SITE INSTRUCTION #15	EP
2		BASED FOR SITE INSTRUCTION #14	EP
3		BASED FOR CITY COMMENTS	EP
4		BASED FOR SITE INSTRUCTION #15	EP
5		BASED FOR SITE INSTRUCTION #14	EP
6		BASED FOR REVIEW	EP
7		RE-BASED FOR PERMIT	EP
8		BASED FOR PERMIT	EP
9			BT

NOVA ENGINEERING

175 West Beaver Creek Road Unit 31
Richmond Hill, Ontario L4B 3M1
Tel: 905-882-5445
Fax: 905-882-5441

REVISIONS

CONTRACTOR MUST CHECK AND VERIFY ALL DIMENSIONS AND CONDITIONS ON THE JOB AND REPORT DISCREPANCIES TO THE ENGINEER BEFORE PROCEEDING WITH THE WORK. THIS DRAWING IS THE PROPERTY OF THE ENGINEER AND NOT BE REPRODUCED FOR COPIES OF THE WORK.

DRAWINGS ARE NOT TO BE SCALED

NOVA ENGINEERING

175 West Beaver Creek Road Unit 31
Richmond Hill, Ontario L4B 3M1
Tel: 905-882-5445
Fax: 905-882-5441

DRAWING TITLE
P-1 FLOOR PLAN
BLOCK II
F4D LAYOUT

PROJECT TITLE
60 ALEXANDRA PARK
BLOCK II
38 CAMERON STREET
TORONTO

DESIGNED BY G.S. **SCALE** 1:100
DATE FEB 13 1313 **DRAWING NUMBER** M-5 OF 45

Drawn by: G.S. / Checked by: E.P. / Date: FEB 13 1313 / Scale: 1:100 / Project: 60 ALEXANDRA PARK BLOCK II / Drawing: M-5 OF 45