

UNIT	NAME	AREA (SQ. FT.)	# OF UR	# OF POWDER	SIZE (T)	FIXTURE UNITS	BR	SQ. FT./T
014	IC-D1	590	2	0	1	16	1	590
015	IC-DC1	590	2	0	1	16	1	590
016	IC-DF1	605	2	0	1	16	1	605
017	ID3	480	1	0	1	10	1	480
019	2E	675	2	0	15	16	2	450
021	2C3	670	2	0	15	16	2	441
023	IC-DD1	605	2	0	1	16	1	605
024	IC-DG1	620	2	0	1	16	1	620
026	IC-D1	590	2	0	1	16	1	590
027	2K4	730	2	0	15	16	2	481

GRILLE SIZING TABLE			VERTICAL FAN COIL SIZE		
DESIGNATION	SIZE	L/S (UNLESS SPECIFIED OTHERWISE)	DESIGNATION	MODEL	W x D
SG-A	300x100	47-10	FCU-1T	450	500x660
SG-B	300x150	71-93	FCU-1ST	600	500x660
SG-C	400x150	94-140	FCU-2T	800	500x660
SG-D	450x150	141-188	FCU-2ST	1000	550x660
EG-A	150x150	35	FCU-3T	1200	550x660
W-1	225x200	210mm(L)	NOTE: A MIN. OF 125mm IS REQUIRED ON THE SIDE OF PIPE RISER.		
W-2	425x200	INSULATED			
W-3	625x200	WALL BOX			

DUCT SIZING TABLE			DUCT SIZING TABLE		
DESIGNATION	L/S	DUCT SIZE	DESIGNATION	L/S	DUCT SIZE
(A)	47	100x150	(G)	109	350x150
(B)	71	150x150	(H)	236	450x150
(C)	94	200x150	(J)	283	500x150
(D)	118	200x150	(K)	330	600x150
(E)	141	250x150	(L)	371	500x200
(F)	165	300x150			

ACOUSTIC NOTES:

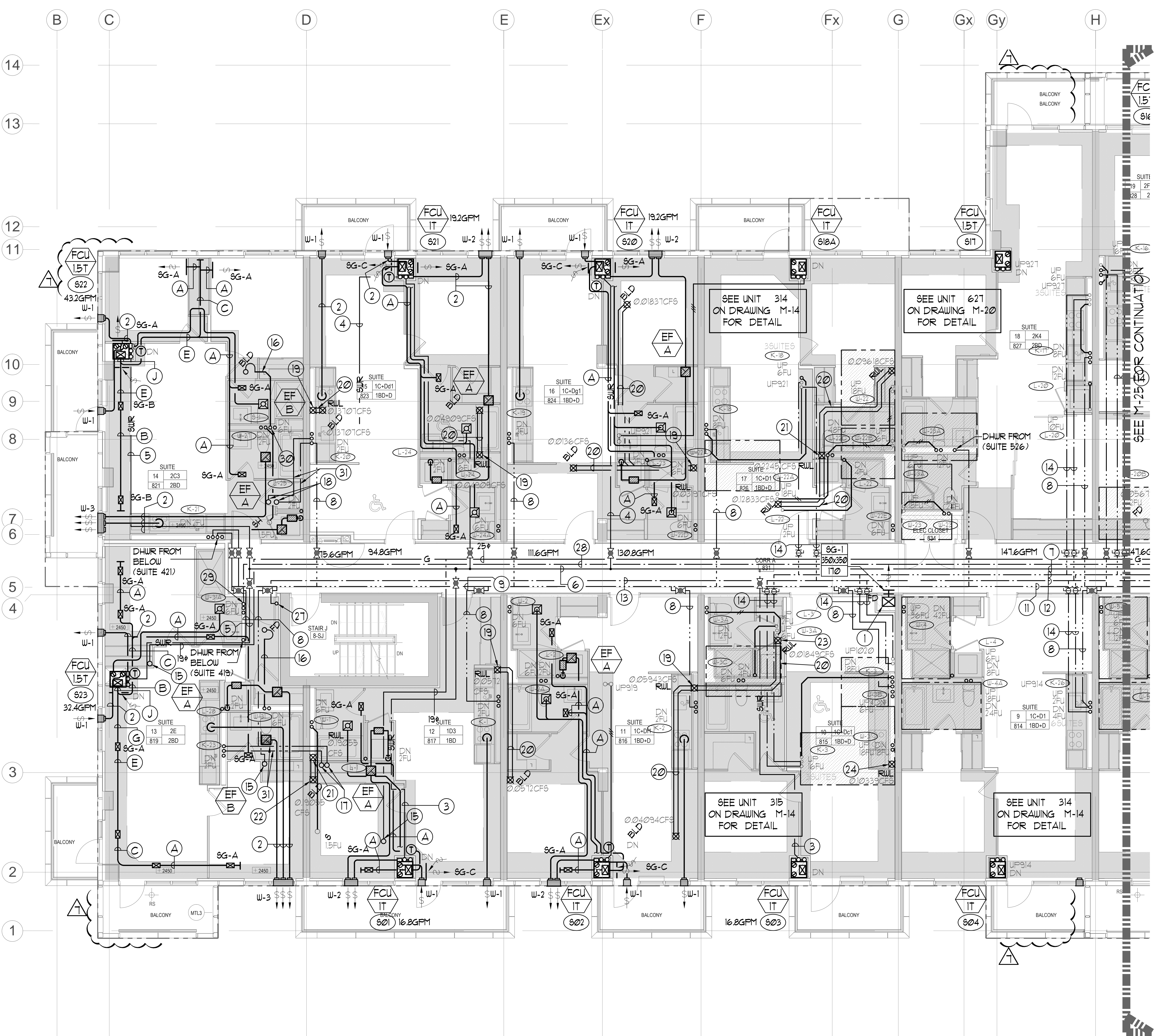
- ALL HORIZONTAL SUPPLY AIR DUCTWORK SHALL BE 25MM INTERNAL ACOUSTIC LINING AND SHALL BE SUSPENDED ON RUBBER PADS IN THE HANGERS. ELBOWS SHALL BE COMPLETE WITH TURNING VANES.
- ALL SYSTEM/DOMESTIC PIPE LOOPS OR OFFSETS WHICH ARE 50MM DIA. AND LARGER SHALL BE ISOLATED USING NEOPRENE-N-SHEAR HANGERS, AND ADDITIONAL 25 MM THICK RIBBED OR WAFFLED NEOPRENE PADS IN THE SADDLES OF CLEVIS HANGERS.
- ALL PIPES SMALLER THAN 50MM DIA. SHALL BE ISOLATED WITH 5MM THICK RIBBED OR WAFFLED RUBBER PADS IN HANGER SADDLES.

GENERAL NOTES:

- CONTRACTOR SHALL CO-ORDINATE ARCHITECTURAL, STRUCTURAL, LIGHTING, HVAC, SPRINKLER DRAWINGS TO AVOID AREAS OF CONFLICT AND TO MAINTAIN CEILING HEIGHTS.
- CONTRACTOR SHALL REPORT ALL DISCREPANCIES AND AREA OF CONFLICTS TO THE ENGINEER PRIOR TO WORK BEGINS.
- PROVIDE EXPANSION CHAMBERS FOR ALL KITCHEN SINKS.
- SEE INSTALLATION DETAILS DRAWING FOR WASHER DOM. H4C WATER, SANITARY CONNECTION DETAILS.
- SUPPLY AND INSTALL COMPLETE DOMESTIC HOT AND COLD WATER LINES, SANITARY AND VENT LINES TO EACH FIXTURE, EQUIPMENT INCLUDING WATER CLOSETS, LAVATORIES, BATHS, SHOWERS, KITCHEN SINK, WASHING MACHINES, DISHWASHERS, AND FLOOR DRAINS, KITCHEN SINK, LAVATORIES, WATER CLOSETS AND WASHING MACHINE TO BE CAU LOCALIZED SHUT-OFF VALVES.
- ALL VENT PIPE INSTALLATION TO COMPLY WITH PLUMBING CODES.
- FOR D.H4C. W. RISER SIZES, REFER TO RISER DIAGRAM
- FIRE DAMPERS ARE REQUIRED TO BE LISTED AND ARE TO HAVE FIRE PROTECTION RATING OF THE PENETRATED FIRE SEPARATION.
- THE PIPING PENETRATING THE VARIOUS FIRE SEPARATION IS REQUIRED TO BE FIRESTOPPED WITH A LISTED FIRESTOPPING MATERIAL IN ACCORDANCE WITH OBC ARTICLE 3.13.1
- THE FIRE HOSE CABINET THAT ARE RECESSED INTO THE EXIT STAIR SHAFTS ARE REQUIRED TO BE SEPARATED FROM THE EXIT STAIR BY A 2 HR FIRE SEPARATION.
- NO FLEXIBLE DUCT SHALL BE USED FOR ANY IN-SUITE DUCTWORK.
- PROVIDE 25MM EXTERNAL INSULATION TO ENTIRE FRESH AIR DUCT FROM EXTERIOR WALL TO ERV FAN COIL UNIT.
- DRYER EXHAUST DUCT SHALL BE SMOOTH AND CORROSION-RESISTANT MATERIAL. (FLEXIBLE CONNECTION IS NOT ACCEPTABLE).

LEGEND MECHANICAL

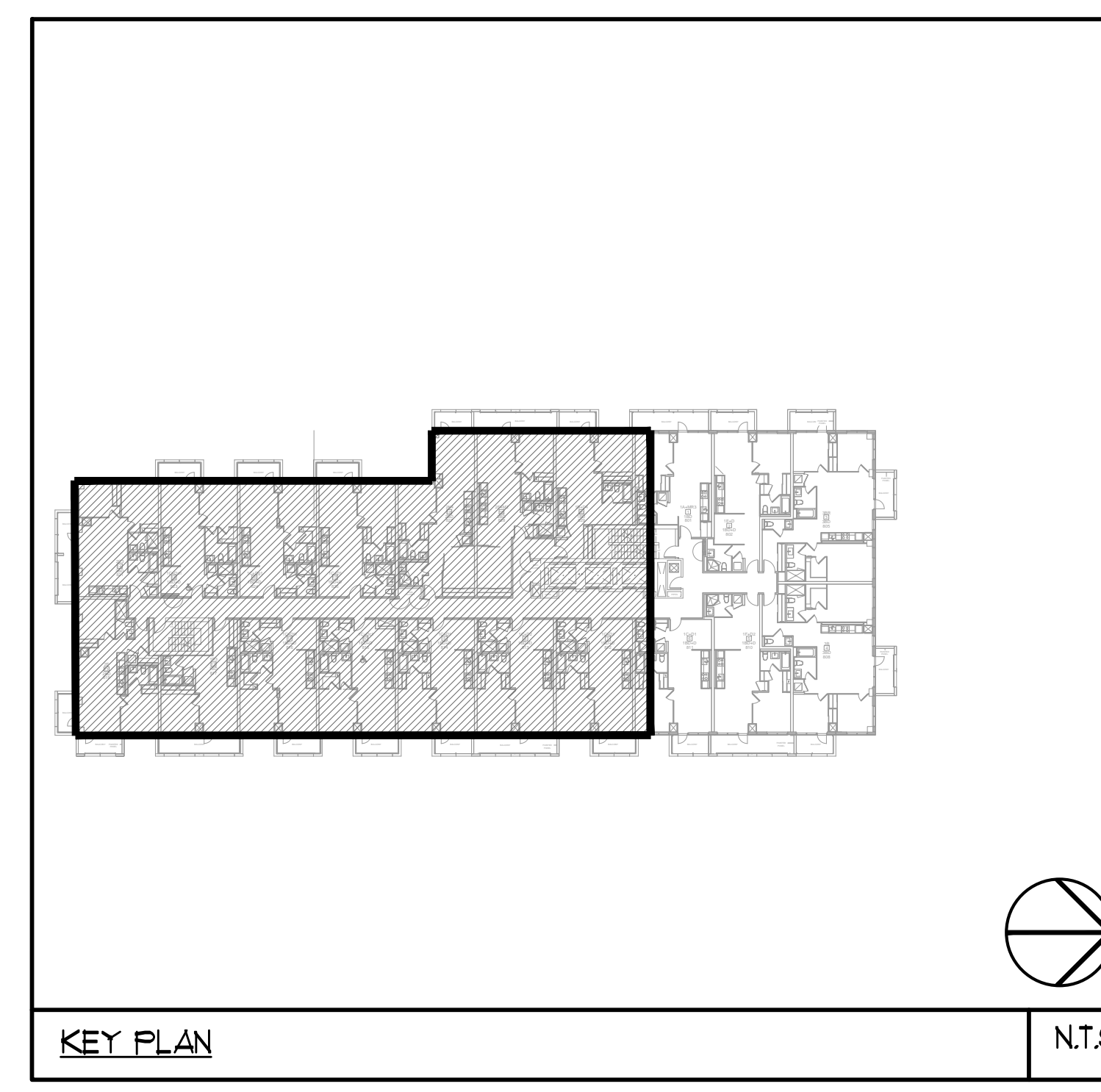
SYMBOL	DESCRIPTION
[Symbol]	APPLY AIR DRIVER
[Symbol]	APPLY AIR TRIPPER
[Symbol]	LINEAR SUPPLY DRIVER
[Symbol]	THERMOSTAT
[Symbol]	FAN MOTOR
[Symbol]	RETURN AIR GRILLE
[Symbol]	EXHAUST AIR GRILLE
[Symbol]	APPLY DUCT UP
[Symbol]	APPLY DUCT DOWN
[Symbol]	RETURN DUCT UP
[Symbol]	RETURN DUCT DOWN
[Symbol]	EXHAUST DUCT UP
[Symbol]	EXHAUST DUCT DOWN
[Symbol]	FIRE DAMPER
[Symbol]	BALANCING DAMPER
[Symbol]	INSULATED DAMPER
[Symbol]	NOTORIZED FIRE DAMPER
[Symbol]	BACKDRIFT DAMPER
[Symbol]	OPPOSED BLADE VOLUME CONTROL DAMPER
[Symbol]	TURNING VANES
[Symbol]	FLEXIBLE CONNECTION
[Symbol]	ACOUSTIC INSULATION
[Symbol]	TYPE OF EQUIPMENT
[Symbol]	TYPE OF CONNECTION
[Symbol]	TYPE OF DAMPER OR GRILLE
[Symbol]	SMALL SIZE OR OFFSHORE WIRE
[Symbol]	ANALOG (OH OR LA)
[Symbol]	SEPARATOR 3 PHASE / PHASE 1
[Symbol]	FAN SWITCH / IN-SUITE ERV OVERRIDE BUTTON
[Symbol]	CO SENSOR
[Symbol]	GAS LINE
[Symbol]	GAS METER
[Symbol]	GAS SOLE
[Symbol]	PRESSURE REDUCING VALVE
[Symbol]	SANITARY ABOVE GRADE
[Symbol]	SANITARY BELOW GRADE
[Symbol]	OTHER ABOVE GRADE
[Symbol]	OTHER BELOW GRADE
[Symbol]	DOMESTIC COLD WATER
[Symbol]	DOMESTIC HOT WATER
[Symbol]	SANITARY VENT
[Symbol]	WATER PIPING
[Symbol]	FLOOR DRAIN
[Symbol]	RUNNEL FLOOR DRAIN
[Symbol]	WASH DRAIN
[Symbol]	ROOF DRAIN
[Symbol]	BLAD DRAIN
[Symbol]	AREA DRAIN
[Symbol]	BI-LEVEL AREA DRAIN
[Symbol]	CATCH BASIN
[Symbol]	SANITARY TRAP
[Symbol]	ELBOW UP
[Symbol]	ELBOW DOWN
[Symbol]	HOSE END
[Symbol]	NON-PRESSURE HOSE ENDS
[Symbol]	GATE VALVE
[Symbol]	BALL VALVE
[Symbol]	BUTTERFLY VALVE
[Symbol]	PRESSURE REDUCING VALVE
[Symbol]	CHECK VALVE
[Symbol]	CAP
[Symbol]	COMPRESSED AIR OUTLET
[Symbol]	BACKUP PRESSURE VALVE
[Symbol]	CIRCUIT BALANCING VALVE
[Symbol]	MULTIPLE PIPES
[Symbol]	DENOTES NO. OF PIPES
[Symbol]	TEMPERATURE SENSOR
[Symbol]	THERMISTOR
[Symbol]	3-WAY MODULATING VALVE
[Symbol]	3-WAY MODULATING VALVE
[Symbol]	10' WATED THERMISTOR
[Symbol]	CAU 10' BUSHING 4 1/2" PLUS
[Symbol]	FLOOR ELEVATION ABOVE LEVEL
[Symbol]	HEADROOM FLOOR TO CEILING



CLEAR FLOOR TO UNDERSLAB = 305mm
CLEAR PRODUCT = 210mm
COMPLETE DROP CEILING = 350mm
UNITS 016/017/019/021/023/024: DRAINS FROM AMENITY TERRACE ON 9/F

NOTES:

- SOUTH F/A SHAFT FROM G/F TO 8/F. DUCT SERVING CORRIDOR FROM G/F TO 8/F. SEE PRESSURIZATION / VENTILATION RISER DIAGRAM FOR DETAILS.
- 150+ KITCHEN / DRYER / W/R / FCU INTAKE / FCU EXHAUST DUCT. (TYPICAL UNLESS OTHERWISE NOTED)
- 32+ SUR
- 38+ SUR
- 50+ SUR
- 63+ SUR
- 75+ SUR
- 19+ DHUR
- 25+ DHUR
- 32+ DHUR
- 38+ DHUR
- 50+ DCW & 38+ DHU
- 25+ DCW
- REFER TO DCW, DHU & DHUR RISER DIAGRAM ON DRAWING M-36 FOR SIZING. (TYPICAL)
- 19+ GAS PIPE UP TO SERVE BBQ ON 9/F. EXACT LOCATION TO BE COORDINATED ON SITE.
- 100+ SAN 0%
- 19+ DCW & DHU UP TO SERVE (1) SINK ON 9/F - AMENITY SPACE.
- 19+ DCW & DHU UP TO SERVE (1) SHOWER ON 9/F - AMENITY SPACE.
- 100+ RUL DOWN.
- 100+ STM 0%.
- 150+ RUL DOWN.
- 150+ STM 0%.
- 100+ RUL FROM ABOVE.
- 100+ RUL FROM ABOVE AND DOWN.
- 150+ RUL FROM ABOVE.
- 32+ DCW & 25 DHU.
- 25+ DCW UP TO SERVE POOL MECHANICAL ROOM ON 9/F - AMENITY SPACE.
- 32+ IRRIGATION LINE TO SERVE GREEN ROOF.
- 100+ SAN DOWN.
- 19+ DCW & 19+ DHU FROM SUITE RISER TO AMENITY SINK/SHOWER. PIPE CONNECTION TO BE UPSTREAM OF SUITE METER.



NOVA ENGINEERING

175 West Beaver Creek Road Unit 31
 Richmond Hill, Ontario L4B 3M1
 Tel: 905-882-5445
 Fax: 905-882-5441

PROJECT TITLE: **SG ALEXANDRA PARK BLOCK II**
 38 CAMERON STREET TORONTO ONTARIO

DATE: FEB 13 2013

PROJECT NUMBER: 1313

DRAWING NUMBER: M-24

SCALE: 1:50

OF 45