

1 32" IRRIGATION
 2 15" DWUR
 3 100" DCU (HZ)
 4 50" DHUR (LZ)
 5 63" DHU (HZ)

UNIT	NAME	AREA (SQ. FT.)	# OF UR	# OF POWDER	SIZE (T)	FIXTURE UNITS	BR	SQ. FT/T
801	1A-MR3	525	1	0	1	10	1	525
802	1E-D	660	2	0	1	16	1	660
805	3BR	980	2	1	2	22	3	490
808	3B	980	2	1	2	22	3	490
810	1F-D2	660	2	0	1	16	1	660
811	1C-D1	590	2	0	1	16	1	590
812	1C-D1	590	2	0	1	16	1	590
813	1C-D2	590	2	0	1	16	1	590
828	2F-M2	705	2	0	15	16	2	410
829	1B-D4	580	1	0	1	10	1	580

GRILLE SIZING TABLE			VERTICAL FAN COIL SIZE		
DESIGNATION	SIZE	L/S (UNLESS OTHERWISE SPECIFIED)	DESIGNATION	MODEL	W X D
SG-A	300x100	41-10	FCU-1T	450	500x660
SG-B	300x150	71-93	FCU-15T	600	500x660
SG-C	400x150	94-140	FCU-2T	800	500x660
SG-D	450x150	141-188	FCU-25T	1000	550x660
EG-A	150x150	35	FCU-3T	1200	550x660
W-1	225x200	210mm(L)	NOTE: A MIN. OF 125mm IS REQUIRED ON THE SIDE OF PIPE RISER.		
W-2	425x200	INSULATED			
W-3	625x200	WALL BOX			

DUCT SIZING TABLE			DUCT SIZING TABLE		
DESIGNATION	L/S	DUCT SIZE	DESIGNATION	L/S	DUCT SIZE
(A)	41	100x150	(G)	109	350x150
(B)	71	150x150	(H)	236	450x150
(C)	94	200x150	(J)	283	500x150
(D)	118	200x150	(K)	330	600x150
(E)	141	250x150	(L)	377	500x200
(F)	165	300x150			

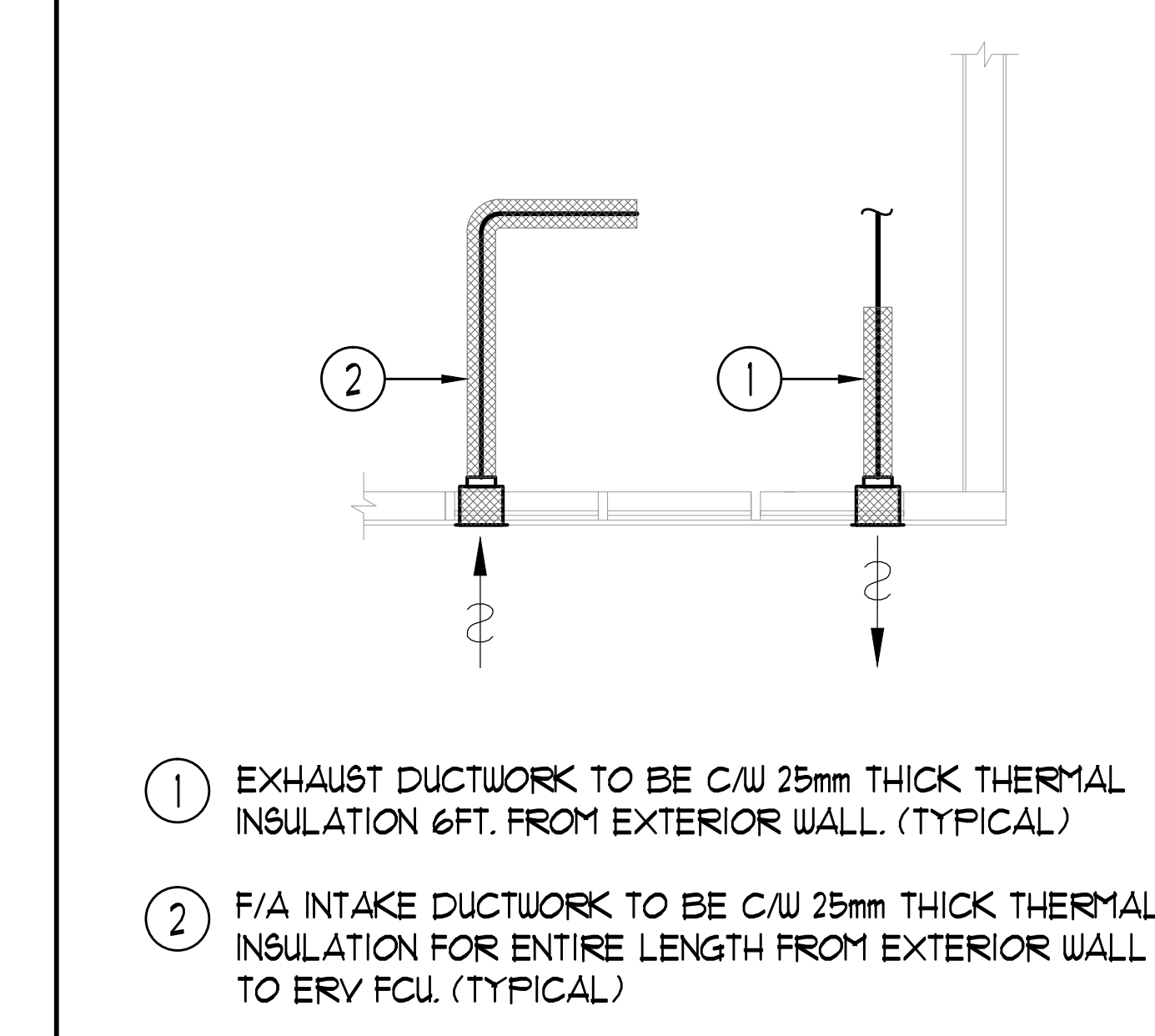
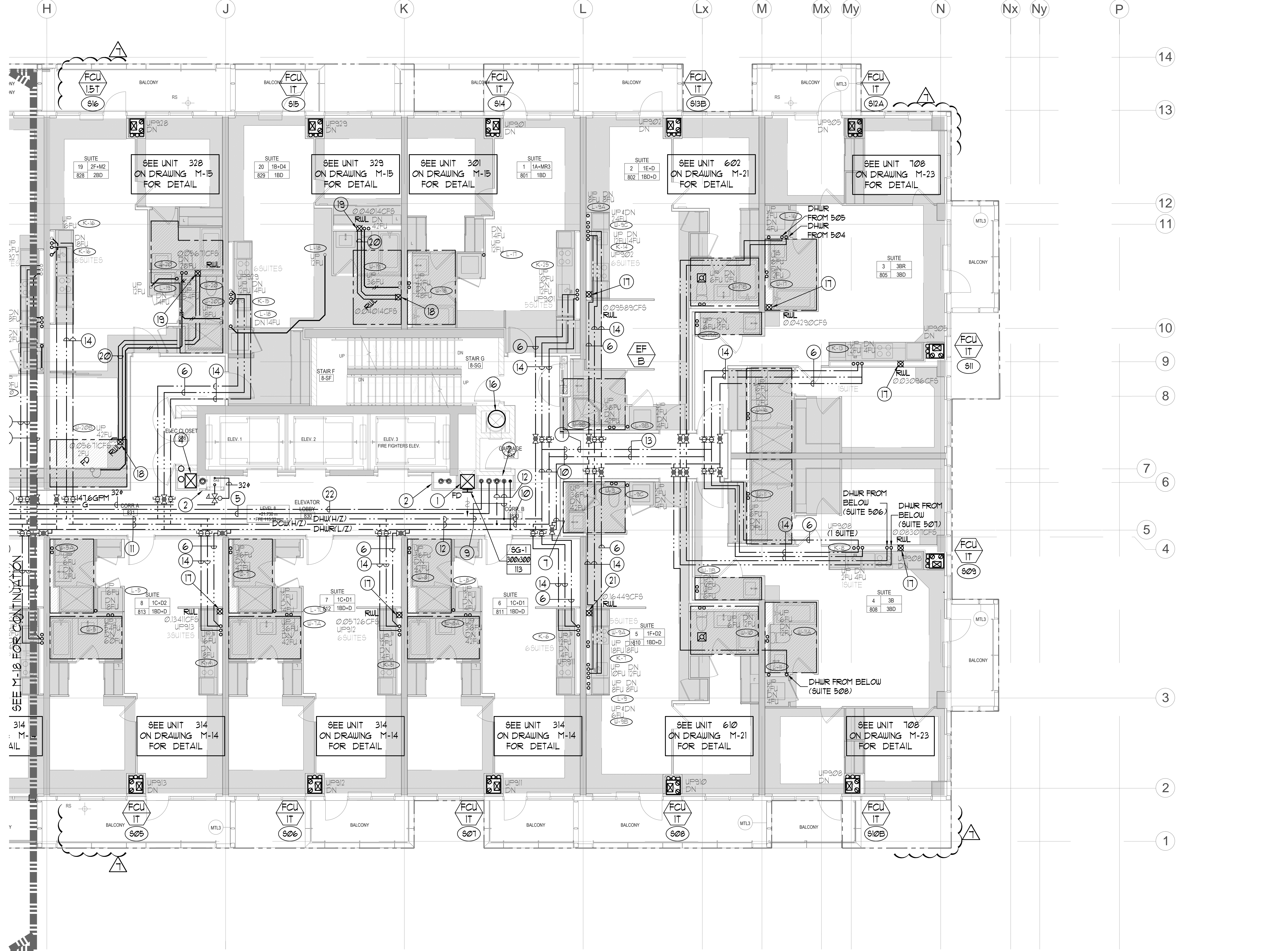
- GENERAL NOTES:
- CONTRACTOR SHALL CO-ORDINATE ARCHITECTURAL, STRUCTURAL, LIGHTING, HVAC, SPRINKLER DRAWINGS TO AVOID AREAS OF CONFLICT AND TO MAINTAIN CEILING HEIGHTS.
 - CONTRACTOR SHALL REPORT ALL DISCREPANCIES AND AREA OF CONFLICTS TO THE ENGINEER PRIOR TO WORK BEGINS.
 - PROVIDE EXPANSION CHAMBERS FOR ALL KITCHEN SINKS.
 - SEE INSTALLATION DETAILS DRAWING FOR WASHER DOW, H/C WATER, SANITARY CONNECTION DETAILS.
 - SUPPLY AND INSTALL COMPLETE DOMESTIC HOT AND COLD WATER LINES, SANITARY AND VENT LINES TO EACH FIXTURE EQUIPMENT INCLUDING WATER CLOSETS, LAVATORIES, BATHS, SHOWERS, KITCHEN SINK, WASHING MACHINES, DISHWASHERS, AND FLOOR DRAINS, KITCHEN SINK, LAVATORIES, WATER CLOSETS AND WASHING MACHINE TO BE C/W LOCALIZED SHUT-OFF VALVES.
 - ALL VENT PIPE INSTALLATION TO COMPLY WITH PLUMBING CODES.
 - FOR D.H.C. W. RISER SIZES, REFER TO RISER DIAGRAM
 - FIRE DAMPERS ARE REQUIRED TO BE LISTED AND ARE TO HAVE FIRE PROTECTION RATING OF THE PENETRATED FIRE SEPARATION.
 - THE PIPING PENETRATING THE VARIOUS FIRE SEPARATION IS REQUIRED TO BE FIRESTOPPED WITH A LISTED FIRESTOPPING MATERIAL IN ACCORDANCE WITH CBC ARTICLE 3.13.1
 - THE FIRE HOSE CABINET THAT ARE RECESSED INTO THE EXIT STAIR SHAFTS ARE REQUIRED TO BE SEPARATED FROM THE EXIT STAIR BY A 2 HR FIRE SEPARATION.
 - NO FLEXIBLE DUCT SHALL BE USED FOR ANY IN-SUITE DUCTWORK.
 - PROVIDE 25MM EXTERNAL INSULATION TO ENTIRE FRESH AIR DUCT FROM EXTERIOR WALL TO ERY FAN COIL UNIT.
 - DRYER EXHAUST DUCT SHALL BE SMOOTH AND CORROSION-RESISTANT MATERIAL (FLEXIBLE CONNECTION IS NOT ACCEPTABLE).

LEGEND MECHANICAL

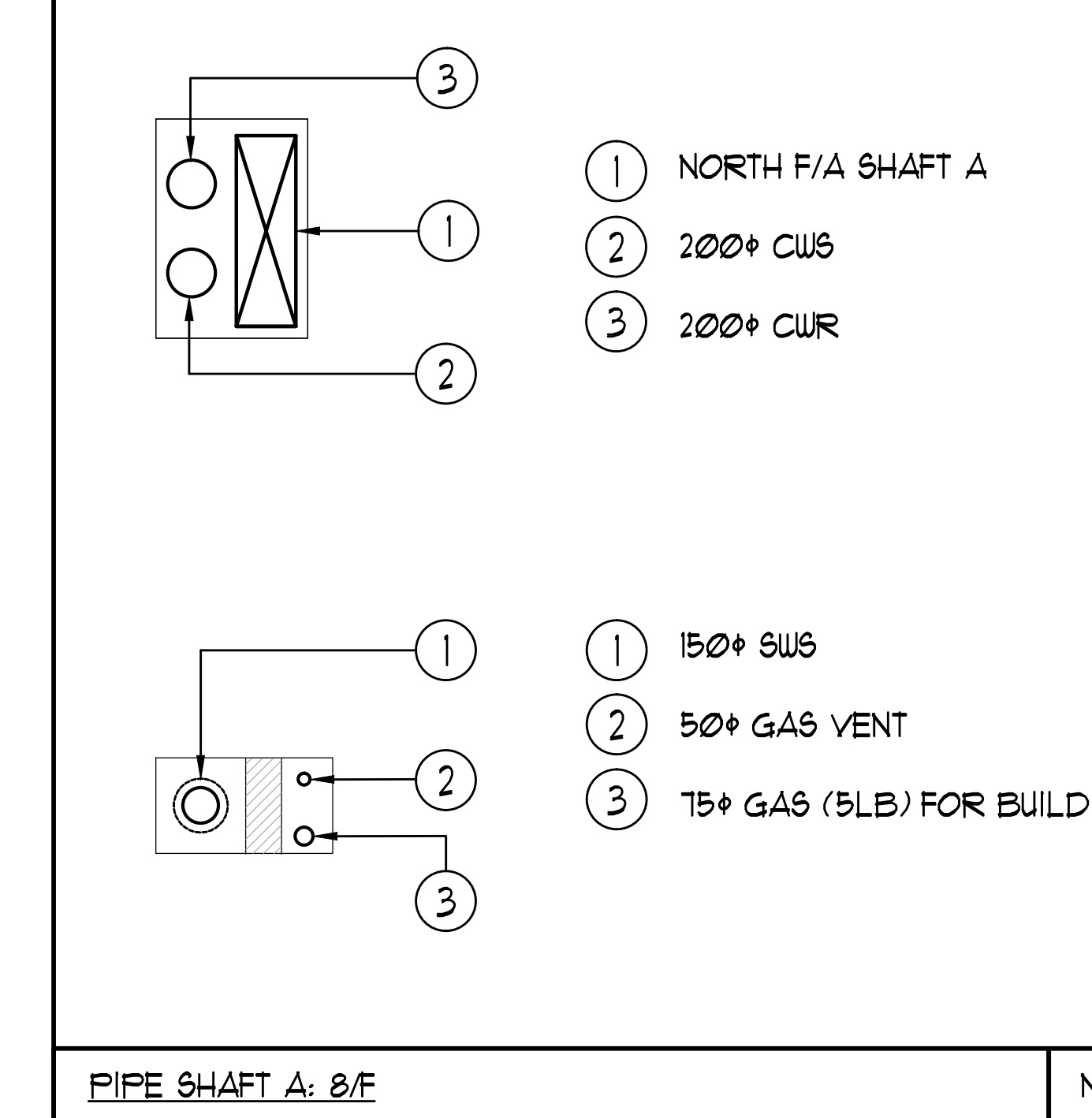
SYMBOL	DESCRIPTION
[Symbol]	APPLY AIR DRAINER
[Symbol]	APPLY AIR TRAP
[Symbol]	LINEAR SUPPLY DIFFUSER
[Symbol]	THERMOSTAT
[Symbol]	FAN MOTOR
[Symbol]	RETURN AIR GRILLE
[Symbol]	EXHAUST AIR GRILLE
[Symbol]	APPLY DUCT UP
[Symbol]	APPLY DUCT DOWN
[Symbol]	RETURN DUCT UP
[Symbol]	RETURN DUCT DOWN
[Symbol]	EXHAUST DUCT UP
[Symbol]	EXHAUST DUCT DOWN
[Symbol]	FIRE DAMPER
[Symbol]	BALANCING DAMPER
[Symbol]	MOTORIZED DAMPER
[Symbol]	MOTORIZED FIRE DAMPER
[Symbol]	BACKDRIFT DAMPER
[Symbol]	OPPOSED BLADE VOLUME CONTROL DAMPER
[Symbol]	C/W LOCKING DAMPER
[Symbol]	TURNING VANES
[Symbol]	FLEXIBLE CONNECTION
[Symbol]	ACOUSTIC INSULATION
[Symbol]	TYPE OF EQUIPMENT
[Symbol]	TYPE OF CONNECTION
[Symbol]	TYPE OF RISER OR GRILLE
[Symbol]	SMALL RISER OR OFFSHOOT RISER
[Symbol]	ANNUAL (CH OR LA)
[Symbol]	SEWER (3 PHASE / PHASE)
[Symbol]	IN-SUITE ERY WATER BATH
[Symbol]	FAN SWITCH / IN-SUITE ERY OVERRIDE BUTTON
[Symbol]	CO SENSOR
[Symbol]	GAS LINE
[Symbol]	GAS METER
[Symbol]	GAS SOLE
[Symbol]	PRESSURE REDUCING VALVE
[Symbol]	SANITARY ABOVE GRADE
[Symbol]	SANITARY BELOW GRADE
[Symbol]	BTOM ABOVE GRADE
[Symbol]	BTOM BELOW GRADE
[Symbol]	DOMESTIC HOT WATER
[Symbol]	DOMESTIC HOT WATER REGULATION
[Symbol]	SANITARY VENT
[Symbol]	WATER PIPES
[Symbol]	FLOOR DRAIN
[Symbol]	RUNNEL FLOOR DRAIN
[Symbol]	ALB DRAIN
[Symbol]	ROOF DRAIN
[Symbol]	ALB DRAIN
[Symbol]	AREA DRAIN
[Symbol]	BI-LEVEL AREA DRAIN
[Symbol]	CATCH BASIN
[Symbol]	SANITARY TRAP
[Symbol]	ELBOW UP
[Symbol]	ELBOW DOWN
[Symbol]	WALL CLEANOUT
[Symbol]	FLOOR CLEANOUT
[Symbol]	GLUE VALVE
[Symbol]	NON-PRESSURE HOSE BIBBS
[Symbol]	GATE VALVE
[Symbol]	BALL VALVE
[Symbol]	BUTTERFLY VALVE
[Symbol]	PRESSURE REDUCING VALVE
[Symbol]	CHECK VALVE
[Symbol]	CAP
[Symbol]	COMPRESSED AIR OUTLET
[Symbol]	BACKUP FOR CENTER
[Symbol]	CIRCUIT BALANCING VALVE
[Symbol]	MULTIPLE PIPES
[Symbol]	DENOTES NO. OF PIPES
[Symbol]	TEMPERATURE SENSOR
[Symbol]	THERMISTOR
[Symbol]	3-WAY MODULATING VALVE
[Symbol]	3-WAY MODULATING VALVE
[Symbol]	17-WAY THERMOSTAT
[Symbol]	C/W 1/2" BUSHING & 1/2" PLUG
[Symbol]	FLOOR ELEVATION ABOVE LEVEL
[Symbol]	HEADROOM FLOOR TO US LEVEL

ACOUSTIC NOTES:

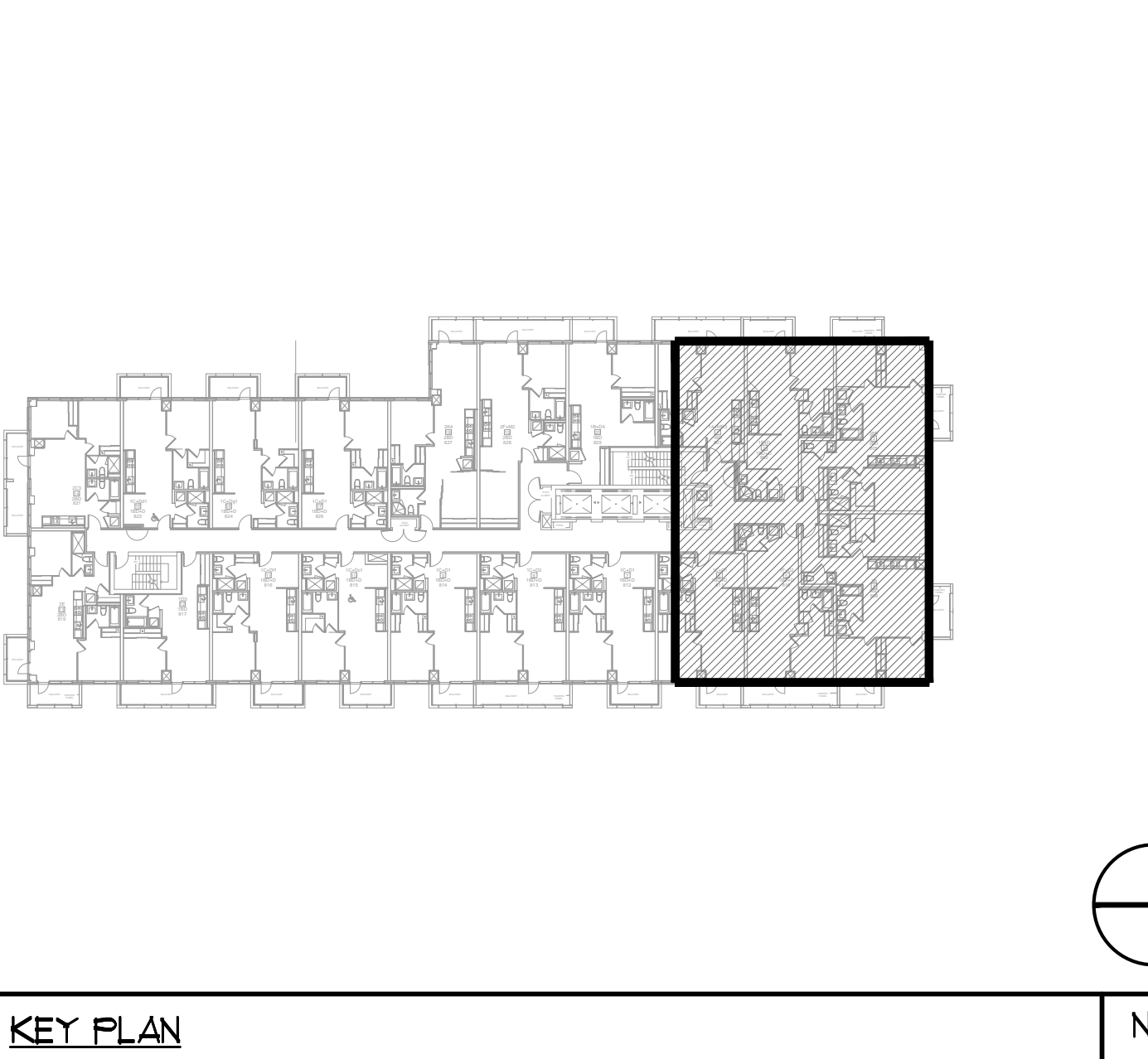
- ALL HORIZONTAL SUPPLY AIR DUCTWORK SHALL BE C/W 25MM INTERNAL ACOUSTIC LINING AND SHALL BE SUSPENDED ON RUBBER PADS IN THE HANGERS. ELBOWS SHALL BE COMPLETE WITH TURNING VANES.
- ALL SYSTEM/DOMESTIC PIPE LOOPS OR OFFSETS WHICH ARE 50MM DIA. AND LARGER SHALL BE ISOLATED USING NEOPRENE-N-SHEAR HANGERS, AND ADDITIONAL 25MM THICK RIBBED OR WAFFLED NEOPRENE PADS IN THE SADDLES OF CLEVIS HANGERS.
- ALL PIPES SMALLER THAN 50MM DIA. SHALL BE ISOLATED WITH 5MM THICK RIBBED OR WAFFLED RUBBER PADS IN LAYER SADDLES.



TYPICAL DETAIL INSULATION FOR INTAKE/EXHAUST DUCTWORK NTS



PIPE SHAFT A: 2/F NTS



KEY PLAN N.T.S.

CLEAR FLOOR TO UNDERSLAB = 3050mm
 CLEAR PRODUCT = 2100mm
 COMPLETE DROP CEILING = 350mm
 UNITS 816/817/819/821/823/824: DRAINS FROM AMENITY TERRACE ON 9/F

NOTES:

- NORTH F/A SHAFT B FROM G/F TO 14/F. DUCT SERVING CORRIDOR FROM G/F TO 14/F. SEE PRESSURIZATION / VENTILATION RISER DIAGRAM FOR DETAILS.
- PIPE SHAFT - REFER TO PIPE RISER DETAIL ON THIS DRAWING FOR DETAILS.
- 150" KITCHEN / DRYER / W/R / FCU INTAKE / FCU EXHAUST DUCT. (TYPICAL UNLESS OTHERWISE NOTED)
- NORTH F/A SHAFT A FROM G/F TO 14/F. DUCT SERVING CORRIDOR FROM 3/F TO 14/F. SEE PRESSURIZATION / VENTILATION RISER DIAGRAM FOR DETAILS.
- 15" SWR
- 19" DHUR
- 25" DHUR
- 38" DHUR
- 50" DHUR
- 50" DCU & 38" DHU
- 63" DCU & 50" DHU
- 75" DCU & 63" DHU
- 25" DCU & 19" DHU
- 19" DCU & 19" DHU
- 600" GARBAGE CHUTE.
- 100" RUL FROM ABOVE AND DOWN.
- 100" RUL FROM ABOVE.
- 100" RUL DOWN.
- 100" STY 01%.
- 150" RUL FROM ABOVE AND DOWN.
- 32" IRRIGATION LINE TO SERVE GREEN ROOF.

NO.	DESCRIPTION	DATE
1	BASED FOR SITE INSPECTION #1-6	EP
2	BASED FOR SITE INSPECTION #1-6	EP
3	BASED FOR GFI CORRECT	EP
4	BASED FOR SITE INSPECTION #1-6	EP
5	BASED FOR SITE INSPECTION #1-6	EP
6	BASED FOR PERMIT	EP
7	BASED FOR PERMIT	EP
8	BASED FOR PERMIT	EP
9	BASED FOR PERMIT	EP
10	BASED FOR PERMIT	EP
11	BASED FOR PERMIT	EP
12	BASED FOR PERMIT	EP
13	BASED FOR PERMIT	EP
14	BASED FOR PERMIT	EP
15	BASED FOR PERMIT	EP
16	BASED FOR PERMIT	EP
17	BASED FOR PERMIT	EP
18	BASED FOR PERMIT	EP
19	BASED FOR PERMIT	EP
20	BASED FOR PERMIT	EP
21	BASED FOR PERMIT	EP
22	BASED FOR PERMIT	EP

NOVA ENGINEERING

175 West Beaver Creek Road Unit 31
 Richmond Hill, Ontario L4B 3M1
 Tel: 905-882-5445
 Fax: 905-882-5441

DRAWING TITLE: 2/F NORTH MECHANICAL LAYOUT

PROJECT TITLE: 50 ALEXANDRA PARK BLOCK II 38 CAMERON STREET TORONTO ONTARIO

DATE: FEB 13 2013

SCALE: 1:50

PROJECT NUMBER: 1313

DRAWING NUMBER: M-25

OF 45