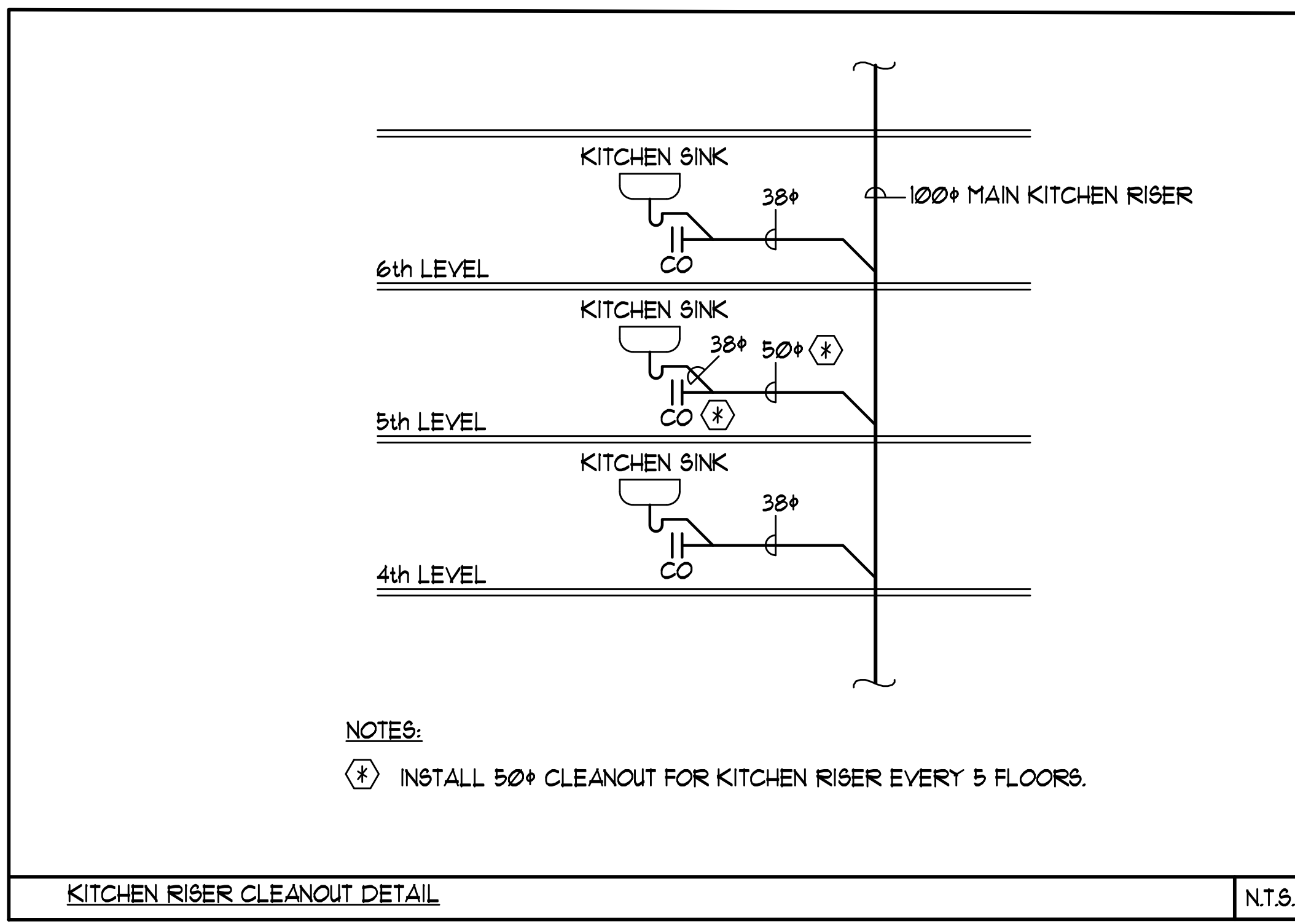


- GENERAL SANITARY RISER NOTES:**
- 1 ALL INSTALLATION SHALL BE ACCORDING TO LATEST EDITION OF THE PLUMBING CODE.
 - 2 PROVIDE YOKE VENT AT EVERY FIVE STOREYS OR AS REQUIRED BY CODE.
 - 3 PROVIDE MINIMUM 3000mm SEPARATION BETWEEN CONNECTION OF MAIN SANITARY AND AUXILIARY SANITARY RISERS TO THE SANITARY BRANCH AT THE BASE OR THE RISERS.

TYPICAL SANITARY RISER DIAGRAM N.T.S.

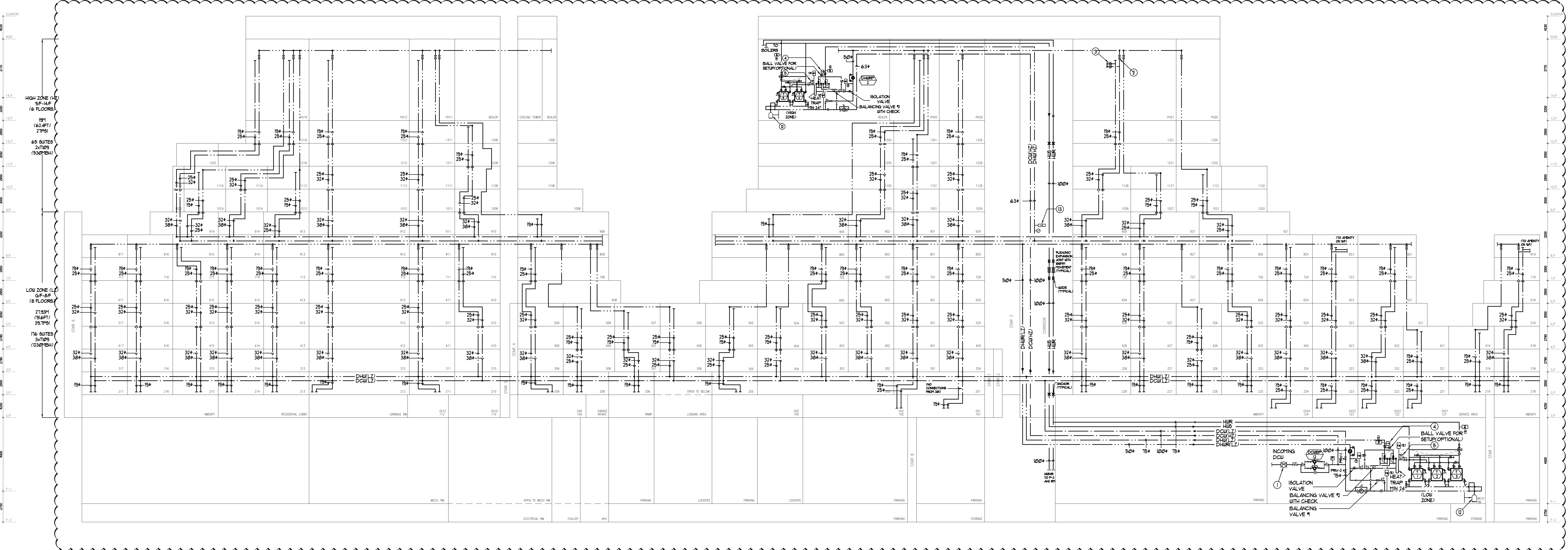


KITCHEN RISER CLEANOUT DETAIL N.T.S.

FRY SCHEDULE					
FRY #	DUTY	FLOW RATE (GPM)	INLET PRESSURE (PSI)	OUTLET PRESSURE (PSI)	REMARKS
1	LOW ZONE DCU	235	120	86	CLA-VAL MODEL 90G-Ø1/2" ASKC 15" OR EQUAL.
2	LOW ZONE DHU	70	120	102	CLA-VAL MODEL 90G-Ø1/2" ASKC 50" OR EQUAL.

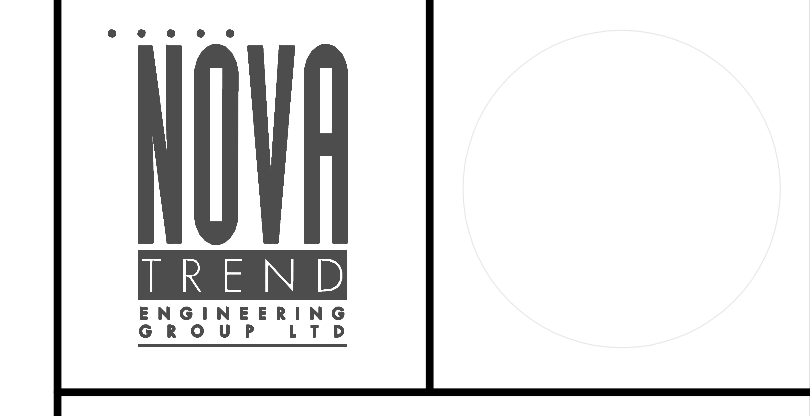
- GENERAL NOTES:**
- 1) SIZES SHOWN INDICATE REDUCTIONS AFTER DHW/CHU HEADERS ON STOREY INDICATED.
 - 2) REFER TO FLOOR PLANS FOR SIZING OF HORIZONTAL PIPE.
 - 3) PROVIDE 1/2" SHUT OFF VALVES FOR EACH SUITE.
 - 4) PROVIDE DRAIN VALVE AT BOTTOM OF EACH RISER.
 - 5) PROVIDE AIR VENT AT TOP OF EACH RISER.
 - 6) PROVIDE 1/2" CIRCUIT BALANCING VALVE ON TOP OF EACH DOMESTIC HOT WATER RISER EACH CIRCUIT VALVE TO BE BALANCED TO EQUAL FLOW.
 - 7) ALL RISER ANCHORS MUST INCLUDE 25MM THICK NSN ISOLATION PADS. THE PADS ARE TO BE HELD IN PLACE WITH HORIZONTAL STEEL PLATES WELDED TO BRACKETS THAT ARE IN TURN WELDED TO THE RISER.
 - 8) WHERE RISERS ARE SUPPORTED BY T-CLAMPS RATHER THAN ANCHORS, NSN PADS ARE TO BE INCLUDED BELOW THE T-CLAMP.
 - 9) ANY PIPE GUIDES USED IN CONNECTION WITH EXPANSION JOINTS OR LOOPS ARE TO BE THE PRE-FABRICATED TYPE WITH INTEGRAL RUBBER ISOLATION.

- NOTES:**
- 1 WATER METER ASSEMBLY c/w BACK WATER VALVE AND EXPANSION TANK PER CITY'S STANDARDS. SEE DETAILS ON DWG-M-21.
 - 2 1/2" CIRCUIT BALANCING VALVE AT TOP OF EACH DHU RISER UNLESS OTHERWISE SPECIFIED (TYPICAL)
 - 3 1/2" SHUT-OFF VALVE FOR EACH SUITE. (TYPICAL)
 - 4 SET AT 120°F DHW & COMBINED DCU & DHUR TO MAINTAIN MAXIMUM SUPPLY TEMPERATURE AT 120°F.
 - 5 BYPASS HUB ONCE DHW SUPPLY TEMPERATURE REACHES 140°F.
 - 6 NOTE DELETED.
 - 7 NOTE DELETED.
 - 8 NOTE DELETED.
 - 9 NOTE DELETED.
 - 10 THERMOMETER AND PRESSURE GAUGE.
 - 11 BAS TO ADJUST PRIMARY HEATING WATER TEMPERATURE AND/OR RAMP UP BOILER TEMPERATURE IF REQUIRED WHEN DOMESTIC HOT WATER SUPPLY TEMPERATURE DROPS BELOW 120°F. (TYPICAL TO ALL ZONES).
 - 12 ARMSTRONG PRECHARGED DIAPHRAGM EXP. TANK MODEL A5T-42.
 - 13 THERMOMETER AND PRESSURE GAUGE.



NO.	DATE	DESCRIPTION	BY
1		ISSUED FOR PERMIT	EP
2		ISSUED FOR PERMIT	EP
3		ISSUED FOR PERMIT	EP
4		ISSUED FOR PERMIT	EP
5		ISSUED FOR PERMIT	EP

REVISIONS
 CONTRACTOR MUST CHECK AND VERIFY ALL DIMENSIONS AND CONDITIONS ON THE JOB AND REPORT DISCREPANCIES TO THE ARCHITECT BEFORE PROCEEDING WITH THE WORK. THE DRAWING IS THE PROPERTY OF THE ENGINEER AND NOT BE RETURNED UPON COMPLETION OF THE WORK.
 DRAWINGS ARE NOT TO BE SCALED



175 West Beaver Creek Road Unit 31
 Richmond Hill, Ontario L4B 3M1
 Tel: 905.882-5445
 Fax: 905.882-5441

DRAWING TITLE:
 DCU, DHU & DHUR
 RISER DIAGRAM

PROJECT TITLE:
 50 ALEXANDRA PARK
 BLOCK II
 38 CAMERON STREET
 TORONTO

DATE	PROJECT NUMBER	SCALE
FEB, 13	1313	M-36 of 43