

UNIT	NAME	AREA (SQ. FT.)	* OF UR	* OF FOUJDER	SIZE (T)	FIXTURE UNITS	BR	SQ. FT./T
914	IC-D	530	2	0	1	16	1	530
919	2A-DTR	855	2	1	15	22	2	510
921	2A-DT	855	2	1	15	22	2	510
921	2KA	780	2	0	15	16	2	510

GRILLE SIZING TABLE			VERTICAL FAN COIL SIZE		
DESIGNATION	SIZE	L/S	DESIGNATION	MODEL	W x D
SG-A	300x100	41-10	FCU-IT	450	500x660
SG-B	300x150	71-93	FCU-15T	600	500x660
SG-C	400x150	94-140	FCU-2T	800	500x660
SG-D	450x150	141-188	FCU-25T	1000	550x660
EG-A	150x150	35	FCU-3T	1200	550x660
W-1	225x200	210mm(L)	NOTE: A MIN. OF 125mm IS REQUIRED ON THE SIDE OF PIPE RISER		
W-2	425x200	INSULATED			
W-3	625x200	WALL BOX			

DUCT SIZING TABLE (4.06 m/s, 200 FPM)				
DESIGNATION	L/S	DUCT SIZE	DESIGNATION	DUCT SIZE
(A)	41	100x150	(G)	109
(B)	71	150x150	(H)	236
(C)	94	200x150	(J)	283
(D)	118	200x150	(K)	330
(E)	141	250x150	(L)	371
(F)	165	300x150		

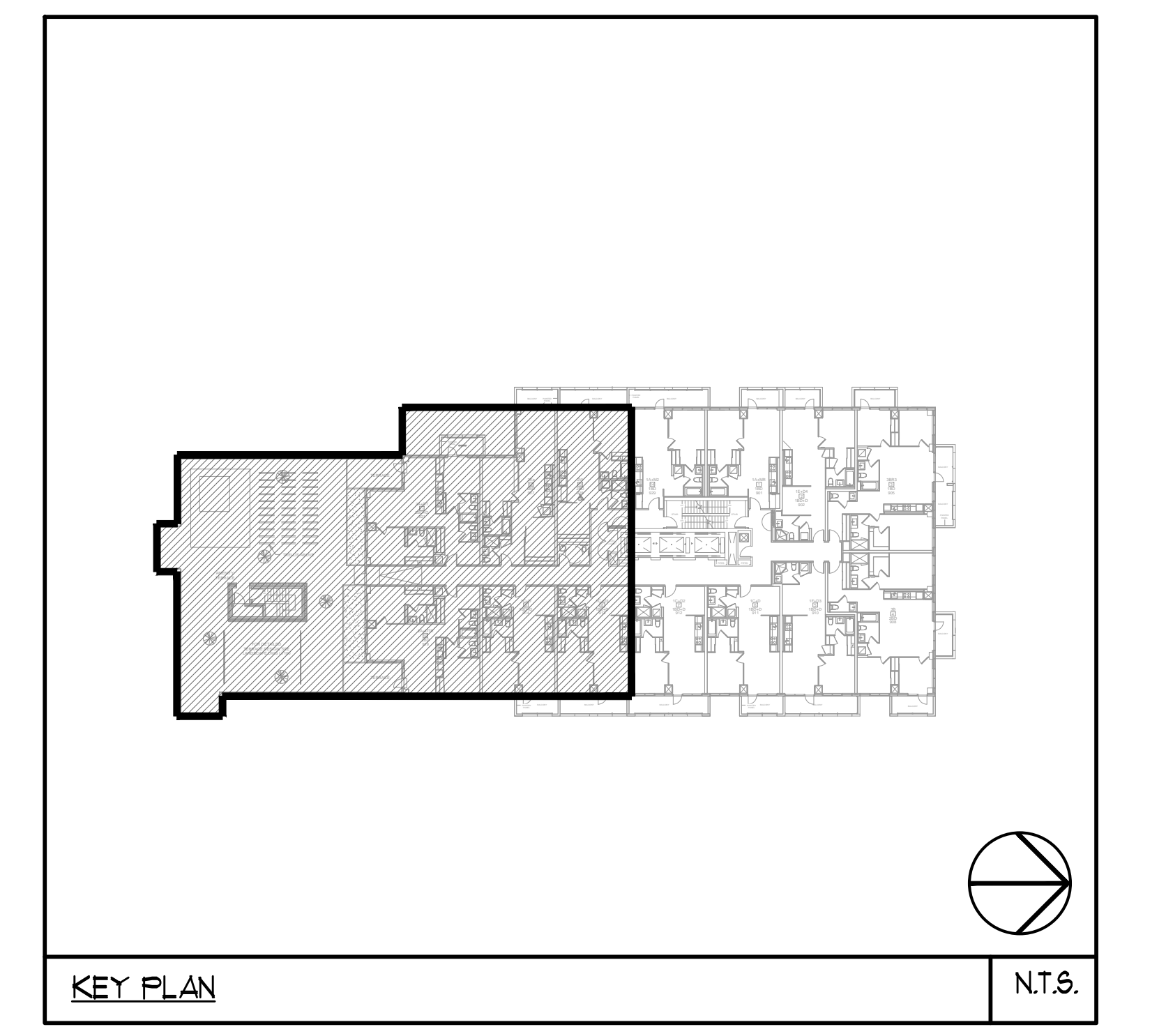
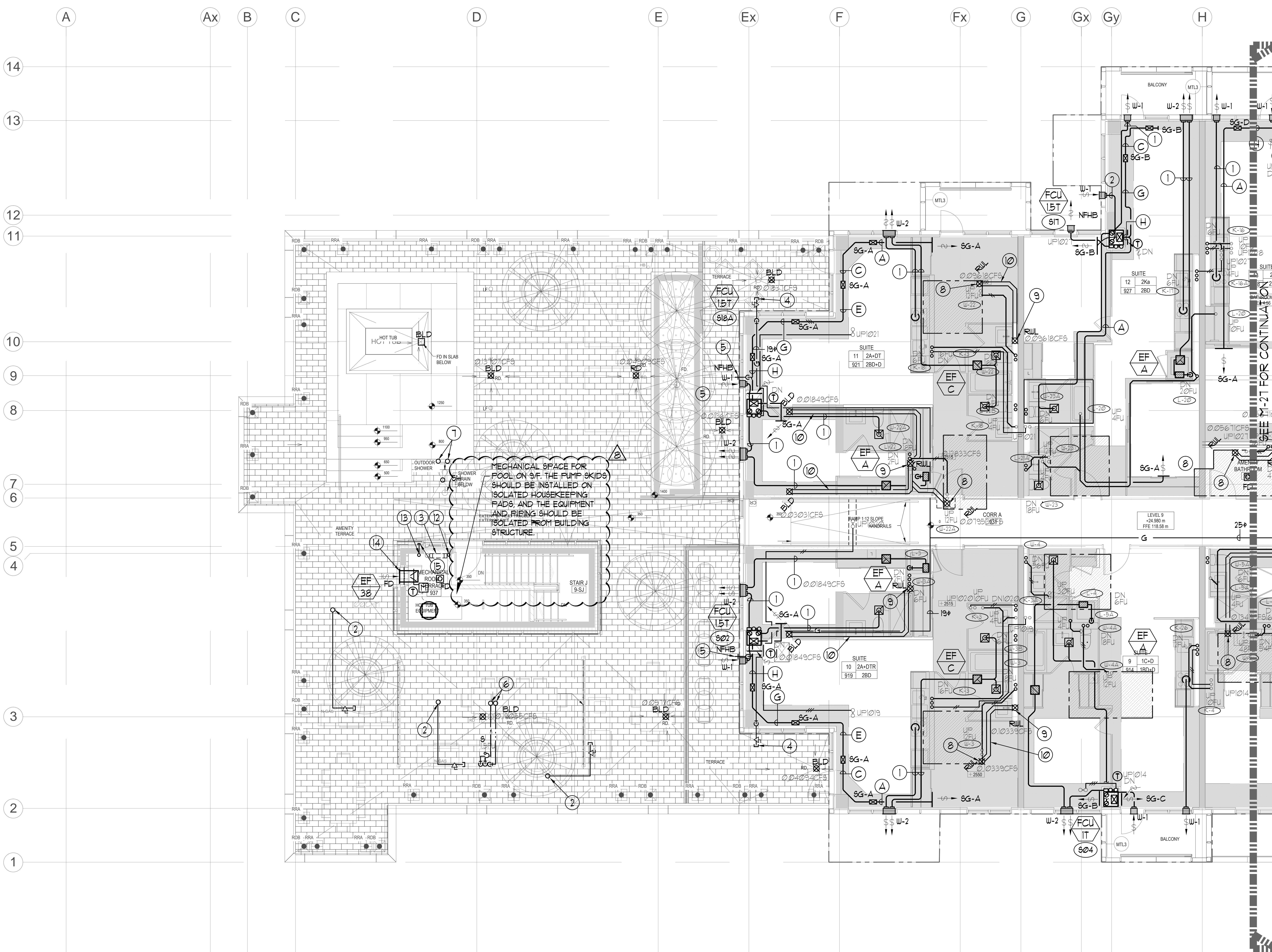
- GENERAL NOTES:
- CONTRACTOR SHALL CO-ORDINATE ARCHITECTURAL, STRUCTURAL, LIGHTING, HVAC, SPRINKLER DRAWINGS TO AVOID AREAS OF CONFLICT AND TO MAINTAIN CEILING HEIGHTS.
 - CONTRACTOR SHALL REPORT ALL DISCREPANCIES AND AREA OF CONFLICTS TO THE ENGINEER PRIOR TO WORK BEGINS.
 - PROVIDE EXPANSION CHAMBERS FOR ALL KITCHEN SINKS.
 - SEE INSTALLATION DETAILS DRAWING FOR WASHER, D.O.M, H.C WATER, SANITARY CONNECTION DETAILS.
 - SUPPLY AND INSTALL COMPLETE DOMESTIC HOT AND COLD WATER LINES, SANITARY AND VENT LINES TO EACH FIXTURE EQUIPMENT INCLUDING WATER CLOSETS, LAVATORIES, BATHS, SHOWERS, KITCHEN SINK, WASHING MACHINES, DISHWASHERS, AND FLOOR DRAINS, KITCHEN SINK, LAVATORIES, WATER CLOSETS AND WASHING MACHINE TO BE C/W LOCALIZED SHUT-OFF VALVES.
 - ALL VENT PIPE INSTALLATION TO COMPLY WITH PLUMBING CODES.
 - FOR D.H.C. W. RISER SIZES, REFER TO RISER DIAGRAM
 - FIRE DAMPERS ARE REQUIRED TO BE LISTED AND ARE TO HAVE FIRE PROTECTION RATING OF THE PENETRATED FIRE SEPARATION.
 - THE PIPING PENETRATING THE VARIOUS FIRE SEPARATION IS REQUIRED TO BE FIRESTOPPED WITH A LISTED FIRESTOPPING MATERIAL IN ACCORDANCE WITH OBC ARTICLE 3.13.1
 - THE FIRE HOSE CABINET THAT ARE RECESSED INTO THE EXIT STAIR SHAFTS ARE REQUIRED TO BE SEPARATED FROM THE EXIT STAIR BY A 2 HR FIRE SEPARATION.
 - NO FLEXIBLE DUCT SHALL BE USED FOR ANY IN-SUITE DUCTWORK.
 - PROVIDE 25MM EXTERNAL INSULATION TO ENTIRE FRESH AIR DUCT FROM EXTERIOR WALL TO ERV FAN COIL UNIT.
 - DRYER EXHAUST DUCT SHALL BE SMOOTH AND CORROSION-RESISTANT MATERIAL (FLEXIBLE CONNECTION IS NOT ACCEPTABLE).

LEGEND MECHANICAL

SYMBOL	DESCRIPTION
[Symbol]	APPLY AIR DRIVER
[Symbol]	APPLY AIR TRIPPER
[Symbol]	LINEAR SUPPLY DIFFUSER
[Symbol]	THROTTLE
[Symbol]	FAN MOTOR
[Symbol]	RETURN AIR GRILLE
[Symbol]	EXHAUST AIR GRILLE
[Symbol]	APPLY DUCT UP
[Symbol]	APPLY DUCT DOWN
[Symbol]	RETURN DUCT UP
[Symbol]	RETURN DUCT DOWN
[Symbol]	EXHAUST DUCT UP
[Symbol]	EXHAUST DUCT DOWN
[Symbol]	FIRE DAMPER
[Symbol]	BALANCING DAMPER
[Symbol]	MOTORIZED DAMPER
[Symbol]	MOTORIZED FIRE DAMPER
[Symbol]	BACKDRIFT DAMPER
[Symbol]	OPPOSED BLADE VOLUME CONTROL DAMPER
[Symbol]	TURNING VANES
[Symbol]	FLEXIBLE CONNECTION
[Symbol]	ACOUSTIC INSULATION
[Symbol]	TYPE OF EQUIPMENT
[Symbol]	SMALL SIZE OR OFFSHORE WOOD KEE
[Symbol]	ANNUAL (CH OR LA)
[Symbol]	SEWER (3 PHASE / PHASE)
[Symbol]	FAN SWITCH / FAN-SUITE OVERRIDE BUTTON
[Symbol]	CO SENSOR
[Symbol]	GAS LINE
[Symbol]	GAS METER
[Symbol]	GAS SOLE
[Symbol]	PRESSURE REDUCING VALVE
[Symbol]	SANITARY ABOVE GRADE
[Symbol]	SANITARY BELOW GRADE
[Symbol]	OTHER ABOVE GRADE
[Symbol]	OTHER BELOW GRADE
[Symbol]	DOMESTIC COLD WATER
[Symbol]	DOMESTIC HOT WATER
[Symbol]	DOMESTIC HOT WATER RECIRCULATION
[Symbol]	SANITARY VENT
[Symbol]	WATER METER
[Symbol]	FLOOR DRAIN
[Symbol]	RUNNEL FLOOR DRAIN
[Symbol]	ROOF DRAIN
[Symbol]	LAB DRAIN
[Symbol]	AREA DRAIN
[Symbol]	B1-LEVEL AREA DRAIN
[Symbol]	CATCH BASIN
[Symbol]	SANITARY TRAP
[Symbol]	ELBOW UP
[Symbol]	ELBOW DOWN
[Symbol]	WALL CLEANOUT
[Symbol]	FLOOR CLEANOUT
[Symbol]	HOSE BIBBS
[Symbol]	NON-PRESSURE HOSE BIBBS
[Symbol]	GATE VALVE
[Symbol]	BALL VALVE
[Symbol]	BUTTERFLY VALVE
[Symbol]	PRESSURE REDUCING VALVE
[Symbol]	CHECK VALVE
[Symbol]	CAP
[Symbol]	COMPRESSED AIR OUTLET
[Symbol]	MULTIPLE PIPES
[Symbol]	CIRCUIT BALANCING VALVE
[Symbol]	DENOTES NO. OF PIPES
[Symbol]	TEMPERATURE SENSOR
[Symbol]	TEMPERATURE
[Symbol]	3-WAY MODULATING VALVE
[Symbol]	3-WAY MODULATING VALVE
[Symbol]	3-WAY MODULATING VALVE
[Symbol]	1/4" VENT THERMOSTAT
[Symbol]	C/W 1/2" BUSHING & 1/2" PLUG
[Symbol]	FLOOR ELEVATION ABOVE LEVEL
[Symbol]	HEADROOM FLOOR TO CEILING

- ACOUSTIC NOTES:
- ALL SYSTEM/DOMESTIC PIPE LOOPS OR OFFSETS WHICH ARE 50MM DIA. AND LARGER SHALL BE ISOLATED USING NEOPRENE-IN-SHEAR HANGERS, AND ADDITIONAL 25 MM THICK RIBBED OR WAFFLED NEOPRENE PADS IN THE SADDLES OF CLEVIS HANGERS.
 - ALL PIPES SMALLER THAN 50MM DIA. SHALL BE ISOLATED WITH 5MM THICK RIBBED OR WAFFLED RUBBER PADS IN HANGER SADDLES.
- CLEAR FLOOR TO UNDERSLAB = 2550mm
 ALL UNITS CLEAR PRODUCT = 2800mm
 EXCEPT UNITS: 905/908 CLEAR PRODUCT = 2100mm
 UNITS 925/928/919/921: DRAINS FROM TERRACE ON 10/F

- NOTES:
- 150# KITCHEN / DRYER / W/R / FCU INTAKE / FCU EXHAUST DUCT. (TYPICAL UNLESS OTHERWISE NOTED)
 - 19# GAS PIPE C/W QUICK DISCONNECT.
 - 3KW FFH BY DIV.16.
 - 19# GAS PIPE C/W VALVE AND CAP FOR BBQ.
 - 19# DCW FOR NFHB TO BE CONNECTED TO SUITE'S MAIN DCW LINE.
 - 19# DCW + DHW FROM BELOW TO SERVE (1) SINK.
 - 19# DCW + DHW FROM BELOW TO SERVE (1) SHOWER.
 - 100# RUL FROM ABOVE.
 - 100# RUL DOWN.
 - 100# 5T1 @1%.
 - 150# RUL DOWN.
 - 25# DCW FROM BELOW TO SERVE POOL MECHANICAL ROOM.
 - 32# IRRIGATION PIPE FROM BELOW TO AND 25# UP TO SERVE GREEN ROOF ABOVE.
 - 400x200 INTAKE LOUVER C/W MOTORIZED DAMPER, FIRE DAMPER & WIRE MESH.
 - 25# CAPPED IRRIGATION PIPE.



NO.	DESCRIPTION	DATE
1	MADE FOR SITE INSPECTION #10	EP
2	MADE FOR SITE INSPECTION #10	EP
3	MADE FOR SITE INSPECTION #10	EP
4	MADE FOR SITE INSPECTION #10	EP
5	MADE FOR PERMIT	EP
6	MADE FOR PERMIT	EP
7	MADE FOR PERMIT	EP
8	MADE FOR PERMIT	EP

MARK: VOO ALL PRINTS DATED PREVIOUS TO FINAL DATE ABOVE

NOVA ENGINEERING

175 West Beaver Creek Road Unit 31
 Richmond Hill, Ontario L4B 3M1
 Tel: 905-882-5445
 Fax: 905-882-5441

DRAWING TITLE:
9/F SOUTH MECHANICAL LAYOUT

PROJECT TITLE:
9G ALEXANDRA PARK BLOCK II
 38 CAMERON STREET TORONTO ONTARIO

DESIGNED BY: G.S. CHECKED BY: E.P. SCALE: 1:50
 DATE: FEB 13 2013 PROJECT NUMBER: M-26 DRAWING NUMBER: 26 OF 43