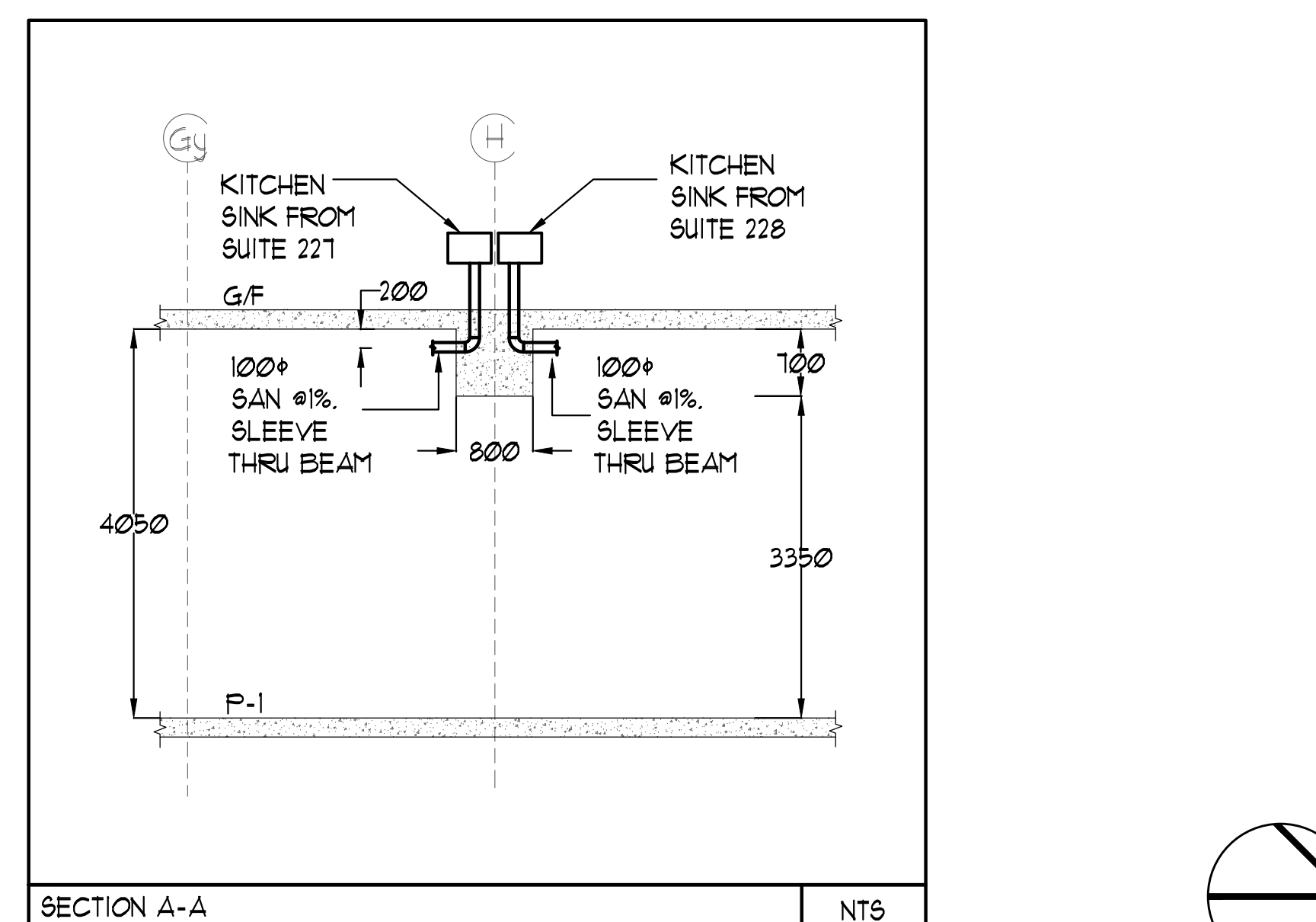


REFER TO DWG M-6 FOR GENERAL NOTES AND M-9 FOR ACOUSTIC NOTES

CLEAR FLOOR TO UNDERSLAB = 405mm  
 CLEAR FRODUCT = 3000mm  
 COMPLETE DROP CEILING = 1000mm FOR DUCT/PIPES  
 ROOF DRAINS & TERRACE DRAINS FROM 2/F

- NOTES:
- 1 100ø SAN @ 1%.
  - 2 150ø SAN @ 1%.
  - 3 100ø SAN DOWN.
  - 4 150ø SAN DOWN.
  - 5 100ø DCW (LZ) & 100ø DCW (HZ) FROM BELOW.
  - 6 15ø DHW (LZ) FROM BELOW & 50ø DHW (LZ) DOWN.
  - 7 50ø DCW (LZ), 38ø DHW (LZ) & 100ø DCW (HZ).
  - 8 38ø DCW (LZ) & 100ø DCW (HZ).
  - 9 32ø DHW (LZ) & 50ø DHUR.
  - 10 100ø DCW (LZ) & 15ø DHW (LZ).
  - 11 50ø DHUR.
  - 12 PIPES INSIDE 2HR FIRE RATED ENCLOSURE. ENCLOSURE BY OTHERS.
  - 13 19ø DCW & 19ø DHW DOWN TO SERVE (1) LAVATORY.
  - 14 32ø DCW & 25ø DHW.
  - 15 38ø DCW & 32ø DHW.
  - 16 25ø CONDENSATE PIPE CONNECT INDIRECTLY TO THE NEAREST WASTE.
  - 17 50ø CONDENSATE PIPE CONNECT INDIRECTLY TO THE NEAREST WASTE.
  - 18 25ø DCW DOWN TO SERVE (1) WATER CLOSET.
  - 19 19ø DCW & 19ø DHW DOWN TO SERVE (1) SHOWER.
  - 20 50ø CONDENSATE PIPE DOWN.
  - 21 DCW MANIFOLD A, SEE DCW MANIFOLD A DETAIL ON THIS DRAWING.
  - 22 DHW MANIFOLD A, SEE DHW MANIFOLD B DETAIL ON THIS DRAWING.
  - 23 19ø DCW & 19ø DHW DOWN TO SERVE (1) KITCHEN SINK.
  - 24 19ø CONDENSATE PIPE DOWN.
  - 25 100ø RWL FROM ABOVE.
  - 26 100ø RWL DOWN.
  - 27 100ø 5TM @ 1%.
  - 28 150ø RWL FROM ABOVE.
  - 29 150ø 5TM @ 1%.
  - 30 150ø RWL DOWN.
  - 31 5TM PIPE TO BE HEAT TRACE BY DIV.6 AND INSULATE & JACKET BY DIV.5.
  - 32 200ø 5TM @ 1%.
  - 33 250ø RWL DOWN.
  - 34 250ø 5TM @ 1%.
  - 35 SLEEVE THRU BEAM (TYPICAL).
  - 36 19ø DCW & 19ø DHW DOWN TO SERVE (1) JANITOR SINK.
  - 37 WHIRLPOOL DRAIN. EXACT LOCATION TO BE CONFIRMED BY WHIRLPOOL CONSULTANT.
  - 38 VERIFY HEIGHT /W.I.D. & ARCH IF SLEEVING IS REQ'D.
  - 39 19ø DCW DOWN TO SERVE WATER FOUNTAIN.
  - 40 100ø DCW (LZ) & 15ø DHW (LZ) UP.
  - 41 19ø DCW G/W SHUT-OFF FOR STEAM GENERATOR.
  - 42 STEAM GENERATOR TO BE "STEAM SAUNA - STEAM MASTER" 9.9 kW MODEL.
  - 43 19ø DHUR.

LEGEND MECHANICAL	
SYMBOL	DESCRIPTION
[Symbol]	SUPPLY AIR DISBURSER
[Symbol]	SUPPLY AIR TRIPPER
[Symbol]	LINEAR SUPPLY DISBURSER
[Symbol]	FAN SWITCH
[Symbol]	RETURN AIR GRILLE
[Symbol]	EXHAUST AIR GRILLE
[Symbol]	SUPPLY DUCT UP
[Symbol]	RETURN DUCT UP
[Symbol]	EXHAUST DUCT UP
[Symbol]	SUPPLY DUCT DOWN
[Symbol]	RETURN DUCT DOWN
[Symbol]	EXHAUST DUCT DOWN
[Symbol]	FIRE DAMPER
[Symbol]	BALANCING DAMPER
[Symbol]	MOTORIZED DAMPER
[Symbol]	MOTORIZED FIRE DAMPER
[Symbol]	BACKDRIFT DAMPER
[Symbol]	OPPOSED BLADE VOLUME CONTROL DAMPER
[Symbol]	COIL LOCKING ASSEMBLY
[Symbol]	TUNING VANES
[Symbol]	FLEXIBLE CONNECTION
[Symbol]	ACOUSTIC INSULATION
[Symbol]	TYPE OF EQUIPMENT
[Symbol]	EQUIPMENT IDENTIFICATION
[Symbol]	TYPE OF CHIMNEY OR GRILLE
[Symbol]	SMALL SIZE OR OFFERER BEAK SIZE
[Symbol]	ANULOU (CH OR LZ)
[Symbol]	STARTER / 3 PHASE / 1 PHASE /
[Symbol]	IN-SITE ENVIRONMENT RATIO
[Symbol]	FAN SWITCH / IN-SITE ENVIRONMENT RATIO
[Symbol]	CO SENSOR
[Symbol]	GAS LINE
[Symbol]	GAS METER
[Symbol]	GAS STOP
[Symbol]	PRESSURE REDUCING VALVE
[Symbol]	BANITARY ABOVE GRADE
[Symbol]	BANITARY BELOW GRADE
[Symbol]	ATOMI ABOVE GRADE
[Symbol]	ATOMI BELOW GRADE
[Symbol]	DOPRESTIC COLD WATER
[Symbol]	DOPRESTIC HOT WATER
[Symbol]	DOPRESTIC HOT WATER RECIRCULATION
[Symbol]	BANITARY VENT
[Symbol]	WATER PIPES
[Symbol]	FLOOR DRAIN
[Symbol]	RUNNEL FLOOR DRAIN
[Symbol]	WASH DRAIN
[Symbol]	ROOF DRAIN
[Symbol]	BLAD DRAIN
[Symbol]	AREA DRAIN
[Symbol]	BI-LEVEL AREA DRAIN
[Symbol]	CATCH BASIN
[Symbol]	BANITARY TRAP
[Symbol]	ELBOW UP
[Symbol]	ELBOW DOWN
[Symbol]	WALL CLEANOUT
[Symbol]	FLOOR CLEANOUT
[Symbol]	HOSE BIBB
[Symbol]	NON-FREEZE HOSE BIBB
[Symbol]	GATE VALVE
[Symbol]	BALL VALVE
[Symbol]	BUTTERFLY VALVE
[Symbol]	PRESSURE REDUCING VALVE
[Symbol]	CHIEF VALVE
[Symbol]	CAP
[Symbol]	COMPRESSED AIR OUTLET
[Symbol]	BACKFLOW PREVENTER
[Symbol]	CIRCUIT BALANCING VALVE
[Symbol]	MULTIPLE PIPES
[Symbol]	DENOTES NO. OF PIPES
[Symbol]	TEMPERATURE SENSOR
[Symbol]	THERMISTOR
[Symbol]	3-WAY MODULATING VALVE
[Symbol]	3-WAY MODULATING VALVE
[Symbol]	17-WAYED THERMISTOR
[Symbol]	CO 1/2" BUSHING & 1/2" PLUGS
[Symbol]	FLOOR ELEVATION ABOVE LEVEL
[Symbol]	HEADROOM FLOOR TO US LEVEL



NO.	DESCRIPTION	DATE
1	BASED FOR SITE INSPECTION #15	EP
2	BASED FOR SITE INSPECTION #15	EP
3	BASED FOR SITE INSPECTION #15	EP
4	BASED FOR SITE INSPECTION #15	EP
5	BASED FOR SITE INSPECTION #15	EP
6	BASED FOR SITE INSPECTION #15	EP
7	BASED FOR SITE INSPECTION #15	EP
8	BASED FOR SITE INSPECTION #15	EP
9	BASED FOR SITE INSPECTION #15	EP
10	BASED FOR SITE INSPECTION #15	EP
11	BASED FOR SITE INSPECTION #15	EP
12	BASED FOR SITE INSPECTION #15	EP
13	BASED FOR SITE INSPECTION #15	EP
14	BASED FOR SITE INSPECTION #15	EP
15	BASED FOR SITE INSPECTION #15	EP
16	BASED FOR SITE INSPECTION #15	EP
17	BASED FOR SITE INSPECTION #15	EP
18	BASED FOR SITE INSPECTION #15	EP
19	BASED FOR SITE INSPECTION #15	EP
20	BASED FOR SITE INSPECTION #15	EP
21	BASED FOR SITE INSPECTION #15	EP
22	BASED FOR SITE INSPECTION #15	EP
23	BASED FOR SITE INSPECTION #15	EP
24	BASED FOR SITE INSPECTION #15	EP
25	BASED FOR SITE INSPECTION #15	EP
26	BASED FOR SITE INSPECTION #15	EP
27	BASED FOR SITE INSPECTION #15	EP
28	BASED FOR SITE INSPECTION #15	EP
29	BASED FOR SITE INSPECTION #15	EP
30	BASED FOR SITE INSPECTION #15	EP
31	BASED FOR SITE INSPECTION #15	EP
32	BASED FOR SITE INSPECTION #15	EP
33	BASED FOR SITE INSPECTION #15	EP
34	BASED FOR SITE INSPECTION #15	EP
35	BASED FOR SITE INSPECTION #15	EP
36	BASED FOR SITE INSPECTION #15	EP
37	BASED FOR SITE INSPECTION #15	EP
38	BASED FOR SITE INSPECTION #15	EP
39	BASED FOR SITE INSPECTION #15	EP
40	BASED FOR SITE INSPECTION #15	EP
41	BASED FOR SITE INSPECTION #15	EP
42	BASED FOR SITE INSPECTION #15	EP
43	BASED FOR SITE INSPECTION #15	EP

NOVA ENGINEERING

175 West Beaver Creek Road Unit 31  
 Richmond Hill, Ontario L4B 3M1  
 Tel: 905.882-5445  
 Fax: 905.882-5441

DRAWN BY: G.S. SOUTH  
 PROJECT TITLE: GQ ALEXANDRA PARK BLOCK II  
 38 CAMERON STREET TORONTO ONTARIO

DATE: FEB 13 2013  
 PROJECT NUMBER: 1313  
 DRAWING NUMBER: M-10 OF 43