

ELEV. No. 1

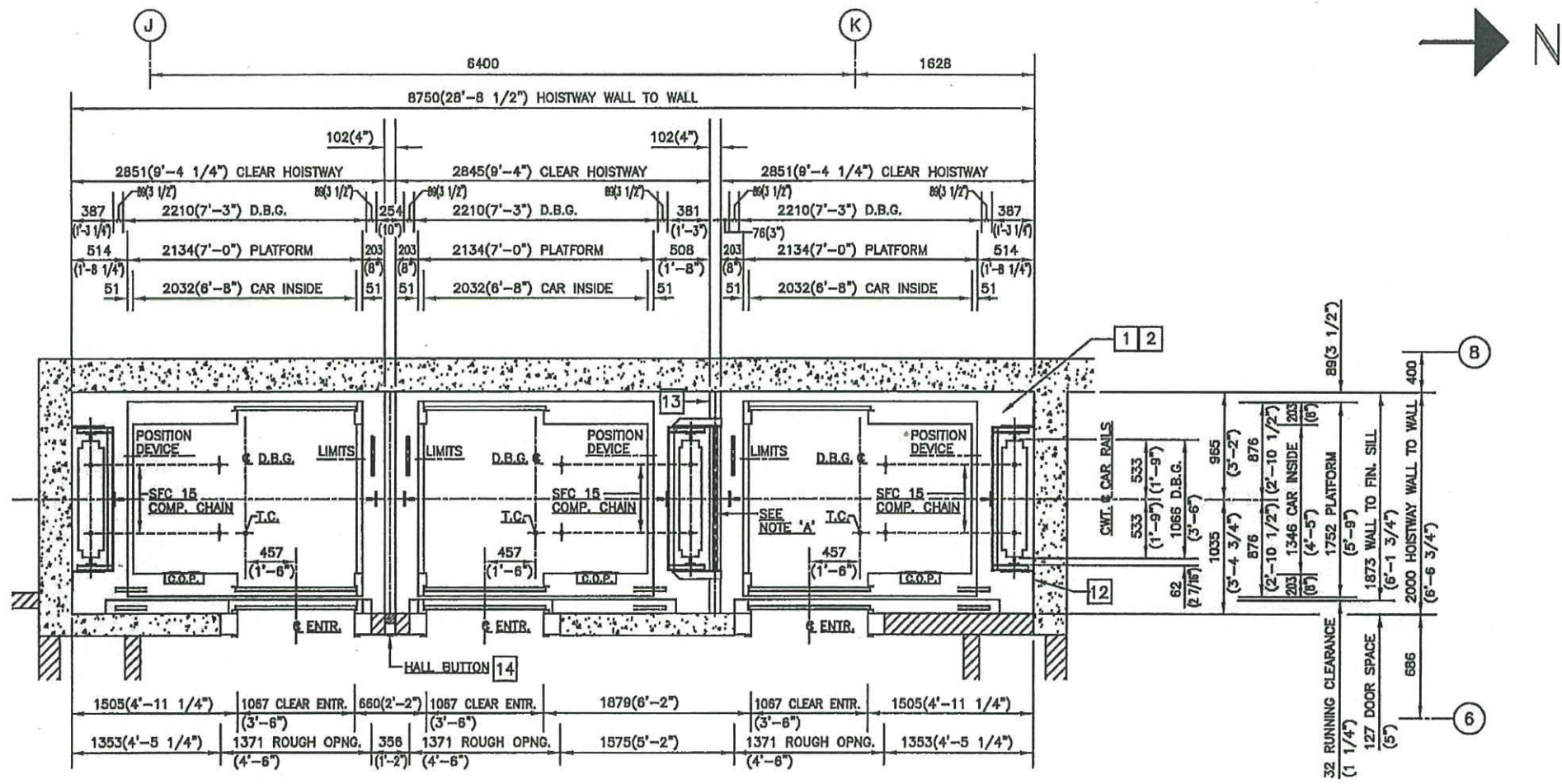
ELEV. No. 2

ELEV. No. 3
FIRE FIGHTER'S &
MOVING ELEVATOR

HOISTWAY PLAN
'1st' FLOOR

SQ ALEXANDRIA PARK
BLOCK 11
TORONTO, ONTARIO
ELEVATORS No. 1 to 3
HOISTWAY PLAN at
'1st' FLOOR

No. 1		REVISION	BY	DATE
BLDG. NAME		SQ ALEX PARK		
ADDRESS		TORONTO, ONT.		
THREE (3) GEARED PASSENGER ELEVATORS				
SELCO ELEVATORS LTD.				
DRWG. No.	SQ ALEX PARK	REV. 'B'	SHEET 3 of 8	
'B' GOVERNOR IDLER SHEAVE, LIMITS & T.C. RELOCATED.		W.T.	03/08/16	
'A' DIMENSIONS TO COLUMNS LINES REVISED. LAYOUT APPROVED AND MADE FINAL.		W.T.	12/27/14	



ELEV. No. 1

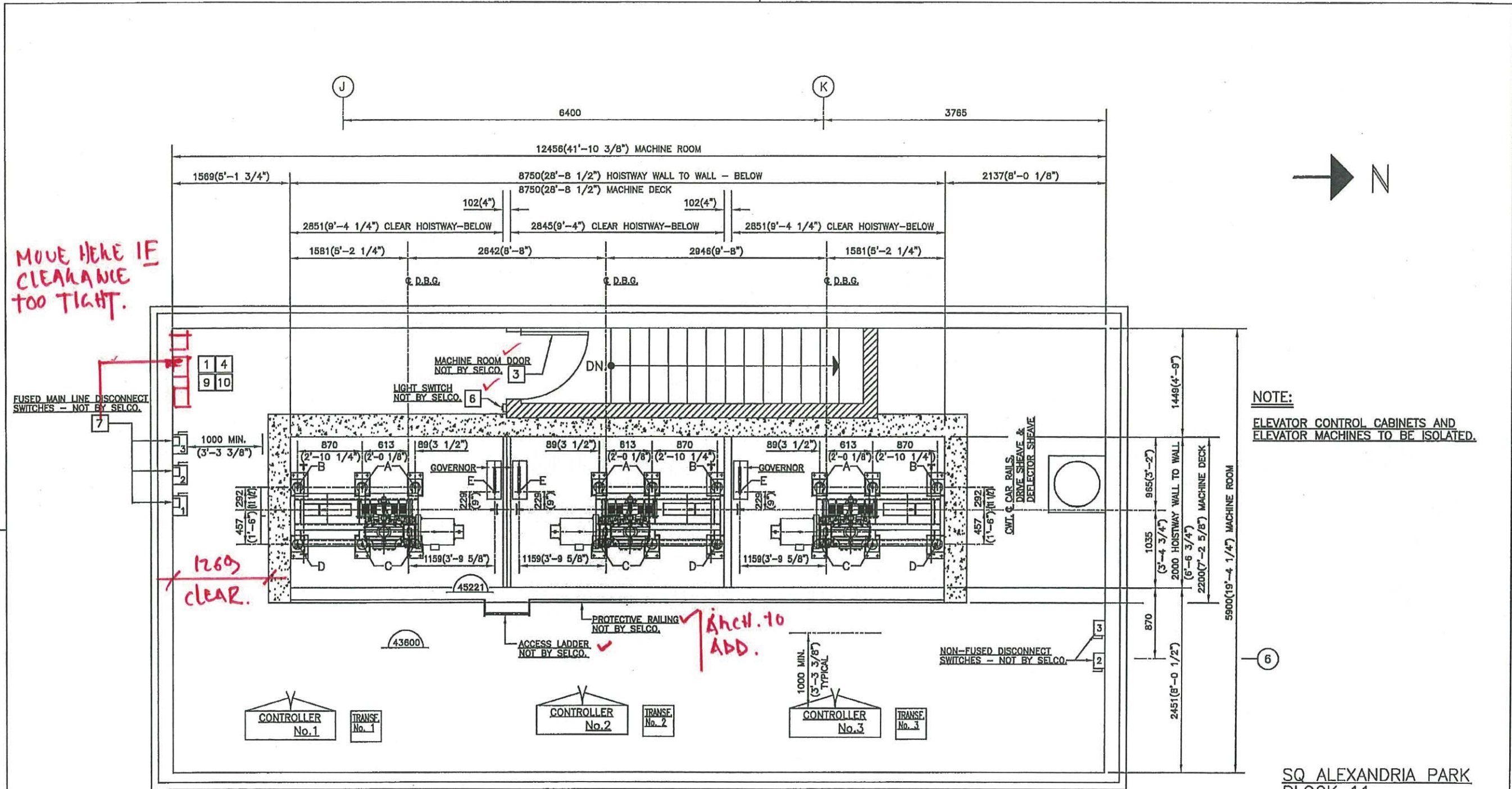
ELEV. No. 2

ELEV. No. 3
FIRE FIGHTER'S &
MOVING ELEVATOR

HOISTWAY PLAN
'2nd' to '14th' FLOORS

SQ ALEXANDRIA PARK
BLOCK 11
TORONTO, ONTARIO
ELEVATORS No. 1 to 3
HOISTWAY PLAN at
'2nd' to '14th' FLOORS

'B' GOVERNOR IDLER SHEAVE, LIMITS & T.C. RELOCATED.		W.T.	03/08/15
DIMENSION CENTRELINE CAR RAILS TO REAR WALL REVISED.		W.T.	12/27/14
'A' DIMENSIONS TO COLUMN LINES REVISED, LAYOUT APPROVED AND MADE FINAL.		W.T.	12/27/14
No.	REVISION	BY	DATE
BLDG. NAME	SQ ALEX PARK		
ADDRESS	TORONTO, ONT.		
THREE (3) GEARED PASSENGER ELEVATORS			
SELCO ELEVATORS LTD.			
DRWG. No.	SQ ALEX PARK	REV. 'B'	SHEET 4 of 8



NOTE:
ELEVATOR CONTROL CABINETS AND
ELEVATOR MACHINES TO BE ISOLATED.

ELEV. No. 1

ELEV. No. 2

ELEV. No. 3
FIRE FIGHTER'S &
MOVING ELEVATOR

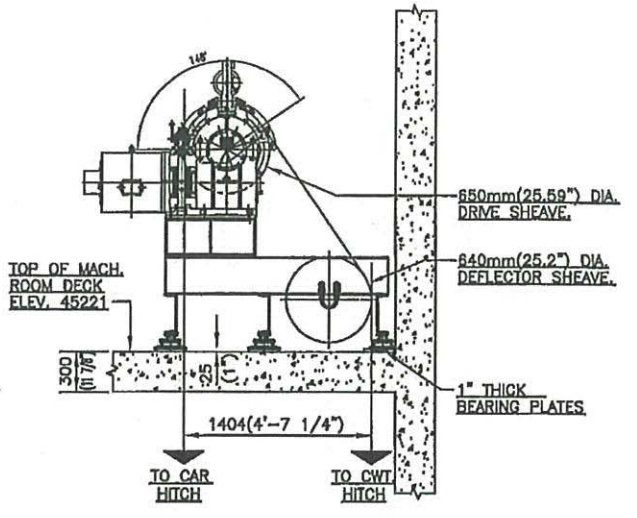
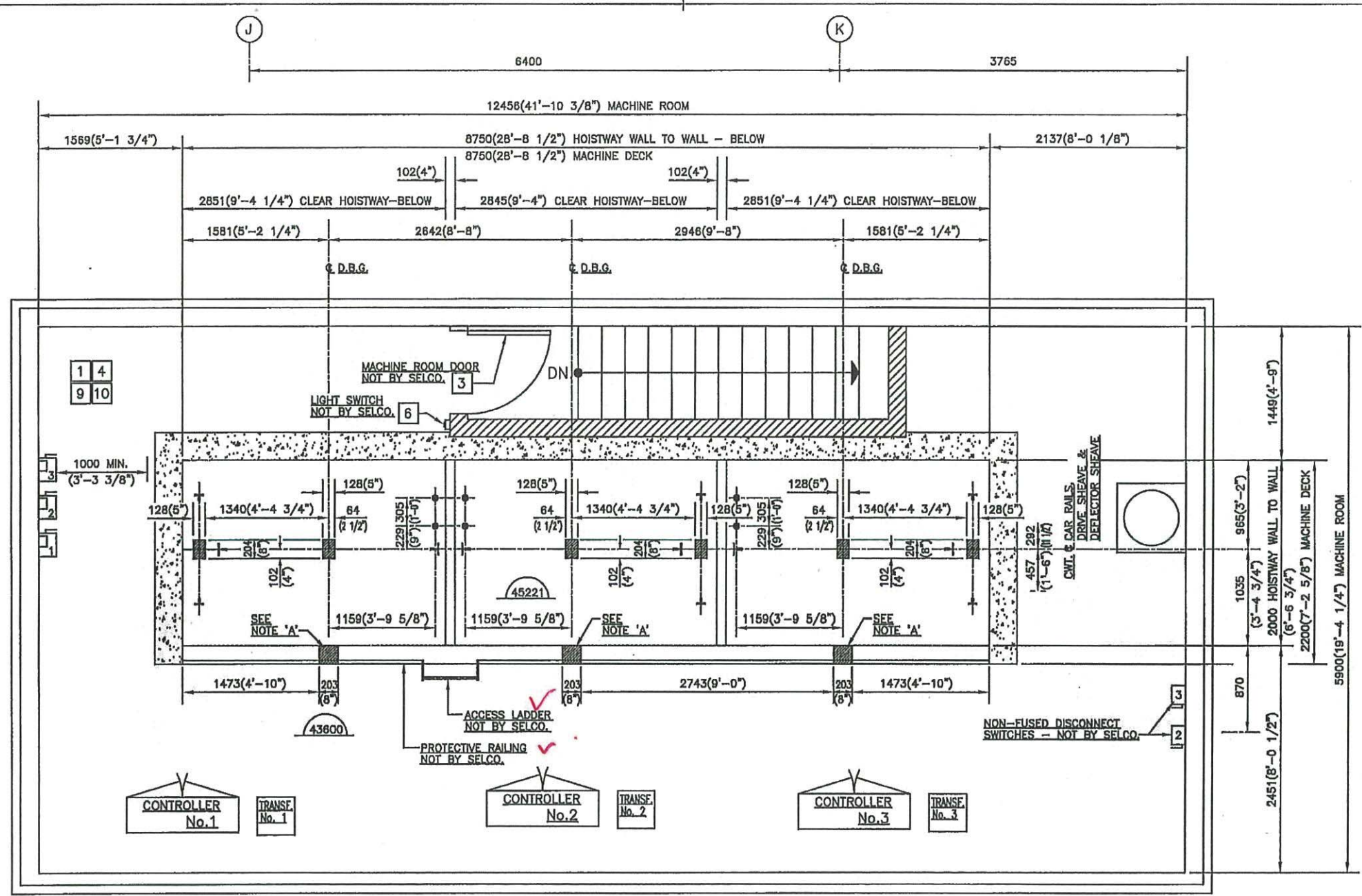
SQ ALEXANDRIA PARK
BLOCK 11
TORONTO, ONTARIO
ELEVATORS No. 1 to 3
MACHINE ROOM PLAN

REACTIONS (INCLUDING IMPACT)	
A	36.5kN (8200lbs.)
B	26.5kN (6000lbs.)
C	26.5kN (6000lbs.)
D	22.0kN (5000lbs.)
E	7.0kN (1500lbs.)

STRUCTURAL
TO REVIEW.

MACHINE ROOM PLAN

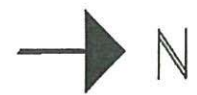
'B'	MACHINE TYPE CHANGED. REACTION LOADS 'A' TO 'D' REVISED. GOVERNORS ADDED.	W.T.	03/06/15
'A'	MACHINE ROOM SIZE REVISED. MACHINES NOW ON MACHINE DECK. PROTECTIVE RAILING & ACCESS LADDER ADDED. REACTION LOADS RELOCATED. GOVERNORS DELETED FROM MACHINE ROOM. FUSED MAIN LINE DISCONNECT SW'S. RELOCATED. LAYOUT APPROVED AND MADE FINAL.	W.T.	12/27/14
No.	REVISION	BY	DATE
BLDG. NAME		SQ ALEXANDRIA PARK-BLOCK 11	
ADDRESS		TORONTO, ONT.	
THREE (3) GEARED PASSENGER ELEVATORS			
SELCO ELEVATORS LTD.			
DRWG. No.	SQ ALEX PARK	REV. 'B'	SHEET 5 of 8



MACHINE MOUNTING DETAIL

ELEV. No. 1
 ELEV. No. 2
 ELEV. No. 3
 FIRE FIGHTER'S & MOVING ELEVATOR

MACHINE ROOM PLAN
HOLES IN FLOOR SLAB

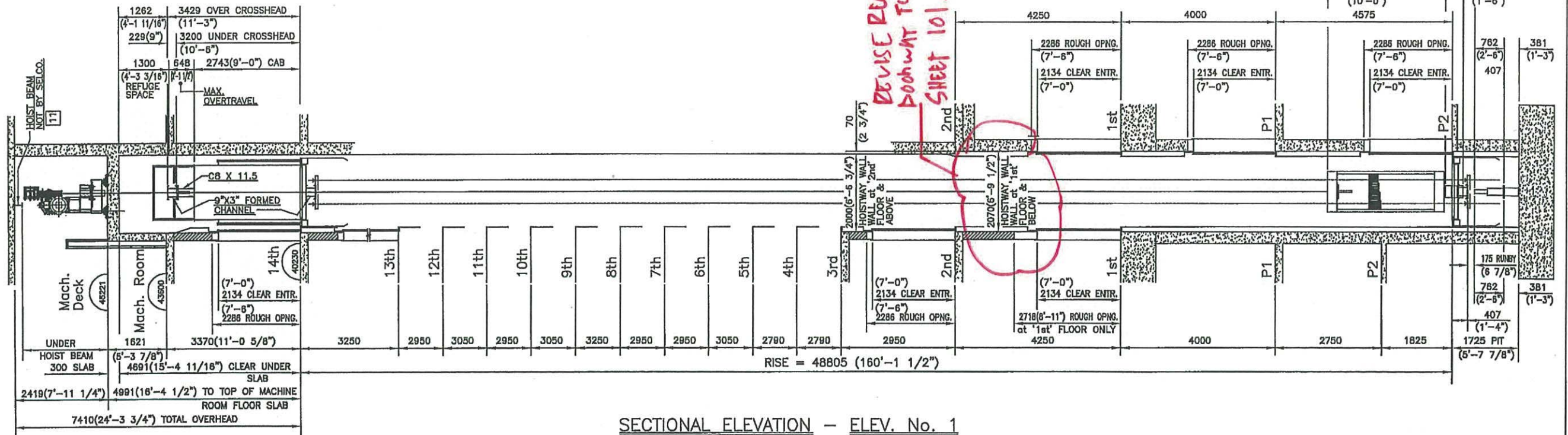


NOTE 'A':
 203mm X 203mm (8" X 8")
 WIRING HOLE IN FRONT WALL
 DIRECTLY BELOW MACHINE
 DECK FLOOR SLAB.

NOTE 'B':
 SHADED AREAS ARE HOLES IN
 MACHINE DECK FLOOR SLAB
 ALL ROUND HOLES ARE 64mm(2 1/2")
 DIA. - NOT BY SELCO.

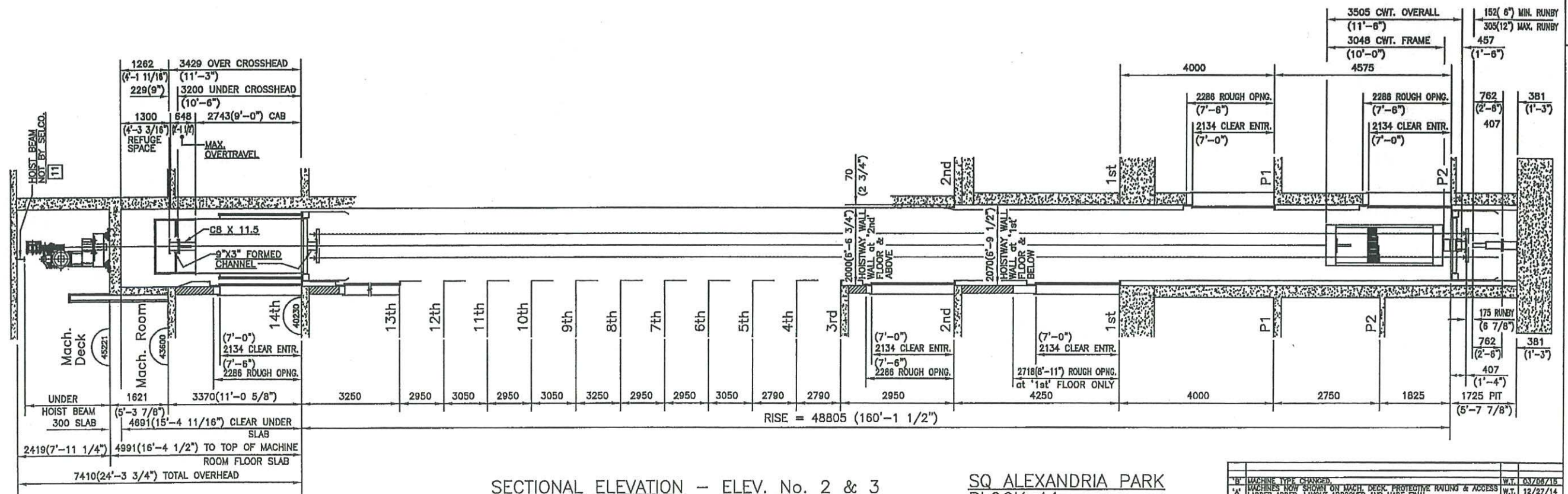
SQ ALEXANDRIA PARK
 BLOCK 11
 TORONTO, ONTARIO
 ELEVATORS No. 1 to 3
 MACHINE ROOM PLAN
 HOLES IN FLOOR SLAB
 MACHINE DETAIL

'B'	GOVERNOR ROPE HOLES ADDED. MACHINE MOUNTING DETAIL REVISED.	W.T.	02/08/15
'A'	MACHINE ROOM SIZE REVISED. MACHINE DECK ADDED. PROTECTIVE RAILING AND ACCESS LADDER ADDED. GOVERNORS NOW BELOW MACH. DECK FLOOR SLAB. WIRING HOLES ADDED IN FRONT HOISTWAY WALL. NOTE 'A' ADDED. LAYOUT APPROVED AND MADE FINAL.	W.T.	12/27/14
No.	REVISION	BY	DATE
BLDG. NAME		SQ ALEXANDRIA PARK-BLOCK 11	
ADDRESS		TORONTO, ONT.	
THREE (3) GEARED PASSENGER ELEVATORS			
SELCO ELEVATORS LTD.			
DRWG. No.	SQ ALEX PARK	REV. 'B'	SHEET 6 of 8



SECTIONAL ELEVATION - ELEV. No. 1

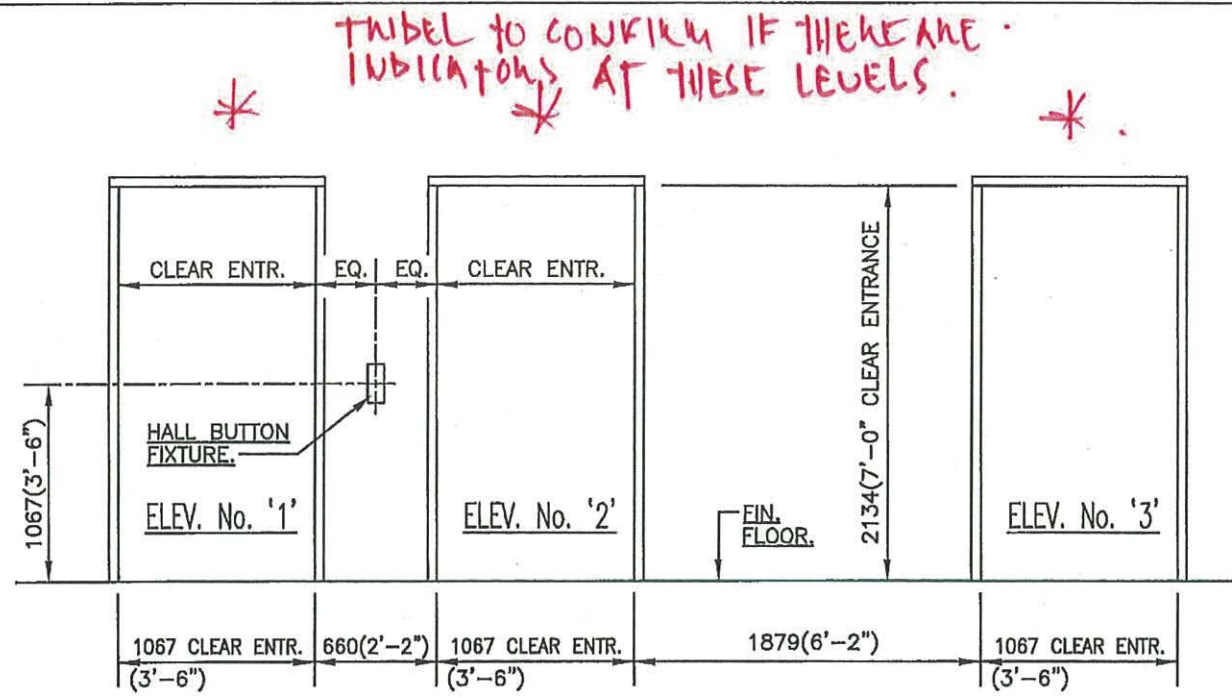
DEVISE REAR DOORWAY TO SUIT ON SHEET 101.



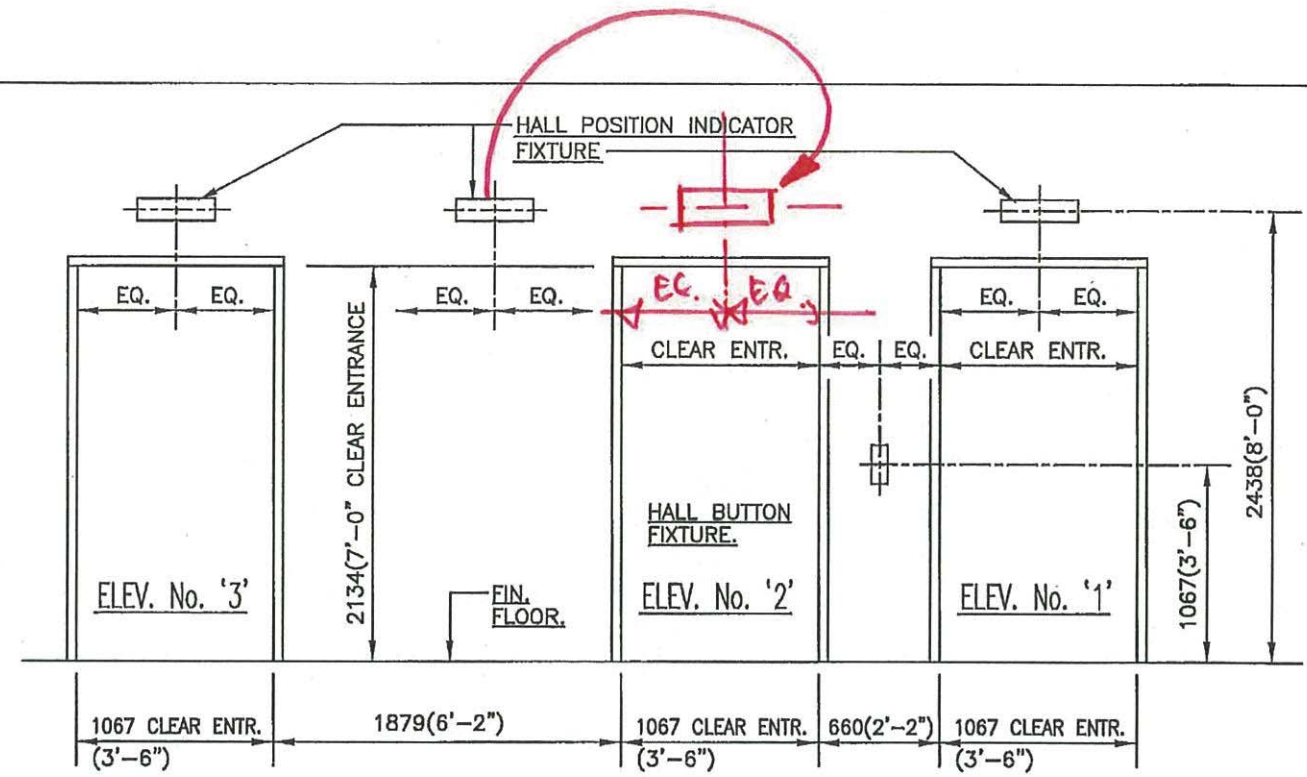
SECTIONAL ELEVATION - ELEV. No. 2 & 3

SQ ALEXANDRIA PARK
 BLOCK 11
 TORONTO, ONTARIO
 ELEVATORS No. 1 to 3
 SECTIONAL ELEVATIONS

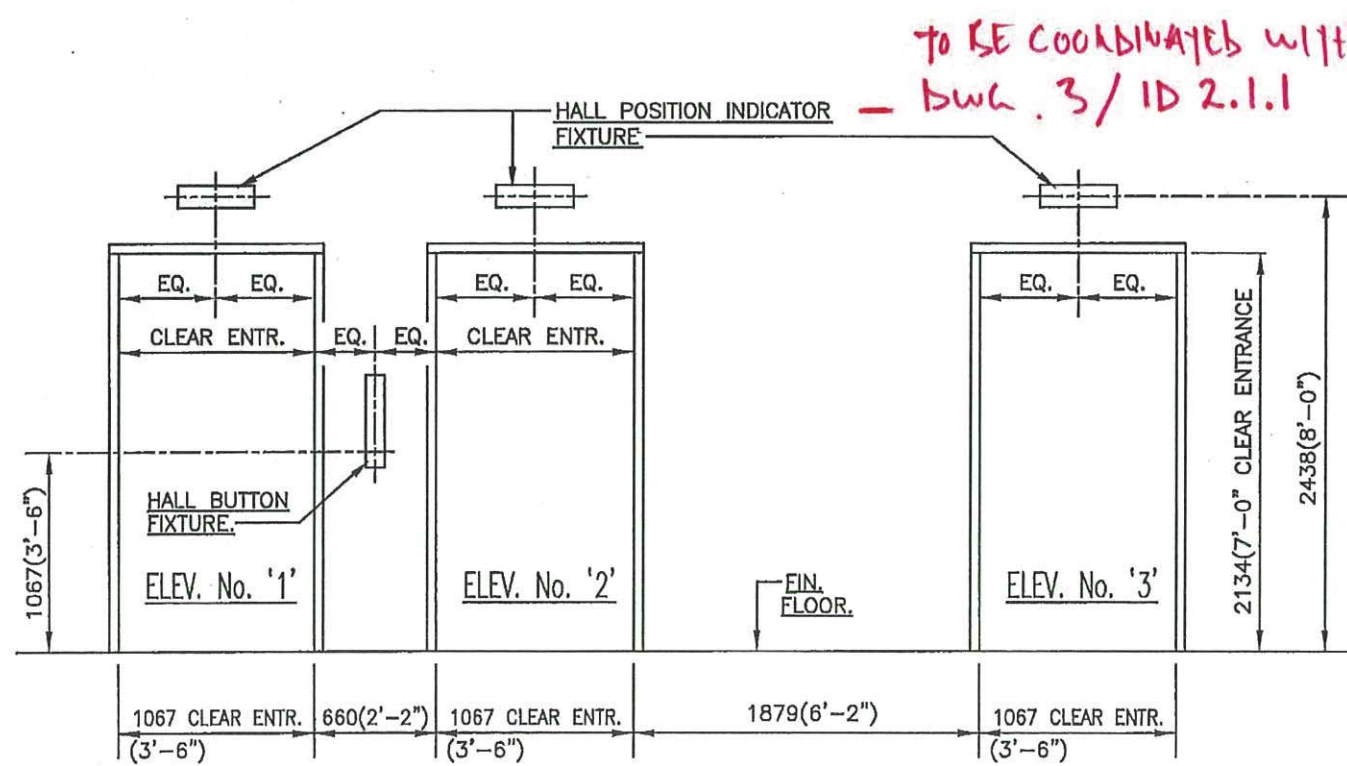
10	MACHINE TYPE CHANGED.	W.T.	03/08/15
11	MACHINES NOW SHOWN ON MACH. DECK. PROTECTIVE RAILING & ACCESS LADDER ADDED. LAYOUT APPROVED AND MADE FINAL.	W.T.	12/27/14
No.	REVISION	BY	DATE
BLDG. NAME		SQ ALEXANDRIA PARK	
ADDRESS		TORONTO, ONT	
THREE (3) GEARED PASSENGER ELEVATORS		SELCO ELEVATORS LTD.	
DRWG. No.	ALEX PARK	REV. B	SHEET 7 of 8



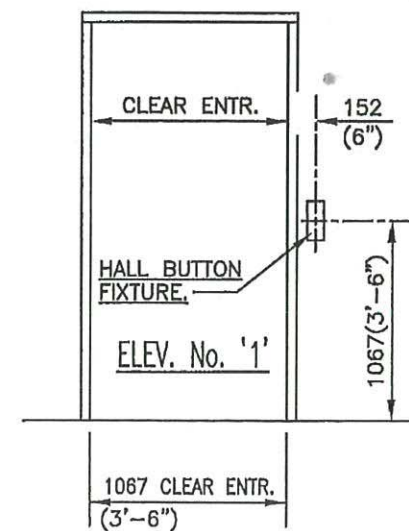
HALL FIXTURE DETAIL at '2nd' to '14th' FLOORS



HALL FIXTURE DETAIL at 'P1' & 'P2' FLOORS



HALL FIXTURE DETAIL at '1st' FLOOR



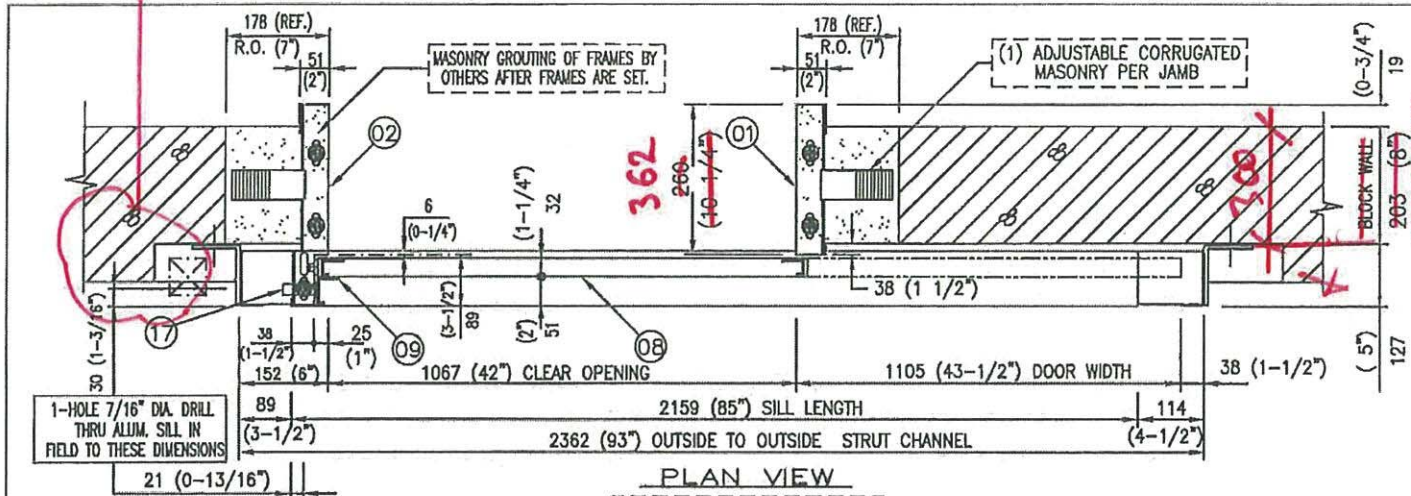
HALL FIXTURE DETAIL REAR ENTRANCE at '1st'

SQ ALEXANDRIA PARK
 BLOCK 11
 TORONTO, ONTARIO
 ELEVATORS No. 1 to 3
 HALL FIXTURE DETAILS

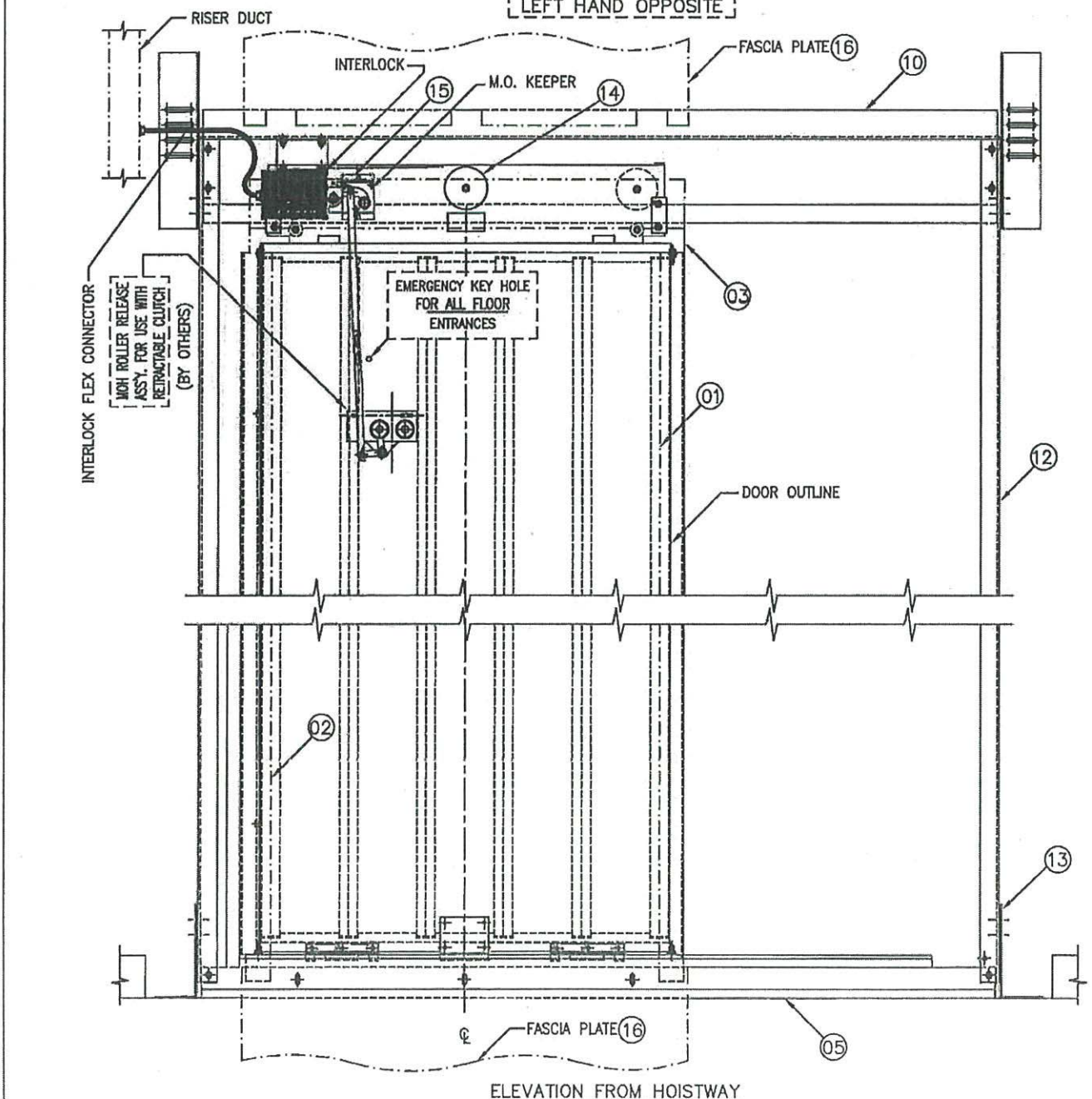
BLDG. NAME	SQ ALEXANDRIA PARK - BLOCK 11
ADDRESS	TORONTO, ONT.
THREE (3) GEARED PASSENGER ELEVATORS	
SELCO ELEVATORS LTD.	
DRWG. No.	SQ ALEX PARK
REV.	B
SHEET	8 of 8

NO RECESS AT REAR DOORS.

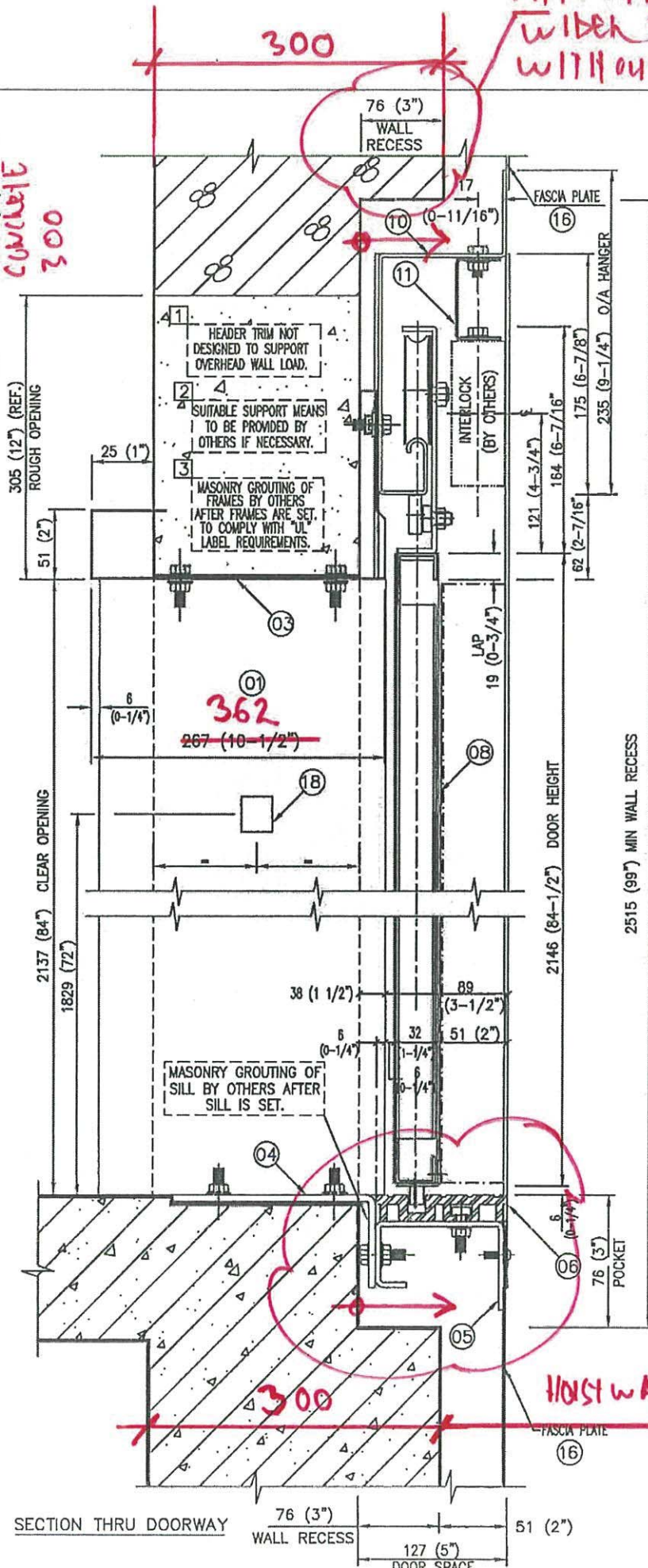
PIT SHAFT FROM P2 TO LEVEL 2 W/S. 70 mm. WIDER TO ACCOMMODATE HOISTWAY DOOR WITH OUT RECESS. SEE ARCHITECTURAL & SELCO SHOPS.



PLAN VIEW
RIGHT HAND AS SHOWN
LEFT HAND OPPOSITE



ELEVATION FROM HOISTWAY



SECTION THRU DOORWAY

THIS DRG. NO.	QTY.	PER UNIT	ITEM NO.	DESCRIPTION OR NAME OF PART	IDENTIFICATION NUMBER
003	002	001	01	SLIDE POST	
			02	STRIKE POST	
			03	HEAD TRIM	
			04	SUPPORT ANGLE	
			05	SILL SUPPORT CHANNEL	
			06	SILL --- ALUMINUM	
			07		
			08	HALL DOOR ASSY	
			09	SIGHT GUARD	
			10	HEADER TRACK	
			11	INTERLOCK SUPPORT BRACKET	
			12	STRUT CHANNEL	
			13	FIX ANGLES	
			14	SPIRATOR	
			15	MOUNTING BRACKET FOR INTERLOCK KEEPER	
			16	FASCIA PLATE	
			17	ACCESS KEY SWITCH @ P2 FLOOR	
			18	JAMB PLATE	

- 2 SETS OF LH ENTRANCES REQUIRED FOR ELEVATOR 1 (C.R.S. PRIME POWDER COAT FIN. @ P1 & P2 FLOORS)
 - 2 SETS OF RH ENTRANCES REQUIRED FOR ELEVATOR 2 (C.R.S. PRIME POWDER COAT FIN. @ P1 & P2 FLOORS)
 - 3 SETS OF RH ENTRANCES REQUIRED FOR ELEVATOR 3 (C.R.S. PRIME POWDER COAT FIN. @ 1ST; P1 & P2 FLOORS)
- TABLE TO CONFIRM PAINT AT MOVING ROOM.**
- ENTRANCE DRILLED FOR G.A.L. EQUIPMENT.
 - EMERGENCY KEY-HOLE REQUIRED.
 - ENTRANCES ARE ULC LABEL AND FIRE RATED FOR 1 1/2 HOUR.
 - PLEASE CONFIRM ~~8\"/>~~
- 300 CAST IN PLACE CONCL. / SHAFT WALL.**

GROUP IDENTIFICATION

THIS DRAWING IS THE PROPERTY OF BECKETT ELEVATOR LTD. AND IS LOANED UNDER THE EXPRESS CONDITION THAT IT MUST NOT BE COPIED OR USED WITHOUT PERMISSION AND IS TO BE RETURNED ON DEMAND.

SELCO ELEVATORS LTD.

SQ ALEXANDRIA PARK, TORONTO ON BLOCK 11, ELEVATORS 1-2-3 - REAR

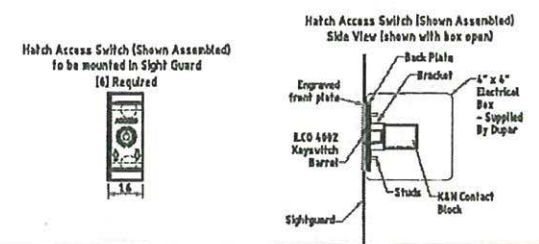
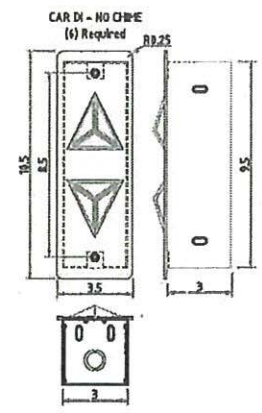
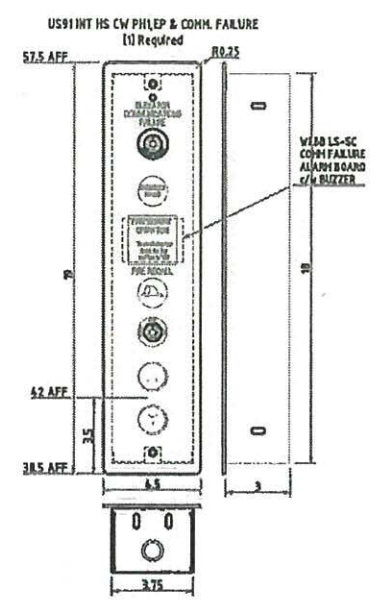
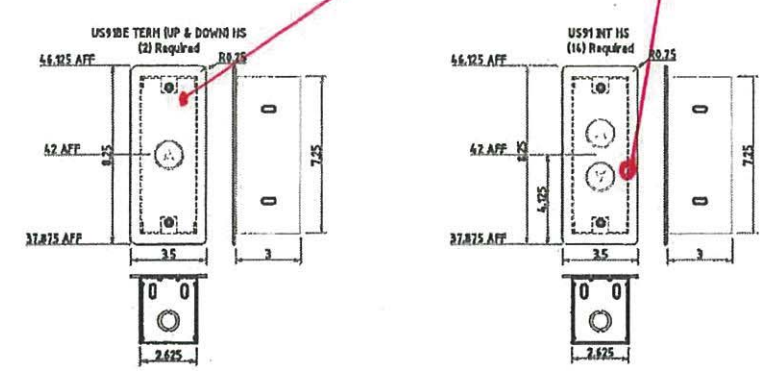
DATE: 02/20/15

SCALE: 1/8\"/>

HOISTWAY 2070 SEE SELCO SHEET 7 OF 8

RevNo	Revision note	Date	Signature	Checked

A
B
C
D
E
F
G
H



Teepie Architects INC.

Reviewed as noted

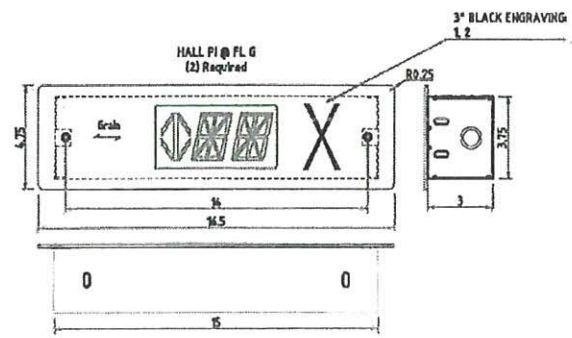
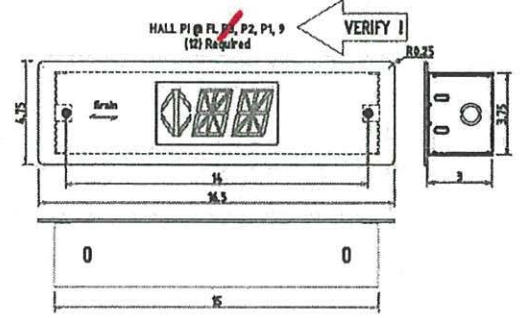
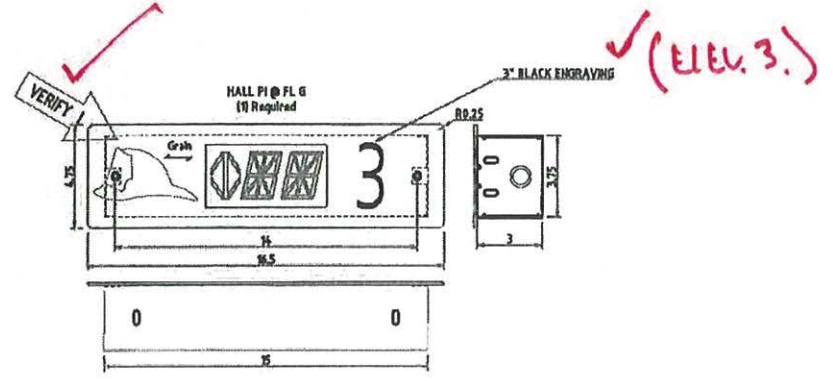
Revise and resubmit

Not Reviewed

Date: 2015-07-23

Reviewed by:

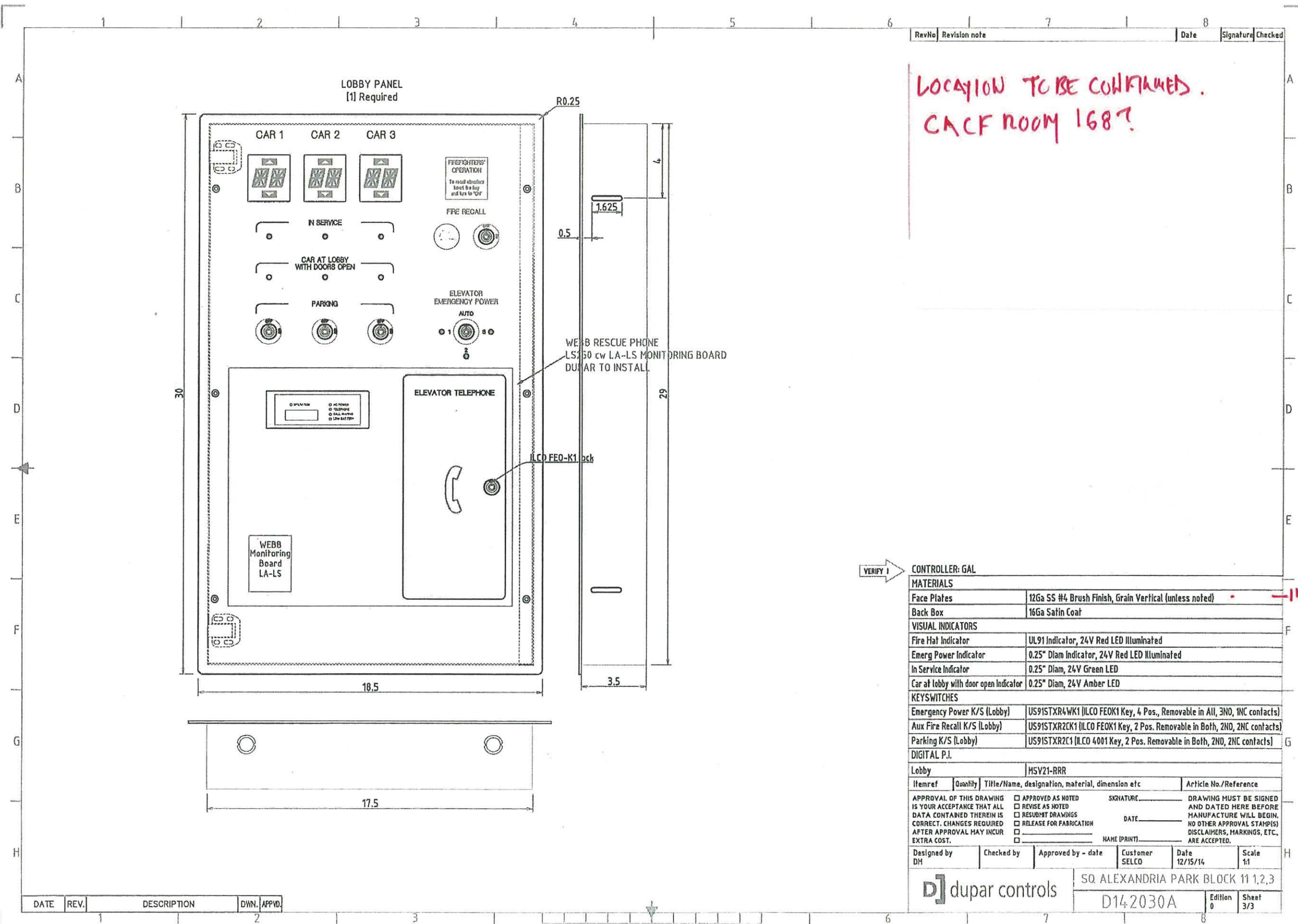
This review by Teepie Architects Inc. is for the sole purpose of ascertaining conformance with the general design concept. This review shall not mean that Teepie Architects Inc. approves the detailed design inherent in the shop drawings, responsibility for which shall remain with the Contractor submitting same, and such review shall not relieve the Contractor of the responsibility for errors or omissions in the shop drawings or of the responsibility for meeting all requirements of the Contract Documents. The Contractor is responsible for dimensions to be confirmed and correlated at the job site, for information that pertains solely to fabrication processes or to techniques of construction and installation, and for coordination of the work of all trades.



CONTROLLER: GAL	
MATERIALS	
Face Plates	12Ga SS #4 Brush Finish, Grain Vertical (unless noted)
Back Box	16Ga Satin Coat
PUSHBUTTONS	
Pushbutton Style	US91BE
Contacts	2 N/O C3 for All Buttons
Button Illumination Type	24V C3 L.E.D.
VISUAL INDICATORS	
Fire Hat Indicator	UL91 Indicator, 24V Red LED Illuminated
Emergency Power Indicator	UL91 Indicator, 24V Red LED Illuminated
Direction Arrows	2.625\"/>
AUDIBLE INDICATORS	
Car Lantern Chime	N/A
KEYSWITCHES	
Access K/S (Hall)	ILCO key 4002, Double Spring Return, K&N CD2508
Fire Recall K/S	US91STR2IK1 (FE0-K1, 3 Pos., Trapped in "RESET", 2NO, 2NC contacts)
Alarm Reset K/S	US91STR2IK1 (ILCO 4001 Key, Spring return, 1NO 1NC contacts)
DIGITAL P.I.	
Hall	MH22-RRR (ARROW, 2 DIGITS)

Itemref	Quantity	Title/Name, designation, material, dimension etc	Article No./Reference
APPROVAL OF THIS DRAWING IS YOUR ACCEPTANCE THAT ALL DATA CONTAINED THEREIN IS CORRECT. CHANGES REQUIRED AFTER APPROVAL MAY INCUR EXTRA COST.		<input type="checkbox"/> APPROVED AS NOTED <input type="checkbox"/> REVISE AS NOTED <input type="checkbox"/> RESUBMIT DRAWINGS <input type="checkbox"/> RELEASE FOR FABRICATION <input type="checkbox"/> _____ NAME (PRINT)	SIGNATURE _____ DATE _____ DRAWING MUST BE SIGNED AND DATED HERE BEFORE MANUFACTURE WILL BEGIN. NO OTHER APPROVAL STAMP(S) DISCLAIMERS, MARKINGS, ETC. ARE ACCEPTED.
Designed by DM	Checked by	Approved by - date	Customer SELCD
Date 12/15/14		Scale 1:1	
dupar controls			SQ ALEXANDRIA PARK BLOCK 11 1,2,3 D142030A Edition 0 Sheet 2/3

DATE	REV.	DESCRIPTION	DWN.	APPVD.



LOCATION TO BE CONFIRMED.
CACF ROOM 168?

VERIFY ↓

CONTROLLER: GAL			
MATERIALS			
Face Plates	12Ga SS #4 Brush Finish, Grain Vertical (unless noted) - INTENTIONAL		
Back Box	16Ga Safin Coat		
VISUAL INDICATORS			
Fire Hat Indicator	UL91 Indicator, 24V Red LED Illuminated		
Emerg Power Indicator	0.25" Diam Indicator, 24V Red LED Illuminated		
In Service Indicator	0.25" Diam, 24V Green LED		
Car at lobby with door open indicator	0.25" Diam, 24V Amber LED		
KEYSWITCHES			
Emergency Power K/S (Lobby)	US91STXR4WK1 (ILCO FEOK1 Key, 4 Pos., Removable in All, 3NO, 1NC contacts)		
Aux Fire Recall K/S (Lobby)	US91STXR2CK1 (ILCO FEOK1 Key, 2 Pos. Removable in Both, 2NO, 2NC contacts)		
Parking K/S (Lobby)	US91STXR2C1 (ILCO 4001 Key, 2 Pos. Removable in Both, 2NO, 2NC contacts)		
DIGITAL P.I.			
Lobby	MSY21-RRR		
Itemref	Quantity	Title/Name, designation, material, dimension etc	Article No./Reference
APPROVAL OF THIS DRAWING		<input type="checkbox"/> APPROVED AS NOTED	SIGNATURE _____
IS YOUR ACCEPTANCE THAT ALL DATA CONTAINED THEREIN IS CORRECT. CHANGES REQUIRED AFTER APPROVAL MAY INCUR EXTRA COST.		<input type="checkbox"/> REVISE AS NOTED	DATE _____
		<input type="checkbox"/> RESUBMIT DRAWINGS	
		<input type="checkbox"/> RELEASE FOR FABRICATION	
		<input type="checkbox"/> _____	NAME (PRINT) _____
Designed by	Checked by	Approved by - date	Customer
DH			SELCO
			Date
			12/15/14
			Scale
			1:1
dupar controls		SQ ALEXANDRIA PARK BLOCK 11 1,2,3	
		D14-2030A	Edition
		0	Sheet
			3/3

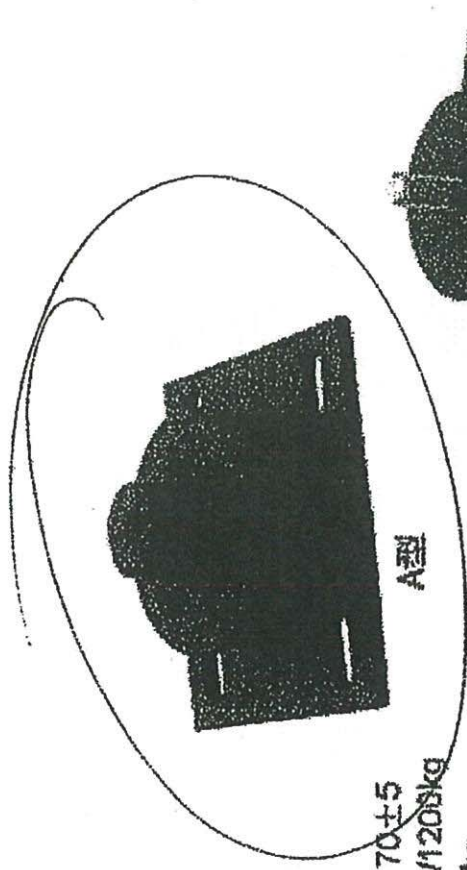
DATE	REV.	DESCRIPTION	DWN.	APPVD.



减震垫

Absorber

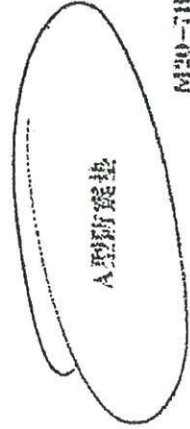
硬度 Shore 70±5
 变形量 2mm/1200kg
 极限载荷 6000kg
 粘合力 Agglutinated Power: ≥25kg/cm²



A型



B型



A型防震垫

B型防震垫

