

- IMPEDANCE SHOWN IS CALCULATED VALUE - NOT GUARANTEED
 - SERIAL NUMBER AND TESTED IMPEDANCE WILL BE SHOWN ON TRANSFORMER NAMEPLATE

FOR APPROVAL ONLY



JAY ELECTRIC LIMITED	
<input checked="" type="checkbox"/> Reviewed	<input type="checkbox"/> Reviewed as noted
<input type="checkbox"/> Resubmit	
DATE	REVIEWED BY
Mar. 11, 2015	Gary R Beer

MEDIUM VOLTAGE DRY TYPE TRANSFORMER
 TRANSFORMATEUR A SEC A MOYENNE TENSION
 MADE IN CANADA FABRIQUE AU CANADA

HV HT	13800V		
BIL kV	95		
TERMINALS BORNES	H1 H2 H3		
VOLTS	AMPS AMPERES	% RATED VOLTAGE % TENSION ASSIGNE	CONNECTION EACH PHASE CONNEXION CHAQUE PHASE
14490	47.8	105	1-2
14145	49.0	102.5	2-3
13800	50.2	100	3-4
13455	51.5	97.5	4-5
13110	52.8	95	5-6

CUSTOMER REF. REF. DU CLIENT	
SERIAL NO. No. DE SERIE	
PART NO. No. PIECE	214426
PHASE	3
TYPE CLASS	ANN
kVA	1200
TEMP. RISE deg. C ECHAUFFEMENT	150
TEMP. CLASS CLASSE TEMP.	220
FREQ. HZ FREQUENCE HZ	60
IMPEDANCE % @ 170 °C	
BASE kVA KVA DE BASE	1200
ENCL. TYPE/CATEGORY TYPE DE BOITIER/CATEGORIE	2S* C
CORE & COIL WT. NOYAU ET ENROULEMENT POIDS	7000 LBS
TOTAL WT. POIDS TOTAL	8500 LBS
WINDING ENROULEMENT	AL
ENERGY REGULATIONS REGLEMENTS DE ENERGETIQUE	CEE ACT SOR/2011-182

NOVATREND ENGINEERING GROUP LTD.

600Y/346V
~~1155~~

THIS REVIEW IS MADE ONLY TO VERIFY CONFORMITY WITH THE GENERAL DESIGN CONCEPT AND DOES NOT IMPLY APPROVAL OF THE DETAIL DESIGN INHERENT IN THE SHOP DRAWINGS, RESPONSIBILITY FOR WHICH REMAINS WITH THE CONTRACTOR. THE CONTRACTOR IS RESPONSIBLE FOR ERRORS & OMISSIONS ON THE SHOP DRAWINGS, FOR INFORMATION RELATING SOLELY TO FABRICATION PROCESSES & CONSTRUCTION TECHNIQUES AND FOR MEETING ALL CONTRACTUAL REQUIREMENTS INCLUDING CO-ORDINATION OF FIELD DIMENSIONS & CO-ORDINATION OF THE WORK OF ALL HIS SUB-TRADES.

- REVIEWED
- REVIEWED AS NOTED
- REVISE & RESUBMIT
- REJECTED

Kevin Chen 2015-03-26
 REVIEWED BY DATE

ALSO VERIFIED IN ACCORDANCE TO ENERGY STANDARD C802.2-12 BY UNDERWRITERS LABORATORIES INC. © 3VJ6
 * NEMA-2 WITH SPRINKLER HOODS

DO NOT INSTALL ON OR OVER COMBUSTABLE SURFACES
 NE PAS INSTALLER SUR OU AU-DESSUS DE SURFACES COMBUSTIBLES
 DO NOT INSTALL IN AREAS ACCESSIBLE TO THE PUBLIC
 NE PAS INSTALLER DANS DES ENDROITS ACCESSIBLES AU PUBLIC

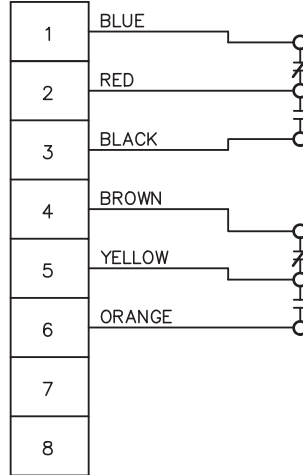
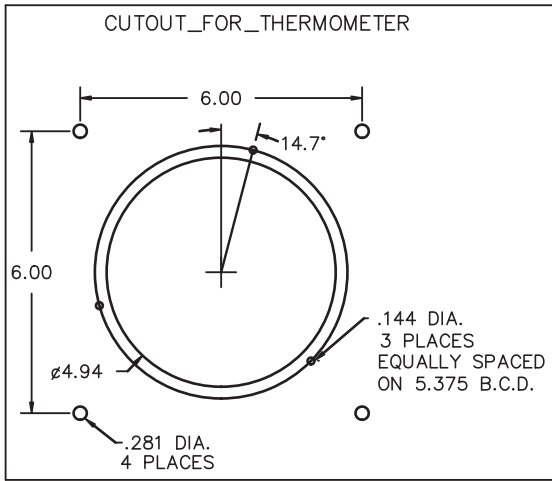
SUITABLE FOR NONSINUSOIDAL LOAD CURRENT WITH f_{HL} NOT TO EXCEED _____ PER ANSI C57.110 np10591hbz



TITLE: 3PH POWER TRANSFORMER NAMEPLATE INFORMATION			
DES: DCORTEZ			
DATE: 15/03/06			
SCALE: NTS			
NO.	DATE	BY	REVISION

SHEET 1 OF 2
 EDB 214426

FOR APPROVAL ONLY

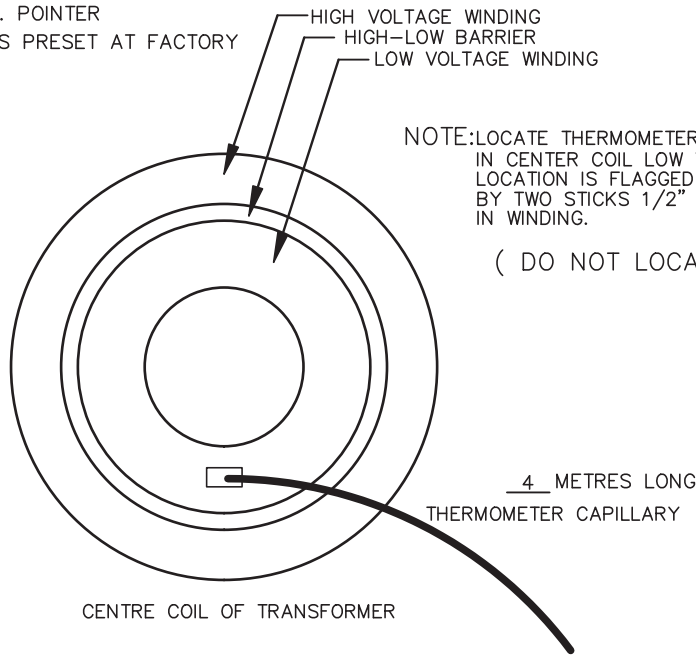


SWITCH_#1
SET_AT_200____°C

SWITCH_#2
SET_AT_220____°C

SWITCH_RATINGS
10 A @ 125/250/480 VAC INDUCTIVE 0.75 P.F.
0.50 A @ 125 VDC NON-INDUCTIVE
0.25 A @ 250 VDC NON-INDUCTIVE

THERMOMETER_C/W
WHITE DRAG POINTER
RED MAX. POINTER
CONTACTS PRESET AT FACTORY



NOTE: LOCATE THERMOMETER CAPILLARY BULB IN CENTER COIL LOW VOLTAGE WINDING. LOCATION IS FLAGGED AND ALSO IDENTIFIED BY TWO STICKS 1/2" APART MIDWAY RADIALLY IN WINDING.

(DO NOT LOCATE IN H.V. WINDING)

JAY ELECTRIC LIMITED	
<input checked="" type="checkbox"/> Reviewed	
<input type="checkbox"/> Reviewed as noted	
<input type="checkbox"/> Resubmit	
DATE	REVIEWED BY
Mar. 11, 2015	Gary R Beer

NOTE: MAINTAIN DISTANCE OF 8 IN. BETWEEN CAPILLARY AND LIVE H.V. PARTS
MAINTAIN DISTANCE OF 1 IN. BETWEEN CAPILLARY AND LIVE L.V. PARTS

INTERNAL REF.: qual2c

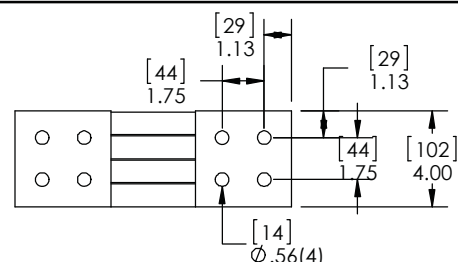


TITLE: 3PH POWER TRANSFORMER MOUNTING AND WIRING DETAILS FOR QUALITROL THERMOMETER MODEL# 105-248			
			DES: DCORTEZ
			DATE: 15/03/06
NO.	DATE	BY	REVISION
			SCALE: N.T.S.

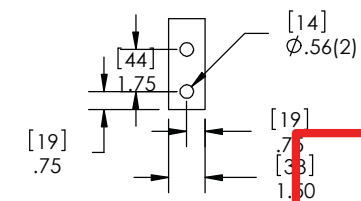
SHEET 2 OF 2

EDB 214426

0.0 kvaig 2015/03/11 12:25

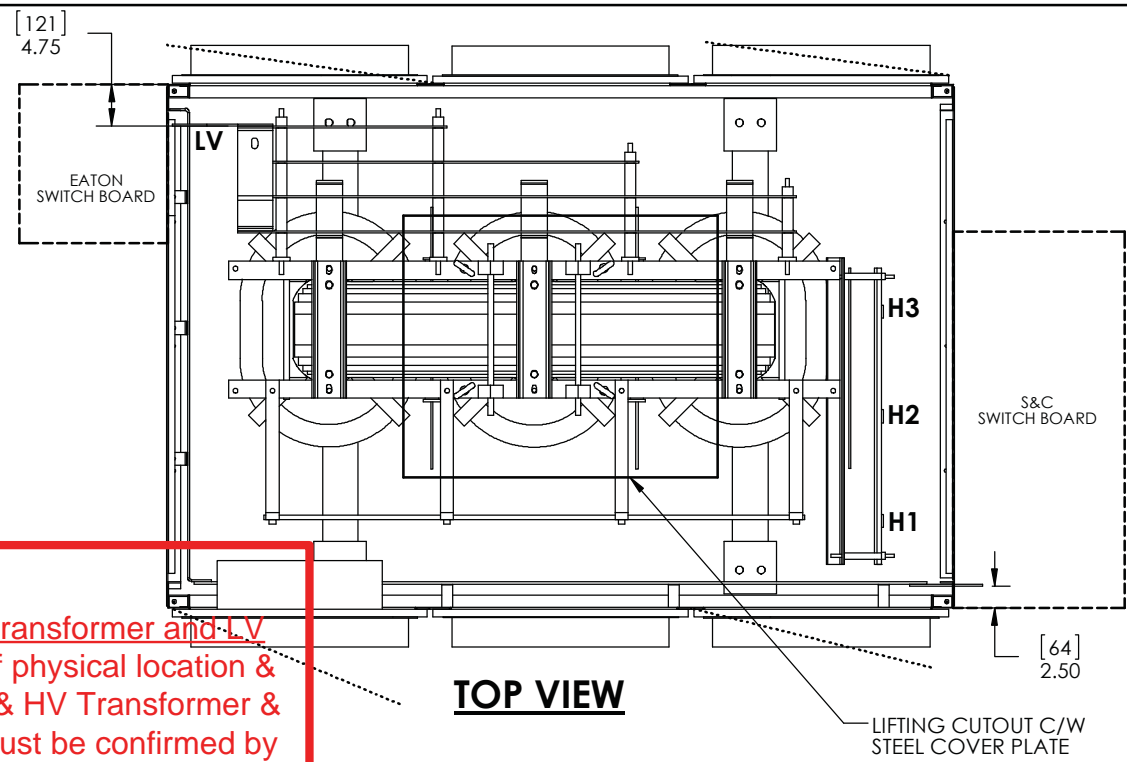


LV TERMINAL
1/4" THICK. CU
BRAIDED FLEX CONNECTOR
1/PER TERMINATION



HV TERMINAL
0.25[6] x 1.50[38] A

Close Coupling of HV switchgear, HV Transformer and LV secondary switchboard - Coordination of physical location & phasing arrangement of HV Switchgear & HV Transformer & Switchboard bussing & supply of links must be confirmed by both HV Switchgear Manuf., HV Transformer Manuf. and Switchboard Manuf. prior to fabrication of equipment.



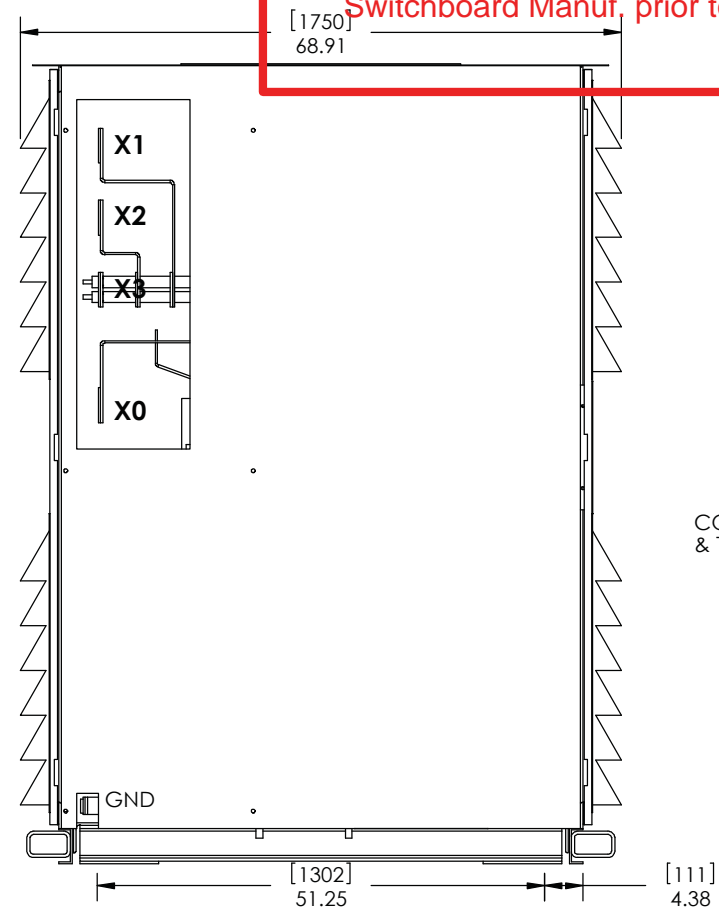
TOP VIEW

CUSTOMER NOTES:
CUSTOMER: VAUGHAN ELECTRICAL
CUSTOMER P.O.: 82660

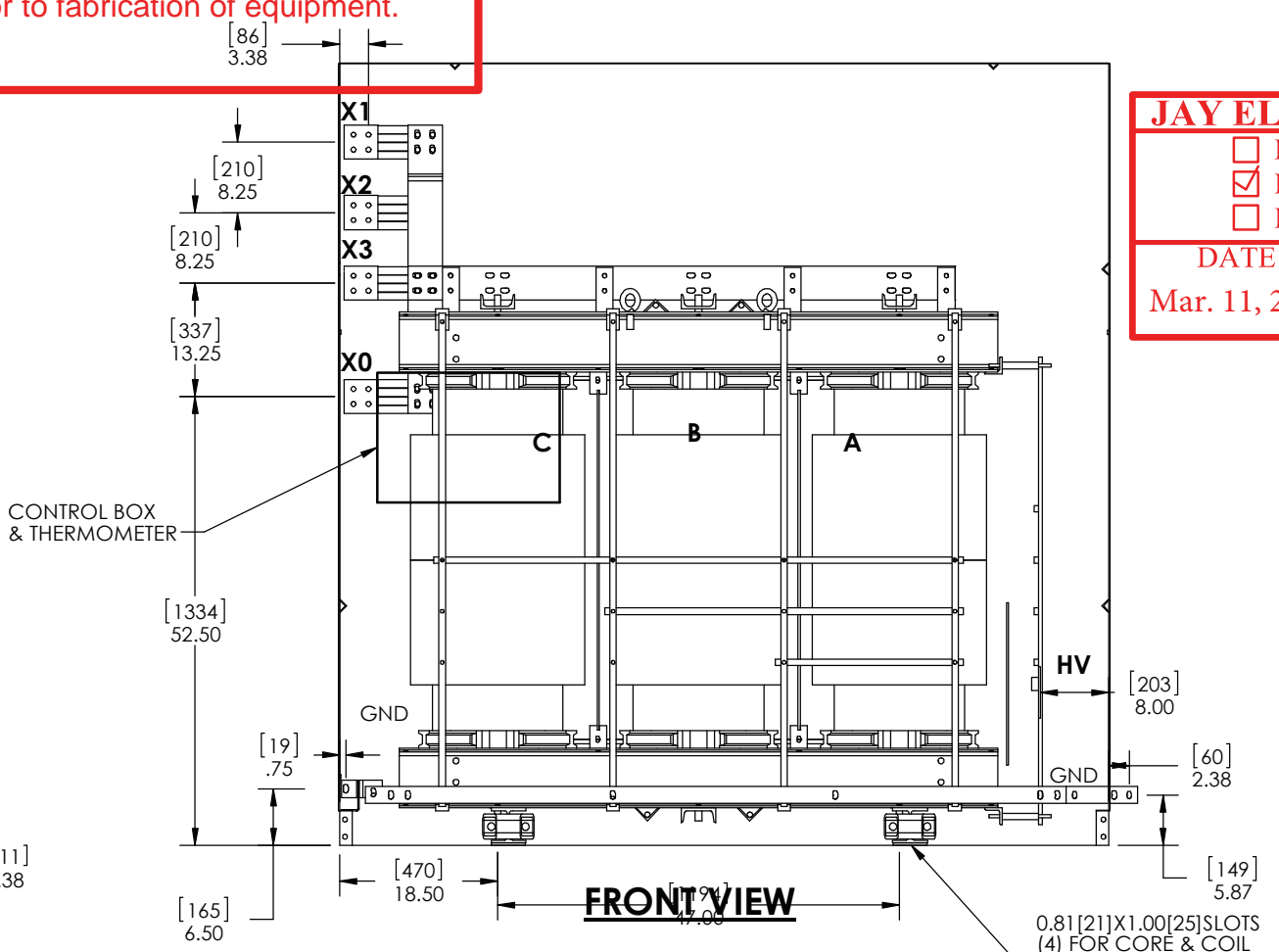
FOR ELECTRICAL CHARACTERISTICS
SEE NAMEPLATE DWG. EDB214426 SH1

- C/W:
- ALUMINUM WINDINGS
 - PLATED COPPER GROUND BUS
 - ANTI-VIBRATION PADS
 - HV TAPS ON COIL FACE AT FRONT
 - DIAL TYPE THERMOMETER SEE EDB214426 SH2
 - TYPE 2 VENTILATED ENCLOSURE WITH SPRINKLER HOODS
 - FINISH: ANSI 61 GREY
 - VENTILATED DOORS AT FRONT & REAR
 - ** NO BOTTOM FLOOR SUPPLIED**

NOTE:
CORE & COIL AND ENCLOSURE SHIPPED AS ONE UNIT
LIFT UNIT BY CORE & COIL ONLY THRU CUTOUT IN
ENCLOSURE ROOF
REMOVE SHIPPING ANGLES & TUBES BETWEEN ENCLOSURE AND
BASE BEAMS OF CORE & COIL AND INSTALL A/V PADS
BENEATH BASE BEAMS

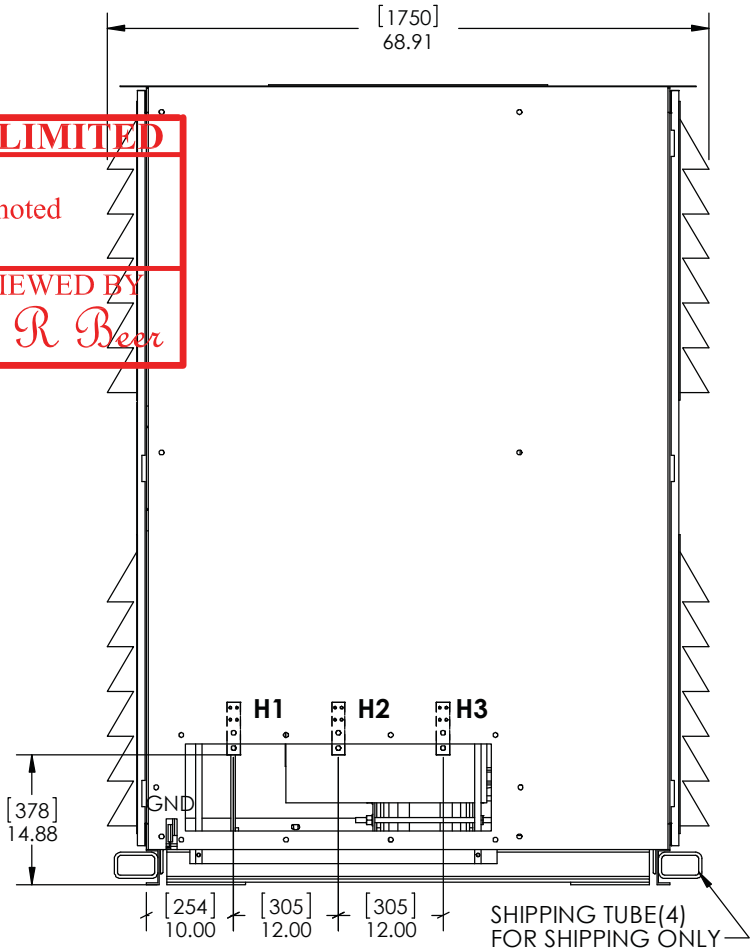


LEFT SIDE VIEW



FRONT VIEW

JAY ELECTRIC LIMITED
 Reviewed
 Reviewed as noted
 Resubmit
 DATE: Mar. 11, 2015
 REVIEWED BY: Gary R. Beer



RIGHT SIDE VIEW

0.81[21]X1.00[25]SLOTS
(4) FOR CORE & COIL
ANCHORING TO THE
FLOOR C/W: A/V PADS

TOLERANCES (UNLESS OTHERWISE SPECIFIED)	
STANDARD	CUSTOMER TERMINAL DETAILS
.X ± 0.5 [13]	.XX ± 0.06 [1.6]
.XX ± 0.25 [6]	.XXX ± 0.125 [3]
.XXX ± 0.125 [3]	

ALL DIMENSIONS IN INCHES
MM IN BRACKETS

CAD GENERATED DRAWING DO NOT MANUALLY UPDATE	REV.NO.	REVISION	DATE

HPS Hammond Power Solutions Inc.

DES'D BY:	FV
DATE:	2015-03-10
CHK'D BY:	--
DATE:	--
APP'D BY:	FV
DATE:	2015-03-10

TITLE:
**1200KVA TRANSFORMER
OUTLINE DRAWING
FOR VAUGHAN ELECTRICAL**

DWG.NO.
B214426
SHEET 1 OF 2 REV 0

B214426

THIS DRAWING CONTAINS PROPRIETARY INFORMATION BELONGING TO HAMMOND POWER SOLUTIONS INC., AND IS NOT FOR GENERAL DISTRIBUTION

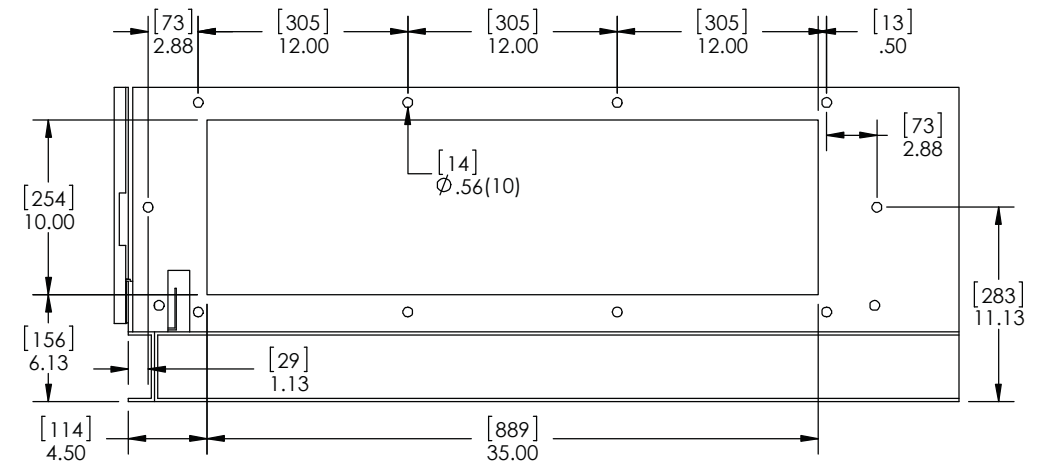
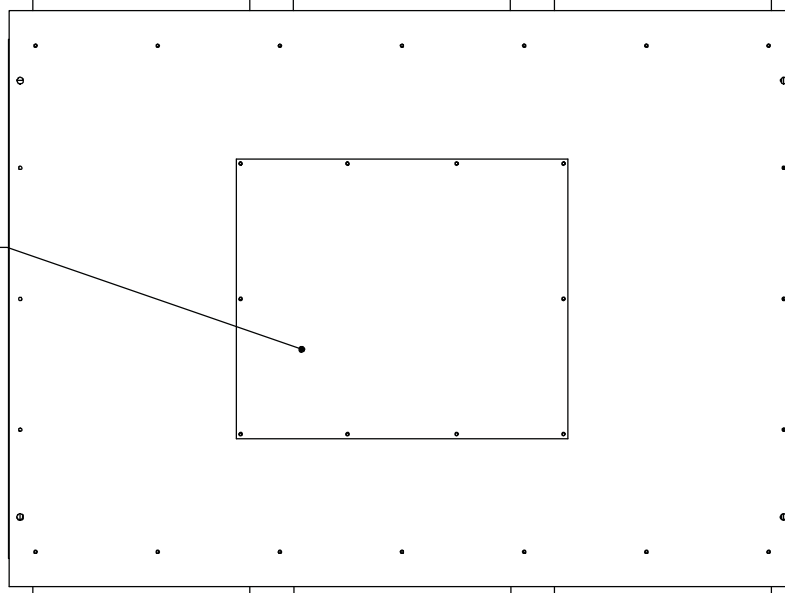
CONFIDENTIAL

FOR APPROVAL ONLY

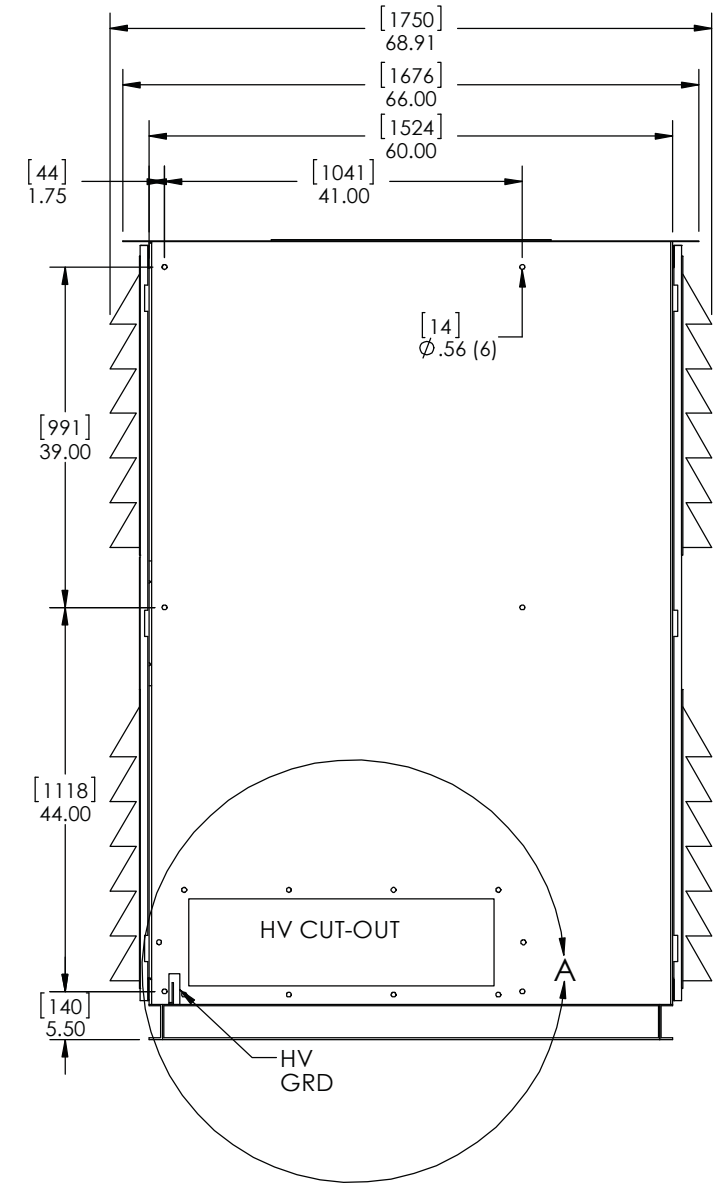
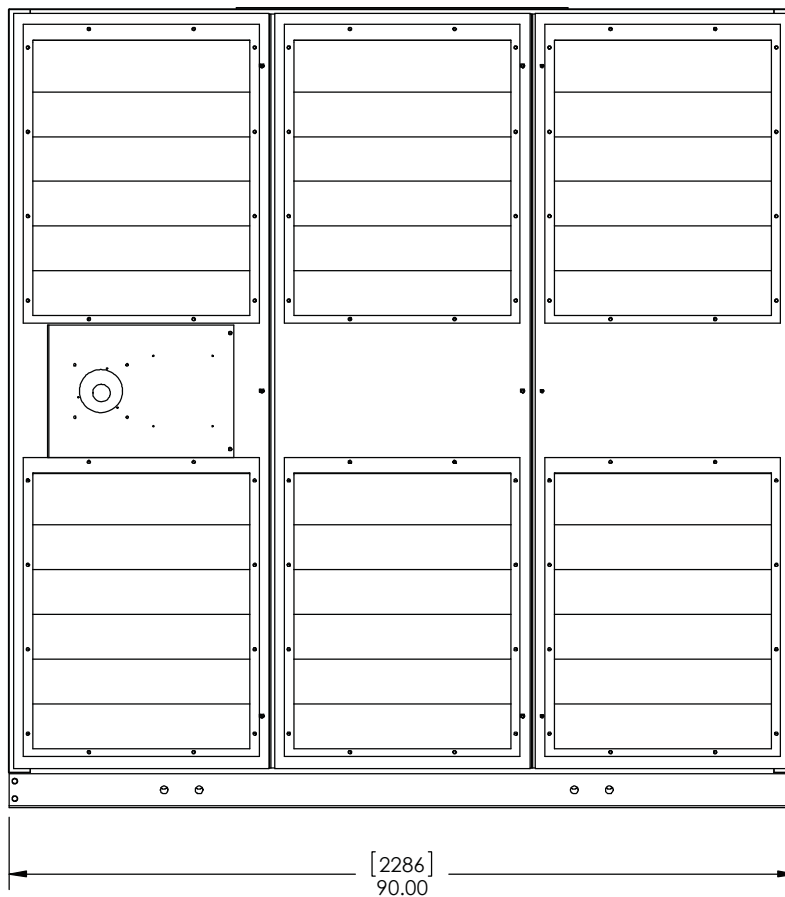
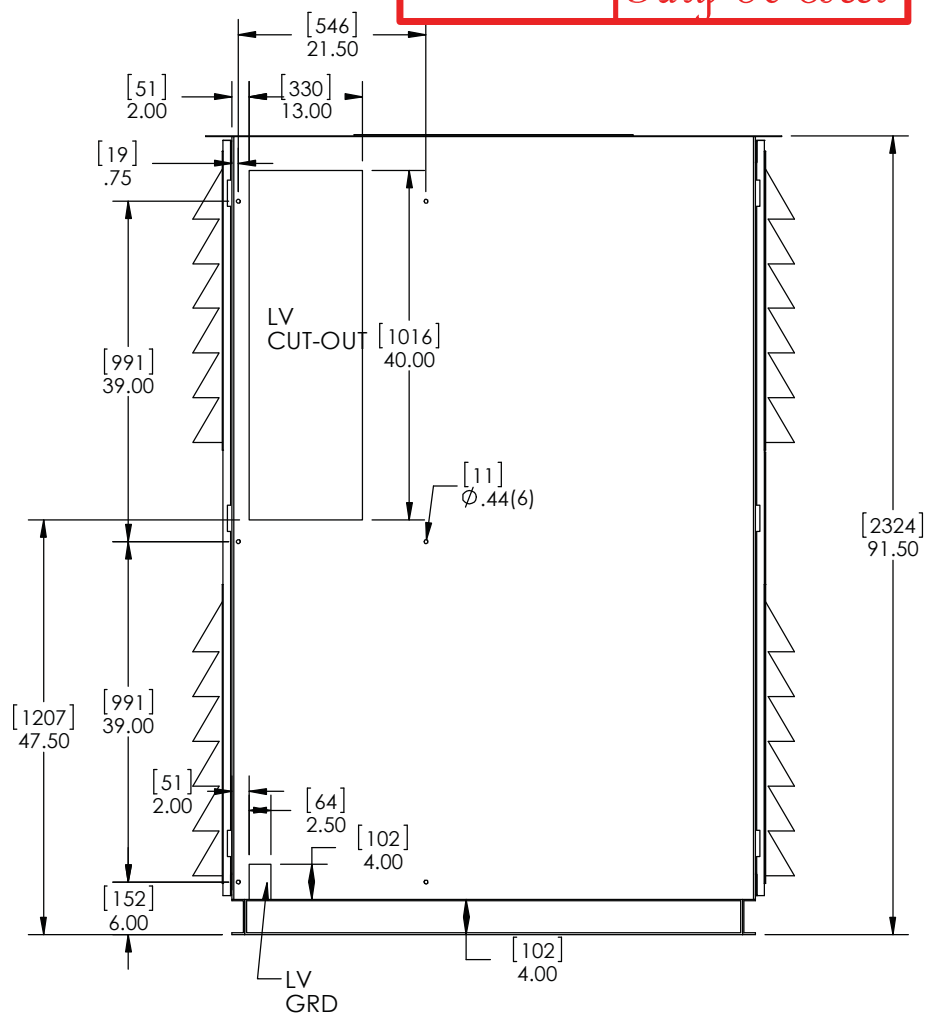
Close Coupling of HV switchgear, HV Transformer and LV secondary switchboard - Coordination of physical location & phasing arrangement of HV Switchgear & HV Transformer & Switchboard bussing & supply of links must be confirmed by both HV Switchgear Manuf., HV Transformer Manuf. and Switchboard Manuf. prior to fabrication of equipment.

JAY ELECTRIC LIMITED	
<input type="checkbox"/> Reviewed	
<input checked="" type="checkbox"/> Reviewed as noted	
<input type="checkbox"/> Resubmit	
DATE	REVIEWED BY
Mar. 11, 2015	Gary R Beer

LIFTING COVER PLATE



DETAIL A
SCALE 1 : 11



TOLERANCES (UNLESS OTHERWISE SPECIFIED)			
STANDARD		CUSTOMER TERMINAL DETAILS	
.X	± 0.5 [13]		
.XX	± 0.25 [6]	.XX	± 0.06 [2]
.XXX	± 0.125 [3]		
ALL DIMENSIONS IN INCHES MM IN BRACKETS			

**CAD
GENERATED
DRAWING
DO NOT
MANUALLY
UPDATE**

PLEASE SEE SHEET ONE
FOR REVISION LEVEL AND DETAILS



DES'D BY:	FV
DATE:	2015-03-10
CHK'D BY:	--
DATE:	--
APP'D BY:	FV
DATE:	2015-03-10

TITLE:
**1200KVA TRANSFORMER
OUTLINE DRAWING
FOR VAUGHAN ELECTRICAL**

DWG.NO.
B214426

SHEET 2 OF 2 REV 0

B214426

THIS DRAWING CONTAINS PROPRIETARY INFORMATION BELONGING TO
HAMMOND POWER SOLUTIONS INC., AND IS NOT FOR GENERAL DISTRIBUTION

CONFIDENTIAL

FOR APPROVAL ONLY