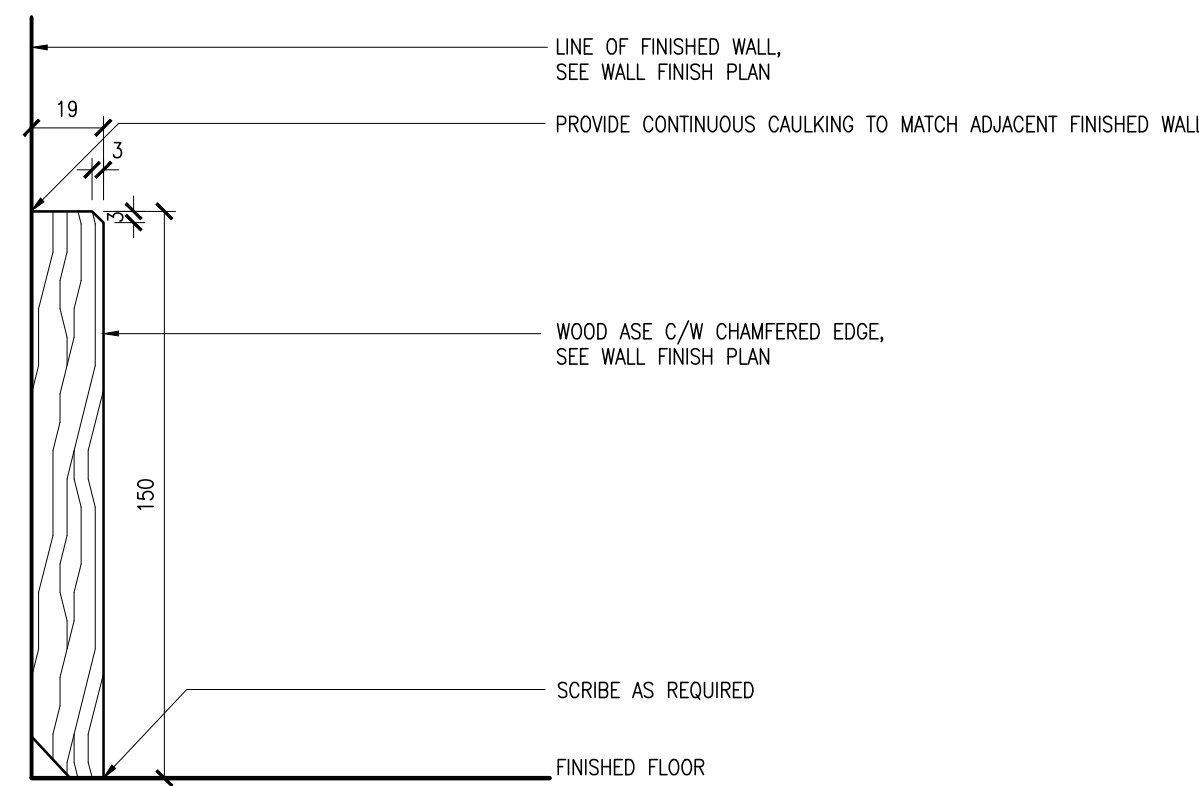
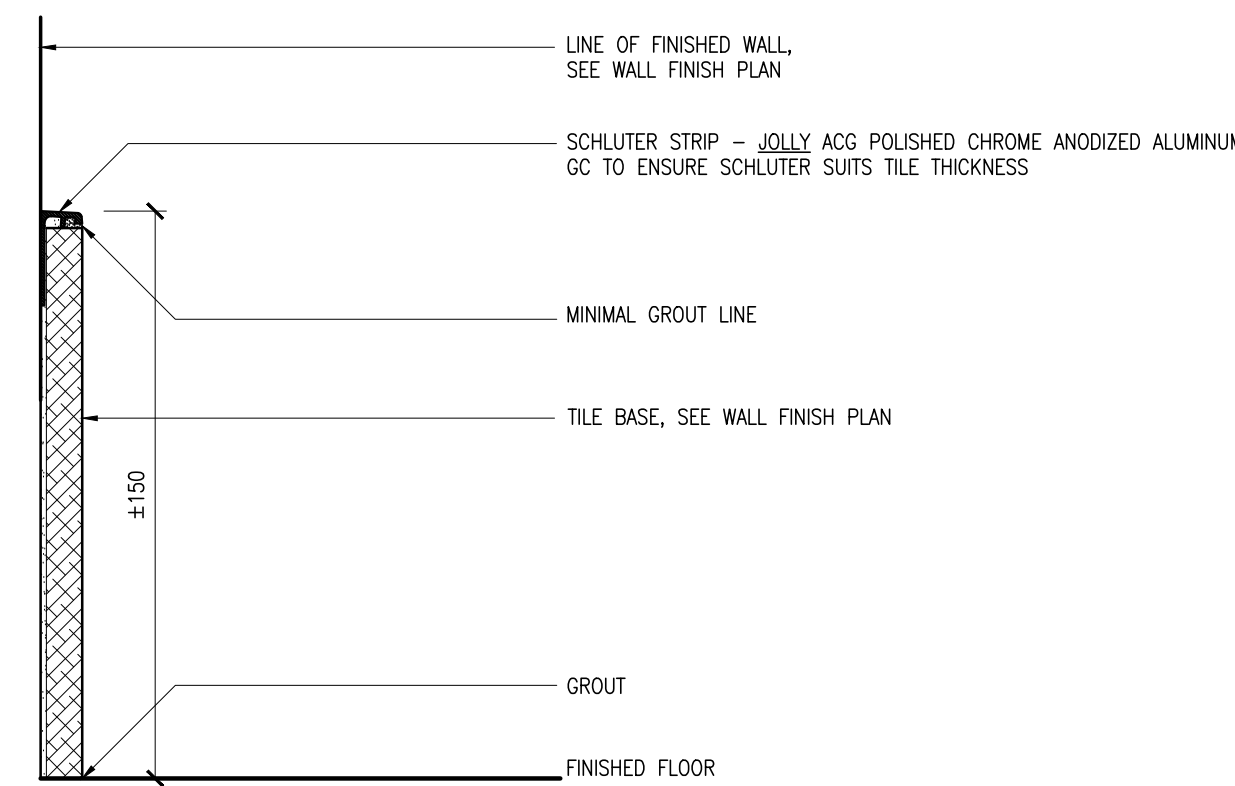


Notes:
 1. CONTRACTOR AND ALL SUB-TRADES SHALL VERIFY ALL SITE DIMENSIONS. ALL DRAWINGS, DETAILS AND SPECIFICATIONS AND REPORT ANY DISCREPANCIES TO THE INTERIOR DESIGNER IN WRITING FOR APPROVAL BEFORE PROCEEDING WITH THE WORK.
 2. CONTRACTOR AND SUB-CONTRACTORS, BEFORE PROCEEDING WITH WORK, MUST SUBMIT ALL NECESSARY SAMPLES FOR APPROVAL OF QUALITY AND FINISH TO THE INTERIOR DESIGNER.
 3. CONTRACTOR MUST COMPLY WITH THE CONTRACT DOCUMENTS, PERFORMANCE REQUIREMENTS, APPLICABLE CODES AND REGULATIONS.
 4. ALL DRAWINGS AND WRITTEN MATERIAL HEREIN CONSTITUTES THE ORIGINAL AND UNPUBLISHED WORK OF I B Y DESIGN ASSOCIATES INC. AND MAY NOT BE DUPLICATED, USED OR DISCLOSED WITHOUT PRIOR WRITTEN CONSENT OF I B Y DESIGN ASSOCIATES INC.
 5. DRAWINGS NOT TO BE SCALED

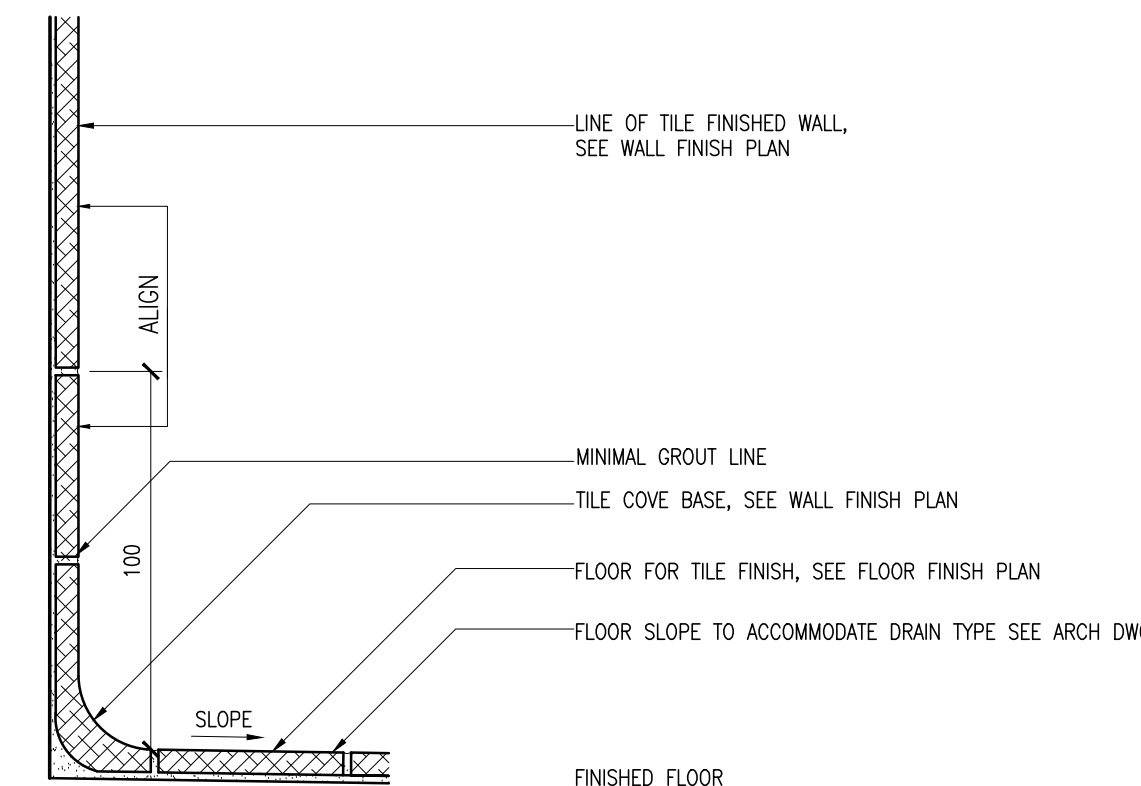
Issue:
 08 ISSUED FOR CLIENT REVIEW 16.01.15
 07 ISSUED FOR TENDER 16.03.15
 10 ISSUED FOR CONSTRUCTION 17.06.19
 -
 -
 -
 -
 -
 -
 -
 -
 -
 -



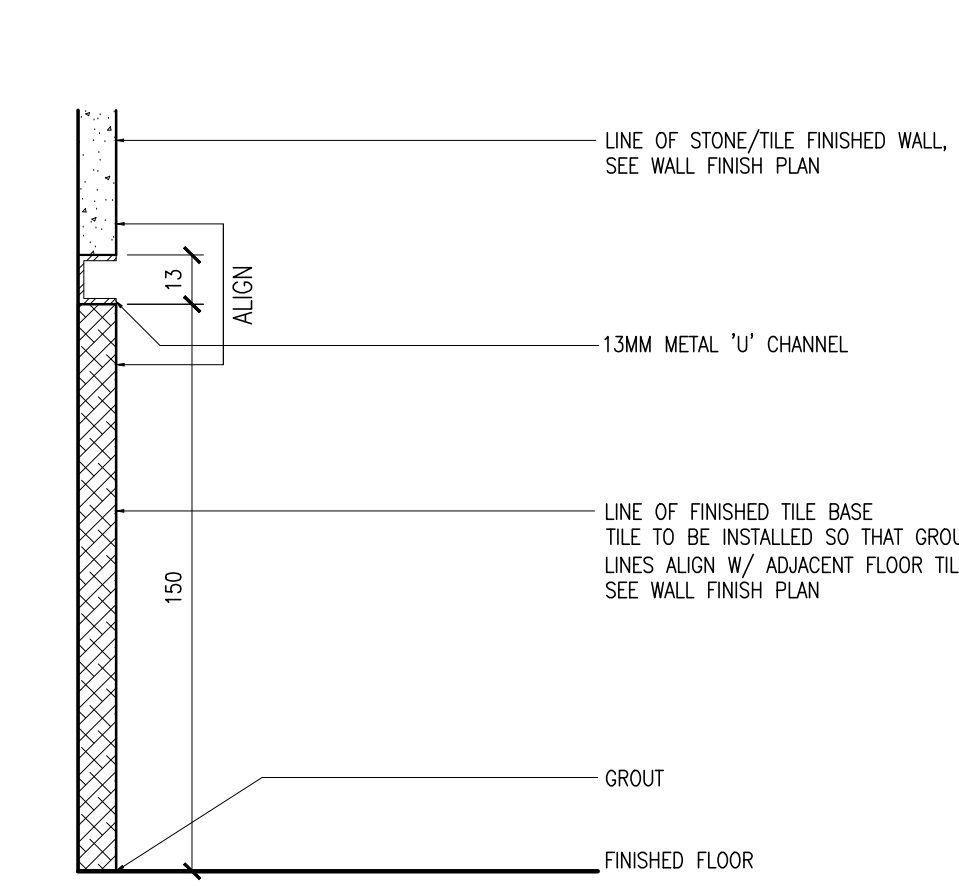
1 DETAIL - 150MM WOOD BASE AT GWB
 09.5 SCALE 1:2



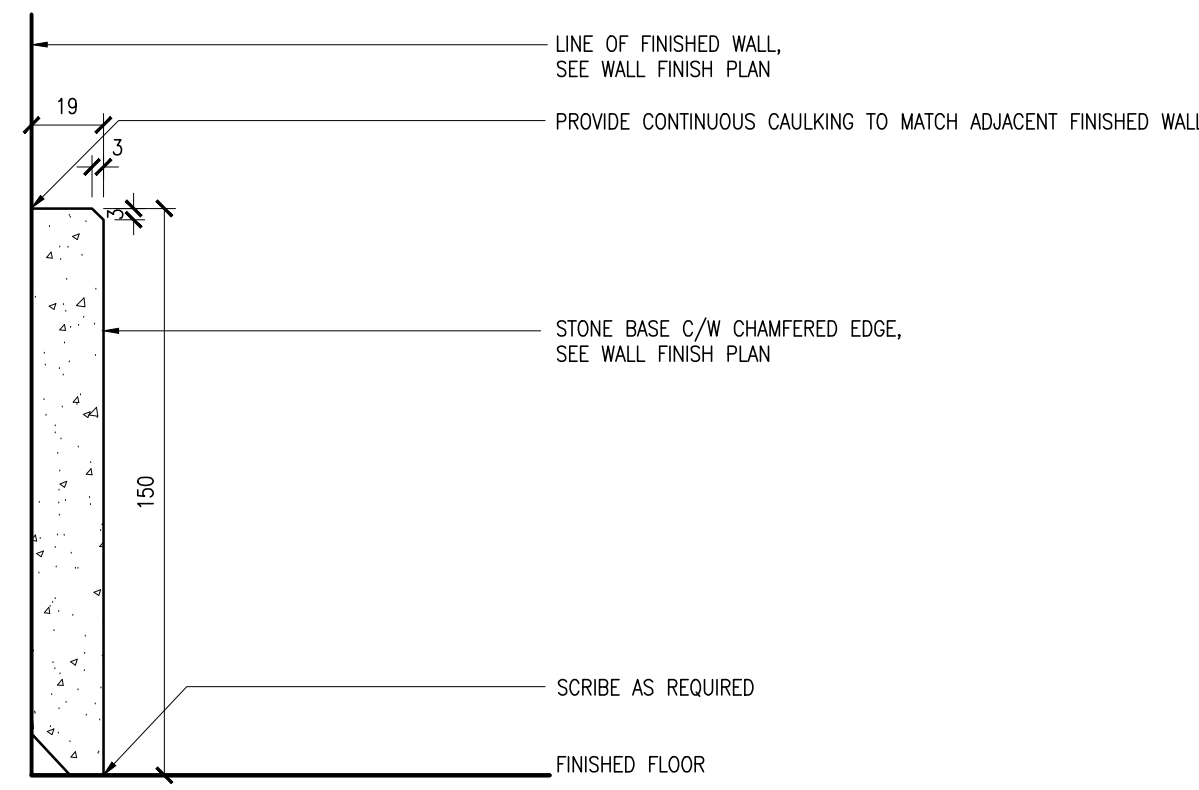
2 DETAIL - 150MM TILE BASE TO GWB
 09.5 SCALE 1:2



3 DETAIL - TILE COVE BASE AT TILE WALL
 09.5 SCALE 1:2



4 DETAIL - 150MM TILE BASE AT STONE/TILE WALL
 09.5 SCALE 1:2

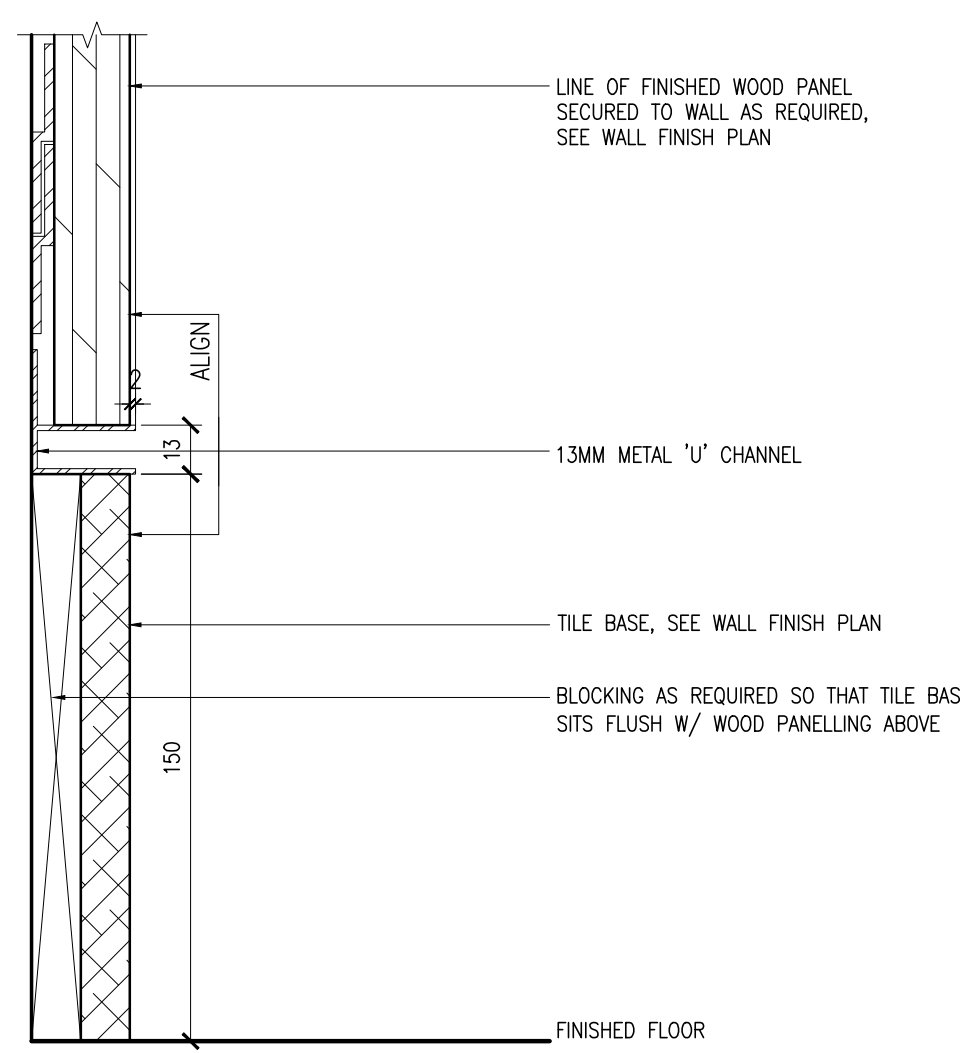


5 DETAIL - 150MM STONE BASE AT GWB
 09.5 SCALE 1:2

6 RESERVED
 09.5 SCALE 1:2

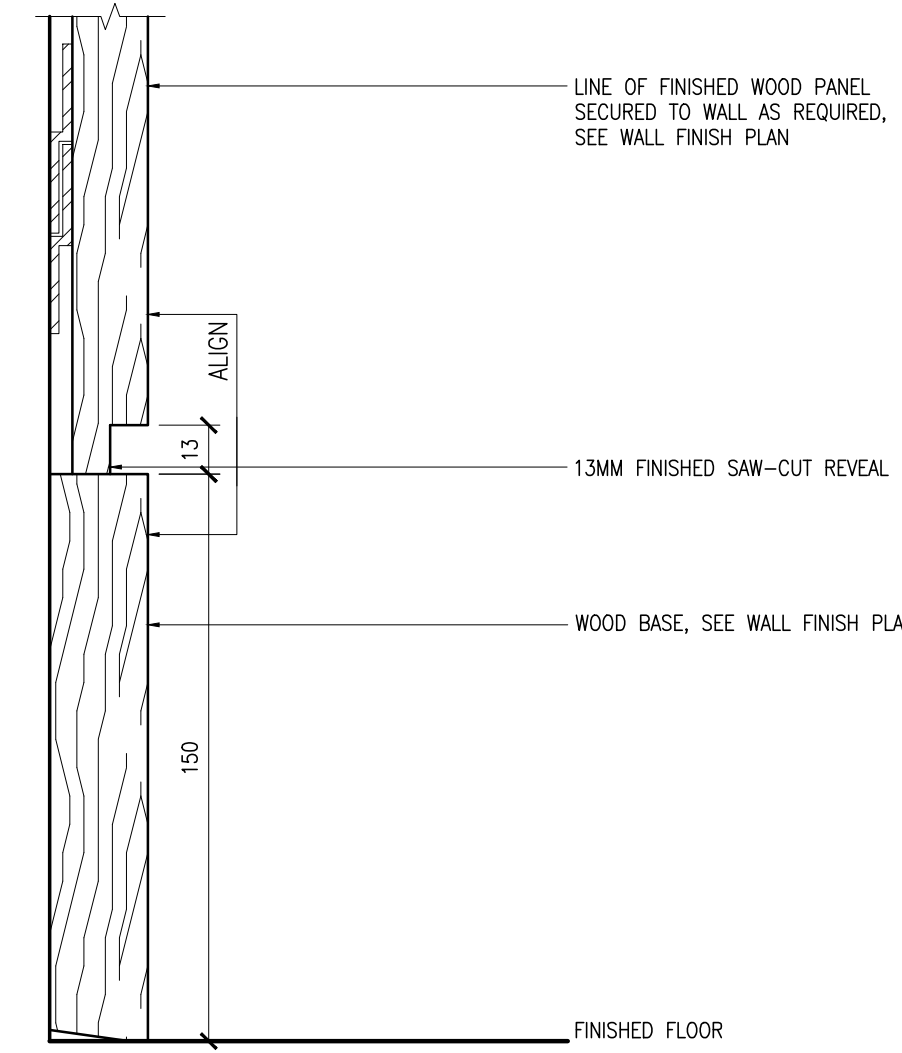
7 RESERVED
 09.5 SCALE 1:2

8 RESERVED
 09.5 SCALE 1:2



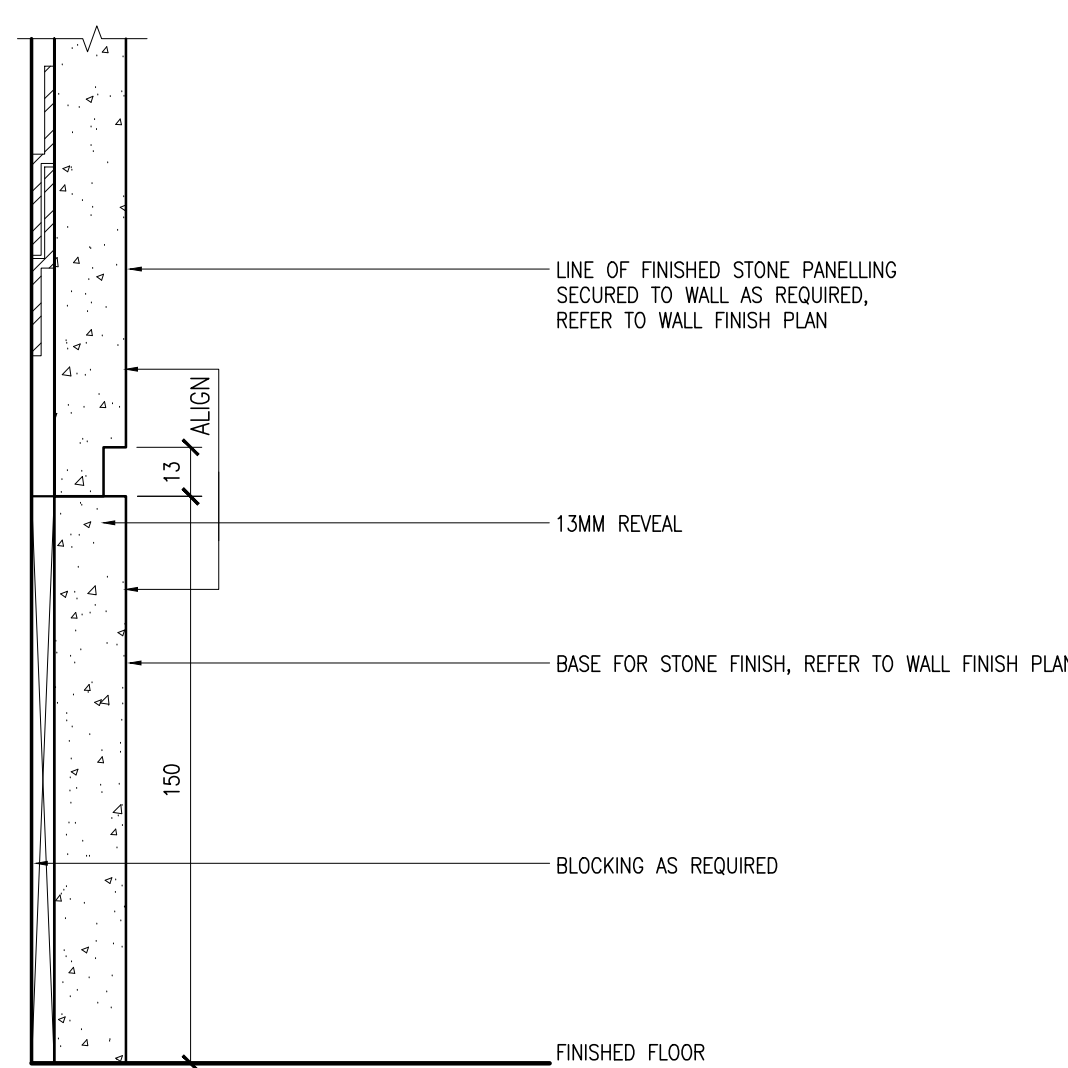
9 DETAIL - 150MM TILE BASE AT WOOD PANELLING
 09.5 SCALE 1:2

10 RESERVED
 09.5 SCALE 1:2

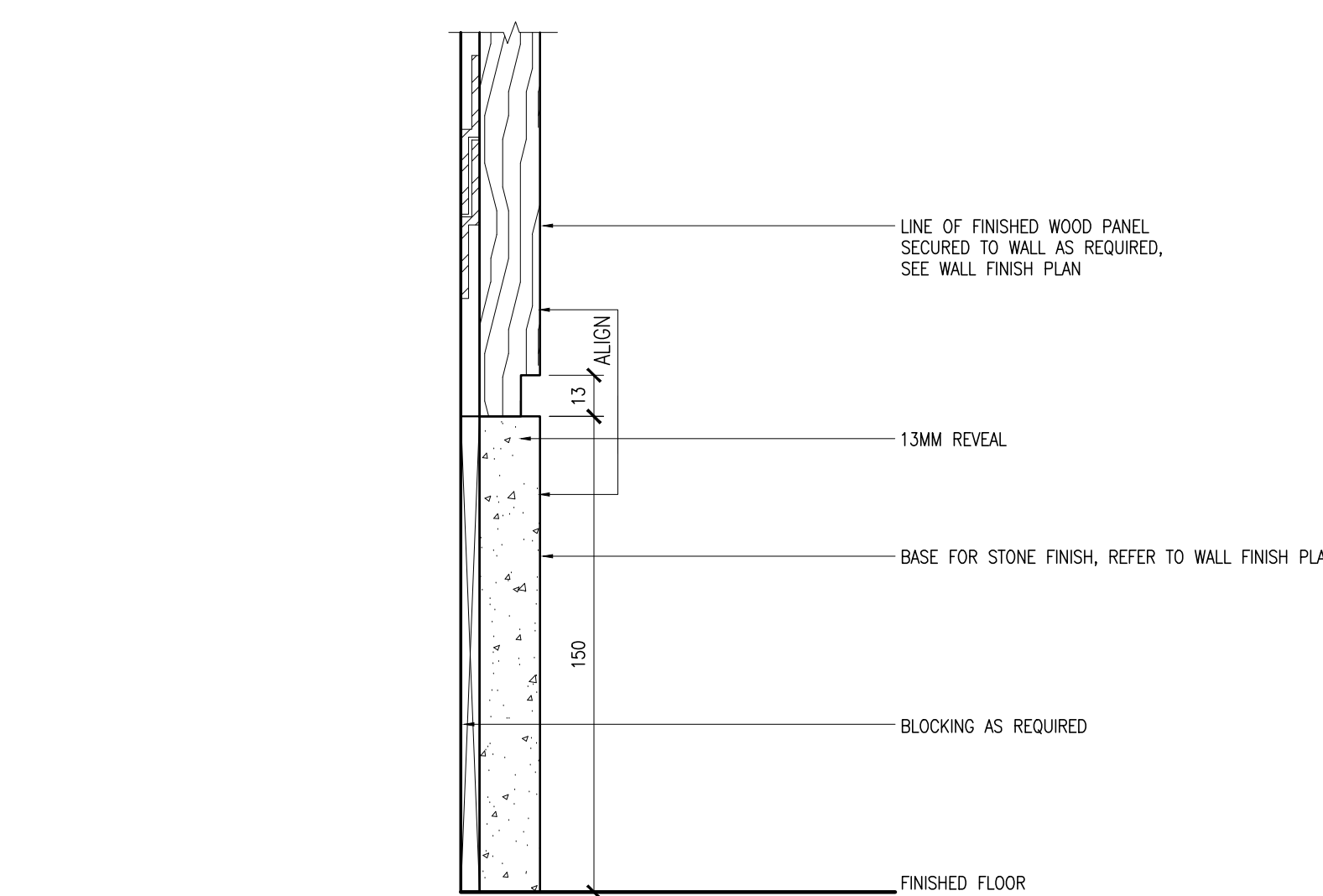


11 DETAIL - 150MM WOOD BASE AT WOOD PANELLING
 09.5 SCALE 1:2

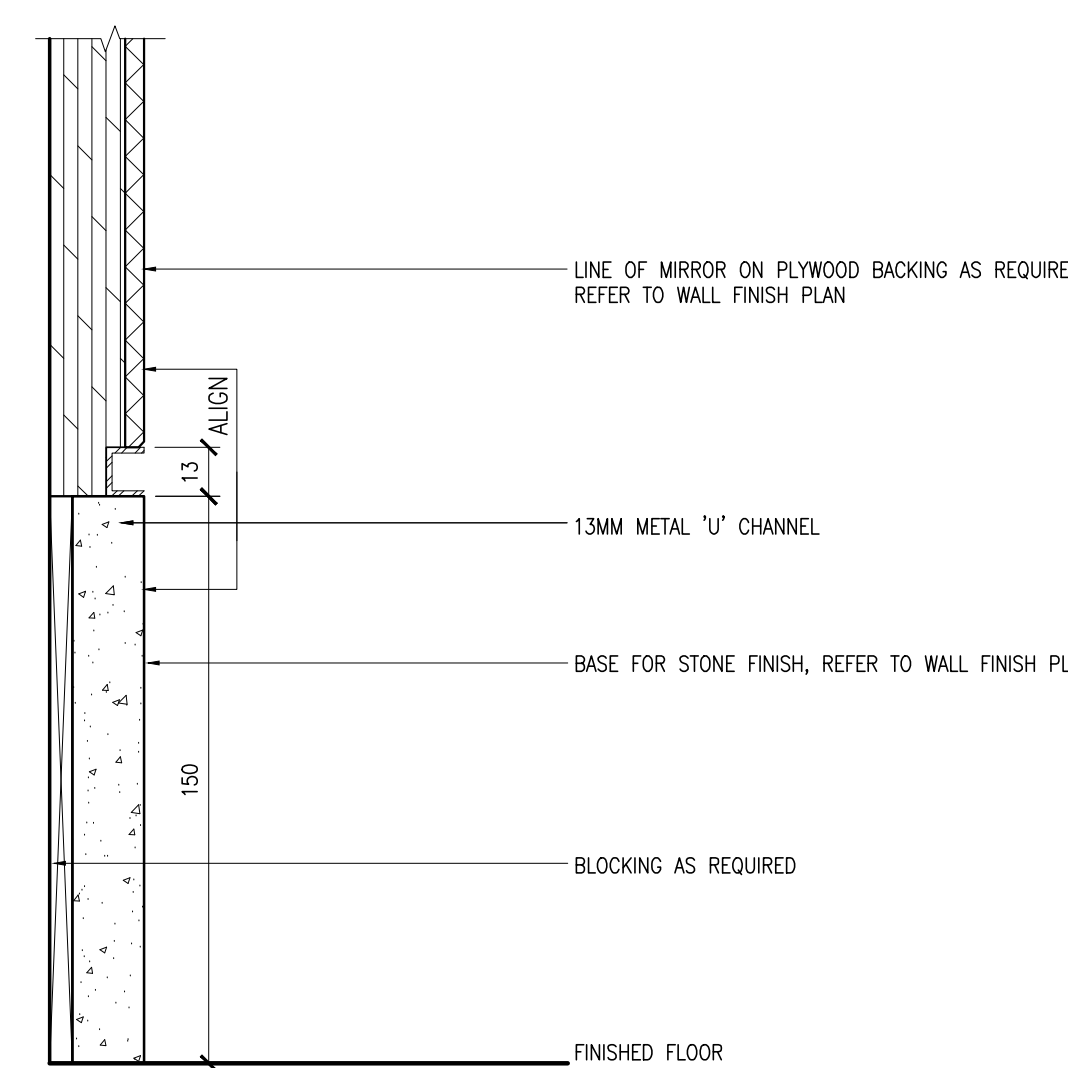
12 RESERVED
 09.5 SCALE 1:2



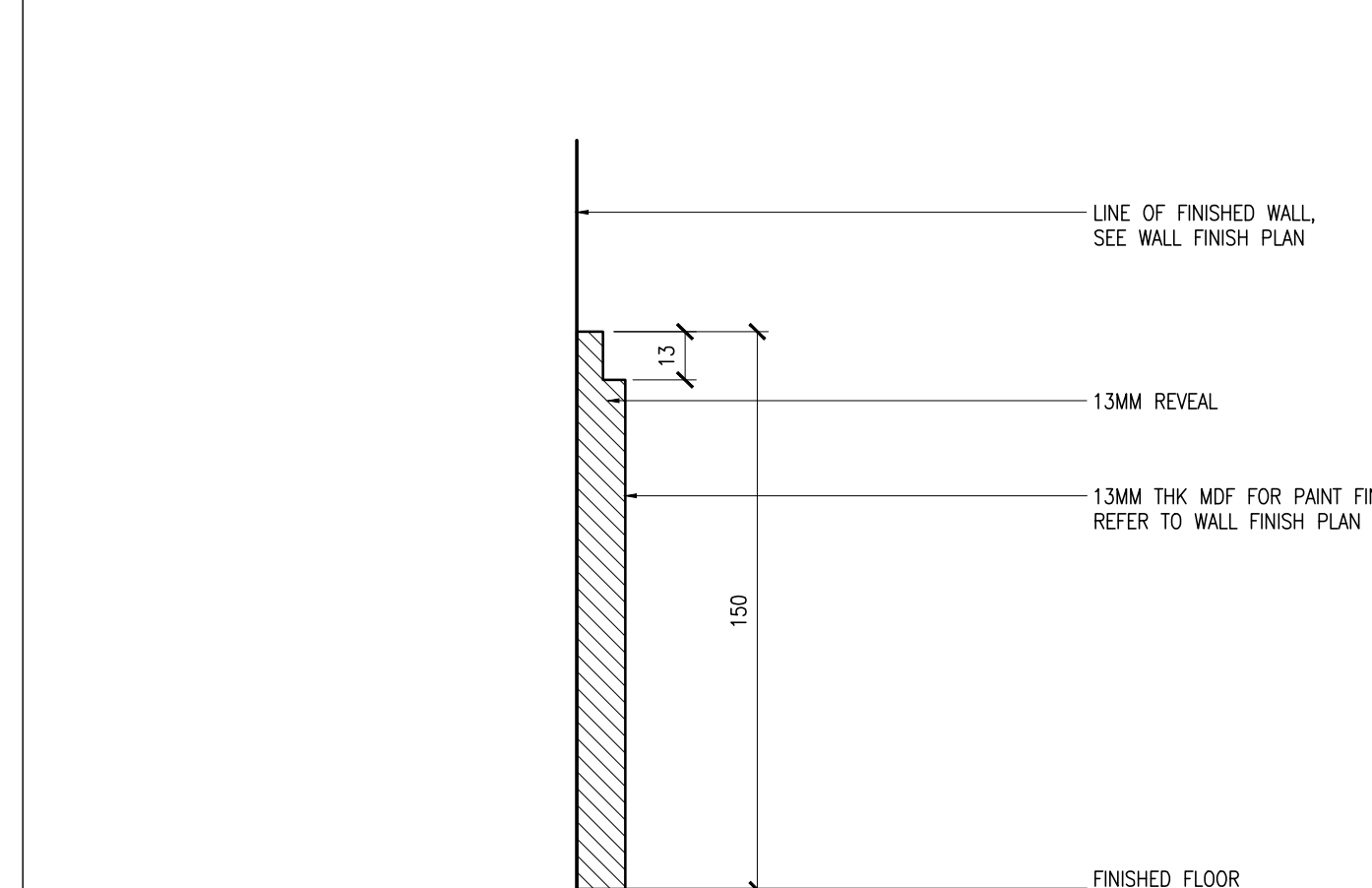
13 DETAIL - 150MM STONE BASE AT STONE PANELLING
 09.5 SCALE 1:2



14 DETAIL - 150MM STONE BASE AT WOOD PANELLING
 09.5 SCALE 1:2



15 DETAIL - 150MM STONE BASE AT MIRROR PANELLING
 09.5 SCALE 1:2



16 DETAIL - 150MM MDF BASE AT GWB
 09.5 SCALE 1:2

Hines TRIDEL

AQUAVISTA
 AT BAYSIDE TORONTO
 1 EDGEWATER DRIVE, TORONTO ONTARIO

I B Y DESIGN
 77 MOWAT AVENUE, SUITE 100
 TORONTO, ONTARIO M5K 3G3 - CANADA
 T + 416 531 2224
 12 DEBORCHES STREET
 NEW YORK, NEW YORK 10013 - USA
 T + 212 362 4952

Drawing Title:
TYPICAL BASE DETAILS

Our Project Number:
 14008
 Designed By: DMJ/KR, VVW/SJG
 Detailed By: DMJ/KR, VVW/SJG, BP
 Drawing Number:

ID9.5