








RETAIL SIGNAGE CONCEPT

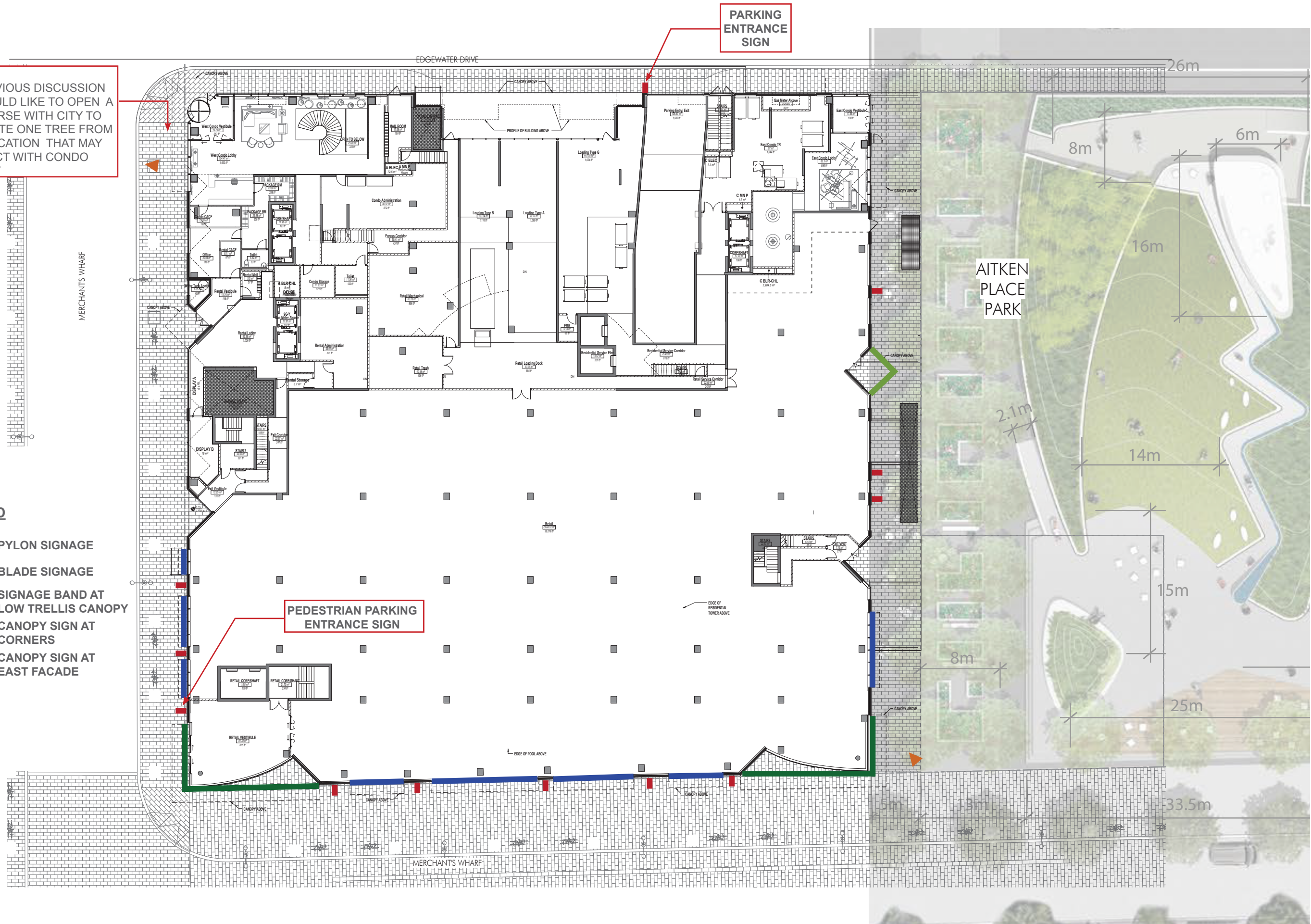
22 MAY 2015

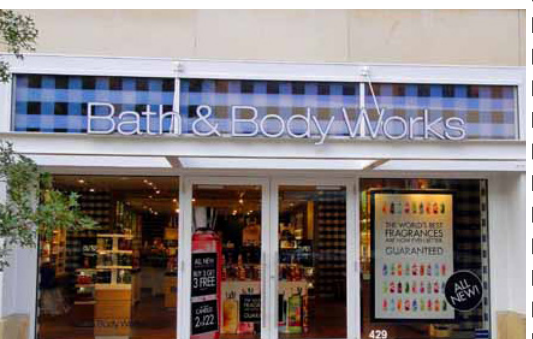
NOTE :
 AS PREVIOUS DISCUSSION
 WE WOULD LIKE TO OPEN A
 DISCOURSE WITH CITY TO
 RELOCATE ONE TREE FROM
 THIS LOCATION THAT MAY
 CONFLICT WITH CONDO
 CANOPY

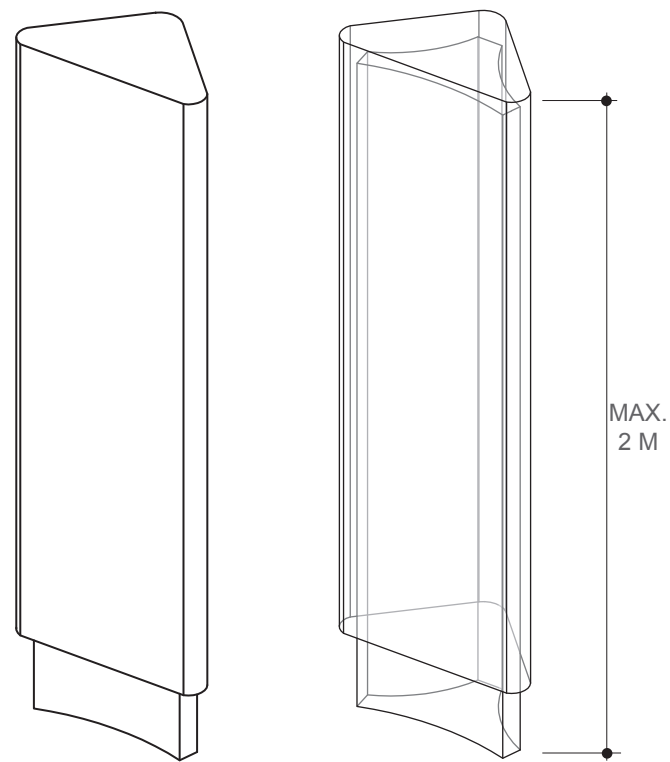
**PARKING
 ENTRANCE
 SIGN**

**PEDESTRIAN PARKING
 ENTRANCE SIGN**

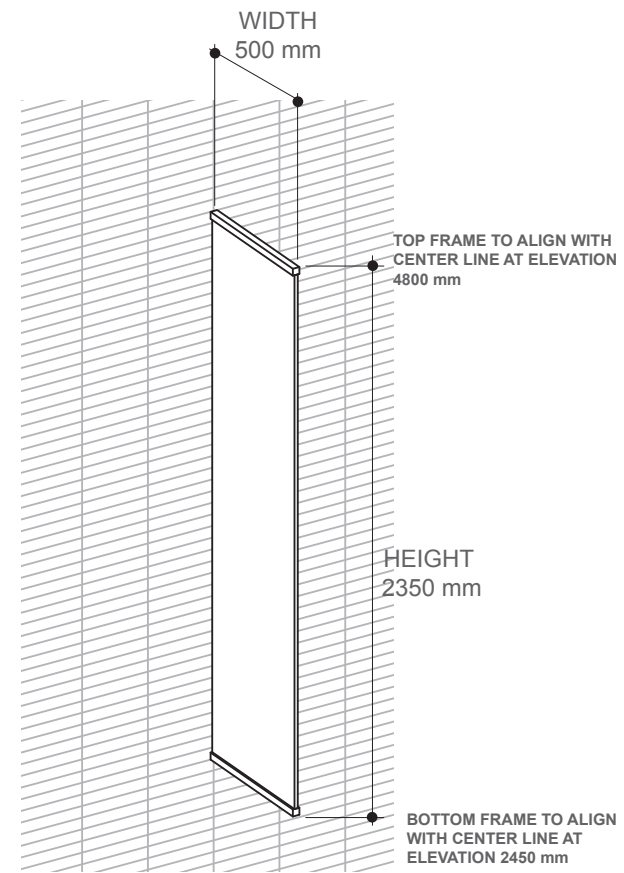
- LEGEND**
- ①  PYLON SIGNAGE
 - ②  BLADE SIGNAGE
 - ③  SIGNAGE BAND AT LOW TRELLIS CANOPY
 - ④  CANOPY SIGN AT CORNERS
 - ⑤  CANOPY SIGN AT EAST FACADE





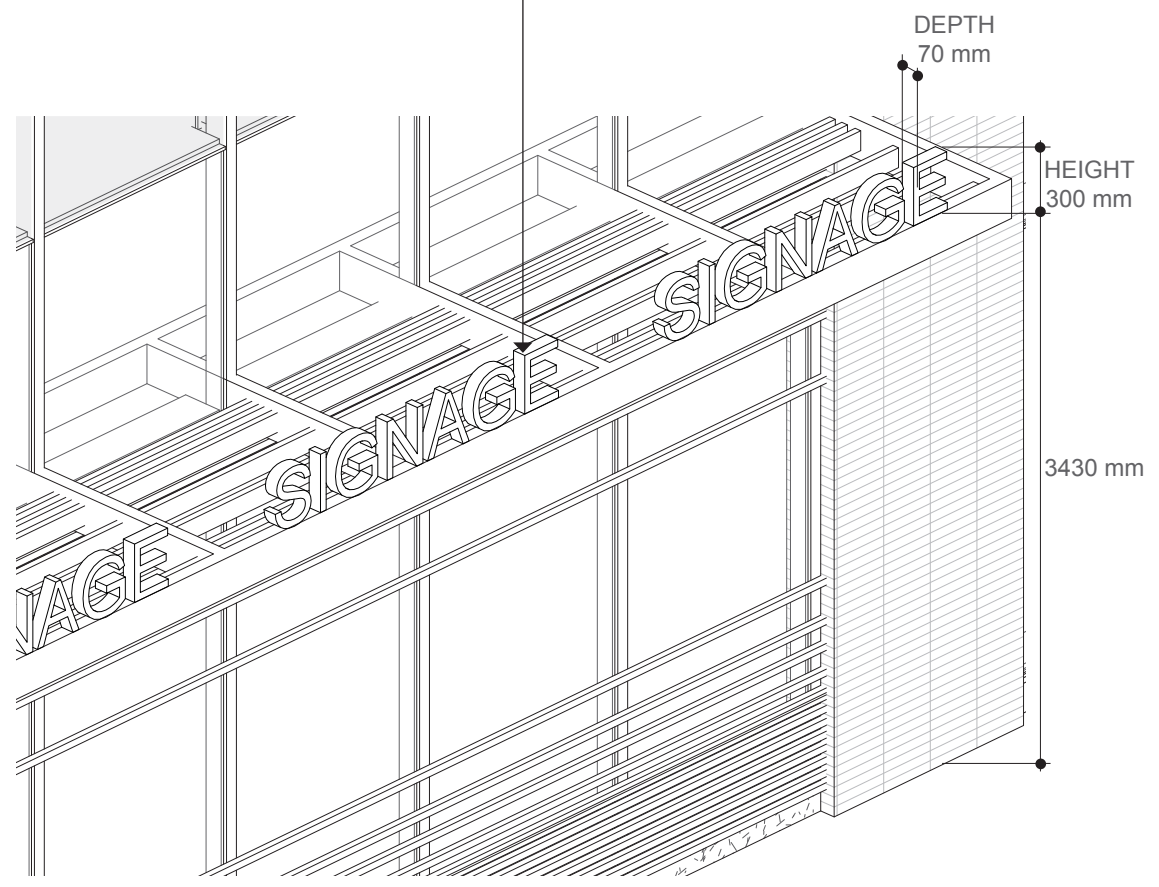


1 PYLON SIGNAGE



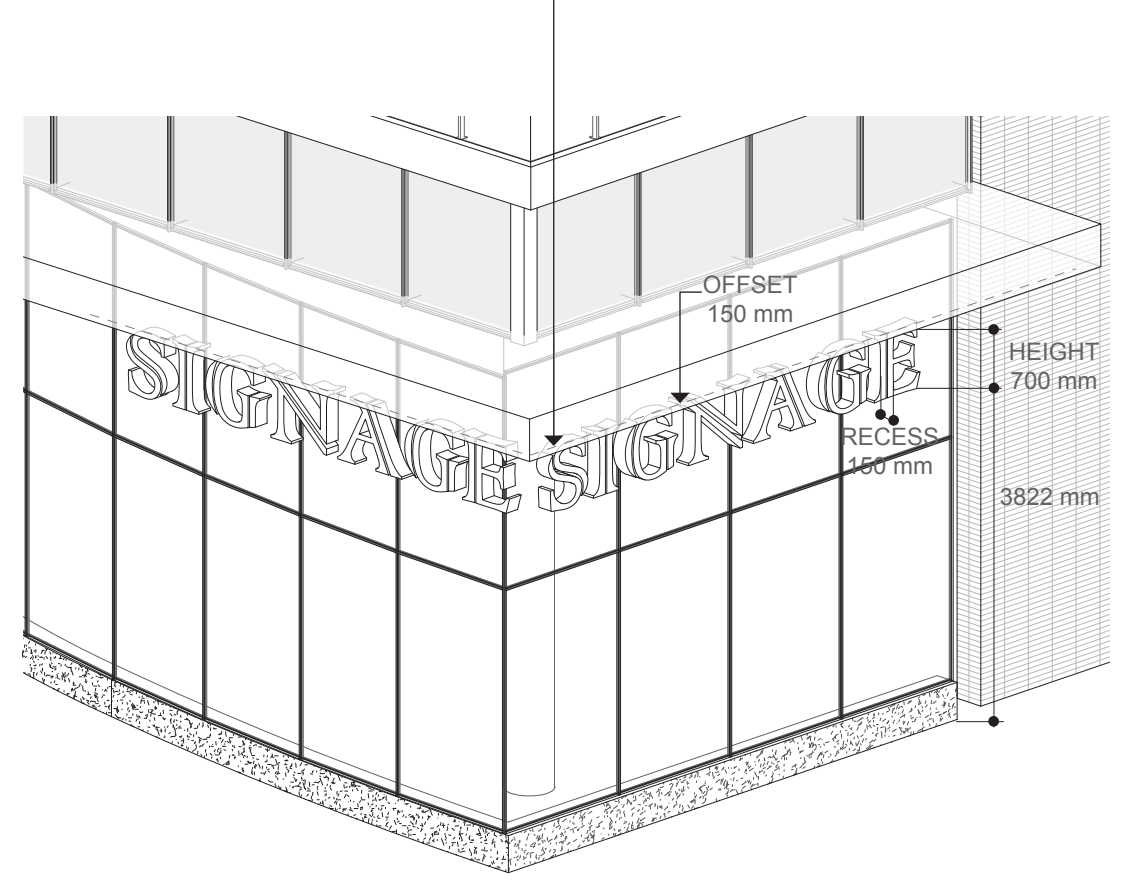
2 BLADE SIGNAGE (2450 mm ABOVE GRADE)

FRONT FACE OF SIGNAGE TO BE MOUNTED FLUSH WITH FACE OF CANOPY.
 BOTTOM EDGE OF FONT TO REST ON CANOPY.
 VISIBLE VERTICAL SUPPORT MEMBERS, IF REQUIRED, SHOULD BE REDUCE TO THE A MINIMUM AND NOT BE VISIBLY DISTRACTING FROM THE FACADE. ALL SIGNAGE TO BE CONSISTENT OUTLINED FONT STYLE (TBD) AND HEIGHT, LETTERS TO BE HEAVY GAUGE POWDER COATED ALUMINUM, FINISHED GRAY VELVET OUTSIDE AND STEEL CITY SILVER INSIDES.



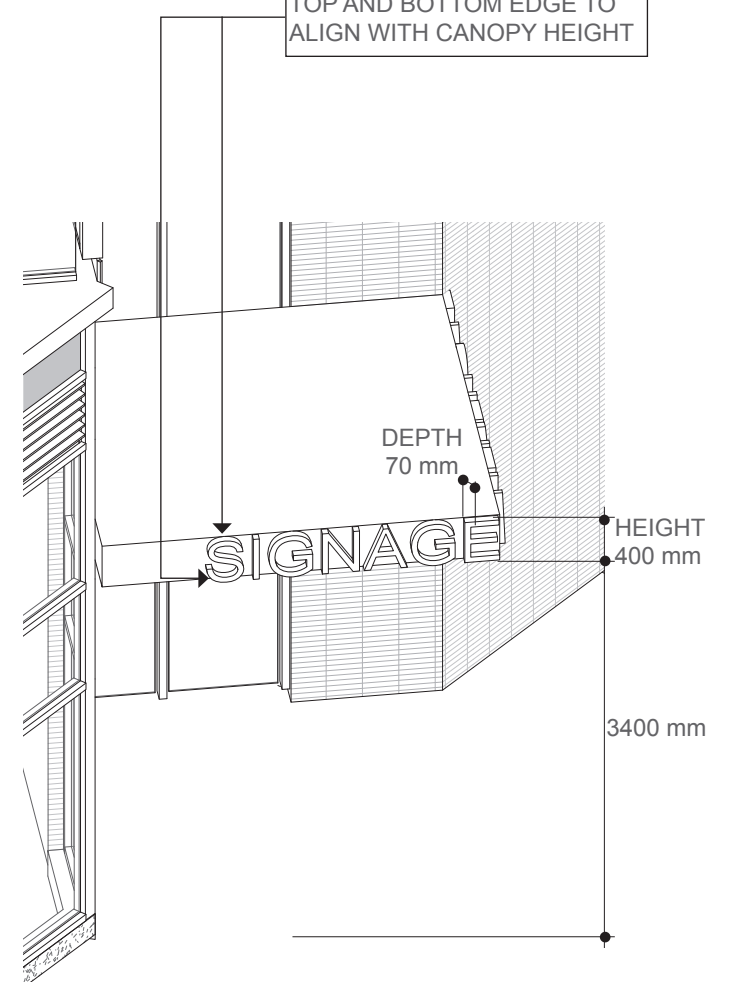
3 SIGNAGE BAND AT LOW TRELLIS CANOPY

FRONT FACE OF SIGN TO BE RECESSED 150MM FROM FACE OF CANOPY. SIGN TO BE MOUNTED TIGHT TO UNDERSIDE OF CANOPY. IF SIGN TYPE CONTAINS DETAIL ELEMENTS THAT "FLOAT UNDER THE CANOPY, THE ENTIRE SIGN SHOULD BE MOUNTED TO A GLASS PANEL RATHER THAN HAVE VISIBLE VERTICAL SUPPORT MEMBERS.



4 CANOPY SIGN AT CORNERS

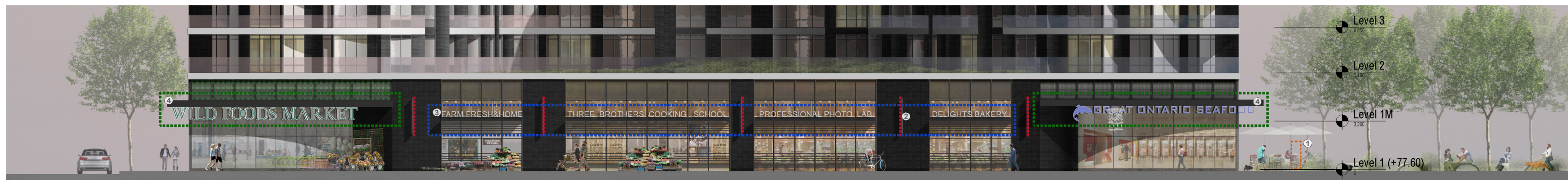
TOP AND BOTTOM EDGE TO ALIGN WITH CANOPY HEIGHT



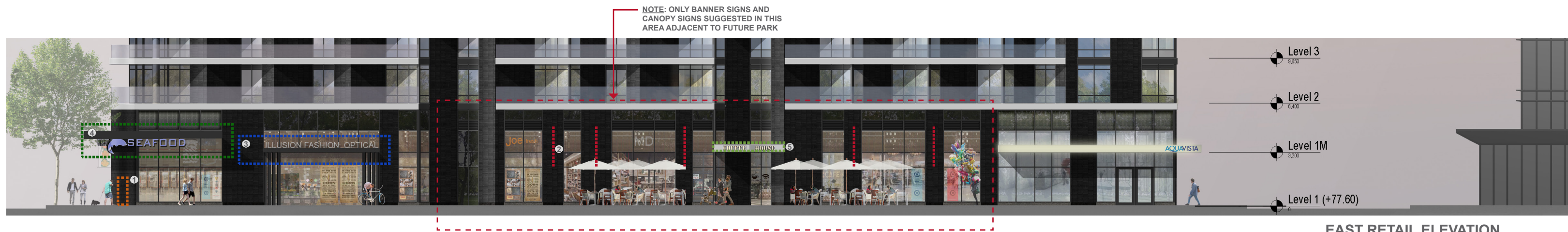
5 CANOPY SIGN AT EAST FACADE



WEST RETAIL ELEVATION



SOUTH RETAIL ELEVATION



EAST RETAIL ELEVATION



AQUAVISTA

1

AQUAVISTA

1001 WEST LOBBY
1002 WEST LOBBY
1003 WEST LOBBY
1004 WEST LOBBY
1005 WEST LOBBY







DARK PONY  **DARK PONY** 

5

DARK PONY

ESPRESSO BAR