

AQUAVISTA - ELECTRICAL PLAN

The Electrical Plan is a representation of a typical suite layout only. Its purpose is to show approximate electrical locations which are subject to change without notice as a result of the construction process and per the Agreement of Purchase and Sale.

All electrical items are placed at the Vendors discretion which is governed by Provincial and Municipal regulatory codes and in collaboration with professional consultants. Generally, ceiling light fixtures are placed to the approximate centre of the functional space of the room regardless of the bulkhead locations. Capped ceiling outlets, as an exception, are specifically dimensioned per below and may vary by approximately 6" in any direction of the specification due to structural limitations.

All Customers' requested Personal Selection revisions will be included in a Personal Selections Addendum and Schedule C floor plan which is formally approved by the Customer and Vendor and accepted for construction after payment. If an accepted Electrical Personal Selection requires notification or elimination as a result of the construction process than the Customer will be rebated the cost of the Selection requires notification or elimination as a result of the construction process than the Customer will be rebated the cost of the Personal Selection as outlined in detail in the Agreement of Purchase & Sale.

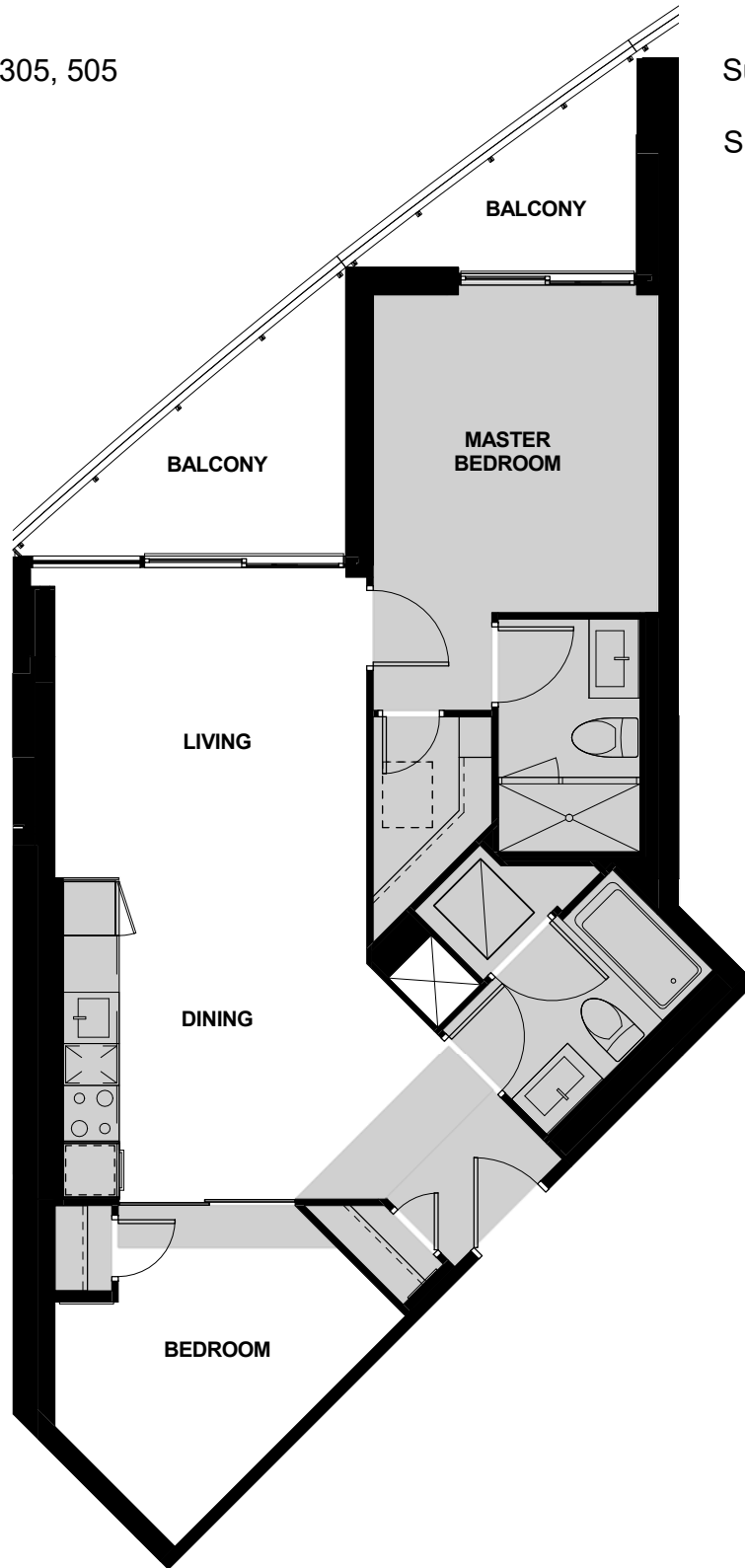
The Electrical Plan does not reflect and should not be used to demonstrate any changes to suite design made by the Customer or the Vendor.

Municipal Suite # 305, 505

Suite Type

2A

Suite #



Legend:

	ERV		Pot Light		ERV Switch		Switch Outlet		Weatherproof Receptacle		T-Slot duplex Receptacle		Key Pad		Track Light
	Suite Electrical Panel		Light Fixture		Capped Outlet		Duplex Receptacle		Duplex Receptacle with GFI (Ground Fault Interruptor)		Telephone Outlet		Multiport Outlet		Hose Bib
	Telecom Panel		Switch		Return Air		Wall Mount Light		Cable Outlet		Thermostat		Under Counter Lighting Connection		Capped Gas Line

All electrical symbols will be reviewed at the time of your electrical appointment however not all are represented in the legend above. Combination Smoke Alarm and CO Detector to be installed where applicable.

Area shaded in grey and /or hatched represents bulkheads and dropped ceiling for reference only. Location and size of bulkhead and dropped ceiling may vary and are subject to change.

Thermostat locations are approximate and are shown for reference.

Sprinkler system will be included in your suite as required by the Ontario Building Code. The location of sprinkler heads throughout the ceiling and/or bulkheads are determined by Professional Consultant. Please refer to sentence 6.7 in Schedule B of Agreement of Purchase and Sale.

Acknowledge that I have reviewed the above Electrical Plan, and understand that it is subject to change without notice. E. & O.E. June, 2016

I request changes to the electrical plan

Purchaser Name _____

I do not request changes to the electrical plan

Purchaser Signature _____ Date _____