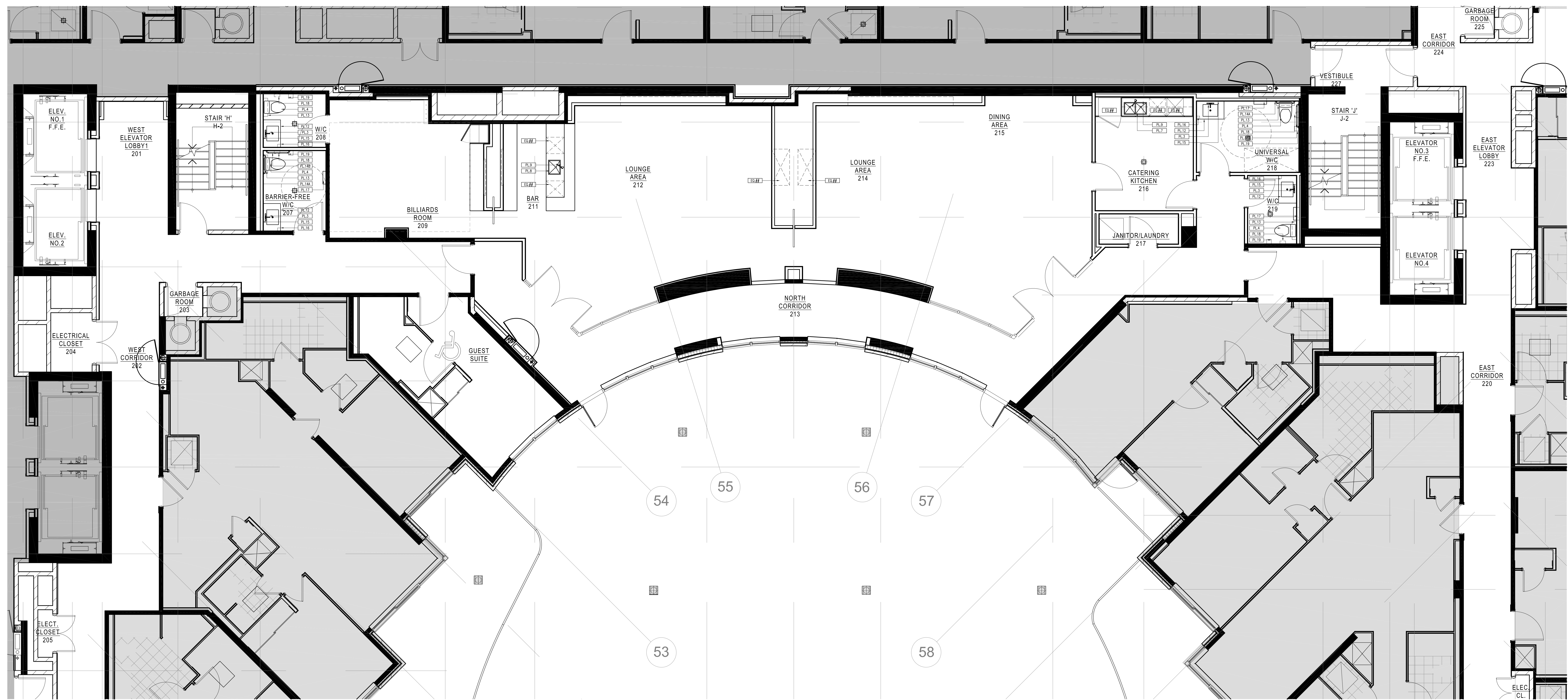


LEGEND : WALL TYPES	
SYMBOL	DESCRIPTION
[Symbol]	TYPICAL PARTITIONS
[Symbol]	EXISTING WALLS TO BE MADE GOOD WHERE REQUIRED.
[Symbol]	PARTITIONS TO BE 80mm METAL STUD @ 400mm O.C. W/ BRACING AS REQ'D C/W ONE LAYER OF 12mm GYPSUM WALLBOARD ONE OR BOTH SIDES AS REQ'D TO U/S. USING ALLOW 20mm OVERALL WALL THICKNESS WHERE REQUIRED TO ACCOMMODATE PLUMBING. CWB TO BE TAPE, FILLED, AND SANDED SMOOTH READY TO RECEIVE NEW FINISHES.
[Symbol]	SAME AS ABOVE - PLUS MIN. STC-50 SOUND BATTING TYPE REGULATION - TAPE, PASTE & SANDED, READY TO RECEIVE WALL FINISH.
[Symbol]	PARTITIONS TO BE 25mm METAL FLUING CHANNELS OR (STEEL STUD AS REQUIRED TO ACHIEVE DESIGN WIDTH) @ 400mm O.C. W/ BRACING AS REQ'D C/W ONE LAYER OF 12mm GYPSUM WALLBOARD ONE SIDE AS REQ'D TO U/S. CEILING, CWB TO BE TAPE, FILLED, AND SANDED SMOOTH READY TO RECEIVE NEW FINISHES.

LEGEND : DRAWING SYMBOLS	
SYMBOL	DESCRIPTION
[Symbol]	DETAIL NUMBER REFER TO 24" x 36" DETAILS
[Symbol]	DETAIL NUMBER REFER TO 11" x 17" DETAILS
[Symbol]	ELEVATION NUMBER FACE NUMBER REFER TO 24" x 36" ELEVATIONS
[Symbol]	EQUIPMENT CODE REFER TO 11" x 17" EQUIPMENT SPECIFICATIONS
[Symbol]	DOOR CODE REFER TO 11" x 17" DOOR SPECIFICATIONS

- PARTITION NOTES**
- THIS DRAWING IS TO BE READ IN CONJUNCTION WITH ARCHITECTURAL, MECHANICAL, ELECTRICAL, AND SPECIFICATIONS REPORT. DISCREPANCIES TO THE INTERIOR DESIGNER'S INTENT SHALL BE APPROVED BY THE INTERIOR DESIGNER.
 - CONTRACTOR IS RESPONSIBLE FOR FIELD MEASUREMENTS AND DIMENSIONS. REPORT DISCREPANCIES TO THE DESIGNER FOR CLARIFICATION.
 - WORK TO BE CARRIED OUT ACCORDING TO RELEVANT CODES, STANDARDS AND AS PER SPECIFICATIONS ISSUED BY THE DESIGNER.
 - CONTRACTOR MUST OBTAIN CONSTRUCTION PERMITS REQUIRED BY RELEVANT AUTHORITIES BEFORE THE COMMENCEMENT OF WORK.
 - DIMENSIONS ARE TAKEN FROM FACE OF FINISHED PARTITION TO FACE OF FINISHED PARTITION UNLESS OTHERWISE NOTED.
 - DIMENSIONS TAKEN FROM THE CORE, COLLARS OR CONVECTORS ARE TAKEN FROM THE FACE OF THAT ARCHITECTURAL ELEMENT TO THE CENTRE OF THE PARTITION.
 - NEW PARTITIONS TO BE FIXED DIRECTLY TO CLEAN CONCRETE SLAB PARTITIONS TO BE TAPE, SANDED SMOOTH AND MADE READY TO RECEIVE FINISHES.
 - DRYWALL PARTITION EDGES TO BE SMOOTH AND PLUMB LINE TRUE.
 - CONTRACTOR TO ENSURE WALLING PARTITION THICKNESS TO COORDINATE WITH DOOR FRAME SIZE. REPORT DISCREPANCIES TO THE DESIGNER FOR CLARIFICATION.
 - CONTRACTOR TO ENSURE SUFFICIENT BLOTTING IS PROVIDED IN AREAS REQUIRING SUPPORT OF THE PARTITION OR CEILING FOR MOUNTED EQUIPMENT OR MATERIALS.
 - CONTRACTOR TO ENSURE FLOOR IS LEVEL PRIOR TO CONSTRUCTION OF PARTITIONS. PROVIDE SINK COAT IF NECESSARY. FINISHES NOT TO EXCEED 1/4" IN AREAS WHERE FINISH CABINETS OR SHELVING UNITS ARE TO BE LOCATED. REFER TO FURNITURE PLAN FOR CABINET LAYOUTS.
 - CONTRACTOR TO REPAIR DAMAGE TO EXISTING FIRE SEPARATION WITHIN THE AREA SCOPE OF WORK.
 - CONTRACTOR TO REFER TO MECHANICAL DRAWINGS TO ENSURE PROVISION FOR AIR TRANSFER OPENINGS ABOVE CEILING PARTITION CONSTRUCTION.
 - CONTRACTOR TO ENSURE ACOUSTICAL CAULKING IS PROVIDED AT PARTITION CONNECTIONS TO COLLARS, CORE, FINISHED CEILING, FLOOR SLAB AND U/S OF STRUCTURE.
 - MATERIALS USED SHALL BE NEW UNLESS OTHERWISE NOTED.
 - LOCATIONS WHERE BASE BUILDING PARTITIONS OR COLLARS ARE TO RECEIVE ELECTRICAL CONDUIT AND BOXES. DRIPWALL CONTRACTOR IS RESPONSIBLE FOR FINISHING, CUTTING, PATCHING AND FINISHING AS PER SPECIFICATIONS AT COMPLETION OF ELECTRICAL WORK.
 - REFER TO ARCHITECT'S PERMIT DRAWINGS FOR ALL PARTITION TYPES, PARTITION LOCATIONS AND DOOR SCHEDULE.

- Notes:**
- CONTRACTOR AND ALL SUB-TRADES SHALL VERIFY ALL SITE DIMENSIONS. ALL DRAWINGS, DETAILS AND SPECIFICATIONS TO BE APPROVED BY THE INTERIOR DESIGNER IN WRITING FOR APPROVAL BEFORE PROCEEDING WITH THE WORK.
 - CONTRACTOR AND SUB-CONTRACTORS, BEFORE PROCEEDING WITH WORK, MUST SUBMIT ALL NECESSARY SAMPLES FOR APPROVAL OF QUALITY AND FINISH TO THE INTERIOR DESIGNER.
 - CONTRACTOR MUST COMPLY WITH THE CONTRACT DOCUMENTS, PERFORMANCE REQUIREMENTS, APPLICABLE CODES AND REGULATIONS.
 - ALL DRAWINGS AND WRITTEN MATERIAL HEREIN CONSTITUTES THE ORIGINAL AND UNPUBLISHED WORK OF "8 BY 4 DESIGN ASSOCIATES INC." AND MAY NOT BE DUPLICATED, USED OR DISCLOSED WITHOUT PRIOR WRITTEN CONSENT OF "8 BY 4 DESIGN ASSOCIATES INC."
 - DRAWINGS NOT TO BE SCALED.
- Issue:**
- | | |
|-------------------------------|----------|
| 01 ISSUED FOR COORDINATION | 15.04.09 |
| 02 ISSUED FOR COORDINATION | 15.04.13 |
| 03 ISSUED FOR PLUMBING TENDER | 15.10.28 |
| 04 ISSUED FOR COORDINATION | 15.11.11 |



1 CONSTRUCTION PLAN
SCALE 1:150

Hines TRIDEL

AQUAVISTA
AT BAYSIDÉ TORONTO
1 EDGEWATER DRIVE, TORONTO ONTARIO

8 BY 4
DESIGN

LEVEL 2
CONSTRUCTION PLAN

Our Project Number: 1400B
Designed By: DMJ/KR, VYW
Checked By: DMJ/KR, VYW
Drawing Number:

ID2.8A