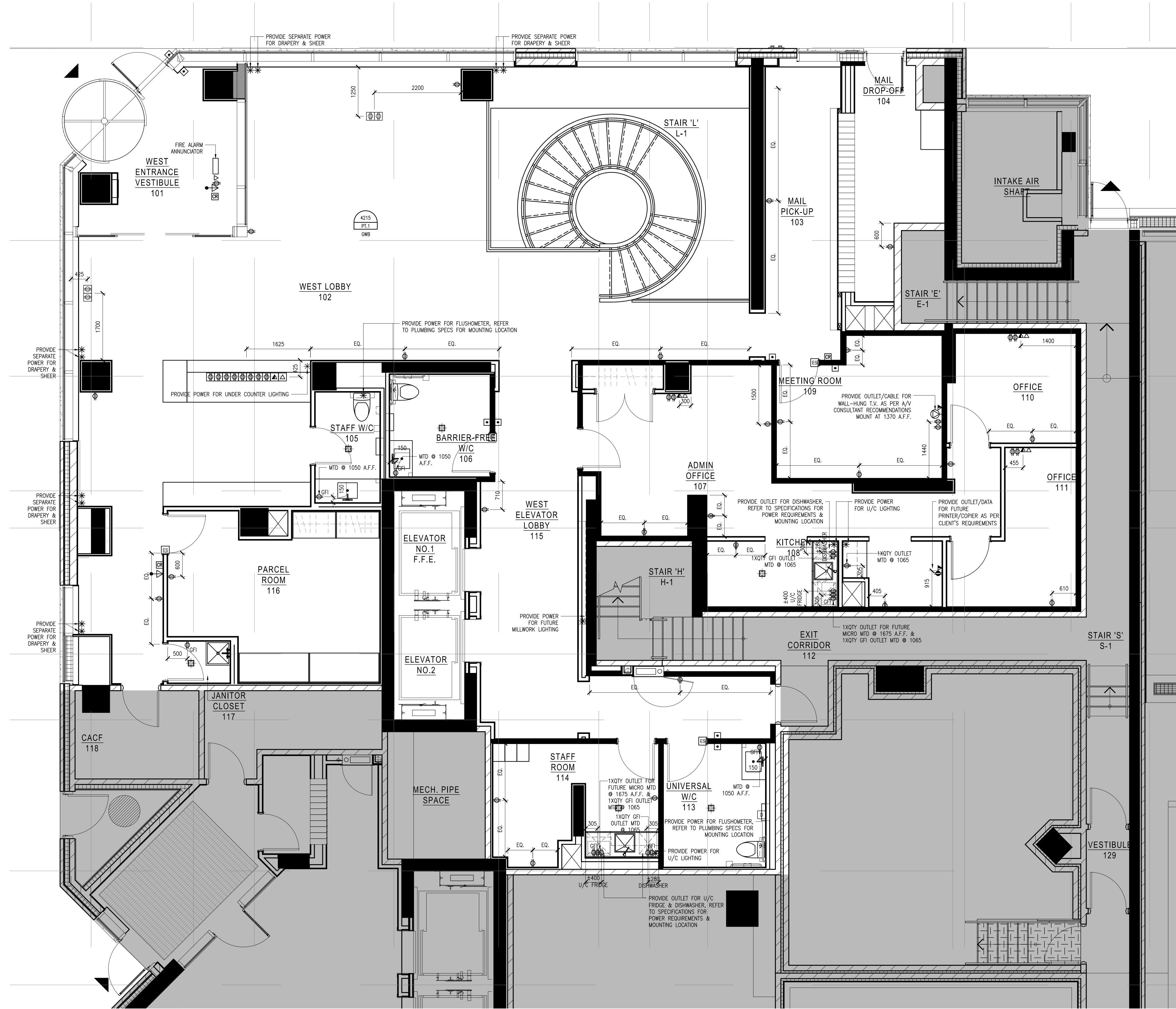


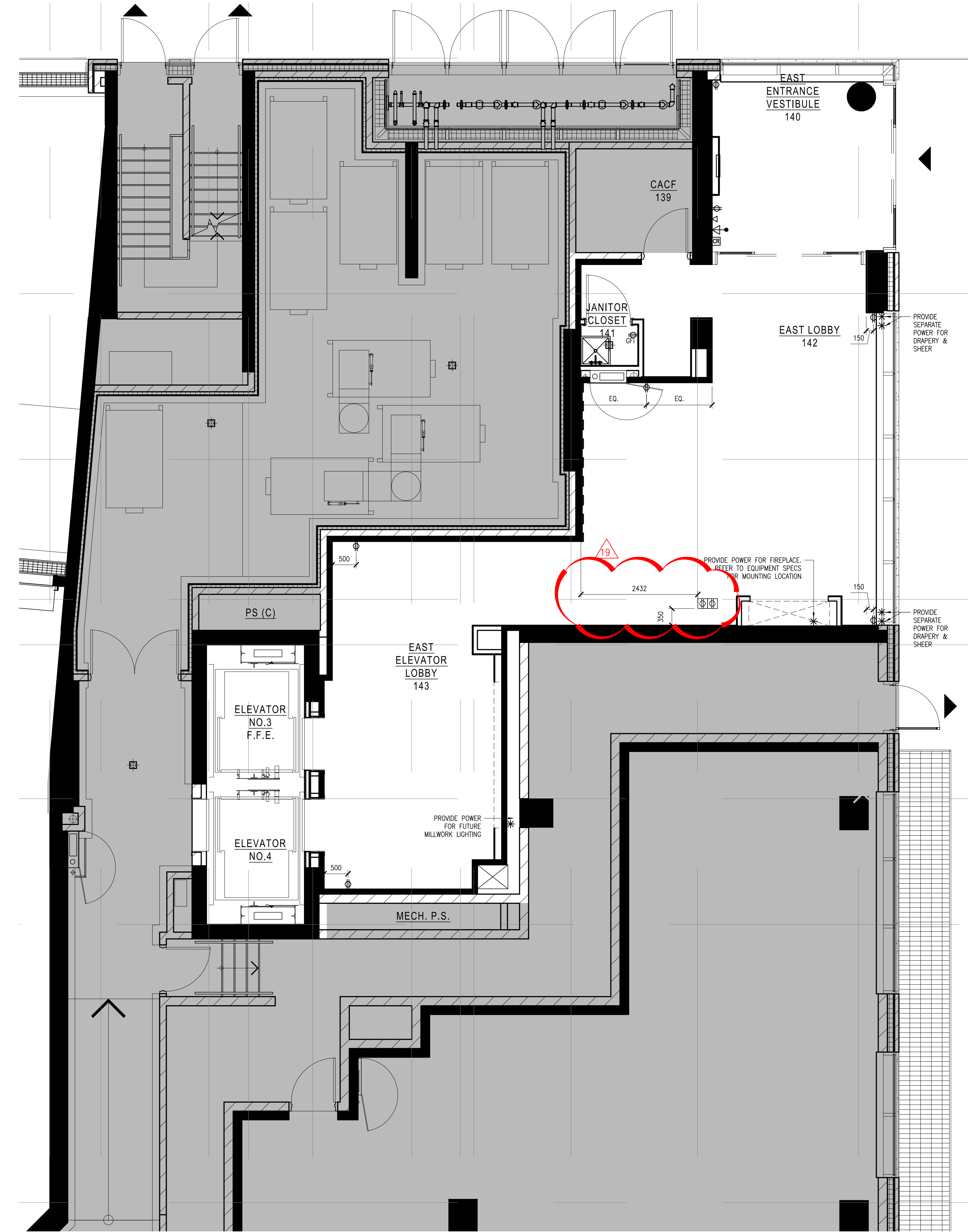
LEGEND : POWER		
SYMBOL	DESCRIPTION	QTY
⊕	120 VOLTS DUPLEX OUTLET TO BE WALL MOUNTED @ 12" A.F.F. O.C. UNLESS OTHERWISE NOTED	-
⊕ GF1	120 VOLTS DUPLEX OUTLET W/ GROUND FAULT INTERRUPTER TO BE WALL MOUNTED @ 12" A.F.F. O.C. UNLESS OTHERWISE NOTED	-
▲	TELEPHONE OUTLET TO BE WALL MOUNTED AS NOTED O.C. (CAT3 VOICES)	-
△	DATA OUTLET TO BE WALL MOUNTED (CAT5 DATA)	-
▲	VOICE/DATA OUTLET TO BE WALL MOUNTED	-
⊕	DEDICATED OUTLET FOR COMPUTER TO BE WALL MOUNTED @ 12" A.F.F. O.C. UNLESS OTHERWISE NOTED	-
⊕	FLOOR MOUNTED DEDICATED OUTLET @ CASH AREA FOR COMPUTER	-
⊕	FLOOR MOUNTED DUPLEX OUTLET	-
▲	FLOOR MOUNTED TELEPHONE OUTLET @ CASH AREA (CAT3 VOICES)	-
▲	FLOOR MOUNTED DATA OUTLET @ CASH AREA (CAT5 DATA)	-
▲	FLOOR MOUNTED VOICE/DATA OUTLET	-
*	POWER REQUIRED	-
⊕	SPEAKER - WIRE TO OFFICE STEREO UNIT	-
⊕	EXISTING DUPLEX OUTLETS AND POWER TO REMAIN	-
⊕	CABLE TELEVISION OUTLET	-
⊕	AUTOMATIC DOOR OPERATOR PUSH PLATE/BUTTON MOUNTED AT 1000mm	-
⊕	CARD READER	-
⊕	INTERCOM MOUNTED AT AT 1050mm	-
⊕	ELECTRIC STRIKE	-
⊕	DURESS ALERT PUSH PLATE/BUTTON MOUNTED AT 1050mm	-
⊕	KEYPAD MOUNTED MOUNTED AT 1050mm	-

- POWER AND COMMUNICATION NOTES**
- POWER AND COMMUNICATION DRAWINGS TO BE USED FOR LOCATION PURPOSES ONLY. REFER TO ELECTRICAL ENGINEERING DRAWINGS FOR DETAILS, SPECIFICATIONS AND REQUIREMENTS.
  - ELECTRICAL AND COMMUNICATION WORK TO COMPLY WITH THE REQUIREMENTS OF THE BUILDING LANSARD AND AUTHORITIES HAVING JURISDICTION.
  - CONTRACTOR TO REPORT DISCREPANCIES BETWEEN ENGINEERING AND DESIGN DRAWINGS TO THE DESIGNER AND ELECTRICAL ENGINEER PRIOR TO COMMENCEMENT OF WORK.
  - SUBMIT REQUIRED CHANGES TO THE DESIGNER FOR APPROVAL PRIOR TO COMMENCEMENT OF WORK.
  - DIMENSIONS OF SERVICES ARE TAKEN AT THE CENTRE OF THE SERVICE OR GROUP OF SERVICES, UNLESS OTHERWISE NOTED.
  - DIMENSIONS FROM A PARTITION ARE TAKEN FROM FACE OF PARTITION TO CENTRE OF THE SERVICE OR GROUP OF SERVICES, UNLESS OTHERWISE NOTED.
  - DIMENSIONS FROM THE PERIMETER OF THE BUILDING ARE TAKEN FROM FACE OF THE CONCRETE OR BRICK BUILDING ELEMENT TO CENTRE OF THE SERVICE OR GROUP OF SERVICES, UNLESS OTHERWISE NOTED.
  - REFER TO ENGINEERING DRAWINGS FOR SPECIFICATION OF COVER PLATE, RECEPTACLE TYPE AND COLOUR. REFER TO DESIGNER DRAWINGS FOR MOUNTING HEIGHT.
  - WHERE POWER AND COMMUNICATION SERVICES ARE ADJACENT ON PLAN, GANGED COVER PLATES SHALL BE USED.
  - CONTRACTOR TO ENSURE THAT TRACES HAVE COMPLETED THEIR PORTION OF THE WORK BEFORE BOARDING UP BOTH SIDES OF THE STUDS. THIS IS TO INCLUDE INSPECTIONS AS REQUIRED BY LOCAL AND PROVINCIAL BY-LAW AND BUILDING CODES.
  - SOUND BATTIS IN PARTITIONS ARE TO CONTINUE BEHIND POWER AND TELEPHONE OUTLETS WITHOUT INTERRUPTION.
  - STAGGER OUTLETS OCCURRING ON OPPOSITE SIDES OF THE SAME PARTITION TO MAINTAIN ACOUSTIC INTEGRITY.
  - FURNITURE SYSTEM FEEDS TO BE SUPPLIED BY SYSTEM FURNITURE MANUFACTURER AND ELECTRICAL CONNECTION OF SYSTEMS FURNITURE BY ELECTRICAL CONTRACTOR.
  - CONTRACTOR TO SUPPLY METAL CONDUIT AND KEYSH BUSHES ACCESS CONTROL EQUIPMENT INCLUDING THE SUPPLY AND INSTALLATION OF BOXES, CONDUITS, WIRING AND CABLES AS PER SECURITY CONSULTANT'S SPECIFICATIONS AND DETAILS.
  - TYPICAL WALL OUTLETS TO BE MOUNTED AT 12" A.F.F.
  - REFER TO MECHANICAL & ELECTRICAL ENGINEER'S DRAWINGS FOR SPECIFICATIONS.
  - ALL POWER SHOWN ON THIS PLAN TO BE COORDINATED AND APPROVED BY CLIENT PRIOR TO INSTALLATION AND FABRICATION OF ANY MILLWORK WITH POWER REQUIREMENTS.
  - CONTRACTOR SHALL CONFIRM ALL QUANTITIES PRIOR TO ORDERING.
  - CONTRACTOR IS RESPONSIBLE FOR:
    - DISCONNECTING ALL LIGHTING, COMPUTERS, DATA LINES, PHONE LINES, ELECTRICAL FITTINGS, ETC.
    - REMOVAL AND RELOCATION OF EXISTING ELECTRICAL AS REQUIRED.
    - REWORKING ALL EXISTING TLM WIRE STRUCTURE UNDER EXISTING FLOORCOVERING IF REQUIRED.
  - CLIENT IS RESPONSIBLE FOR ALL POS AND DEBT WIRING.
  - THE ELECTRICAL CONTRACTOR MUST USE THE SIZE AND SDG TAVE OFF ON QUANTITY AND MATERIALS REQUIRED BEFORE STARTING PROJECT. ALL EXISTING LAYOUTS AND ELECTRICAL HUBS ARE TO BE CONFIRMED ON SITE AND DESIGNER NOTIFIED IF THERE ARE ANY DISCREPANCIES.

- Notes:**
- CONTRACTOR AND ALL SUB-TRADES SHALL VERIFY ALL SITE DIMENSIONS. ALL DRAWINGS, DETAILS AND SPECIFICATIONS TO BE USED FOR LOCATION PURPOSES ONLY. REFER TO ELECTRICAL ENGINEERING DRAWINGS FOR DETAILS, SPECIFICATIONS AND REQUIREMENTS.
  - CONTRACTOR AND SUB-CONTRACTORS, BEFORE PROCEEDING WITH WORK, MUST SUBMIT ALL NECESSARY SAMPLES FOR APPROVAL OF QUALITY AND FINISH TO THE INTERIOR DESIGNER.
  - CONTRACTOR MUST COMPLY WITH THE CONTRACT DOCUMENTS, PERFORMANCE REQUIREMENTS, APPLICABLE CODES AND REGULATIONS.
  - ALL DRAWINGS AND WRITTEN MATERIAL HEREIN CONSTITUTE THE ORIGINAL AND UNPUBLISHED WORK OF "IBBY DESIGN ASSOCIATES INC." AND MAY NOT BE DUPLICATED, USED OR DISCLOSED WITHOUT PRIOR WRITTEN CONSENT OF "IBBY DESIGN ASSOCIATES INC."
  - DRAWINGS NOT TO BE SCALED
- Issue:**
- |                             |          |
|-----------------------------|----------|
| 05 ISSUED FOR COORDINATION  | 16.01.11 |
| 06 ISSUED FOR CLIENT REVIEW | 16.01.15 |
| 07 ISSUED FOR TENDER        | 16.03.18 |
| 08 ISSUED FOR ADDENDUM      | 17.01.27 |
| 10 ISSUED FOR CONSTRUCTION  | 17.06.19 |
| 19 SITE INSTRUCTION #09     | 18.07.05 |



1 POWER AND COMMUNICATION PLAN  
SCALE: 1:150



2 POWER AND COMMUNICATION PLAN  
SCALE: 1:150

Hines TRIDEL

AQUAVISTA  
AT BAYSIDE TORONTO  
1 EDgewater Drive, Toronto Ontario

IBBY DESIGN  
77 MOWAT AVENUE, SUITE 100  
TORONTO, ONTARIO M5K 3G3 - CANADA  
T + 1 416 531 2224  
12 DEBROSS STREET  
NEW YORK, NEW YORK 10013 - USA  
T + 1 212 392 4952

Drawing Title:  
**LEVEL 1  
POWER AND  
COMMUNICATION PLAN**

Our Project Number:  
14008  
Designed By:  
DMJ/R, VV/SJ  
Drawing Number:  
DMJ/R, VV/SJ, BP

ID4.6