

TopBrewer[®] PRO

Video
Complete Walkthrough



Pre-Installation guide



Scanomat
Download Center



Scanomat
Connection Diagram



Scanomat
Architect Pack
(2D/3D Files)



For TopBrewer Pro
Version: 3.0
01-09-16

CONTENTS

- » Introduction 3
- » Installation Requirements 4
- » Space requirements 5

CARPENTER 6

- » Cutout overview 7
- » Examples of other configuration 8
- » Cut out sheet 9

VENTILATION 10

- » Ventilation requirements 11

ELECTRICAL 12

- » Electrical Requirements 13

PLUMBING 14

- » Plumbing option 1 15
- » Plumbing option 2 16

APPENDIX 17

Introduction

The operation of a TopBrewer Pro coffee system.

The TopBrewer Pro consists of a main unit, the coffee machine, the "swan neck" or tap that is installed through the tabletop and is height adjustable through the mounting bracket, a drained drip tray and a ventilation kit for the toe kick base. Additionally we offer optional accessories that are installed along side of the TopBrewer. These accessories include our extensive lineup of fridges, coolers and racks (overview on next page) that expands the machines capabilities to include milk, chocolate and ice water.

The TopBrewer is connected to the cold water supply and water is heated in professional flashheaters, meaning on demand. This works by water flowing through two 2,3kW aluminum coils when a drinks is ordered (approx. 84-92o) and a separate steam-coil producing steam for milk (138-140o). The total heating capacity of the TopBrewer is thus 6,9 kW and it should be preferably connected to 400V, 3 phase, 16 amp (3-phase version) or 208-240V, single phase, 30 amp (single phase version) for the machine to perform to it's full potential. If only 208-240V, single phase, 10 amps is available, the machine can be re-programmed to run on a priority heating diverting power to the heating source needing it the most.

When ordering a milk drink, milk is pumped from the fridge (the pump is placed inside the fridge for sanitary reasons), and once a delivery is done the machine finishes with pushing the remaining milk out with cold water and thus cleaning the entire tubing. The water does not enter the cup but is afterwards ejected into the drain via the double-valve inside the fridge.

All water shall be purified using TopBrewer certified filtration. We require that the main inlet is filtered through a filter using 30% bypass or less and that a second filter with 0% bypass is used to completely remove line from the dedicated steamer inlet.

Installation, maintenance and warranty

The TopBrewer system can be installed in almost any location provided there is sufficient space for the machine as well as power, water supply and waste.

The TopBrewer must be placed with sufficient clearance so that it may slide out on its hinges. The fridge must be fitted so that the length of the tubes does not exceed 1,5 mm . It can be installed in an adjacent cabinet provided it maintains such maximum length. Accessories such as the Scanomat Cooler 45l and the Chocolate rack must also stay within the same maximum distances to ensure proper dispense quality.

All equipment must be fitted so that the they receive proper ventilation, with temperatures not exceeding 35°C, as this would harm components and void warranty.



Installation Requirements

Video

Installation Walkthrough



TB ●



A1 ●



A2 ●



A3 ●



A4 ●



B1 ●



B2 ●



C1 ●



C2 ●

● Machine

● Fridges

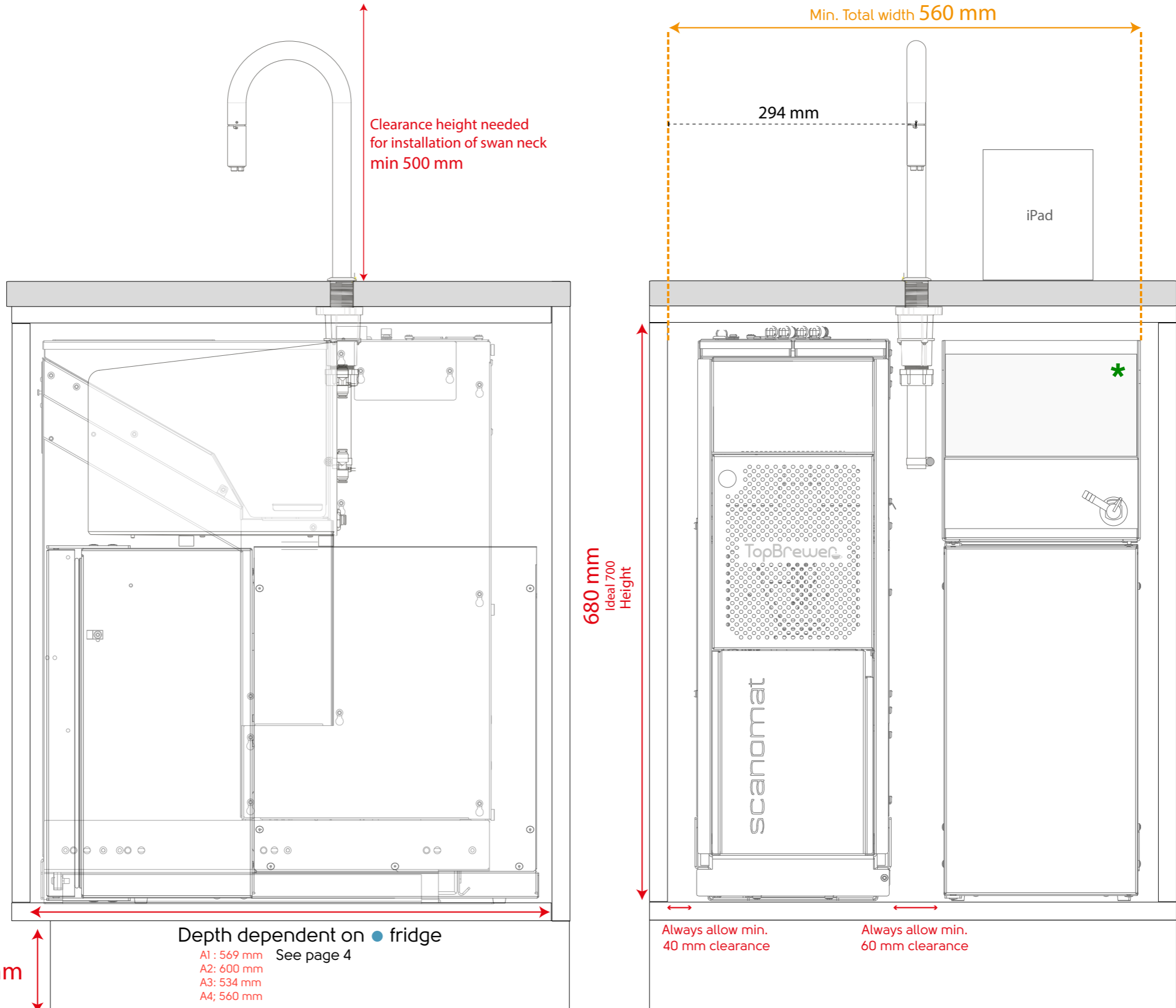
● Water coolers

● Racks

* OPTIONALLY WITH CO₂

UNIT DETAILS	TopBrewer Pro TB	ICE-Bank* A1	Pro-fridge A2	Pro-fridge Tall A3	Cooler 45* B1	Cooler 65* B2	Pro-Fridge BiB A4	Slimrack C1	Chocolate rack C2
Installation Dimensions (WxDxH)	224 x 534 x 667 mm	236 x 569 x 428.5 mm	231 x 600 x 430 mm	231 x 438 x 600 mm	255 x 486 x 404 mm	351 x 454 x 513 mm	520 x 560 x 760 mm	129 x 428 x 476,5 mm	230 x 323 x 237 mm
Packing Dimensions (WxDxH)	320 x 660 x 790 mm	246 x 579 x 488.5 mm	300 x 615 x 490 mm	241 x 443 x 660 mm	265 x 483 x 464 mm	361 x 469 x 573 mm	530 x 575 x 820 mm	139 x 443 x 536,5 mm	240 x 338 x 297 mm
Weight, gross.	60 kg	25 kg	20 kg	20 kg	22 kg	33 kg	31 kg	9 kg	8 kg
Weight, net.	56 kg	22 kg	17 kg	17 kg	19 kg	30 kg	28 kg	6 kg	5 kg
Bean/Carton Capacity	2 x 1.4 kg	Up to 4 l.	Up to 8 l.	Up to 8 l.	-	-	3x 10 l. Bag-in-box (up to)	10 l. Bag-in-box	3 l. Bag-in-box
Throughput/hour	180 cups	25 L	-	-	45L	65-180L	-	-	-
Approvals	CE, ETL/UL, CB, NSF	CE	CE, ETL/UL	CE, ETL/UL	CE, ETL/UL, NSF	CE	CE, ETL/UL	CE	CE
REQUIREMENTS	TopBrewer Pro TB	ICE-Bank A1	Pro-fridge A2	Pro-fridge Tall A3	Cooler 35 B1	Cooler 45 B2	NFC A4	Multirack C1	Chocolate rack C2
Power	6900 Watt 208-240V, 30 Amp, single phase OR 400V, 3 phase 16 Amp 2300 Watt (Priority Heating) 208-240V, 10 Amp, single phase For Canada & US: L6-30 twist lock plug (supply male/female connections) For UK: 32 Amp - Commando fitting (supply male/female connections)	208-240V, 13 Amp 3-pin plug point for each unit. For Canada & US: 115V, 60 Hz, 10 Amp, plug point for each unit.						24V DC from TopBrewer	24V DC from TopBrewer
Water	Direct Water Connection, 3/4" type shutoff valve Water pressure: 200kPa (2 Bar) - 600 kPa (6 Bar)	-	-	-	Direct Water Connection, 3/4" type shutoff valve Water pressure: 200kPa (2 Bar) - 600 kPa (6 Bar)	-	-	-	-
Filtration	TopBrewer water filters fitted in a location adjacent to the TopBrewer. (pages 7 + 8) Dedicated steam filter required (Pure 50, 0% bypass)	TopBrewer ActiveCoal 10.000, optional, purifies the water with active coal technology and	-	-	TopBrewer ActiveCoal 10.000, optional, purifies the water with active coal technology and can be fitted to remove unwanted odors, impurities etc	-	-	-	-
Drainage	Waste U-pipe, ø40mm. Manifold/drain plug (included, see pages 15 + 16) is inserted and components are connected here.								
Ventilation	Machine and fridge produces heat, which needs to be able to exit as per installation instructions. See carpenter requirements (pages 7 + 8) and ventilation specs (page 11)							-	-

Space requirements



*Optional units

CARPENTER


Video
Carpenter Walkthrough



Examples of other configuration:

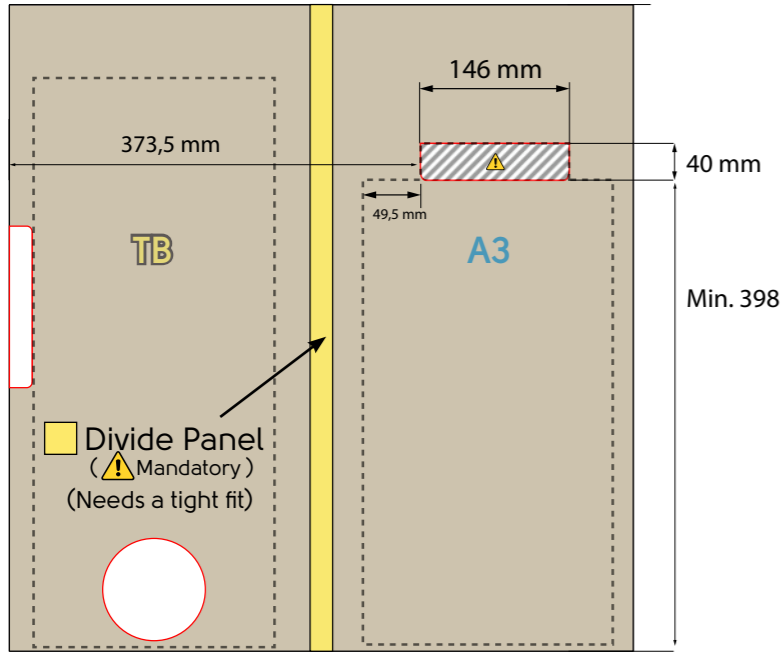
All cabinets are based on standard 60 cm cabinets

 Air exhaust for heat from Fridge/Cooler
See page 11 for details

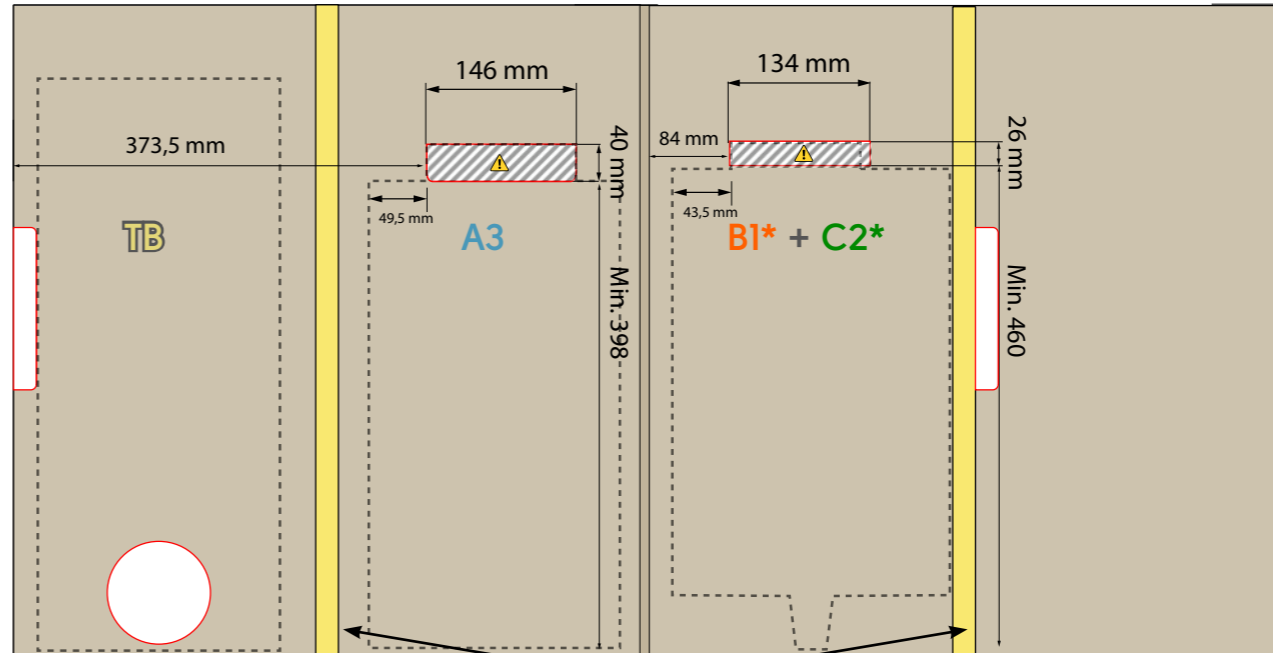
 Cutout dependent on Fridge/Cooler selection

 Cutout here

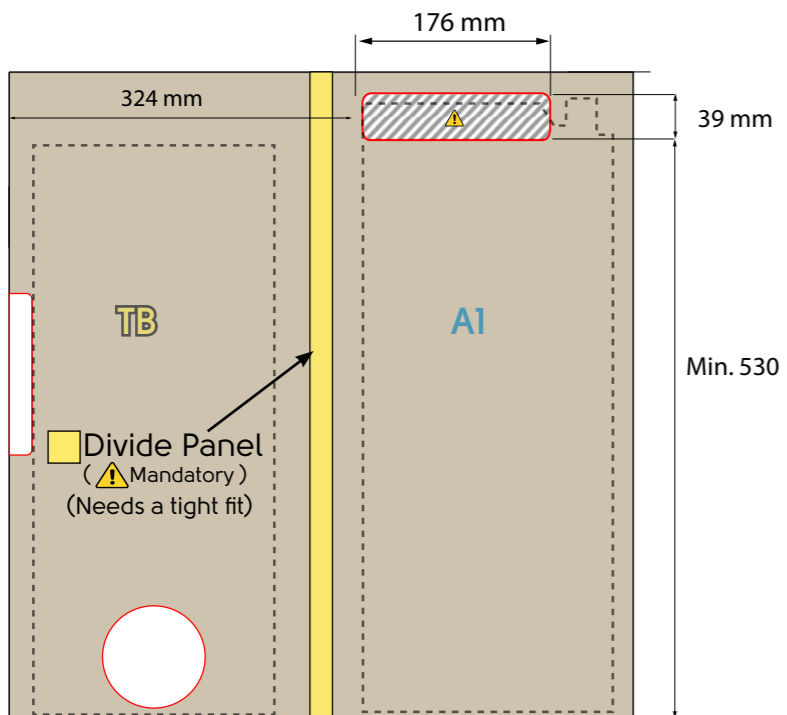
② UNITS: TB + A3



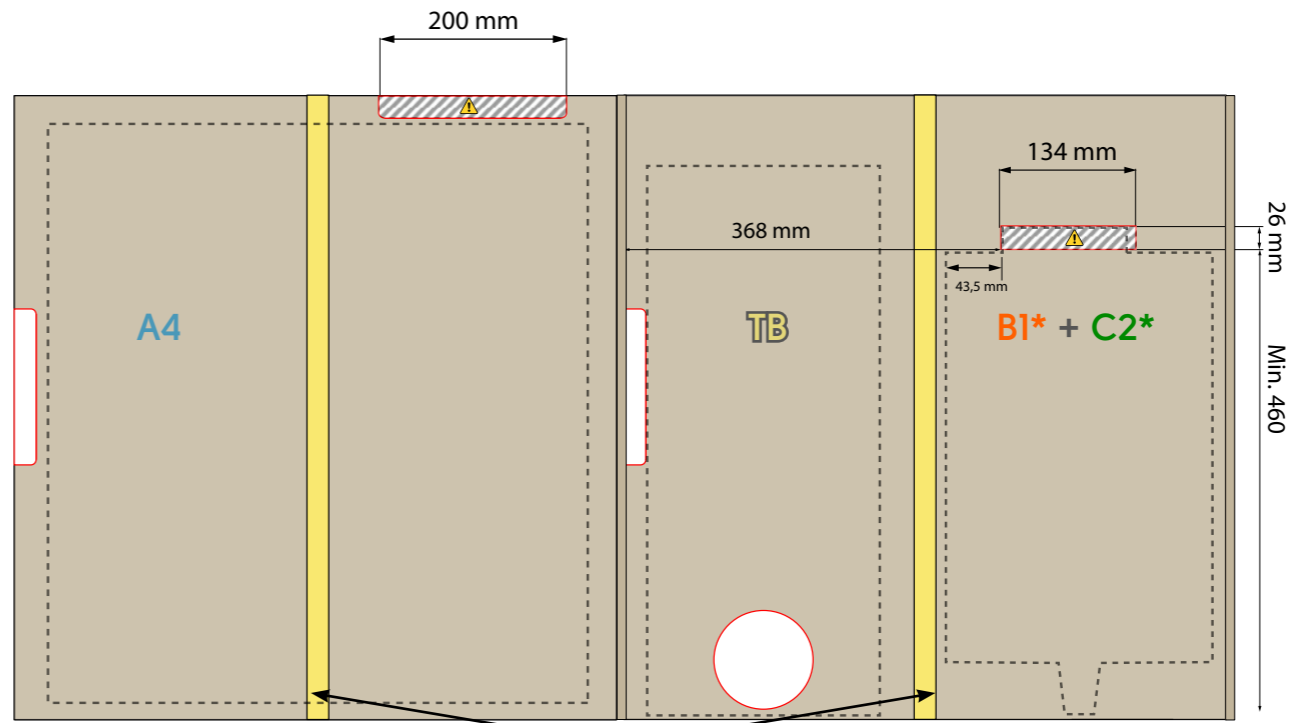
③ UNITS: TB + A3 + B1* + C2*



④ UNITS: TB + A1



⑤ UNITS: A4 + TB + B1* + C2*



*Optional units

VENTILATION

Video
Ventilation Walkthrough



Ventilation requirements

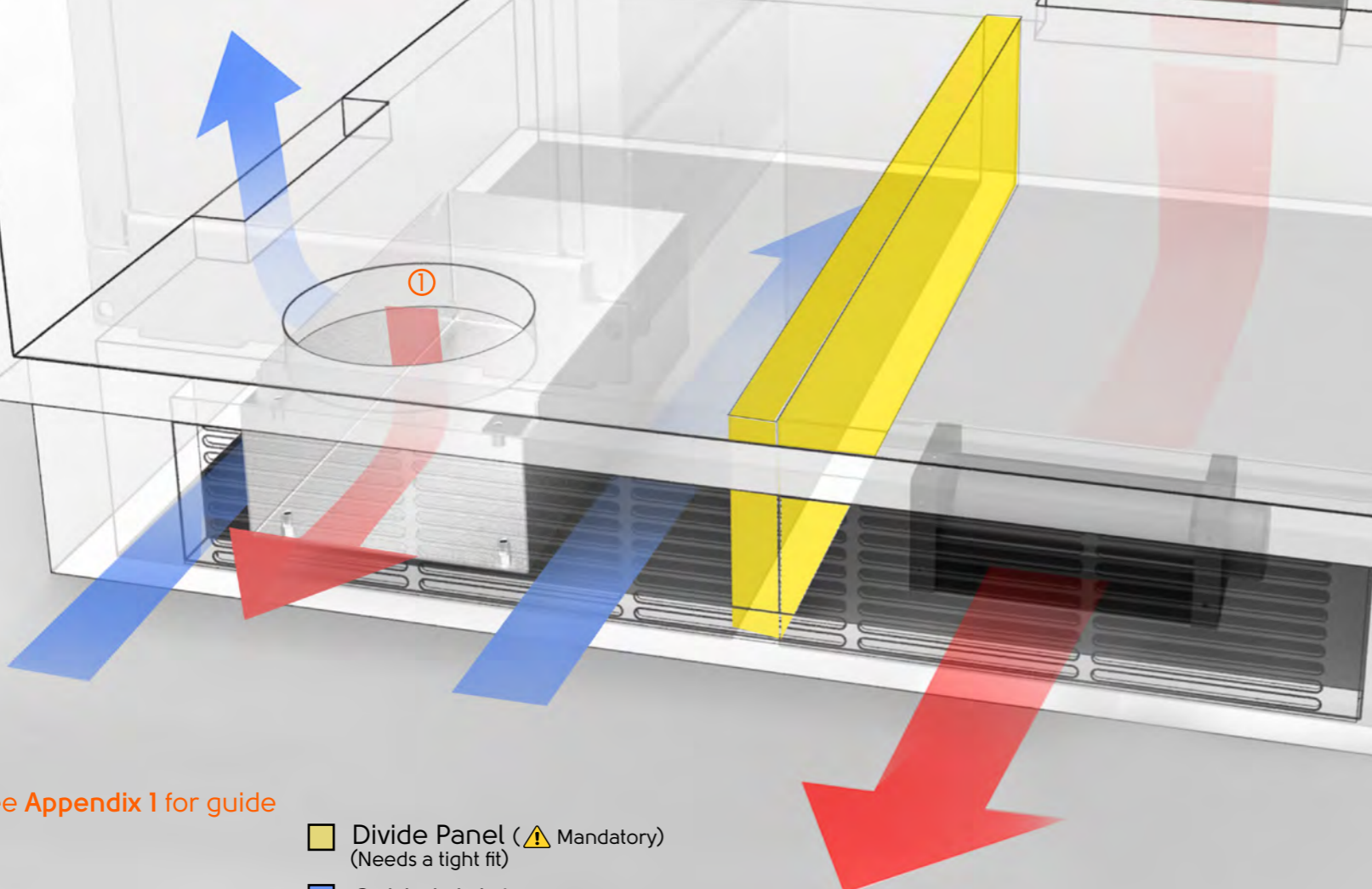
Overall Requirements:

- Maximum 35 °C / 95 °F operating temperature, measured in the top of the cabinet
- Allow both TopBrewer and fridge clearance to ensure airflow. The clearances are included in the specified measurements on page 7

Built in TopBrewer Pro Fan ①

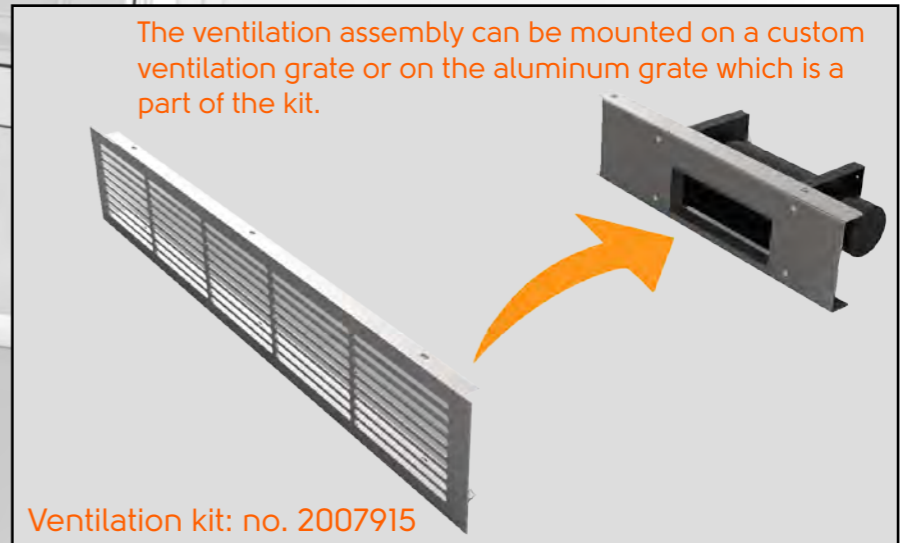
Every TopBrewer Pro is equipped with a ventilation fan at the front bottom of the unit.

The sensor should be placed as high as possible, though no higher than 10 cm from the underside of the tabletop.
The sensor can be placed on the backing or sidepanel.



Place the hood ontop of the ventilation outlet made in the cabinet. This lets the hot air exit directly through the toekick.

Note: The hood is fitted to the back of the fridge/cooler from factory



The ventilation assembly can be mounted on a custom ventilation grate or on the aluminum grate which is a part of the kit.

Ventilation kit: no. 2007915

① See Appendix 1 for guide

- Divide Panel (⚠ Mandatory) (Needs a tight fit)
- Cold air inlet
- Hot air outlet

ELECTRICAL

Video
Electrical Walkthrough



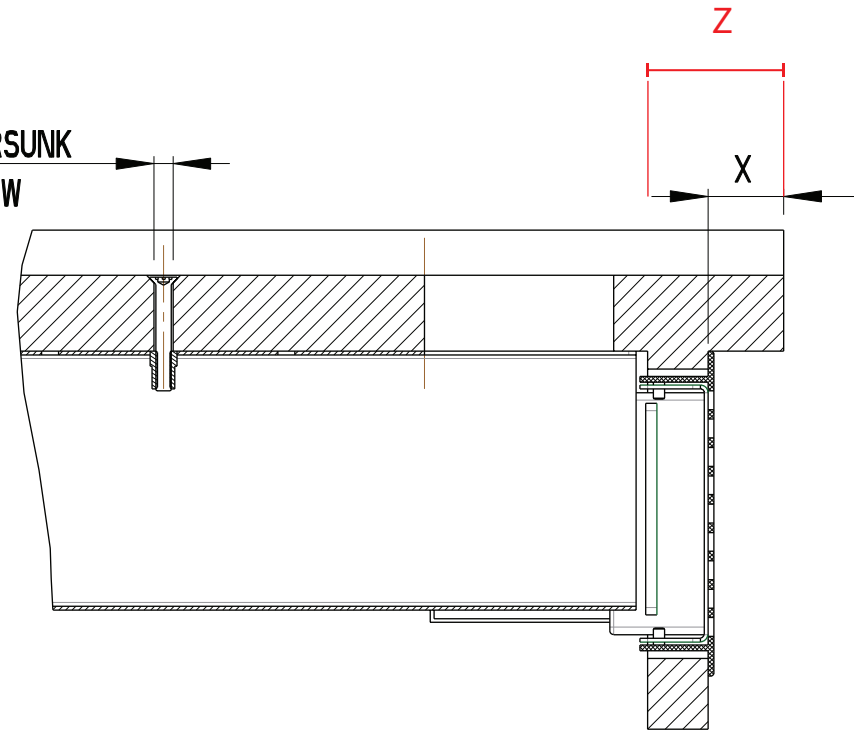
PLUMBING

Video
Plumbing Walkthrough

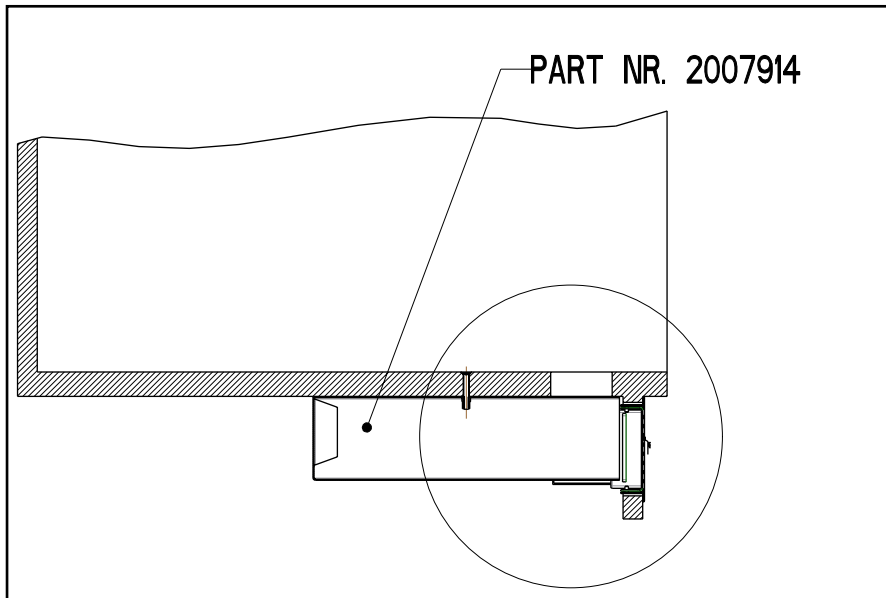


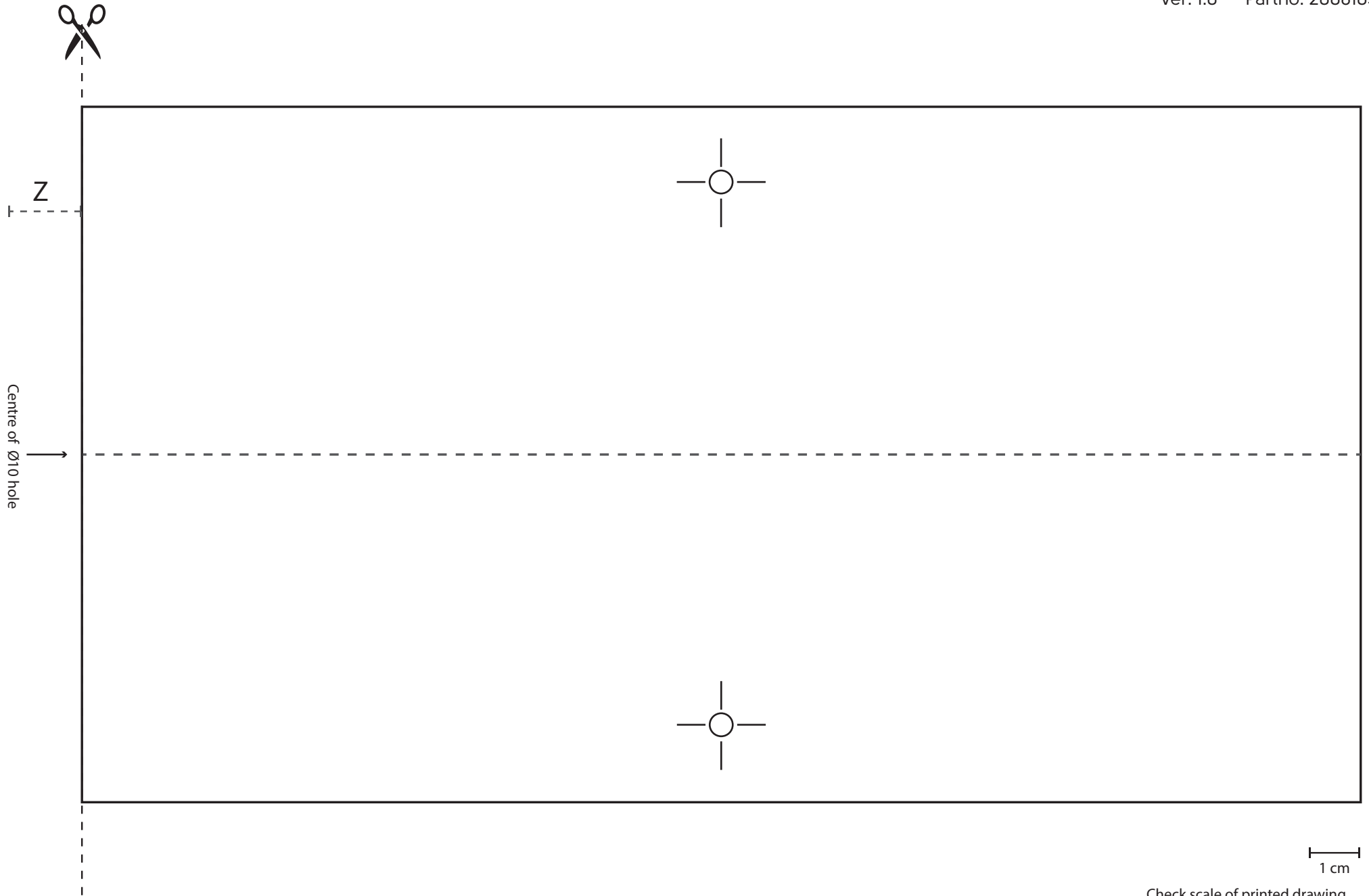
APPENDIX

2X $\varnothing 5$ COUNTERSUNK
FOR M4 SCREW



Y-MIN. = 18, IF $Y > 18$ THEN USE
ACTUAL THICKNESS WHEN YOU
CALCULATE POS. OF HOLES.
 $(X+Y = Z)$





1 cm

Check scale of printed drawing.
Select **ACTUAL SIZE** in printer dialog.