

# BLOORVISTA

AT ISLINGTON TERRACE

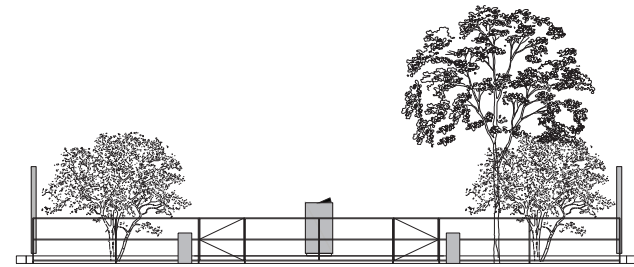
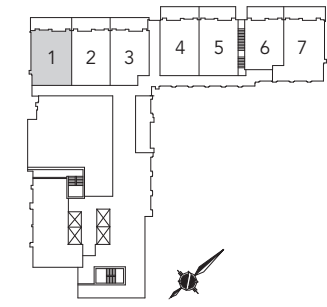
**TRIDEL**  
BUILT FOR LIFE



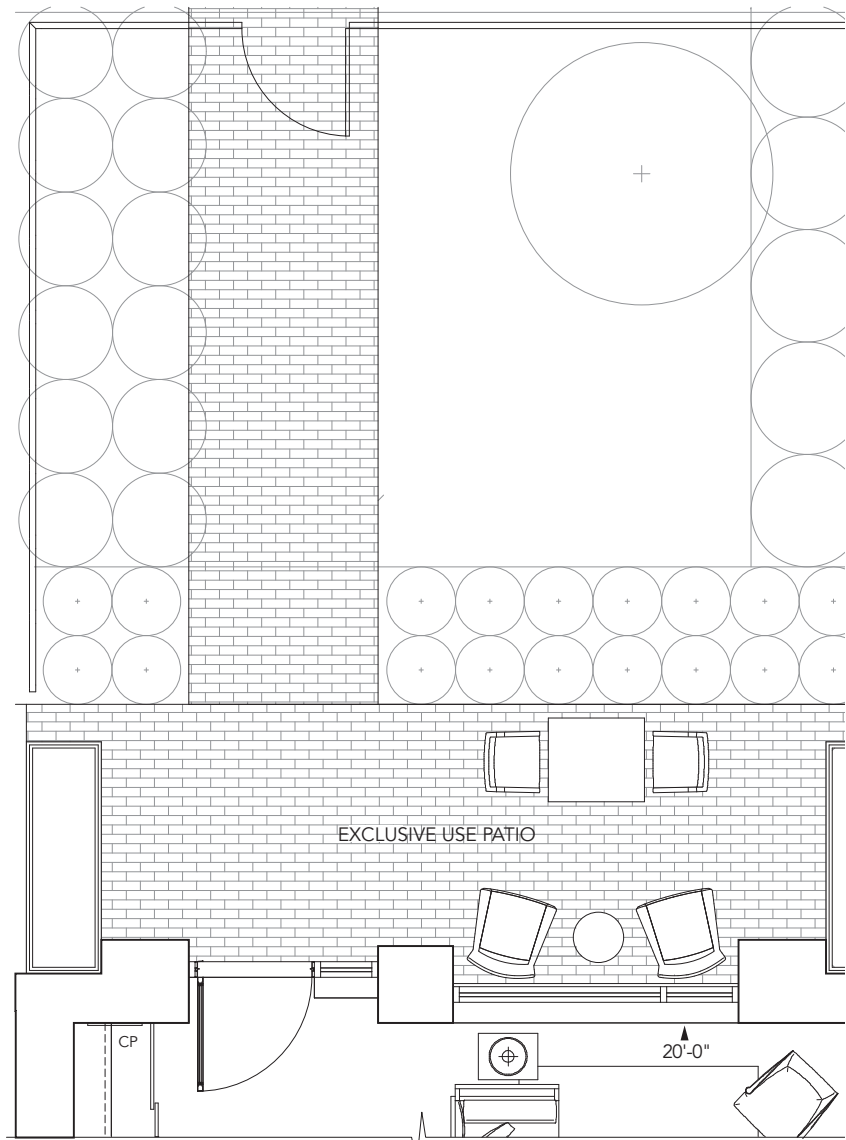


# TOWNHOME 1

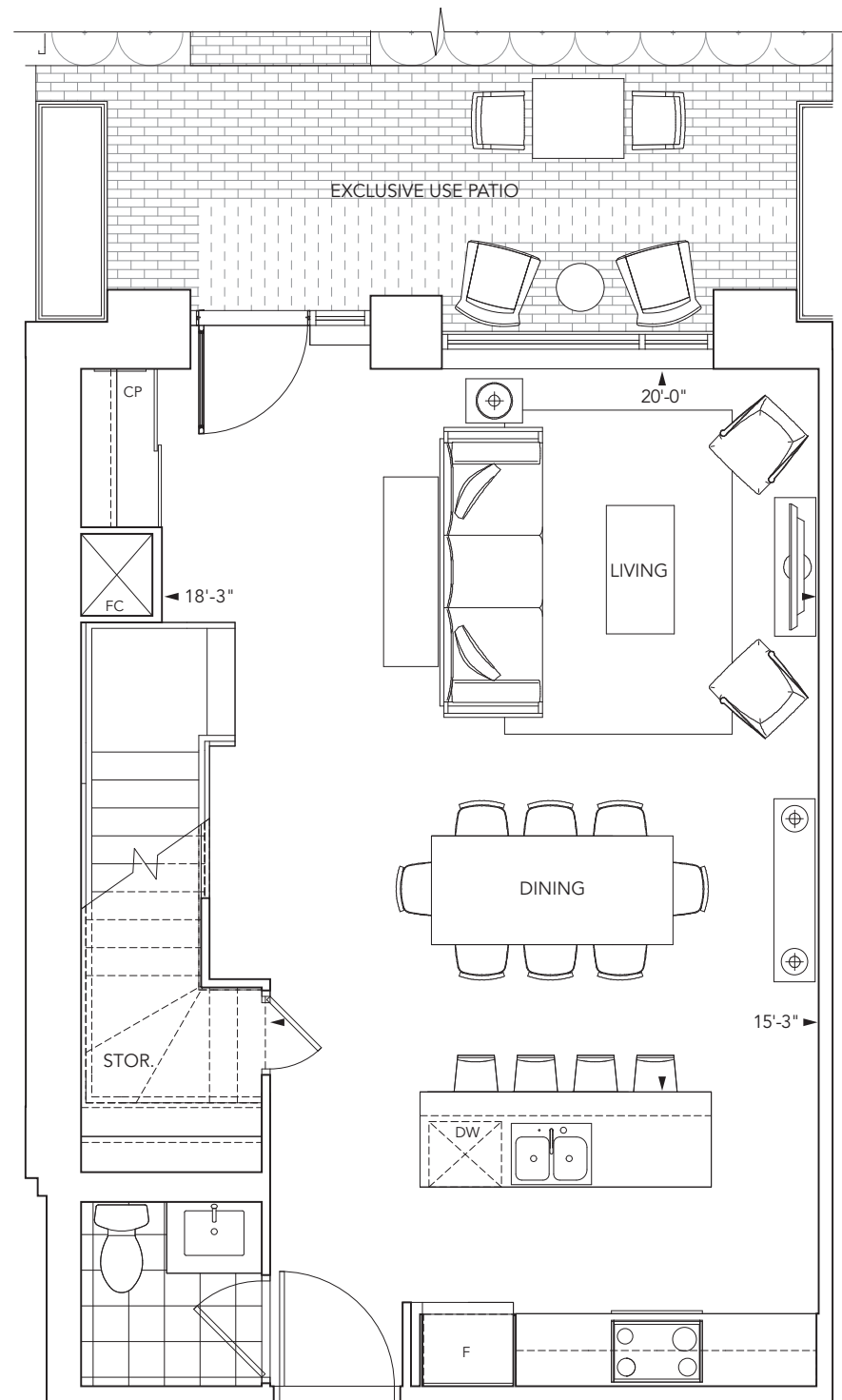
3 bedroom, 2 1/2 bathrooms, living room, dining room plus patio



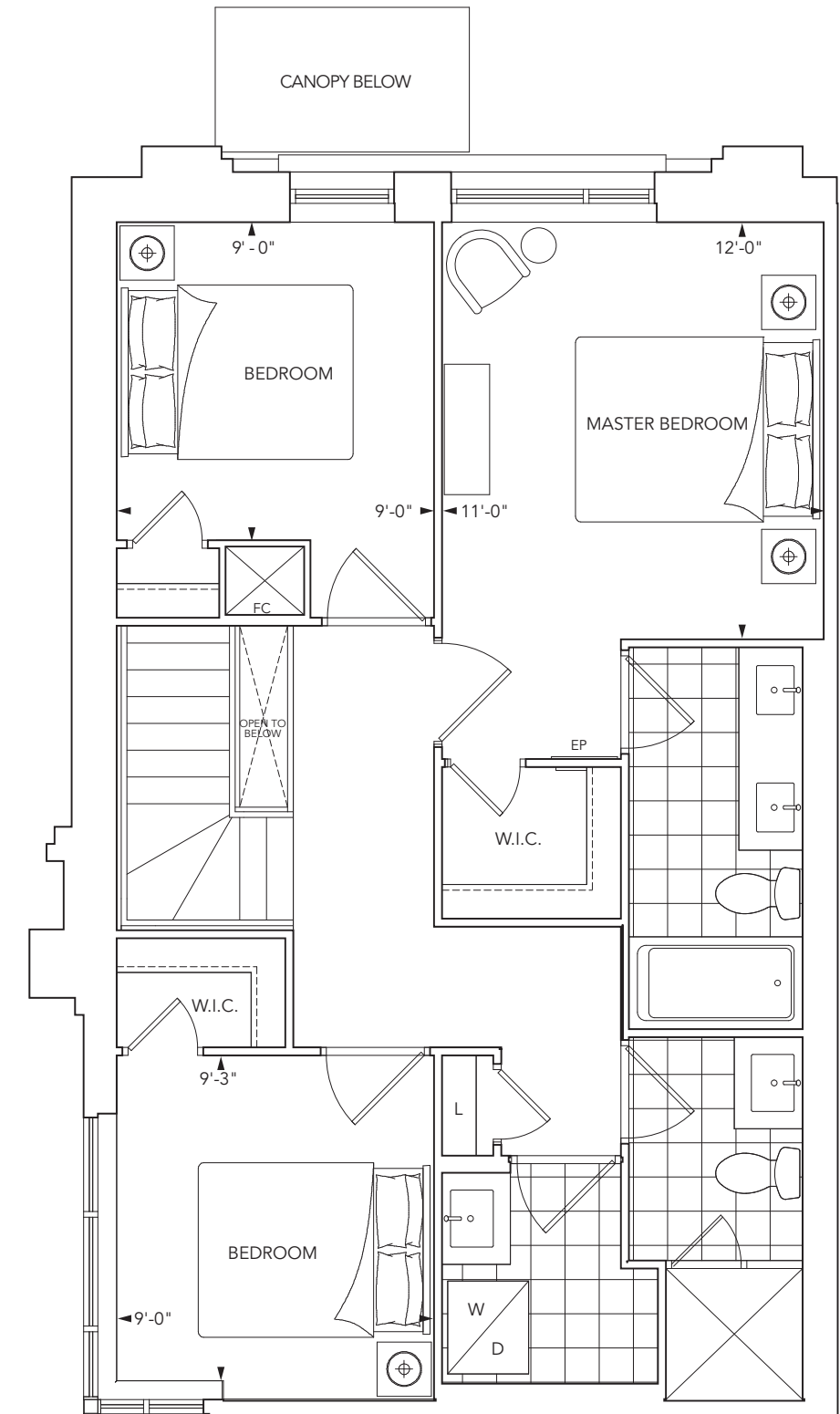
Fence and gate with landscape and patio beyond.



Ground Floor Outdoor Patio



Ground Floor

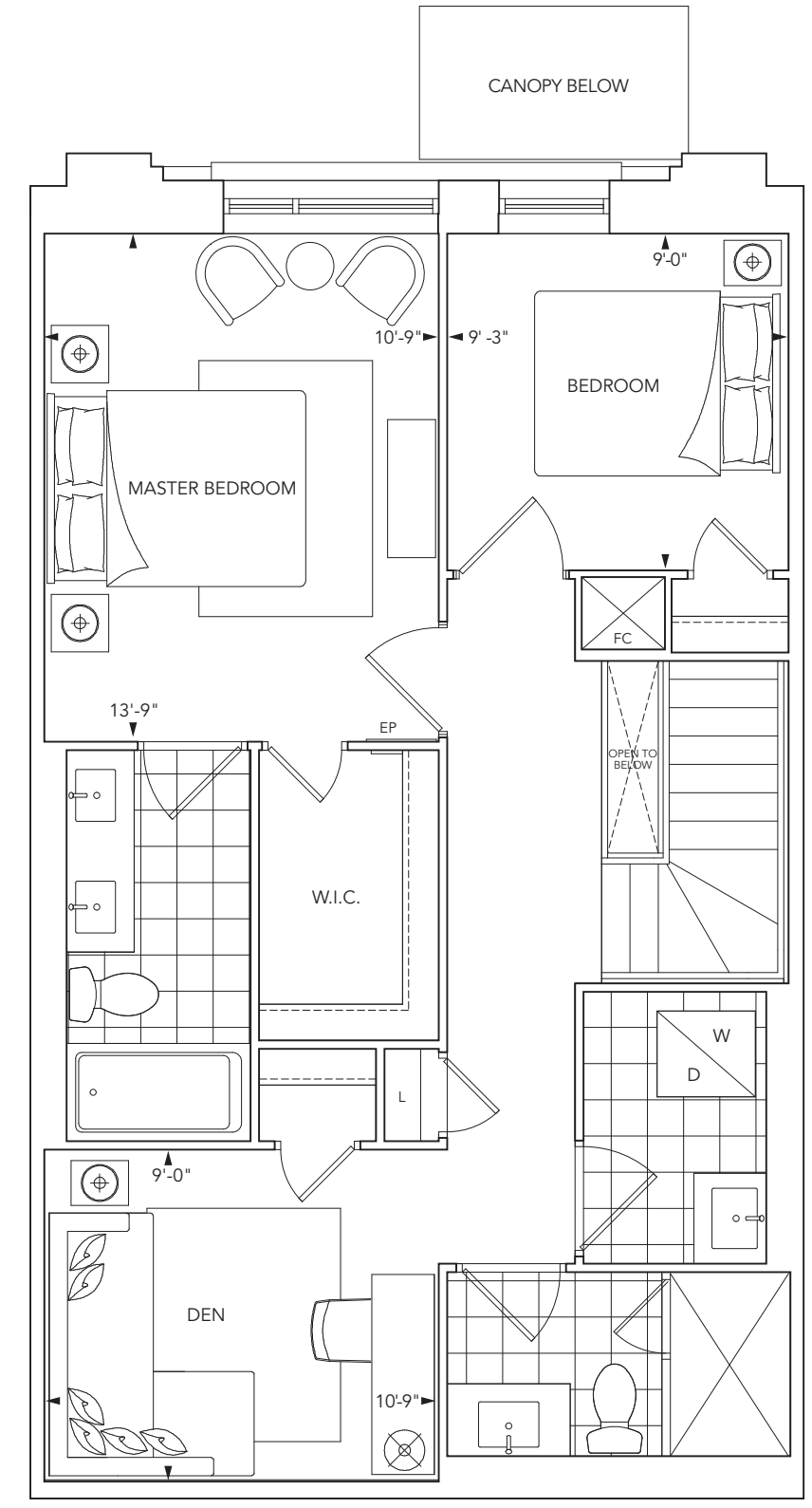
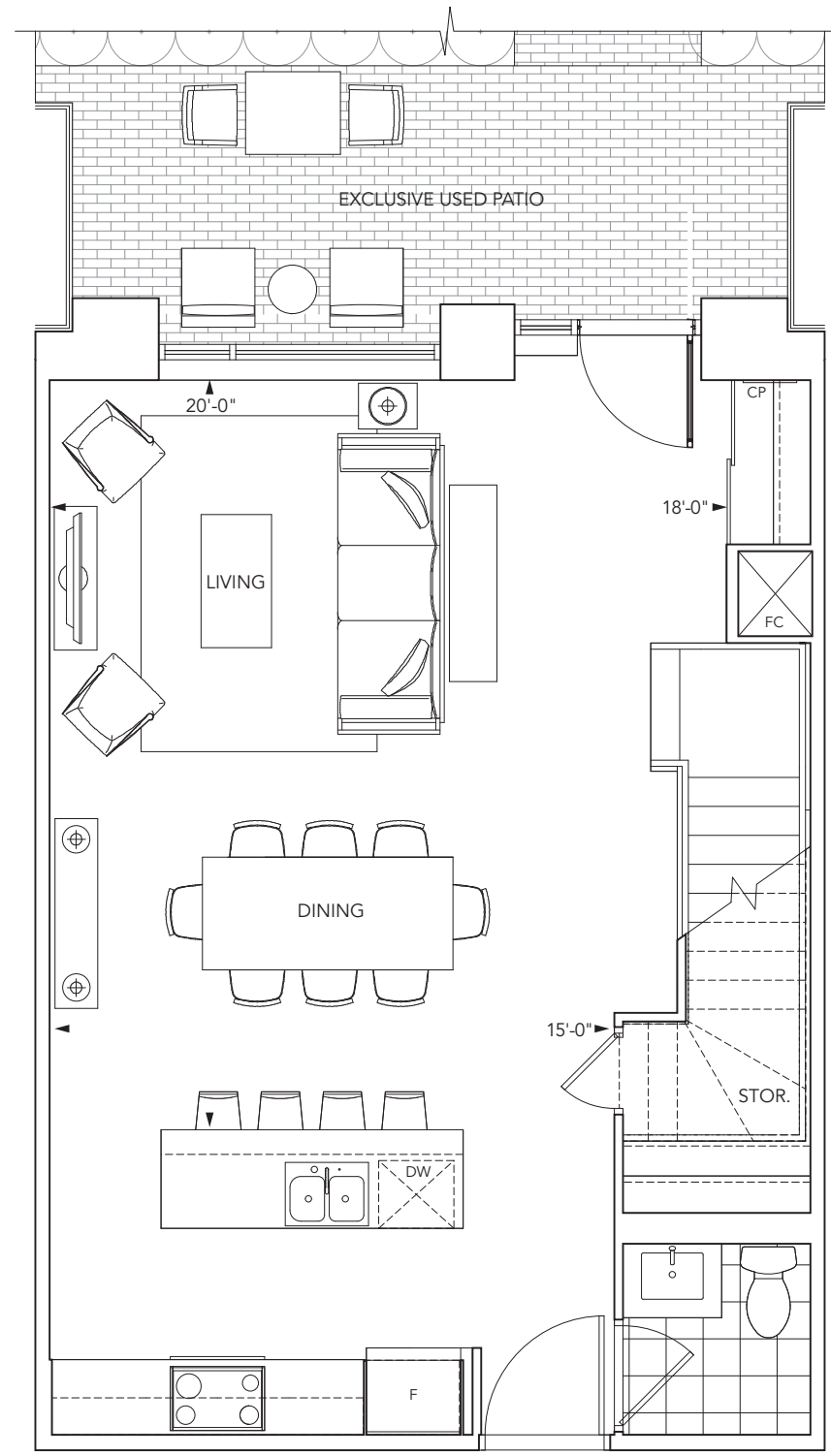
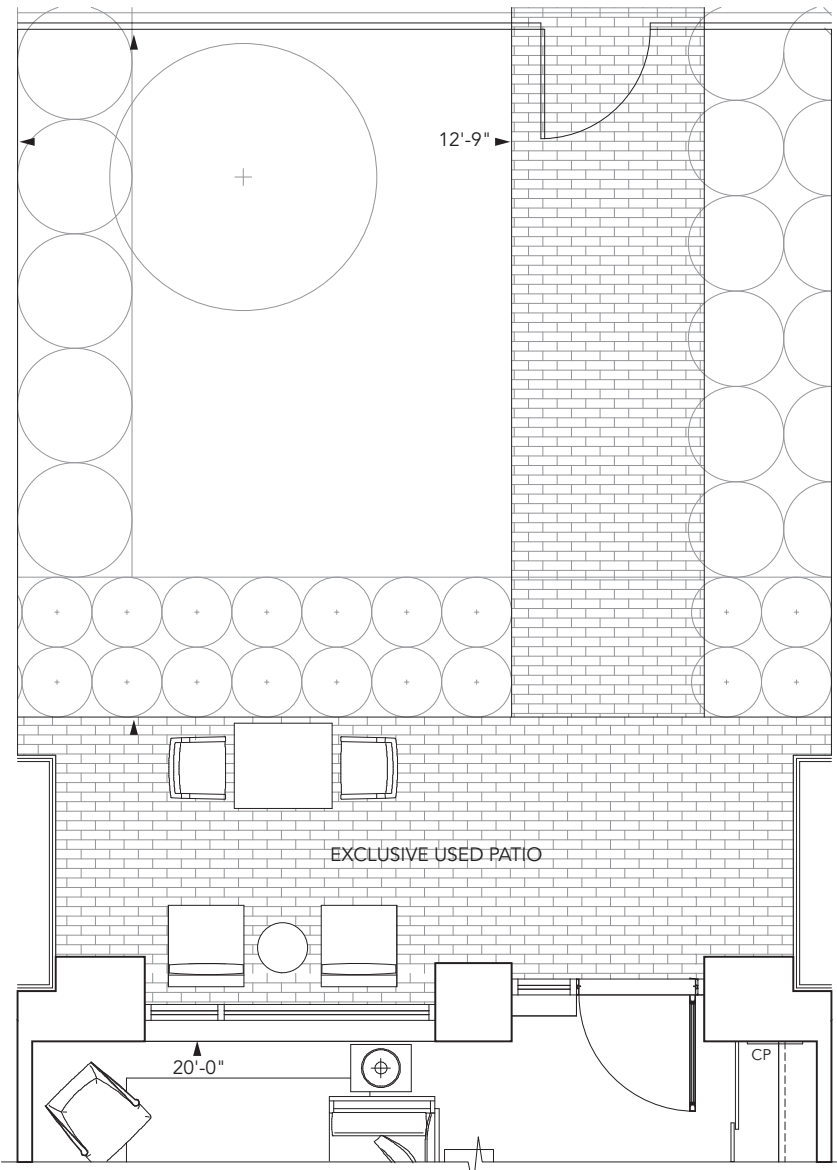
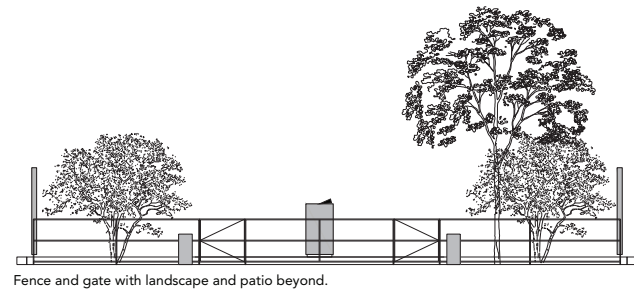
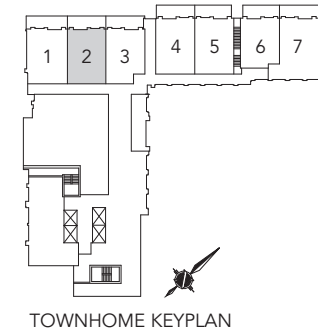


Second Floor



## TOWNHOME 2

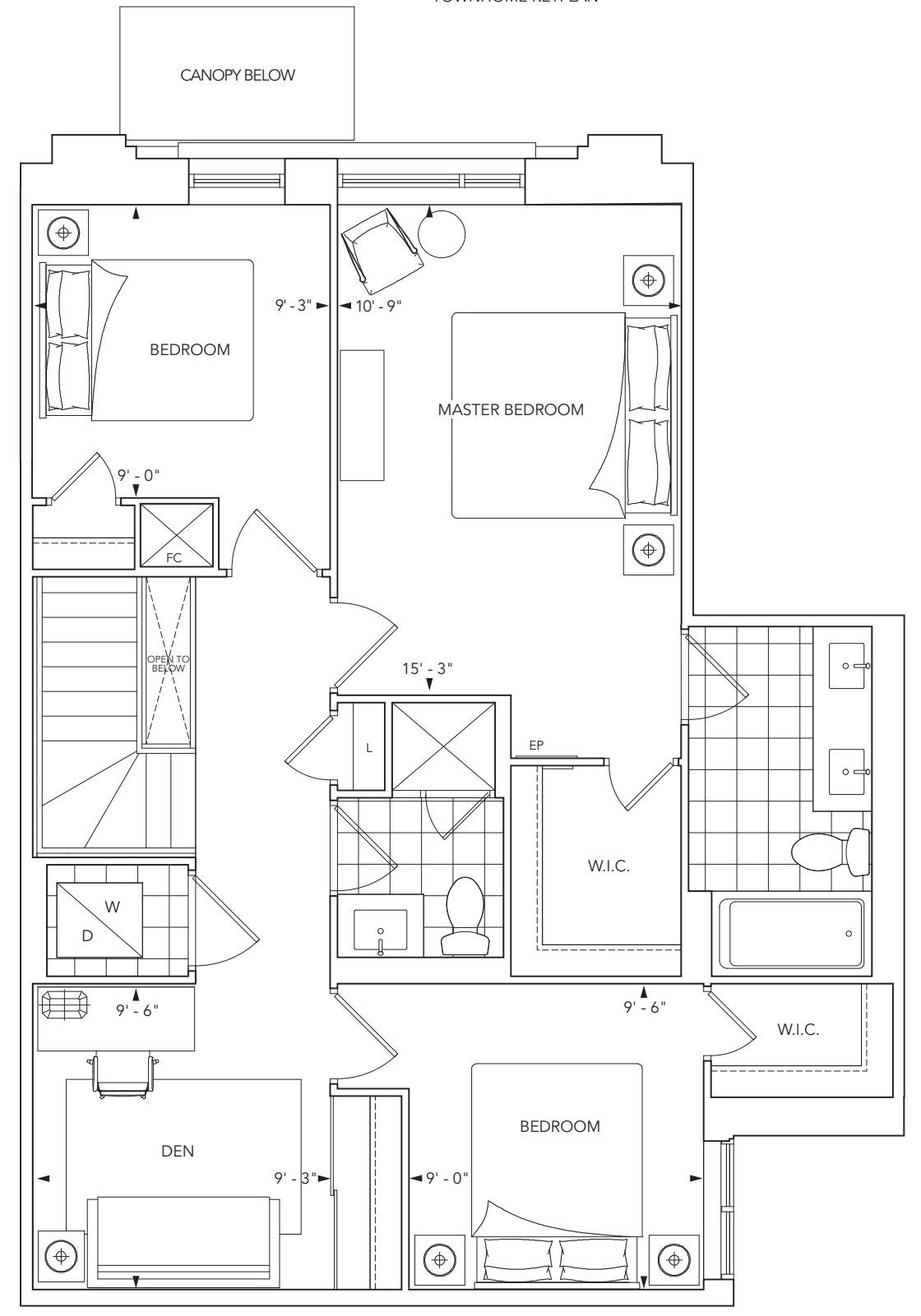
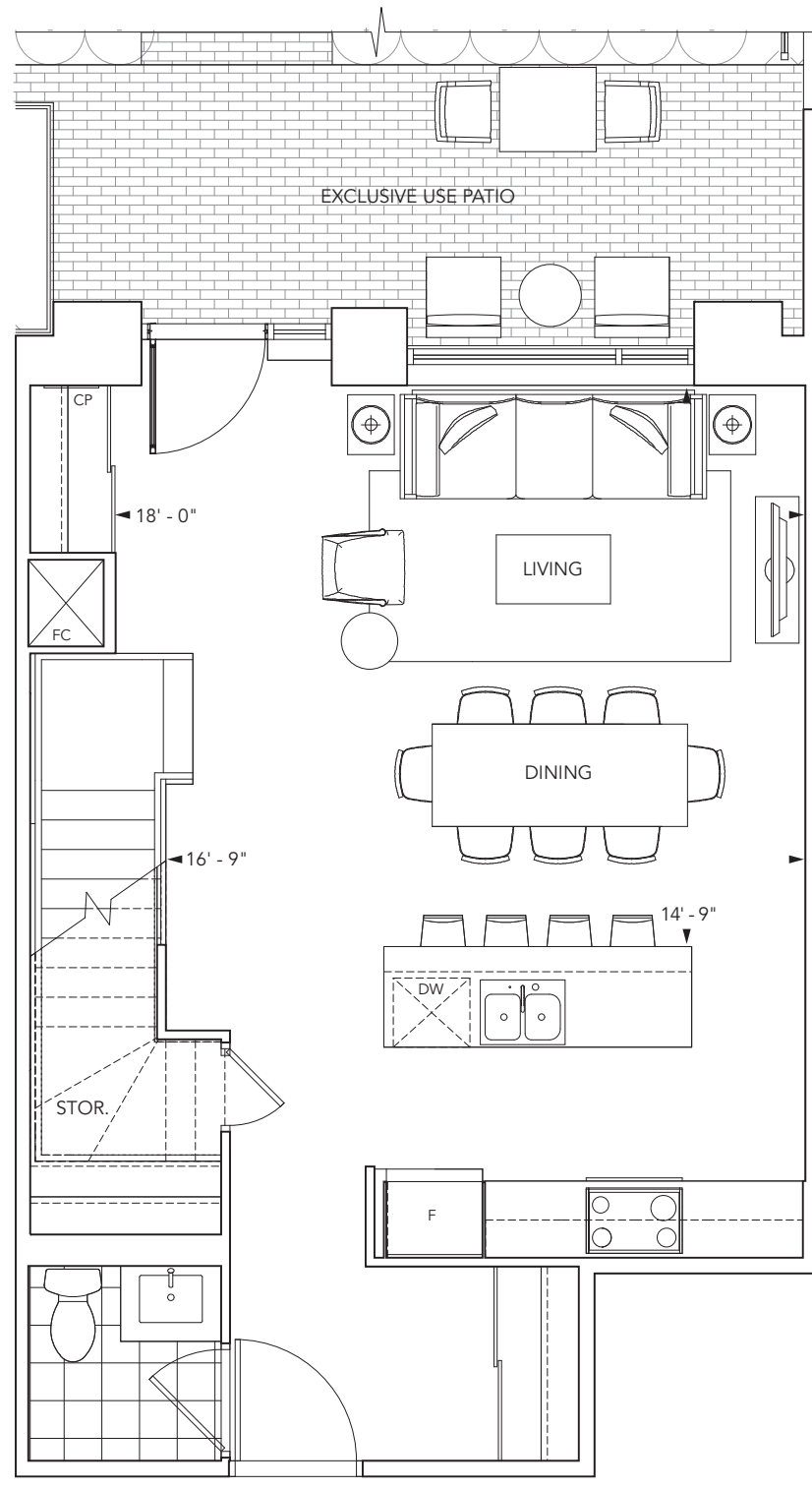
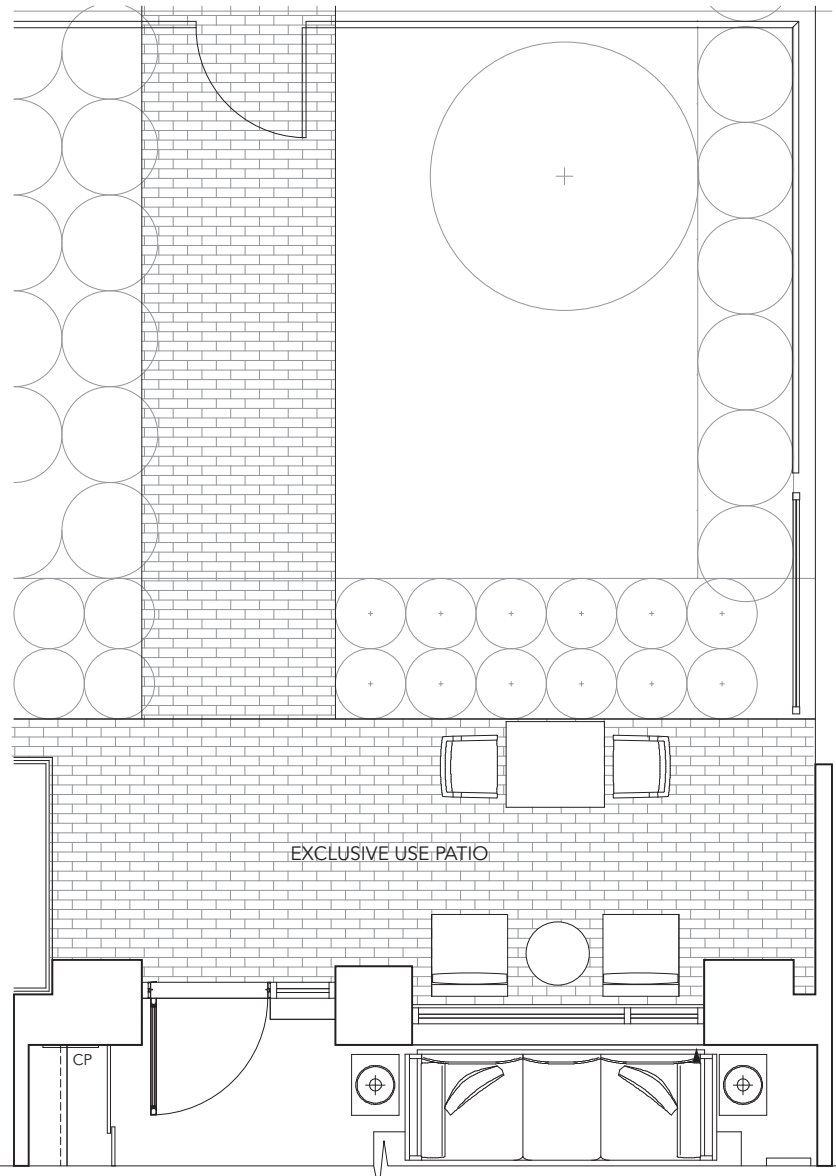
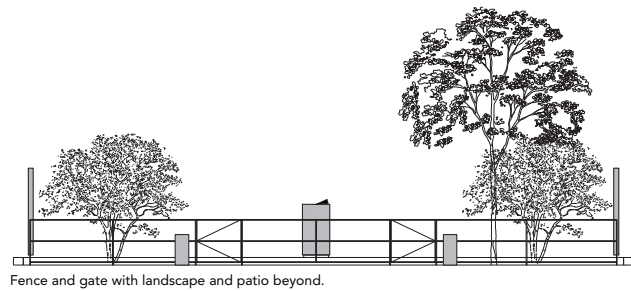
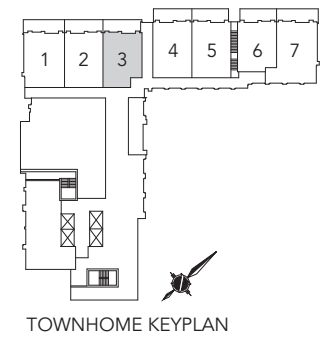
2 bedroom, 2 1/2 bathrooms, living room, dining room, den plus patio





### TOWNHOME 3

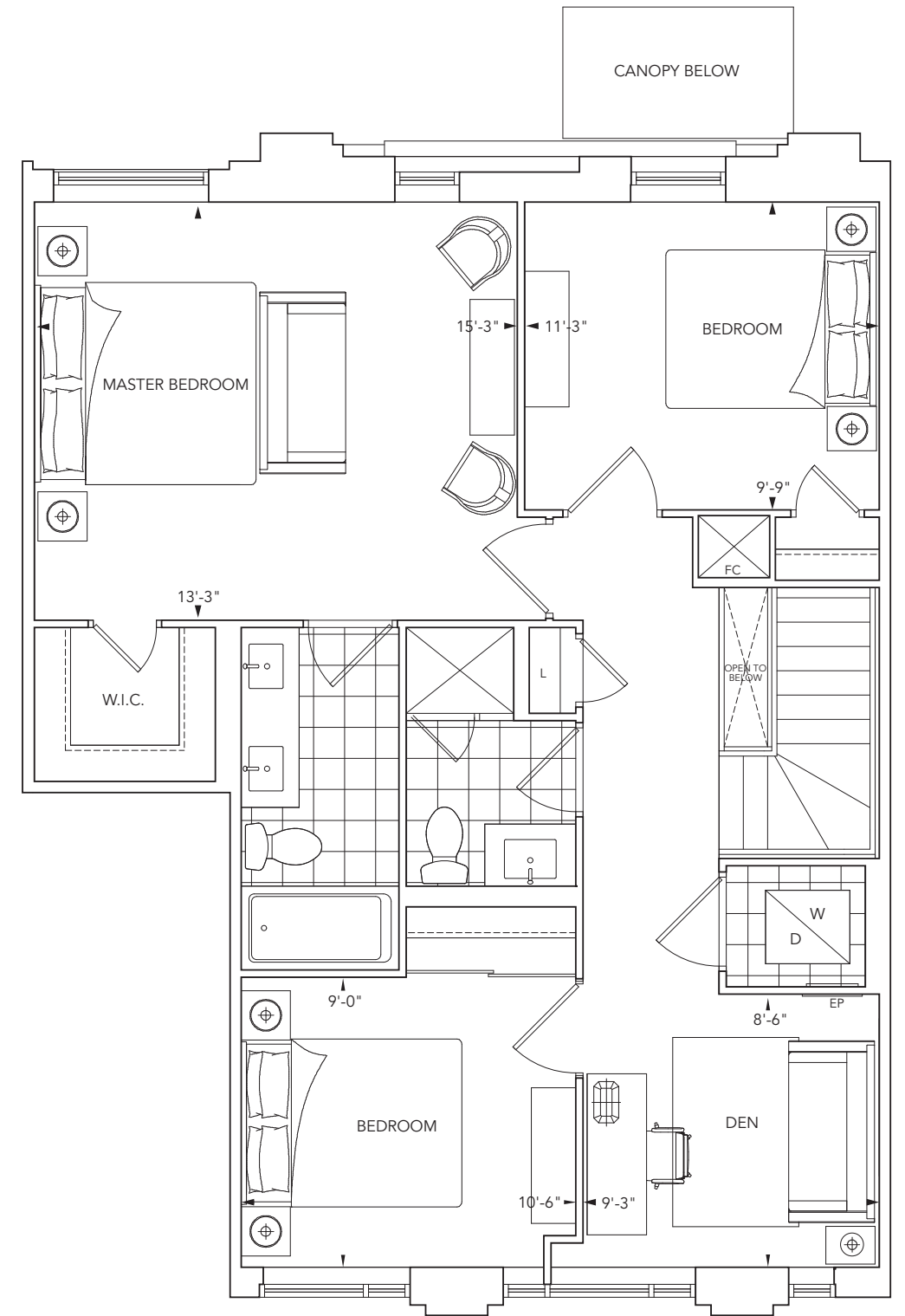
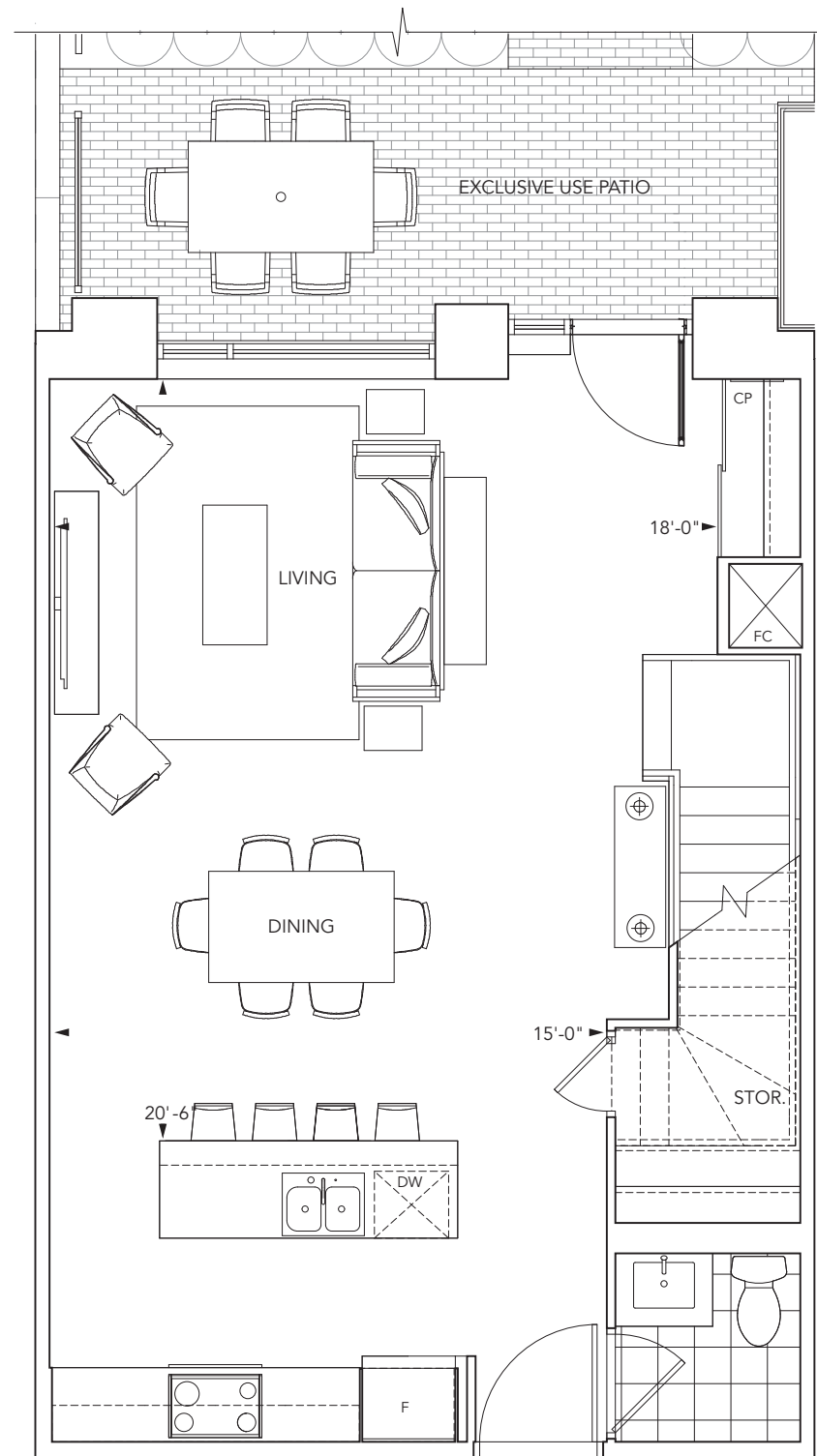
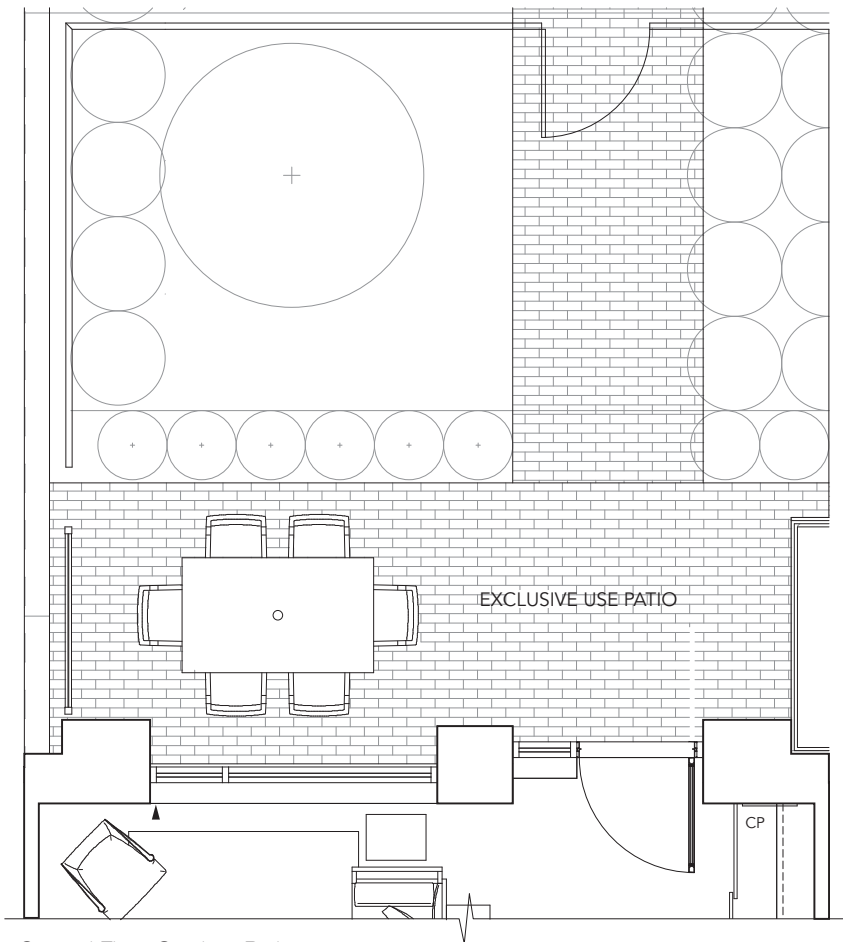
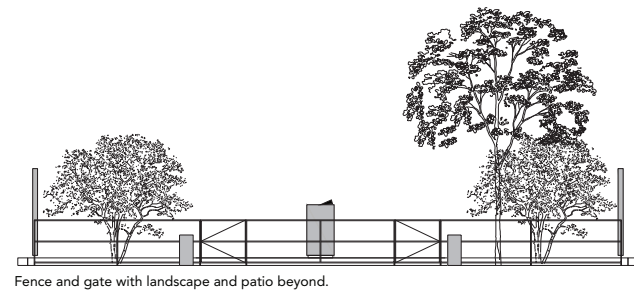
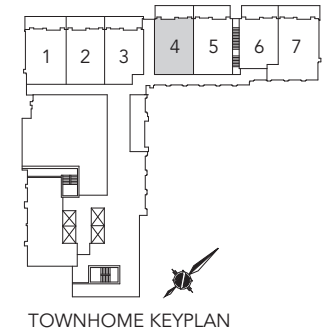
3 bedroom, 2 1/2 bathrooms, living room, dining room, den plus patio



Fence and gate detail with landscape and patio beyond. Subject to change without notice. Illustrations are artist's concept. All dimensions are approximate and subject to normal construction variances. Dimensions may exceed the useable floor area. Sizes and specifications subject to change without notice. Furniture is displayed for illustration purposes only and does not necessarily reflect the electrical plan for the suite. Suites are sold unfurnished. Tridel® and Tridel Built For Life® are registered trademarks of Tridel and used under license agreement. ©Tridel 2015. All Rights Reserved. E.& O.E. September 2015



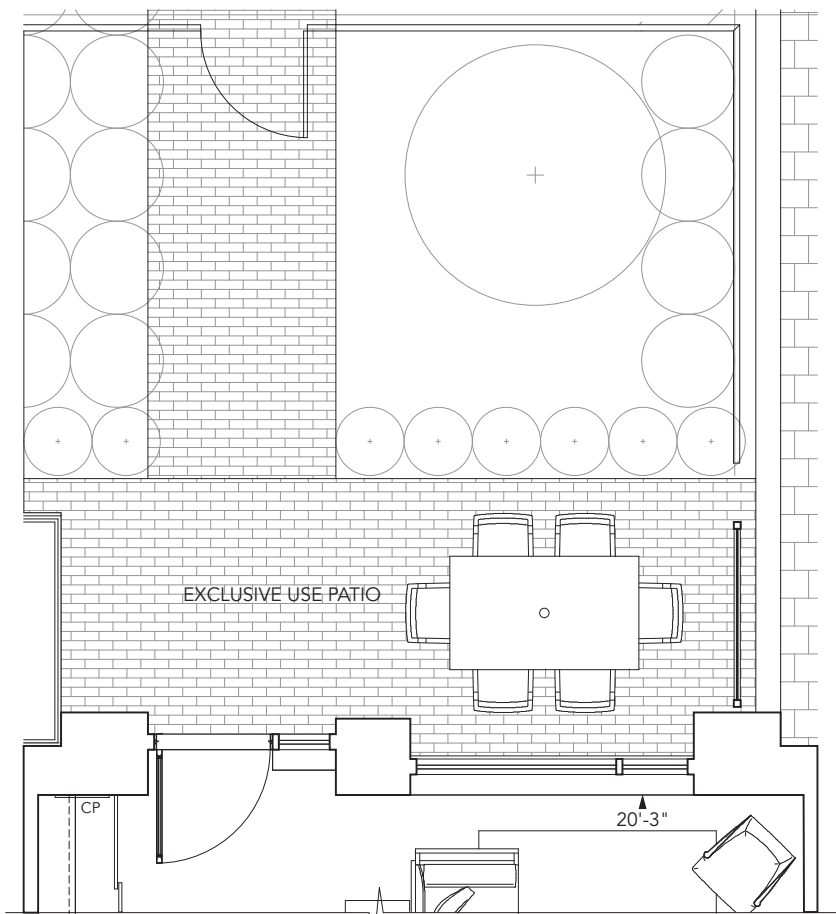
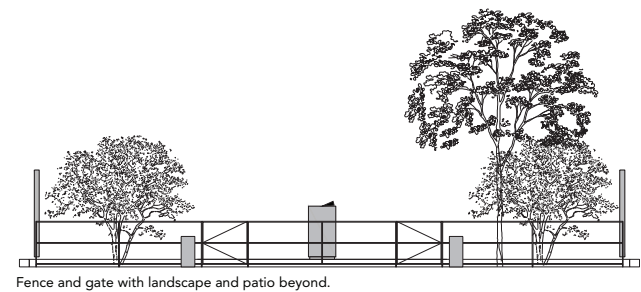
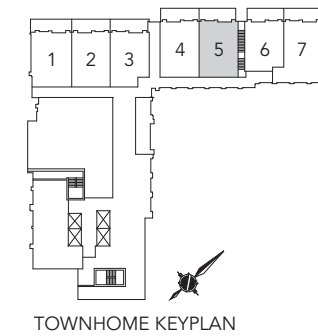
**TOWNHOME 4**  
 3 bedroom, 2 1/2 bathrooms, living room,  
 dining room, den plus patio



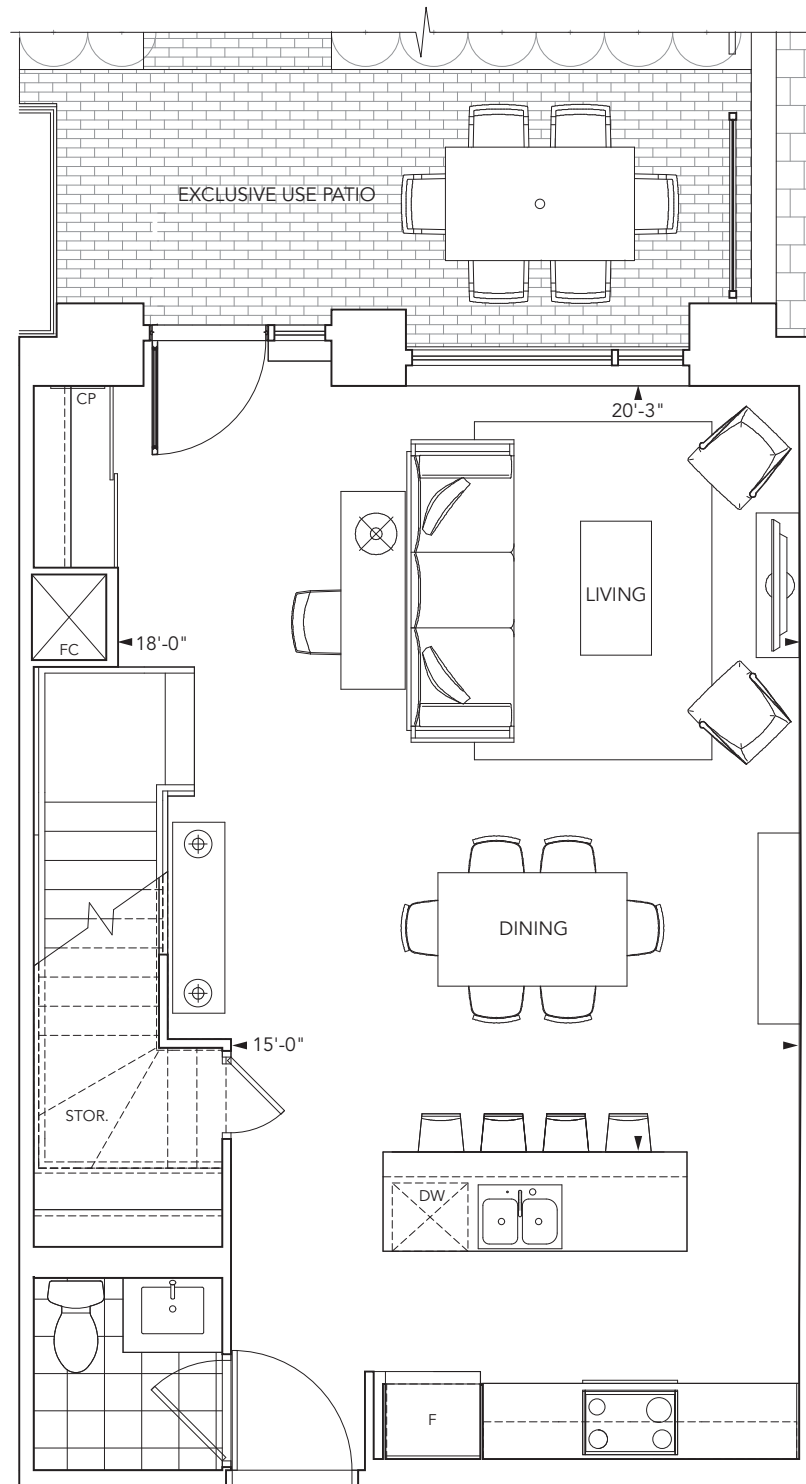


# TOWNHOME 5

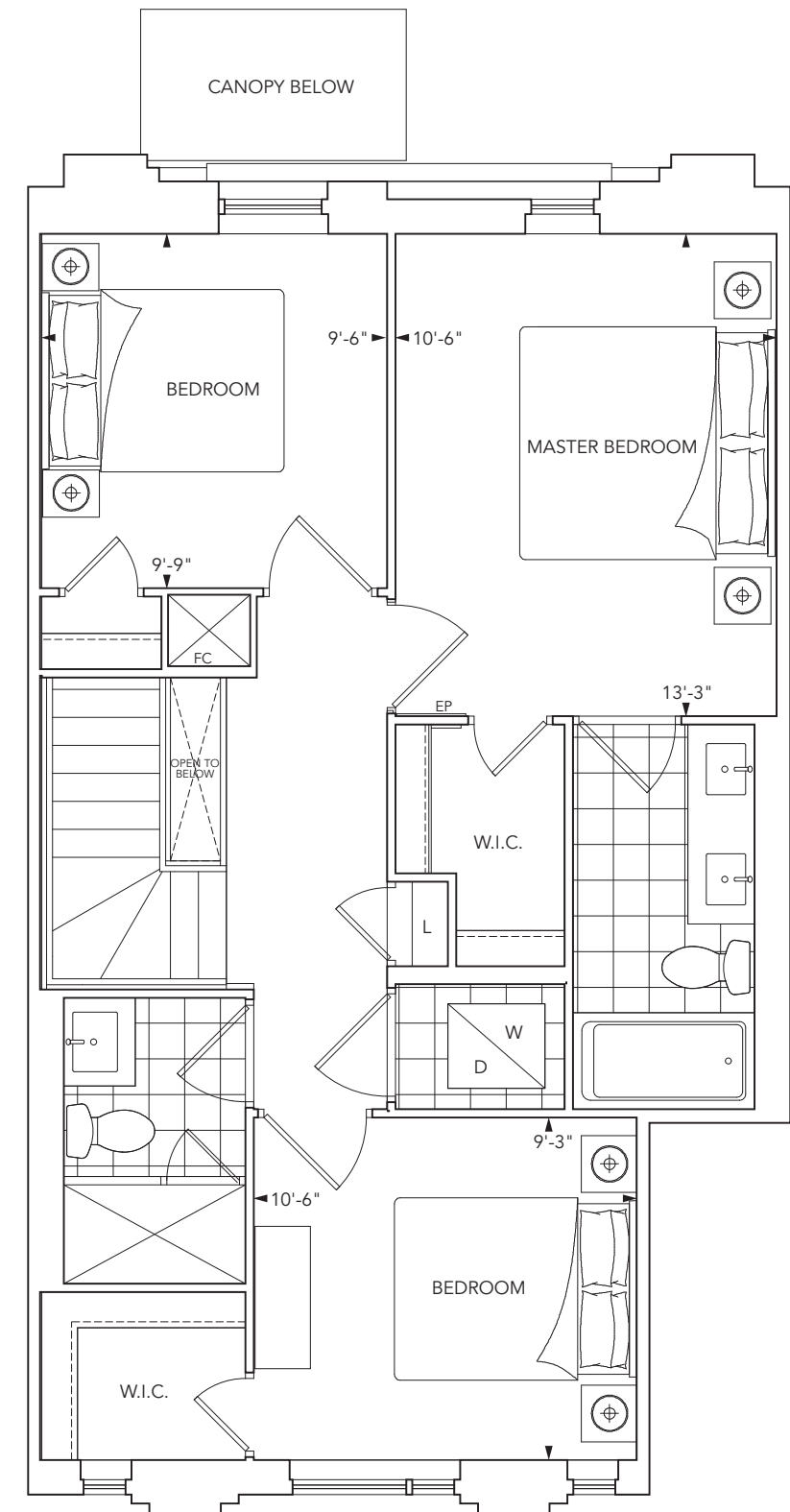
3 bedroom, 2 1/2 bathrooms, living room, dining room plus patio



Ground Floor Outdoor Patio



Ground Floor

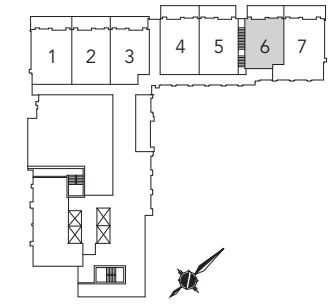


Second Floor

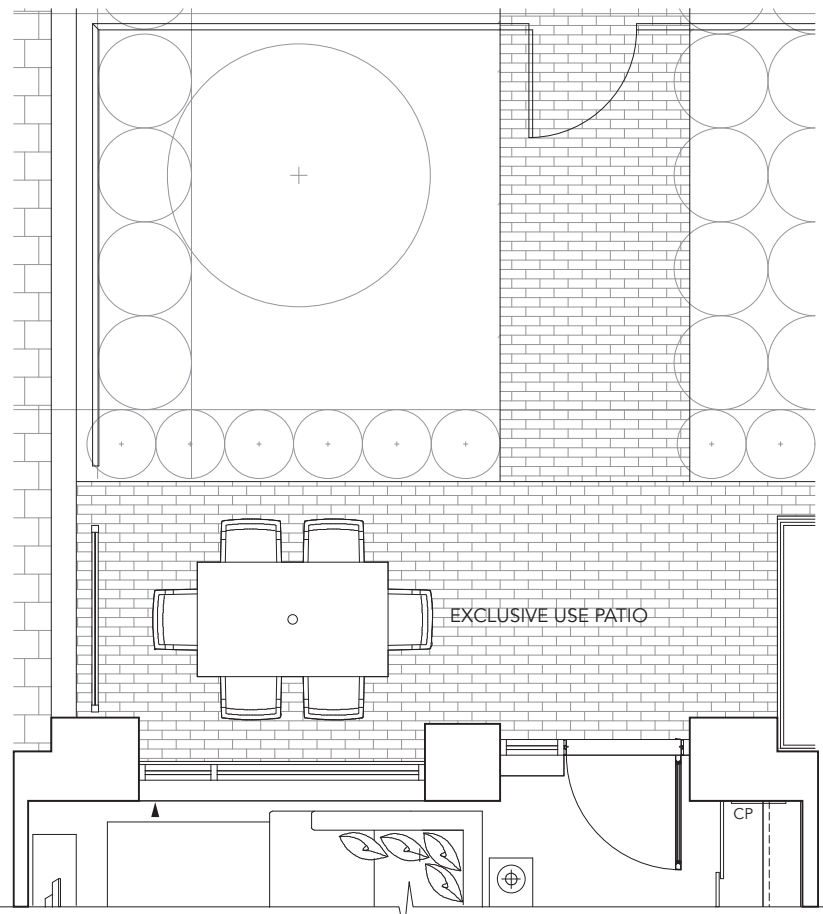
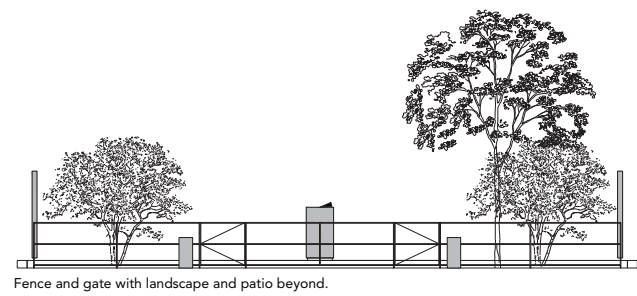


# TOWNHOME 6

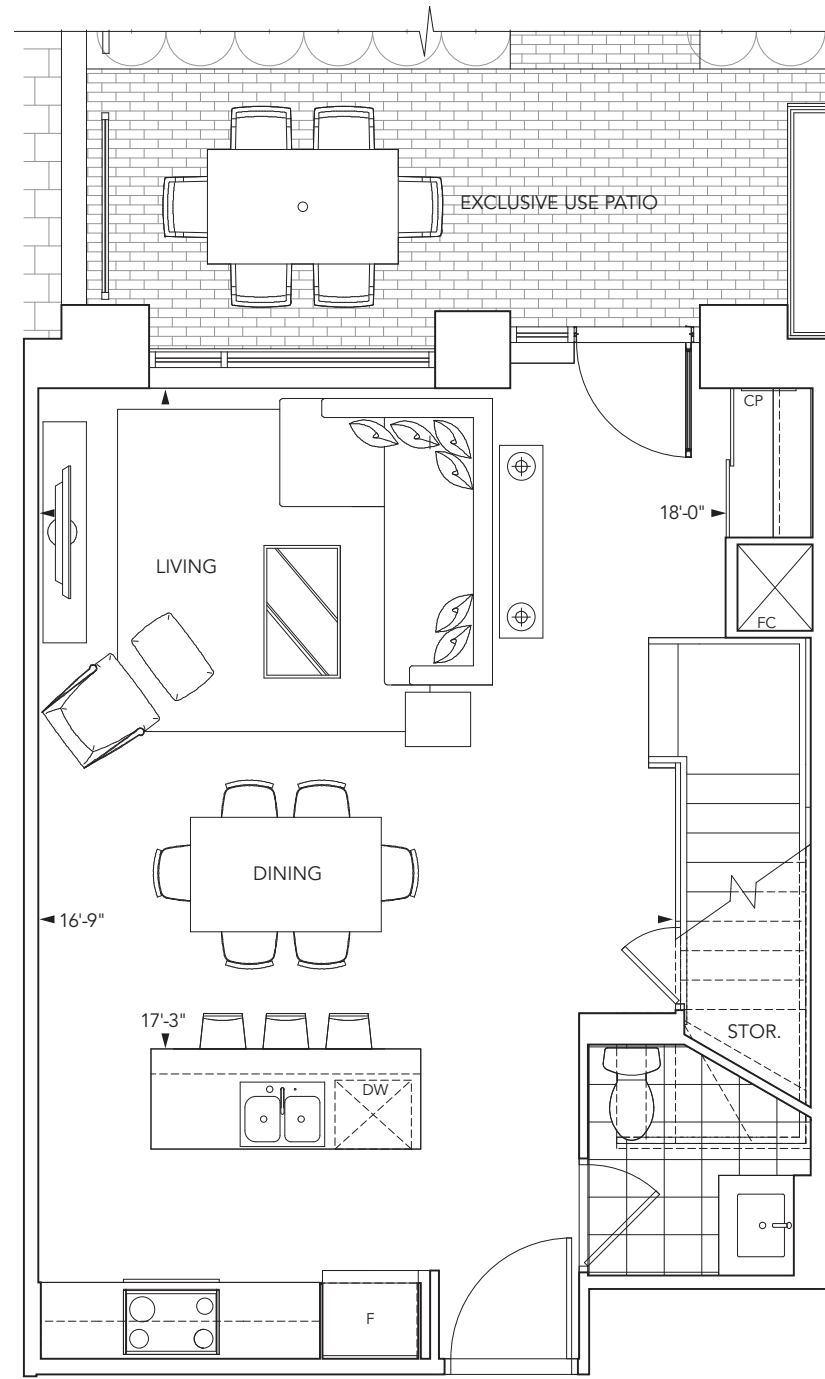
3 bedroom, 2 1/2 bathrooms, living room, dining room plus patio



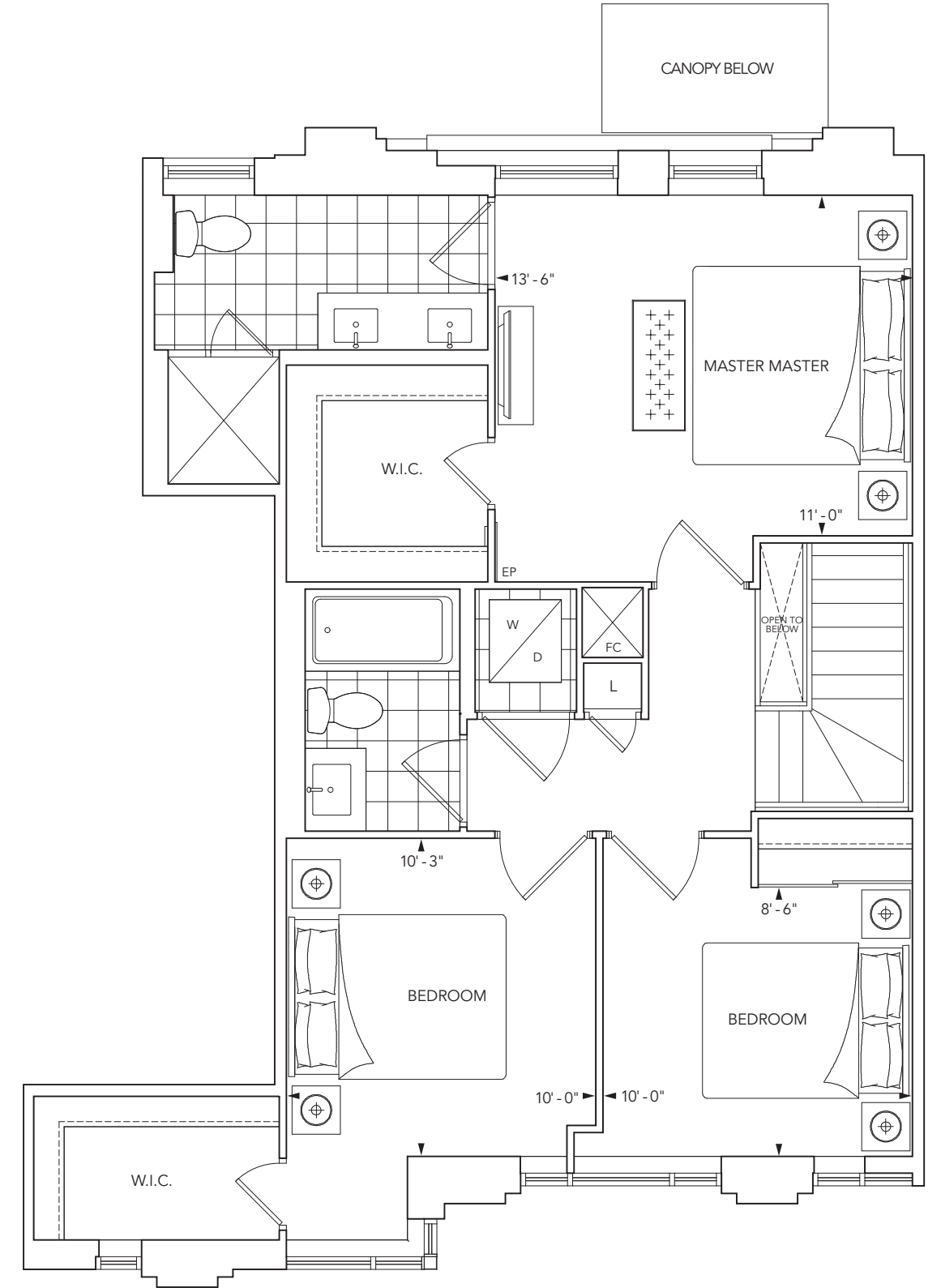
TOWNHOME KEYPLAN



Ground Floor Outdoor Patio



Ground Floor

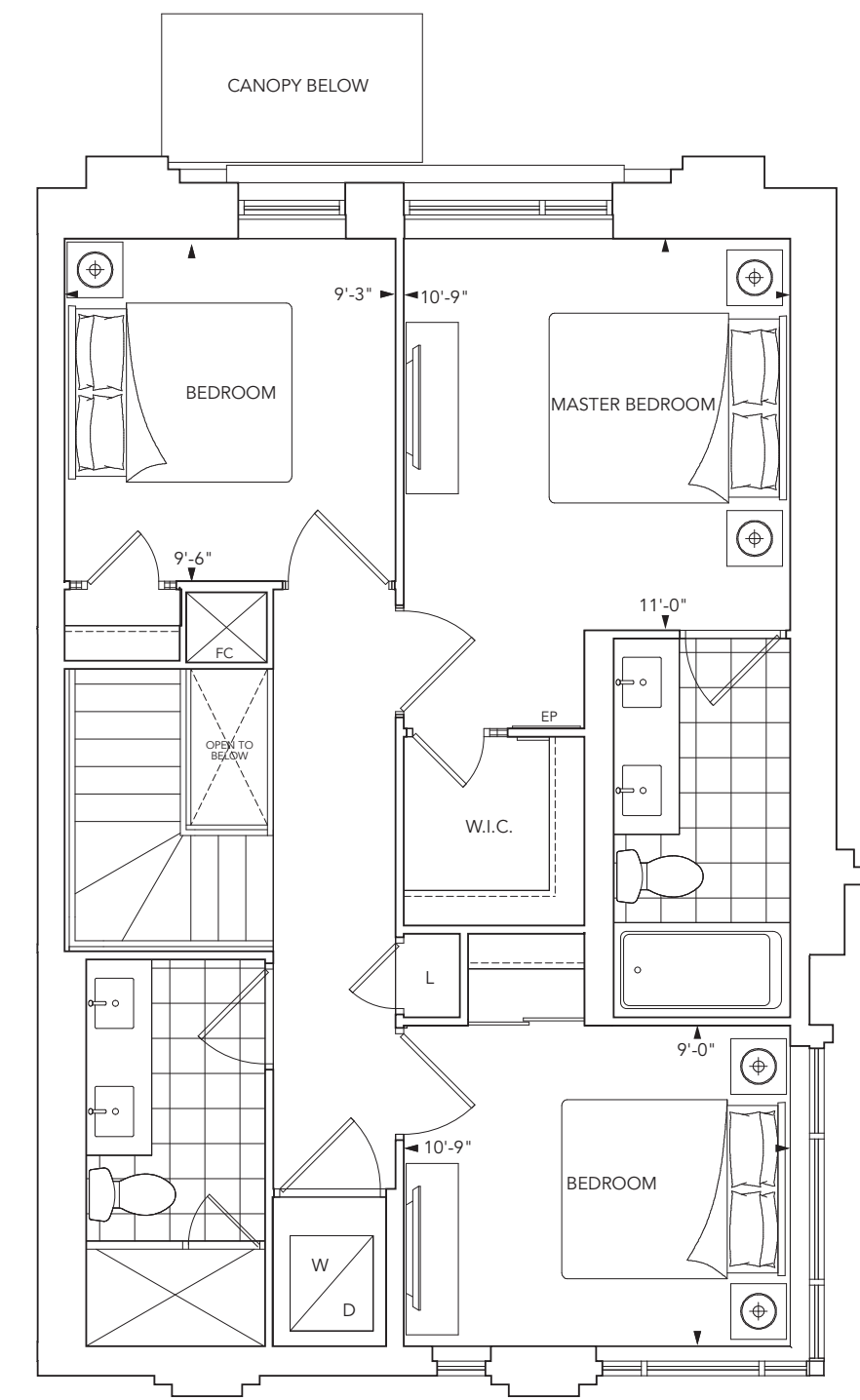
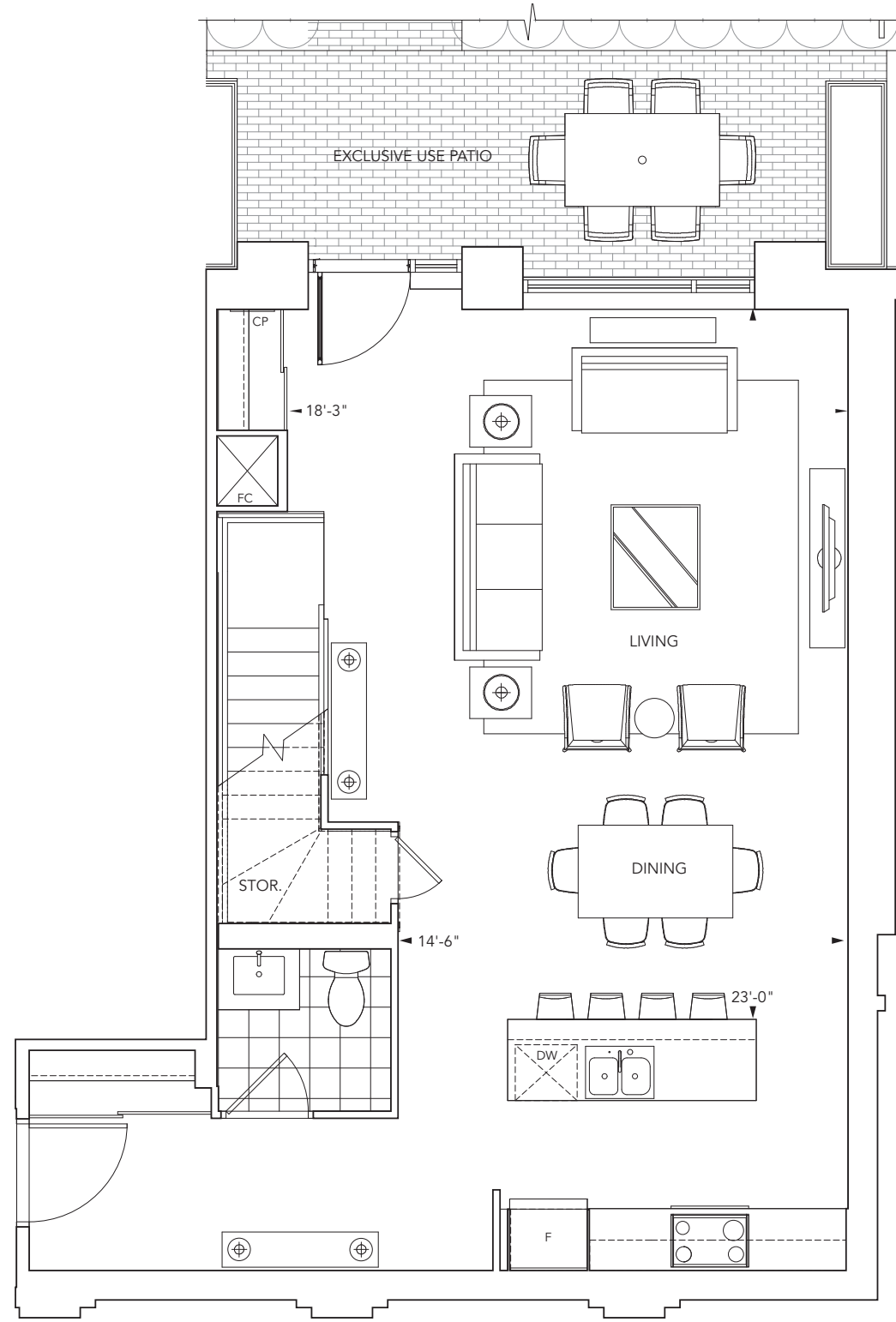
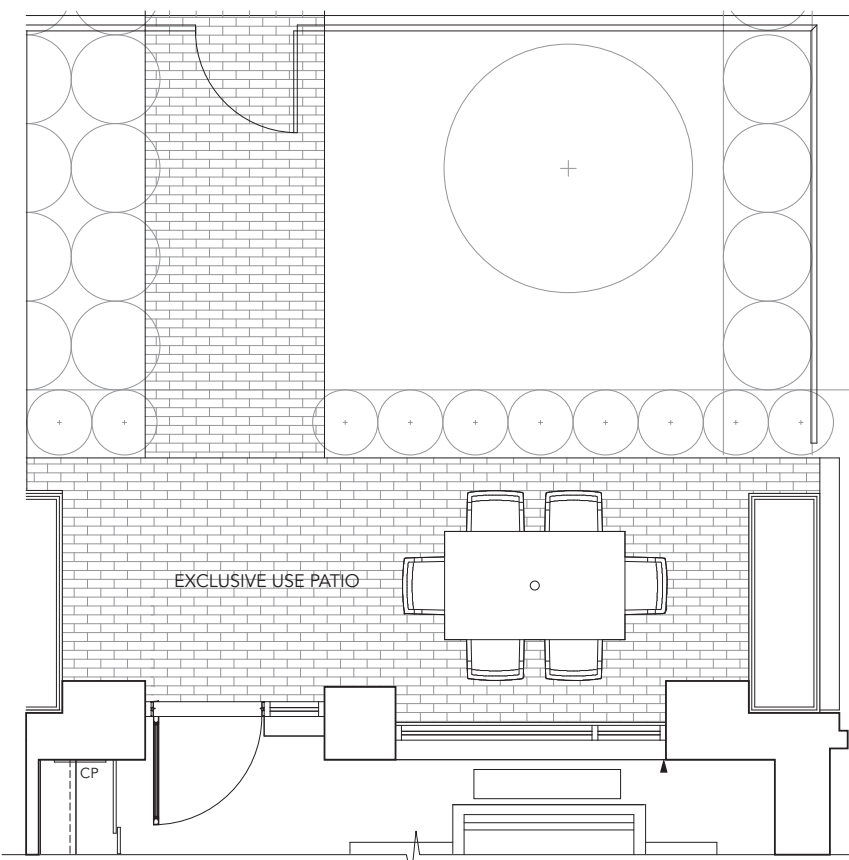
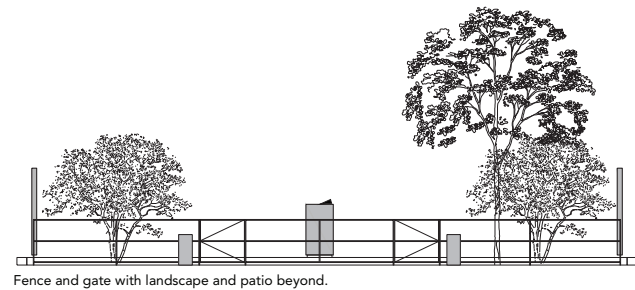
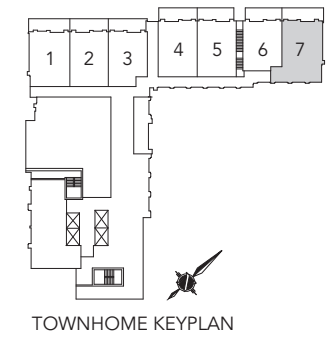


Second Floor

Fence and gate detail with landscape and patio beyond. Subject to change without notice. Illustrations are artist's concept. All dimensions are approximate and subject to normal construction variances. Dimensions may exceed the useable floor area. Sizes and specifications subject to change without notice. Furniture is displayed for illustration purposes only and does not necessarily reflect the electrical plan for the suite. Suites are sold unfurnished. Tridel® and Tridel Built For Life® are registered trademarks of Tridel and used under license agreement. ©Tridel 2015. All Rights Reserved. E.&O.E. September 2015



**TOWNHOME 7**  
 3 bedroom, 2 1/2 bathrooms, living room,  
 dining room plus patio



Fence and gate detail with landscape and patio beyond. Subject to change without notice. Illustrations are artist's concept. All dimensions are approximate and subject to normal construction variances. Dimensions may exceed the useable floor area. Sizes and specifications subject to change without notice. Furniture is displayed for illustration purposes only and does not necessarily reflect the electrical plan for the suite. Suites are sold unfurnished. Tridel® and Tridel Built For Life® are registered trademarks of Tridel and used under license agreement. ©Tridel 2015. All Rights Reserved. E.&O.E. September 2015