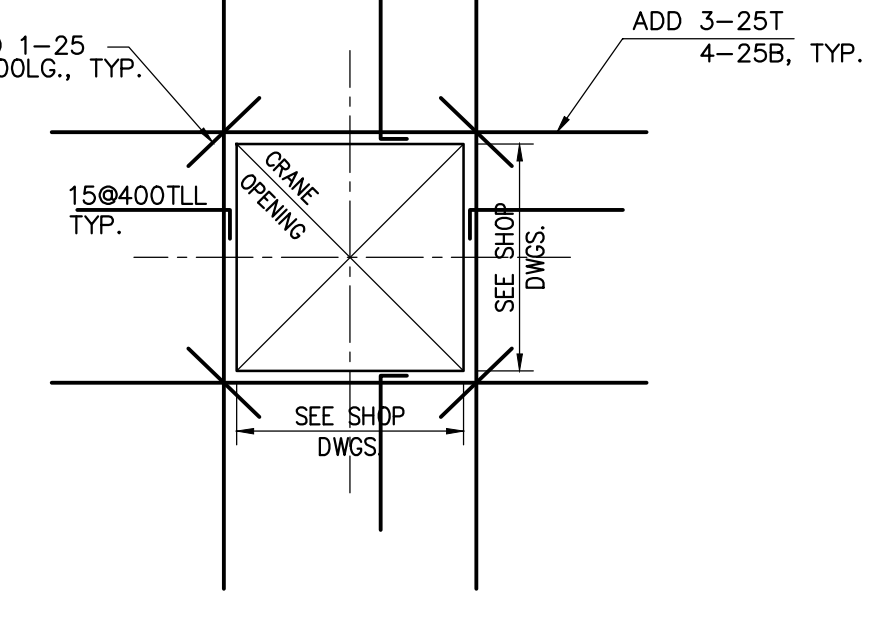


200mm TOPPING SLAB REINF. WITH 150050 TYP. PROVIDE TOoled CONSTRUCTION JOINT AT MAX. 2000mm O/C SPACING EACH WAY WITH 150050 WOOD FORMS.  
SEE ARCH. DWGS. FOR WATER PROOFING LAYER BELOW TOPPING SLAB.  
USE C-1 EXPOSURE CLASSIFICATION AND MIN. #6'S TO BE ENCASED AIR.  
SEE ARCH. DWG. FOR SLOPES AND DRAINS AND DIMENSIONS.

OVER HEAD DOOR STEEL FRAMING  
-HS 154x102x6.5 POSTS ON EACH SIDE WITH 300x12x300 CAST IN PLATE AT TOP & BOTTOM.  
-25mm SLIT CONNECTION ON TOP.  
SEE ARCH. FOR MORE DETAILS.

LOWER STEEL FRAMING  
-HS 154x102x6.5 POSTS ON EACH SIDE WITH 300x12x300 CAST IN PLATE AT TOP & BOTTOM.  
-25mm SLIT CONNECTION ON TOP.  
SEE ARCH. FOR MORE DETAILS.



**CRANE OPENING REINF.**  
FOR ADDITIONAL REINFORCING SEE TYPICAL DETAILS

**GROUND FLOOR FRAMING PLAN**

SCALE 1 : 100  
1. TOP OF ROUGH SLAB IS 0mm BELOW FINISHED FLOOR AT ELEVATION 93.60 EXCEPT AS CROSSED AND NOTED ON PLAN.  
2. FLOOR SLABS ARE DESIGNED FOR FOLLOWING LOADING CONDITIONS :

	S.I.D.	LL.
RESIDENTIAL AREAS	1.30 kPa	1.90 kPa
STAIRS & BALCONIES	0.50 kPa	4.80 kPa
LOCKERS & STORAGE	1.30 kPa	4.80 kPa
CAR PARKING & RAMPS	0.60 kPa	2.40 kPa
OFFICE AREAS	2.30 kPa	4.80 kPa
TOILETS	1.30 kPa	2.40 kPa
RETAIL	2.30 kPa	9.60 kPa
DRIVEWAYS AND SIDEWALKS OVER BASEMENTS	MIN. 8.0 kPa	14.0 kPa
DRIVEWAYS AND SIDEWALKS OVER BASEMENTS	8.0 kPa	P=54kN*
GARBAGE STORAGE	0.60 kPa	7.20 kPa

- \* APPLICABLE FOR FLOOR USED BY VEHICLES EXCEEDING 9000 kg GROSS WEIGHT.
3. CONCRETE STRENGTH AT 28 DAYS SHALL BE 35 MPa AND CONCRETE STRENGTH AT 7 DAYS SHALL BE 25 MPa OUTSIDE FOOTPRINT OF TOWER AND OR EXPOSED TO DE-ICING CHEMICALS AND SHALL BE PROPORTIONED FOR C-1 EXPOSURE CLASSIFICATION AND HAVE MIN. #6'S TO BE ENCASED AIR, WITH APPROVED CORROSION INHIBITOR ADDED AT A MINIMUM RATE OF 10.0 LITRES PER 1.0 CUBIC METRE OF CONCRETE.  
CONCRETE STRENGTH AT 28 DAYS FOR ALL PICK UP SLABS & BEAMS SHALL BE 45 MPa U/N.
4. MINIMUM YIELD STRESS FOR REINFORCING STEEL SHALL BE 400 MPa.  
5. TEMPERATURE REINFORCING FOR : 250 SLAB IS 1500400  
500 SLAB IS 1500200  
900 SLAB IS 2500275
6. NO OPENINGS LARGER THAN 300x300 ARE ALLOWED IN SLAB OTHER THAN THOSE SHOWN ON DRAWINGS.  
7. PARTITION ALLOWANCE IN RETAIL AREAS IS 2.0 kPa.  
8. SEE TYPICAL PROVISION FOR P.C. STAIR AND MD-LANDING CONSTRUCTION ON DRAWING S-502.  
9. MINIMUM COVER FOR REINFORCING STEEL IN PARKING SLAB SHALL BE 40mm FOR TOP BARS & 30mm FOR BOTTOM BARS.

**GROUND FLOOR BEAM SCHEDULE (fc' = 45MPa)**

MARK	WIDTH	DEPTH	REINFORCEMENT		STIRRUPS		REMARKS
			BOTTOM CONT.	TOP ADDED	SIZE	SPACING EACH END	
BM-1	1400	900	2-15	10-20	15	1000, 0160	ADD 2-15HEF
BM-2	1400	900	2-15	10-20	15	1000, 0160	ADD 2-15HEF
BM-3	1400	900	3-15	10-20	15	1000, 0125	ADD 2-15HEF
BM-4	1400	900	3-15	10-20	15	1000, 0125	ADD 2-15HEF
BM-5	800	900	7-35	5-20	15	10175, 0350	ADD 2-15HEF
BM-6	800	900	7-35	5-20	15	10175, 0350	ADD 2-15HEF
BM-7	1000	900	7-30	5-20	15	10150, 0300	ADD 2-15HEF
BM-8	850	500	7-25	4-20	10	10150, 0300	ADD 1-15HEF

**GROUND FLOOR BEAM SCHEDULE (fc' = 45MPa)**

MARK	WIDTH	DEPTH	REINFORCEMENT		STIRRUPS		REMARKS
			BOTTOM CONT.	TOP ADDED	SIZE	SPACING EACH END	
HB-1	1500	900	10-25	8-20	15	10200, 0400	
HB-2	2000	900	14-25	10-20	15	10200, 0400	
HB-3	2000	900	14-25	10-20	15	10200, 0400	
HB-4	2000	900	14-25	10-20	15	10200, 0400	
HB-5	2000	900	14-25	10-20	15	10200, 0400	
HB-6	2000	900	14-25	10-20	15	10200, 0400	
HB-7	2000	900	14-25	10-20	15	10200, 0400	
HB-8	2000	900	14-25	10-20	15	10200, 0400	
HB-9	2000	900	14-25	10-20	15	10200, 0400	
HB-10	2000	900	14-25	10-20	15	10200, 0400	
HB-11	2000	900	16-30	10-20	15	10120, 00245, 0350	
HB-12	2000	900	14-25	10-20	15	10200, 0400	
HB-13	2000	900	17-25	10-20	15	10200, 0400	
HB-14	2000	900	14-25	10-20	15	10200, 0400	
HB-15	3000	900	17-25	14-20	15	10200, 0400	
HB-16	3000	900	17-25	14-20	15	1075, 70150, 0400	
HB-17	3000	900	17-25	14-20	15	1060, 00120, 0400	
HB-18	3000	900	21-25	14-20	15	1085, 10070, 0400	
HB-19	3000	900	20-30	14-20	15	10115, 120230, 0400	
HB-20	3000	900	17-25	14-20	15	1055, 100105, 0400	
HB-21	3000	900	23-25	14-20	15	1070, 120140, 0400	
HB-22	3000	900	23-25	14-20	15	10120, 110245, 0400	
HB-23	3000	900	17-25	14-20	15	1070, 00140, 0400	
HB-24	3000	900	17-25	14-20	15	1050, 120100, 0350	
HB-25	3000	900	18-30	14-20	15	1065, 130135, 0400	
HB-26	3000	900	20-25	14-25	15	1095, 100185, 0350	
HB-27	3000	900	23-25	14-25	15	1075, 200150, 0350	
HB-28	3000	900	17-25	14-25	15	10120, 00245, 0350	
HB-29	3000	900	18-25	14-20	15	10140, 70235, 0400	
HB-30	3000	900	18-25	14-20	15	10200, 0400	

**GROUND FLOOR BEAM SCHEDULE (fc' = 45MPa)**

MARK	WIDTH	DEPTH	REINFORCEMENT		STIRRUPS		REMARKS
			BOTTOM CONT.	TOP ADDED	SIZE	SPACING EACH END	
HB-31	3000	900	17-25	14-20	15	10115, 00230, 0350	
HB-32	3000	900	18-25	14-20	15	10175, 0350	
HB-33	3000	900	17-25	14-20	15	10175, 0350	
HB-34	3000	900	17-30	14-20	15	1050, 170100, 0300	
HB-35	3000	900	17-25	14-20	15	10175, 0350	
HB-36	3000	900	18-30	14-30	15	1050, 170100, 0350	
HB-37	3000	900	17-25	14-30	15	10175, 0350	
HB-38	3000	900	18-25	14-30	15	1055, 170110, 0350	
HB-39	2000	900	15-25	12-20	15	10200, 0400	
HB-40	2000	900	15-25	12-20	15	10200, 0400	
HB-41	2000	900	15-25	12-20	15	1070, 100100, 0300	
HB-42	2000	900	15-30	12-20	15	10100, 00200, 0400	
HB-43	2000	900	15-30	15-25	15	10105, 00210, 0300	
HB-44	2000	900	24-35	15-25	15	(4) 1065, 0135	
HB-45	2000	900	20-35	15-25	15	(4) 1065, 140130, 0200	
HB-46	3000	900	14-30	15-25	15	(4) 1050, 12005, 0250	
HB-47	3000	900	17-25	15-20	15	1055, 100110, 0400	
HB-48	3000	900	17-25	15-20	15	1055, 100110, 0400	
HB-49	3000	900	33-35	15-20	15	1085, 100175, 0200	
HB-50	3000	900	2 LAYERS	15-20	15	1075, 170150, 0330	
HB-51	3000	900	2 LAYERS	15-20	15	1075, 170150, 0330	
HB-52	4000	900	35-30	15-20	15	1075, 170150, 0330	
HB-53	3000	900	24-35	15-20	15	10135, 00270, 0310	
HB-54	3000	900	24-35	15-20	15	10135, 00270, 0310	
HB-55	3000	900	19-35	15-20	15	10150, 0300	
HB-56	4000	900	35-30	15-20	15	10135, 00270, 0310	
HB-57	5000	900	34-35	30-25	15	(4) 1075, 150150, 0180	
HB-58	3000	900	22-30	15-20	15	10195, 00195, 0350	
HB-59	3000	900	22-25	15-20	15	10195, 00195, 0350	
HB-60	2500	900	17-35	12-20	15	10175, 0330	
HB-61	2500	900	17-25	12-20	15	10110, 00210, 0350	

FIRST FLOOR ELEV. 93.60m

no.	Issued / revised	date
1	ISSUED FOR PERMIT	2014-06-03
2	RE ISSUED FOR PERMIT	2014-07-01
3	ISSUED FOR TYPING TRACE	2014-08-27
4	CONSTRUCTION REVIEW	2014-09-01
5	RE ISSUED FOR PERMIT	2014-09-01
6	ISSUED FOR CONSTRUCTION	2014-09-18
7	ISSUED FOR PERMIT	2014-09-24
8	ISSUED FOR PERMIT	2014-09-24
9	ISSUED FOR PERMIT	2014-09-24
10	ISSUED FOR PERMIT	2014-09-24
11	ISSUED FOR PERMIT	2014-09-24