



**MCW Consultants Ltd.**

# Site Instruction

Date: March 3, 2017

207 Queen's Quay West, Suite 615  
Toronto, ON  
M5J 1A7

Phone (416) 598-2920  
Fax (416) 598-5394  
www.mcw.com

Project Name: The Residences of 10 York  
Client: Tridel  
To: Tridel  
Attention: Marius Hirboca

Project No.: 8503  
CR No.: E034  
Page No.: 1 of 2 +4 Attachment  
Office: Toronto  
From: Sunanda Perera  
Tao Li

Distribution: **Tridel:**  
Vince Mirarchi  
**Wallman Architects**  
John Harhay  
**MCW Consultants Ltd**  
Michael Hunter  
Pol Malabanan  
Al Medeiros  
Sunanda Perera  
Bill Merdzan  
File

Provide itemized labour, equipment and material costs for Work listed below. Do not proceed with any of the listed Work prior to issuance of signed Change Order.

## TITLE: Power and Data for Fitness Equipment.

### Electrical Specification:

Spec	Issued	Items
		<ul style="list-style-type: none"> <li>N/A</li> </ul>

### Electrical Drawings:

Drawing No.	Drawing Issued	Items
E2-03	Yes	<ul style="list-style-type: none"> <li>Clarification to receptacle mounting height for kitchen in management office.</li> </ul>
E2-05A	Yes	<ul style="list-style-type: none"> <li>Delete electrical combination power/LV recessed floor boxes for fitness equipment as shown.</li> <li>Add wall mounted power receptacles, TV and data outlets for fitness equipment as shown. Refer to interior design drawing for mounting height and exact location.</li> <li>Add floor mounted receptacles in juicy bar area as shown.</li> </ul>
E2-05B		<ul style="list-style-type: none"> <li>Delete electrical combination power/LV recessed floor boxes in spin room as shown.</li> <li>Add one receptacle in billiard room as shown.</li> <li>Relocate one power receptacle and add one power receptacle in theatre as shown.</li> <li>Delete TV outlet and add data outlet in theatre as shown.</li> <li>Provide power connection for ceiling project in theatre as shown.</li> <li>Add power receptacle in AV/storage room as shown.</li> <li>Add power receptacle in corridor as shown.</li> </ul>

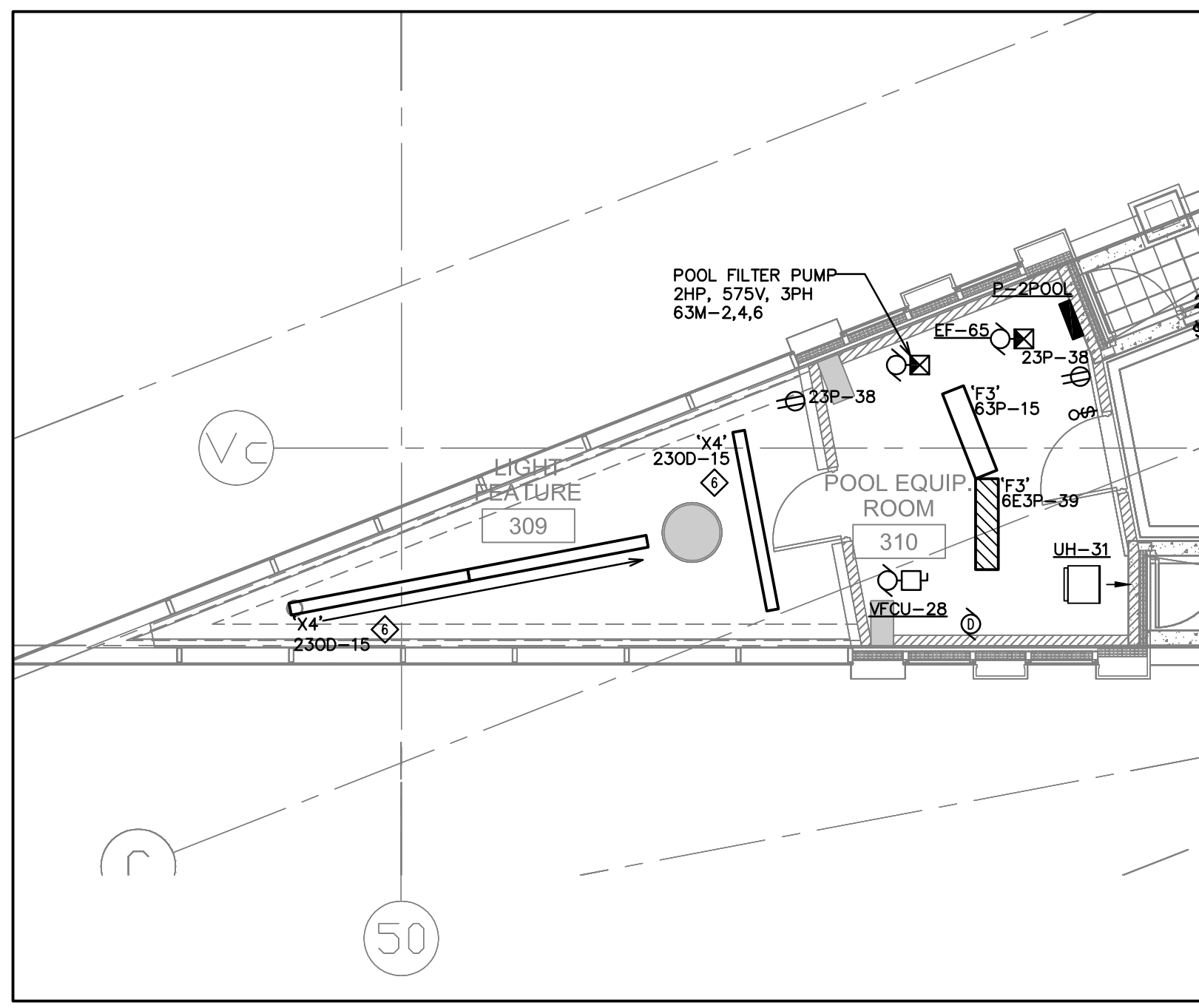
---

**M and E Drawings:**

Drawing No.	Drawing Issued	Items
		<ul style="list-style-type: none"><li data-bbox="699 342 792 373">• N/A</li></ul>

**Reason for Revision:** Design Coordination with ID-SI#12/Owner Request.

**End of SI-E034**



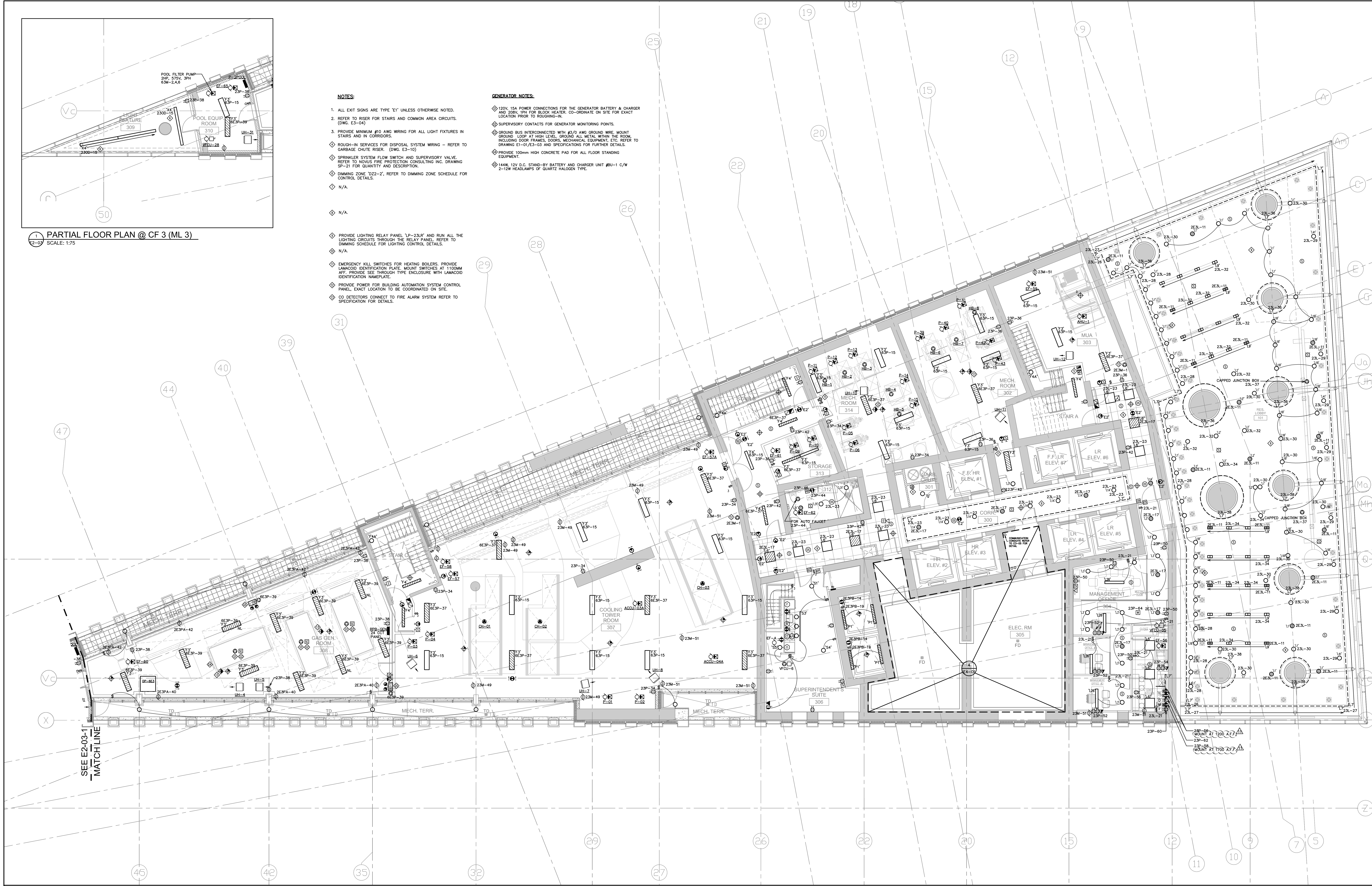
1 PARTIAL FLOOR PLAN @ CF 3 (ML 3)  
SCALE: 1:75

**NOTES:**

- ALL EXIT SIGNS ARE TYPE 'E1' UNLESS OTHERWISE NOTED.
- REFER TO RISER FOR STAIRS AND COMMON AREA CIRCUITS. (DWG. E3-04)
- PROVIDE MINIMUM #10 AND WIRING FOR ALL LIGHT FIXTURES IN STAIRS AND IN CORRIDORS.
- ROUGH-IN SERVICES FOR DISPOSAL SYSTEM WIRING - REFER TO GARBAGE CHUTE RISER. (DWG. E3-10)
- SPRINKLER SYSTEM FLOW SWITCH AND SUPERVISORY VALVE. REFER TO NOVUS FIRE PROTECTION CONSULTING INC. DRAWING SP-21 FOR QUANTITY AND DESCRIPTION.
- DIMMING ZONE 'DZ2-2'; REFER TO DIMMING ZONE SCHEDULE FOR CONTROL DETAILS.
- N/A.
- N/A.
- PROVIDE LIGHTING RELAY PANEL 'LP-23/R' AND RUN ALL THE LIGHTING CIRCUITS THROUGH THE RELAY PANEL. REFER TO DIMMING SCHEDULE FOR LIGHTING CONTROL DETAILS.
- N/A.
- EMERGENCY KILL SWITCHES FOR HEATING BOILERS. PROVIDE LAMACOD IDENTIFICATION PLATE. MOUNT SWITCHES AT 1100MM AFF. PROVIDE SEE THROUGH TYPE ENCLOSURE WITH LAMACOD IDENTIFICATION NAMEPLATE.
- PROVIDE POWER FOR BUILDING AUTOMATION SYSTEM CONTROL PANEL. EXACT LOCATION TO BE COORDINATED ON SITE.
- CO DETECTORS CONNECT TO FIRE ALARM SYSTEM REFER TO SPECIFICATION FOR DETAILS.

**GENERATOR NOTES:**

- 120V, 15A POWER CONNECTIONS FOR THE GENERATOR BATTERY & CHARGER AND 208V, 15A FOR BLOCK HEATER. CO-ORDINATE ON SITE FOR EXACT LOCATION PRIOR TO ROUGHING-IN.
- SUPERVISORY CONTACTS FOR GENERATOR MONITORING POINTS.
- GROUND BUS INTERCONNECTED WITH #3/0 AWG GROUND WIRE MOUNT GROUND LOOP AT HIGH LEVEL. GROUND ALL METAL WITHIN THE ROOM INCLUDING DOOR FRAMES, DOORS, MECHANICAL EQUIPMENT, ETC. REFER TO DRAWING E1-01/E3-03 AND SPECIFICATIONS FOR FURTHER DETAILS.
- PROVIDE 100mm HIGH CONCRETE PAD FOR ALL FLOOR STANDING EQUIPMENT.
- 144W, 12V D.C. STAND-BY BATTERY AND CHARGER UNIT #BU-1 C/W 2-12W HEADLAMPS OF QUARTZ HALOGEN TYPE.



SEE E2-03-1  
MATCH LINE

**MCW**  
**MCW Consultants Ltd.**  
 207 Queen's Quay West, Suite 615, Toronto, ON, M5J 1A7  
 E-Mail: mcw\_tor@mcw.com www.mcw.com  
 Tel: 416-598-2920 Fax: 416-598-5034  
 Toronto Vancouver Winnipeg Moncton Ottawa Halifax  
 Dauphin Kelowna Trail Saint John



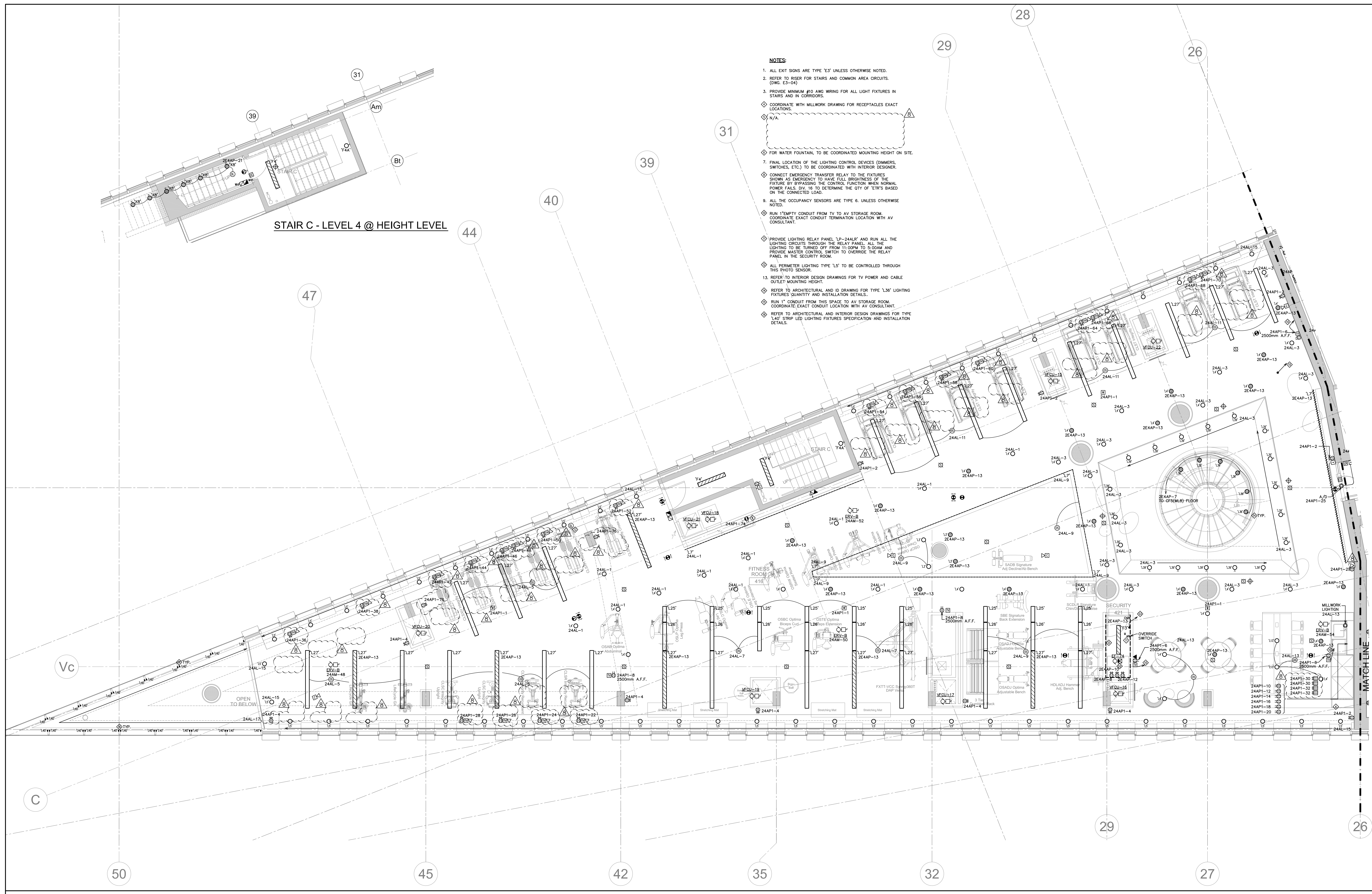
No.	Issuance	Date	No.	Issuance	Date
1	ISSUED FOR BUILDING PERMIT	2013.06.10			
2	ISSUED FOR ME. TRACKER	2013.07.03			
3	ISSUED FOR PER. CITY COMMENTS	2014.07.30			
4	ISSUED FOR PER. CITY COMMENTS	2014.08.18			
5	ISSUED FOR PER. CITY COMMENTS	2015.05.22			
6	ISSUED FOR ABOVE GRADE CONSTRUCTION	2015.09.08			
7	ISSUED FOR SA-E001	2016.02.09			
8	ISSUED FOR SA-E002	2016.11.11			
9	ISSUED FOR SA-E003	2016.12.01			
10	ISSUED FOR SA-E009P2	2017.01.17			
11	ISSUED FOR SA-E024	2017.03.03			

**ISSUANCE**

**WALLMAN ARCHITECTS**  
 30 Duncan Street, Suite 202  
 Toronto, Ontario M5V 2C3  
 T: 416 340 1870  
 F: 416 340 1871  
 info@wallmanarchitects.com

**GENERAL INFORMATION**

**TEN YORK**  
 RISING ABOVE IT ALL  
 15 YORK STREET  
 TORONTO, ONTARIO  
**TRIDEL**  
 4800 DUFFERIN STREET, TORONTO, ONTARIO, M3H 5S9  
 1416.987.3344 1416.987.5586  
**CONSTRUCTION FLOOR 3**  
**MUNICIPAL LEVEL 3**  
**ELECTRICAL**  
 15-14 project number  
 March 15, 2013 date  
 1:75 scale  
 T.L. drawn by  
 E2-03 sheet



**STAIR C - LEVEL 4 @ HEIGHT LEVEL**

- NOTES:**
1. ALL EXIT SIGNS ARE TYPE 'E3' UNLESS OTHERWISE NOTED.
  2. REFER TO RISER FOR STAIRS AND COMMON AREA CIRCUITS. (DWG. E3-04)
  3. PROVIDE MINIMUM #10 AWG WIRING FOR ALL LIGHT FIXTURES IN STAIRS AND IN CORRIDORS.
  4. COORDINATE WITH MILLWORK DRAWING FOR RECEPTACLES EXACT LOCATIONS.
  5. N/A.
  6. FOR WATER FOUNTAIN, TO BE COORDINATED MOUNTING HEIGHT ON SITE.
  7. FINAL LOCATION OF THE LIGHTING CONTROL DEVICES (DIMMERS, SWITCHES, ETC.) TO BE COORDINATED WITH INTERIOR DESIGNER.
  8. CONNECT EMERGENCY TRANSFER RELAY TO THE FIXTURES SHOWN AS EMERGENCY TO HAVE FULL BRIGHTNESS OF THE FIXTURE BY BYPASSING THE CONTROL FUNCTION WHEN NORMAL POWER FAILS. DIV. 16 TO DETERMINE THE QTY OF 'ETRS' BASED ON THE CONNECTED LOAD.
  9. ALL THE OCCUPANCY SENSORS ARE TYPE 6. UNLESS OTHERWISE NOTED.
  10. RUN 1" EMPTY CONDUIT FROM TV TO AV STORAGE ROOM. COORDINATE EXACT CONDUIT TERMINATION LOCATION WITH AV CONSULTANT.
  11. PROVIDE LIGHTING RELAY PANEL 'LP-24ALR' AND RUN ALL THE LIGHTING CIRCUITS THROUGH THE RELAY PANEL. ALL THE LIGHTING TO BE TURNED OFF FROM 11:00PM TO 5:00AM AND PROVIDE MASTER CONTROL SWITCH TO OVERRIDE THE RELAY PANEL IN THE SECURITY ROOM.
  12. ALL PERIMETER LIGHTING TYPE 'L5' TO BE CONTROLLED THROUGH THIS PHOTO SENSOR.
  13. REFER TO INTERIOR DESIGN DRAWINGS FOR TV POWER AND CABLE OUTLET MOUNTING HEIGHT.
  14. REFER TO ARCHITECTURAL AND ID DRAWING FOR TYPE 'L36' LIGHTING FIXTURES QUANTITY AND INSTALLATION DETAILS.
  15. RUN 1" CONDUIT FROM THIS SPACE TO AV STORAGE ROOM. COORDINATE EXACT CONDUIT LOCATION WITH AV CONSULTANT.
  16. REFER TO ARCHITECTURAL AND INTERIOR DESIGN DRAWINGS FOR TYPE 'L40' STRIP LED LIGHTING FIXTURES SPECIFICATION AND INSTALLATION DETAILS.

**MCW Consultants Ltd.**  
 207 Queen's Quay West, Suite 615, Toronto, ON, M5J 1A7  
 E-Mail: mcw\_tor@mcw.com www.mcw.com  
 Tel: 416-598-2920 Fax: 416-598-5094  
 Toronto Vancouver Winnipeg Moncton Ottawa Halifax  
 Dauphin Kelowna Trail Saint John



No.	Revision	Date	No.	Revision	Date
1	ISSUED FOR BUILDING PERMIT	2013.06.10			
2	ISSUED FOR ME TRAKER	2013.03.03			
3	ISSUED FOR PERA CITY COMMENTS	2014.07.30			
4	ISSUED FOR SE-6005	2015.05.22			
5	ISSUED FOR ABOVE GRADE CONSTRUCTION	2015.06.08			
6	ISSUED FOR SE-6027	2015.12.14			
7	ISSUED FOR SE-6023	2016.11.11			
8	ISSUED FOR SE-6034	2017.03.03			

**TEN YORK**  
 RISING ABOVE IT ALL  
 10 YORK STREET  
 TORONTO, ONTARIO

**TRIDEL**  
 4800 DUFFERIN STREET, TORONTO, ONTARIO, M3H 5S9  
 1416.967.3344 1416.967.5586

**WALLMAN ARCHITECTS**  
 30 Duncan Street, Suite 202  
 Toronto, Ontario M5V 2C3  
 T 416 340 1870  
 F 416 340 1871  
 info@wallmanarchitects.com

CONSTRUCTION FLOOR 4  
 MUNICIPAL LEVEL 4 - WEST  
 ELECTRICAL

E2-05A

ISSUANCE

GENERAL INFORMATION



**SECURITY ROOM NOTES:**

- PLYWOOD BACKBOARD (REFER TO SPECIFICATIONS). MOUNT PLYWOOD FROM FLOOR TO 2.4M A.F.F. TO TOP OF PLYWOOD.
- RECEPTACLES EXACT LOCATION TO BE CONFIRMED BY SECURITY INSTALLER.
- 1-85/0 IN 60mm FWC TIED TO MAIN GROUNDING BAR IN MAIN ELECTRICAL ROOM.

**NOTES:**

- ALL EXIT SIGNS ARE TYPE 'E3' UNLESS OTHERWISE NOTED.
- REFER TO RISER FOR STAIRS AND COMMON AREA CIRCUITS. (DWG. E3-04)
- PROVIDE MINIMUM #10 AWG WIRING FOR ALL LIGHT FIXTURES IN STAIRS AND IN CORRIDORS.
- ROUGH-IN SERVICES FOR DISPOSAL SYSTEM WIRING - REFER TO GARbage CHUTE RISER. (DWG. E3-10)
- SPRINKLER SYSTEM FLOW SWITCH AND SUPERVISORY VALVE. REFER TO MCKENZIE FIRE PROTECTION CONSULTING INC. DRAWING SP-21 FOR QUANTITY AND DESCRIPTION.
- 20mm PLYWOOD BACKBOARD 2400mm HIGH ALL AROUND ROOM.
- FINAL LOCATION OF THE LIGHTING CONTROL DEVICES (DIMMERS, SWITCHES, ETC.) TO BE COORDINATED WITH INTERIOR DESIGNER.
- CONNECT EMERGENCY TRANSFER RELAY TO THE FIXTURES SHOWN AS EMERGENCY TO HAVE FULL BRIGHTNESS OF THE FIXTURE BY BYPASSING THE CONTROL FUNCTION WHEN NORMAL POWER FAILS. DIV. 16 TO DETERMINE THE QTY OF ETR'S BASED ON THE CONNECTED LOAD.
- ALL THE OCCUPANCY SENSORS ARE TYPE 6. UNLESS OTHERWISE NOTED.
- RUN 1" EMPTY CONDUIT FROM TV TO AV STORAGE ROOM. COORDINATE EXACT CONDUIT TERMINATION LOCATION WITH AV CONSULTANT.
- PROVIDE LIGHTING RELAY PANEL 'LP-24ALR' AND RUN ALL THE LIGHTING CIRCUITS THROUGH THE RELAY PANEL. ALL THE LIGHTING TO BE TURNED OFF FROM 11:00PM TO 5:00AM AND PROVIDE MASTER CONTROL SWITCH IN SECURITY ROOM TO OVERRIDE THE RELAY PANEL IN THE ELECTRICAL CLOSE.
- N/A.
- QUAD OF RECEPTACLE REFER TO ID DRAWINGS FOR MOUNTING HEIGHT AND INSTALLATION DETAIL.
- FOR JUICE BAR EQUIPMENT. EXACT LOCATION AND MOUNTING HEIGHT TO BE COORDINATED ON SITE.
- REFER TO INTERIOR DESIGN DRAWINGS FOR TV POWER AND CABLE OUTLET MOUNTING HEIGHT.
- TYPE 'L12' CONTINUOUS CONCEALED LED LIGHTING ABOVE CEILING AND WALL REFER TO INTERIOR DESIGN DRAWING FOR INSTALLATION DETAIL.
- RUN 1" EMPTY CONDUIT FROM THIS SPACE TO AV STORAGE ROOM. COORDINATE EXACT CONDUIT TERMINATION LOCATION WITH AV CONSULTANT.
- PROVIDE AMP SENSOR AND REFER TO DETAIL 3/E3-02 FOR EXHAUST FAN AMP SENSOR FAN CONTROL.
- LIGHT FIXTURE TYPE 'L2' COMES WITH 0-10V DIMMING DRIVER IN THIS ROOM. PROVIDE WATSTOPPER DIMMING ROOM CONTROLLER FOR THE TYPE 'L2' FIXTURE CIRCUIT AND MOUNT IN THE CEILING SPACE. DIMMER SWITCH SHALL BE 1/8W-101. CONNECT OCCUPANCY SENSOR TO THIS LOCAL LIGHTING CONTROLLER.



No.	Issuance	Date	No.	Issuance	Date
1	ISSUED FOR BUILDING PERMIT	2013.06.10			
2	ISSUED FOR ME TRAKER	2014.03.03			
3	ISSUED FOR PERA CITY COMMENTS	2014.07.30			
4	ISSUED FOR SE-6001	2015.02.22			
5	ISSUED FOR ABOVE GRADE CONSTRUCTION	2015.06.08			
6	ISSUED FOR SE-6017	2015.12.14			
7	ISSUED FOR SE-6018	2016.11.07			
8	ISSUED FOR SE-6023	2016.11.11			
9	ISSUED FOR SE-6026	2017.03.03			

ISSUANCE

**TENYORK**  
 RISING ABOVE IT ALL  
 10 YORK STREET  
 TORONTO, ONTARIO  
**TRIDEL**  
 4800 DUFFERIN STREET, TORONTO, ONTARIO, M3H 5S9  
 1416.967.3344 1416.967.5586  
 CONSTRUCTION FLOOR 4  
 MUNICIPAL LEVEL 4 - EAST  
 ELECTRICAL

**WALLMAN ARCHITECTS**  
 30 Duncan Street, Suite 202  
 Toronto, Ontario M5V 2C3  
 t 416 340 1870  
 f 416 340 1871  
 info@wallmanarchitects.com

TS-14	project number
March 15, 2013	048
1:50	SCALE
T.L.	drawn by
	checked

E2-05B

GENERAL INFORMATION