



MCW Consultants Ltd.

Site Instruction

Date: April 17, 2017

207 Queen's Quay West, Suite 615
Toronto, ON
M5J 1A7

Phone (416) 598-2920
Fax (416) 598-5394
www.mcw.com

Project Name: The Residences of 10 York
Client: Tridel
To: Tridel
Attention: Marius Hirboca

Project No.: 8503
SI No.: M 036
Page No.: 1 of 1
Office: Toronto
From: Pol Malabanan

Distribution: **Tridel:**
Vince Mirarchi
Wallman Architects
Sarah Davie
MCW Consultants Ltd
Michael Hunter
Pol Malabanan
Al Medeiros
Sunanda Perera

Provide itemized labour, equipment and material costs for Work listed below. Do not proceed with any of the listed Work prior to issuance of signed Change Order.

Title: Metering Updates

Mechanical Drawings:

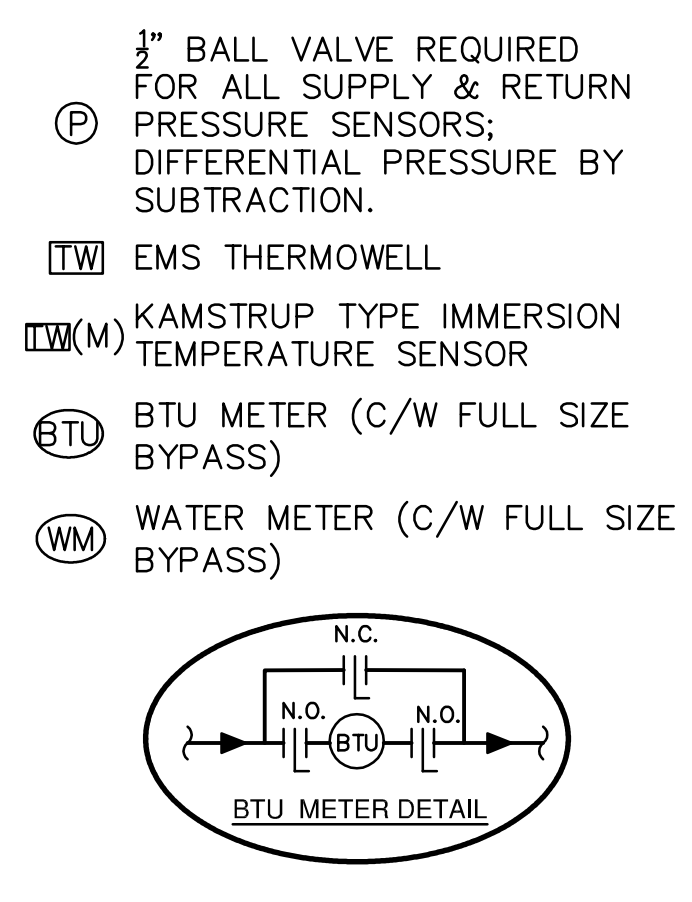
| Drawing # | Issued | Items |
|----------------------------|--------|---|
| M3-02A M3-02C | Yes | <ul style="list-style-type: none"> Identified BTU meter numbers and relocated temperature sensor as shown. |
| M3-03A | Yes | <ul style="list-style-type: none"> Identified BTU meter numbers as shown. |
| M3-04A M3-04B M3-04C | Yes | <ul style="list-style-type: none"> Relocated and identified water meter numbers as shown. |
| M3-05D | Yes | <ul style="list-style-type: none"> Identified water meter numbers as shown. |
| M3-08 | Yes | <ul style="list-style-type: none"> Identified gas meter numbers as shown. |

ME Schedules: N/A

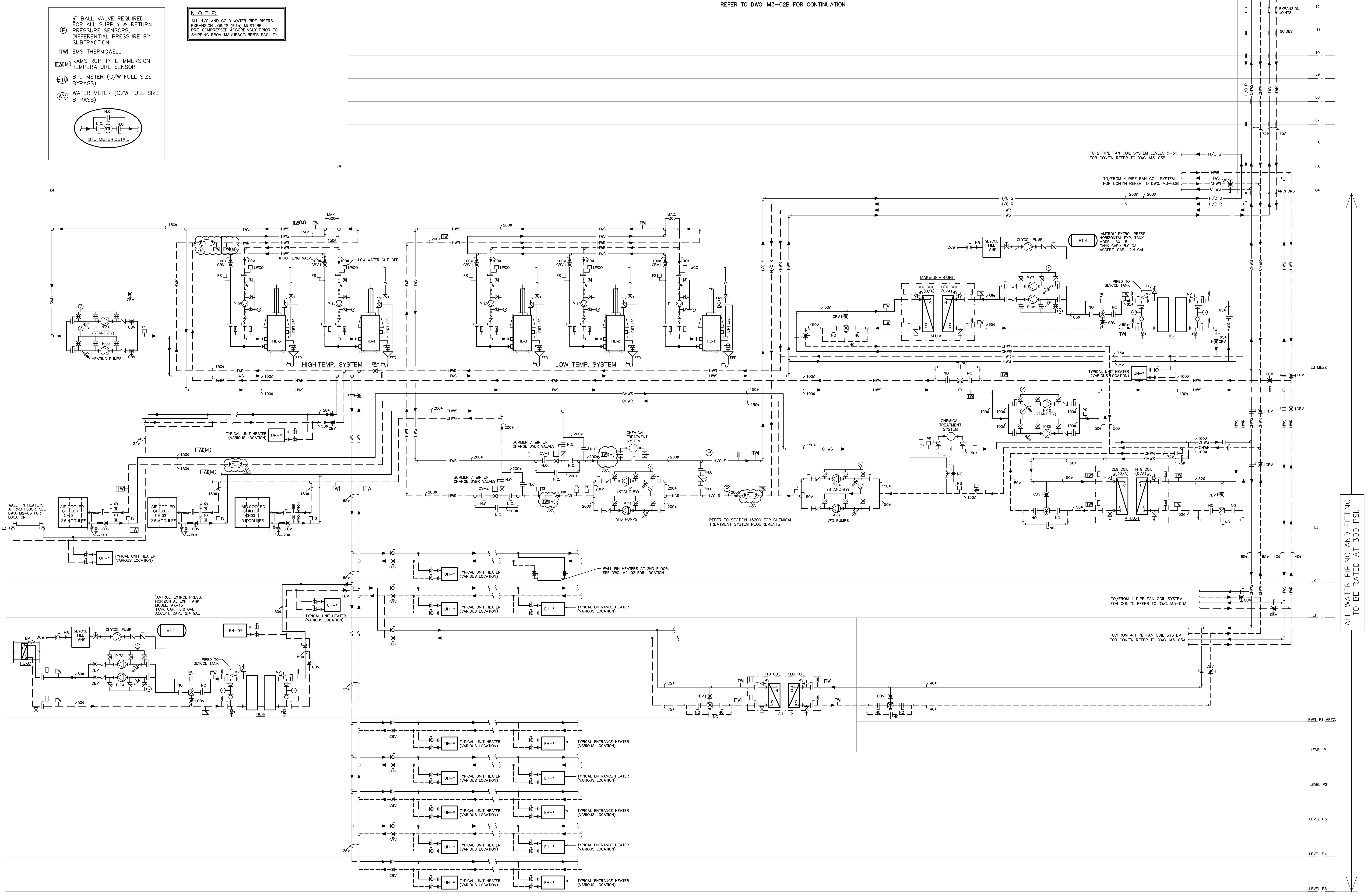
| Drawing # | Issued | Items |
|-----------|--------|---|
| N/A | | <ul style="list-style-type: none"> N/A |

Reason for change: To comply with Energy Consultant (**Provident**) recommendation.

End of SI-M036



NOTE:
ALL H/C AND COLD WATER PIPE RISERS EXPANSION JOINTS (EJ) MUST BE PRE-COMPRESSED ACCORDINGLY PRIOR TO SHIPPING FROM MANUFACTURER'S FACILITY.



| No. | Issuance | Date | No. | Issuance | Date |
|-----|---|------------|-----|----------|------|
| 1 | ISSUED FOR BUILDING PERMIT | 2013.06.10 | | | |
| 2 | ISSUED FOR ME TENDER | 2014.03.03 | | | |
| 3 | ISSUED FOR POST TENDER ADDENDUM No. 001 | 2014.05.23 | | | |
| 4 | ISSUED FOR POST TENDER ADDENDUM No. 002(R1) | 2014.07.24 | | | |
| 5 | ISSUED FOR PER CITY COMMENTS | 2014.07.30 | | | |
| 6 | ISSUED FOR CR # M004 | 2015.06.02 | | | |
| 7 | ISSUED FOR ABOVE GRADE CONSTRUCTION | 2016.08.14 | | | |
| 8 | ISSUED FOR S.I. M008 | 2017.04.17 | | | |

MCW Consultants Ltd.
 207 Queen's Quay West, Suite 615, Toronto, ON, M5J 1A7
 E-Mail: mcw_tor@mcw.com www.mcw.com
 Tel: 416-598-2920 Fax: 416-598-5044
 Toronto Vancouver Winnipeg Moncton Ottawa Halifax
 Dauphin Kelowna Trail Saint John

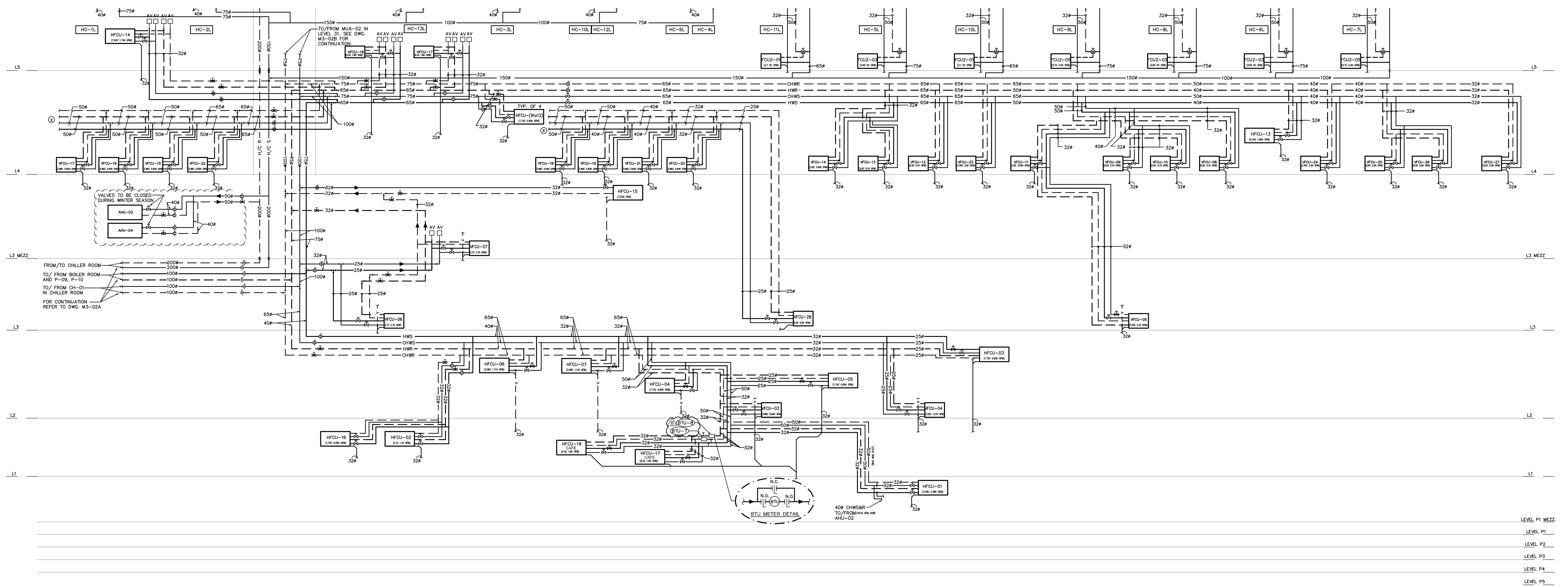


TENYORK
 RISING ABOVE IT ALL
 10 YORK STREET
 TORONTO, ONTARIO

 4800 DUFFERIN STREET, TORONTO, ONTARIO, M3H 5S9
 1416.987.3344 1416.987.5986

WALLMAN ARCHITECTS
 30 Duncan Street, Suite 202
 Toronto, Ontario M5V 2C3
 t 416 340 1870
 f 416 340 1871
 info@wallmanarchitects.com

15-14 project number
 March 15, 2013 date
 N.T.S. scale
 drawing title
M3-02A drawing number



MCW
MCW Consultants Ltd.
 207 Queen's Quay West, Suite 615, Toronto, ON, M5J 1A7
 E-Mail: mcw_tor@mcw.com www.mcw.com
 Tel: 416-598-2920 Fax: 416-598-5034
 Toronto Vancouver Winnipeg Moncton Ottawa Halifax
 Dauphin Kelowna Trail Saint John



| No. | Issuance | Date | No. | Issuance | Date |
|-----|---|------------|-----|----------|------|
| 1 | ISSUED FOR BUILDING PERMIT | 2013.06.10 | | | |
| 2 | ISSUED FOR ME TRACKER | 2014.03.03 | | | |
| 3 | ISSUED FOR POST TENDER ADDENDUM No. 001 | 2014.05.23 | | | |
| 4 | ISSUED FOR PER CITY COMMENTS | 2014.07.20 | | | |
| 5 | ISSUED FOR S.I. M011 | 2015.08.14 | | | |
| 6 | ISSUED FOR ABOVE GRADE CONSTRUCTION | 2015.09.14 | | | |
| 7 | ISSUED FOR S.I. M036 | 2016.07.29 | | | |
| 8 | ISSUED FOR S.I. M036 | 2017.04.17 | | | |

WALLMAN ARCHITECTS
 30 Duncan Street, Suite 202
 Toronto, Ontario M5V 2C3
 T 416 340 1870
 F 416 340 1871
 info@wallmanarchitects.com

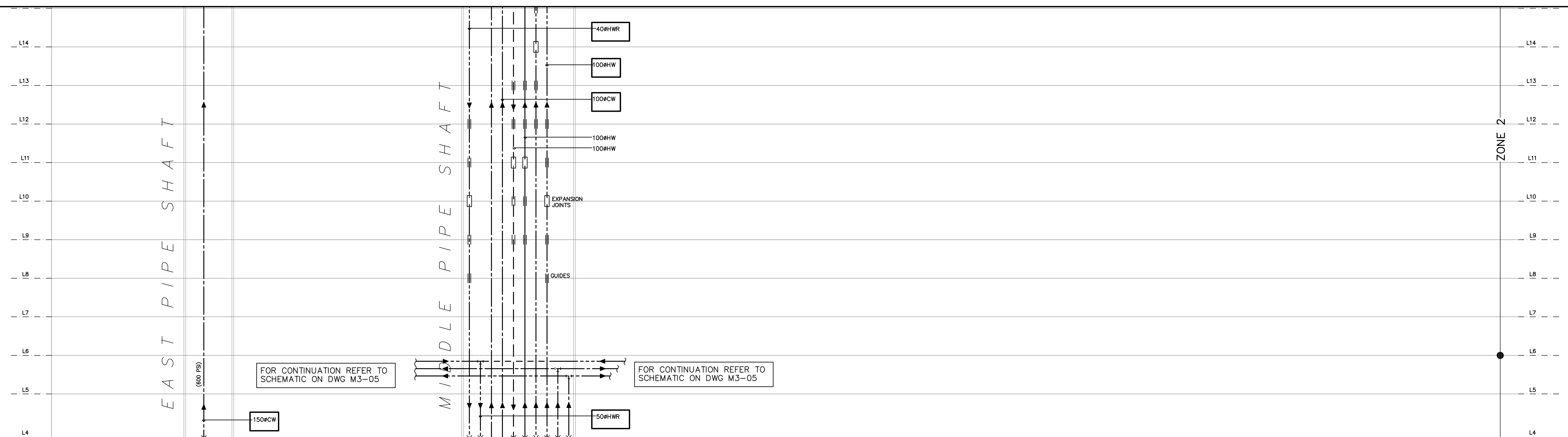
TEN YORK
 RISING ABOVE IT ALL
 10 YORK STREET
 TORONTO, ONTARIO
TRIDEL
 4800 DUFFERIN STREET, TORONTO, ONTARIO, M3H 5S9
 1 416 967 3344 1 416 967 5586

FAN COIL RISER DIAGRAM # 1

15-14 project number
 March 15, 2013 date
 N.T.S. scale
 - drawn by
 - checked by
M3-03A drawing title

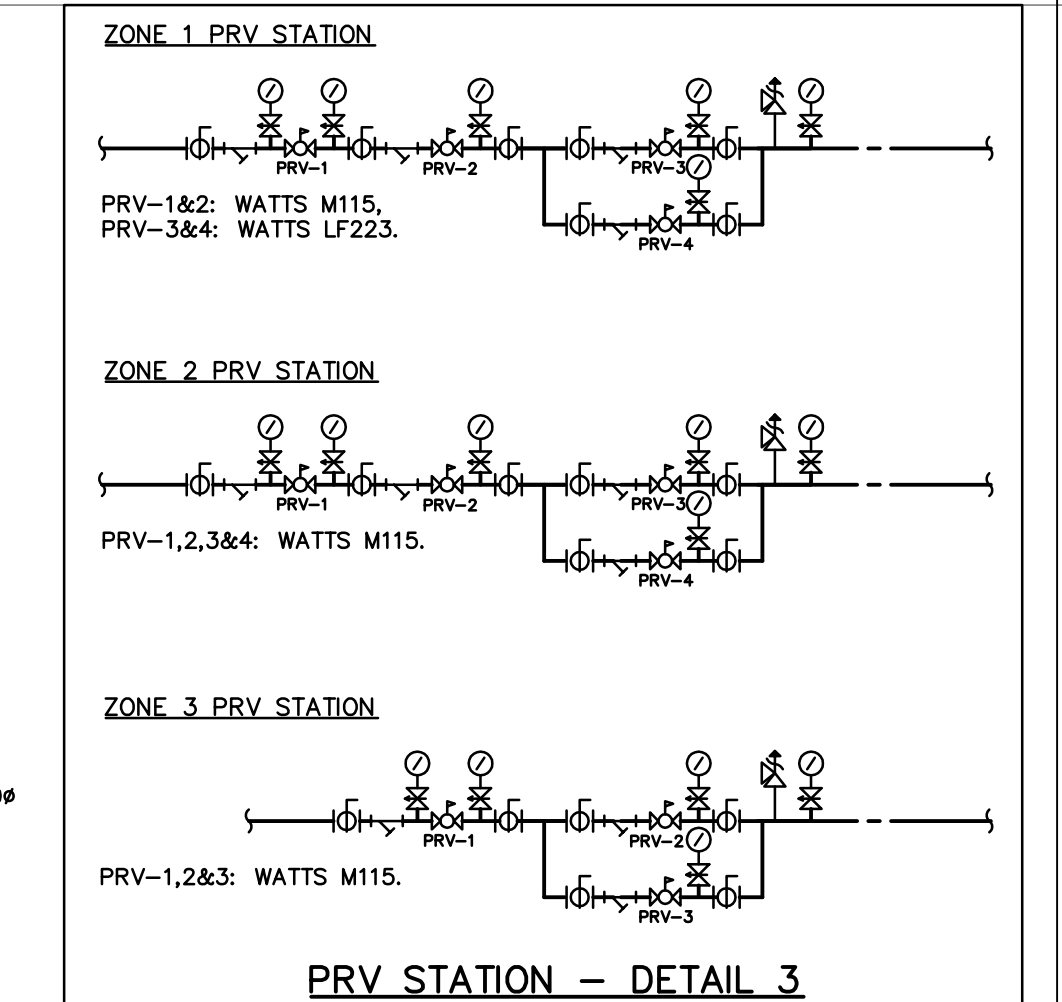
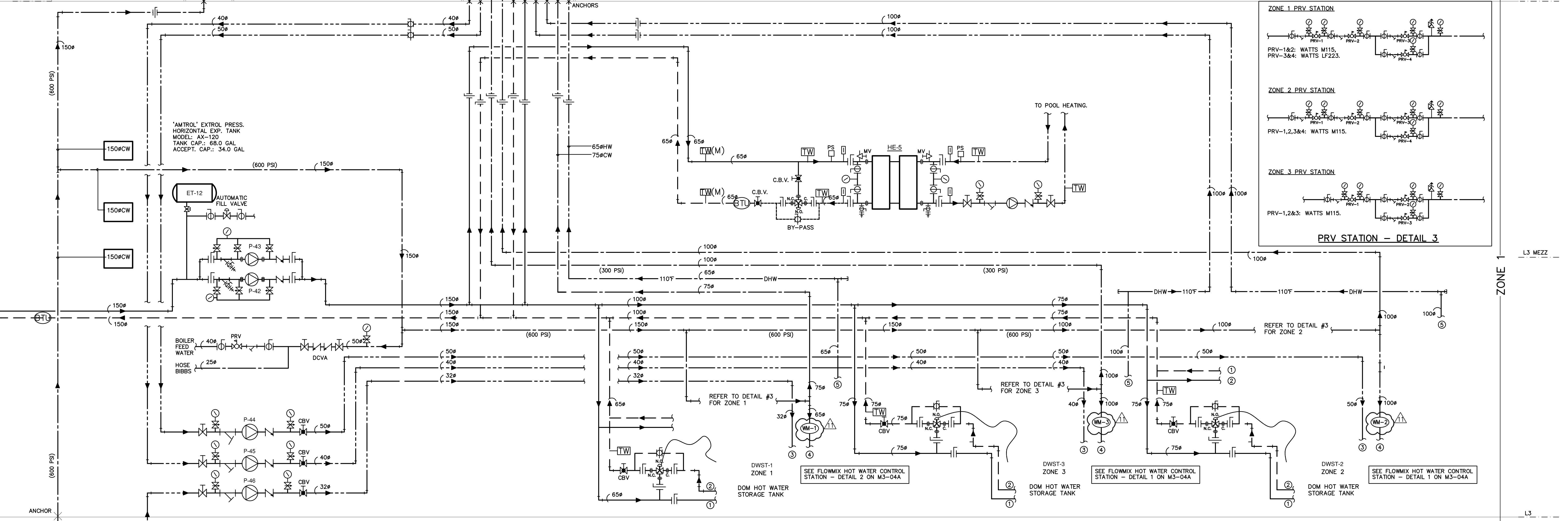
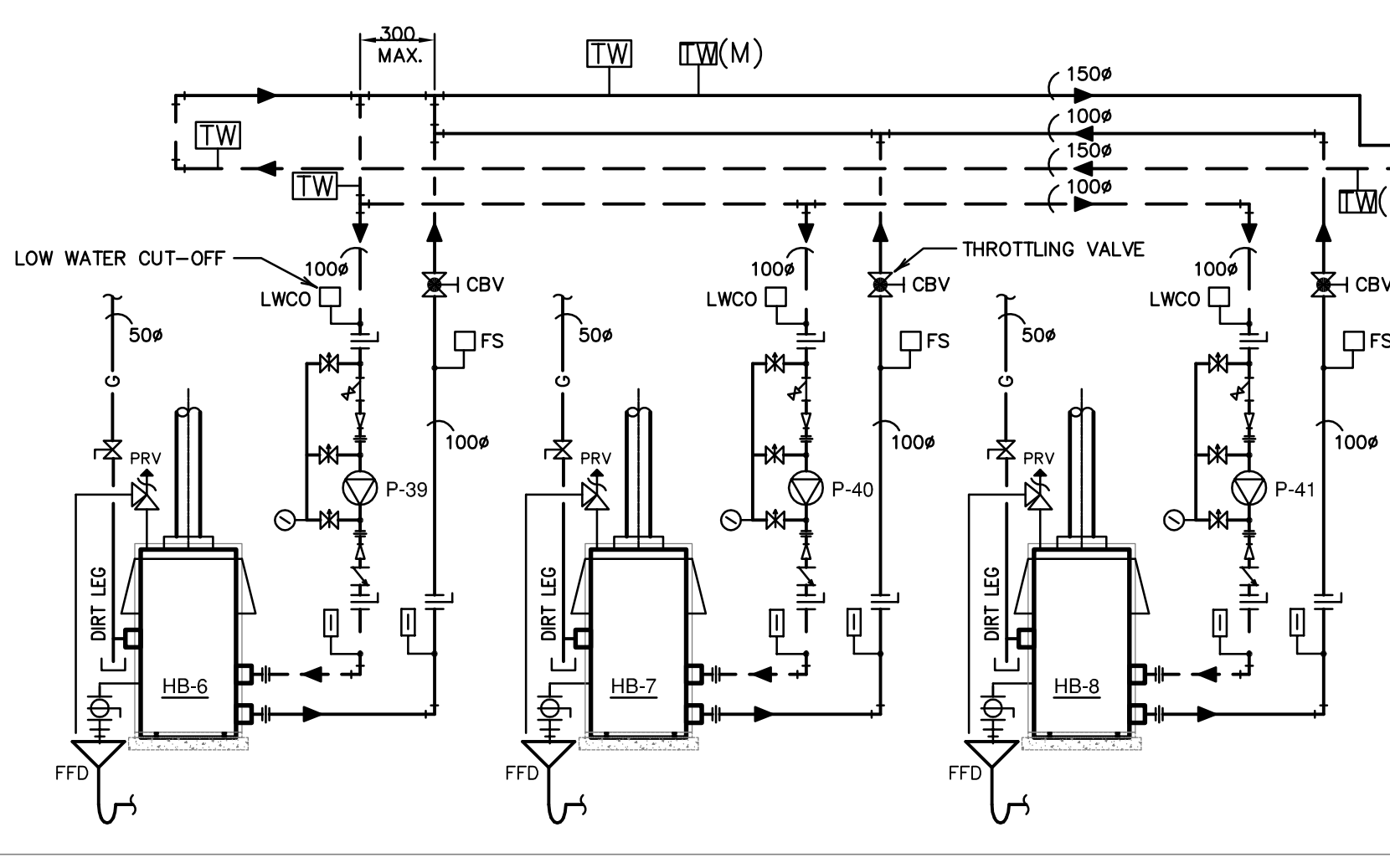
ISSUANCE

GENERAL INFORMATION



- 1" BALL VALVE REQUIRED FOR ALL SUPPLY & RETURN PRESSURE SENSORS; DIFFERENTIAL PRESSURE BY SUBTRACTION.
- EMS THERMOWELL
- KAMSTRUP TYPE IMMERSION TEMPERATURE SENSOR
- BTU METER (C/W FULL SIZE BYPASS)
- WATER METER (C/W FULL SIZE BYPASS)

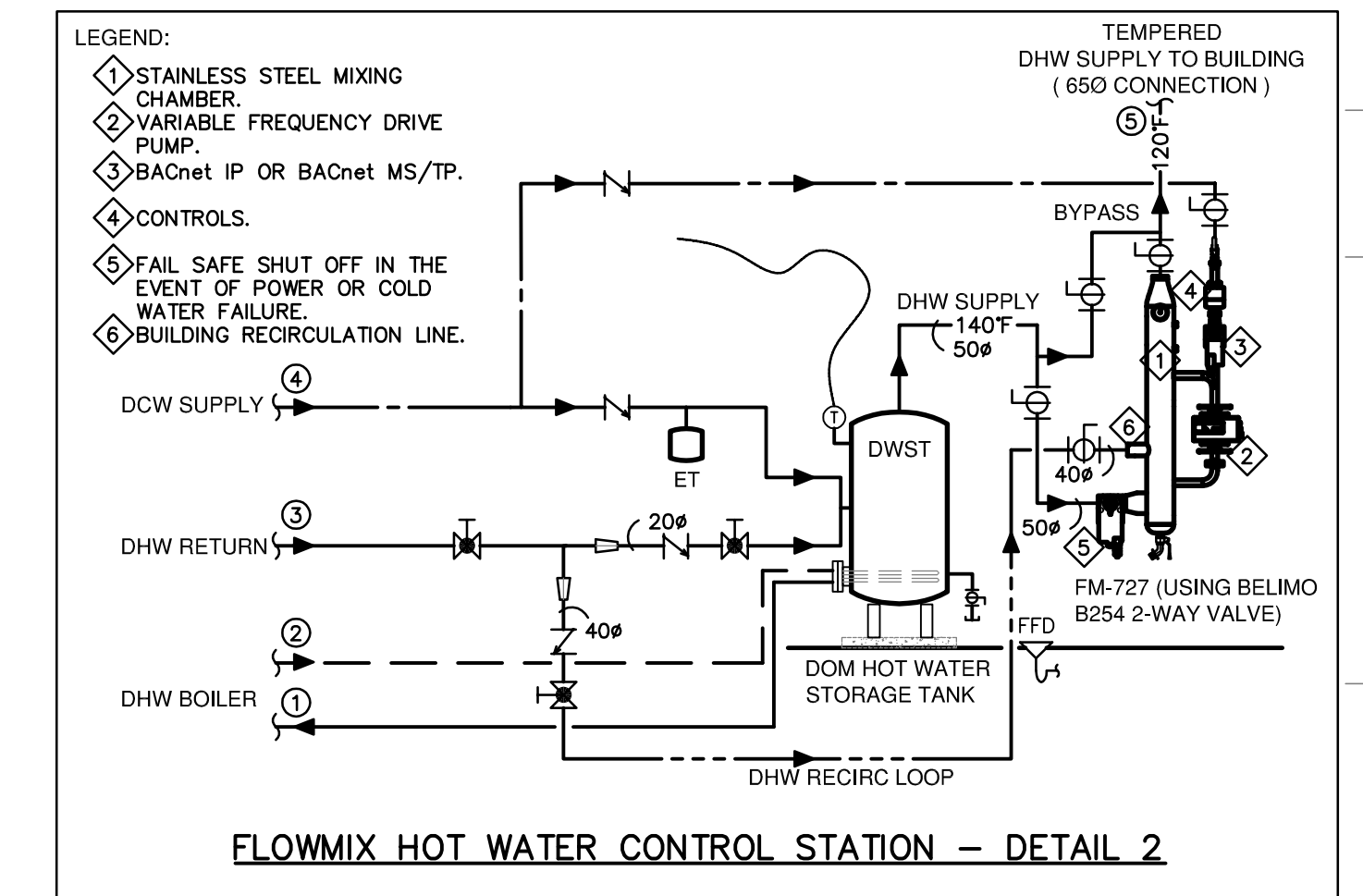
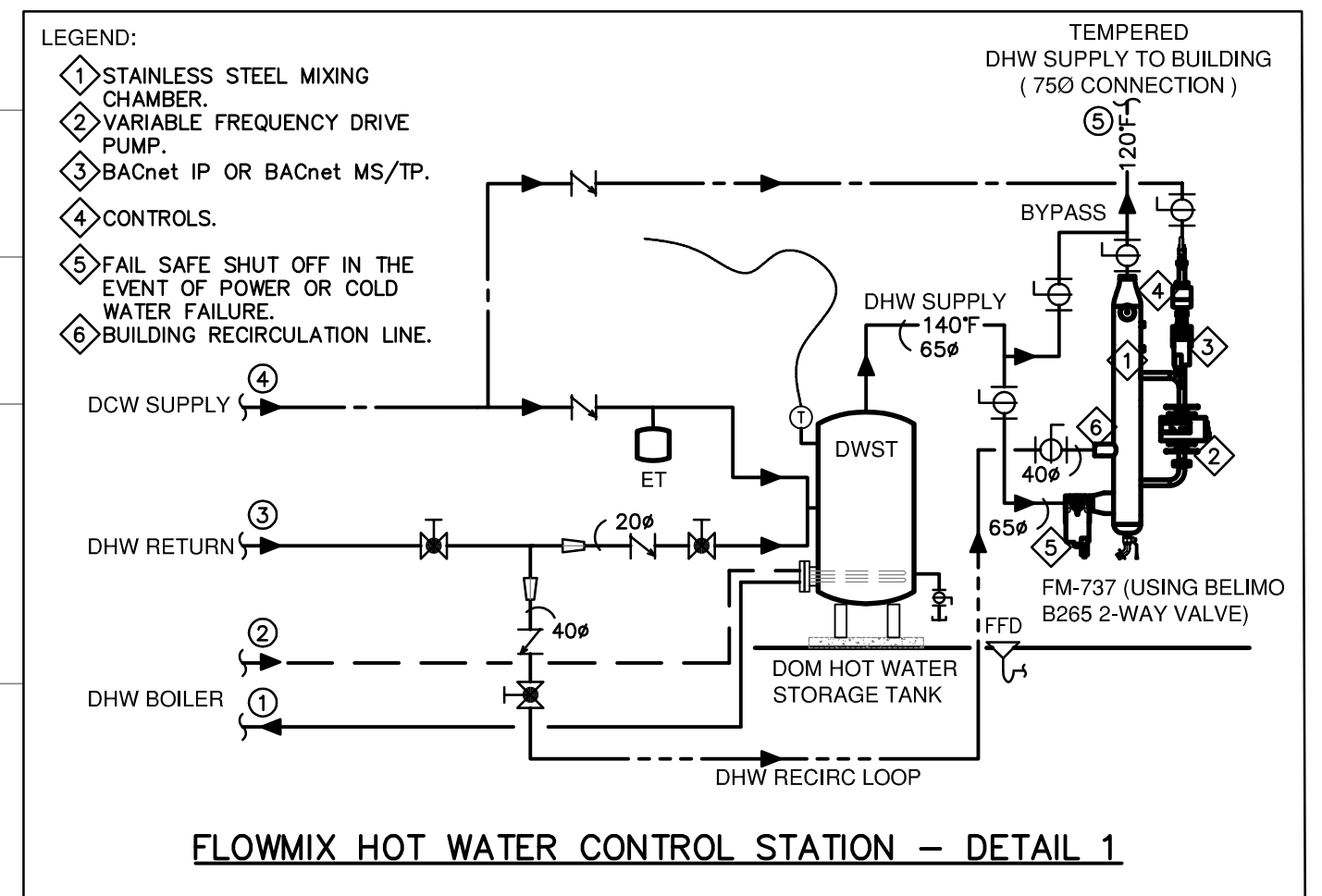
NOTE:
ALL H/C AND COLD WATER PIPE RISERS EXPANSION JOINTS (EJ) MUST BE PRE-COMPRESSED ACCORDINGLY PRIOR TO SHIPPING FROM MANUFACTURER'S FACILITY.



WATER EXPANSION TANK CALCULATION ET-1
TOTAL WATER HEATER VOLUME (GAL) = 550 GAL
WATER EXPANSION FACTOR = 0.0150 (AMTRON TABLE)
CALCULATED EXPANDED WATER (GAL) = 550 X 0.0150 = 8.25
DESIGN PRESSURE FACTOR = 1.8 (AMTRON TABLE)
THERM-X-TROL VOLUME REQUIRED (GAL) = 8.25 X 1.8 = 14.9 GAL
SELECT THERM-X-TROL MODEL: ST-62V-C

WATER EXPANSION TANK CALCULATION ET-2
TOTAL WATER HEATER VOLUME (GAL) = 900 GAL
WATER EXPANSION FACTOR = 0.0150 (AMTRON TABLE)
CALCULATED EXPANDED WATER (GAL) = 900 X 0.0150 = 13.5
DESIGN PRESSURE FACTOR = 1.8 (AMTRON TABLE)
THERM-X-TROL VOLUME REQUIRED (GAL) = 13.5 X 1.8 = 24.3 GAL
SELECT THERM-X-TROL MODEL: ST-62V-C

WATER EXPANSION TANK CALCULATION ET-3
TOTAL WATER HEATER VOLUME (GAL) = 900 GAL
WATER EXPANSION FACTOR = 0.0150 (AMTRON TABLE)
CALCULATED EXPANDED WATER (GAL) = 900 X 0.0150 = 13.5
DESIGN PRESSURE FACTOR = 1.8 (AMTRON TABLE)
THERM-X-TROL VOLUME REQUIRED (GAL) = 13.5 X 1.8 = 24.3 GAL
SELECT THERM-X-TROL MODEL: ST-62V-C



CW FEED BEFORE BOOSTER PUMPS. FOR CONTINUATION REFER TO SCHEMATIC ON M3-05

FROM DOMESTIC WATER BOOSTER PUMPS. FOR CONTINUATION REFER TO SCHEMATIC ON M3-05

MCW
MCW Consultants Ltd.
207 Queen's Quay West, Suite 615, Toronto, ON, M5J 1A7
E-Mail: mcw_tor@mcw.com www.mcw.com
Tel: 416-598-0260 Fax: 416-598-0394
Toronto Vancouver Winnipeg Moncton Ottawa Halifax
Dauphin Kelowna Trail Saint John



| No. | Issuance | Date | No. | Issuance | Date |
|-----|--|------------|-----|----------|------|
| 1 | ISSUED FOR BUILDING PERMIT | 2013.08.10 | | | |
| 2 | ISSUED FOR ME TENDER | 2014.03.03 | | | |
| 3 | ISSUED FOR POST TENDER ADDENDUM No. 001 | 2014.05.23 | | | |
| 4 | ISSUED FOR POST TENDER ADDENDUM No. 002/01 | 2014.07.24 | | | |
| 5 | ISSUED FOR PER CITY COMMENTS | 2014.07.30 | | | |
| 6 | ISSUED FOR ABOVE GRADE CONSTRUCTION | 2015.08.14 | | | |
| 7 | ISSUED FOR S.I. M003 | 2016.07.20 | | | |
| 8 | ISSUED FOR S.I. M009 | 2017.01.24 | | | |
| 9 | ISSUED FOR S.I. M001 | 2017.03.17 | | | |
| 10 | ISSUED FOR S.I. M006 | 2017.04.17 | | | |

WALLMAN ARCHITECTS
30 Duncan Street, Suite 202
Toronto, Ontario M5V 2C3
Tel: 416 340 1870
Fax: 416 340 1871
info@wallmanarchitects.com

TEN YORK
RISING ABOVE IT ALL
10 YORK STREET
TORONTO, ONTARIO
TRIDEL
4800 DUFFERIN STREET, TORONTO, ONTARIO, M3H 5S9
1.416.967.3344 1.416.967.3368
DOMESTIC HOT WATER HEATING RISER DIAGRAM # 1

15-14 project number
March 15, 2015 date
N.T.S. scale
drawing title
M3-04A drawing number

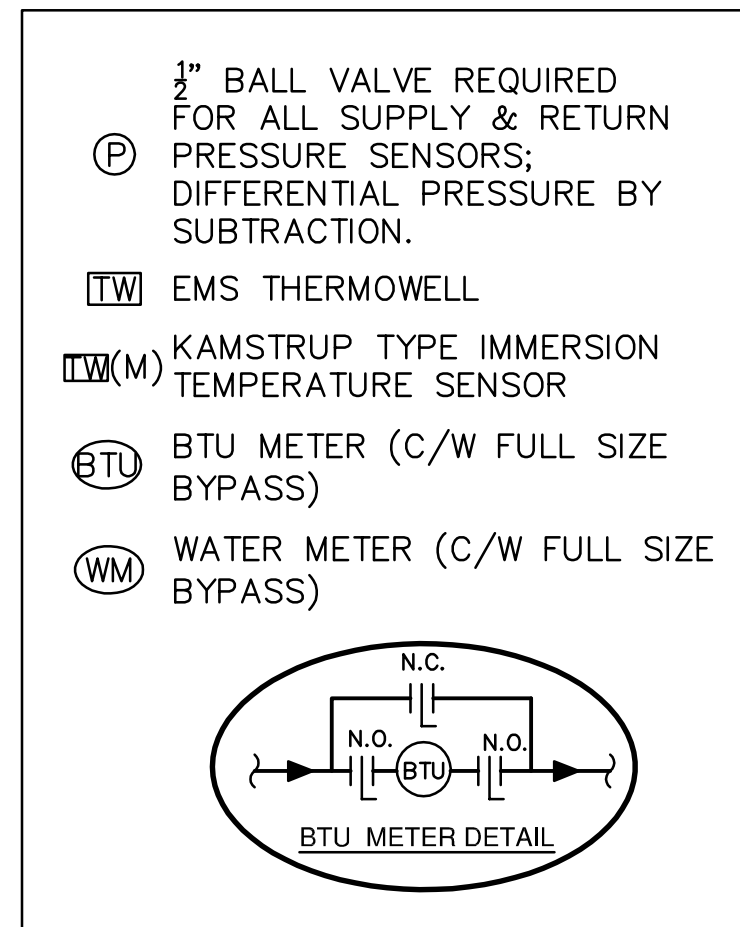
ISSUANCE

GENERAL INFORMATION

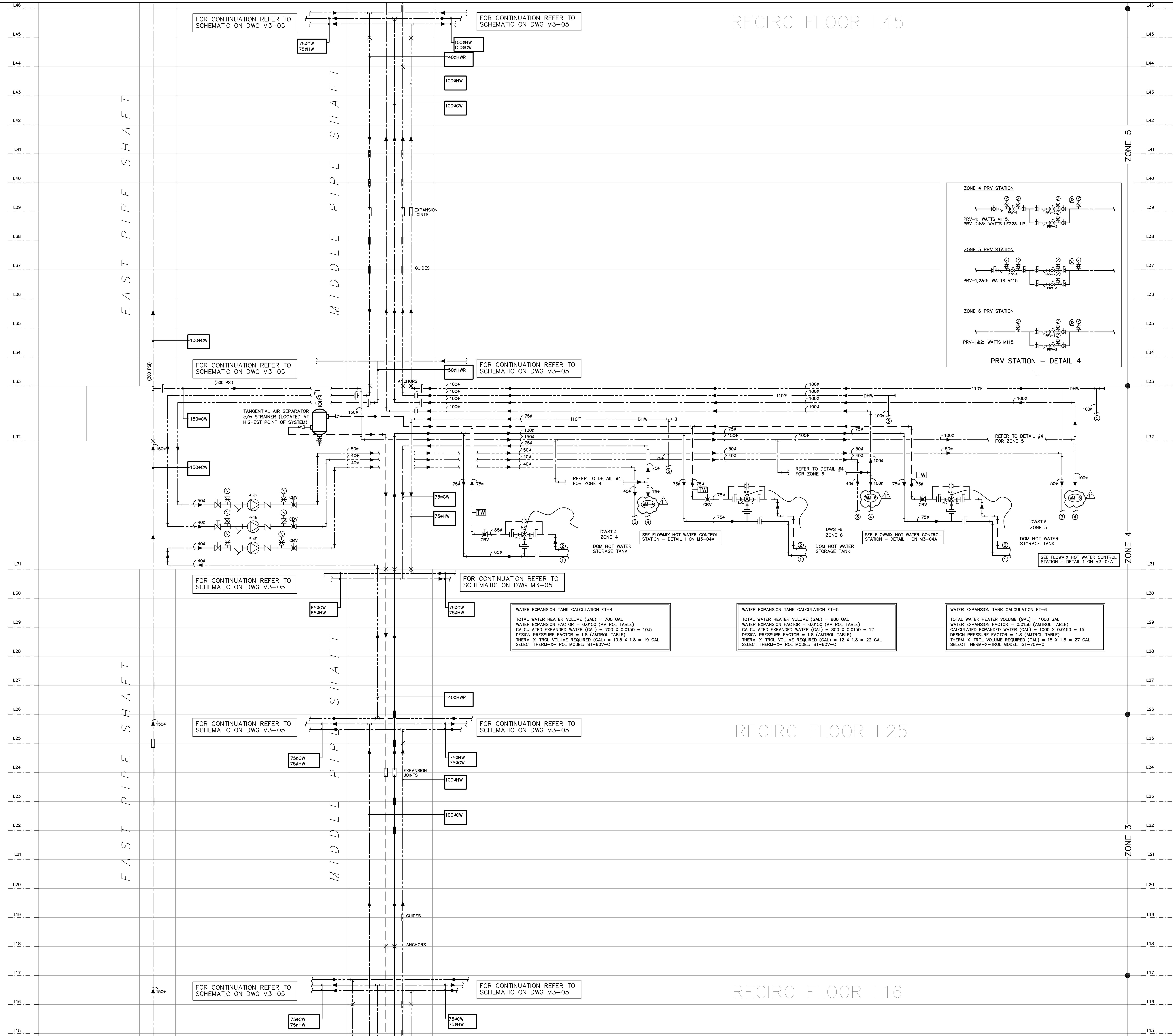
RECIRC FLOOR L45

RECIRC FLOOR L25

RECIRC FLOOR L16



NOTE:
ALL H/C AND COLD WATER PIPE RISERS EXPANSION JOINTS (E₂) MUST BE PRE-COMPRESSED ACCORDINGLY PRIOR TO SHIPPING FROM MANUFACTURER'S FACILITY.



MCW Consultants Ltd.
207 Queen's Quay West, Suite 615, Toronto, ON, M5J 1A7
E-Mail: mcw_tor@mcw.com www.mcw.com
Tel: 416-598-0260 Fax: 416-598-0304
Toronto Vancouver Winnipeg Moncton Ottawa Halifax
Dauphin Kelowna Trail Saint John



| No. | Issuance | Date | No. | Issuance | Date |
|-----|---|------------|-----|----------|------|
| 1 | ISSUED FOR BUILDING PERMIT | 2013.08.10 | | | |
| 2 | ISSUED FOR RFP TENDER | 2014.01.09 | | | |
| 3 | ISSUED FOR POST TENDER ADDENDUM No. 001 | 2014.05.23 | | | |
| 4 | ISSUED FOR POST TENDER ADDENDUM No. 002/001 | 2014.07.04 | | | |
| 5 | ISSUED FOR PER CITY COMMENTS | 2014.07.30 | | | |
| 6 | ISSUED FOR ABOVE GRADE CONSTRUCTION | 2015.08.14 | | | |
| 7 | ISSUED FOR S.I. M003 | 2017.02.20 | | | |
| 8 | ISSUED FOR S.I. M009 | 2017.01.24 | | | |
| 9 | ISSUED FOR S.I. M001 | 2017.02.17 | | | |
| 10 | ISSUED FOR S.I. M006 | 2017.04.17 | | | |

WALLMAN ARCHITECTS
30 Duncan Street, Suite 202
Toronto, Ontario M5V 2C3
T 416 340 1870
F 416 340 1871
Info@wallmanarchitects.com

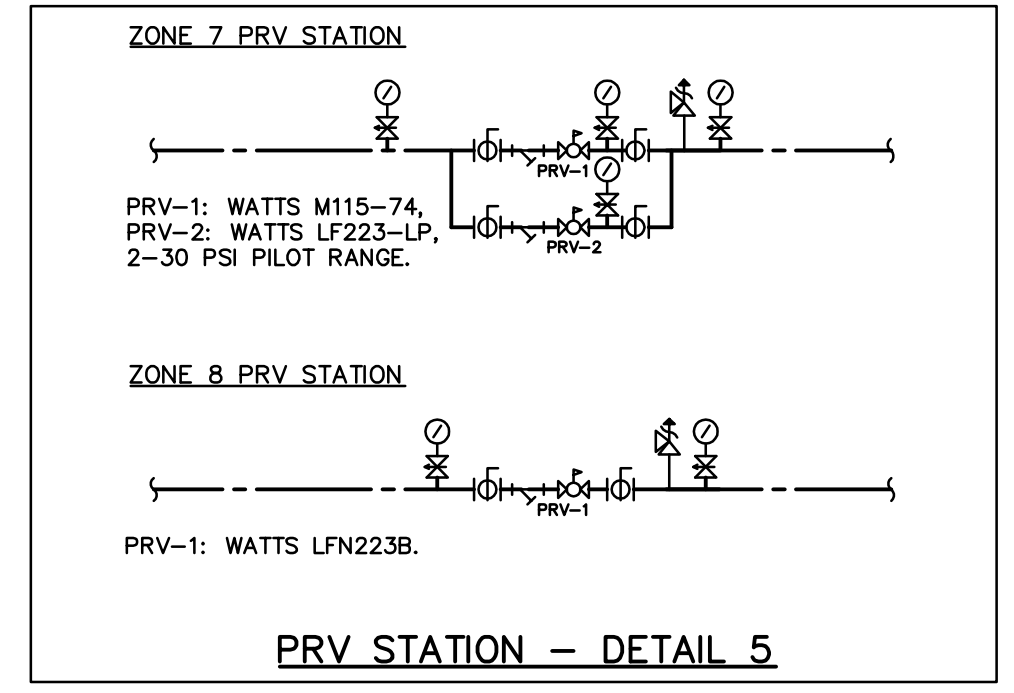
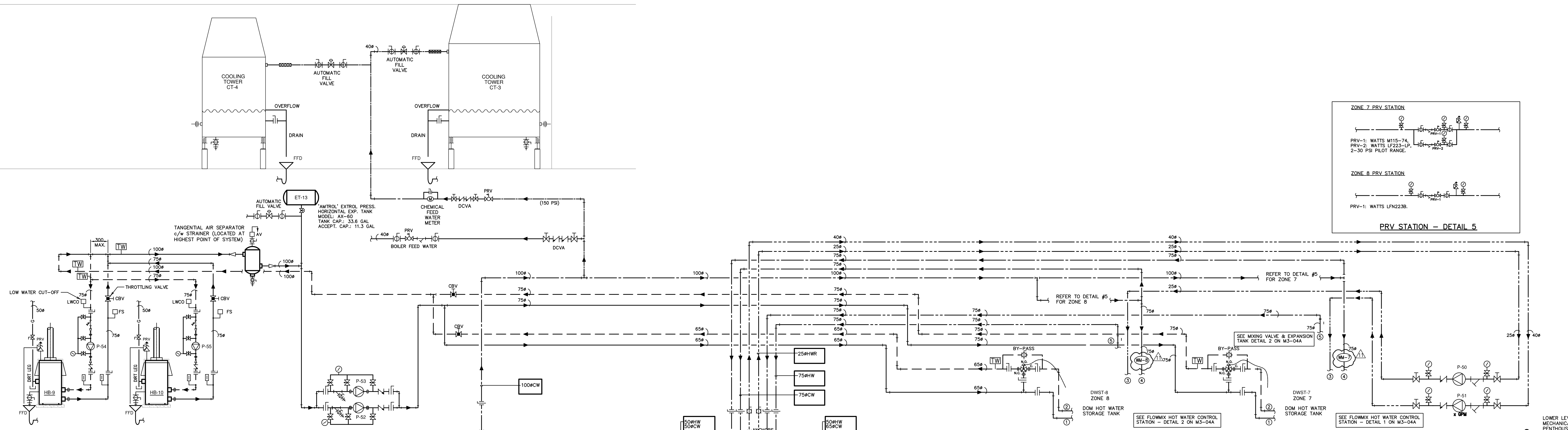
TENYORK
RISING ABOVE IT ALL
10 YORK STREET
TORONTO, ONTARIO
TRIDEL
4800 DUFFERIN STREET, TORONTO, ONTARIO, M3H 5S9
1.416.967.3344 F.416.967.3586

DOMESTIC HOT WATER HEATING RISER DIAGRAM # 2

15-14
March 15, 2015
N.T.S.
M3-04B

ISSUANCE

GENERAL INFORMATION



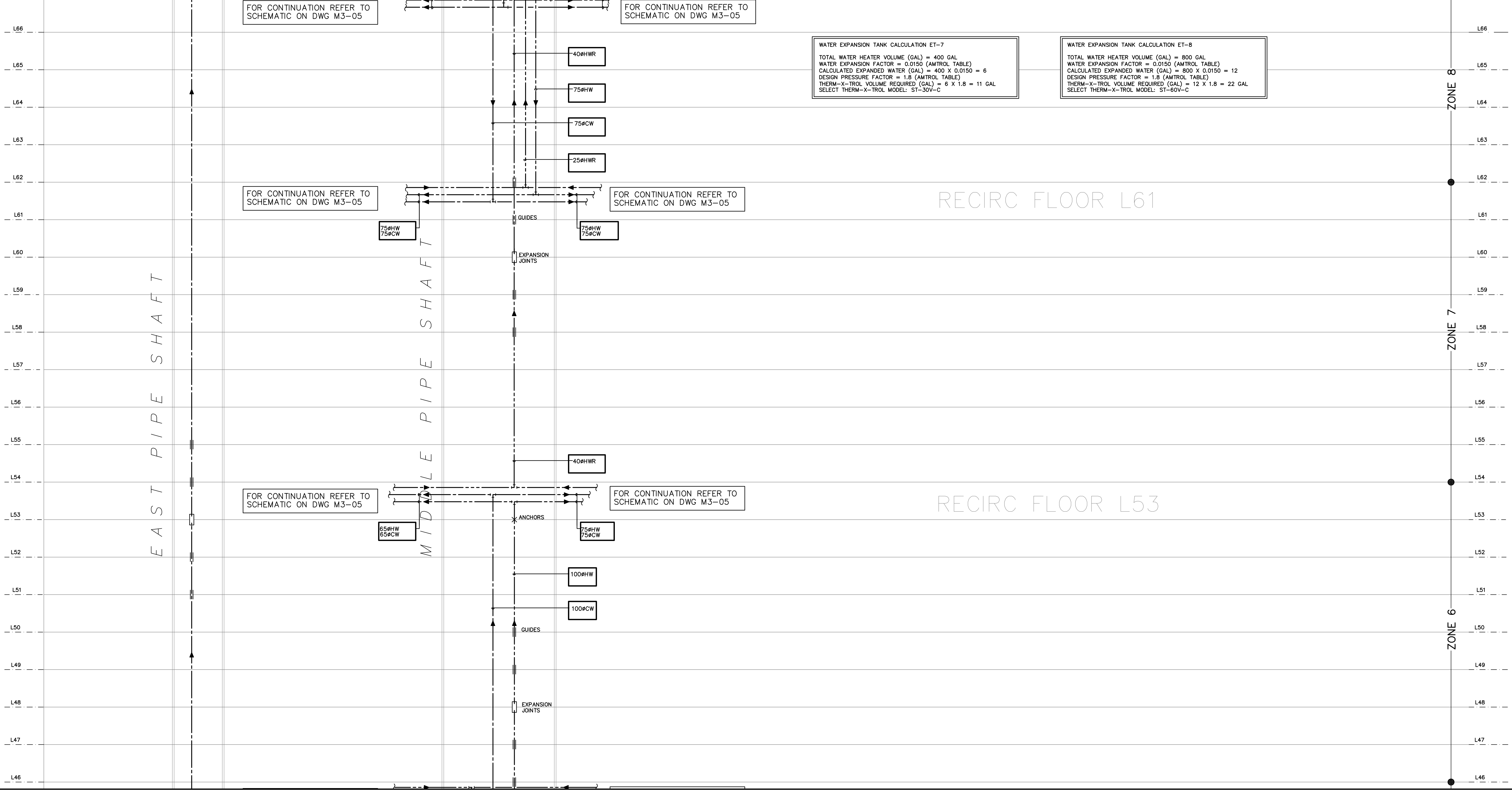
NOTE:
 ALL H/C AND COLD WATER PIPE RISERS EXPANSION JOINTS (EJ'S) MUST BE PRE-COMPRESSED ACCORDINGLY PRIOR TO SHIPPING FROM MANUFACTURER'S FACILITY.

1/2" BALL VALVE REQUIRED FOR ALL SUPPLY & RETURN PRESSURE SENSORS; DIFFERENTIAL PRESSURE BY SUBTRACTION.

EMTS THERMOWELL
 KAMSTRUP TYPE IMMERSION TEMPERATURE SENSOR
 BTU METER (C/W FULL SIZE BYPASS)
 WATER METER (C/W FULL SIZE BYPASS)

WATER EXPANSION TANK CALCULATION ET-7
 TOTAL WATER HEATER VOLUME (GAL) = 400 GAL
 WATER EXPANSION FACTOR = 0.0150 (AMTROL TABLE)
 CALCULATED EXPANDED WATER (GAL) = 400 X 0.0150 = 6
 DESIGN PRESSURE FACTOR = 1.8 (AMTROL TABLE)
 THERM-X-TROL VOLUME REQUIRED (GAL) = 6 X 1.8 = 11 GAL
 SELECT THERM-X-TROL MODEL: ST-30V-C

WATER EXPANSION TANK CALCULATION ET-8
 TOTAL WATER HEATER VOLUME (GAL) = 800 GAL
 WATER EXPANSION FACTOR = 0.0150 (AMTROL TABLE)
 CALCULATED EXPANDED WATER (GAL) = 800 X 0.0150 = 12
 DESIGN PRESSURE FACTOR = 1.8 (AMTROL TABLE)
 THERM-X-TROL VOLUME REQUIRED (GAL) = 12 X 1.8 = 22 GAL
 SELECT THERM-X-TROL MODEL: ST-30V-C



MCW
MCW Consultants Ltd.
 207 Queen's Quay West, Suite 615, Toronto, ON, M5J 1A7
 E-Mail: mcw_tor@mcw.com www.mcw.com
 Tel: 416-598-0260 Fax: 416-598-0264
 Toronto Vancouver Winnipeg Moncton Ottawa Halifax
 Dauphin Kelowna Trail Saint John



| No. | Issuance | Date | No. | Issuance | Date |
|-----|--|------------|-----|----------|------|
| 1 | ISSUED FOR BUILDING PERMIT | 2013.08.10 | | | |
| 2 | ISSUED FOR ME TENDER | 2014.03.03 | | | |
| 3 | ISSUED FOR POST TENDER ADDENDUM No. 001 | 2014.05.23 | | | |
| 4 | ISSUED FOR POST TENDER ADDENDUM No. 002/01 | 2014.07.02 | | | |
| 5 | ISSUED FOR PER CITY COMMENTS | 2014.07.30 | | | |
| 6 | ISSUED FOR ABOVE GRADE CONSTRUCTION | 2015.08.14 | | | |
| 7 | ISSUED FOR S.I. M09 | 2016.04.06 | | | |
| 8 | ISSUED FOR S.I. M03 | 2016.07.20 | | | |
| 9 | ISSUED FOR S.I. M09 | 2017.01.24 | | | |
| 10 | ISSUED FOR S.I. M03 | 2017.03.17 | | | |
| 11 | ISSUED FOR S.I. M09 | 2017.04.17 | | | |

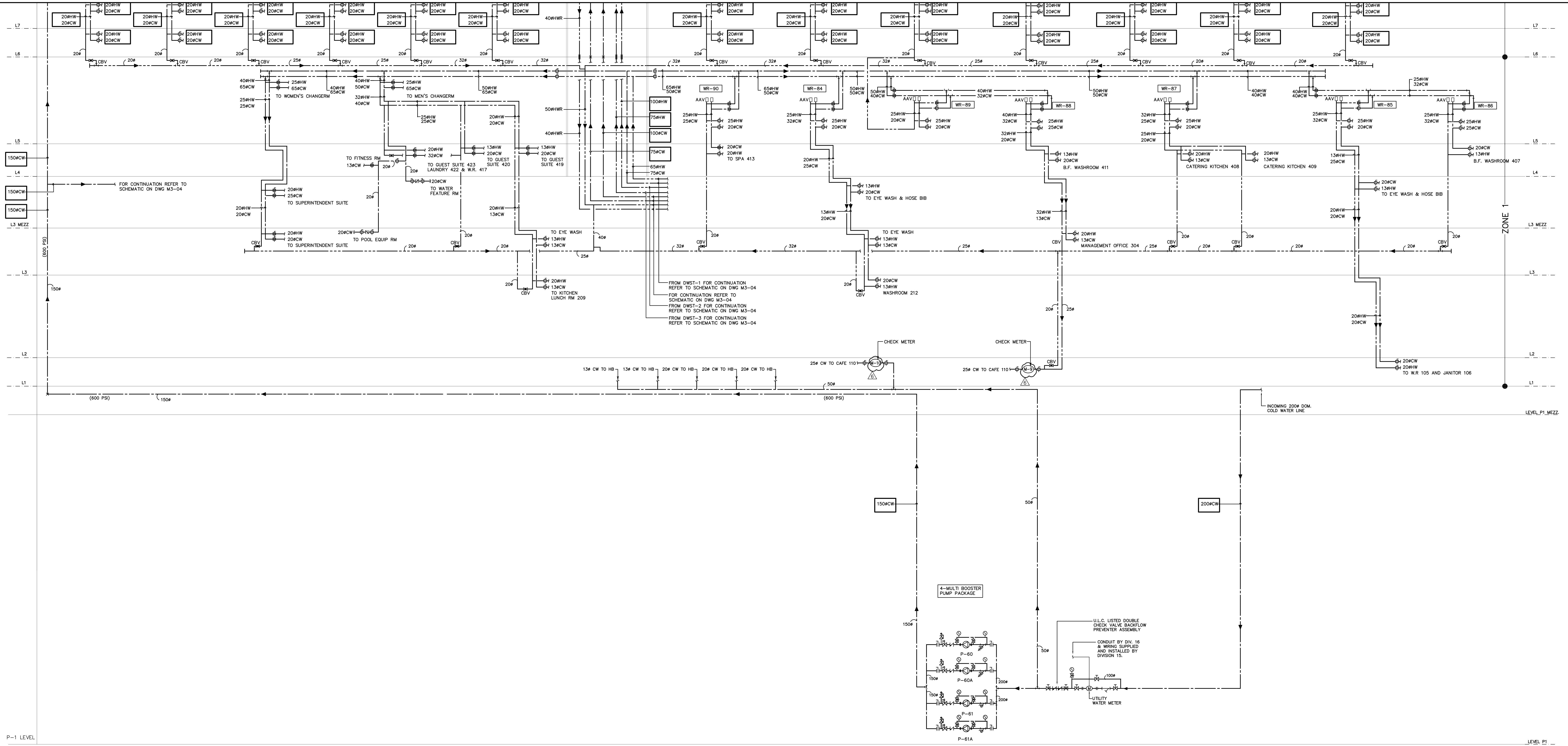
TENYORK
 RISING ABOVE IT ALL
 10 YORK STREET
 TORONTO, ONTARIO

TRIDEL

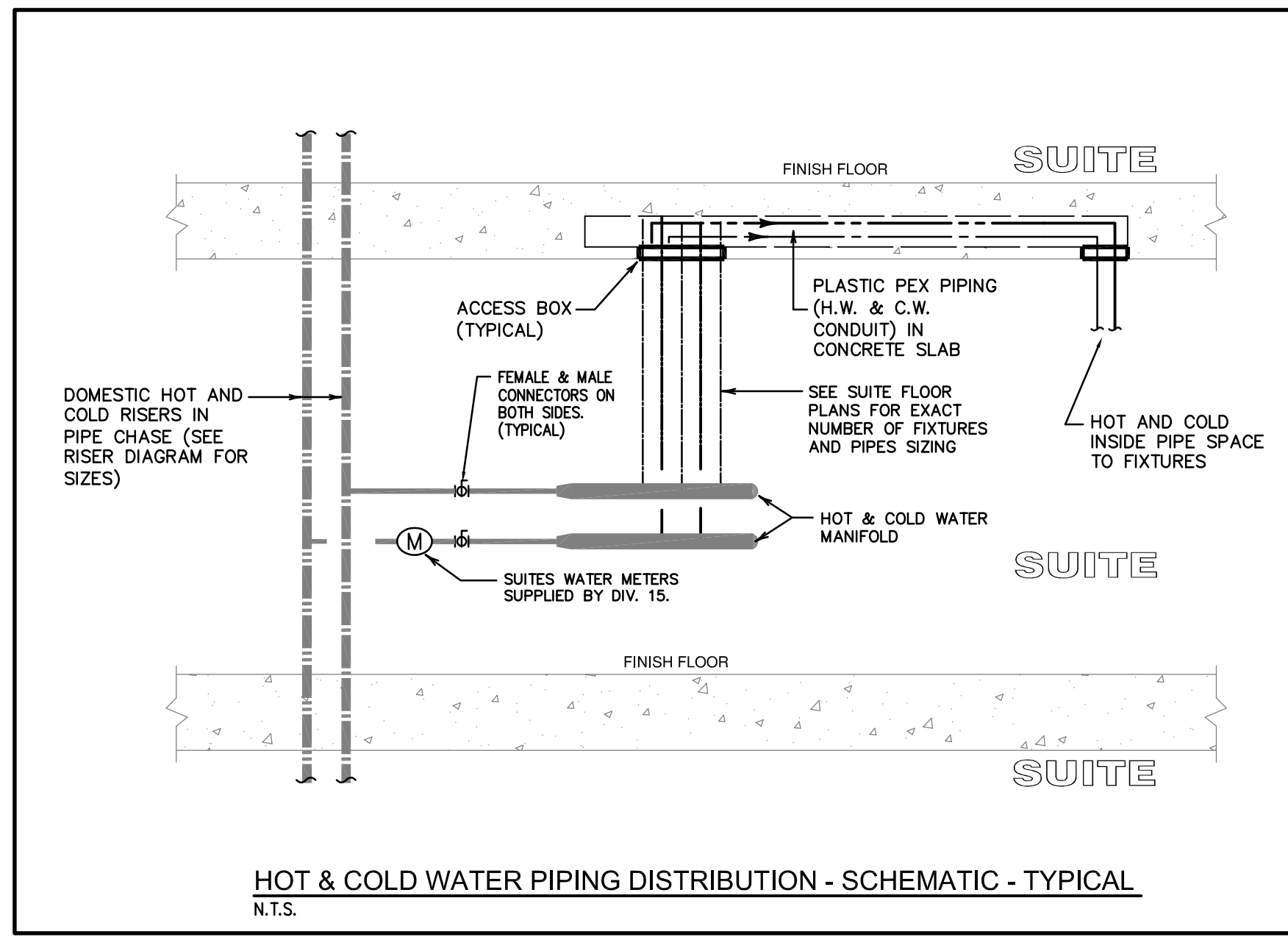
4800 DUFFERIN STREET, TORONTO, ONTARIO, M3H 5S9
 1.416.967.3344 1.416.967.3366

WALLMANARCHITECTS
 30 Duncan Street, Suite 202
 Toronto, Ontario M5V 2C3
 t 416 340 1870
 f 416 340 1871
 info@wallmanarchitects.com

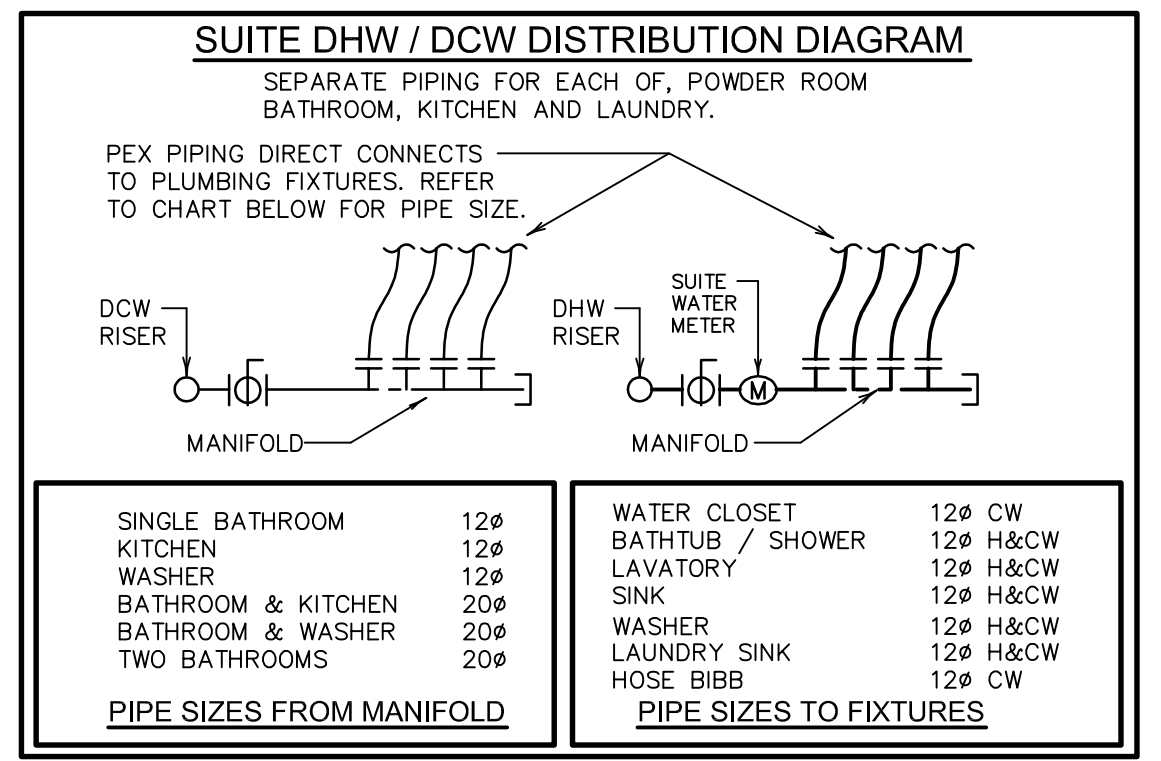
project number: 13-14
 date: March 15, 2013
 scale: N.T.S.
 drawing no: M3-04C



P-1 LEVEL LEVEL P1



- GENERAL NOTES:**
- ALL PIPE ANCHORS, EXPANSION JOINTS AND PIPE GUIDES TO BE INSTALLED IN COMPLIANCE WITH THE ONTARIO BUILDING CODE AND THE REQUIREMENTS OF THE LOCAL MUNICIPALITY.
 - THE DESIGN CRITERIA OF SIZE AND CAPACITY OF PIPES ARE IN ACCORDANCE WITH THE FOLLOWING PARAMETERS:
 - COLD WATER : 1.5 M/SEC (5 F/SEC)
 - HOT WATER : 1.2 M/SEC (4 F/SEC)
 - H.W. REGRIC : 0.9 M/SEC (3 F/SEC)
- NUMBERED NOTES:**
- AT THE BASE OF EACH DOMESTIC HOT WATER RISER PRIOR TO CONNECTION TO INDIVIDUAL PRESSURE ZONE RECIRCULATION HEADER PROVIDE A 1 1/2" ORSWOLD AUTOMATIC FLOW CONTROL VALVE "FLOWX" MODEL 400 G/W STAINLESS STEEL STRAINER AND BALL TYPE ISOLATION VALVE.



MCW
MCW Consultants Ltd.
207 Queen's Quay West, Suite 615, Toronto, ON, M5J 1A7
E-Mail: mcw_tor@mcw.com www.mcw.com
Tel: 416-598-2620 Fax: 416-598-5204
Toronto Vancouver Winnipeg Moncton Ottawa Halifax
Dauphin Kelowna Trail Saint John



| No. | Issuance | Date | No. | Issuance | Date |
|-----|---|------------|-----|----------|------|
| 1 | ISSUED FOR BUILDING PERMIT | 2013.06.10 | | | |
| 2 | ISSUED FOR ME TRACKER | 2013.09.03 | | | |
| 3 | ISSUED FOR POST TENDER ADDENDUM No. 001 | 2014.05.23 | | | |
| 4 | ISSUED FOR MEASIVE CRANE CONSTRUCTION | 2015.08.12 | | | |
| 5 | ISSUED FOR S.I. M303 | 2016.07.20 | | | |
| 6 | ISSUED FOR S.I. M306 | 2017.04.27 | | | |

TENYORK
RISING ABOVE IT ALL
10 YORK STREET
TORONTO, ONTARIO

TRIDEL
4800 DUFFERIN STREET, TORONTO, ONTARIO, M3H 5S9
1416.987.3344 1416.987.5588

WALLMANARCHITECTS
30 Duncan Street, Suite 202
Toronto, Ontario M5V 2C3
t 416 340 1870
f 416 340 1871
info@wallmanarchitects.com

COLD WATER & HOT WATER RISER DIAGRAM # 4

15-14
March 15, 2013
N.T.S.
R.A.

project number: M3-05D
date: 03/15/2013
scale: N.T.S.
drawing no: 03/15/2013
drawn by: [Name]
checked by: [Name]

